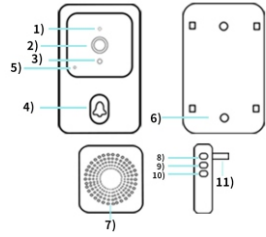


尺寸: 50x85mm

智能可视门铃

使用前请仔细阅读，并妥善保管以备后续参考

一、外观介绍:



门铃:

- 1) 咪头 2) 镜头 3) 光敏 4) 门铃键
- 5) 指示灯 6) 复位孔

叮咚:

- 7) 喇叭 8) 配对键 9) 音量大小
- 10) 音乐切换 11) USB充电口

二、APP下载方式:

Android手机可在自带应用市场或应用宝搜索【涂鸦智能】或【智能生活】进行下载;IOS手机在APP Store中搜索【涂鸦智能】或【智能生活】下载;
注:该款门铃的功能仅在APP4.3.0及以上版本上支持,为用户更佳体验,请更新或下载最新版本。



【涂鸦智能】



【智能生活】

三、APP注册:

- 1.如第一次下载使用,请点击“注册”;如有账号,则直接点击“登录”。
- 2.点击“注册”,阅读“隐私政策”,点击“同意”。输入合法有效的手机号码或电子邮件地址,并单击“继续”。然后输入验证码登录APP。(“立即体验”登入不能正常添加门铃设备,请注册后登入。)
- 3.APP权限弹窗提示,如弹出“消息推送、访问地理位置、连接周边设备”等权限,请设置为“允许”。

四、添加设备:

- 1.打开手机定位权限功能,连接家里的2.4G WiFi。
- 2.按门铃键开机,工作指示灯闪烁,设备进入配网模式。
- 3.打开APP,进入“首页”,点击页面右上角“+”,APP将自动扫描发现设备,点击“添加”。



- 1.叮咚机(图左)接通电源;
- 2.长按叮咚机配对键3秒(如图),指示灯闪烁;按一下门铃键(图右),叮咚机响铃,即匹配成功。

六、手机信息推送

进入手机-设置-通知与状态栏-应用通知管理,打开APP通知权限,开启允许通知、悬浮、锁屏、声音提醒等通知功能。
(备注:因各手机型号不同,操作界面、选项等存在差异,请自主选择)

七、功能介绍:

- 1.信息推送:当访客按门铃时,手机会收到APP推送信息,点击推送弹窗进入视频通话。
- 2.视频通话:按住麦克风键对屏,打开喇叭监听。
- 3.门铃共享:进入APP实时界面,点击右上角设置-共享设备-添加共享-输入已注册的账号
- 4.低电量提醒:当电池电量比较低时,APP会推送低电量提醒,请及时充电。

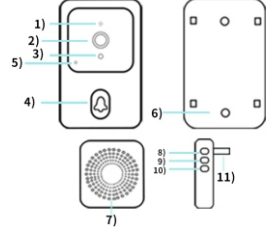
八、注意事项

- 设备为低功耗门铃,无人按门铃时,设备进入休眠线路,属正常现象。
- 因手机型号不同,推送设置不同,请根据需求设置。
- 仅支持2.4G WiFi,暂不支持5G或带有特殊符号的WiFi。
- 由于金属易干扰WiFi信号,请尽量避免将设备安装在金属壁上。
- 充电时请勿使用门铃。

Smart Video Doorbell

Please read it carefully before use and keep it for future reference

I. Appearance introduction:



Doorbell:

- 1) Mic 2) Lens 3) Light sensitive
- 4) Doorbell key 5) Indicator light 6) Reset

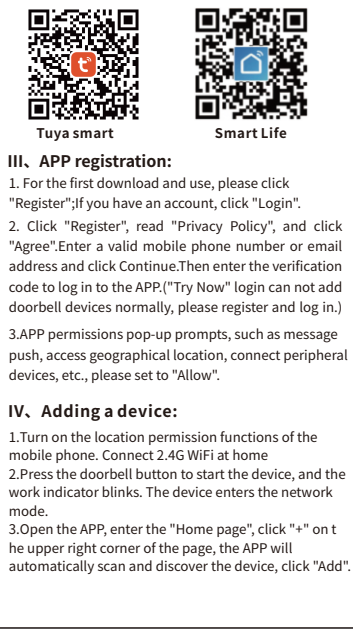
Ding dong:

- 7) Speaker 8) Pairing key 9) Volume size
- 10) Music toggle 11) USB Charging Port

II. Download mode of APP:

For Android phones, it can be downloaded from its own app market or App Treasure Search 【TUYA Smart】 or 【Smart Life】 APP. For IOS phones, search for "TUYA Smart" or Smart Life in the APP Store to download.

Note: The function of this doorbell is only supported on APP 4.3.0 and above, for a better user experience, please update or download the latest version.

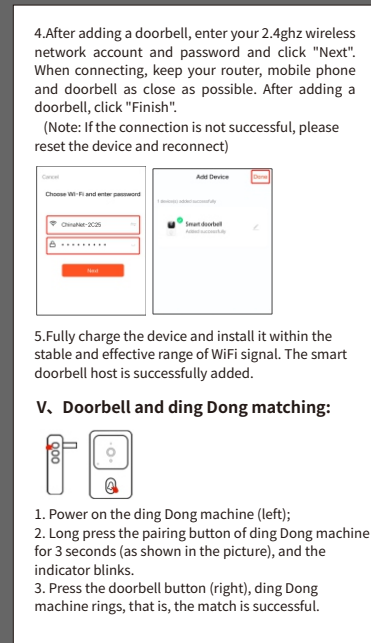
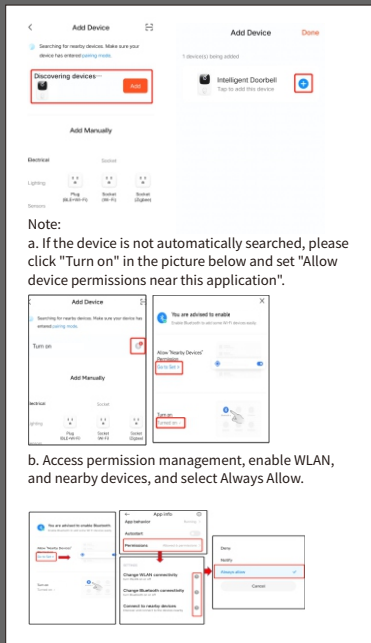


III. APP registration:

1. For the first download and use, please click "Register"; if you have an account, click "Login".
2. Click "Register", read "Privacy Policy", and click "Agree". Enter a valid mobile phone number or email address and click Continue. Then enter the verification code to log in to the APP. ("Try Now" login can not add doorbell devices normally, please register and log in.)
3. APP permissions pop-up prompts, such as message push, access geographical location, connect peripheral devices, etc., please set to "Allow".

IV. Adding a device:

1. Turn on the location permission functions of the mobile phone. Connect 2.4G WiFi at home
2. Press the doorbell button to start the device, and the work indicator blinks. The device enters the network mode.
3. Open the APP, enter the "Home page", click "+" on the upper right corner of the page, the APP will automatically scan and discover the device, click "Add".



VI. Mobile message push

Enter mobile phone-Settings-notification and status bar-Application notification management, open APP notification permission, enable notification, suspension, lock screen, sound reminder and other notification functions.
(Note: Due to different mobile phone models, the operation interface and options are different, please choose independently)

VII. Function introduction:

1. Message push: When visitors ring the doorbell, the mobile phone will receive the APP push message, click the push popup to enter the video call.
2. Video call: Hold down the microphone key to talk to each other, open the speaker to listen.
3. Doorbell sharing: Enter the real-time interface of APP, click Settings - Share device - Add Share - enter the registered account
4. Low battery reminder: When the battery is low, the APP will push low battery reminder, please charge in time.

VIII. Matters needing attention:

1. Message push: When visitors ring the doorbell, the mobile phone will receive the APP push message, click the push popup to enter the video call.
2. Video call: Hold down the microphone key to talk to each other, open the speaker to listen.
3. Doorbell sharing: Enter the real-time interface of APP, click Settings-Share device-Add Share-enter the registered account
4. Low battery reminder: When the battery is low, the APP will push low battery reminder, please charge in time.

FCC Warning:

This equipment has been tested and found to comply with the limits for a Class B digital device, pursuant to part 15 of the FCC Rules. These limits are designed to provide reasonable protection against harmful interference in a residential installation. This equipment generates, uses and can radiate radio frequency energy and, if not installed and used in accordance with the instructions, may cause harmful interference to radio communications. However, there is no guarantee that interference will not occur in a particular installation. If this equipment does cause harmful interference to radio or television reception, which can be determined by turning the equipment off and on, the user is encouraged to try to correct the interference by one or more of the following measures:

- Reorient or relocate the receiving antenna.
- Increase the separation between the equipment and receiver.
- Connect the equipment into an outlet on a circuit different from that to which the receiver is connected.
- Consult the dealer or an experienced radio/TV technician for help.

Caution: Any changes or modifications to this device not explicitly approved by manufacturer could void your authority to operate this equipment.

This device complies with part 15 of the FCC Rules. Operation is subject to the following two conditions:

(1) This device may not cause harmful interference, and (2) this device must accept any interference received, including interference that may cause undesired operation.

This equipment complies with FCC radiation exposure limits set forth for an uncontrolled environment. This equipment should be installed and operated with minimum distance 20cm between the radiator and your body.