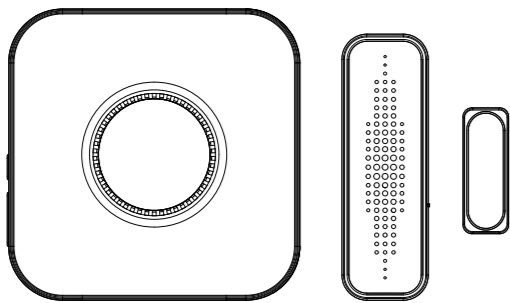


80mm

80mm

Wireless Door Chime User Manual



Please read this user manual before using and installation.

Welcome

Thank you for purchasing our security products!

Our plug-in receiver and wireless door sensor have a maximum range of 600 feet (200 meters). It is suitable for multiple application scenarios, including but not limited to:

- Alerts you when customers open your store doors.
- Alerts you when a thief opens a window or door.
- Alerts you when your kids are out without you looking.
- Alerts you when the company has visitors.

Our plug-in receiver is expandable, allowing you to pair with a variety of transmitters such as contact sensors, motion detectors, and pet putters. One plug-in receiver can be paired with up to 58 different transmitters, and each transmitter can be set to a different ringtone (58 ringtones to choose from).

Our wireless door sensors can be paired with up to 58 receivers. Allowing you to receive signals even in different rooms.

Please note that extended pairing can only be done with Satisure brand products.

Features

- Sensor, wireless, easy to install
- Receiver, plug-in, easy to install
- Radio frequency transmission up to 600 feet
- Separate the sensor to trigger the receiver to ring
- 5-level adjustable volume (0-110dB)

Specifications

LED Indication	Flashing Indicator
Sensor	1*23A 12V alkaline Battery Powered (included)
Receiver	AC100-240V Operation
Sensor Parts Installation Distance	Less than 0.8 inches
Receiver Standby Power	<0.3W
Wireless Frequency	433.92MHZ
Working Range	600ft (in open range)
Working Humidity	Less than 85%
Sensor Operating Temperature	0-55°C

Package Contents

- Door Sensor (Battery Included)
- Plug-in Receiver
- Screwdriver
- Door Sensor Fixed Sticker
- User Manual

How Does It Work?

Basically, a door sensor alarm system has two parts.

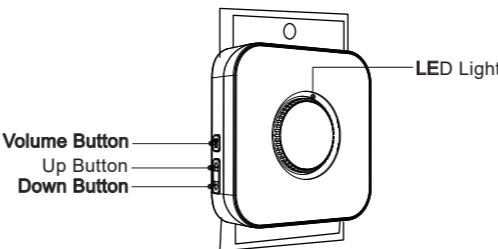
1. The indoor alarm receiver works as an alarm buzzer. It receives a signal from the door sensor and activates an alarm (0-110dB) in response to that signal. It also has a flashing LED indicator so you can find it first even at night. The indoor alarm receiver can be simply plugged into an AC outlet.

2. The door sensor transmits a signal to the receiver by separating the two parts (the installation distance of the two parts does not exceed 0.8 inches), and the blue light flashes when the signal is transmitted. It can be installed on windows or doors etc. The product has a built-in battery, but you need to replace the battery yourself when the battery is dead.

Overview

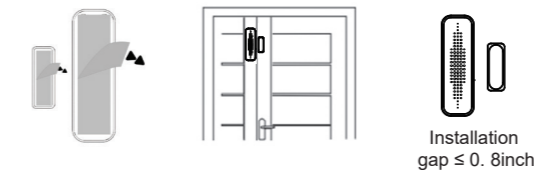
Plug-in Receiver

- The receiver has up to 58 melodies for you to choose from.
- The receiver has 5 volume levels(0-110dB).
- The LED flashes blue when the receiver is triggered.
- The receiver will ring when the door sensors are separated.



Wireless Door Sensor

- The door sensor is installed by double-sided adhesive strip.
- After the door sensor is stuck to the door, press firmly for at least 5 seconds.
- Please note that the installation gap between the two parts should be less than 0.8inches.
- Please remember to replace the battery when it is out of battery.



Getting Started

1.POWERING THE INDOOR CHIME RECEIVER

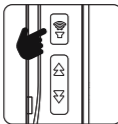
Plug the receiver into the outlet and press the volume button to test whether it can make sound. The receiver will perform better if kept away from other electrical equipment. (eg TV, microwave.)

2.POWERING THE DOOR SENSOR

The door sensor runs on 1*23A 12V alkaline battery (included) and operates wirelessly at a maximum distance from the receiver of 600ft/200m(in open range). Please remember to replace the battery when it is out of battery.

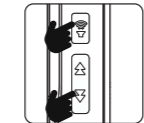
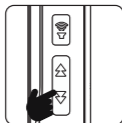
3.SOUND VOLUME CONTROL:

Press the volume control button on the receiver to cycle through 5 volume levels.



4.SETTING RINGTONE:

There are 58 melodies to choose from:

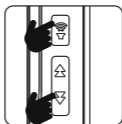


Press at the same time

- (1)Press the Up Button or Down Button to choose your favorite ringtone.
- (2)Short Press the Volume Button and the Down Button together, and you will hearing the receiver make a sound.
- (3)Quickly separate the two parts of the door sensor, when you hear the bell of your choice, it means the setting is successful. The new ringtone will be set for the most recently synced transmitter.

5.PAIRING A TRANSMITTER TO THE RECEIVER

- (1)Please select your favourite ringtone before pairing.
- (2)Short Press the Volume Button and the Down Button together, and you will hearing the receiver make a sound.
- (3)Quickly separate the two parts of the door sensor, when you hear the receiver rings, it means the pairing is successful.



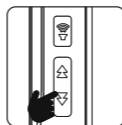
Press at the same time

6.TWO OR MORE TRANSMITTERS PAIRING

If you would like to pair with more door sensors, please repeat the STEP 5.

7.RESET

Press Down Button for 5 seconds to reset receivers to default, when receiver sounds ' Ding Dong' with LED flashing that means the reset was successful. Then you can follow the STEP 5 to pair again.

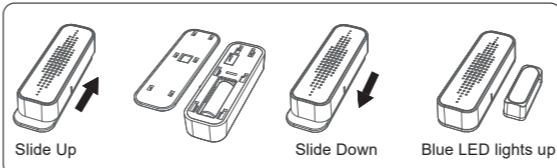


Please note:

- (1)Pairing mode will last for 5 seconds only before timing out. Ensure you activate the transmitter during this time or the process will have to start again.
- (2)Pairing mode will quit automatically after pairing is completed.

How to Replace the Battery?

Referring to the picture, slide the door sensor upward to open the battery cover. After removing the battery and replacing it with a new 23A 12V alkaline battery, install it back according to the internal structure of the battery compartment, and then slide it down to lock the battery compartment to prevent it from falling off due to the vibration of opening and closing the door.



After replacing the battery, put the two parts of the door sensor together and then separate them, the blue LED will light up, which means the replacement is successful.

Tips: Replacing the battery does not require removing the door sensor from the door and can be done directly.

Q&A

Problem	Cause	Solution
Blue indicator on the door sensor does not light up	The battery insulating film has not been peeled off	Peel off the insulating film
	The battery is not properly installed	Take out the battery and install it again.
	The battery power is low	Replace with a new 23A 12V alkaline battery
Receiver does not respond to the transmitter (No sound & light)	The outlet has no power	Make sure the outlet has power
	Unsuccessful pairing	Pair the receiver with the door sensor again, refer to Page 10
Receiver only lights without making any sound	Silent mode is on	Press the Volume Button to make a sound
	The receiver is garbled	Reset the receiver first, refer to Page 11, then pair the receiver with the door sensor again, refer to Page 10
Receiver rings without opening the door/window	The receiver is garbled	Reset the receiver first, refer to Page 11, then pair the receiver with the door sensor again, refer to Page 10

Chimes List

- | | |
|----------------------------------|------------------------------|
| 1 Ding-dong,Ding-dong | 30 Xylophone |
| 2 Ding-dong | 31 Flute Sound Doorbell |
| 3 Ding-dong Chime | 32 Electric Piano |
| 4 DingDongDingDong | 33 Alerting Ringtone |
| 5 DingDingDong | 34 Twilight Sms Tone |
| 6 Alarm Sound Effect | 35 Classical Organ |
| 7 Hello Welcome | 36 Joy To The World |
| 8 Horn Sound | 37 Waltz Of The Flowers |
| 9 Knock Knock Knock | 38 For Alice |
| 10 The Cuckoo | 39 The William Tell Overture |
| 11 The Cuckoo Waltzes | 40 Butterfly Dream |
| 12 Dog | 41 Happy Birthday |
| 13 Bird | 42 Eva's Polka |
| 16 Chicken | 43 Russe Dance |
| 17 Cat | 44 Souvenirs Denfance |
| 18 Let It Snow | 45 Victory |
| 19 Dingdong Merrily On High | 46 Turkey March |
| 20 Jingle Bells | 47 Toreador Song |
| 21 We Wish You A Merry Christmas | 48 Telephone Ring |
| 22 Westminster Chimes 1 | 49 Spanish Girl |
| 23 Westminster Chimes 2 | 50 Arpeggio Sound |
| 24 Big Ben Electronic Doorbell | 51 Overture William Tell |
| 25 Classphone | 52 Drinking Song |
| 26 Di,Di,Di,Di,Di,Di | 53 Romance De Amor |
| 27 Reflection | 54 Music Box Dancer |
| 28 Happy Hour | 55 Fantaisie Impromptu |
| 29 Pan-fried Tea | 56 Red River Valley |
| | 57 Schubert's Nocturne |
| | 58 Memory |

FCC Warning:

This equipment has been tested and found to comply with the limits for a Class B digital device, pursuant to part 15 of the FCC Rules. These limits are designed to provide reasonable protection against harmful interference in a residential installation. This equipment generates, uses and can radiate radio frequency energy and, if not installed and used in accordance with the instructions, may cause harmful interference to radio communications. However, there is no guarantee that interference will not occur in a particular installation. If this equipment does cause harmful interference to radio or television reception, which can be determined by turning the equipment off and on, the user is encouraged to try to correct the interference by one or more of the following measures:

- Reorient or relocate the receiving antenna.
- Increase the separation between the equipment and receiver.
- Connect the equipment into an outlet on a circuit different from that to which the receiver is connected.
- Consult the dealer or an experienced radio/TV technician for help.

Caution: Any changes or modifications to this device not explicitly approved by manufacturer could void your authority to operate this equipment.

This device complies with part 15 of the FCC Rules. Operation is subject to the following two conditions:

(1) This device may not cause harmful interference, and (2) this device must accept any interference received, including interference that may cause undesired operation.

This equipment complies with FCC radiation exposure limits set forth for an uncontrolled environment. This equipment should be installed and operated with minimum distance 0cm between the radiator and your body.