

THE BATTERY

Popit Sense is powered by a 3 Volt CR2032 Lithium-metal coin cell battery (included). The battery is user-replaceable. Use only CR2032 or DL2032 type accepted batteries from well-known brands.

The battery lasts around 3-12 months with normal use. Battery life depends on the amount of pills Popit Sense will need to detect per day. Longest operating time is achieved with one pill per day or a less frequent dosage.

REPLACING THE BATTERY

Slide the battery case open and remove the old battery. Slide the new battery in place, making sure that the text side of the battery is facing up. Close the battery case by sliding the cover back into place, making sure to close the case properly.

Do not charge, disassemble or short-circuit the battery

Batteries should be disposed of properly according to local regulations.

When discarding batteries, insulate the + and - faces with insulating or non-conductive tape. If improperly disposed of, lithium batteries may short-circuit, causing them to become hot, burst or ignite.

Do not use a damaged battery. Keep battery away from open flame. If battery is broken do not touch it with bare hands and use safety goggles.

Keep pets and children away from battery. If battery is swallowed, call the emergency number immediately for further instructions

Store new and unused batteries in a dry place and keep temperature between -22 and -140F (-30 and 60C)

If the battery is taken aboard an airplane follow safety instructions by the flight operator

IMPORTANT INFORMATION

Device size: L45mm x W30mm xH13mm
Case material: Plastic

Popit Sense is an electronic device and has to be handled with care.

Do not use Popit Sense if it seems to malfunction or it seems to be damaged.

Use the device where the ambient temperature is between 0°C and 40°C and the humidity level is between 10% and 93%.

Your Popit Sense is not watertight and should always be kept dry. If necessary, you can clean it with a damp, lukewarm cloth (DO NOT use detergent as this may impair the device).

In order to reach up to 12 months' battery lifetime with a high-quality coin cell battery, all the sensors cannot be active all the time. Because of this reason it is important to follow the usage depicted in this user guide so best accuracy can be achieved.

Due to the very high number of pill blister types available and numerous ways to take pills, automatic detection can at times provide incorrect results. We strive to minimize these occurrences with constant development.

DISPOSAL

WEEE: The symbol on the product and its packaging signifies that this product has to be disposed separately from ordinary household waste at its end of life

Please kindly be aware that this is your responsibility to dispose of electronic equipment at recycling centers so as to help conserve natural resources.

Each country in the European Union should have its collection centers for electrical and electronic equipment recycling.

For information about your recycling drop off point, please contact your local electrical and electronic equipment waste management authority or the retailer where you bought the product.

WARRANTY

Popit Sense comes with a one (1) year limited Warranty. It means that for any faulty products we will offer exchanges up until one year from the original purchase date. The client has to contact us to have an RMA (Return Merchandising Authorization). This Warranty does not apply to:

- (a) cosmetic damage, including but not limited to scratches and dents;
- (b) damage caused by accident, misuse, unreasonable use, immersion in water, neglect, abuse, battery leakage, improper service, or other external causes;
- (c) damage caused by operating the product outside the permitted or intended uses described by Popit Ltd. in the accompanying leaflet;
- (d) a product or part that has been modified
- (e) defects caused by normal wear and tear or otherwise due to the normal aging of the product.

LEGAL INFORMATION

Regulatory Notes: United States of America Federal Communications Commission (FCC).

This device complies with part 15 of the FCC Rules. Operation is subject to the following two conditions:

- 1) this device may not cause harmful interference, and
- 2) this device must accept any interference received, including interference that may cause undesired operation.

Any change or modification not expressly approved by Popit Ltd. may void the user's authority to operate the equipment.

Regulatory Notes: Canada IC COMPLIANCE STATEMENT:

This device contains licence-exempt transmitter(s)/receiver(s) that comply with Innovation, Science and Economic Development Canada's licence-exempt RSS(s). Operation is subject to the following two conditions:

- 1) this device may not cause interference.
- 2) this device must accept any interference, including interference that may cause undesired operation of the device.

L'émetteur/récepteur exempt de licence contenu dans le présent appareil est conforme aux CNR d'Innovation, Sciences et Développement économique Canada applicables aux appareils radio exempts de licence. L'exploitation est autorisée aux deux conditions suivantes:

- 1) l'appareil ne doit pas produire de brouillage;
- 2) l'utilisateur du dispositif doit être prêt à accepter tout brouillage radioélectrique reçu même si ce brouillage est susceptible de compromettre le fonctionnement du dispositif.

Regulatory notes: European Union: CE directive. STATEMENT: Hereby, Popit Ltd. declares that Popit Sense is in compliance with the essential requirements and other relevant provisions of Directive 2014/53/EU.

HELLO

and thank you for choosing Popit!

Popit Sense and the Popit App help you remember to take your pills on time and support you with your medical treatment.

Popit Sense and the Popit App are only intended as a supplement to any memory system that you currently use to remind yourself to take your medication.

You must take full responsibility in administering your medication at the appropriate time and to follow the instructions from your Healthcare Professional.

REACH OUT

if you have any issues with your Popit product, our friendly staff are ready to help.

www.popit.io
reachout@popit.io

Popit Ltd.
Metsänneidonkuja 6
02130 Espoo
FINLAND

Please contact your Healthcare Professional if you need medical assistance or a prescription.



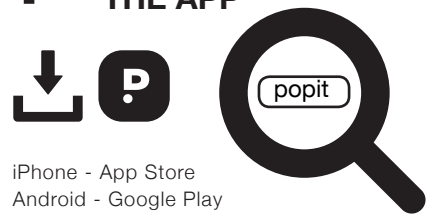
USER MANUAL



RoHS

1

INSTALL THE APP

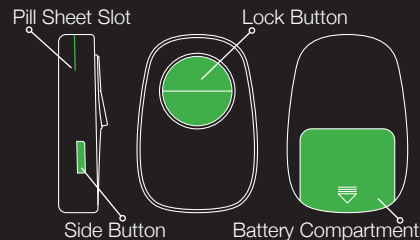


iPhone - App Store
Android - Google Play

Open the Popit App and allow notifications, then sit back and enjoy the guided tour.

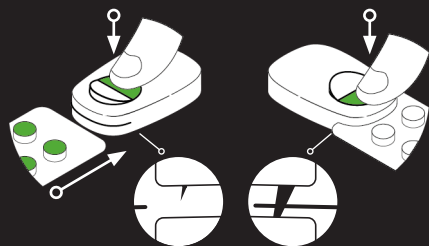
2

GET TO KNOW YOUR POPIT SENSE



3

CONNECT YOUR PILLS



A
PRESS & HOLD
the back of the lock button & fully insert the pill sheet with the pills facing up.

B
Firmly press the other side of the lock button to completely secure the locking mechanism.

CHANGING THE PILL SHEET
Press and hold the lock button as in step A and remove the pill sheet. Repeat steps A and B to insert the new one.

Replace the pill sheet immediately after you finish the previous one to seamlessly continue pill tracking.

4

TAKING YOUR PILLS

Popit Sense has two methods for recording when you take your pills:

AUTOMATIC DETECTION

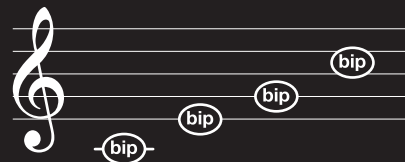
Three sensors work in a sequence to detect pill extraction as accurately as possible.

MANUAL DETECTION

Popit Sense is augmented with manual detection as a backup to automatic detection.

CONFIRMATION SOUND

With both methods of detection you will hear four ascending beeps to confirm that your dose has been recorded successfully.



AUTOMATIC



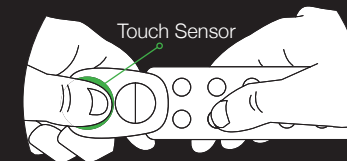
MOVEMENT

Popit Sense is constantly detecting movement, if movement is detected the device starts waiting for touch.



TOUCH

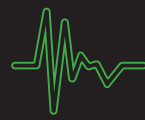
For touch to register please follow these steps when taking a pill:



Hold the device & pill sheet so that one hand is holding the device and the other the pill sheet.



When touch is detected you will hear a double beep. Then firmly pop a pill within a few seconds.



SOUND

Lastly, Popit Sense listens for the sound of pill extraction. If this is successful the side button will flash in addition to the confirmation sound.



Didn't receive this? No worries! You can use manual detection.

MANUAL



Press the side button on Popit Sense with a short press to manually record your dose. If taking multiple pills you need only press it once after taking all of the pills.

You can also manually record your dose on the Popit App.