

Appendix A

Detailed System Check Results

1. System Performance Check
System Performance Check 6500 MHz Head
System Performance Check 10 GHz Source

Measurement Report for D6.5GHz, FRONT, Custom Band, CW, Channel 6500000 (6500.000 MHz)

D6.5GHzV2-SN 1102

Communication System: Custom Band; Frequency: 6500.000

Medium: HSL. Medium parameters used: $f= 6500.000$ MHz; $\sigma= 6.01$ S/m; $\epsilon_r = 33.5$

DASY6 Configuration:

- Probe: EX3DV4 - SN7838; ConvF(5.07, 4.99, 5.15); Calibrated: 2023-09-11
- Sensor-Surface: 1.4 mm
- Electronics: DAE4 Sn896; Calibrated: 2024-03-18
- Phantom: SAM 12; Serial: 2031
- Measurement Software: cDASY6 Module SAR V16.2.4.2448

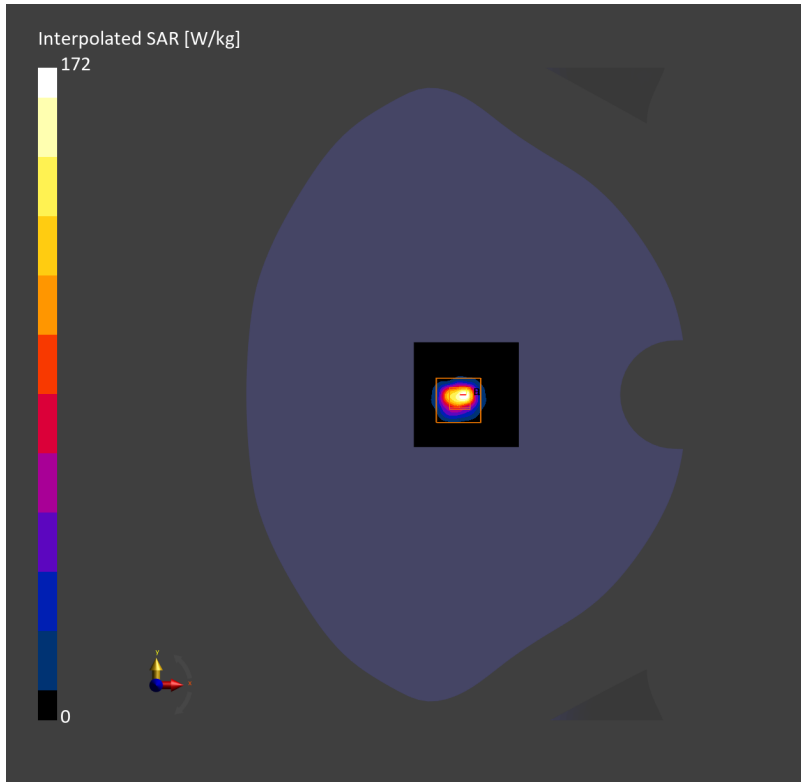
Area Scan (51.0 mm x 51.0 mm): Measurement Grid: 8.5 mm x 8.5 mm

SAR (1g) = 20.4 W/kg; SAR (10g) = 4.54 W/kg;

Zoom Scan (22.0 mm x 22.0 mm x 22.0 mm): Measurement Grid: 3.4 mm x 3.4 mm x 1.4 mm

Power Drift = -0.07 dB

SAR (1g) = 28.7 W/kg; SAR (10g) = 5.28 W/kg;



System Performance Check 6500 MHz Head**D6.5GHzV2-SN 1102**

Communication System: D6.5GHz; Frequency: 6500.000

Medium: HSL. Medium parameters used: $f= 6500.000$ MHz; $\sigma= 6.08$ S/m; $\epsilon_r = 34.0$

DASY8 Configuration:

- Probe: EX3DV4 - SN7821; ConvF(5.08, 5.15, 5.33); Calibrated: 2023-07-17
- Sensor-Surface: 1.4 mm
- Electronics: DAE4ip Sn1830; Calibrated: 2023-09-12
- Phantom: Twin-SAM V8.0 (30deg probe tilt); Serial: 2256
- Measurement Software: cDASY8 V16.2.4.2524

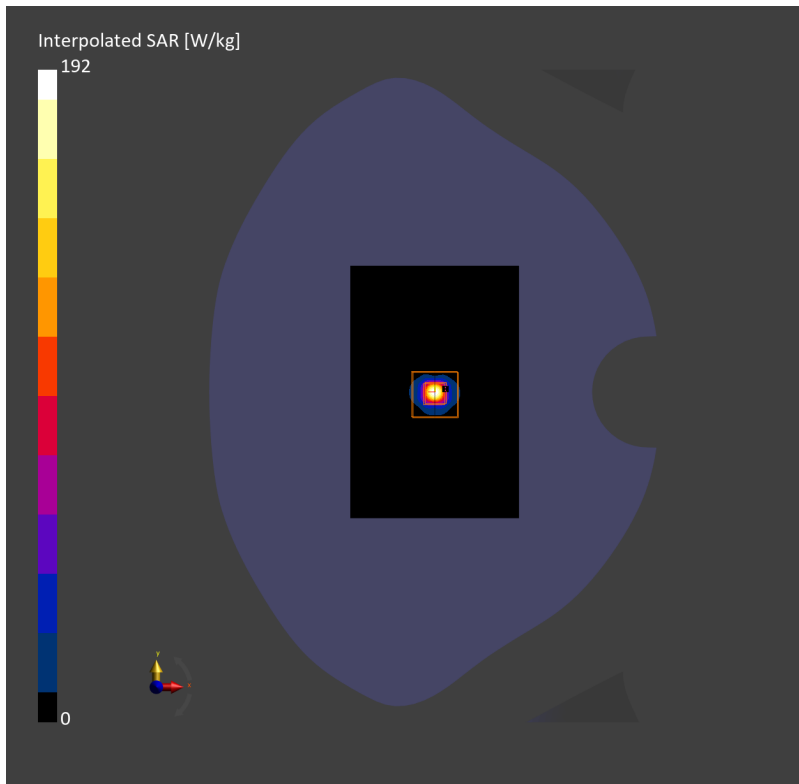
Area Scan (80.0 mm x 120.0 mm): Measurement Grid: 10.0 mm x 10.0 mm

SAR (1g) = 25.9 W/kg; SAR (10g) = 4.95 W/kg;

Zoom Scan (24.0 mm x 24.0 mm x 22.0 mm): Measurement Grid: 4.0 mm x 4.0 mm x 2.0 mm

Power Drift = 0.04 dB

SAR (1g) = 30.1 W/kg; SAR (10g) = 5.64 W/kg;



Measurement Report for 10G Source, FRONT, Validation band, CW, Channel 10000 (10000.0 MHz)

Device Under Test Properties

Model, Manufacturer	Dimensions [mm]	IMEI	DUT Type
10G Source,	100.0 x 100.0 x 100.0	2004	Source

Exposure Conditions

Phantom Section	Position, Test Distance [mm]	Band	Group, UID	Frequency [MHz], Channel Number	Conversion Factor
5G	FRONT, 10.00	Validation band	CW, 0--	10000.0, 10000	1.0

Hardware Setup

Phantom	Medium	Probe, Calibration Date	DAE, Calibration Date
mmWave - xxxx	Air -	EUmmWV4 - SN9533_F1-55GHz, 2023-08-18	DAE4 Sn896, 2024-03-18

Scans Setup

Scan Type	5G Scan
Grid Extents [mm]	120.0 x 120.0
Grid Steps [lambda]	0.25 x 0.25
Sensor Surface [mm]	10.0
MAIA	N/A

Measurement Results

Scan Type	5G Scan
Date	2024-06-01
Avg. Area [cm ²]	4.00
psPDn+ [W/m ²]	189
psPDtot+ [W/m ²]	191
psPDmod+ [W/m ²]	196
E _{max} [V/m]	311
Power Drift [dB]	0.08

