

DRAFT:

User Manual

2.0.



Introducing Car Thing.	4	3. Attach magnet	15
Front view	4	4. Attach Car Thing	16
Top view	4	5. Secure the cable	17
Common actions	5	Remove parts	18
Items in the box.	6	Remove CD mount	18
Additional items needed.	6	Remove dash mount	18
Overview of set-up.	7	Remove vent mount	18
1. Connect to power.	8	Detach magnet	18
2. Connect phone.	9	Detach cable clips	18
1. Initiate set-up flow	9	Preset buttons.	20
Use QR code	9	Play a preset	20
Manually	9	View presets	20
2. Install software	9	Set a preset	20
3. Connect to Car Thing	9	Availability	20
4. Software update	10	Settings.	21
5. Connect to sound system	10	In-motion blocking	21
Bluetooth	10	Turn on/off microphone	21
AUX	10	Add phone connection	21
Apple Car Play and Android Auto	10	Forget phone connection	22
6. Onboarding	10	Switch voice	22
Mount in the car.	11	Adjust brightness	22
1. Choose mount	11	Help	22
2a. Place CD mount	12	About	22
2b. Place dash mount	13	Restart	23
2c. Place vent mount	14	Turn on/off device	23
		Factory reset.	23
		Onboarding	23

Updates.	24	Cleaning.	30
Network connection	24	Recycling and disposal.	30
First use	24	Technical specifications.	31
Smart caching.	25	Model number	31
What is available?	25	Dimensions	31
What's not available?	25	Display	31
Phone functionality.	25	Weight	31
Calls	25	Wireless technology	32
Notifications	25	Protocol	32
Apps	25	Ports & Connectors	32
New user.	26	Electrical rating	32
New car.	26	Power	32
Sound control.	27	Environmental conditions (for Car Thing and adapter)	32
Sound quality	27	Supported phones	32
Headphones	27	Important Product and Safety Information.	33
Volume	27		
Troubleshooting.	28		
Car Thing won't power on	28		
The message Power problem is shown on screen	28		
Can't connect my phone to the device	28		
Can't connect phone to the sound system with Bluetooth	28		
No sound from speakers	28		
Sound is coming from phone instead of speakers	28		
Voice requests aren't working	29		

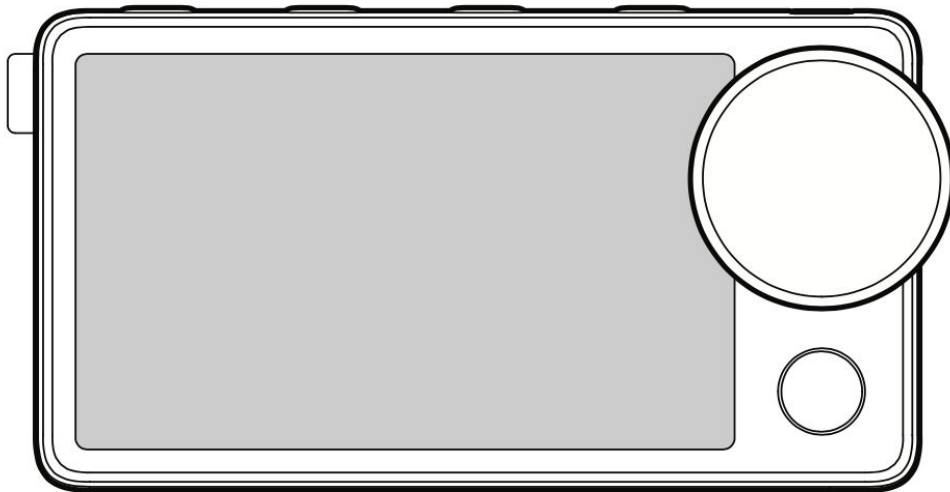
Introducing Car Thing.

Car Thing is your new companion on the road. Whether you're on a road trip, commuting to work, or dropping the kids off at school, it provides you with the right music to set the mood.

The device integrates voice, tactile, and screen commands to enable interaction adapted to your needs.

To talk to Car Thing you first need to get it listening by saying "Hey Spotify" or "Okay Spotify". You can then tell the device what you want it to do. You can also use the buttons and screen to interact with the device.

When Car Thing is listening, a green circle is displayed on a black screen. If music is currently playing, the volume will be reduced, and if a podcast is currently playing it will be paused and rewinded when you resume listening.



Front view

1. **Touch screen** - See and control what's playing. Swipe to browse through content. Touch to navigate.
2. **Dial** - Turn to explore music and podcasts. Press to play or pause. Press and hold to access options for currently playing content.
3. **Back button** - Press to return to the previous screen. Eventually you will come back to the now playing view. From the now playing view the button opens the library.

Top view

4. **Settings button** - Press to open or close the settings menu. Press and hold to reset the device. For more information go to [Settings](#).
5. **Preset buttons** - Press to play saved music and podcasts instantly. Press and hold to save to a preset. For more information go to [Presets](#).
6. **Microphones** - Ask Car Thing to play music and podcasts. Make sure the microphones are not covered.
7. **Power outlet** - Connect Car Thing to power in the car.

Common actions

Play your favorite song

Say “Hey Spotify, play {song name}”

Play my playlist

Say “Hey Spotify, play {playlist name}”

or

Press the back button to go the library and find the playlist

Pause/Resume currently playing content

Say “Hey Spotify, pause/resume”

or

Press the centre of the dial

Skip to next song/Go back to previous song

Say “Hey Spotify, skip/go back”

or

Turn the dial to the right to go forward and to the left to go back.

Find out what song playing

Say “Hey Spotify, what’s playing?”

Save currently playing playlist to a preset button

Say “Save to preset {name}”

or

Press and hold the preset button you want to save to.

Turn off mic

Say “Hey Spotify, mute mic.”

or

Press the settings button and press the dial when you’re on the option Microphone (the first option in the list).

Items in the box.

These are the items included with your brand new Car Thing:

Car Thing - Plays music, or podcasts, through your car's speakers.

CD mount - Attaches the device to the CD tray.

Dash mount - Attaches the device to a free surface on the dashboard.

Vent mount - Attaches the device to the car's vents.

Magnet - Attaches the device to the mounts and allows for easy angling. Works on all the mounts included.

USB cable - Connects the device to the power adapter.

Power adapter - Plugs into the car's 12 V power outlet.

Cable clips (2) - Keeps the cables out of the way.

Cleaning cloth - Cleans the surface where you will place the dash mount and cable clips.

Setup Guide - Describes how to set up Car Thing.

Product Guide - Gives an overview of how to use Car Thing.

Product Safety Information - Provides important safety information about your device.

Additional items needed.

These items are also needed to get started using Car Thing:

- A car with a stereo you can connect your phone to via Bluetooth or AUX.
- A phone with the Spotify App installed.

Note: For more information about supported phones go to [Supported phones](#).

Note: You need to have a Spotify Premium account to use Car Thing.

Overview of set-up.

These are steps you need to perform to get started.

Warning! Don't set up Car Thing while driving. Distracted driving can result in serious injury, death, or property damage. Safe operation of your vehicle is completely your responsibility.

1. **Connect to power.** Plug the provided power adapter into a 12 V outlet and plug the USB cable into the power adapter. Then connect the USB cable to Car Thing via the port on the back.
2. **Connect phone.** Scan the QR code in the Setup Guide with the phone camera to get guided through this. There's two steps to this process:
 - **Connect your phone to Car Thing.** If you're unable to scan the code you can connect manually in the Spotify App.
 - **Connect phone to the sound system.** Connect your phone to the car's sound system via Bluetooth or an AUX port. Apple Car Play or Android Auto is also possible to use if your car has this.
3. **Mount in the car.** Secure one of the mounts (CD mount, dash mount and vent mount) to your car's dashboard. Attach Car Thing to the mount with the magnet. Use the cable clips to keep the cables out of the way.

1. Connect to power.

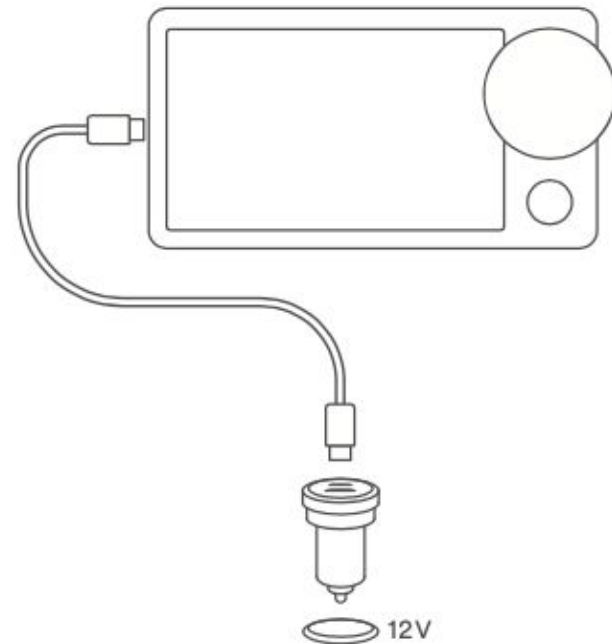
Use the USB cable and power adapter to connect the device to a 12V power outlet. This is usually the cigarette lighter.

Important! Only use power adapters and cables included, or approved for use, with Car Thing. Please read the [Product and Safety Information](#) for important safety information about your device.

1. Locate a 12V power outlet in the car.
2. Plug the power adapter into the power outlet.
3. Plug the USB cable into the power adapter.
4. Plug the smaller end of the cable (USB type C connector) into the outlet on the back of the device.
5. Turn on your car's ignition.

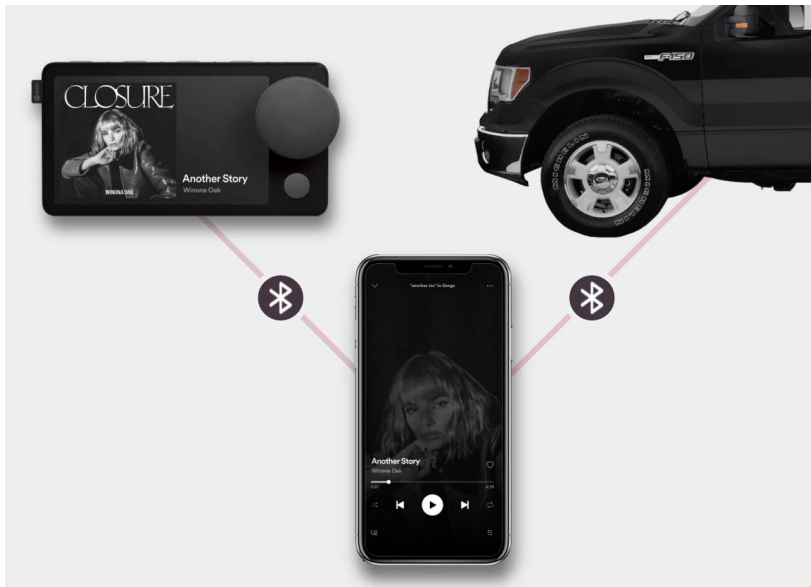
Important! In some cars the power outlet will provide power even when the ignition is turned off. If this is the case in your car you need to make sure to unplug the device if you leave the car for more than 72 hours, otherwise there's a risk of draining the car battery.

Refer to your car's manual for more information.



2. Connect phone.

To get set up you need to connect your phone to Car Thing. This will provide Car Thing with a network connection and link your Spotify account to the device. You also need to connect your phone to the car's sound system, with Bluetooth or AUX, to be able to play music through the speakers.



Ensure the following before you start connecting:

- Car Thing is connected to power.
- Your phone has network connection.
- Your phone has Bluetooth turned on.

1. Initiate set-up flow

Use QR code

Scan the QR code below. Use the camera on your phone to do this. Just hover the camera over the code to scan it.



When you have scanned the code you will be taken to a set-up flow in the Spotify App.

Manually

If you're unable to scan the code you can connect manually in the Spotify App. Open your Spotify App and go to **Settings > Car > Car Thing**.

2. Install software

Press **Add new Car Thing** in the Spotify App to initiate the installation flow.

3. Connect to Car Thing

Go to **Settings - Bluetooth** in your phone and find **Spotify Car Thing** in the menu.

Once you've connected to the phone a confirmation message will appear on Car Thing.

4. Software update

When a phone is connected a software update will be performed on Car Thing to make sure the device is up to date.

Note! The update will take a few minutes to perform. Consider mounting for the device while the update is in progress.

5. Connect to sound system

To be able to play Spotify via your car's sound system you need to connect your phone to the head unit.

The recommended way to connect is with Bluetooth. If your car doesn't support Bluetooth you can use an AUX cable instead. Apple Car Play or Android Auto is also possible to use if your car has this.

Bluetooth

1. Go to the car's Bluetooth settings.
2. Connect to your phone by following the instructions coming from the car's sound system (on the screen or audible).

Need more information? Follow the instructions in your car's driver's manual.

AUX

Connect your phone to the car's sound system via an AUX port (cable for this is not included with Car Thing).

Apple Car Play and Android Auto

Connect your phone to the car via USB and it can coexist with Apple CarPlay and Android Auto.

6. Onboarding

Once you've set up the device a number of onboarding modules that will help you get started using your device will be available.

If you don't want to take part of these modules right now they are always available in the **Settings** menu on Car Thing.

Mount in the car.

Three mounting options are provided for Car Thing: the CD mount, the dash mount, and the vent mount. Instructions on how to mount are provided in the coming chapters.

Warning! Don't set up Car Thing while driving. Distracted driving can result in serious injury, death, or property damage. Safe operation of your vehicle is completely your responsibility.

Make sure that your car is parked in a safe place before you start setting up the mounts. Always follow the instructions provided by Spotify for how to set up the mounts.

1. Choose mount

Consider the following when choosing which mount to use and where to put it:

- The position must be out of the way from important functions in the car (such as gear stick, parking brake, light switches and speedometer).
- Car Thing must be securely fixed in place with the chosen mount.
- Car Thing needs to be close enough for you to see and reach from the driver's seat.
- Car Thing needs to be close enough to hear you speaking when driving.
- The power cable needs to be able to reach Car Thing where it's mounted.

Important! Go to the [Product and Safety information](#) for important safety information when using the mounts.

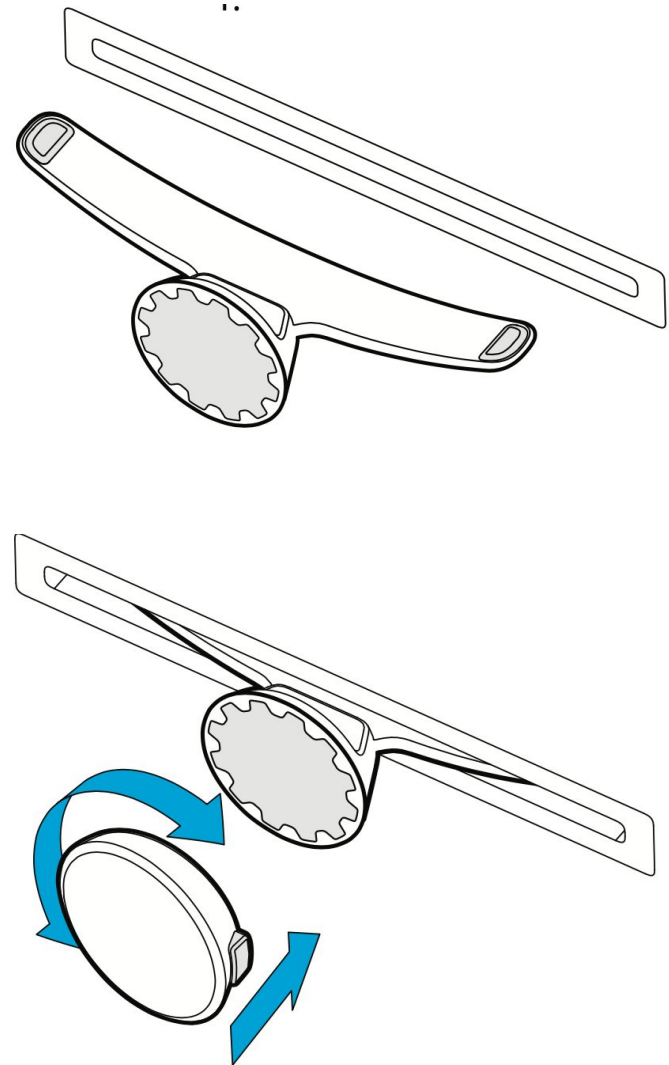
2a. Place CD mount

This mount has two wings that can be flattened to fit into the CD slot.

Important! Make sure the CD slot is empty before inserting the mount.

1. Insert one of the wings into the CD slot (tips should be pointing up).
2. Gently bend the other wing and insert it into the slot.
3. Carefully push the mount into your CD slot until it feels secure. You can move the mount horizontally in the slot to ensure that it doesn't cover important functions on the dashboard.
4. To attach Car Thing you need to first attach the magnet to the mount, see [Attach magnet](#) for instructions.

Important! Go to the [Product and Safety information](#) for important safety information when using the mounts.



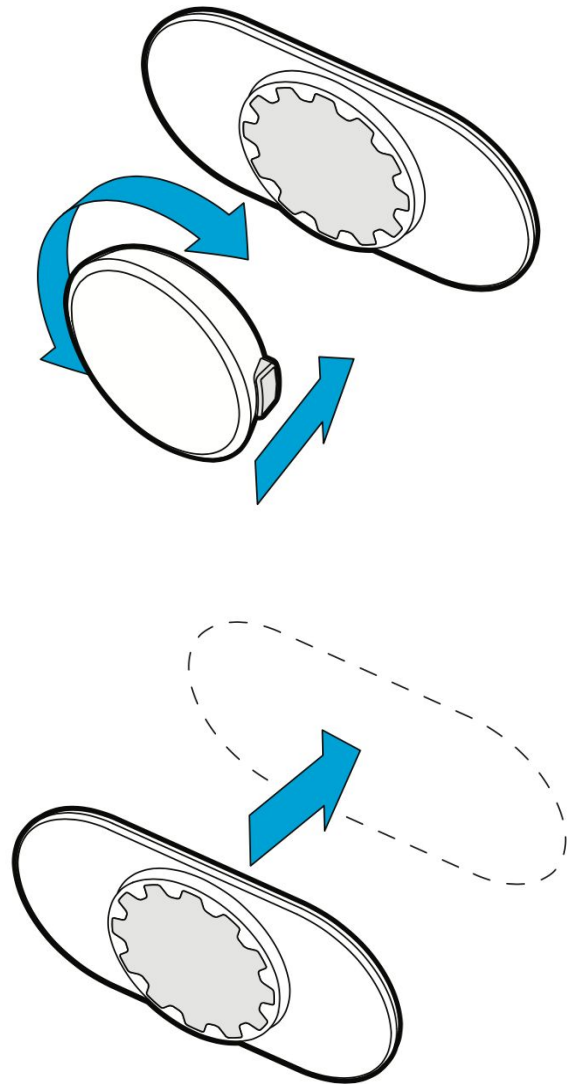
2b. Place dash mount

This mount attaches with adhesive to any vertical surface you choose.

Important! Before you mount the device, you should carefully consider the mounting location. The adhesive is very sticky and is not reusable once you've placed the mount.

1. Pick an appropriate surface to place the dash mount. The surface shouldn't be horizontal since Car Thing will then face upwards and not be visible when you drive.
Tip! Try out different locations with the protective strip still attached before deciding on a surface.
2. Use the cleaning cloth to clean the chosen surface.
3. Pull off the protective strip from the dash mount.
4. Place the mount on your chosen surface. Press firmly for about 30 secs to make sure the adhesive attaches.
Important! The adhesive needs about a day to set. Don't strain the mount with excessive force or expose it to direct sunlight during this time.
5. To attach Car Thing you need to first attach the magnet to the mount, see [Attach magnet](#) for instructions.

Important! Go to the [Product and Safety information](#) for important safety information when using the mounts



2c. Place vent mount

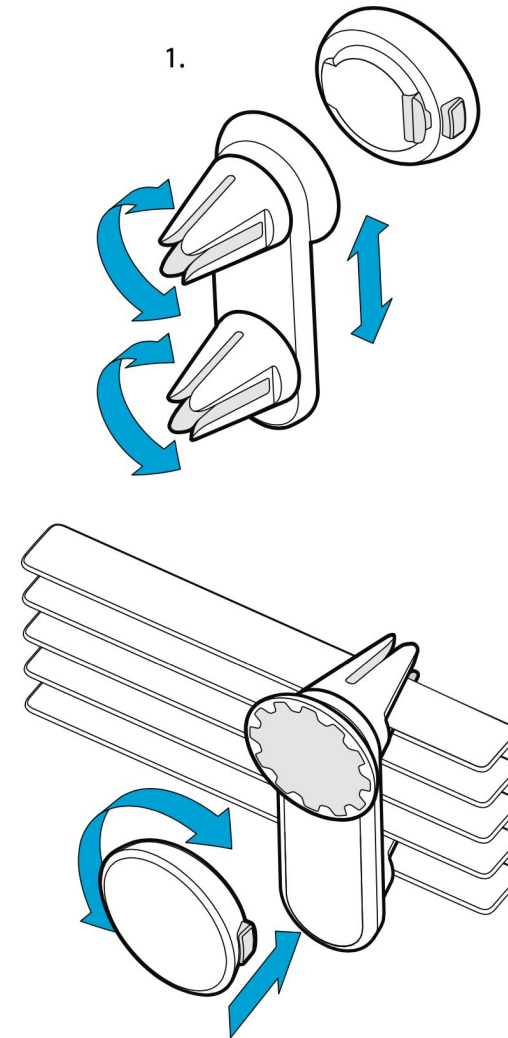
This mount has prongs that attach to the bars of a vent. The prongs slide on tracks which makes it possible for you to adjust the mount to the positioning of the vents in the car.

Tip! The mount can be placed vertically or diagonally as well as horizontally, depending on the orientation of the vent bars. Try it out to find the position that gives the best stability. Also try to position it as high as possible to avoid air flow interfering with the device's microphones.

Important! If possible you should turn off the vent as the air flow from the vent can cause noise interference, making it harder for Car Thing to hear you. If disruptive wind noise is detected a message will be shown on the screen of the device.

1. Ensure the vent you've chosen is in the open position.
2. Slide and twist the prongs to fit your vent. Mount onto two separate bars if possible for a stable position. The gaps between the prongs differ in width, so you might need to turn them depending on the thickness of the bars.
3. Push firmly but carefully to place the mount on the vent.
4. To attach Car Thing you need to first attach the magnet to the mount, see [Attach magnet](#) for instructions.

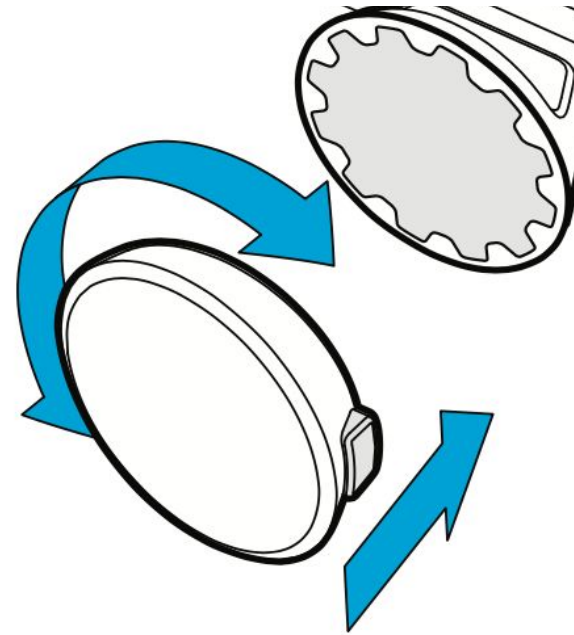
Important! Go to the [Product and Safety information](#) for important safety information when using the mounts.



3. Attach magnet

The backside of the magnet attaches to the mount. It is used to angle the device into an appropriate position for you to see and interact with while driving.

1. Turn the magnet to choose the angle of Car Thing.
2. Fit the back of the magnet into the socket on the mount. Insert the side opposite the button first.
3. Press the button on top and push that side down.
4. Release the button once the magnet is in place.



4. Attach Car Thing

The backside of Car Thing attaches to the magnet. When you leave the car it's easy to detach the device from the magnet by pulling it towards you. You don't have to detach the magnet from the mount.

1. Attach Car Thing to the magnet by placing the back of the device, where the label is, against the magnet.
2. Adjust the position slightly by turning the device on the magnet.

5. Secure the cable

After you've set Car Thing up and mounted it, you can use the cable clips to secure the power cable. The clips allow you to arrange the cable in a neat and tidy way to keep it away from important functions in the car.

Note: It might be easier to place the cable in the openings first, and then place the clips.

1. Decide on appropriate spots to place the cable clips out of the way from important functions in the car.
2. Clean the chosen spots with the cleaning cloth.
3. Peel off the protective cover from the back of the cable clips.
4. Place the cable clips. Press firmly for about 30 secs to make sure the adhesive attaches.
Important! The adhesive needs about a day to set. Don't strain the clips with excessive force or expose them to direct sunlight during this time.
5. Open the cable clips along the center.
6. Place the cable in the opening.

Remove parts

Important! To avoid damage, use both hands and firm and steady movements when you remove a mount. Never yank on them.

Remove CD mount

Detach Car Thing from the mount before removing it. This makes it easier to remove the mount and also prevents damaging Car Thing.

1. Flatten the mount slightly.
2. Gently slide one end of the mount out from the CD slot.
3. Slide the other end out.

Remove dash mount

Detach Car Thing from the mount before removing it. This makes it easier to remove the mount and also prevents damaging Car Thing.

The best way to detach the dash mount is by using dental floss or a similar type of string.

1. Put the string behind the mount.
2. Move the string back and forth in a sawing motion to detach the adhesive.
3. Clean the surface with a cleaning cloth to remove residual stickiness.

If you don't have dental floss available it's possible to detach the dash mount by carefully pulling on it and wiggle it back and forth to loosen the adhesive.

Important! Never use a sharp object, such as a knife or scalpel, as this could damage your dashboard.

Remove vent mount

Detach Car Thing from the mount before removing it. This makes it easier to remove the mount and also prevents damaging Car Thing.

1. Slide the prongs of the mount towards you until the mount is completely out of the vent.

Detach magnet

The magnet is easy to detach from the mount. This makes it easy to switch which mount you use.

Detach Car Thing from the magnet before removing it from the mount.

1. Press down on the button on the magnet.
2. Pull the magnet away from the mount.

Detach cable clips

The clips can be detached from the surface where you put them but they can't be reused since the glue will be gone.

1. Pull the clips away from the surface they're attached to. You might have to wiggle them a bit to loosen.

Tip! Use dental floss to peel away the clips if they're hard to remove with your fingers. (refer to the instructions for removing dash mount for details regarding how to do this)

Clean the surface with a cleaning cloth afterwards to remove any residual stickiness.

Preset buttons.

The preset buttons make it easy for you to save and find your favorite music and podcasts.

The preset buttons come with pre-picked default options set to them. You can replace these whenever you want.

Play a preset

When you want to play something that is saved to a preset button you can do it in one of these ways:

- Say “Hey Spotify, play preset {number 1-4}”.
- Press the preset button for the option you want to play.

View presets

Click on a preset button to see on the screen what is saved to the preset buttons. The option you clicked will start playing immediately.

You can also see what is set to the preset buttons in the Spotify App.

Set a preset

When you hear something you want to set to a preset button you can do so in one of these ways:

- Say “Hey Spotify, save to preset {number 1-4}”.
- Press and hold the preset button for the option you want to save to.

Note: Anything previously saved to a preset button is replaced when you save something new to it.

Availability

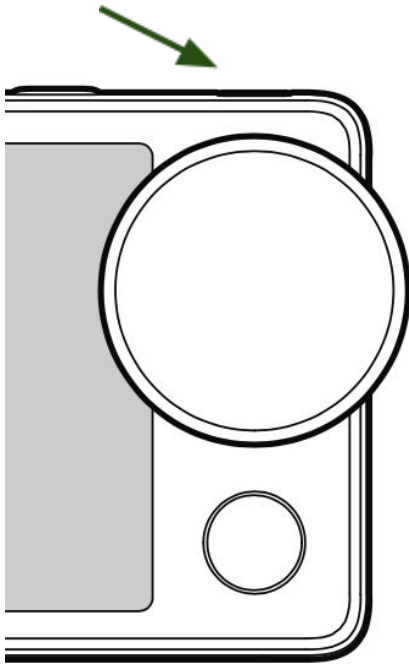
Content that you set to the preset buttons are always available for you to listen to, even in situations with limited connection. Up to an hour of content can be played from each preset.

Possibility to download presets?

Settings.

Settings are available when you click the button on the top right on the device. Here you can adjust settings for the device, and also find information about the device. Use the dial to browse between the different options.

This button



In-motion blocking

The device detects when the car is in motion (by using the accelerometer and gyro in your phone).

When the car is in motion, most of the **Settings** menu is not available for safety reasons. The only option available is **Microphone** so you're able to make the device start or stop listening for requests.

Turn on/off microphone

When the microphone is turned off Car Thing won't listen for requests from you.

1. Click the **Settings** button.
2. Find **Microphone** in the list.
3. Press the dial to turn the microphone on/off.

You can also tell the device to turn off the mic by saying "Hey Spotify, mic off".

Add phone connection

You can save several phone connections on Car Thing. This makes it easy to switch between phones if several people use the same device.

1. Click the **Settings** button.
2. Find **Phone connection** in the list.
3. Click **Add new phone**.

4. Go to the Bluetooth settings in your phone and connect to Car Thing to switch to this phone.

Forget phone connection

By forgetting a phone connection it will no longer be saved in the list of available connections.

1. Click the **Settings** button.
2. Find **Phone connection** in the list.
3. Find the phone connection you want to forget in the list.
4. Click **Forget**.

Note: If this is the phone connection currently used Car Thing will ask if you really want to forget the connection.

Switch voice

You can pick which voice the device uses when it talks to you.

1. Click the **Settings** button.
2. Find **Voice** in the list.
3. Turn the dial to switch between the voice options.
4. Press the dial to pick a voice.

Adjust brightness

You can change the brightness of the screen.

1. Click the **Settings** button.
2. Find **Options** in the list.
3. Find **Brightness** in the list.
4. Turn the dial right to make the screen brighter and turn the dial left to make the screen less bright.

Help

You can get help on how to use Car Thing by going to **Settings > Help**.

Here you can access brief help information in text form about different topics.

About

Get information about Car Thing by going to **Settings > About**. Here you'll find:

- Serial number
- IMEI number
- FCC label
- App version
- OS version
- Voice version
- Language version

Restart

When you restart the device it will turn off and then turn back on. This can be a solution if you're having issues with your device.

1. Click the **Settings** button.
2. Find **Restart** in the list.
3. Press the dial.

Turn on/off device

Car Thing turns on automatically when you connect it to power and turns off automatically when you disconnect it from power.

You can also turn the device off in the **Settings** menu.

1. Click the **Settings** button.
2. Find **Power off** in the list.
3. Press the dial to turn off.

Factory reset.

By doing a factory reset you will clear all saved data from the device.

1. Click the **Settings** button.
2. Find **Factory reset** in the list.
3. Press the dial.

The following data will be cleared when you perform a factory reset:

- User data such as:
 - Bluetooth settings
 - Preset settings
 - User settings
- Fetched content
- App data
- Downloaded (but not installed) app updates

OS updates performed on the device won't be cleared during a factory reset.

Onboarding

Here you can access an interactive tour that shows you the different features of Car Thing and lets you try them out.

1. Click the **Settings** button.
2. Find **Onboarding** in the list.
3. Press the dial.
4. Turn the wheel to find the tour you want to take part of.
5. Press the dial to start the tour.

Updates.

Updates will be regularly available for the device. These updates will be downloaded to your phone and then transferred to the device.

Updates under 10 MB will always be performed automatically, regardless of current network connection, without the user getting a message about it.

Updates over 10 MB will only be performed automatically if the user has chosen that setting on their phone. Otherwise a message will pop up that asks if the user wants to download on cellular or wait until there's wi-fi connection available.

The update will at most take a few minutes to perform.

Network connection

The update is dependent on having a network connection on your phone. If the network connection is broken during the update it will resume when you have connection again.

First use

When first starting up the device updates need to be performed. These updates will may take a while longer, so it's recommended that you start the updates and then continue with the rest of the setup while the updates are in progress.

Smart caching.

With smart caching you will be able to seamlessly continue to enjoy music and podcasts even when there's limited network connection, such as when driving through a tunnel.

What is available?

- A few songs ahead of what is currently playing is always cached. This means less risk of streaming interruptions due to short periods of limited network connection.
- Music and podcasts that you have listened to recently are cached on the device.
- The options set to the preset buttons are always available, with content able to play for up to an hour.

What's not available?

You can't ask for or play music or podcasts that you haven't listened to recently on the device.

Phone functionality.

Calls

You can still receive phone calls, and perform any other regular actions like receiving notifications, on your phone when it's connected to Car Thing.

The device will prioritize incoming phone calls and pause the music so you can answer. The music will resume after the call has ended.

Notifications

Notifications will be received by your phone as usual while you're connected to Car Thing.

Apps

You can use other apps, such as map services, while the phone is connected to Car Thing.

New user.

Car Thing can be used by or gifted to another user. The new user needs to also have the Spotify subscription Individual/Duo/Family/Student.

The new user just needs to connect the device to their phone. They also need to connect their phone to the sound system in their car.

If you want to ensure that all your data is cleared from the device before giving it away you can do a factory reset beforehand.

For more information go to [Factory reset](#).

New car.

You can use the device in different cars. Just connect to the car's sound system with Bluetooth (or AUX or USB) the first time you set the device up in a new car.

If you want to use the same mount you need to move that as well.

Sound control.

Sound quality

The quality of the sound played through Car Thing is dependent on the car's sound system and the settings on your phone.

Headphones

You can't connect the device to Bluetooth headphones.

Volume

After you have connected your phone to your car's head unit you will be able to use the volume control on your car stereo.

Also with your voice?

If the volume is very high or very low you may have to adjust it on your phone initially.

Troubleshooting.

Car Thing won't power on

- **Turn on the ignition in your car.** In some cars the outlet won't supply power until the ignition is turned on.
- **Make sure the cable is connected properly.** The cable needs to be connected to the outlet on the backside of Car Thing and a 12V outlet in the car via the adapter.

The message Power problem is shown on screen

- **Ensure that the outlet has the right voltage.** The outlet needs to be 12V.
- **Restart the device.** You can do this from the Settings menu.

Can't connect my phone to the device

- **Download the Spotify app.** You need to have the Spotify app installed to use Car Thing.
- **Check if the phone is supported.** If the phone doesn't have the right Bluetooth support you can't connect it to Car Thing.
- **Connect via Car Thing.** If you can't connect via your phone (perhaps you've made the phone forget the device) go to **Settings > Phone connection** to connect via the device instead.

Can't connect phone to the sound system with Bluetooth

- **Use AUX.** If you can't connect using Bluetooth it should be possible to use an AUX cord to connect instead. AUX cord is not included with Car Thing.
- **Refer to your car's driver's manual.** Read the instructions for how to connect your phone to Bluetooth in your particular car.

No sound from speakers

- **Check the stereo setting.** The car stereo needs to be on the right setting for the option you're using to connect to the sound system.
- **Turn up the volume.** Try first on your phone and then on the car stereo. It may be that the sound is working, but the volume is too low to hear.

Sound is coming from phone instead of speakers

- **Connect phone to the sound system in your car.** The phone needs to be connected to the sound system with Bluetooth or AUX for sound to play through car speakers.

Voice requests aren't working

- **Turn on the microphone.** The microphone needs to be turned on for Car Thing to hear your request. Press the **Settings** button on the top-right of the device and go to **Microphone** to turn the microphone on if it's off.
- **Ensure that Car Thing is listening.** Always remember to start your requests with saying "Hi Spotify". The green circle needs to show before you can give a voice request.
- **Eliminate noise.** Make sure there's no excessive noise interference, for example from open windows or air vents. If you use the vent mount the voice functionality might be affected by wind noise. A message will be shown on the screen to indicate this. Turn off the vent or use another mount to solve this issue.
- **Speak clearly.** Face the Car Thing and make your request again, speaking clearly, at normal speed, without emphasising certain words.
- **Rephrase your request.** Car Thing might not have found a match for the phrase you used.
- **Check your connectivity.** If Car Thing still can't understand or reply to you it might be due to your phone having no or limited internet connection. Try again once the connection has improved.

Cleaning.

If your device needs to be cleaned, we recommend you use a lint free and scratch resistant cloth (microfibre preferred). Use this cloth to clean both the screen and all other external parts. Dampen the cloth slightly if needed and clean the screen using soft, even strokes.

Important! Never use any type of cleaning solvent or other chemical agents to clean the device.

Recycling and disposal.

Visit support.carthing.com for information about how to do this.

If this is not possible you should abide by your local regulations regarding recycling and disposal of electronic waste. The device must be disposed of separately from ordinary household waste because it is considered electronic equipment. Ensure that you dispose of your device at a recycling center.

Technical specifications.

Model number

- **Car Thing:** YX5H6679
- **Power Adapter:** IBD322-3.1A

Dimensions

- Width: 4.80" (122 mm)
- Height: 2.52" (64 mm)
- Depth: 0.47" (12 mm) at thickest part.

Display

- Size: 3.97" TFCM Display
- Pixels: 480x800, 0.108(H)mm × 0.108 (V)mm

Weight

- Car Thing: 3.17 oz (90 g)
- Power Adapter: 0.71 oz (20 g)
- CD mount: 0.32 oz (9 g)
- Vent mount: 0.85 oz (24 g)
- Dash mount: 0.28 oz (8 g)
- Magnet: 0.85 oz (24g)

Wireless technology

- Bluetooth 4.2
 - Supported Profiles: SPP
 - Dual Role: BR/EDR/BLE

Protocol

Car Thing supports protocol iAP2.

Ports & Connectors

- Power: USB 2.0 type C

Electrical rating

- **Car Thing:** 5.0V - 1.2A
- **Power Adapter:** Electrical Rating: 5.25V – 3.1A Max

Power

- Average power consumption, operational: 5W
- Peak power consumption: 10W
- Idle power consumption, 12V plug: 0.06W

Environmental conditions (for Car Thing and adapter)

- Operational temperature: -4 °F to +113 °F (-20 °C to 45 °C)

- Storage temperature: -40 °F to +176 °F (-40 °C to +80 °C)

Supported phones

Car Thing is tested with the following models:

<list of phone models that Daytona team has tested with>

A legal disclaimer that we might be wrong and therefore cannot take the responsibility with full certainty.

Important Product and Safety Information.



Read all product warnings, instructions and safety information contained herein before use of Car Thing. Keep this information for future reference. Failure to follow these instructions or heed these warnings could result in fire, electrical shock, bodily injury, or property damage.

Warning Against Distracted Driving. Distracted driving can be dangerous and result in serious injury, death or property damage. Safe operation of your vehicle is completely your responsibility. Do not allow interactions with Car Thing to distract you while driving. Always pay full attention to the road and comply with all applicable laws regarding the use of electronic devices while driving. Always observe road signs, traffic laws and road conditions.

Do not set up, mount or adjust the mounting of your device while driving. Follow the set-up and mounting instructions provided to you by Spotify to mount Car Thing while parked in a safe place.

Warning Against Improper Installation. Follow the instructions provided to mount Car Thing with the included accessories. Place the device and any cables so that they do

not obstruct the driver's view or get in the way of vehicle operating controls, such as the steering wheel, foot-pedals or the driver's feet. Do not place the device in front of or above any airbag. Any such obstruction or interference could result in serious injury, death or property damage. Check and follow applicable laws and requirements about where you can mount your device. IT IS THE USER'S RESPONSIBILITY TO MOUNT THE DEVICE IN ACCORDANCE WITH ALL APPLICABLE LAWS AND ORDINANCES.

Use Provided Mounts with Care. Car Thing comes with various mounts to use with your vehicle. These mounts may not work with all vehicle models. Use care when installing Car Thing. Spotify is not responsible for any damage to a vehicle caused by affixing or mounting Car Thing on vents or other locations at the time of installation or later. The mounts may not stay attached in all circumstances. Do not place the device or mount where it will become a distraction should it become detached.

Handle with Care. Car Thing is an electrical device that should be handled with care. Avoid dropping Car Thing or its accessories. Do not expose Car Thing or its accessories to food, moisture or liquids. Keep away from dust. Avoid extreme temperatures. Do not use Car Thing, the adapter or cables if they appear to be damaged. Clean the device with a soft cloth that is slightly damp with water; be careful not to wipe it with anything abrasive or harsh chemicals.

Electrical Safety. Only use power adapters and cables included, or approved for use, with Car Thing. Do not use Car

Thing in any area with a potentially explosive atmosphere, such as fueling areas. Do not disassemble Car Thing or its adapter. Comply with signs and notices that prohibit or restrict the use of electronic devices.

Temperature Warning. Prolonged heat or cold exposure may damage your Car Thing. For example, do not leave Car Thing unattended in your vehicle in direct sunlight. To prevent heat or cold damage, take Car Thing with you when you leave the vehicle, or store in your vehicle's locked glove compartment. Do not puncture or incinerate the device.

When storing Car Thing for an extended time, store within the following temperature range: from -40 to 176°F (from -40 to 80°C). Do not use Car Thing outside of the following temperature range: from -4 to 113°F (from -20 to 45°C).

Risk of Hearing Loss. Listening to sound at high volumes may damage your hearing. To prevent hearing loss, do not listen to loud music or noises for a long period of time.

Medical Conditions. Do not use Car Thing if you have any medical condition that you believe could be affected by Car Thing. Consult your physician before use of Car Thing.

Medical Device Warning. Car Thing generates, uses and can radiate radio frequency energy which may interfere with certain medical devices, such as pacemakers, defibrillators, or other medical devices. Keep Car Thing a safe distance away from your medical device. For specific information about your medical device, talk to your doctor and medical device

manufacturer. Stop using Car Thing if you suspect it is interfering with your medical device.

Repetitive Motion. Repetitive activities such as tapping or scrolling may lead to discomfort in your fingers, hands, arms, or neck. If you experience discomfort after using Car Thing, stop use and consult your doctor.

Choking Hazard. Car Thing is not a toy and should not be played with by children. Car Thing and its accessories may present a choking hazard. Keep Car Thing and accessories away from small children.

FCC Compliance Statement. This device complies with part 15 of the FCC Rules. Operation is subject to the following two conditions: (1) this device may not cause harmful interference, and (2) this device must accept any interference received, including interference that may cause undesired operation.

Note: This equipment has been tested and found to comply with the limits for a Class B digital device or external switching power supply, pursuant to part 15 of the FCC Rules. These limits are designed to provide reasonable protection against harmful interference in a residential installation. This equipment generates, uses and can radiate radio frequency energy and, if not installed and used in accordance with the instructions, may cause harmful interference to radio communications. However, there is no guarantee that interference will not occur in a particular installation. If this equipment does cause harmful interference to radio or television reception, which can be determined by

turning the equipment off and on, the user is encouraged to try to correct the interference by one or more of the following measures:

- Reorient or relocate the receiving antenna
- Increase the separation between the equipment and receiver
- Connect the equipment into an outlet on a circuit different from that to which the receiver is connected
- Consult the dealer or an experienced radio/TV technician for help.

Pursuant to Section 15.21 of the FCC rules, changes or modifications not expressly approved by the party responsible for compliance could void the user's authority to operate the equipment.

The party responsible for FCC compliance is: Spotify USA Inc., 4 World Trade Center, 150 Greenwich Street, 62nd Floor, New York, NY 10007, USA. If you wish to contact Spotify visit support.spotify.com.

Device Name: Car Thing
Model: YX5H6679

Radio Operating Frequency: This product contains a Bluetooth radio that operates in the frequencies between 2400 - 2490 MHz and transmits at maximum 0 dBm output power (radiated).

Information Regarding Exposure to Radio Frequency Energy. This equipment complies with FCC radiation

exposure limits set forth for an uncontrolled environment. This equipment should be installed and operated with minimum distance 20 cm between the radiator & your body.

RSS-Gen & RSS-247 statement.

- This device complies with Industry Canada licence-exempt RSS standard(s).
- Operation is subject to the following two conditions: (1) this device may not cause interference, and (2) this device must accept any interference, including interference that may cause undesired operation of the device.
- Le présent appareil est conforme aux CNR d'Industrie Canada applicables aux appareils radio exempts de licence.
- L'exploitation est autorisée aux deux conditions suivantes : (1) l'appareil ne doit pas produire de brouillage, et (2) l'utilisateur de l'appareil doit accepter tout brouillage radioélectrique subi, même si le brouillage est susceptible d'en compromettre le fonctionnement.

RSS-102 Statement.

- This equipment complies with Industry Canada radiation exposure limits set forth for an uncontrolled environment.
- Cet équipement est conforme à l'exposition aux rayonnements Industry Canada limites établies pour un environnement non contrôlé.

Follow All Applicable Laws. National, federal, state, or local laws or requirements may apply to your use of Car Thing. Spotify does not assume any responsibility for any fines, penalties or damages that may be incurred as a result of any

national, federal, state, or local laws or requirements relating to the use of Car Thing.

Repair. Do not attempt to repair Car Thing. Contact Spotify support for information on repairs. Contact details can be found at: support.spotify.com.

Recycling Your Device. Contact your state or local waste disposal department to determine how to dispose of or recycle Car Thing in accordance with applicable laws and regulations.

Declaration of Conformity. Spotify declares that this product is in compliance with the essential requirements and other relevant provisions of Directive 2014/53/EU. To view the full declaration of conformity go to:
carthing.spotify.com/legal/declaration-of-conformity.

Made for Apple. Use of the Made for Apple badge means that an accessory has been designed to connect specifically to the Apple product(s) identified in the badge and has been certified by the developer to meet Apple performance standards. Apple is not responsible for the operation of this device or its compliance with safety and regulatory standards.

Can be found here:

https://docs.google.com/document/d/1mGS_GaoF92rFM3bAGEPaBn4UqR8Dq5jdgr_dOPkXUKo/edit?ts=5f6b41ed