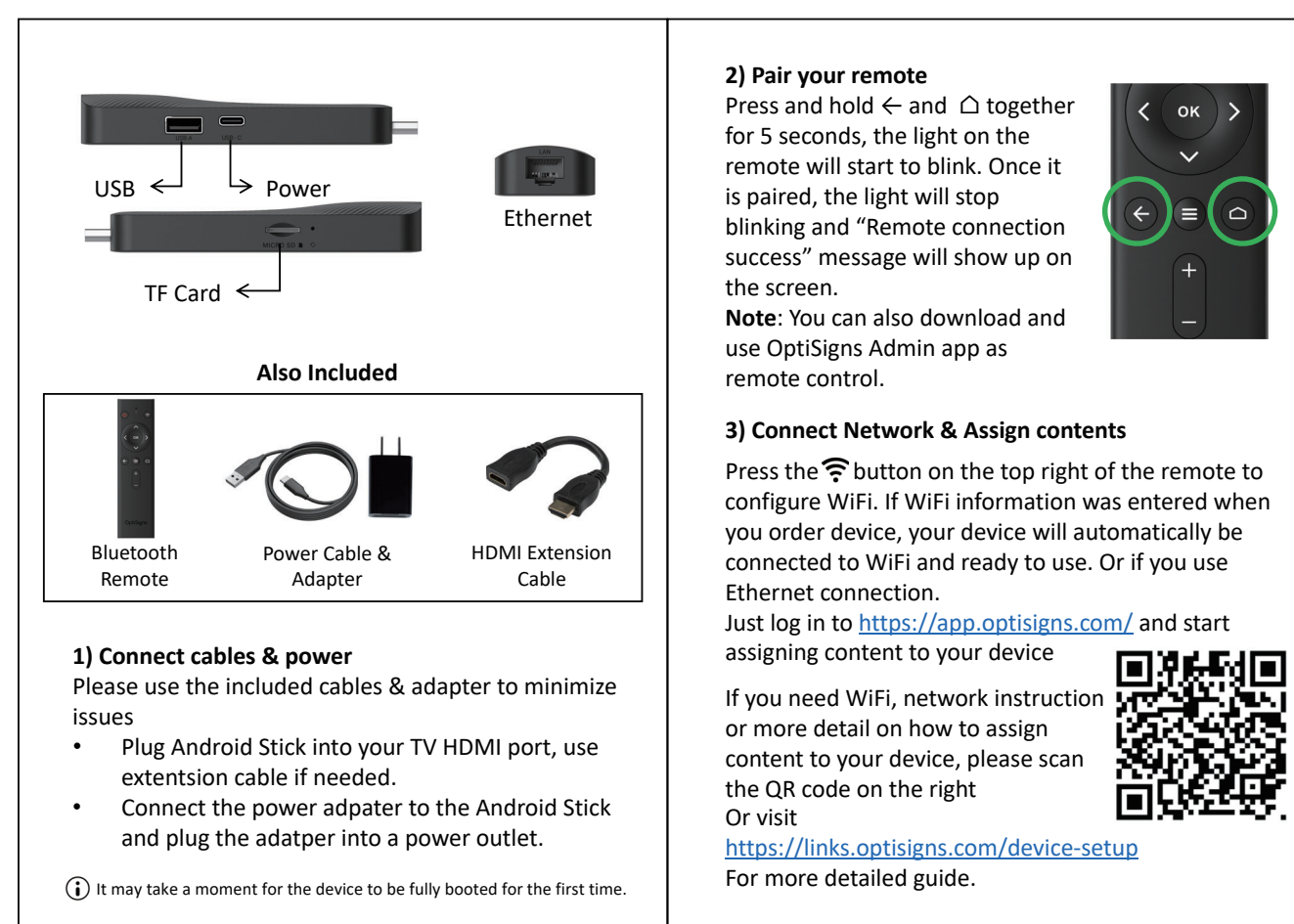


封底

封面



技术要求:

1. 成形尺寸: 88*124.3mm
2. 产品不能变形、压痕、划伤、脏污等缺陷
3. 图案文字印刷清晰, 色差在允许范围内
4. 157g双铜纸, 单黑正反面印刷, 对折

更改记录	DCN/ECN编号	版本	变更内容	签名	日期
设计			名称 说明书	材料	
产品部审核				单位	mm
市场部审核				共 张	第 张
软件部审核	未注尺寸公差		型号		
质量部审核	0<L≤200	1mm	图号	SY.SMS. GZ2306028	
审批	200<L≤400	2mm	物料编号	3301-ML0484-PP0A	
			深圳感臻智能股份有限公司 Shenzhen SEI Robotics Co., Ltd.		

This device complies with Part 15 of the FCC Rules. Operation is subject to the following two conditions: (1) this device may not cause harmful interference, and (2) this device must accept any interference received, including interference that may cause undesired operation.

Changes or modifications to this unit not expressly approved by the party responsible for compliance could void the user's authority to operate the equipment.

NOTE: This equipment has been tested and found to comply with the limits for a Class B digital device, pursuant to Part 15 of the FCC Rules. These limits are designed to provide reasonable protection against harmful interference in a residential installation. This equipment generates, uses and can radiate radio frequency energy and, if not installed and used in accordance with the instructions, may cause harmful interference to radio communications. However, there is no guarantee that interference will not occur in a particular installation. If this equipment does cause harmful interference to radio or television reception, which can be determined by turning the equipment off and on, the user is encouraged to try to correct the interference by one or more of the following measures:

- Reorient or relocate the receiving antenna.
- Increase the separation between the equipment and receiver.
- Connect the equipment into an outlet on a circuit different from that to which the receiver is connected.
- Consult the dealer or an experienced radio/TV technician for help.

This device and its antenna(s) must not be co-located or operation in conjunction with any other antenna or transmitter.

Radiation Exposure Statement

To maintain compliance with FCC's RF Exposure guidelines, This equipment should be installed and operated with minimum distance of 20cm from your body.