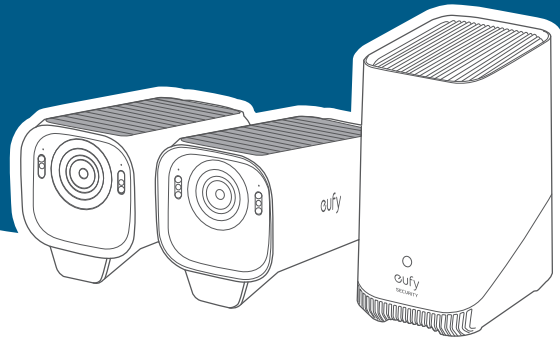




eufyCam S3 Pro

Quick Start Guide



The number of cameras varies.

For Video / User Guide / Support

What's in the Box

Make sure everything is included. Anything missing? Please contact support@eufy.com



x2/x3/x4

Cameras



HomeBase S380



x3/x4/x6

Mounting Brackets



Ethernet Cable



USB Charging Cable



Power Adapter
for HomeBase



x3/x4/x6

Positioning Stickers



x3/x4/x6

Screw Packs



Reset Needle &
Hard Drive Screws



x1/x1/x2

Backup Solar Panel(s)



Quick Start Guide



The number of cameras, accessories, and backup solar panel(s) varies depending on the kit you purchase.

Before Mounting

1. Download eufy Security App

Download and install the eufy Security app, then sign in or create an account.



eufy Security



Download on the
App Store

GET IT ON
Google Play



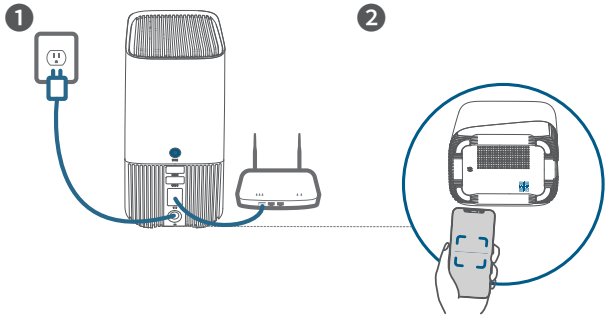
Anker Innovations Limited. All rights reserved. eufy Security and eufy Security Logo are trademarks of Anker Innovations Limited, registered in the United States and other countries. All other trademarks are the property of their respective owners.

Anker Innovations Limited
Unit 56, 8th Floor, Tower 2, Admiralty Centre, 18 Harcourt Road, Hong Kong

Model: T8162 T8030
51005004941_V1

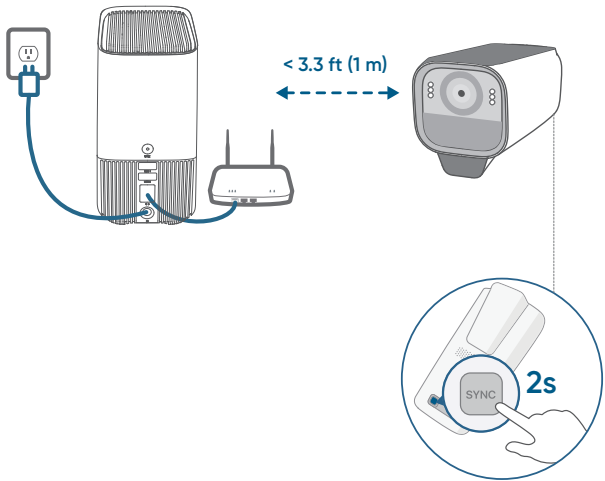
2. Add HomeBase

Follow the in-app instructions to add HomeBase.



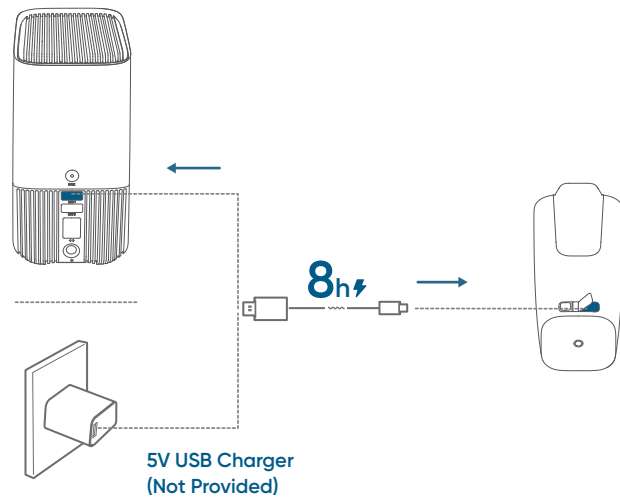
3. Add Cameras


Follow the in-app instructions to add cameras and sync them with HomeBase.



4. Fully Charge the Cameras

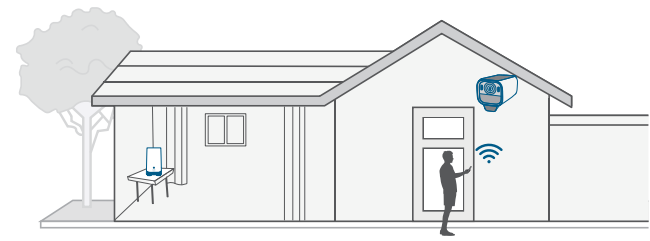
Fully charge the cameras before first use. This may take up to 8 hours for each camera.



 You can check the battery level in the app.

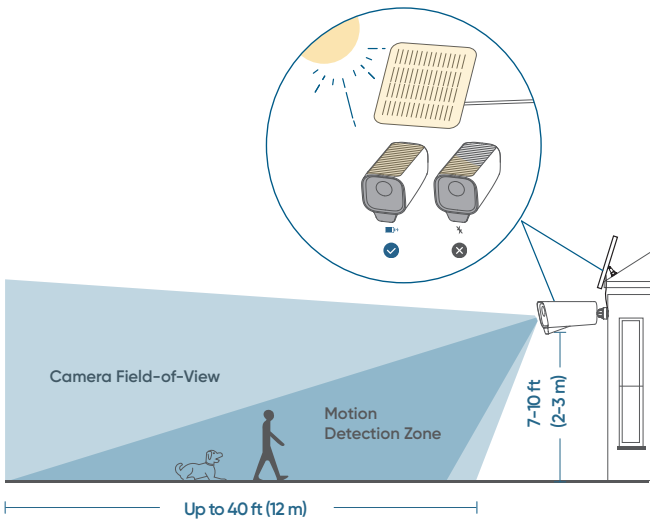
5. Check Wi-Fi Signal


Take the camera and your phone to the desired mounting location to test the Wi-Fi signal strength.



Mounting Your eufyCam

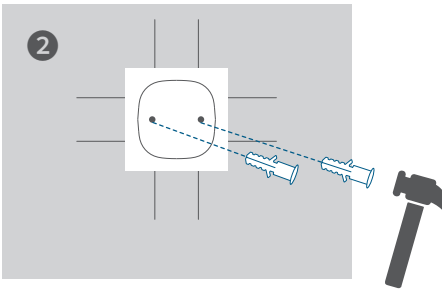
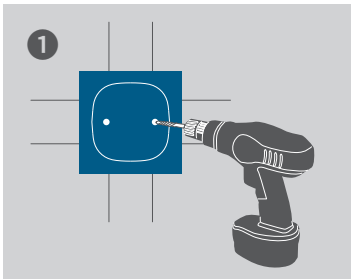
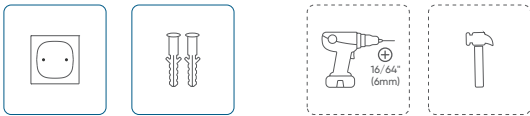
1. Choose a Location



 You may need a screwdriver, a 16/64" (6mm) drill, and a ladder.

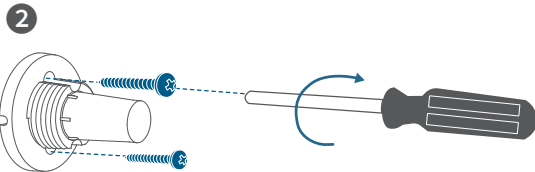
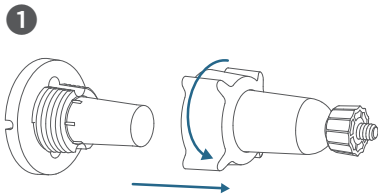
2. Position & Drill Holes (for Concrete or Brick Wall)

 Skip this step if you are installing it on a wooden wall.



3. Install the Mounting Base

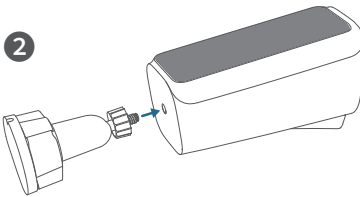
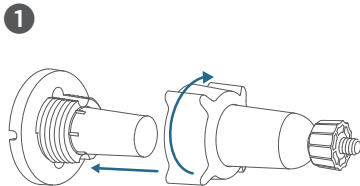
Rotate the knob on the mounting bracket to loosen and disassemble, then firmly install the mounting base using the 2 long screws provided.



4. Mount the Camera

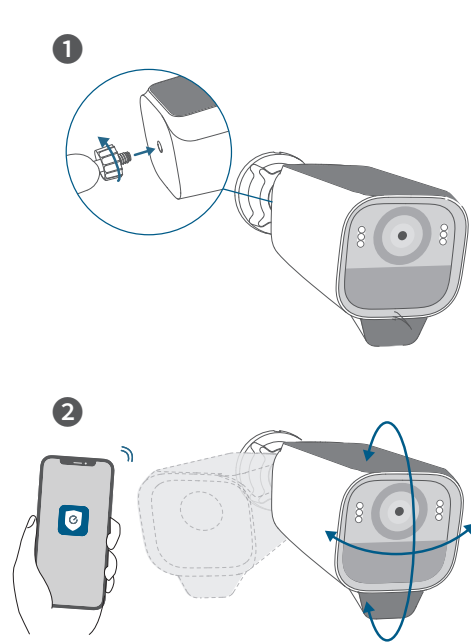
Attach the mounting bracket to the base by turning the large knob clockwise. Hold and screw the camera onto the bracket, then turn the small knob to secure.

 Do not remove the protective film during installation.



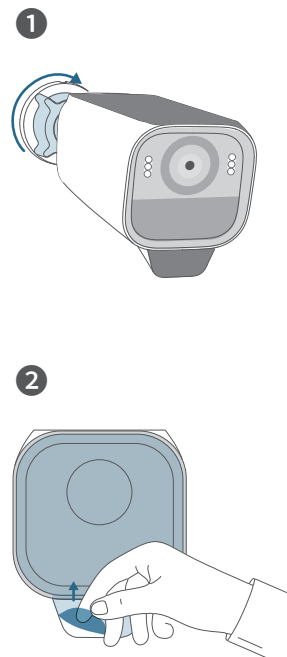
5. Adjust the Camera Field of View

Rotate the camera to get an optimal angle when viewing the live stream in the eufy Security app.



6. Tighten the Camera and Complete

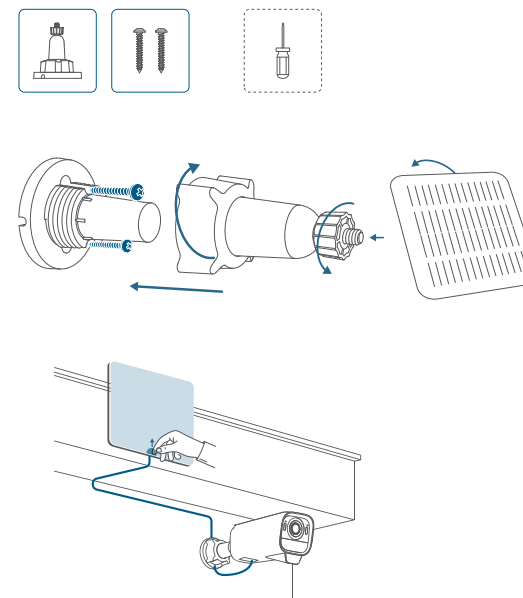
Turn the large knob to tighten and secure the camera.



⚠ Remove the protective film before use.

Mounting Backup Solar Panel

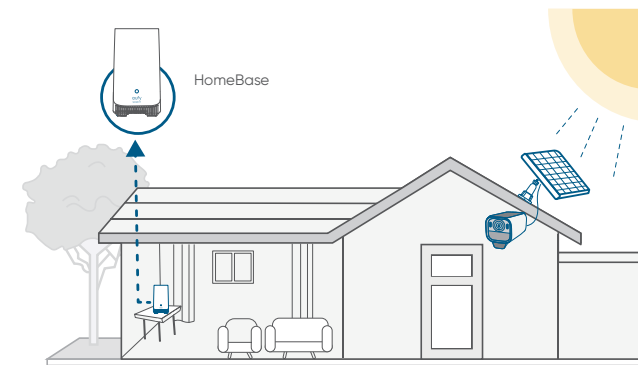
If you need to install the camera in areas with insufficient sunlight (such as under the eaves), please use the backup solar panel, which works in conjunction with the built-in solar panel.






⚠ Remove the protective film before use.

Find Out More

Congratulations!
You are now all set to use your eufyCam!
Please explore more in the eufy Security app.



Customer Service

-  12-month limited warranty
-  support@eufy.com
-  (US) +1 (800) 988 7973

 @EufyOfficial  @EufyOfficial  @EufyOfficial

Important Safety Instructions


- The suitable temperature for T8162 and accessories is -20°C to 50°C (USB charging temperature is 0°C to 45°C). The suitable temperature for T8030 and accessories is -10°C to 45°C .
- Unless specifically indicated that it is safe to do so in the user guide or instruction manual, do not use this device in an environment that exceeds the recommended low or high temperature.
- Unless specifically indicated that it is safe to do so in the user guide or instruction manual, avoid exposing your device to direct sunshine or excessively wet environments.
- When Charging , please place the device in an environment that has a normal room temperatureand good ventilation.
- For pluggable equipment, the socket-outlet shall be easily accessible.
- Please ensure to use only the adapter offered by the manufacturer. Using unauthorized adapter may cause danger and violate the authorization of the device and the guarantee article.

Warning

- Replacement of a battery with an incorrect type can defeat a safeguard;
- Disposal of a battery into fire or a hot oven, or mechanically crushing or cutting of a battery can result in an explosion;
- Leaving a battery in an extremely high temperature surrounding environment can result in an explosion or the leakage of flammable liquid or gas; and
- A battery subjected to extremely low air pressure may result in an explosion or the leakage of flammable liquid or gas.

⚠ WARNING

- **INGESTION HAZARD:** This product contains a button cell or coin battery.
- **DEATH** or serious injury can occur if ingested.
- A swallowed button cell or coin battery can cause **Internal Chemical Burns** in as little as **2 hours**.
- **KEEP** new and used batteries **OUT OF REACH of CHILDREN**
- **Seek immediate medical attention** if a battery is suspected to be swallowed or inserted inside any part of the body.



The product contains a button/coin cell battery that cannot be replaced by the user.

a) Remove and immediately recycle or dispose of used batteries according to local regulations and keep away from children. Do NOT dispose of batteries in household trash or incinerate.

b) Even used batteries may cause severe injury or death.

c) Call a local poison control center for treatment information.

d) The compatible battery type CR1225 3V.

e) Non-rechargeable batteries are not to be recharged.

f) Do not force discharge, recharge, disassemble, heat above 45°C/113°F or incinerate. Doing so may result in injury due to venting, leakage or explosion resulting in chemical burns.

FCC Statement

This device complies with Part 15 of the FCC Rules. Operation is subject to the following two conditions: (1) this device may not cause harmful interference, and (2) this device must accept any interference received, including interference that may cause undesired operation.

Warning: Changes or modifications not expressly approved by the party responsible for compliance could void the user's authority to operate the equipment.

Note: This equipment has been tested and found to comply with the limits for a Class B digital device, pursuant to Part 15 of the FCC Rules. These limits are designed to provide reasonable protection against harmful interference in a residential installation. This equipment generates uses and can radiate radio frequency

energy and, if not installed and used in accordance with the instructions, may cause harmful interference to radio communications. However, there is no guarantee that interference will not occur in a particular installation. If this equipment does cause harmful interference to radio or television reception, which can be determined by turning the equipment off and on, the user is encouraged to try to correct the interference by one or more of the following measures: (1) Reorient or relocate the receiving antenna. (2) Increase the separation between the equipment and receiver. (3) Connect the equipment into an outlet on a circuit different from that to which the receiver is connected. (4) Consult the dealer or an experienced radio/TV technician for help.

FCC Radio Frequency Exposure Statement

The device has been evaluated to meet general RF exposure requirements. The device can be used in fixed/mobile exposure condition. The min separation distance is 20cm.

The following importer is the responsible party

Company Name: POWER MOBILE LIFE, LLC

Address: 10900 NE 8th St, Ste 501, Bellevue WA 98004

Telephone: 1-800-988-7973

IC Statement

This device complies with Industry Canada licence-exempt RSS standard(s). Operation is subject to the following two conditions: (1) this device may not cause interference, and (2) this device must accept any interference, including interference that may cause undesired operation of the device."

Le présent appareil est conforme aux CNR d'Industrie Canada applicables aux appareils radio exempts de licence. L'exploitation est autorisée aux deux conditions suivantes:

(1) l'appareil nedoit pas produire de brouillage, et

(2) l'utilisateur de l'appareil doit accepter tout brouillage radioélectrique subi, même si le brouillage est susceptible d'en compromettre le fonctionnement."

This Class B digital apparatus complies with Canadian ICES-003.

Cet appareil numérique de la classe B est conforme à la norme NMB-003 du Canada.

IC RF Statement

When using the product, maintain a distance of 20cm from the body to ensure compliance with RF exposure requirements.
Lors de l'utilisation du produit, maintenez une distance de 20 cm du corps afin de vous conformer aux exigences en matière d'exposition RF.



Your product is designed and manufactured with high-quality materials and components, which can be recycled and reused.



This symbol means the product must not be discarded as household waste and should be delivered to an appropriate collection facility for recycling. Proper disposal and recycling help protect natural resources, human health, and the environment. For more information on the disposal and recycling of this product, contact your local municipality, disposal service, or the shop where you bought this product.