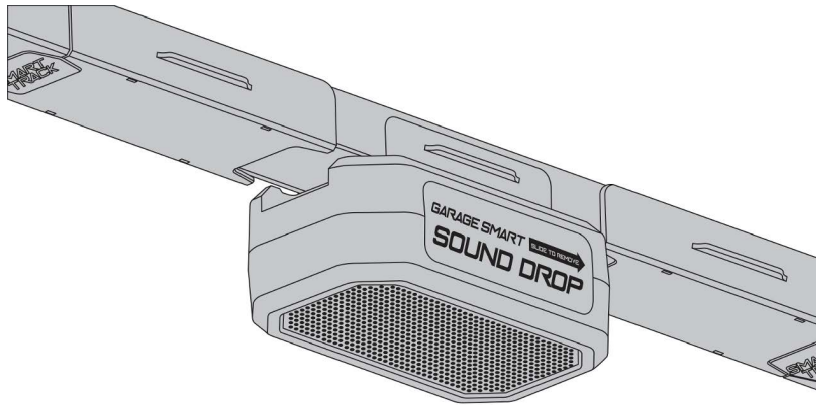


Sound Drop user manual



Please save this manual for future reference.

For a digital version of this manual, visit: www.garagesmart.com/manuals

TABLE OF CONTENTS

INTRODUCTION	2
FCC AND LEGAL STATEMENTS	3
PARTS IDENTIFIER	4
OVERVIEW OF THE SOUND DROP	5
INSTALLATION	
WALL INSTALLATION	6
TRACK INSTALLATION	8
POWERING THE SOUND DROP	9
PAIRING AND CONNECTING	10
TROUBLESHOOTING	11
LIMITED WARRANTY	12

INTRODUCTION

The Sound Drop is a Bluetooth-enabled speaker. With the Sound Drop you can stream music and audio from your smartphone, Amazon Echo Dot, or other Bluetooth-enabled devices.

With the built in microphone you can make and take hands free calls while paired to your phone.

The Sound Drop is designed to work with other Garage Smart products and mounts using your existing Garage Smart Track System.

Safety Warnings

- Read and follow all safety, installation, and operation instructions.
- Do not install or use near any heat sources.
- Do not install or use near water.
- Do not disassemble.
- Only power speaker with official Garage Smart power adapter

FCC STATEMENT:

This device complies with part 15 of the **FCC** rules. Operation is subject to the following two conditions: (1) this device may not cause harmful interference, and (2) this device must accept any interference received, including interference that may cause undesired operation.

Changes or modifications not expressly approved by the party responsible for compliance could void the user's authority to operate the equipment.

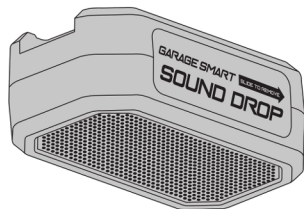
NOTE: This equipment has been tested and found to comply with the limits for a **Class B** digital device, pursuant to part 15 of the **FCC** Rules. These limits are designed to provide reasonable protection against harmful interference in a residential installation. This equipment generates uses and can radiate radio frequency energy and, if not installed and used in accordance with the instructions, may cause harmful interference to radio communications. However, there is no guarantee that interference will not occur in a particular installation. If this equipment does cause harmful interference to radio or television reception, which can be determined by turning the equipment off and on, the user is encouraged to try to correct the interference by one or more of the following measures:

- Reorient or relocate the receiving antenna.
- Reorient or relocate the receiving antenna.
- Reorient or relocate the receiving antenna.
- Consult the dealer or an experienced radio/TV technician for help important announcements

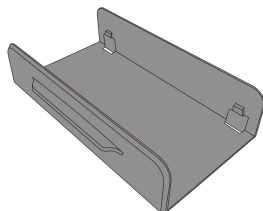
Radiation Exposure Statement

This equipment complies with **FCC** radiation exposure limits set forth for an uncontrolled environment. This equipment should be installed and operated with minimum distance 20cm between the radiator and your body.

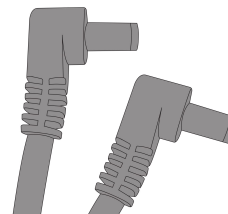
PARTS IDENTIFIER



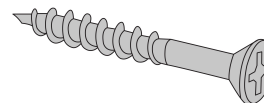
SOUND DROP (x1)



UNIVERSAL MOUNT (x1)

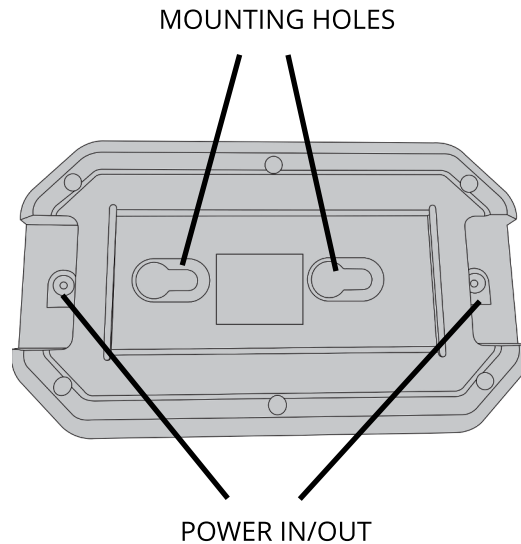
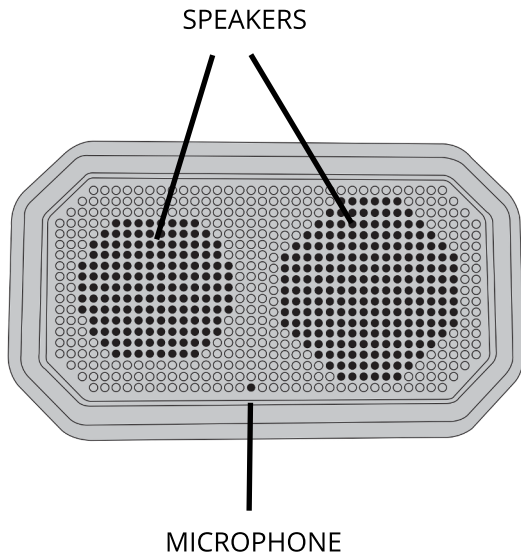


3ft DC POWER CABLE (x2)



MOUNTING SCREWS (x2)

OVERVIEW OF THE SOUND DROP



INSTALLATION

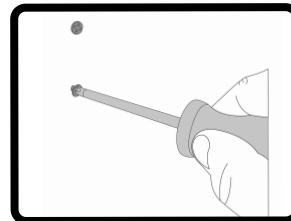
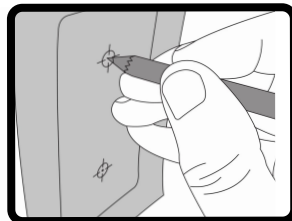
WALL MOUNT

1. Find a suitable location to mount the sound drop to the wall. Confirm that the DC cable will reach your Power Adapter or other Garage Smart product(s).

! NOTE

It is best to mount this product into a stud, but with caution, placing the screws into drywall is sufficient.

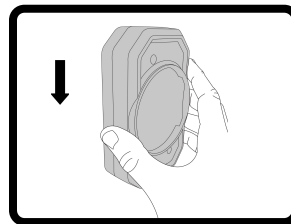
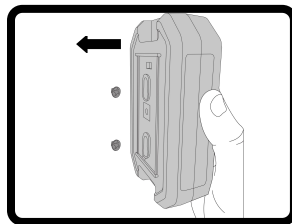
2. Screw the two wall mount screws into the chosen location exactly 2 inches apart (50.8 mm). Leave the screw heads about 1/4" (6.35 mm) away from the wall. Use the template on page 15 of this manual.



INSTALLATION

WALL MOUNT

3. Line up the product mounting holes with the screws as shown. Slip the product over the screws and slide downwards to lock into place.



! NOTE

The sound drop may be removed and the screws tightened for a tighter fit.

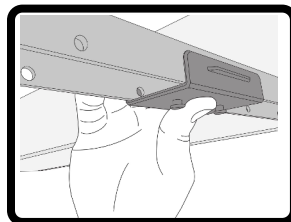
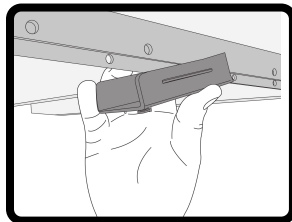
! NOTE

The Universal Mount is not used for wall mounting.

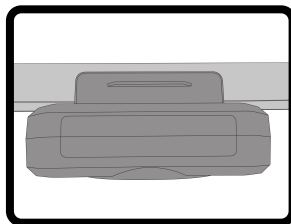
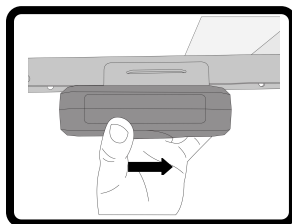
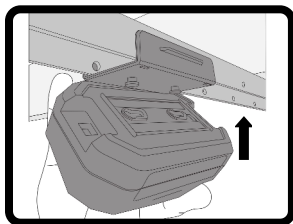
INSTALLATION

TRACK MOUNT

1. Clip the connector onto track.
The nubs should snap into place.



2. Align the pins with the holes in the product.
Press on and slide to lock in place.



POWERING THE SOUND DROP

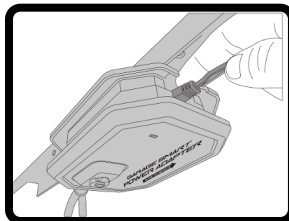
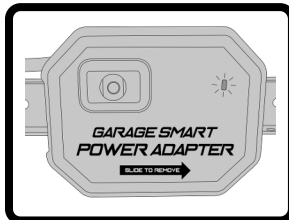
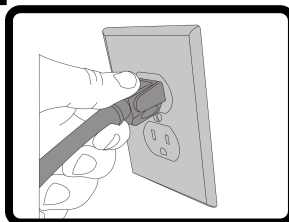
! NOTE

The Sound Drop requires the use of a Garage Smart Power Adapter.

1. Using the provided DC cable, the Sound Drop can be powered by directly plugging into the Power Adapter or by plugging into the power output port of the previous device on the track.

2. Additional devices on the track can be powered using the power output port on the Sound Drop.

3. Use track covers to support and organize cables in the track.



PAIRING AND CONNECTING

1. After powering the Sound Drop, the speaker will play the “power-on” chime.
2. Enable Bluetooth on the Bluetooth source device. (See the Bluetooth pairing and connecting information for the device).
3. Select ‘SoundDrop’ on the Bluetooth source device.
4. Wait briefly for the device to connect to the Sound Drop.
5. When connected, the Sound Drop will play the “connected” chime.

If the Sound Drop has previously paired to a device, it may be necessary to ‘Forget this Device’ on the previous device before the Sound Drop is discoverable.

TROUBLESHOOTING

1. The Sound Drop does not chime when plugged in: Make sure the Power Adapter is powered and that the LED is lit. Make sure the DC cables are fully inserted into the power in DC jack.

2. The Sound Drop is not discoverable on my Bluetooth device: Make sure the Sound Drop is powered on. Make sure that the Sound Drop is not currently connected to any other device. Briefly unplug the Sound Drop to reset.

3. When the Sound Drop is plugged in all my DC Garage Smart products lose power: The Garage Smart Power Adapter has a maximum power capacity of 60W. If too many devices are connected together the Power Adapter will briefly shut down. Remove extra devices from the track or start a new track using a new Power Adapter.

LIMITED WARRANTY

Limited Three-Year Warranty on Hardware

Garage Smart offers a limited three-year warranty on the hardware components of its lifting systems. If a defect in the hardware, or any component thereof, appears at any time during the first three years after purchase, Garage Smart will repair or replace (at its option) the system or the defective component at no cost to you beyond the cost of shipping the defective item to us.

Who Makes This Warranty

This warranty is made by

Garage Smart

P.O. Box 50180

Provo, UT 84605

Who Is Covered

This warranty extends only to the original purchaser of the product. This warranty is intended for natural persons only and does not extend to any corporation, limited liability company, or commercial entity.

What Is Covered

The limited three-year warranty on hardware covers manufacturing defects and includes parts, labor, and the cost of shipping the repaired (or replacement) product from Garage Smart to you. The warranty does not cover installation of repaired or replacement items. If we send replacement parts, we may use new or reconditioned parts. If we send a replacement unit, we may use a new or reconditioned unit.

Where and How to Obtain Warranty Service

You can obtain warranty service from Garage Smart at the address indicated below. It is your responsibility to deliver or ship the defective product to us at your expense, together with a copy of your receipt showing date of purchase and a description of the claimed defect, prior to the expiration of the warranty period. To obtain information regarding this warranty, you may contact us by mail, e-mail, or phone.

Garage Smart

3000 S Vista Way

Provo, UT 84606

Support@GarageSmart.com

Exceptions and Exclusions

This warranty does not include damage or defects resulting from misuse, accident, failure to maintain, or any other causes following your purchase of the product.

Use of the Lifter system with any other system or components (including affixing non Garage Smart attachments or accessories) voids this warranty. Failure to follow the owner's manual in installation or use of the Lifter system voids the warranty. Unauthorized repair or modification voids the warranty.

The Lifter system is intended for personal, indoor, home use. Garage Smart does not warrant its lift system for commercial use, and any such use voids the warranty.

TO THE GREATEST EXTENT PERMITTED BY LAW, THIS WARRANTY IS IN LIEU OF AND EXCLUDES ALL OTHER WARRANTIES NOT EXPRESSLY SET FORTH HEREIN, WHETHER EXPRESS OR IMPLIED, INCLUDING BUT NOT LIMITED TO ANY WARRANTIES OF MERCHANTABILITY AND FITNESS FOR A PARTICULAR PURPOSE.

SCREW TEMPLATE

