



TEST REPORT

FCC PART 15.247

Report Reference No.: **CTL1802026041-WF**

Compiled by:
(position+printed name+signature)

Allen Wang
(File administrators)

Allen Wang

Tested by:
(position+printed name+signature)

Nice Nong
(Test Engineer)

NICE NONG

Approved by:
(position+printed name+signature)

Ivan Xie
(Manager)

Ivan Xie

Product Name.....: Wireless communication Zigbee module

Model/Type reference: WT5169P1-M3

List Model(s).....: WT5169P1-M2

Trade Mark.....: N/A

FCC ID.....: **2A0BN-WT5169P1**

Applicant's name: **Shenzhen Witstec Technology Co.,LTD**

Address of applicant: Room 202C, 2F., Building 9, Dong Yi Ind., Zhong Huan Rd.,
Shang Tang, Long Hua, Shenzhen, China

Test Firm: **Shenzhen CTL Testing Technology Co., Ltd.**

Address of Test Firm: Floor 1-A, Baisha Technology Park, No.3011, Shaheci Road,
Nanshan District, Shenzhen, China 518055

Test specification.....:

Standard.....: **FCC Part 15.247:** Operation within the bands 902-928 MHz,
2400-2483.5 MHz and 5725-5850 MHz.

TRF Originator: Shenzhen CTL Testing Technology Co., Ltd.

Master TRF: Dated 2011-01

Date of Receipt.....: Mar. 01, 2018

Date of Test Date.....: Mar. 01, 2018–Mar. 14, 2018

Data of Issue.....: Mar. 15, 2018

Result.....: Pass

Shenzhen CTL Testing Technology Co., Ltd. All rights reserved.

This publication may be reproduced in whole or in part for non-commercial purposes as long as the Shenzhen CTL Testing Technology Co., Ltd. is acknowledged as copyright owner and source of the material. Shenzhen CTL Testing Technology Co., Ltd. takes no responsibility for and will not assume liability for damages resulting from the reader's interpretation of the reproduced material due to its placement and context.

TEST REPORT

Test Report No. :	CTL1802026041-WF	Mar. 15, 2018
		Date of issue

Equipment under Test : Wireless communication Zigbee module

Model /Type : WT5169P1-M3

Listed Models : WT5169P1-M2

Applicant : **Shenzhen Witstec Technology Co.,LTD**

Address : Room 202C, 2F., Building 9, Dong Yi Ind., Zhong Huan Rd., Shang Tang, Long Hua, Shenzhen, China

Manufacturer : **Shenzhen Witstec Technology Co.,LTD**

Address : Room 202C, 2F., Building 9, Dong Yi Ind., Zhong Huan Rd., Shang Tang, Long Hua, Shenzhen, China

Test result	Pass *
--------------------	---------------

* In the configuration tested, the EUT complied with the standards specified page 5.

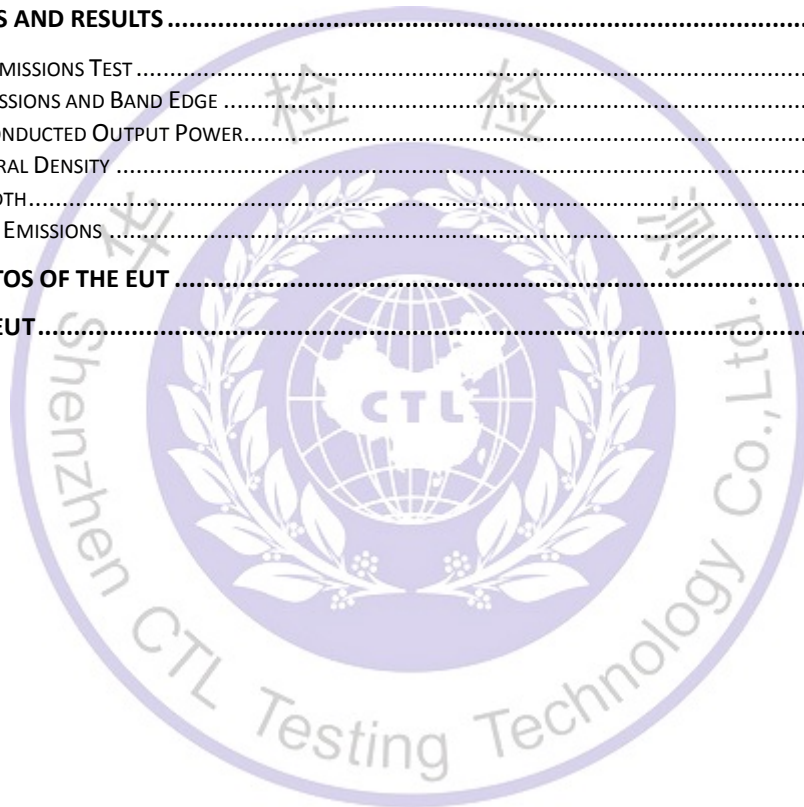
The test report merely corresponds to the test sample.

It is not permitted to copy extracts of these test result without the written permission of the test laboratory.

Table of Contents

Page

1. SUMMARY	5
1.1. TEST STANDARDS.....	5
1.2. TEST DESCRIPTION.....	5
1.3. TEST FACILITY.....	6
FCC-REGISTRATION NO.: 399832	6
1.4. STATEMENT OF THE MEASUREMENT UNCERTAINTY.....	6
2. GENERAL INFORMATION	7
2.1. ENVIRONMENTAL CONDITIONS	7
2.2. GENERAL DESCRIPTION OF EUT	7
2.3. DESCRIPTION OF TEST MODES AND TEST FREQUENCY.....	7
2.4. EQUIPMENTS USED DURING THE TEST	8
2.5. RELATED SUBMITTAL(S) / GRANT (S).....	8
2.6. MODIFICATIONS.....	8
3. TEST CONDITIONS AND RESULTS	9
3.1. CONDUCTED EMISSIONS TEST	9
3.2. RADIATED EMISSIONS AND BAND EDGE	12
3.3. MAXIMUM CONDUCTED OUTPUT POWER.....	19
3.4. POWER SPECTRAL DENSITY	20
3.5. 6DB BANDWIDTH.....	22
3.6. OUT-OF-BAND EMISSIONS	24
4. TEST SETUP PHOTOS OF THE EUT	28
5. PHOTOS OF THE EUT	29



1. SUMMARY

1.1. TEST STANDARDS

The tests were performed according to following standards:

[FCC Rules Part 15.247](#): Frequency Hopping, Direct Spread Spectrum and Hybrid Systems that are in operation within the bands of 902-928 MHz, 2400-2483.5 MHz, and 5725-5850 MHz

[ANSI C63.10: 2013](#): American National Standard for Testing Unlicensed Wireless Devices

[KDB558074 D01 V03r05](#): Guidance for Performing Compliance Measurements on Digital Transmission Systems (DTS) Operating Under §15.247

1.2. Test Description

FCC PART 15.247		
FCC Part 15.207	AC Power Conducted Emission	PASS
FCC Part 15.247(a)(2)	6dB Bandwidth	PASS
FCC Part 15.247(d)	Spurious RF Conducted Emission	PASS
FCC Part 15.247(b)	Maximum Conducted Output Power	PASS
FCC Part 15.247(e)	Power Spectral Density	PASS
FCC Part 15.109/ 15.205/ 15.209	Radiated Emissions	PASS
FCC Part 15.247(d)	Band Edge	PASS
FCC Part 15.203/15.247 (b)	Antenna Requirement	PASS

1.3. Test Facility

1.3.1 Address of the test laboratory

Shenzhen CTL Testing Technology Co., Ltd.

Floor 1-A, Baisha Technology Park, No. 3011, Shahexi Road, Nanshan, Shenzhen 518055 China

There is one 3m semi-anechoic chamber and two line conducted labs for final test. The Test Sites meet the requirements in documents ANSI C63.4 and CISPR 32/EN 55032 requirements.

1.3.2 Laboratory accreditation

The test facility is recognized, certified, or accredited by the following organizations:

IC Registration No.: 9618B

The 3m alternate test site of Shenzhen CTL Testing Technology Co., Ltd. EMC Laboratory has been registered by Certification and Engineer Bureau of Industry Canada for the performance of with Registration No.: 9618B on November 13, 2013.

FCC-Registration No.: 399832

Shenzhen CTL Testing Technology Co., Ltd. EMC Laboratory has been registered and fully described in a report filed with the (FCC) Federal Communications Commission. The acceptance letter from the FCC is maintained in our files. Registration 399832, December 08, 2017.

1.4. Statement of the measurement uncertainty

The data and results referenced in this document are true and accurate. The reader is cautioned that there may be errors within the calibration limits of the equipment and facilities. The measurement uncertainty was calculated for all measurements listed in this test report acc. to CISPR 16 - 4 "Specification for radio disturbance and immunity measuring apparatus and methods – Part 4: Uncertainty in EMC Measurements" and is documented in the Shenzhen CTL Testing Technology Co., Ltd. quality system acc. to DIN EN ISO/IEC 17025. Furthermore, component and process variability of devices similar to that tested may result in additional deviation. The manufacturer has the sole responsibility of continued compliance of the device.

Hereafter the best measurement capability for CTL laboratory is reported:

Test	Measurement Uncertainty	Notes
Transmitter power conducted	±0.57 dB	(1)
Transmitter power Radiated	±2.20 dB	(1)
Conducted spurious emission 9KHz-40 GHz	±2.20 dB	(1)
Occupied Bandwidth	±0.01ppm	(1)
Radiated Emission 30~1000MHz	±4.10dB	(1)
Radiated Emission Above 1GHz	±4.32dB	(1)
Conducted Disturbance0.15~30MHz	±3.20dB	(1)

- (1) This uncertainty represents an expanded uncertainty expressed at approximately the 95% confidence level using a coverage factor of k=2.

2. GENERAL INFORMATION

2.1. Environmental conditions

During the measurement the environmental conditions were within the listed ranges:

Normal Temperature:	25°C
Relative Humidity:	55 %
Air Pressure:	101 kPa

2.2. General Description of EUT

Product Name:	Wireless communication Zigbee module
Model/Type reference:	WT5169P1-M3, WT5169P1-M2
Power supply:	DC 3.3V from host device
Zigbee	
Frequency band:	2400 MHz to 2483.5 MHz
Operating frequency:	2405MHz to 2480 MHz
Modulation type:	OQPSK (DSSS)
Channel separation	5MHz
No. of Channel :	16

Antenna type:

Type	Antenna type	Gain
Type 1	Chip Antenna	2.50dBi
Type 2	Omni directional tube antenna	3.00dBi

Note: Both two types of antenna have been tested, only worse case of Omni directional tube antenna was reported.

2.3. Description of Test Modes and Test Frequency

The Applicant provides communication tools software to control the EUT for staying in continuous transmitting (Duty Cycle more than 98%) and receiving mode for testing.

There are 16 channels provided to the EUT of Zigbee and Channel 11/18/26 were selected for testing.

Operation Frequency Zigbee :

Channel	Frequency	Channel	Frequency
11	2405 MHz	19	2445 MHz
12	2410 MHz	20	2450 MHz
13	2415 MHz	21	2455 MHz
14	2420 MHz	22	2460 MHz
15	2425 MHz	23	2465 MHz
16	2430 MHz	24	2470 MHz
17	2435 MHz	25	2475 MHz
18	2440 MHz	26	2480 MHz

Note: The line display in grey were the channel selected for testing

2.4. Equipments Used during the Test

Test Equipment	Manufacturer	Model No.	Serial No.	Calibration Date	Calibration Due Date
LISN	R&S	ENV216	3560.6550.1 2	2017/06/02	2018/06/01
LISN	R&S	ESH2-Z5	860014/010	2017/06/02	2018/06/01
Bilog Antenna	Sunol Sciences Corp.	JB1	A061713	2017/06/02	2018/06/01
EMI Test Receiver	R&S	ESCI	103710	2017/06/02	2018/06/01
Spectrum Analyzer	Agilent	E4407B	MY41440676	2017/05/21	2018/05/20
Spectrum Analyzer	Agilent	N9020	US46220290	2018/01/16	2019/01/17
Power Meter	Anritsu	ML2487B	110553	2017/06/02	2018/06/01
Power Sensor	Anritsu	MA2411B	100345	2017/05/21	2018/05/20
Controller	EM Electronics	Controller EM 1000	N/A	2017/05/21	2018/05/20
Horn Antenna	Sunol Sciences Corp.	DRH-118	A062013	2017/05/19	2018/05/18
Active Loop Antenna	SCHWARZBECK	FMZB1519	1519-037	2017/05/19	2018/05/18
Amplifier	Agilent	8349B	3008A02306	2017/05/19	2018/05/18
Amplifier	Agilent	8447D	2944A10176	2017/05/19	2018/05/18
Temperature/Humidity Meter	Gangxing	CTH-608	02	2017/05/20	2018/05/19
High-Pass Filter	K&L	9SH10-2700/X1 2750-O/O	N/A	2017/05/20	2018/05/19
High-Pass Filter	K&L	41H10-1375/U1 2750-O/O	N/A	2017/05/20	2018/05/19
Coaxial Cables	HUBER+SUHNER	SUCOFLEX 104PEA-10M	10m	2017/06/02	2018/06/01
Coaxial Cables	HUBER+SUHNER	SUCOFLEX 104PEA-3M	3m	2017/06/02	2018/06/01
Coaxial Cables	HUBER+SUHNER	SUCOFLEX 104PEA-3M	3m	2017/06/02	2018/06/01
RF Cable	Megalon	RF-A303	N/A	2017/06/02	2018/06/01

The calibration interval was one year

2.5. Related Submittal(s) / Grant (s)

This submittal(s) (test report) is intended to comply with Section 15.247 of the FCC Part 15, Subpart C Rules.

2.6. Modifications

No modifications were implemented to meet testing criteria.

3. TEST CONDITIONS AND RESULTS

3.1. Conducted Emissions Test

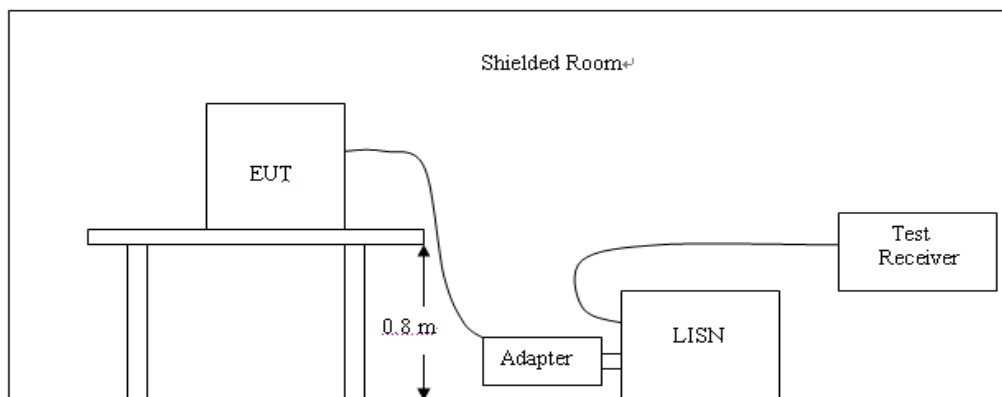
LIMIT

FCC CFR Title 47 Part 15 Subpart C Section 15.207

Frequency range (MHz)	Limit (dBuV)	
	Quasi-peak	Average
0.15-0.5	66 to 56*	56 to 46*
0.5-5	56	46
5-30	60	50

* Decreases with the logarithm of the frequency.

TEST CONFIGURATION



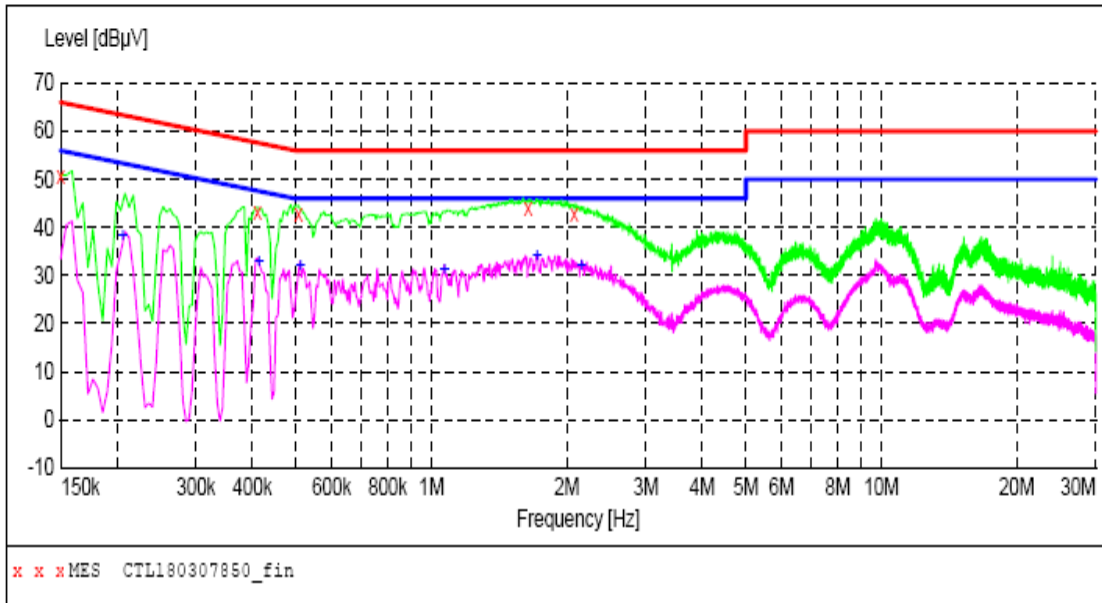
TEST PROCEDURE

1. The equipment was set up as per the test configuration to simulate typical actual usage per the user's manual. The EUT is a tabletop system; a wooden table with a height of 0.8 meters is used and is placed on the ground plane as per ANSI C63.10:2013.
2. Support equipment, if needed, was placed as per ANSI C63.10:2013.
3. All I/O cables were positioned to simulate typical actual usage as per ANSI C63.10:2013.
4. The adapter received AC120V/60Hz power through a Line Impedance Stabilization Network (LISN) which supplied power source and was grounded to the ground plane.
5. All support equipments received AC power from a second LISN, if any.
6. The EUT test program was started. Emissions were measured on each current carrying line of the EUT using a spectrum Analyzer / Receiver connected to the LISN powering the EUT. The LISN has two monitoring points: Line 1 (Hot Side) and Line 2 (Neutral Side). Two scans were taken: one with Line 1 connected to Analyzer / Receiver and Line 2 connected to a 50 ohm load; the second scan had Line 1 connected to a 50 ohm load and Line 2 connected to the Analyzer / Receiver.
7. Analyzer / Receiver scanned from 150 KHz to 30MHz for emissions in each of the test modes.
8. During the above scans, the emissions were maximized by cable manipulation.

TEST RESULTS

SCAN TABLE: "Voltage (9K-30M)FIN"

Short Description: 150K-30M Voltage



MEASUREMENT RESULT: "CTL180307850_fin"

3/7/2018 3:36PM

Frequency MHz	Level dBuV	Transd dB	Limit dBuV	Margin dB	Detector	Line	PE
0.150000	50.60	10.2	66	15.4	QP	L1	GND
0.410000	43.00	10.2	58	14.6	QP	L1	GND
0.506000	42.80	10.2	56	13.2	QP	L1	GND
1.640000	44.00	10.3	56	12.0	QP	L1	GND
2.078000	42.60	10.4	56	13.4	QP	L1	GND

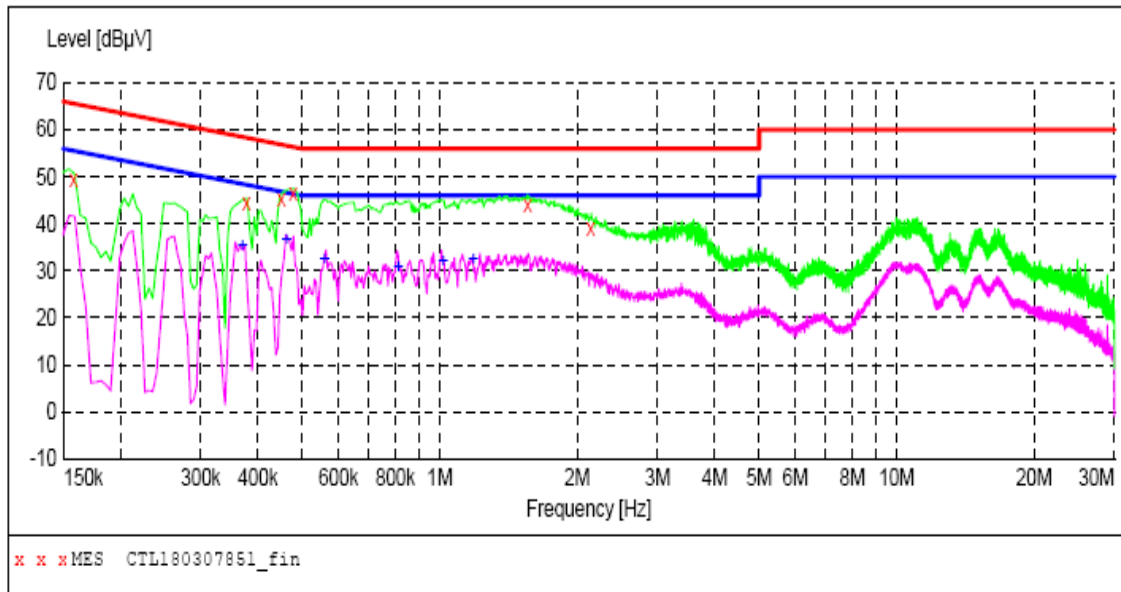
MEASUREMENT RESULT: "CTL180307850_fin2"

3/7/2018 3:36PM

Frequency MHz	Level dBuV	Transd dB	Limit dBuV	Margin dB	Detector	Line	PE
0.206000	38.20	10.2	53	15.2	AV	L1	GND
0.414000	32.70	10.2	48	14.9	AV	L1	GND
0.512000	32.00	10.2	46	14.0	AV	L1	GND
1.070000	31.30	10.3	46	14.7	AV	L1	GND
1.718000	33.90	10.3	46	12.1	AV	L1	GND
2.156000	32.10	10.4	46	13.9	AV	L1	GND

SCAN TABLE: "Voltage (9K-30M) FIN"

Short Description: 150K-30M Voltage



MEASUREMENT RESULT: "CTL180307851_fin"

3/7/2018 3:41PM

Frequency MHz	Level dBµV	Transd dB	Limit dBµV	Margin dB	Detector	Line	PE
0.158000	49.50	10.2	66	16.1	QP	N	GND
0.378000	44.60	10.2	58	13.7	QP	N	GND
0.450000	45.10	10.2	57	11.8	QP	N	GND
0.478000	46.50	10.2	56	9.9	QP	N	GND
1.556000	43.90	10.3	56	12.1	QP	N	GND
2.138000	39.00	10.4	56	17.0	QP	N	GND

MEASUREMENT RESULT: "CTL180307851_fin2"

3/7/2018 3:41PM

Frequency MHz	Level dBµV	Transd dB	Limit dBµV	Margin dB	Detector	Line	PE
0.370000	35.10	10.2	49	13.4	AV	N	GND
0.462000	36.40	10.2	47	10.3	AV	N	GND
0.560000	32.50	10.2	46	13.5	AV	N	GND
0.812000	30.70	10.2	46	15.3	AV	N	GND
1.016000	32.10	10.3	46	13.9	AV	N	GND
1.184000	32.50	10.3	46	13.5	AV	N	GND

3.2. Radiated Emissions and Band Edge

Limit

For intentional device, according to § 15.209(a), the general requirement of field strength of radiated emission out of authorized band shall not exceed the following table at a 3 meters measurement distance.

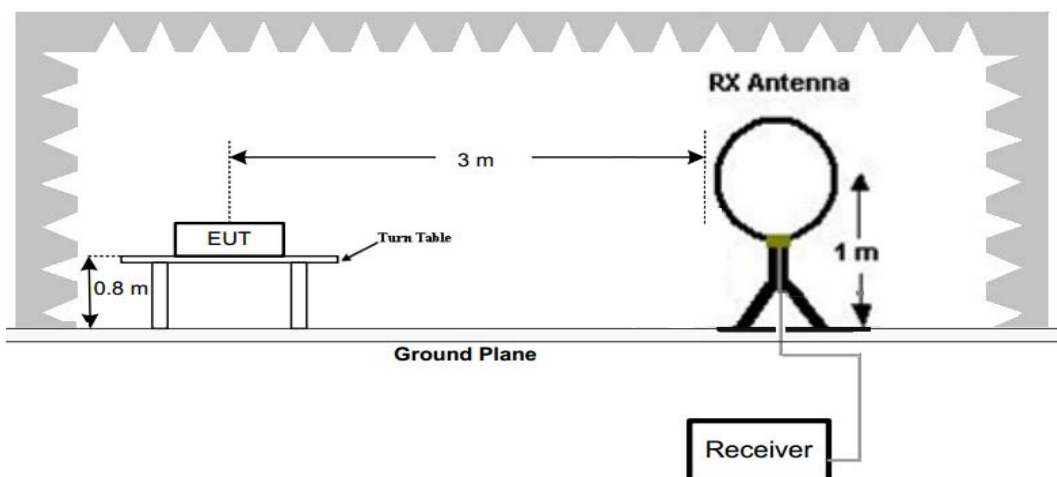
In addition, radiated emissions which fall in the restricted bands, as defined in §15.205(a), must also comply with the radiated emission limits specified in §15.209(a)

Radiated emission limits

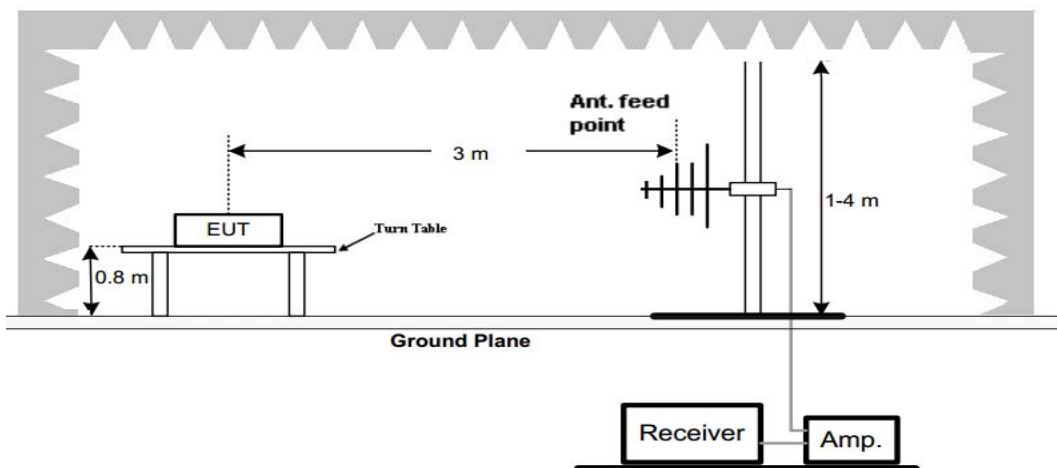
Frequency (MHz)	Distance (Meters)	Radiated (dBµV/m)	Radiated (µV/m)
0.009-0.49	3	$20\log(2400/F(\text{KHz}))+40\log(300/3)$	$2400/F(\text{KHz})$
0.49-1.705	3	$20\log(24000/F(\text{KHz}))+40\log(30/3)$	$24000/F(\text{KHz})$
1.705-30	3	$20\log(30)+40\log(30/3)$	30
30-88	3	40.0	100
88-216	3	43.5	150
216-960	3	46.0	200
Above 960	3	54.0	500

TEST CONFIGURATION

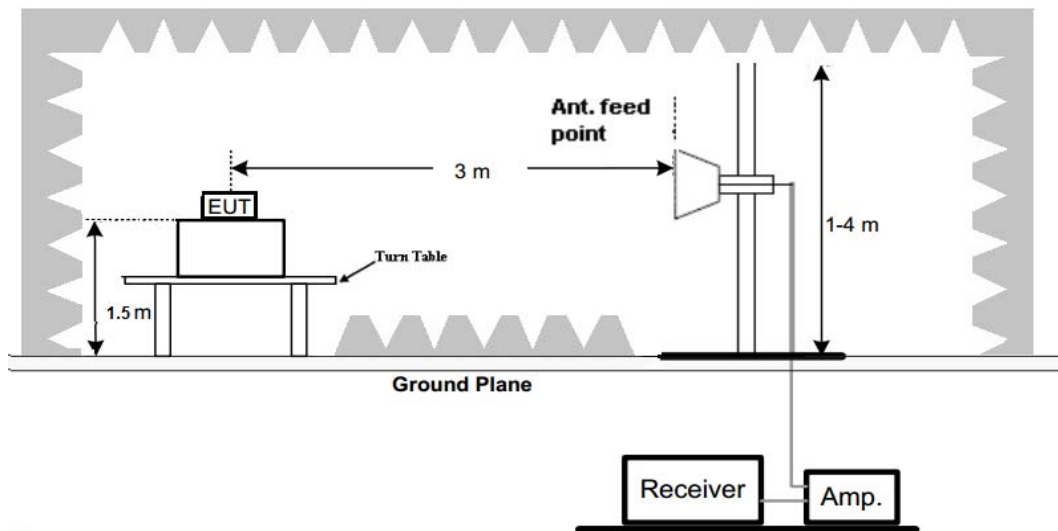
(A) Radiated Emission Test Set-Up, Frequency Below 30MHz



(B) Radiated Emission Test Set-Up, Frequency below 1000MHz



(C) Radiated Emission Test Set-Up, Frequency above 1000MHz



Test Procedure

1. Below 1GHz measurement the EUT is placed on a turntable which is 0.8m above ground plane, and above 1GHz measurement EUT was placed on a low permittivity and low loss tangent turn table which is 1.5m above ground plane.
2. Maximum procedure was performed by raising the receiving antenna from 1m to 4m and rotating the turn table from 0° to 360° to acquire the highest emissions from EUT
3. And also, each emission was to be maximized by changing the polarization of receiving antenna both horizontal and vertical.
4. Repeat above procedures until all frequency measurements have been completed.

TEST RESULTS

Remark:

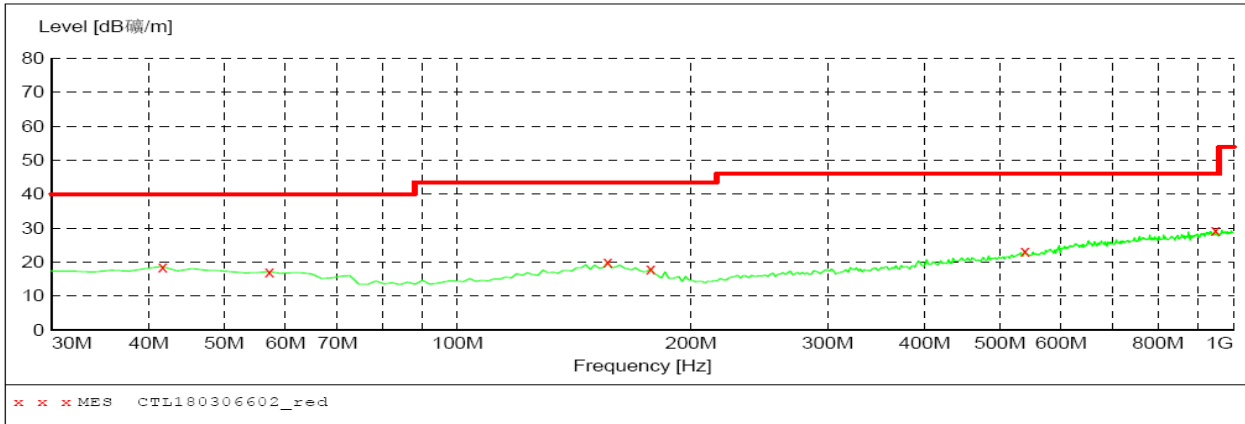
1. For below 1GHz testing recorded worst at high channel.
2. Radiated emission test from 9 KHz to 10th harmonic of fundamental was verified, and no emission found except system noise floor in 9 KHz to 30MHz and not recorded in this report.

For 30MHz-1GHz

Horizontal

SWEEP TABLE: "test (30M-1G)"

Short Description:		Field Strength			
Start	Stop	Detector	Meas. Time	IF Bandw.	Transducer
30.0 MHz	1.0 GHz	MaxPeak	300.0 ms	100 kHz	VULB 9168



MEASUREMENT RESULT: "CTL180306602_red"

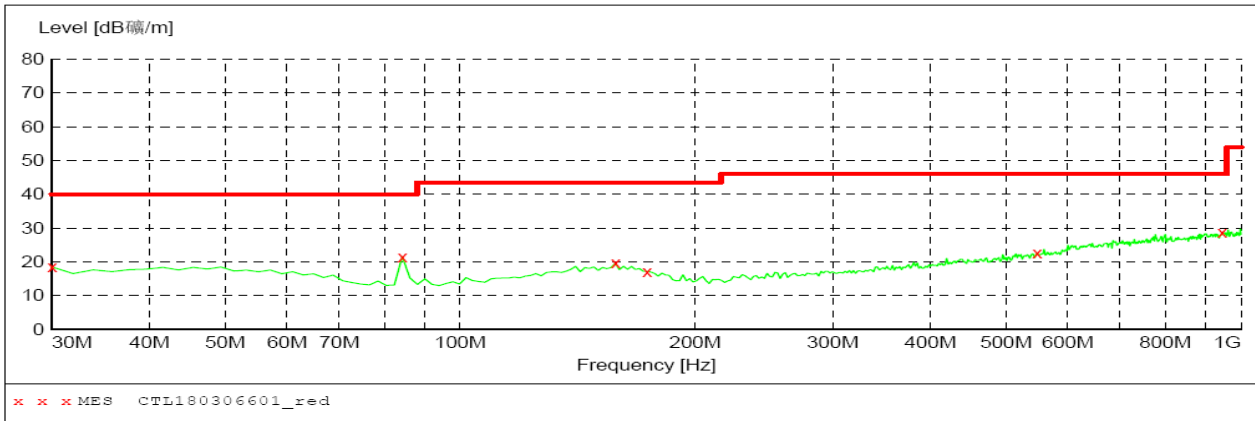
2018-3-6 10:23

Frequency MHz	Level dB磁/m	Transd dB	Limit dB磁/m	Margin dB	Det.	Height cm	Azimuth deg	Polarization
41.640000	18.70	14.7	40.0	21.3	---	0.0	0.00	HORIZONTAL
57.160000	17.20	13.6	40.0	22.8	---	0.0	0.00	HORIZONTAL
156.100000	20.00	15.3	43.5	23.5	---	0.0	0.00	HORIZONTAL
177.440000	18.00	13.2	43.5	25.5	---	0.0	0.00	HORIZONTAL
538.280000	23.30	19.2	46.0	22.7	---	0.0	0.00	HORIZONTAL
947.620000	29.20	24.8	46.0	16.8	---	0.0	0.00	HORIZONTAL

Vertical

SWEEP TABLE: "test (30M-1G)"

Short Description:		Field Strength			
Start	Stop	Detector	Meas. Time	IF Bandw.	Transducer
30.0 MHz	1.0 GHz	MaxPeak	300.0 ms	100 kHz	VULB 9168



MEASUREMENT RESULT: "CTL180306601_red"

2018-3-6 10:20

Frequency MHz	Level dB磁/m	Transd dB	Limit dB磁/m	Margin dB	Det.	Height cm	Azimuth deg	Polarization
30.000000	18.50	13.8	40.0	21.5	---	0.0	0.00	VERTICAL
84.320000	21.60	10.2	40.0	18.4	---	0.0	0.00	VERTICAL
158.040000	19.60	15.3	43.5	23.9	---	0.0	0.00	VERTICAL
173.560000	17.20	13.8	43.5	26.3	---	0.0	0.00	VERTICAL
547.980000	22.60	19.4	46.0	23.4	---	0.0	0.00	VERTICAL
945.680000	28.80	24.8	46.0	17.2	---	0.0	0.00	VERTICAL

For 1GHz to 25GHz

Frequency(MHz):			2405		Polarity:			HORIZONTAL	
Frequency (MHz)	Emission Level (dBuV/m)		Limit (dBuV/m)	Margin (dB)	Raw Value (dBuV)	Antenna Factor (dB/m)	Cable Factor (dB)	Pre-amplifier (dB)	Correction Factor (dB/m)
4810.00	59.45	PK	74	14.55	54.92	33.50	6.92	35.89	4.53
4810.00	50.37	AV	54	3.63	45.84	33.50	6.92	35.89	4.53
5135.50	48.56	PK	74	25.44	41.33	34.40	7.11	34.28	7.23
5135.50	--	AV	54	--	--	--	--	--	--
7215.00	51.65	PK	74	22.35	40.49	36.99	9.19	35.02	11.16
7215.00	--	AV	54	--	--	--	--	--	--

Frequency(MHz):			2405		Polarity:			VERTICAL	
Frequency (MHz)	Emission Level (dBuV/m)		Limit (dBuV/m)	Margin (dB)	Raw Value (dBuV)	Antenna Factor (dB/m)	Cable Factor (dB)	Pre-amplifier (dB)	Correction Factor (dB/m)
4810.00	60.36	PK	74	13.64	55.83	33.50	6.92	35.89	4.53
4810.00	50.99	AV	54	3.01	46.46	33.50	6.92	35.89	4.53
5135.50	49.54	PK	74	24.46	42.31	34.40	7.11	34.28	7.23
5135.50	--	AV	54	--	--	--	--	--	--
7215.00	51.78	PK	74	22.22	40.62	36.99	9.19	35.02	11.16
7215.00	--	AV	54	--	--	--	--	--	--

Frequency(MHz):			2440		Polarity:			HORIZONTAL	
Frequency (MHz)	Emission Level (dBuV/m)		Limit (dBuV/m)	Margin (dB)	Raw Value (dBuV)	Antenna Factor (dB/m)	Cable Factor (dB)	Pre-amplifier (dB)	Correction Factor (dB/m)
4880.00	61.58	PK	74	12.42	56.93	33.60	6.95	35.90	4.65
4880.00	51.87	AV	54	2.13	47.22	33.60	6.95	35.90	4.65
5211.75	48.64	PK	74	25.36	41.25	34.55	7.15	34.31	7.39
5211.75	--	AV	54	--	--	--	--	--	--
7320.00	50.89	PK	74	23.11	39.20	37.46	9.23	35.00	11.69
7320.00	--	AV	54	--	--	--	--	--	--

Frequency(MHz):			2440		Polarity:			VERTICAL	
Frequency (MHz)	Emission Level (dBuV/m)		Limit (dBuV/m)	Margin (dB)	Raw Value (dBuV)	Antenna Factor (dB/m)	Cable Factor (dB)	Pre-amplifier (dB)	Correction Factor (dB/m)
4880.00	61.87	PK	74	12.13	57.22	33.60	6.95	35.90	4.65
4880.00	52.95	AV	54	1.05	48.30	33.60	6.95	35.90	4.65
5211.75	47.66	PK	74	26.34	40.27	34.55	7.15	34.31	7.39
5211.75	--	AV	54	--	--	--	--	--	--
7320.00	51.34	PK	74	22.66	39.65	37.46	9.23	35.00	11.69
7320.00	--	AV	54	--	--	--	--	--	--

Frequency(MHz):			2480		Polarity:			HORIZONTAL	
Frequency (MHz)	Emission Level (dBuV/m)		Limit (dBuV/m)	Margin (dB)	Raw Value (dBuV)	Antenna Factor (dB/m)	Cable Factor (dB)	Pre-amplifier (dB)	Correction Factor (dB/m)
4960.00	62.77	PK	74	11.23	57.85	33.84	7.00	35.92	4.92
4960.00	52.49	AV	54	1.51	47.57	33.84	7.00	35.92	4.92
5250.75	48.32	PK	74	25.68	40.88	34.59	7.17	34.32	7.44
5250.75	--	AV	54	--	--	--	--	--	--
7440.00	50.68	PK	74	23.32	38.73	37.64	9.28	34.97	11.95
7440.00	--	AV	54	--	--	--	--	--	--

Frequency(MHz):			2480		Polarity:			VERTICAL	
Frequency (MHz)	Emission Level (dBuV/m)		Limit (dBuV/m)	Margin (dB)	Raw Value (dBuV)	Antenna Factor (dB/m)	Cable Factor (dB)	Pre-amplifier (dB)	Correction Factor (dB/m)
4960.00	62.89	PK	74	11.11	57.97	33.84	7.00	35.92	4.92
4960.00	52.51	AV	54	1.49	47.59	33.84	7.00	35.92	4.92
5250.75	49.22	PK	74	24.78	41.78	34.59	7.17	34.32	7.44
5250.75	--	AV	54	--	--	--	--	--	--
7440.00	50.79	PK	74	23.21	38.84	37.64	9.28	34.97	11.95
7440.00	--	AV	54	--	--	--	--	--	--

REMARKS:

1. Emission level (dBuV/m) =Raw Value (dBuV)+Correction Factor (dB/m)
2. Correction Factor (dB/m) = Antenna Factor (dB/m)+Cable Factor (dB)-Pre-amplifier Factor
3. Margin value = Limit value- Emission level.
4. -- Mean the PK detector measured value is below average limit.
5. The other emission levels were very low against the limit.
6. RBW1MHz VBW3MHz Peak detector is for PK value; RBW 1MHz VBW10Hz Peak detector is for AV value.

Results of Band Edges Test (Radiated)

Frequency(MHz):			2405		Polarity:			HORIZONTAL	
Frequency (MHz)	Emission Level (dBuV/m)		Limit (dBuV/m)	Margin (dB)	Raw Value (dBuV)	Antenna Factor (dB/m)	Cable Factor (dB)	Pre-amplifier (dB)	Correction Factor (dB/m)
2405.00	98.74	PK	--	--	65.34	28.79	4.62	0.00	33.40
2405.00	91.26	AV	--	--	57.86	28.79	4.62	0.00	33.40
2357.75	45.87	PK	74	28.13	12.79	28.52	4.56	0.00	33.08
2357.75	--	AV	54	--	--	--	--	--	--
2390.00	50.50	PK	74	23.50	17.18	28.72	4.60	0.00	33.32
2390.00	--	AV	54	--	--	--	--	--	--
2400.00	56.52	PK	74	17.48	23.13	28.78	4.61	0.00	33.39
2400.00	47.67	AV	54	6.33	14.28	28.78	4.61	0.00	33.39

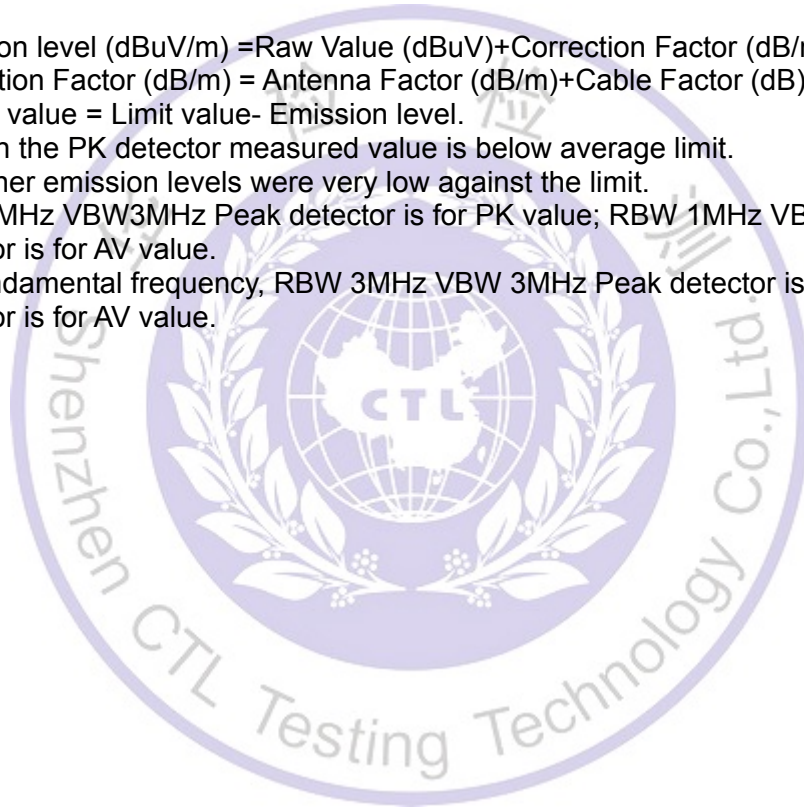
Frequency(MHz):			2405		Polarity:			VERTICAL	
Frequency (MHz)	Emission Level (dBuV/m)		Limit (dBuV/m)	Margin (dB)	Raw Value (dBuV)	Antenna Factor (dB/m)	Cable Factor (dB)	Pre-amplifier (dB)	Correction Factor (dB/m)
2405.00	98.87	PK	--	--	65.47	28.79	4.62	0.00	33.40
2405.00	91.59	AV	--	--	58.19	28.79	4.62	0.00	33.40
2357.75	45.12	PK	74	28.88	12.04	28.52	4.56	0.00	33.08
2357.75	--	AV	54	--	--	--	--	--	--
2390.00	50.68	PK	74	23.32	17.36	28.72	4.60	0.00	33.32
2390.00	--	AV	54	--	--	--	--	--	--
2400.00	56.79	PK	74	17.21	23.40	28.78	4.61	0.00	33.39
2400.00	48.02	AV	54	5.98	14.63	28.78	4.61	0.00	33.39

Frequency(MHz):			2480		Polarity:			HORIZONTAL	
Frequency (MHz)	Emission Level (dBuV/m)		Limit (dBuV/m)	Margin (dB)	Raw Value (dBuV)	Antenna Factor (dB/m)	Cable Factor (dB)	Pre-amplifier (dB)	Correction Factor (dB/m)
2480.00	100.25	PK	--	--	66.63	28.92	4.70	0.00	33.62
2480.00	92.87	AV	--	--	59.25	28.92	4.70	0.00	33.62
2483.50	58.25	PK	74	15.75	24.62	28.93	4.70	0.00	33.63
2483.50	49.87	AV	54	4.13	16.24	28.93	4.70	0.00	33.63
2485.75	55.68	PK	74	18.32	22.04	28.93	4.70	0.00	33.64
2485.75	46.58	AV	54	7.42	12.94	28.93	4.70	0.00	33.64
2500.00	46.39	PK	74	27.61	12.71	28.96	4.72	0.00	33.68
2500.00	--	AV	54	--	--	--	--	--	--

Frequency(MHz):			2480		Polarity:			VERTICAL	
Frequency (MHz)	Emission Level (dBuV/m)		Limit (dBuV/m)	Margin (dB)	Raw Value (dBuV)	Antenna Factor (dB/m)	Cable Factor (dB)	Pre-amplifier (dB)	Correction Factor (dB/m)
2480.00	101.58	PK	--	--	67.96	28.92	4.70	0.00	33.62
2480.00	92.97	AV	--	--	59.35	28.92	4.70	0.00	33.62
2483.50	59.36	PK	74	14.64	25.73	28.93	4.70	0.00	33.63
2483.50	50.32	AV	54	3.68	16.69	28.93	4.70	0.00	33.63
2485.75	56.78	PK	74	17.22	23.14	28.93	4.70	0.00	33.64
2485.75	48.21	AV	54	5.79	14.57	28.93	4.70	0.00	33.64
2500.00	46.94	PK	74	27.06	13.26	28.96	4.72	0.00	33.68
2500.00	--	AV	54	--	--	--	--	--	--

REMARKS:

1. Emission level (dBuV/m) =Raw Value (dBuV)+Correction Factor (dB/m)
2. Correction Factor (dB/m) = Antenna Factor (dB/m)+Cable Factor (dB)-Pre-amplifier Factor
3. Margin value = Limit value- Emission level.
4. -- Mean the PK detector measured value is below average limit.
5. The other emission levels were very low against the limit.
6. RBW1MHz VBW3MHz Peak detector is for PK value; RBW 1MHz VBW10Hz Peak detector is for AV value.
7. For fundamental frequency, RBW 3MHz VBW 3MHz Peak detector is for PK Value; RMS detector is for AV value.



3.3. Maximum Conducted Output Power

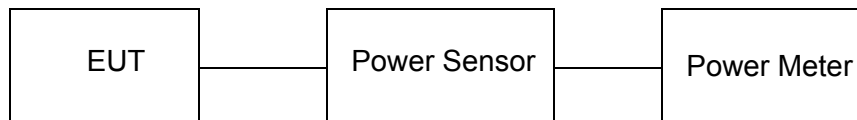
Limit

The Maximum Peak Output Power Measurement is 30dBm.

Test Procedure

Remove the antenna from the EUT and then connect a low loss RF cable from the antenna port to the power sensor.

Test Configuration



Test Results

Type	Channel	Output power (dBm)	Limit (dBm)	Result
OQPSK	11	14.747	30.00	Pass
	18	16.526		
	26	18.281		

Note: 1.The test results including the cable lose.

3.4. Power Spectral Density

Limit

For digitally modulated systems, the power spectral density conducted from the intentional radiator to the antenna shall not be greater than 8 dBm in any 3 kHz band during any time interval of continuous transmission.

Test Procedure

1. Use this procedure when the maximum peak conducted output power in the fundamental emission is used to demonstrate compliance.
2. Set the RBW \geq 3 kHz.
3. Set the VBW \geq 3 \times RBW.
4. Set the span to 1.5 times the DTS channel bandwidth.
5. Detector = peak.
6. Sweep time = auto couple.
7. Trace mode = max hold.
8. Allow trace to fully stabilize.
9. Use the peak marker function to determine the maximum power level.
10. If measured value exceeds limit, reduce RBW (no less than 3 kHz) and repeat.
11. The resulting peak PSD level must be 8dBm.

Test Configuration

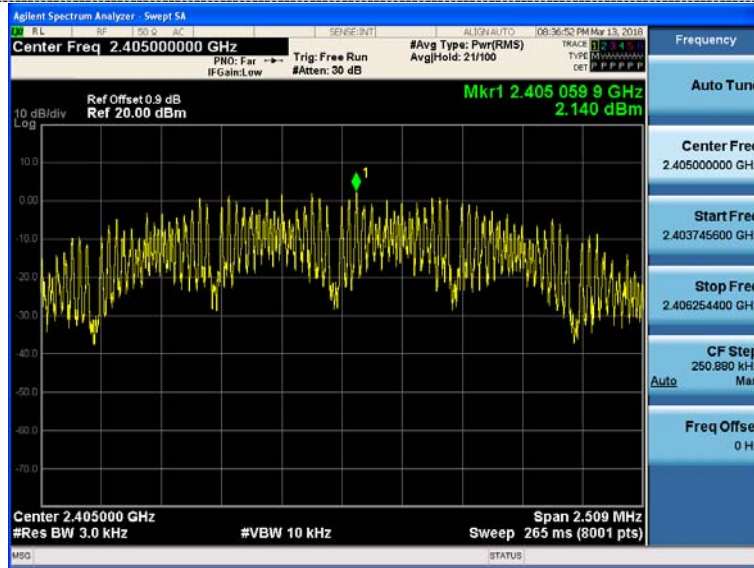


Test Results

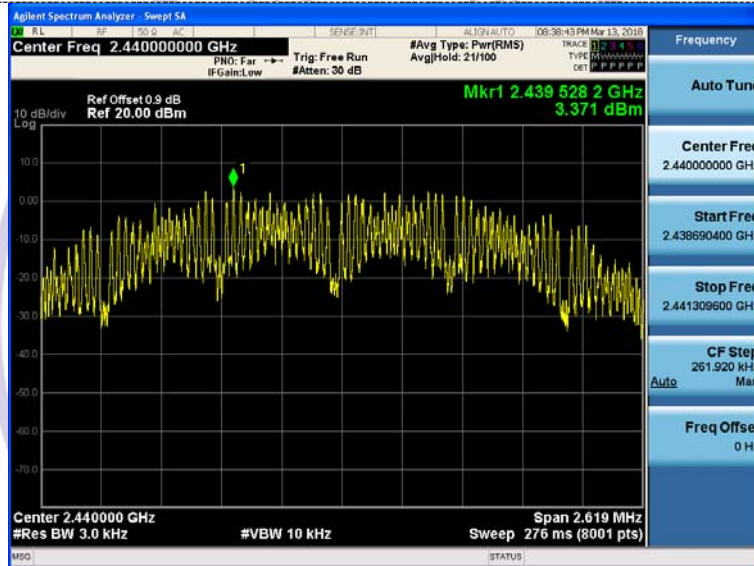
Type	Channel	Power Spectral Density (dBm/3KHz)	Limit (dBm/3KHz)	Result
OQPSK	11	2.140	8.00	Pass
	18	3.371		
	26	5.524		

Test plot as follows:

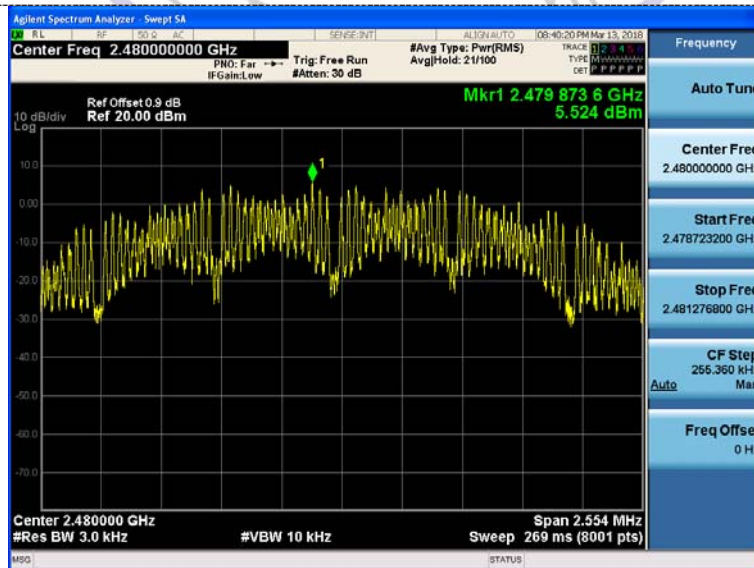
OQPSK



CH11



CH18



CH26

3.5. 6dB Bandwidth

Limit

For digital modulation systems, the minimum 6 dB bandwidth shall be at least 500 kHz

Test Procedure

The transmitter output was connected to the spectrum analyzer through an attenuator. The bandwidth of the fundamental frequency was measured by spectrum analyzer with 100 KHz RBW and 300 KHz VBW. The 6dB bandwidth is defined as the total spectrum the power of which is higher than peak power minus 6dB.

Test Configuration

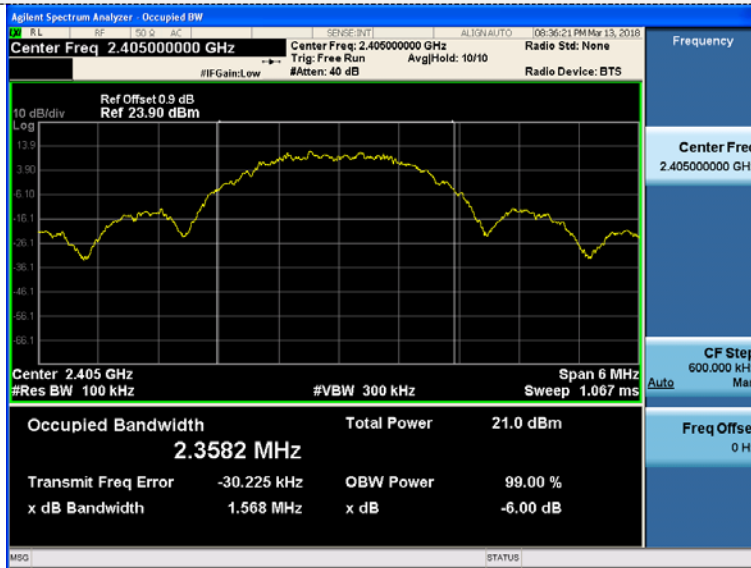


Test Results

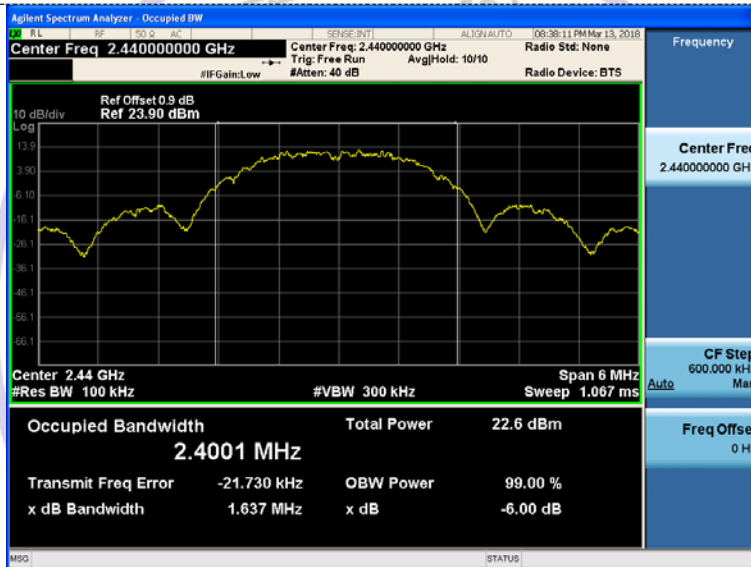
Type	Channel	6dB Bandwidth (MHz)	99% OBW (MHz)	Limit (KHz)	Result
OQPSK	11	1.568	2.3582	≥500	Pass
	18	1.637	2.4001		
	26	1.596	2.3964		

Test plot as follows:

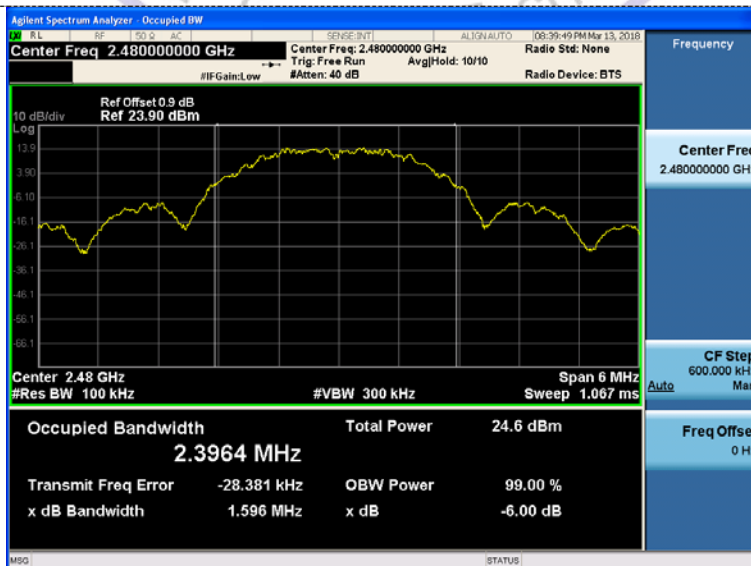
QPSK



CH11



CH18



CH26

3.6. Out-of-band Emissions

Limit

In any 100 kHz bandwidth outside the frequency band in which the spread spectrum or digitally modulated intentional radiator is operating, the radio frequency power that is produced by the intentional radiator shall be at least 20 dB below that in the 100 kHz bandwidth within the band that contains the highest level of the desired power, based on either an RF conducted or a radiated measurement, provided the transmitter demonstrates compliance with the peak conducted power limits. If the transmitter complies with the conducted power limits based on the use of RMS averaging over a time interval, as permitted under paragraph (b)(3) of this section, the attenuation required under this paragraph shall be 30 dB instead of 20 dB. Attenuation below the general limits specified in §15.209(a) is not required.

Test Procedure

Connect the transmitter output to spectrum analyzer using a low loss RF cable, and set the spectrum analyzer to RBW=100 kHz, VBW= 300 kHz, peak detector, and max hold. Measurements utilizing these settings are made of the in-band reference level, band-edge and out-of-band emissions.

Test Configuration



Test Results

Remark: The measurement frequency range is from 30MHz to the 10th harmonic of the fundamental frequency. The lowest, middle and highest channels are tested to verify the spurious emissions and band-edge measurement data.

Test plot as follows:

CH11

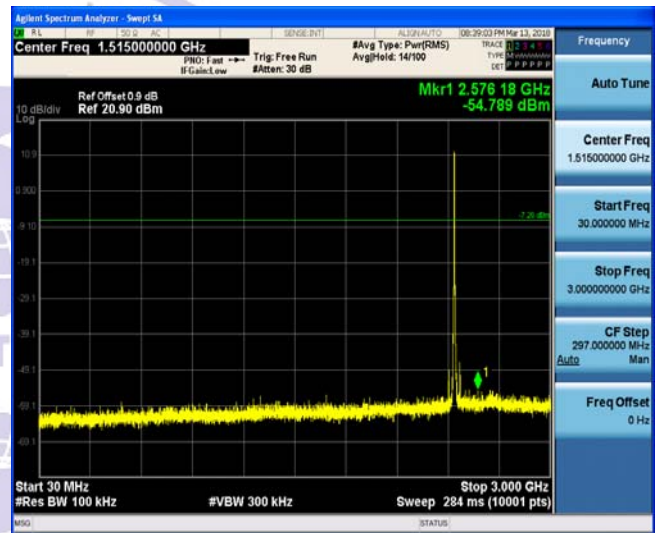
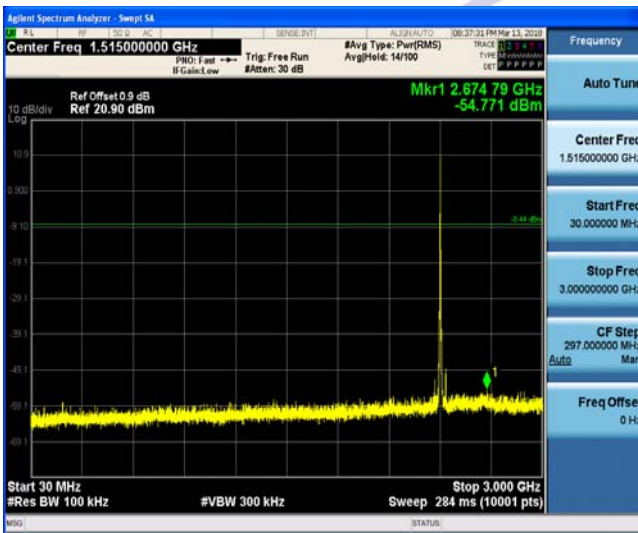


CH18



Reference

Reference



30MHz-3GHz

30MHz-3GHz



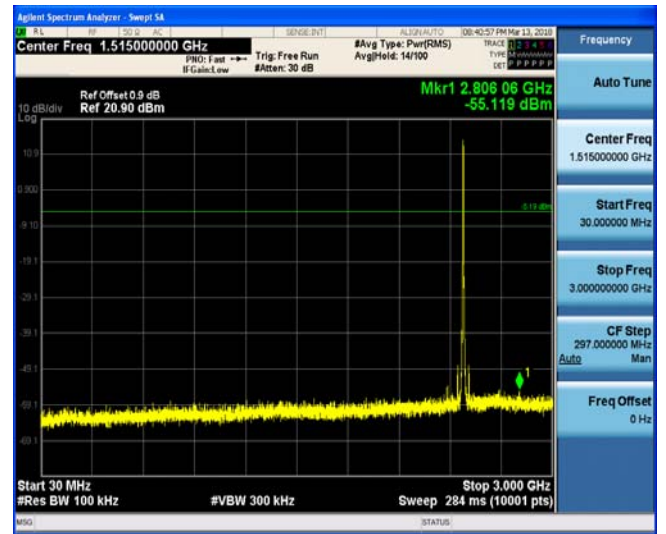
3GHz-25GHz

3GHz-25GHz

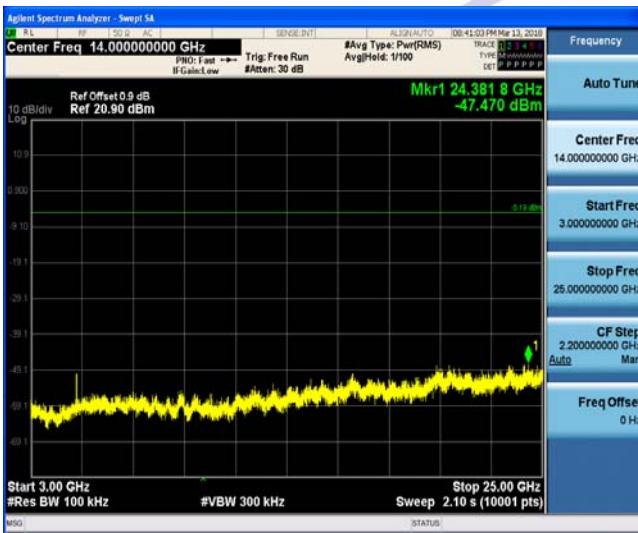
CH26



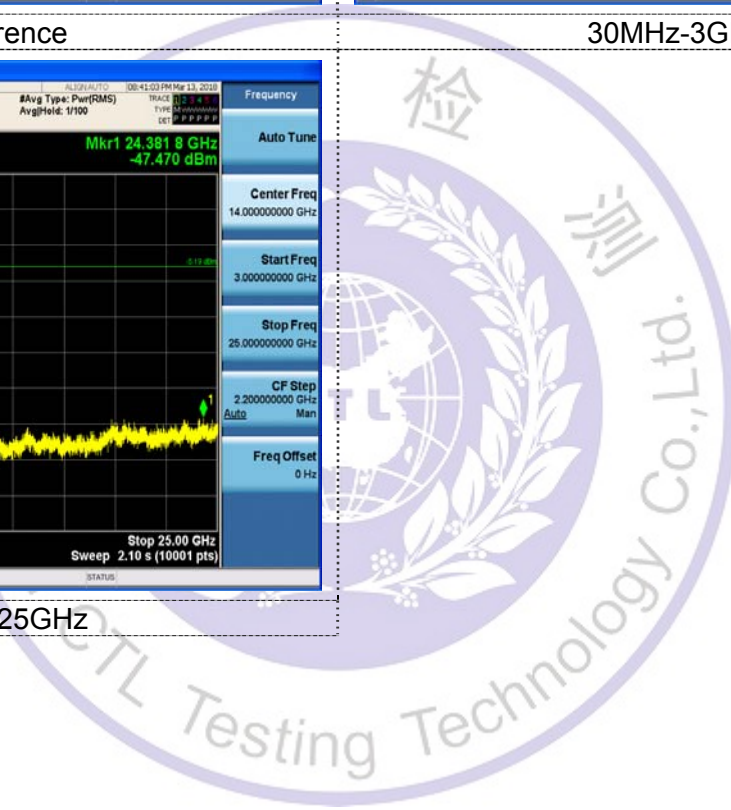
Reference



30MHz-3GHz

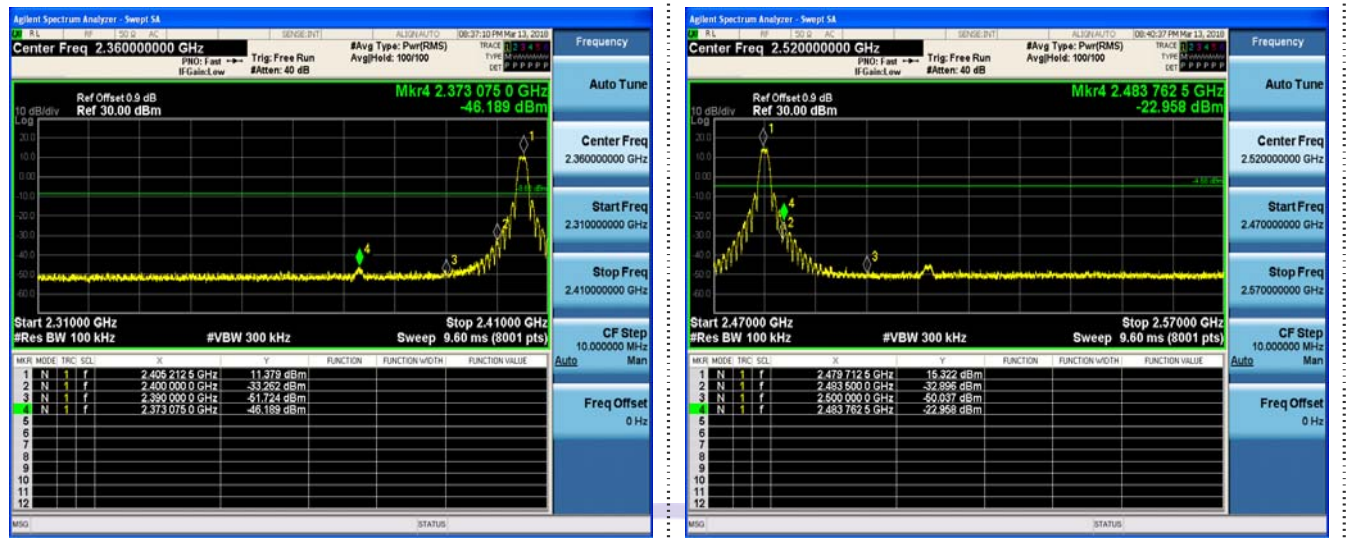


3GHz-25GHz



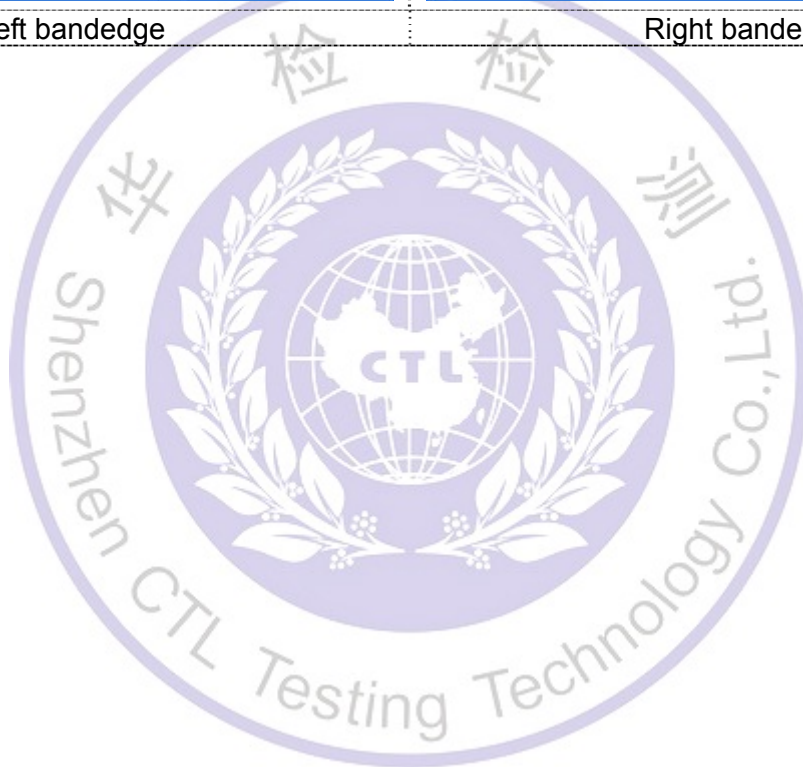
Band-edge Measurements for RF Conducted Emissions:

OQPSK



Left bandedge

Right bandedge

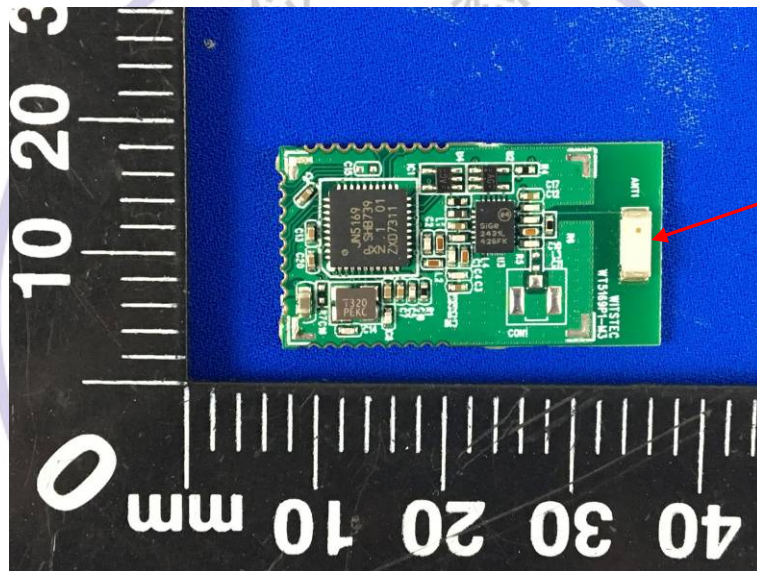
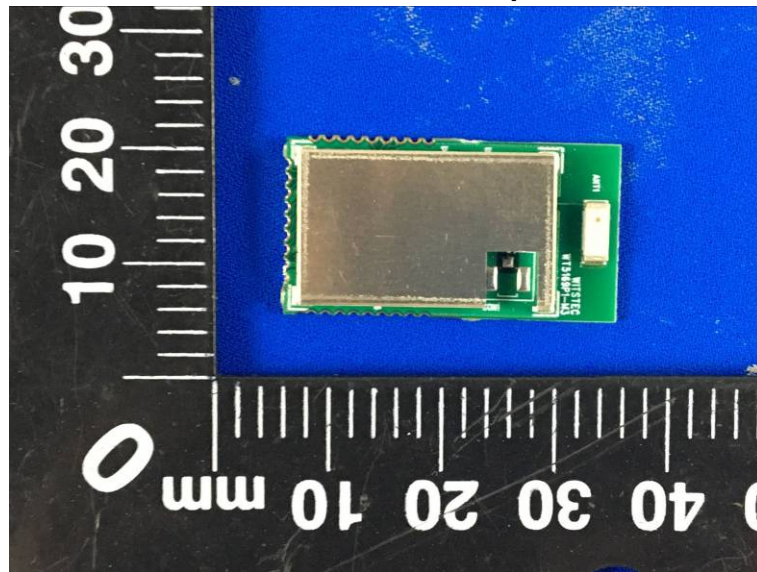


4. Test Setup Photos of the EUT

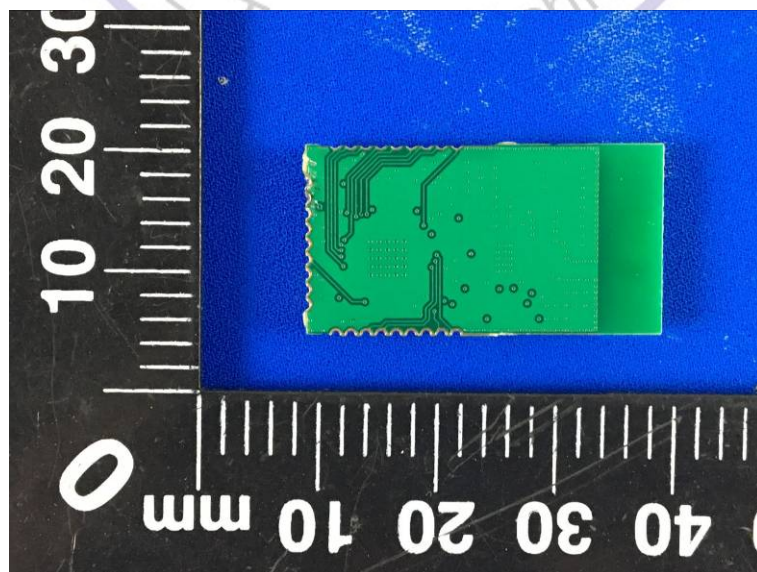


5. PHOTOS OF THE EUT

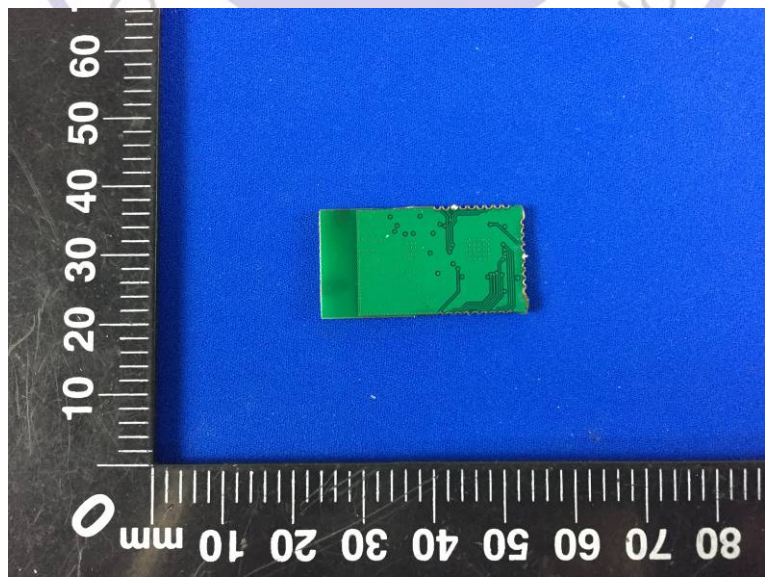
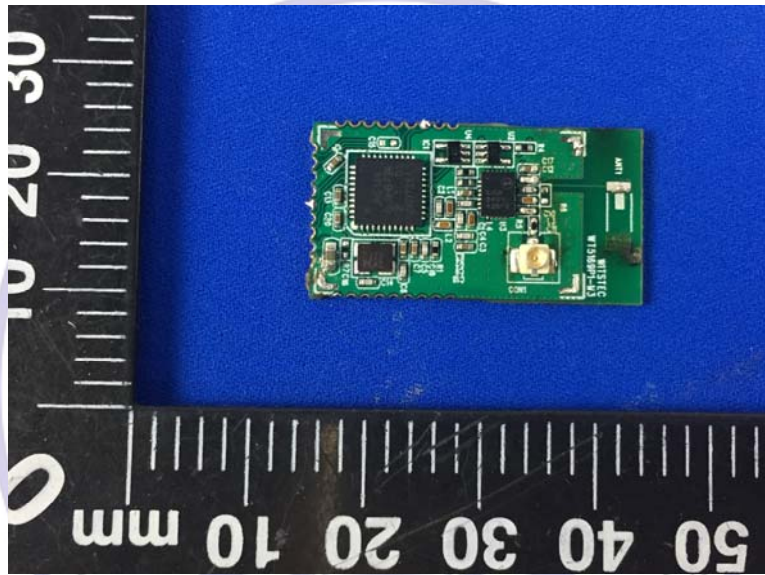
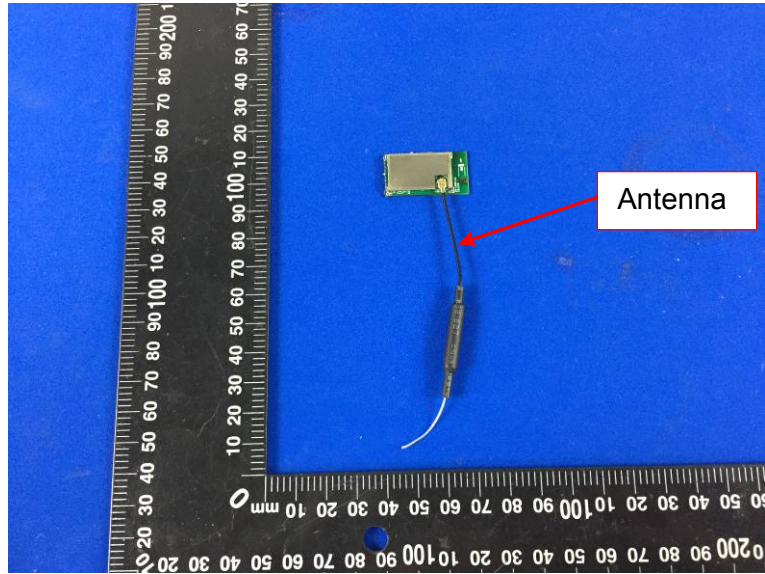
WT5169P1-M2 EUT with Chip antenna



Antenna



WT5169P1-M3 EUT with Omni directional tube antenna



***** End of Report *****