

SmartCube

Model no.: SQ0001

TRAQ appreciates your purchase of TRAQ shoes 、 Q-Chip 、 TRAQ App and related accessories. The Q-Chip, SQ0001, is embedded in the shoes, and we need to advise you, however, of some legal limitations, restrictions, and warnings that apply to the use of our products. We ask that you respect the rules described below.

### **GENERAL DISCLAIMER**

**THE PRODUCTS AND SERVICES PROVIDED BY TRAQ ARE ON AN “AS IS” BASIS, AND TRAQ EXPRESSLY DISCLAIMS ANY AND ALL WARRANTIES, EXPRESS OR IMPLIED, INCLUDING WITHOUT LIMITATION WARRANTIES OF MERCHANTABILITY AND FITNESS FOR A PARTICULAR PURPOSE, WITH RESPECT TO ANY PRODUCT OR SERVICE.**

THE CUSTOMER'S EXCLUSIVE REMEDY FOR BREACH OF ANY EXPRESS OR IMPLIED WARRANTY OR OF ANY OTHER OBLIGATION ARISING BY OPERATION OF LAW OR OTHERWISE SHALL BE LIMITED AS SPECIFIED HEREIN TO REPAIR OR REPLACEMENT, AT OUR SOLE OPTION. IN NO EVENT SHALL TRAQ BE LIABLE FOR ANY DIRECT, INDIRECT, INCIDENTAL, PUNITIVE, OR CONSEQUENTIAL DAMAGES OF ANY KIND WHATSOEVER WITH RESPECT TO THE PRODUCT OR SERVICE.

### **WARNINGS**

- This device is not intended for use as a medical monitor.
- Check reception regularly. Test signal, battery, and volume of alarm before use. Always make sure that both the transmitter and receiver are working properly and within range of each other.
- The wireless signal transfer range may be shortened if there exists an obstacle such as a concrete wall or human body between the shoes and the signal receiving device.

## Users Guide

Please visit [www.traqnation.com](http://www.traqnation.com) for product setup instructions.

This device complies with Part 15 of the FCC Rules. Operation is subject to the following two conditions:

(1) This device may not cause harmful interference, and (2) This device must accept any interference received, including interference that may cause undesired operation.

### 1. Install the TRAQ APP in the smartphone.

(1) For iOS device, browse the TRAQ APP in the iTunes Store,

(2) For Android device, browse the TRAQ APP in the Google Play store,

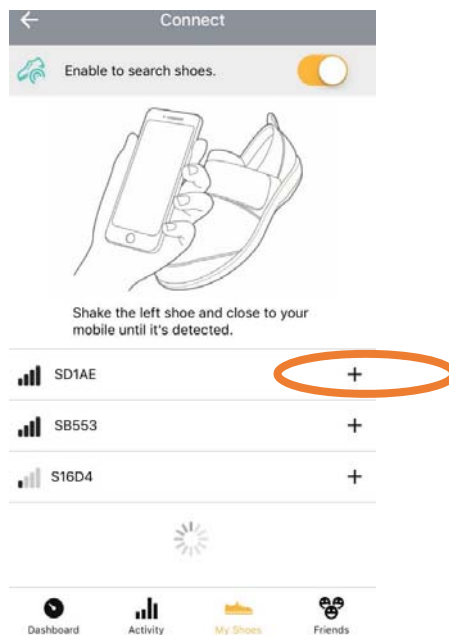
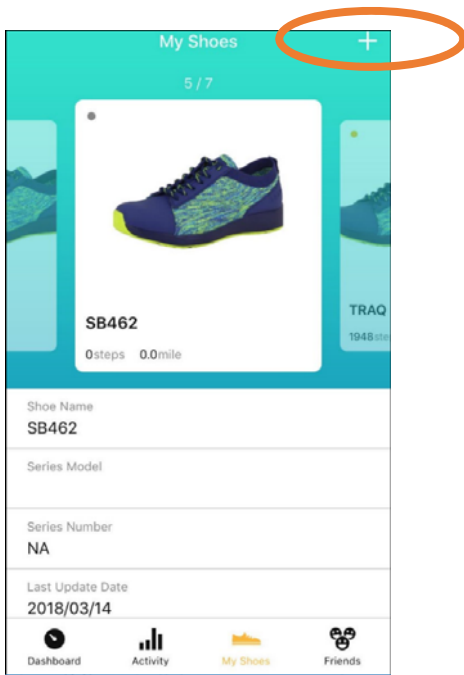
or scan the 2D bar code printed on the shoes box. Download the APP and install in the smartphone.

### 2. Bonding the shoes with the smartphone.

Launch the APP. Then shake the shoes to wake-up the SmartCube inside.

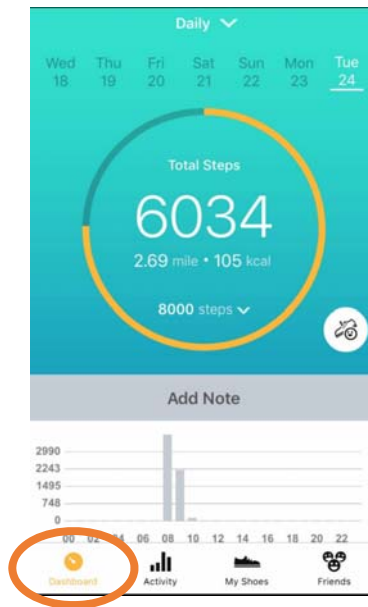
Press "+" to scan the shoes. Choose the shoes to be bonded.

(Nearest shoe has the strongest RF signal)



### 3. Begin to use the smart pedometer

If the shoes are successfully bonded to the APP, the walking steps information in the shoes will be synchronized with the smartphone.



### Federal Communication Commission Interference Statement

This equipment has been tested and found to comply with the limits for a Class B digital device, pursuant to Part 15 of the FCC Rules. These limits are designed to provide reasonable protection against harmful interference in a residential installation.

This equipment generates, uses and can radiate radio frequency energy and, if not installed and used in accordance with the instructions, may cause harmful interference to radio communications. However, there is no guarantee that interference will not occur in a particular installation. If this equipment does cause harmful interference to radio or television reception, which can be determined by turning the equipment off and on, the user is encouraged to try to correct the interference by one of the following measures:

- . Reorient or relocate the receiving antenna.
- . Increase the separation between the equipment and receiver.
- . Connect the equipment into an outlet on a circuit different from that to which the receiver is connected.
- . Consult the dealer or an experienced radio/TV technician for help.

**FCC Caution:** To assure continued compliance, any changes or modifications not expressly approved by the party responsible for compliance could void the user's authority to operate this equipment. (Example - use only shielded interface cables when connecting to computer or peripheral devices).

### FCC Radiation Exposure Statement

This equipment complies with FCC RF radiation exposure limits set forth for an uncontrolled environment.

This transmitter must not be co-located or operating in conjunction with any other antenna or transmitter.