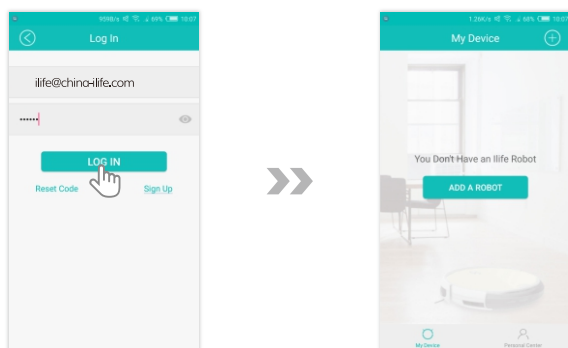


APP download & operation

Login

1. Click ⊕ on the upper right corner to add a robot. You will be directed to "Sign Up."
2. Enter your registered email and password.
3. Click "Log in."
4. After logging in, you will be directed to "My Device."

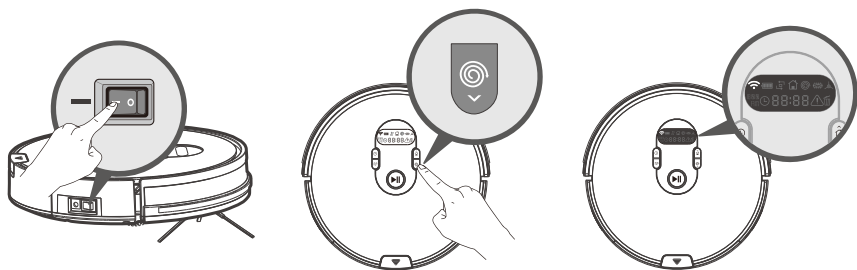


Adding a device

1. Connecting to WiFi

Connect your mobile phone to WiFi and make sure the signal is strong.

2. Network Distribution

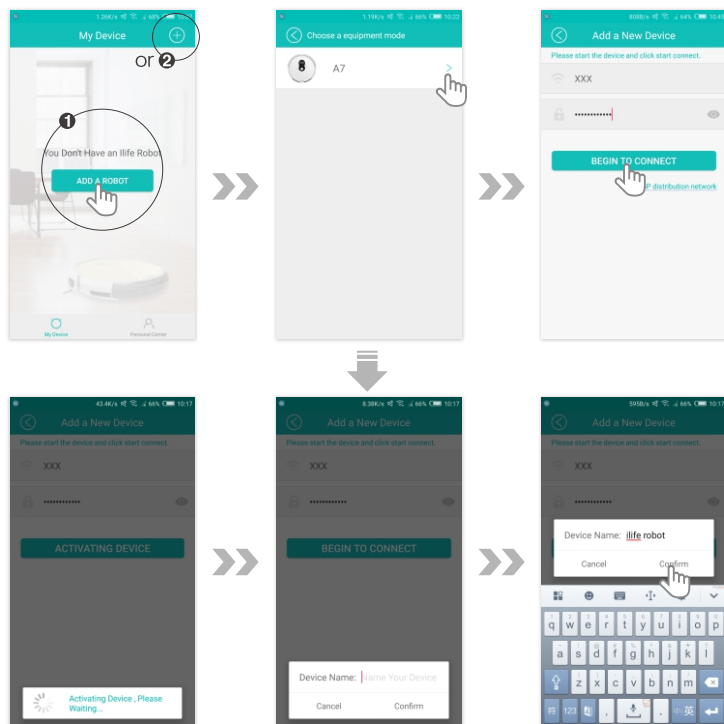


- 1 Switch on the robot. It is on standby.
- 2 While on standby, press and hold . Release the button after a buzz.
- 3 WiFi light on the robot flashes when network distribution is in progress.

APP download & operation

3. Using APP network distribution

Connect your mobile phone to WiFi and make sure the signal is strong.



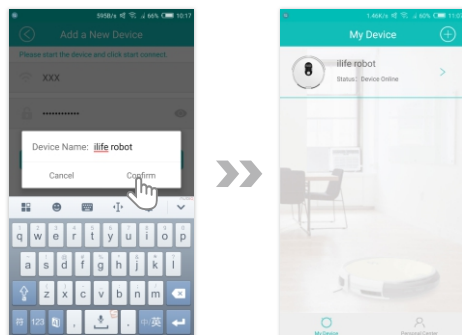
Note: if network distribution fails, restart the APP and repeat the steps or follow the steps in 4.22 "AP Distribution."

4. Completing Binding

- 1 When binding is completed, the robot will confirm with a buzz. The WiFi light stays on when the robot is successfully connected to WiFi.
- 2 When binding is successful, a prompt box "Device Name" will appear on the APP. Enter a name, click "Confirm" and you will be directed to "Setting."

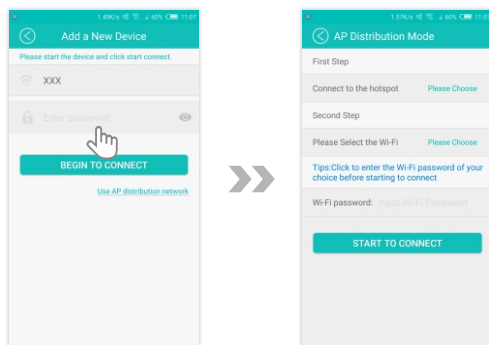
APP download & operation

- 3 The first user adding a new device will become the administrator. Only administrator can share the device with other users. Before the administrator unbinds the device, other users cannot directly bind to the device.



5. Using AP Distribution

- 1 Skip this step if the device has been bound.
- 2 Press and hold "AP Distribution," you will hear a buzz after 3 seconds. Continue to hold the button until you hear two buzzes, and the device enters "AP Distribution Mode." (See 4.22 for details)
- 3 To add a new device, click on (icon) on the upper right corner of the APP interface.
- 4 In "Add a New Device," choose the robot model (A7). In "AP Distribution Mode," follow these steps:
 - 1) Android users choose "Connect to the hotspot" and connect to "Robot" hotspot SSID. iPhone users connect to "Robot" hotspot SSID manually and return to the APP.
 - 2) Choose WiFi SSID from the popup list. Enter WiFi and SSID passwords and click "Start to Connect."
- 5 Enter a name for your robot. Click "Confirm" to start binding. It may take some time, please be patient.

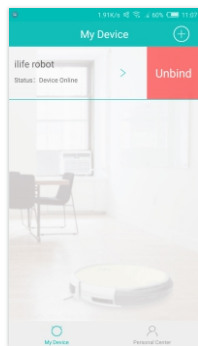


APP download & operation

Unbinding a device

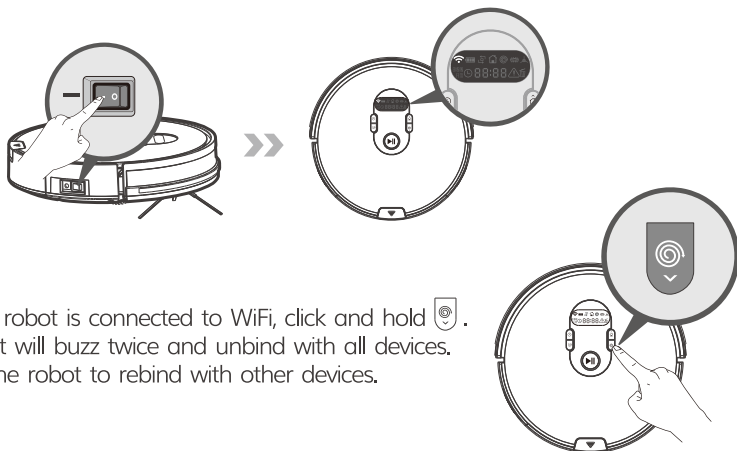
1. Through administrator


- 1 Log into the APP as administrator.
- 2 In "My Device," click on the device that needs to be unbound, and swipe to right.
- 3 Click "Unbind" to remove devices and users.




2. Through the robot

- 1 Turn on the robot, wait for 30 seconds for WiFi connection. WiFi is connected when the robot buzzes and the flashing WiFi light turns solid.



- 2 After the robot is connected to WiFi, click and hold . The robot will buzz twice and unbind with all devices. Restart the robot to rebind with other devices.

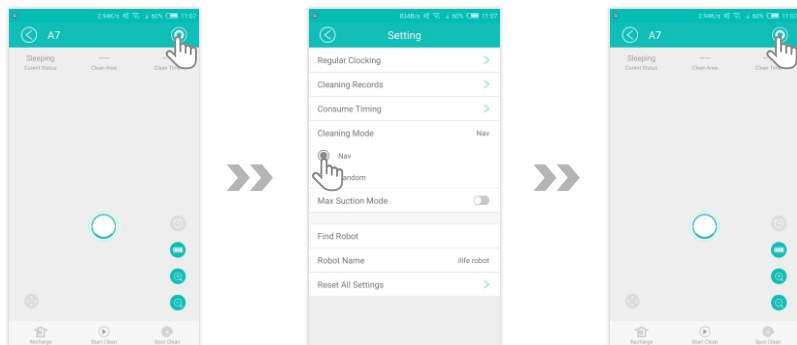
Note: if the robot cannot connect to a network, press and hold  on the robot. If the robot is in "AP Distribution Mode," open the APP and connect to the network. The APP will notify the device is already bound. Follow (2) to continue unbinding.

APP download & operation

Sending commands

1. Starting a cleaning mode

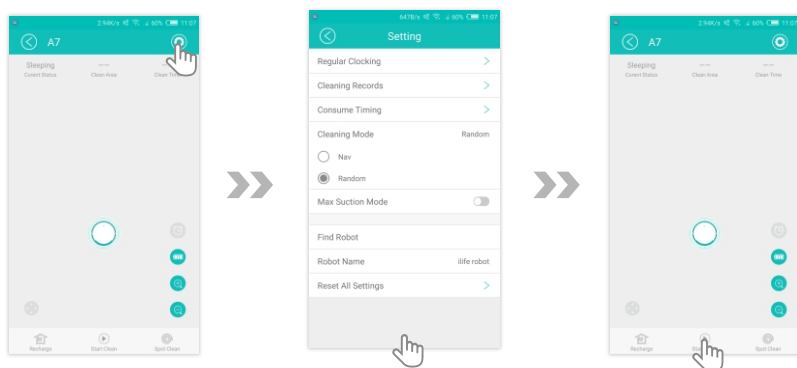
Choose a robot from the device list to enter "Setting."



Note: Click  again to stop cleaning.

2. AUTO mode

Choose a robot from the device list to enter "Setting."



Note: Click  again to stop cleaning.