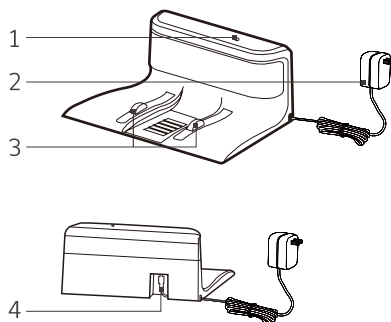


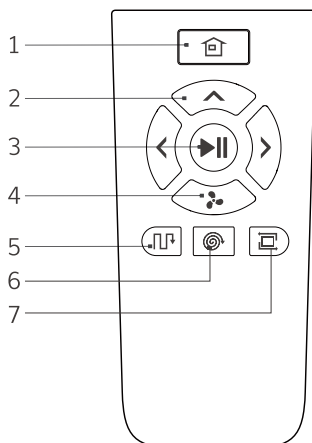
Product Parts

Charging base



1. Power Supply Light
2. Adaptor
3. Charging Pins
4. Adaptor Power Socket

Remote control



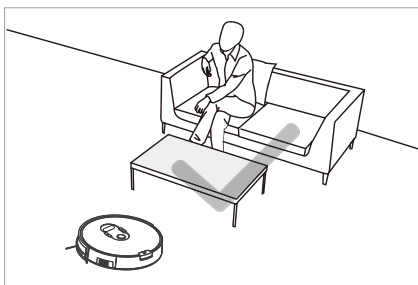
1. HOME (return to charging base)
2. Direction Button
3. Start/Pause
4. MAX Mode
5. Path Mode
6. Point Mode
7. Broder Mode

How to Use

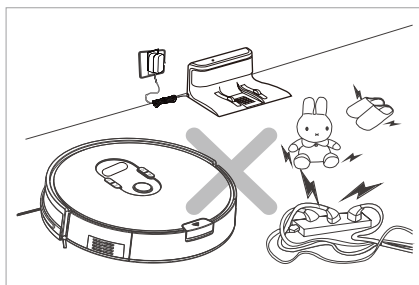
A7 may miss some complex details in a single scan. Use the robot more often and remove obstacles to help it get familiar with your home every time it scans its surroundings.

Tips for using the robot

The following instructions will help the robot to get familiar with the environment and clean more efficiently.



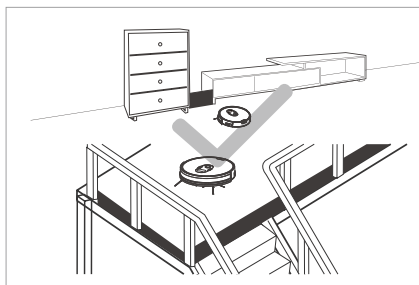
When the robot works for the first time, give it some assistance and remove obstacles on the floor.



Before cleaning, remove objects on the floor (e.g. power line, toys) that may stumble the robot.

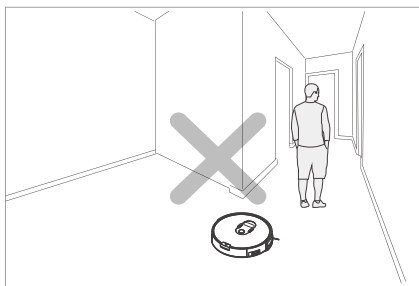


To clean more efficiently, put the furniture and electronic appliances in place.



When the robot is cleaning the upper floor of a duplex or a raised platform, make sure no one stands near the stairs to avoid objects falling down the stairs.

How to Use



Do not stand near narrow spaces such as thresholds or passageways when the robot is working, or the robot may skip the area.

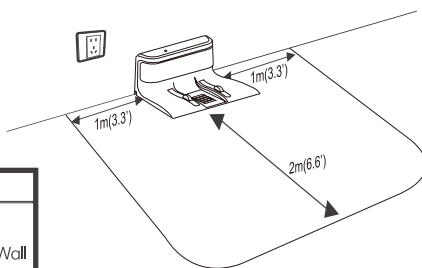
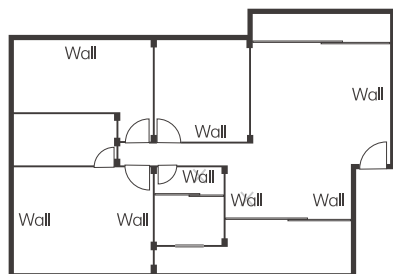
Quick operation

Charge preparation

1. Charging base and power supply

Connect the adaptor with the charging base. Put the charging base on a flat surface and against a wall. Remove obstacles about 1 meter on both sides and about 2 meters in front.

1
Step



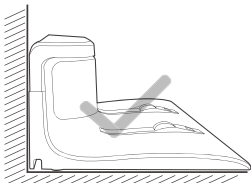
Connect to power supply

2
Step

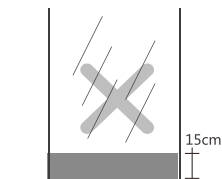


How to Use

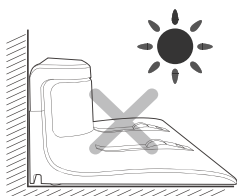
! Precautions



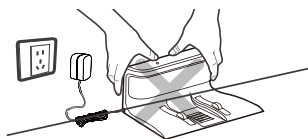
Put the charging base on a flat surface and against a wall.



Cover reflective objects (eg. mirror) about 15cm from the floor.



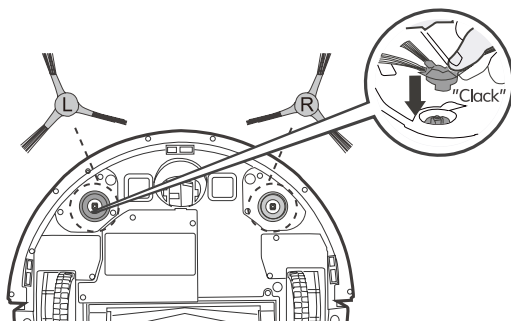
Do not put the charging base in direct sunlight.



Do not move the charging base while the robot is working. It may disturb the robot's return route for recharge.

2. Installing side brushes

- Follow the color codes when installing the sides brushes. Make sure both sides are securely installed.

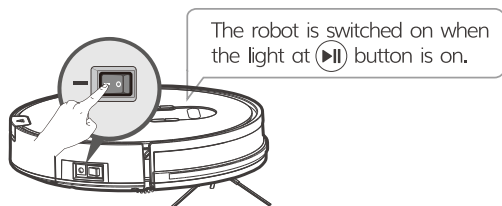


How to Use

> Charging begins

1. Switching on robot

- Turn on the power switch on the side. "I" is to turn on the robot and "O" is to turn off.



2. Charging

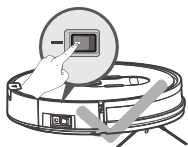
- Put the robot on the charging base.

- ▶▶ Flashing light: Charging in progress.
- ▶▶ Solid green light: Charging completed.
- ▶▶ Light off: In energy-saving sleep mode.

Before first use, put the robot on the charging base for charging.



Precautions



Keep the power switch on ("I") while charging.

> Start

- Press ▶▶ on the robot remote control. ▶▶ on the robot will flash. AUTO cleaning mode will begin when the light at ▶▶ turns solid.

