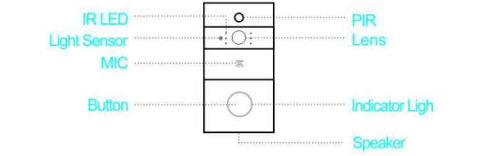


Low-Power Consumption WIFI Battery Doorbell

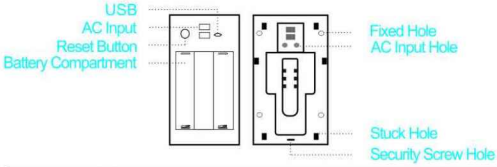
Quick User Manual

*Please read this manual carefully and keep it in a safe place for future reference

Introduction

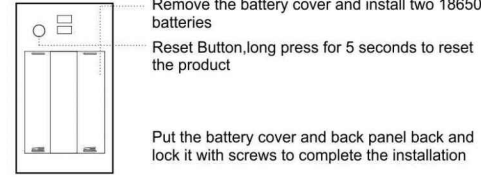
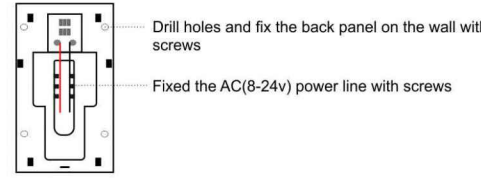
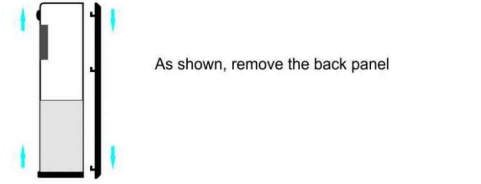


- Infrared light** When the light not strong, it will enable infrared light to increase the environment brightness
- Light Sensor** Enable the infrared light when illumination is below 2lux
- Microphone** Capture voice and Intercom
- Push Button** Wake up the device and inform you when someone visit
- PIR** Detect movement and send alarm to smart phone
- Lens** Capture image video
- Indicator Light** Red Light flash slowly: Waiting for Wi-Fi Configuration
Blue light flash slowly: Working State
Red blue light flash off and on: Wi-Fi Connecting Failed
- Speaker** Emit system sound and Intercom



- USB** Through the USB to device power supply.
- AcInput** Power is supplied to the equipment by installing the AC input supply hole on the mounting bracket.
- ResetButton** Equipment working status, long press 5 seconds to restore factory settings.
- Battery Compartment** Mounting 18650 specification battery.
- Fixed Hole** Fit the support on the wall with the mounting screws for the mounting kit.
- ACInput Hole** The power supply of the equipment can be supplied by connecting the hole and the AC power supply on the wall.
- Stuck Hole** Mounting the equipment onto the bracket.
- Security Screw Hole** Mounting the security screw on the fittings to prevent the equipment from being removed.

Installation Guide



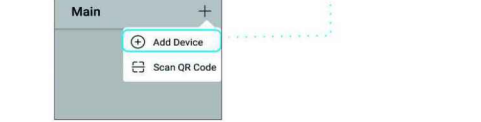
Chime Pairing(not included)

Code: Long Press Volume key for 5 seconds until you hear "Ding" sound and the receiver LED Light flashing at the same time
Press the Doorbell push button for three times within 8 seconds and code successfully

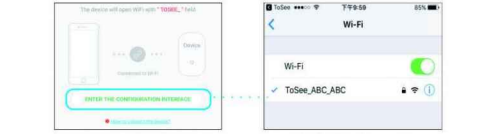
Reset: Long press the chime forwarder key for 5 seconds until you hear "Ding" sound and the receiver LED Light flashing at the same time

Connect Device

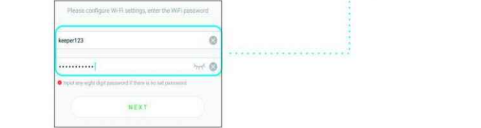
- Download APP "ToSee" from Google Play or iOS APP Store. (Please allow all the phone notifications permissions for better user experience)
- Open the APP and Tap "+" button on the right corner and click "Add Device"



- Click the button below to enter the Wi-Fi Settings interface and choose the Wi-Fi with ToSee_prefix and back to APP



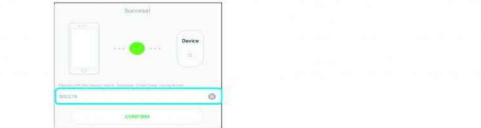
- Input you Wi-Fi Password and start Wi-Fi Configuration



- Set the administrator password



- Please rename the device after Wi-Fi connect successfully



- If you want to reconfigure your Wi-Fi network, please press reset button for 5 seconds and follow the instructions again

Technical Parameter

Resolution	1280*720
View Angle	166°
Infrared Light	6 pieces 850mm led lights
Wi-Fi	Support 802.11 b/g/n
Audio	Clarity Intercom
Recording	TF Card(Every 15 Seconds)
SD Card	Max. up to 32G
Battery	2*18650 Battery
Notifications	Instant Notifications within 2S
Wake Up Time	Within 600MS
Wake Up Way	Push Button PIR Mobile Phone Active
Consumption	Standby current 200μA Working current 170mA

- Two 18650 Batteries (6800mAh), working 10 minutes every day can be used for 6-8 months

Q&A

- Q:** Device can't connect Wi-Fi
A: 1. Make sure the connect Wi-Fi is 2.4G
2. Make sure the indicator red light flash slowly
3. Check the password whether it is correct or have space
- Q:** Device can't receive any notifications
A: Please check it again whether you phone notification permissions enabled
- Q:** Device Power Mode
A: 1. Use the 18650 standalone
2. Use AC(8-24V) to charge the battery
3. USB Port to charge the battery

Function Introduction

- Two 3400mAh original battery can be used for 6-8 months
- High Definition resolution with 1.7MM wide-angle lens
- Support mobile phone wake up device
- Support 2.4G wireless
- Clarity Intercom
- Support PIR motion detection. When someone pass the doorbell, it will send instant APP notifications to APP
- Day and night mode automatic switch to provide high definition view to protect you and your family

FCC Statement

This equipment has been tested and found to comply with the limits for a Class B digital device, pursuant to Part 15 of the FCC Rules. These limits are designed to provide reasonable protection against harmful interference in a residential installation. This equipment generates uses and can radiate radio frequency energy and, if not installed and used in accordance with the instructions, may cause harmful interference to radio communications. However, there is no guarantee that interference will not occur in a particular installation. If this equipment does cause harmful interference to radio or television reception, which can be determined by turning the equipment off and on, the user is encouraged to try to correct the interference by one or more of the following measures:

- Reorient or relocate the receiving antenna.
- Increase the separation between the equipment and receiver.
- Connect the equipment into an outlet on a circuit different from that to which the receiver is connected.
- Consult the dealer or an experienced radio/TV technician for help.

Changes or modifications not expressly approved by the party responsible for compliance could void the user's authority to operate the equipment.