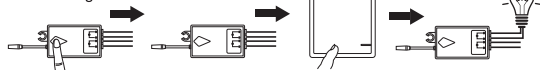


## Learning Code Operation

Read the learning code operation before installation.

### First Pairing



1. Connect the receiver between the light and the power source.
2. Press and still the receiver button for 2 seconds. When the signal light flashes, it enters the matching code mode, then loosen your grip.
3. Press the wireless switch button that you want to pair. Use the wireless switch to control the light on or off, indicating that the learning code is successful.

## Adding a switch from paired switch



1. Press and still the paired wireless switch button for about 5 seconds till the blue LED light on the switch panel starts to quick flash, then loosen your grip from the button. Meanwhile:
  - If the light connected with the paired receiver was on before, it will turn off.
  - If the light connected with the paired receiver was off before, it will turn on for one second and then turn off.
  - If the red LED light on the receiver keeps flashing, it indicates it's in learning mode.
2. Press the new switch button once, if the device connected with the receiver turns on, the pairing succeeds.

7

## Delete the switch code that has been paired



1. Press and still the button you want to delete for about 10 seconds (during this time, the Blue LED would change from quick flash to slower flash) till the signal light flashes slowly (blue LED flashes once per second)
2. When the Blue signal flashes slower, loosen your grip, then press the button once again.
  - If the lamp is ON, it will be off.
  - If the lamp is OFF, it will light 1 second, then be OFF. The delete button operation succeeds.

## Delete a receiver that pairing code

Press and still the button of the receiver for about 10 seconds (during this time, the red LED would change from quick flash to slower flash) till the signal light flashes slower. Loosen your grip, then press the button once again.



Note:

- One receiver can be paired with 8 switch buttons at most.
- You can only pair the button and receiver one by one.
- Please use the paired button to pair new buttons to the receiver.

8

## 2 minutes delay function

The 2 mins-delay function is mainly used at the stair hall, long corridor or passageway. Enter the auto off mode

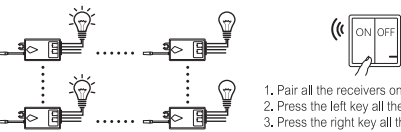
1. First, turn off the power, then press and still the button of the receiver. Meanwhile, turn on the power source. About 1 second later, the signal light on the receiver will flash 4 times quickly. Then loosen your grip, the receiver has entered the delay off mode.
  2. In delay off mode, press the paired switch button once, the light will turn on for 2 minutes, then turn off automatically.
- NOTE:** If you press again during the 2 minutes, the receiver will be retiming for another 2 minutes.



## Cancel the 2 mins-delay function

Cut off the power supply of the receiver. Press and still the button of the receiver. Meanwhile, turn on the power supply. About 1 second later, the signal light will flash slowly twice. Then release the button, the receiver exits the auto off mode, and goes back to normal on/off mode.

## Main ON/OFF switch

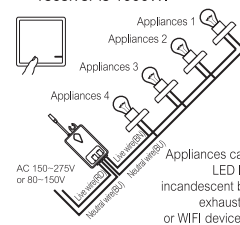


1. Pair all the receivers on this Total ON/OFF switch;
2. Press the left key all the lights will light up;
3. Press the right key all the lights will go out.

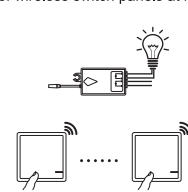
9

## Application (Home, hotel, inn or Factory etc.)

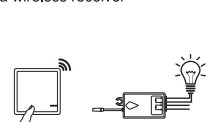
a. The integrated load of the wireless receiver is 1000W.



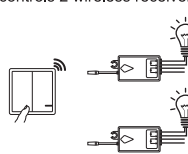
b. A receiver can be controlled by 8pcs of wireless switch panels at most.



c. A one-gang wireless switch controls a wireless receiver

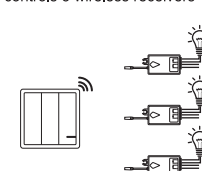


d. A two-gang wireless switch controls 2 wireless receivers

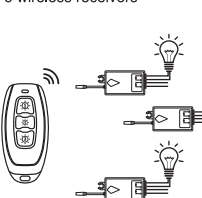


10

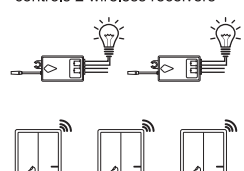
e. A three-gang wireless switch controls 3 wireless receivers



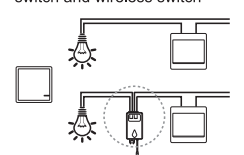
g. A hand remote control controls 3 wireless receivers



f. Three two-gang wireless switches controls 2 wireless receivers



h. Compatible scene of traditional switch and wireless switch



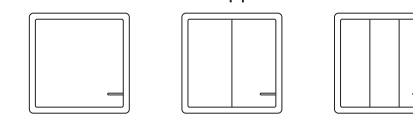
1. The receiver must be in "ON" state.
2. Make sure the traditional switch is in "ON" state.
3. If the traditional switch is in "OFF" state, the wireless switch cannot control the lamp.

11

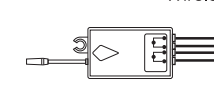
# Wireless Switch User Manual

Model Name: SW-K1&R01

## Product Appearance



Wireless Switch



Receiver



Hand Remote Control

Connect to the device you want to control Function is the same as three gangs

Manufacturer: Shenzhen King-Serry Electronics Co.,Ltd  
FCC ID: 2ANPS-SWK1R01

80 × 80(mm)

This device complies with part 15 of the FCC Rules. Operation is subject to the condition that this device does not cause harmful interference (1) this device may not cause harmful interference, and (2) this device must accept any interference received, including interference that may cause undesired operation.

Any changes or modifications not expressly approved by the party responsible for compliance could void the user's authority to operate the equipment.

**NOTE:** This equipment has been tested and found to comply with the limits for a Class B digital device, pursuant to Part 15 of the FCC Rules. These limits are designed to provide reasonable protection against harmful interference in a residential installation. This equipment generates, uses and can radiate radio frequency energy and, if not installed and used in accordance with the instructions, may cause harmful interference to radio communications. However, there is no guarantee that interference will not occur in a particular installation.

If this equipment does cause harmful interference to radio or television reception,

which can be determined by turning the equipment off and on, the user is encouraged to try to correct the interference by one or more of the following measures:

- Reorient or relocate the receiving antenna.
  - Increase the separation between the equipment and receiver.
  - Connect the equipment into an outlet on a circuit different from that to which the receiver is connected.
  - Consult the dealer or an experienced radio/TV technician for help.
- To maintain compliance with FCC's RF Exposure guidelines, this equipment should be installed and operated with minimum distance between 20cm the radiator your body: Use only the supplied antenna.

1

## Features

- **Controlling** — One switch can control one receivers and a receiver can be controlled by 8 wireless switches.
- **Control Distance** — Over 700m outdoor, more than 50m indoor.
- **Ultra-long life** — Over 600, 000 times of wireless ON/OFF switches, over 400, 000 times of ON/OFF receiver.
- **Energy-saving** — No standby power consumption. Use MACELL battery CR2032. Battery lifespan is more than 300,000 times of power ON/OFF.
- **Easy to install** — No wiring, no piping, install in 6 minutes .
- **2 mins-delay function** — The 2 mins-delay function can be set by wireless receiver.
- **Main on/off switch** — Main on/off switch is a special two-gang wireless switch. When paired, the left button controls ON function,while the right one is on the contrary.
- **Fluorescent function** --- When the light is turned off, the wireless switch panel has the fluorescent display, which is convenient to find the position of the switch.
- **ON/OFF function of the receiver** --- You can set the receiver in ON or OFF state, according to different scenes.
- **Adding a switch from the paired switch** --- You can increase the switch by using the switch that has already been paired.
- **Rolling code technology** — With 16,000,000 kinds of address code combination, no possibility of coincident code.
- **Low radiation** — The WIFI gateway radiation is 500mW. The wireless switch radiation is 15mW.
- **Switch panel can be replaced** --- Three kinds of button panels share the universal switch base.

2

## Specifications

### Parameters of the wireless switch

Product Size	86*86*11MM	Type	1-gang,2gang,3-gang
Switch times	600,000 times	Working frequency	433.932 MHz +/-75KHz
Sensitivity	-116db	Working voltage	3V (CR2032)
Package weight	82~86g	Life of the battery	>300,000 times
Emission current	≤30 mA	Standby current	≤0.01 uA
Working temperature	-40~+75℃	Waterproof	IP54
Working characteristics	No need wiring	Fireproof PC	CHIMEI
Remote distance	>700m outdoor	Light on the switch	Blue light
Remote distance	>50m indoor	Interchangeable panel	The three kinds of panels can be interchangeable

### Parameters of the wireless receiver

Product Size	39*23*22MM	Working voltage	AC 150~275V or 80~150V
Switch times	>400,000 times	Working frequency	433.932 MHz +/-75KHz
Sensitivity	-116db	Relay	10A
Working current	≤0.8W	Standby current	≤0.5W
Resistive load	1800W	Composite load	1000W
Temperature rise when working	≤15℃	Fireproof PC	CHIMEI
Signal light on the receiver	Red light	Package weight	32~35g

3

## Parameters of the metal hand remote

Size	62*30*12MM	Working frequency	433.932 MHz +/-75KHz
Waterproof	IP44	Quantity of the button	3 buttons
Working voltage	2~3V(CR2032)	Life of the battery	>500,000 times
Standby current	≤0.1 uA	Working temperature	0~65℃
Emission current	≤25 mA	Storage temperature	-10~85℃
Emission Power	>+5dbm	Remote distance	>160m outdoor >20m indoor

## Installation

### Wireless Switch

The switch can be surface mounted with screws or double-sided stickers, or set it on the table.

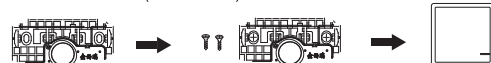
### 1. Install with Double-sided adhesive. (Included)



Pick up the area where you're going to place the switch, clean the surface with wet rag, post the adhesive rubber in the back of the switch, then attach the switch to the clean surface.

4

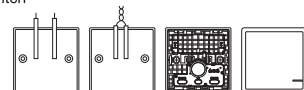
### 2. Install with screws (not included)



First, take apart the frame and button panel of the switch (Please check the chapter of the switch panel disassembly). Fix the switch base on the wall with two screws, then install the parts together.

### 3. Replace the old wired switch

First, remove the cover of the old switch, twist the wires together and wrap them with insulated tapes (TURN OFF the power before doing this), then install wireless switch with adhesive rubber or screws.



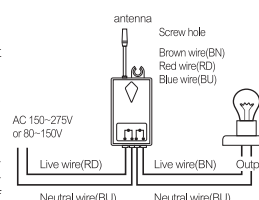
## Installation

### Receiver

**WARNING:** Make sure there is no power supply before installing the wireless receiver!

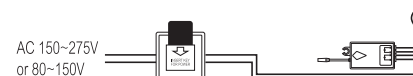
**Wiring:** The red wire and blue wire input power. The red wire is live line. The brown wire and blue wire output power. The brown wire is live line. The blue wire is neutral line.

**Note:** The receiver can be surface mounted with screws or adhesive pads. Or you can just leave it alone after connecting it with the light or other devices, keep it hang there because of its light weight.

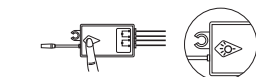


5

## ON/OFF function of the receiver



The default mode of the wireless receiver is OFF. When a card is inserted, the lamp doesn't light on automatically.



Set the default mode of the receiver in "ON" state  
Press and still the receiver button for 15 seconds. Then Loosen your grip, the receiver will change into "ON" mode. (During the 15S, the signal light will change from quick flash to slower flash. After that, the signal light will be off, then will be on).



If the default mode of the receiver is "ON", the lamp will light on automatically when insert a card.

6