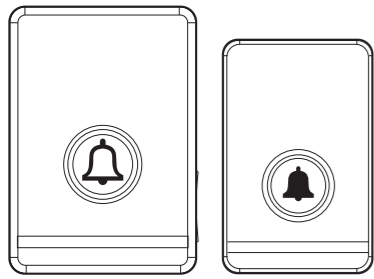


Wireless Doorbell

- * Waterproof
- * Long range
- * Low temperature resistance

KS-DB03
User Manual

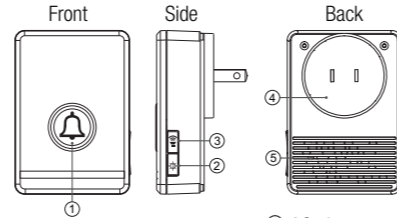


Key Highlights:

- * Physically simple and elegance.
- * Ringtone rhythm lamp and loudspeaker which are aesthetically and acoustically pleasant.
- * Feel extra comfortable when lite up gently at night time.
- * Batteries life span is ~ 6 to 10 years and rarely for batteries replacement.
- * IP54 waterproof, low temperature resistance, suitable expose to outdoor rain and snow weather.
- * Advanced wireless technology, long distance transmission, suitable for grand houses or heavy duty anti-theft doors.
- * Extra detailing functions: Power-off memory function, privacy button, ultra-low power consumption, pairable wireless sensors.
- * Workable areas: Private houses, villas, schools, companies, hospitals and etc..

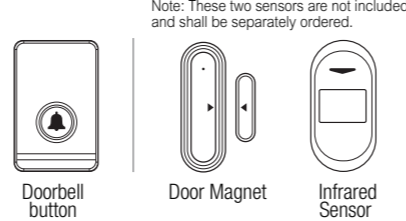
1. Physical Structure:

1.1 Receiver



- 1 【🔔】 Select ringtone key
- 2 【🌙】 Night light setting key
- 3 【🔊】 Volume setting key
- 4 AC plug (Different countries use different plug standard)
- 5 ⌀ 40mm loudspeaker

1.2 Transmitter



Note: These two sensors are not included and shall be separately ordered.

2. Installation and User Guide:

2.1 Installation

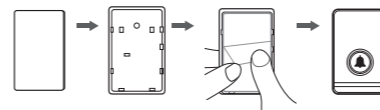
2.1.1 The device shall be installed at an appropriate height near the door on a clean wall surface. It is recommended to install transmitter button on the wall to avoid wireless signal interference instead of mount at a metal door.



Figure: Installation position

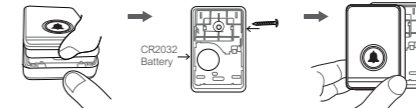
2.1.2 Take out one side of double-sided tape liner (together with the device) and attached to provided surface of the device. After remove another side of the liner, attach the device at a proper position on the wall/door. Please press the device for 30 seconds continuously before release. The tape will more firmly adhered.

Tape Pasting Method:



2.1.3 Please use a screw to fix the device if the tape is not adhere to the wall firmly.

Figure: Screw assembly method



2.1.4 After plug into a suitable socket, test and setup the receiver. The factory default settings of receiver are in maximum volume and night light off mode.

2.2 Functional settings

2.2.1 Press 【🔔】 key to select ringtone for preview the doorbell ringtone at first 10 seconds with 48 ringtones selection.

Tip: If return to the first ringtone quickly, please press and hold the receiver's 【🔔】 select ringtone key and plug-in the socket, the receiver will produces "Di" sound to restore the factory default settings.

2.2.2 Press 【🔊】 key to set volume level: 4、3、2、1、mute (only flash LED light)

2.2.3 Press 【🌙】 key to set 7 levels of brightness: OFF-1、2、3、4、5、6.

2.3 Daily use

2.3.1 Normal doorbell function: After pressed the doorbell button, the receiver plays the selected ringtone and the LED lamp flashes according to the ringtone.

2.3.2 Private doorbell function: After the private mode of the doorbell button is pressed, the receiver plays preset the doorbell ringtone as per initial paired bonding setting, this ringtone is not affected by the 【🔔】 ringtone selection key.

2.3.3 Detection reminder function: Like pairing door magnet/ infrared motion sensor, the sensor will be triggered same as when press the wireless doorbell button.

2.3.4 Night lamp function: After press the button 【🌙】, the device's LED lamp will light up gently, feel warm and safe if the surrounding is in dark condition.

2.4 Pairing Function

1 receiver to 1 transmitter has already been paired in factory and could use it directly. If requires 1 receiver with 2 transmitters, or 2 receivers with 1 transmitter, or multiple receivers with multiple transmitters or other options, please do the pairing accordingly.

Normal Doorbell Pairing Method:

1) Press and hold 【🔊】 volume button for ~ 3 seconds and enter into learning code mode, the LED will lights up and the receiver will produces "Du" sound, then release it.

2) Press the device button (or trigger the door magnet / the infrared sensor), the receiver will produces sound "Du" to indicate the pairing is successful.

Private Door Pairing Method:

Set the private doorbell button and choose a "special ringtone" to remind the owner if use in a private door for go in and out. The pairing method is as follows:

1.) Press 【🔔】 ringtone selection key of the receiver to choose a "special ringtone".

2.) Press and hold 【🔔】 ringtone selection key for ~ 3 seconds enter into learning code mode,

the LED will lights up and the receiver will produces "Du" sound, then release it.

3.) Press device button (or trigger the door magnet / the infrared sensor), the receiver will produces "Du" sound to indicate the pairing is successful. When the device is paired with this method, the receiver plays the "special ringtone" which is not affected by the ringtone selection key.

Tips: Support up to 32 private buttons corresponding to 32 ringtones; Suggest for the door magnet / the infrared sensor to choose an alarm sound to realize the two-in-one function of doorbell and alarm.

Note: Only 1 transmitter/1 sensor can be paired once at a time. If more than 1 pairing, please repeat the above pairing method. Each receiver can pair up to 32 transmitters/sensors. If 1 transmitter controls multiple receivers, please repeat the above pairing method.

ALL Pairing Reset Function:

Press and hold 【🔊】 volume key for ~10 seconds, the receiver will produces "DuDuDu" sound, then all pairing will be deleted automatically.

3. Technical specifications:

- 3.1 Doorbell volume : 85~97dB
- 3.2 Working frequency: 433.92MHz
Wireless range: Open space ~ 400m, 40m~80m indoor with obstacles.
- 3.3 Receiver operating voltage: 80~275V
Standby power consumption: 100mW
- 3.4 Transmitter waterproof : IP54
Battery type : CR2032 (included)
Battery lifespan: 300K presses, 6~10 years (assume press 30 times/day)
- 3.5 Environment operating temperature:
Receiver: -20~70 C
Doorbell button: -40~70 C
- 3.6 Environment operating humidity:
Receiver: < 90% RH
Doorbell button: <95% RH
- 3.7 Storage temperature:
Receiver: -20~70 C
Doorbell button: -40~70 C

4. Precautions and Troubleshooting

4.1 Precautions:

4.1.1 Proper use can prolong this device lifespan.

4.1.2 Non-professional shall not dismantle the device for repair to avoid precision electronic components damage.

4.2 Troubleshooting

Please follow below troubleshooting guides for self-check otherwise contact customer service for further assistance if necessary.

4.2.1 The doorbell does not ring.

- 1) Check whether the receiver is plugged in properly;
- 2) Check whether the receiver is in silent mode.
- 3) For unpaired case, reset to re-pairing.

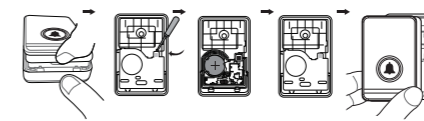
4.2.2 Short range transmission:

- 1) Not recommended to install the doorbell button near to any metal object which blocks the wireless signal.

2) Not recommended to plug the receiver into sockets near routers, computers, water tank motors, etc. with strong interference signal.

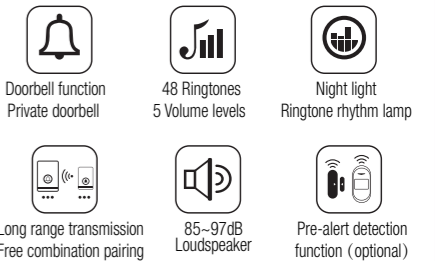
3) Radio signal transmission diffracts through barriers such as walls which expects normal if the signal transmission range is reduced significantly. Please adjust the receiver or transmitter button position accordingly.

5. Replace the battery



Disassemble the panel

Remove the battery cover shell with a slotted screwdriver to replace the battery (Leave positive pole of the battery upwards), fix and lock the battery cover then cover the panel



FCC Warning

This device complies with Part 15 of the FCC Rules. Operation is subject to the following two conditions:

(1) This device may not cause harmful interference, and (2) this device must accept any interference received, including interference that may cause undesired operation.

NOTE 1: This equipment has been tested and found to comply with the limits for a Class B digital device, pursuant to part 15 of the FCC Rules. These limits are designed to provide reasonable protection against harmful interference in a residential installation. This equipment generates uses and can radiate radio frequency energy and, if not installed and used in accordance with the instructions, may cause harmful interference to radio communications. However, there is no guarantee that interference will not occur in a particular installation. If this equipment does cause harmful interference to radio or television reception, which can be determined by turning the equipment off and on, the user is encouraged to try to correct the interference by one or more of the following measures:

- Reorient or relocate the receiving antenna.
- Increase the separation between the equipment and receiver.
- Connect the equipment into an outlet on a circuit different from that to which the receiver is connected.
- Consult the dealer or an experienced radio/TV technician for help.

NOTE 2: Any changes or modifications to this unit not expressly approved by the party responsible for compliance could void the user's authority to operate the equipment.