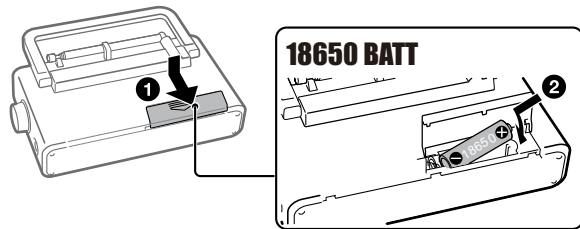


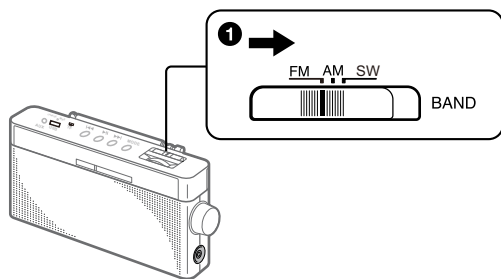
FM/AM Radio

Operating Instructions

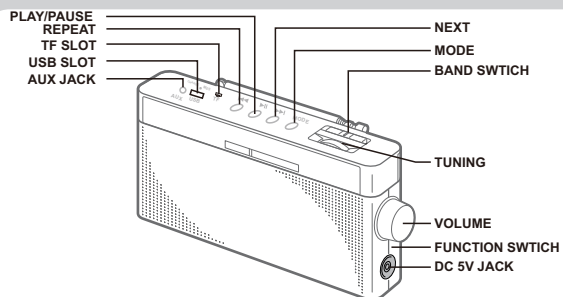
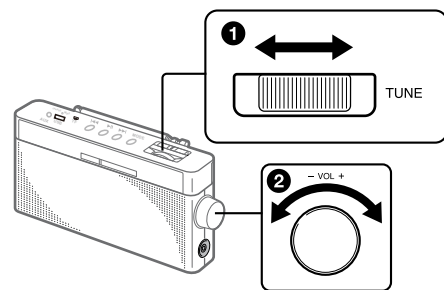
1



2

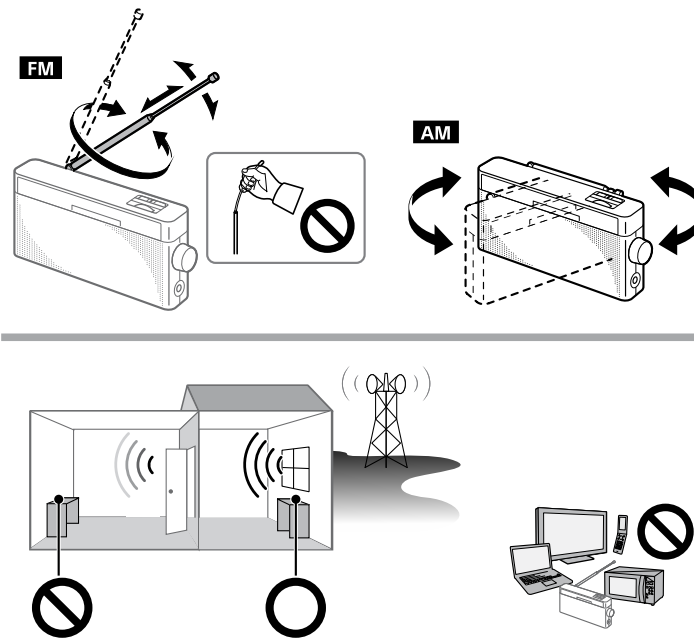


3



6. USB/TF

For Better Reception



4) To Play Songs by mobile phone, put the power on, press mode button select the function to **BLUETOOTH**, use mobile phone connect.

WARNING

Do not install the appliance in a confined space, such as a bookcase or built-in cabinet.

Do not expose the appliance to naked flame sources (for example, lighted candles).

Batteries or batteries installed apparatus shall not be exposed to excessive heat such as sunshine, fire or the like.

The nameplate and important information concerning safety are located on the bottom exterior.

Precautions

- Operate the unit only on 3.7V 18650 li-ion battery
- Avoid exposure to temperature extremes, direct sunlight, moisture, sand, dust or mechanical shock. Never leave in a car parked under the sun.
- Should anything fall into the unit, remove the batteries, and have the unit checked by qualified personnel before operating it any further.
- Since a strong magnet is used for the speaker, keep personal credit cards using magnetic coding or spring-wound watches away from the unit to prevent possible damage from the magnet.

Specifications

Frequency range: FM:88-108MHz
AM:530-1600KHz
SW:8-18MHz

Power output: 100 mW (at 10 % harmonic distortion)

Power requirements: 5 V DC,
One pcs 18650 battery

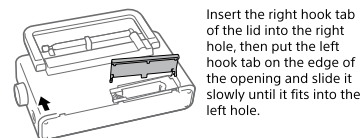
Battery life*: Approx. 100 hours (FM reception)/
Approx. 110 hours (AM reception)

Dimensions (W/H/D): Approx. 190.1 mm ×
97.3 mm × 51.3 mm (incl. projecting parts)

Quantity: Unit (1)

Design and specifications are subject to change without notice.

If the battery compartment cover comes off



Insert the right hook tab of the lid into the right hole, then put the left hook tab on the edge of the opening and slide it slowly until it fits into the left hole.

- When the casing becomes soiled, clean it with a soft dry cloth moistened with mild detergent solution.
- Never use abrasive cleansers or chemical solvents, as they may deform the casing.
- Make sure not to splash water on the unit. This unit is not waterproof.
- Listening with this unit at high volume may affect your hearing. For traffic safety, do not use this unit while driving or cycling.
- Under certain circumstances, especially when the air is very dry, it is not uncommon to experience a discharge of static electricity, or shock, when your body comes in contact with another object, in this case the ear buds touching your ear(s). The energy from this natural discharge is extremely small and is not emitted by your product but rather a natural environmental occurrence.
- Depending on the strength of radio signals, the TUNE (tuning) indicator may not light up even if a broadcast is being received. Furthermore, the indicator may light up incorrectly due to extraneous noise even when a broadcast is not being received. Use the TUNE indicator as a reference.

Notes on batteries

- When the sound become weak, pls use Ac Power charge the rechargeable battery.
- When long time not use the radio, take out the battery from the unit.

Federal Communications Commission (FCC) Statement

This device complies with part 15 of the FCC Rules. Operation is subject to the following two conditions: (1) This device may not cause harmful interference, and (2) this device must accept any interference received, including interference that may cause undesired operation.

Note: This equipment has been tested and found to comply with the limits for a Class B digital device, pursuant to part 15 of the FCC Rules. These limits are designed to provide reasonable protection against harmful interference in a residential installation. This equipment generates, uses and can radiate radio frequency energy and, if not installed and used in accordance with the instructions, may cause harmful interference to radio communications. However, there is no guarantee that interference will not occur in a particular installation. If this equipment does cause harmful interference to radio or television reception, which can be determined by turning the equipment off and on, the user is encouraged to try to correct the interference by one or more of the following measures:

- Reorient or relocate the receiving antenna.
- Increase the separation between the equipment and receiver.
- Connect the equipment into an outlet on a circuit different from that to which the receiver is connected.
- Consult the dealer or an experienced radio/TV technician for help.

Warning: Changes or modifications made to this device not expressly approved by SHENZHEN XINJIE YITUO SCIENCE & TECHNOLOGY CO.,LTD may void the FCC authorization to operate this device.

Note: The manufacturer is not responsible for any radio or TV interference caused by unauthorized modifications to this equipment. Such modifications could void the user's authority to operate the equipment.