

Smart Watch

User manual



Sleep Monitoring



Intelligent Anti-lost



Calls Reminder



Health Data



Short Message Reminder



WeChat Reminder



Smart Alarm Clock



Thermal Analysis



Steps Detection



Remote photographing

Welcome to use smartwatch, please wear it, you can enjoy the following services:

Firstly, please scan the two-dimensional code to install the appropriate APP for your IOS or Android device.

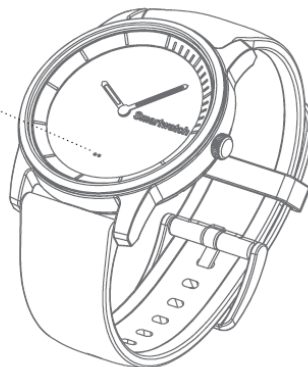


Android



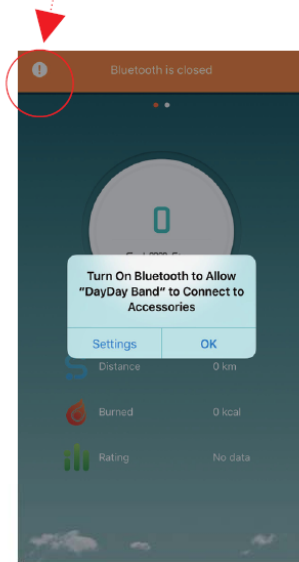
IOS

Indicator light

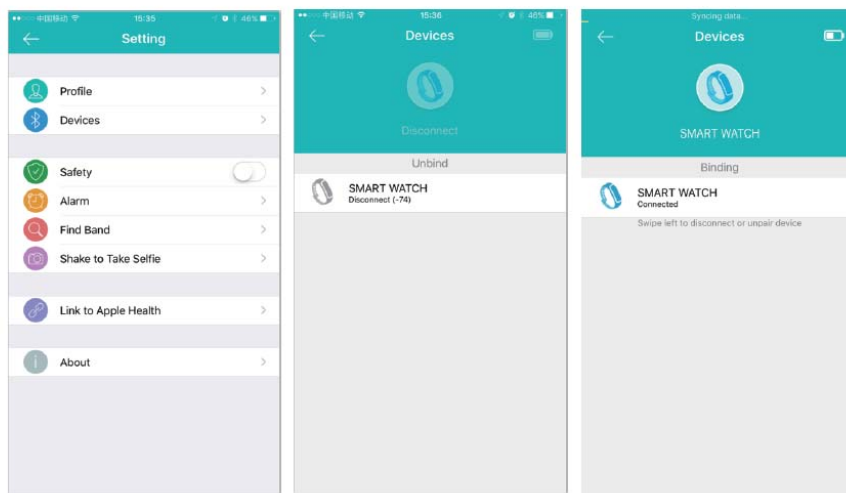


Open "dayday band",after pop-up the following dialogue box, click "set up".Then open the bluetooth of your device,then back to "dayday band" and set up.

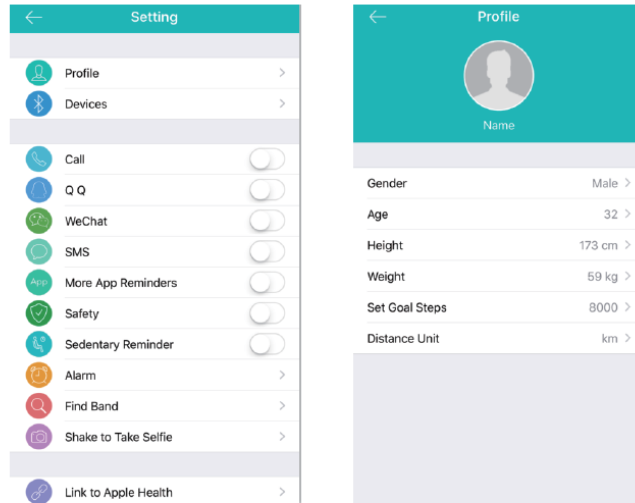
PS:the operating screens of IOS and Android have some difference,the functions are same.The following operation is the example of IOS.



Choose "my device",then click "SMART WATCH" to connect.



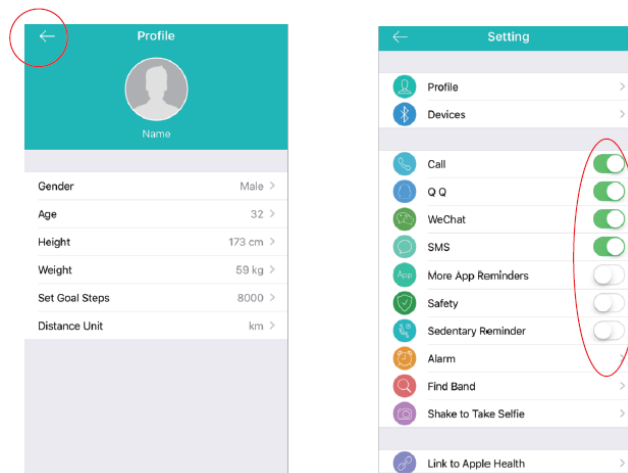
Choose "personal setting", please print in the information according to your actual situation and target.



Click the left arrow on upper left corner, back to the setting menu:
Choose the reminder function which you need, open the function according the prompt.

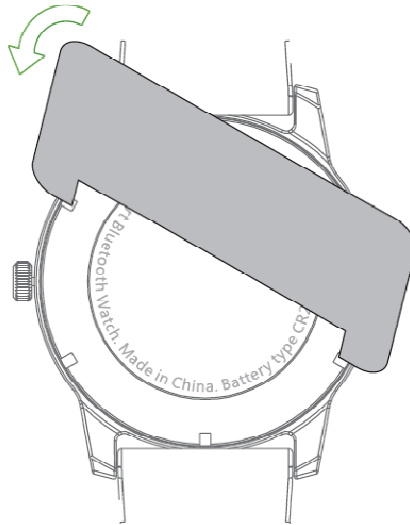
PS:1.the screen in Android OS would have some difference,the basic functions are totally same.

2.After opening "Intelligent Anti-lost",when smart watch disconnects with your mobile phone,the prompt box of "device disconnected" will forced eject on your phone screen,If you don't need the prompt, please close the "Intelligent Anti-lost".



When and How to replace the battery.

When two indicator lights on your smart watch flash at the same time or the APP prompts "Low Battery". Please replace the smart watch battery. Please aim the card slots under smart watch by the attached lid opening card, Rotate counterclockwise and open the caseback to replace battery.



Attention

- 1.This smart watch is waterproof 30 M, you could swim in the pool when wearing it, do not wear it when bathing in hot water and entering the hot and humid environment to avoid water vapor entering inside the watch.
- 2.The Bluetooth battery type used in smart watch is 2032 button batteries, do not use other type to replace it.
- 3.When replacing quartz movement battery used in the smart watch, please replace it in the places with qualified personnel of repairing watches. Please don't disassemble it by yourself to avoid touching precision parts around.

FCC Statement

This equipment has been tested and found to comply with the limits for a Class B digital device, pursuant to part 15 of the FCC rules. These limits are designed to provide reasonable protection against harmful interference in a residential installation. This equipment generates, uses and can radiate radio frequency energy and, if not installed and used in accordance with the instructions, may cause harmful interference to radio communications. However, there is no guarantee that interference will not occur in a particular installation. If this equipment does cause harmful interference to radio or television reception, which can be determined by turning the equipment off and on, the user is encouraged to try to correct the interference by one or more of the following measures:

- Reorient or relocate the receiving antenna.
- Increase the separation between the equipment and receiver.
- Connect the equipment into an outlet on a circuit different from that to which the receiver is connected.
- Consult the dealer or an experienced radio/TV technician for help.

To assure continued compliance, any changes or modifications not expressly approved by the party.

Responsible for compliance could void the user's authority to operate this equipment. (Example- use only shielded interface cables when connecting to computer or peripheral devices).

This equipment complies with Part 15 of the FCC Rules. Operation is subject to the following two conditions:

- (1) This device may not cause harmful interference, and
- (2) This device must accept any interference received, including interference that may cause undesired operation.

RF warning statement:

The device has been evaluated to meet general RF exposure requirement.
The device can be used in portable exposure condition without restriction.