

T6 Smart Watch User Manual



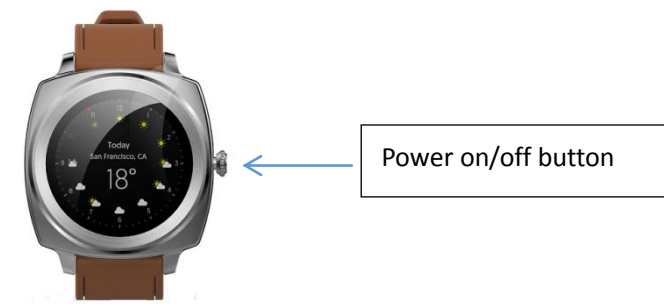
Thank you for choosing our product!

To have a comprehensive understanding and using this device, to know all the features and simple operation method, please read this manual first.

This equipment is mainly matching with smart phone via bluetooth connection .firstly you need to download the “MediaTek SmartDevice” APP in your cell phone, and then connect the bluetooth of the watch and the cell phone .once the connection is successful, you can sync the date and time in the phone, also you can sync the data in the watch into the APP in the cell phone. The detail of the bluetooth connection please refer the below point 4.

Our company reserve the right of modify the content of the manual without prior notice.

1. Functional Buttons



2. Power on/off

Power on: Long Press the power on/off button for 3 seconds

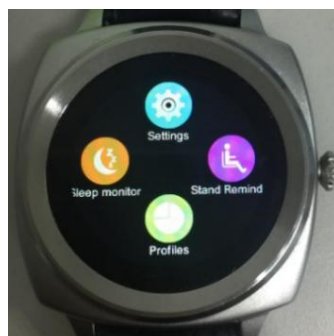
Power off: Long Press the power on/off button for 3 seconds

3. Main Menu

Slide the screen to the left to enter into the main menu



Slide up/down to shift the menu



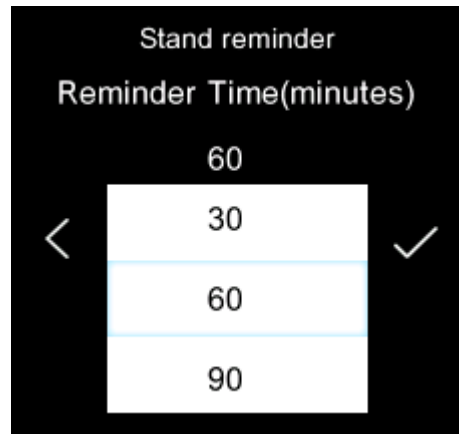
Click the icon to enter into the funtional mode

Slide from left to right to back to the menu interface

4. Major Functions

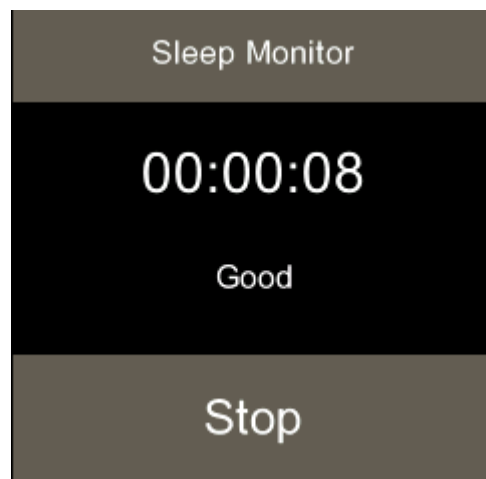
1. stand reminder:

Find the “stand reminder” on the main menu, click to start setting, select the reminder time(minutes),as shown below:



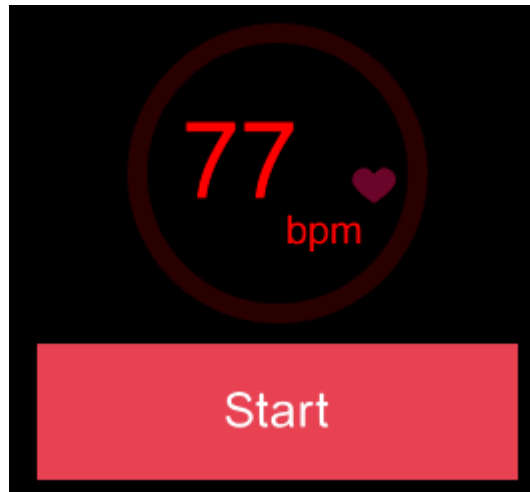
2.Sleep monitoring:

Firstly, wearing the smart watch on your hands, find the “sleep monitoring” on the main menu, click “start”,the smart watch will start to monitoring your sleep quality according to your sleep time and vibration amplitude, as shown below:



3. Heart Rate Monitoring

Firstly, wearing the smart watch on your hands, Find the “heart rate” on the main menu, the smart watch will start to monitor your heart rate, as shown below:



4. Alarm clock:

click the "+" to add the alarm setting

5. Incoming message alert

Connect the watch and the mobile phone via Bluetooth. When the mobile phone receives incoming message, the message will be pushed to the watch with message notification.

6. Incoming call alert

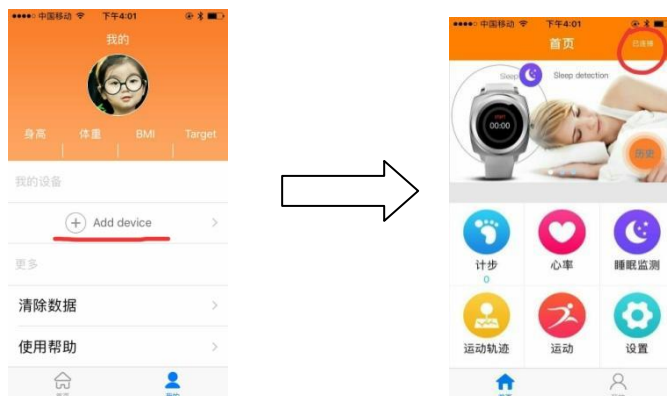
Connect the watch and the mobile phone via Bluetooth. When the mobile phone receives incoming call, the call will be pushed to the watch, with incoming ringtone .

5. Connect to Bluetooth

1) turn on the Bluetooth of the smart watch (setting -> open Bluetooth)

2). Turn on the Bluetooth of your smart phone, enter into the Bluetooth notification application APP binding menu

Step 1: Click "+" of your smart phone, the phone will automatically search for the nearby Bluetooth device, find the watch name "T6" and start pairing, after pairing successfully, it will appear on the right corner of your smartphone showing the device has being connected successfully, as shown below:



Step two: find the BT connection icon of the smart watch, click “search new device”, find the device name of your smart phone to start pairing, once pairing successfully, there will be a notification showing the device has been connected

6. Product Specification Sheet

Basic Information	Dimension	43.0*43.0*12.5mm
	Weight	55g
	Watchband Type	Leather
HW Configuration	Chipset	MT2502C
	Main Frequency	260MHZ
	Display	1.2"(Round)IPS
	Resolution	240*240
	Memory	64Mb+64Mb
	Camera	NO
	2G Band(MHz)	NO
	BT	BT2.3/BLE 4.0
	WIFI	NO
	GPS	NO
	Battery	220mAh Li-polymer (4.2V)
	Stand-by Time	120Hrs
SW Configuration	OS	Nucleus
	Language	English
	Audio Player	MIDI/MP3
	Engineering Mode	Yes
MD Configuration	Button	Power on/off
	Speaker	Yes
	MIC	Yes
	Camera	N/A
	Vibrator	Yes
	Watchband Type	TPU
Feature	Dynamic Heart Rate Monitoring	Yes
	ECG Monitoring	No

	Blood Pressure Monitoring	No
	Sedentary Reminder	No
	Sleep Monitoring	Yes
	GPS/WIFI/LBS precise location	No
	Proximity Sensor	No
	Light Sensor	No
	Gravity Sensor	Yes
	Gyro	No
	Compass	No
Connector	RF Test Connector	Yes
	SIM Card Slot	No
	I/O Port	No
	Audio Jack	No
Accessory	USB Cable	Yes
	Charger	No
	Giftbox	Yes

7. Notifications:

1、Support devices which with Bluetooth 2.3/4.0;

2、Bluetooth Connection:

A) Please make sure the bluetooth of mobile phone and the watch is turned on. If Bluetooth connection icon blinks, the watch's Bluetooth is turned on and is ready. If the icon is always on, Bluetooth connection is OK. If there is no bluetooth icon, bluetooth is turned off.

B)When searching Bluetooth, please make sure the watch has not been bind by another account;

C)When searching Bluetooth, please make sure the watch and mobile phone are nearby.

3、If the watch is not receiving message notification, please make sure the APP is logged in and message notification function is turned on;

4、When Bluetooth connection abnormal and unable to enter the APP. Please try to enter into the Application Management of the Mobile phone and clear the cache data of the App.

5、if watches and cell phone bluetooth connection often disconnected automatically. Please check if the phone is equipped with a software which will clean up the background program and clean up the App by mistake. You need to “lock” the App in the phone ,or unload the firmware to make sure the APP can stable running in the background.

6.If one watch has been bind with one account, it cannot be bind with another account unless it is unbind with the current account;

8. Warranty

1. If it appears quality problems caused by manufacturing, materials, and design within one year (since the day of purchase) , we will offer free warranty. Premise is using normally and correctly.

2. About the fault caused by the user personal reasons, we don't offer free warranty, as follows:

1). Disassemble or refit the product.

2). Caused by immodesty drop

3). All artificial damage or misuse (such as: the external force shatter, scratch damage of peripheral components, etc.), all these are beyond the scope of the warranty.

If you met problems during use, please contact with our customer service

This device complies with Part 15 of the FCC Rules. Operation is subject to the following two conditions:(1) this device may not cause harmful interference, and (2) this device must accept any interference received, including interference that may cause undesired operation.

Note: This equipment has been tested and found to comply with the limits for a Class B digital device, pursuant to part 15 of the FCC Rules. These limits are designed to provide reasonable protection against harmful interference in a residential installation. This equipment generates, uses and can radiate radio frequency energy and, if not installed and used in accordance with the instructions, may cause harmful interference to radio communications. However, there is no guarantee that interference will not occur in a particular installation. If this equipment does cause harmful interference to radio or television reception, which can be determined by turning the equipment off and on, the user is encouraged to try to correct the interference by one or more of the following measures: —Reorient or relocate the receiving antenna. —Increase the separation between the equipment and receiver. —Connect the equipment into an outlet on a circuit different from that to which the receiver is connected. —Consult the dealer or an experienced radio/TV technician for help. Caution: Changes or modifications not expressly approved by the party responsible for compliance could void the user's authority to operate the equipment.