

STOP Fast wireless charging works with most standard thickness protective cases made of plastic. Remove any metal case or metal plate adhered to the back of your phone prior to charging. Metal cases and metal plates will cause interference that could damage your device.

MagSafe® compatible wireless charge pad works with all Qi™ enabled smartphones including Android™ and will align iPhone® 12 or later magnetically. MagSafe® compatible cases recommended.

WARNING! IMPORTANT CARE AND SAFEGUARDS

Failure to follow the safety instructions can lead to fire, electrical shock, personal injury or property damage and damage to this product

- Do not use power bank for anything other than intended use
- This product is not intended to charge batteries or other devices
- If you have an electrical device, such as a pacemaker, consult a physician before using this product
- Keep all foreign objects, small metal pieces and debris away from charging pad surfaces at all times
- Make sure charging surfaces are completely clear prior to use and at all times
- Always use the specified power source and voltage
- Do not use a voltage converter / travel adapter
- Always place the power bank on a sturdy and level surface
- This product contains small parts and is not suitable for children
- Do not expose to rain, water or excessive humidity
- If device becomes wet, immediately unplug from power source
- Keep power bank away from heat sources and direct sunlight
- Always use this product in operating temperatures of 32°F (0°C) - 95°F (35°C)
- Do not handle power bank, USB power cord or power source with wet hands
- Do not let dust or debris accumulate on power bank or cord
- Do not use the power bank if it has been dropped or damaged
- Never take this device apart and always get repaired by a qualified technician
- Always unplug when not in use for a long period of time

iPhone and MagSafe are registered trademarks of Apple Inc., registered in the U.S. and other countries. Android is a trademark of Google Inc. The 'Qi' symbol is a trademark of the Wireless Power Consortium.

This device complies with part 15 of the FCC Rules. Operation is subject to the following two conditions: (1) this device may not cause harmful interference, and (2) this device must accept any interference received, including interference that may cause undesired operation. Any changes or modifications not expressly approved by the party responsible for compliance could void the user's authority to operate the equipment. NOTE: This equipment has been tested and found to comply with the limits for a Class B digital device, pursuant to Part 15 of the FCC Rules. These limits are designed to provide reasonable protection against harmful interference in a residential installation. This equipment generates, uses and can radiate radio frequency energy and, if not installed and used in accordance with the instructions, may cause harmful interference to radio communications. However, there is no guarantee that interference will not occur in a particular installation. If this equipment does cause harmful interference to radio or television reception, which can be determined by turning the equipment off and on, the user is encouraged to try to correct the interference by one or more of the following measures: -- Reorient or relocate the receiving antenna. -- Increase the separation between the equipment and receiver. -- Connect the equipment into an outlet on a circuit different from that to which the receiver is connected. -- Consult the dealer or an experienced radio/TV technician for help. The device has been evaluated to meet general RF exposure requirement. The device can be used in portable exposure condition without restriction.

FCC ID: 2AMG5-STG7060KB



SAVE THESE INSTRUCTIONS FOR FUTURE REFERENCE

Any questions, please call customer service at 1-800-254-0111 2434 Research Dr., Livemore, CA 94550
8:30am - 5pm, PST, Monday - Friday, or email us at customerservice@jlrgear.com © 2024 JLR Gear - Made in China

Wireless Charging Magnetic Battery



Product Instruction Manual
Please read carefully prior to use.

Charge completely prior to initial use.

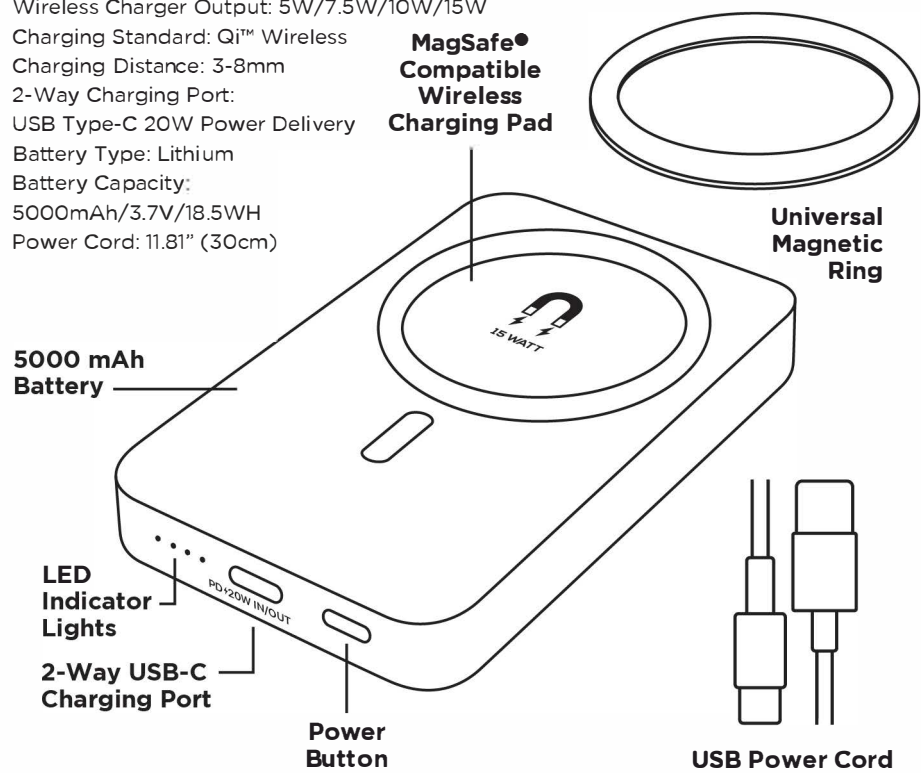


Please call customer service at 1-800-254-0111 with any questions



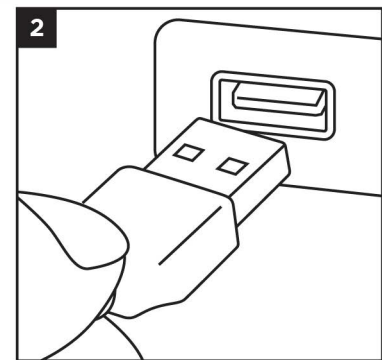
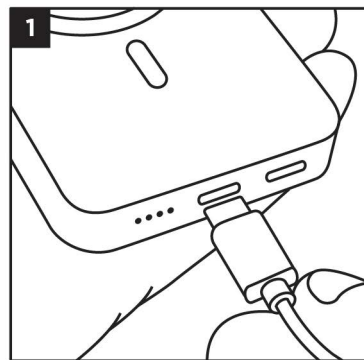
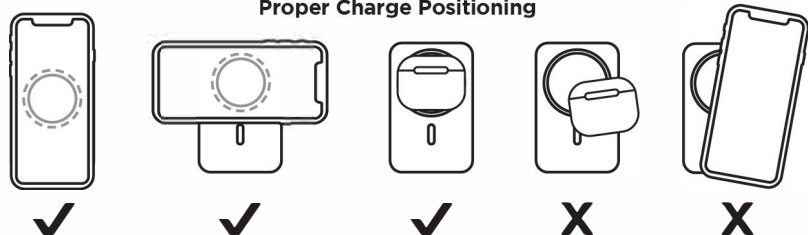
Specifications

Input: 5V 2A / 9V 2A
Wireless Charger Output: 5W/7.5W/10W/15W
Charging Standard: Qi™ Wireless
Charging Distance: 3-8mm
2-Way Charging Port:
USB Type-C 20W Power Delivery
Battery Type: Lithium
Battery Capacity:
5000mAh/3.7V/18.5WH
Power Cord: 11.81" (30cm)



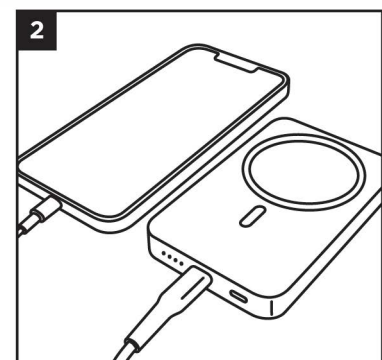
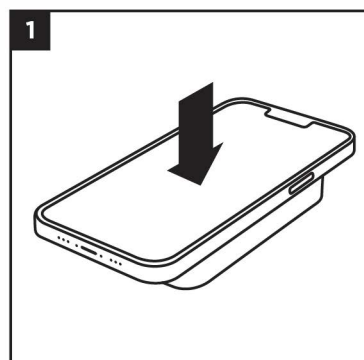
Use Tip: Portable charger is perfect for everyday use. Lay flat on surface to use as a wireless charging pad. Unplug and use as a backup battery that recharges smartphone up to 1.5x on-the-go.

Proper Charge Positioning



Charging Power Bank

1. Connect USB cable to 2-way fast charging USB-C port on power bank.
2. Connect to USB power source (not included). For faster charging speeds, connect to 9V / 2 amp USB power source.
3. LED lights will indicate charging progress.



Charging Your Device

1. Place smartphone or other Qi™ enabled device in the center of the charger as shown to charge wirelessly.
2. MagSafe® compatible grip for iPhone® 12 or later.
3. Use universal magnetic ring adapter for Android™, earlier iPhone models, thick cases and extra grip.
4. Connect device to 2-way USB-C port for 20 watt power delivery fast charging.
5. LED lights will indicate device is charging. Your smartphone will display the charging progress on screen.