

Model : VRotica1
Battery : 3000 mAh
Made in China

VROTICA

CE   FCC 5V $\overline{=}$ 2A

www.vroticaheadset.com
contact@vroticaheadset.com
VRotica LTD, London UK

“VRotica User Manual”



Welcome to the VR Adult revolution!

VRotica is the worlds first adult content specific all-in-one VR headset. No phone, no computer, no cables, just turn it on and you are good to go!

The VRotica headset allows you to watch adult content made specifically for VR. You can use VRotica offline to watch videos in your Library, or you can set up your account online to access top of the range adult content from the video store.





1- OK Button

2-Back Button

3- Power Button

4-Volume Up Button

5- Volume Down Button

6-Recenter Button

7- USB Charge Port

8-Pupil Distance Adjuster

9- Focus Distance Adjuster

10- Head Straps

11- Headphone Jack

Set Up

The VRotica headset is an easy to use all-in-one VR headset. Turn it on by holding down the power button and you are good to go!

The VRotica headset comes with a number of free videos for all users to sample. These videos can be found in the Library. If you connect the VRotica headset to a wifi network you will be given a temporary unique code to set up your account.

Visit the www.vroticaheadset.com website and set up your account by following the instructions under the Sign Up button.

After setting up your account your headset will recognise you and you will be able to access the video store and purchase and download videos.



How It Works

Hold the power button(3)
down for 2-3 seconds
to turn on the device.



Place the VRotica
headset on your head.



Adjust the lenses with
the two lense settings(8, 9)
at the top of the headset to
get the best visual setting
that suits you.



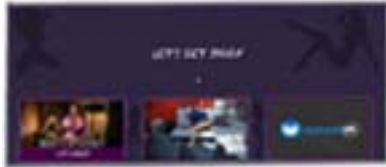
You will see a cursor in the center of the screen, move your head around, up and down to place the cursor on any button.



Tap the OK button(1) on the right side of the headset to select your action. The Back Button(2) on the right side of the headset will take you back to the previous screen where possible.



Select the Get Jiggy Button to access your library where you will find your preloaded videos. Select any video to start watching.



Navigate the VRotica interface to the wifi icon on the main menu. When selected choose your network and enter your password to go live. Your device will display a unique device ID that will be active for a while.



Take off your VRotica headset,
go to www.vroticaheadset.com and click on the
Sign Up button. Follow the instructions to create your
account and connect your device to your account.

Once you have set up your account you can browse
through the tabs in the Get Jiggy screen, purchase
videos and download them to your device. Once you
have purchased a video you will always own that video,
you can download it and delete it from your device as
many times as you like.



Watching a video

When watching a video, tapping the action button will display the media player on screen and you can pause/play/rewind/fast forward the video on screen. You can toggle 3D view via the 3D button if the video supports 3D.



The back button(2) will take you back to the previous screen.

The Volume Up(4) and Volume Down(5) buttons on the left side of the headset are used to adjust the volume of the video.



You will need headphones inserted into the headphone jack(11) to hear the audio from the videos. If you have to physically move while using the VRotica headset you

can use the Recenter button(6) to reset the view point of the screen.



Troubleshooting

In the event of your device showing unusual behaviour, the first thing you should do is turn it off, make sure it is charged to at least 20% and turn it back on again.

If your device continues to display unusual behaviour restart it and while it is starting up hold down the Recenter(6) button. This will display a menu which will allow you to revert the system to a working version.

Use the Volume Up(4) and Volume Down(5) keys to navigate the menu.



Using VRotica, Safety and Cleaning

The VRotica headset contains content of an adult nature and is intended for users aged 18 or over. The VRotica headset is not appropriate for children or minors.

The VRotica headset includes many components that can be damaged from exposure to extreme heat, extreme cold and liquids. Store in a dry space and keep as close to room temperature as possible.

The VRotica headset can be charged with the USB cable provided in the box or any other industry standard micro USB cable. VRotica LTD is not responsible for any problems you may encounter with third party micro USB cables.

We advise you clean the lenses periodically with a clean cloth, similar to cleaning glasses.

Warning Statement

This device complies with part 15 of the FCC Rules. Operation is subject to the following two conditions: (1) This device may not cause harmful interference, and (2) this device must accept any interference received, including interference that may cause undesired operation.

Any Changes or modifications not expressly approved by the party responsible for compliance could void the user's authority to operate the equipment.

Note: This equipment has been tested and found to comply with the limits for a Class B digital device, pursuant to part 15 of the FCC Rules. These limits are designed to provide reasonable protection against harmful interference in a residential installation. This equipment generates uses and can radiate radio frequency energy and, if not installed and used in accordance with the instructions, may cause harmful interference to radio communications. However, there is no guarantee that interference will not occur in a particular installation. If this equipment does cause harmful interference to radio or television reception, which can be determined by turning the equipment off and on, the user is encouraged to try to correct the interference by one or more of the following measures:

- Reorient or relocate the receiving antenna.
- Increase the separation between the equipment and receiver.
- Connect the equipment into an outlet on a circuit different from that to which the receiver is connected.
- Consult the dealer or an experienced radio/TV technician for help.

The device has been evaluated to meet general RF exposure requirement. The device can be used in portable exposure condition without restriction.