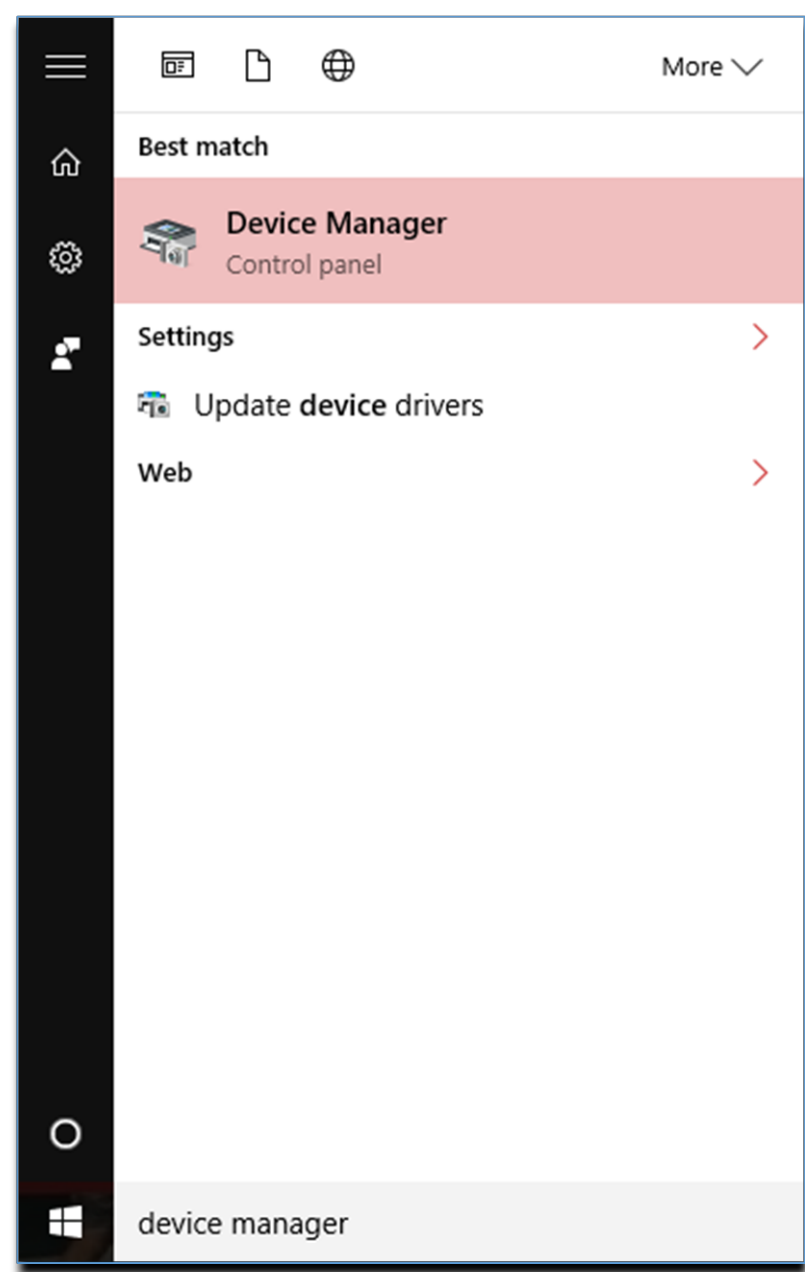


Pregame Solutions Bluetooth Telestration Remote



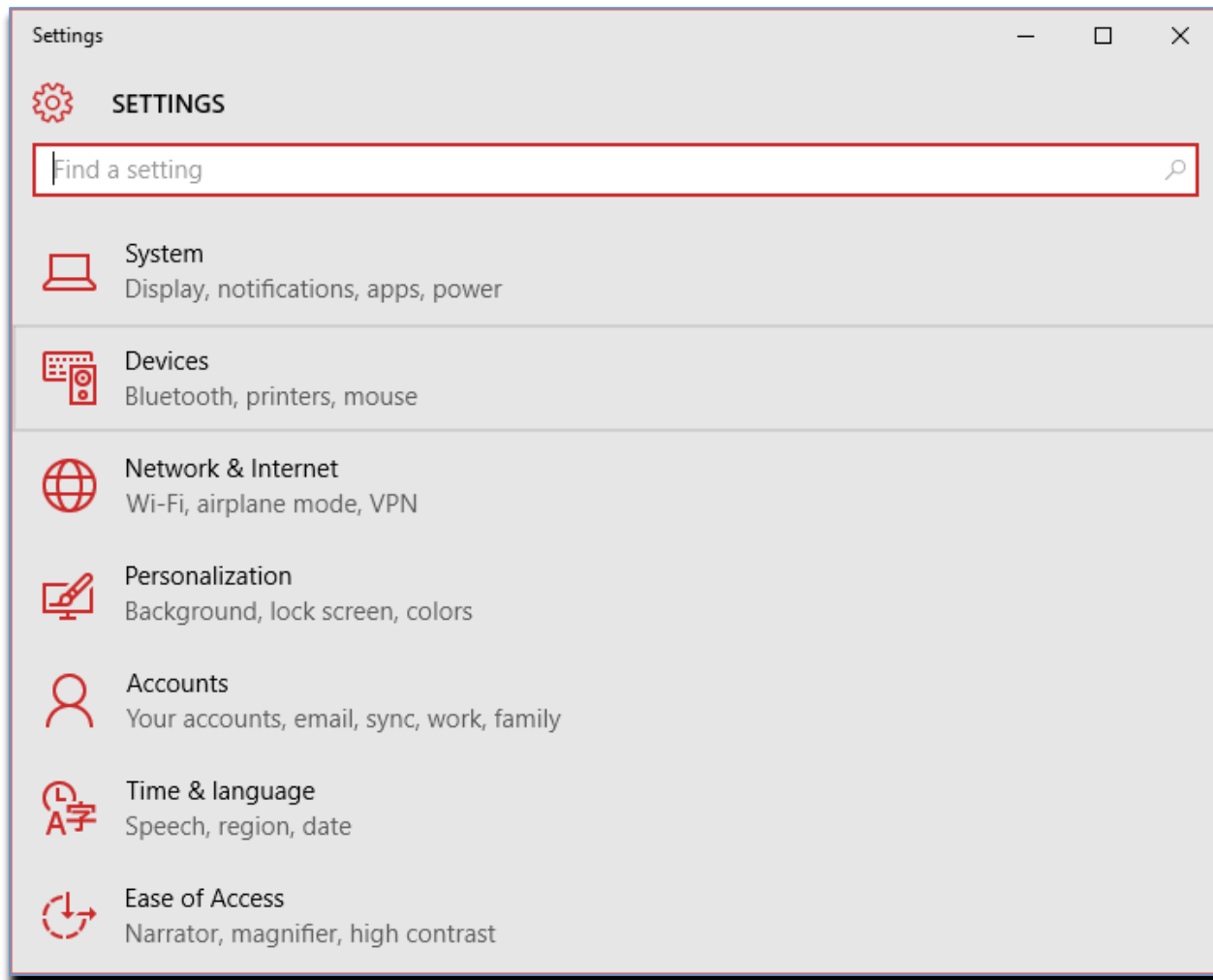
Pairing the Bluetooth remote with your computer.



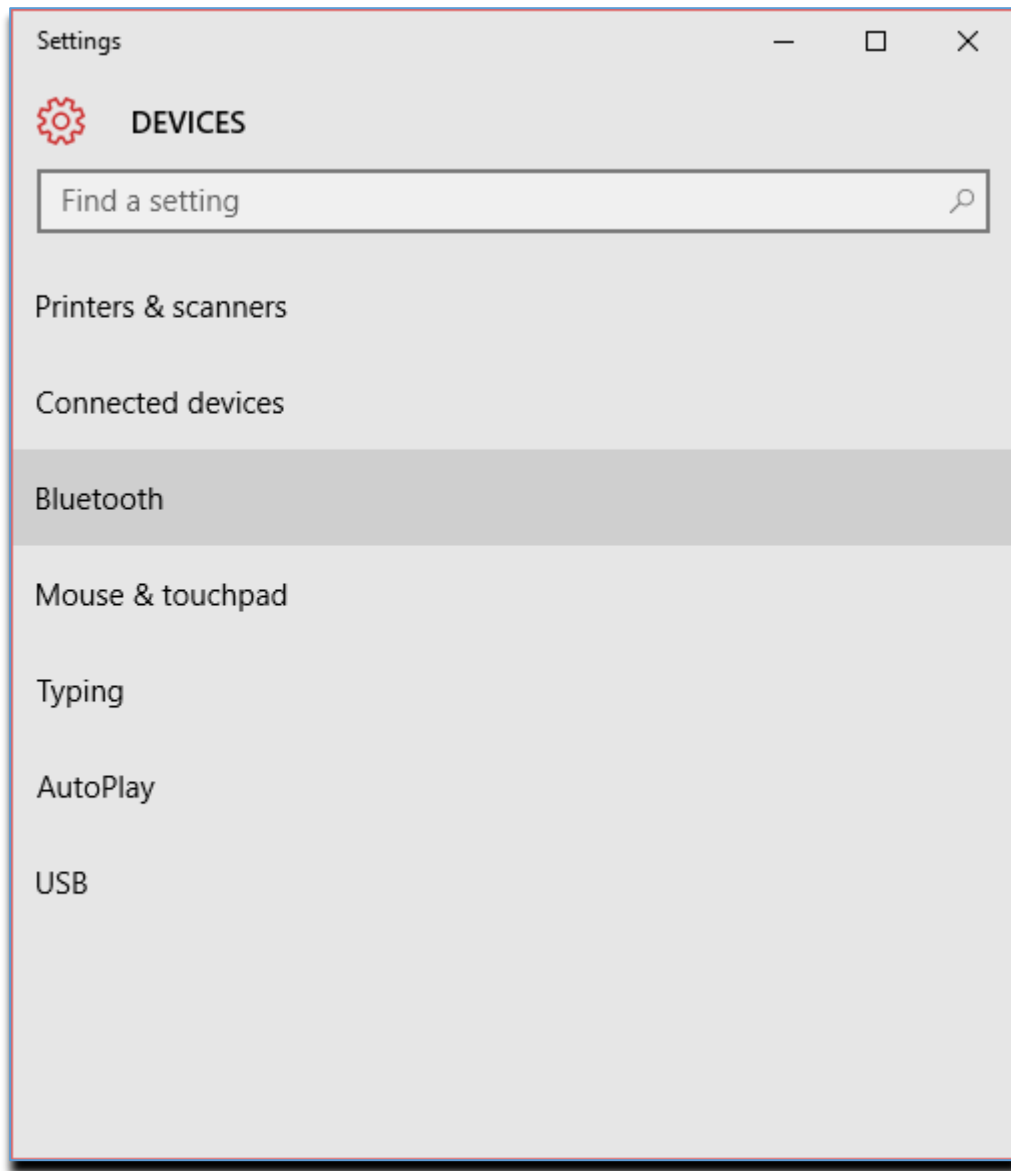
Left click on the **Window** icon in the lower left.

Start typing **Device Manager**, and it will appear under Best Match at the top.

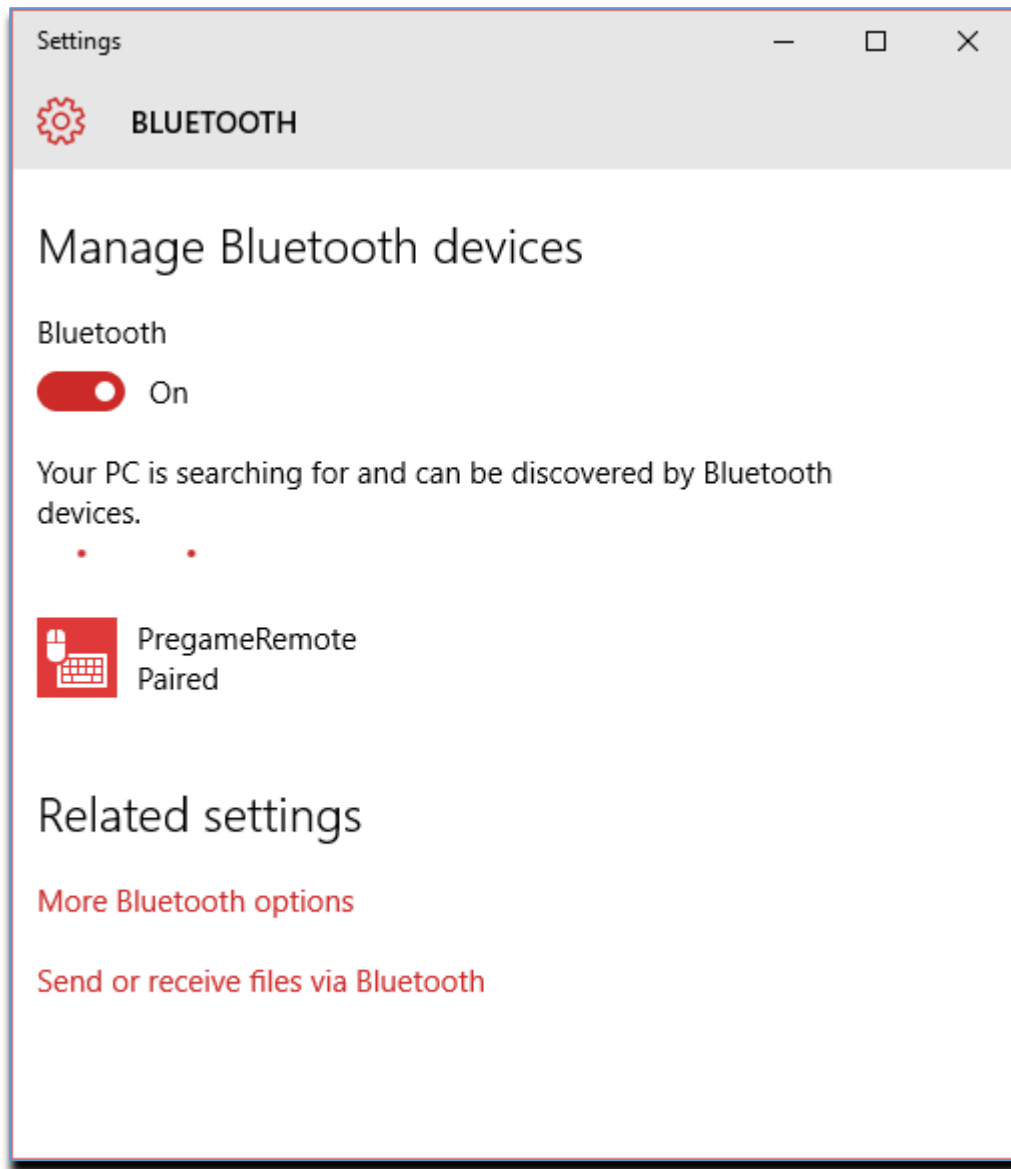
Left click once on the highlighted- **Device Manger**.



Left click on **Devices** (*Bluetooth, printers, mouse*).



Click on **Bluetooth**.

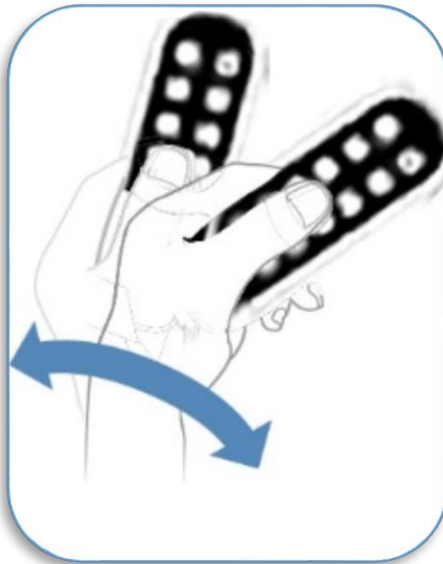
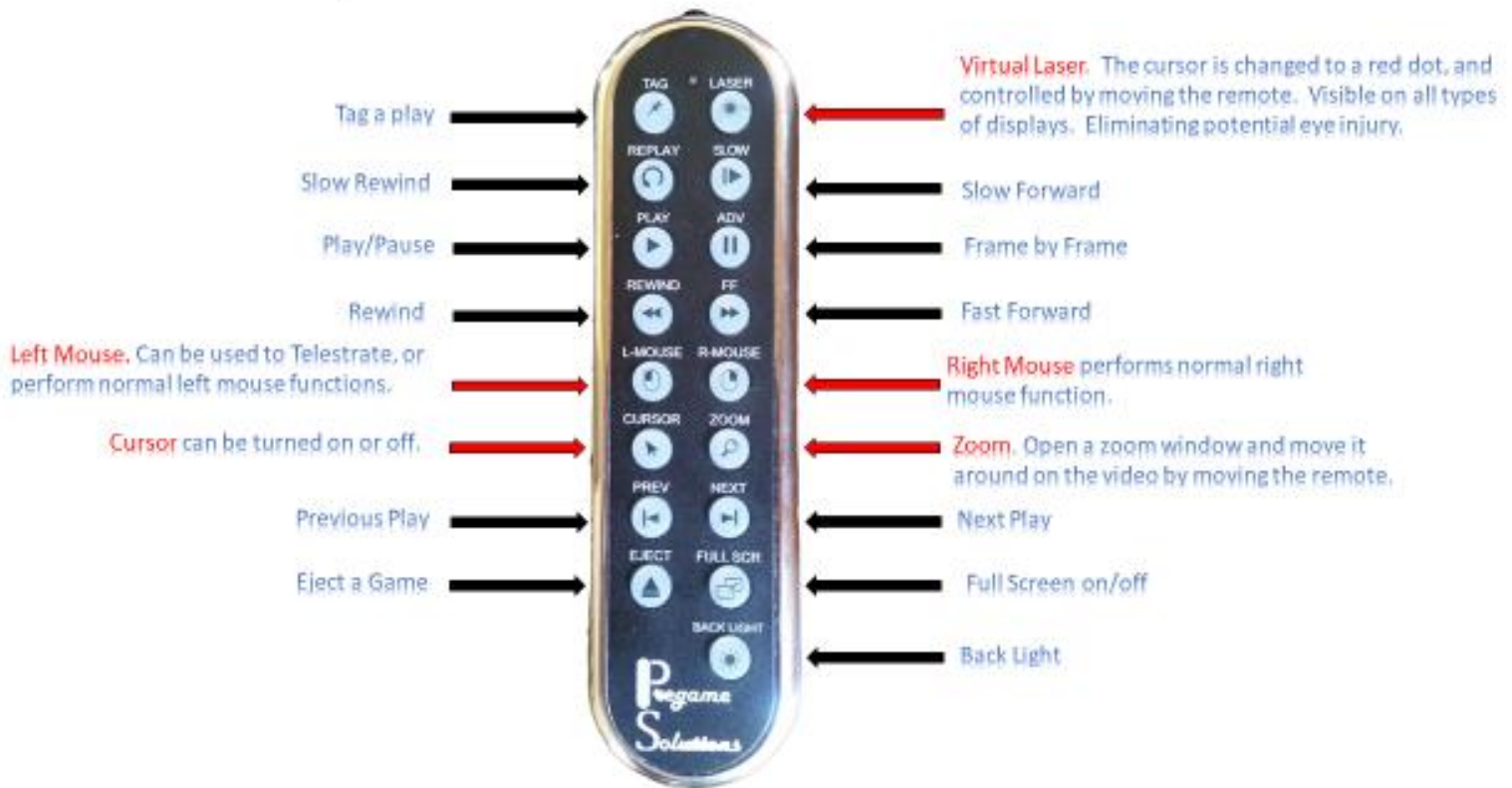


Turn on Bluetooth if it is not already on.

Place 2-AAA batteries in the remote.
The Laser button will blink rapidly, signaling that it is discoverable and ready to be paired.
It will automatically be found by the computer, and show up as **PregameRemote**.

Click on **PregameRemote** and select the option to **pair**.
**It will take short amount of time to pair the first time, and will connect immediately the next time you want to use it.
Once paired, the Laser button will blink slowly, signaling that the remote is paired.

PegameSolutions Bluetooth Telestration Remote



Do not Point to the screen and move your arm to control the Telestration or cursor. It will move very slowly.

The best way to control the Telestration and cursor is to hold the remote by your side, and use your wrist to rotate the remote. It will track much like you are used to with a conventional mouse.

At times, you may need to re-center the cursor to get better control. If you are already using the laser, simply point the remote to the center of the screen and press the laser button twice, and the red laser will appear in the center of the screen. If you are telestrating, point the laser at the center of the screen and press the laser button once.

Operating the Remote

TAG -Pressing this button will toggle “tagging” the play.

LASER -This button will toggle turning on the Virtual Laser, a red dot that can be seen on any type of monitor, from any angle. First press the cursor button to activate control, then point the remote at the center of the display and press the laser button. This will center the laser on the screen. You can even use the laser while watching in a playback mode.

There is no need to hold the button down. When finished, press again to toggle off.

Pressing the left mouse button to Telestrate, will turn the laser off. When done telestrating, point the Remote at the center of the screen and press the laser button once.

REPLAY -Press and hold the key to activate slow reverse. Release when done.

SLOW -Press and hold the key to activate slow forward. Release when done.

PLAY -This button will toggle between play and pause. Press once to activate.

ADV -Press this button once multiple times to step thru forward motion frame-by-frame. Do not hold the button down as it can fill up the buffer and take a few seconds to regain control of the remote.

REWIND -Rewind the film.

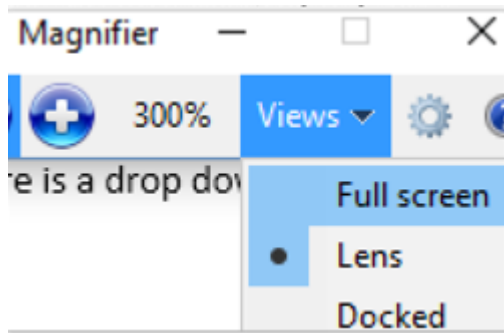
FF -Fast Forward the film.

LEFT MOUSE -This button is used for Telestration. While in fullscreen mode, pause the play, and press the “cursor” button to activate cursor control. Then move the remote with wrist motions to the desired position on the screen. Press and hold the left mouse button, and begin drawing. This button can be used as a normal left mouse click to perform any other normal actions. If trying to select a play or close a window, it’s sometimes easier to move to the spot, then turn off the cursor followed by a left mouse click. Unless you have a steady hand. ☺

RIGHT MOUSE -Use this as you would with a regular mouse.

CURSOR -Toggles the cursor movement on or off.

ZOOM - This will toggle a zoom window. First make sure that the Cursor is turned on. Once this window comes up you will see a small menu bar or magnifying glass on the screen. Click on the “views” drop down to select the zoom level. If you select Lens, the zoom window will follow the cursor.



PREV -Go to the start of the previous set of plays

NEXT -Go to the next Play.

EJECT -You must exit fullscreen mode to Eject from a playlist. Turn off the “Cursor” as well because it will be moved automatically to make the necessary selections. If multiple plays are loaded, It will eject the current playlist and activate the previous playlist. Once all playlists have been Ejected, the focus will move up to the games window. You can move up and down the list by Using the Prev and Next buttons. Click Play to load the list.

FULL SCR -Toggle in and out of Fullscreen.

BACKLIGHT -Lights up all of the buttons.

Federal Communication Commission Interference Statement

This equipment has been tested and found to comply with the limits for a Class B digital device, pursuant to Part 15 of the FCC Rules. These limits are designed to provide reasonable protection against harmful interference in a residential installation.

This equipment generates, uses and can radiate radio frequency energy and, if not installed and used in accordance with the instructions, may cause harmful interference to radio communications. However, there is no guarantee that interference will not occur in a particular installation. If this equipment does cause harmful interference to radio or television reception, which can be determined by turning the equipment off and on, the user is encouraged to try to correct the interference by one of the following measures:

- . Reorient or relocate the receiving antenna.
- . Increase the separation between the equipment and receiver.
- . Connect the equipment into an outlet on a circuit different from that to which the receiver is connected.
- . Consult the dealer or an experienced radio/TV technician for help.

FCC Caution: To assure continued compliance, any changes or modifications not expressly approved by the party responsible for compliance could void the user's authority to operate this equipment. (Example - use only shielded interface cables when connecting to computer or peripheral devices).

FCC Radiation Exposure Statement

This equipment complies with FCC RF radiation exposure limits set forth for an uncontrolled environment. This equipment should be installed and operated with a minimum distance of 0.5 centimeters between the radiator and your body.

This transmitter must not be co-located or operating in conjunction with any other antenna or transmitter.

The antennas used for this transmitter must be installed to provide a separation distance of at least 0.5 cm from all persons and must not be co-located or operating in conjunction with any other antenna or transmitter.