



AD-520 Dash Cam User Manual



©2017 All Right Reserved

D.04.07.17



AD-520
Dash Cam
User Manual

Table of Contents

	About this Guide	4
	FCC Statement	4
	WEEE Notice	4
	Notes on Installation.....	5
	Caution	5
1	Introduction	6
	1.1 Features	6
	1.2 Package Contents	6
	1.3 Product Overview.....	7
2	Getting Started	8
	2.1 Removable Battery.....	8
	2.2 Inserting the Memory Card	8
	2.3 Connecting to Power	9
	2.4 Powering the Dash Cam On / Off	9
	2.4.1 Auto Power On/Off.....	9
	2.4.2 Manual Power On/Off.....	9
	2.5 Mode Setting	10
	2.5.1 The Recording Screen.....	10
	2.5.2 Mode Switch	10
	2.5.3 Computer Connection	12
	2.6 Installing in Vehicles	13
	2.6.1 Mount to Windshield.....	13
	2.6.2 Adjust the Device Position.....	14
3	Specifications	15
4	Frequently Asked Questions.....	16

About this Guide

The content in this document is for information purpose and is subject to change without prior notice. We made every effort to ensure that this User Guide is accurate and complete.

However, no liability is assumed for any errors and omissions that may have occurred.

The manufacturer reserves the right to change the technical specifications without prior notice.

FCC Statement

This equipment has been tested and found to comply with the limits for a Class B digital device, pursuant to Part 15 of the FCC Rules. These limits are designed to provide reasonable protection against harmful interference in a residential installation. This equipment generates, uses and can radiate radio frequency energy and, if not installed and used in accordance with the instructions, may cause harmful interference to radio communications. However, there is no guarantee that interference will not occur in a particular installation. If this equipment does cause harmful interference to radio or television reception, which can be determined by turning the equipment off and on, the user is encouraged to try to correct the interference by one or more of the following measures:

- Reorient or relocate the receiving antenna.
- Increase the separation between the equipment and receiver.
- Connect the equipment into an outlet on a circuit different from that to which the receiver is connected.
- Consult the dealer or an experienced radio/TV technician for help.

This device complies with Part 15 of the FCC Rules. Operation is subject to the following two conditions: (1) This device may not cause harmful interference, and (2) this device must accept any interference received, including interference that may cause undesired operation.

FCC Caution: Any changes or modifications not expressly approved by the party responsible for compliance could void the user's authority to operate this equipment.

This equipment complied with FCC radiation exposure limits set forth for an uncontrolled environment.

This equipment should be installed and operated with minimum distance 20cm between the radiator & your body.

WEEE Notice

You must dispose of your waste equipment and/or battery by following the applicable take-back plan for the recycling of electronic equipment and/or battery.



This symbol on the product or on the packaging indicates that this can not be disposed of as a household waste. You must dispose of your waste equipment and/or battery by handling it over to the applicable take-back scheme for the recycling of electrical and electronic equipment and/or battery. For more information about recycling of this equipment and/or battery, please contact your city office, the shop where you purchased the equipment or your household waste disposal service. The recycling of materials will help to conserve natural resources and ensure that it is recycled in a manner that protects human health and environment.

Notes on Installation

1. Install the device near the rear-view mirror to obtain the best open-field view. Do NOT install the Dash Cam in a location that will obstruct your required driving view.
2. Make sure that the lens is within the wiping range of the windshield wiper to ensure a clear view even when it rains.
3. Do not touch the lens with your fingers. Finger grease may be left on the lens and will result in unclear videos or snapshots. Clean the lens on a regular basis.
4. Do not install the device on a tinted window. Doing so may damage the tint film.
5. Make sure that the installation position is not hindered by the tinted window.

Caution

- Use the authorized charger only.
- Never disassemble or attempt repair of this product. Doing so may damage the Dash Cam, cause electric shock and void your product warranty.
- Never short-circuit the battery.
- Exposing the Dash Cam to open flames can cause explosion.
- Due to local laws and vehicles safety considerations, do not manually operate the device while driving.
- Auto Drive Tech Corp. is NOT responsible for the loss of any data/content during operation.
- Before mounting, please check with the local DMV for the traffic laws of the location/method to mount appropriately.
- Audio recorded with the video may not be valid jurisdictional evidence; and it may be illegal to present such audio to the jury in some states.
- For some vehicles, DC power socket will keep the supply of power after the engine is turned off. To avoid car battery drain, please manually unplug the Dash Cam when the engine is turned off.

Before you start using the Dash Cam it is assumed that you agree to the above statements.

1 Introduction

Thank you for purchasing this advanced Dash Cam. This device is specifically designed for real time video and audio recording when driving.

1.1 Features

- Records UHD video in 4K resolution so you capture incidents in superbly Crisp, clear detail
- Bike mount: mount the device to a bicycle to use as an action cam. Battery will last 60 minutes after fully charged
- WiFi connect: Connect the device through WiFi with your smartphone or tablet for video viewing
- Easy sharing: download the video to your smartphone for Easy Sharing
- Quickly mounts to the windshield and captures all the details with continuous recording
- Auto redord on / off starts and stops recording with the power of the vehicle
- LED display provides easy access to dash cam status

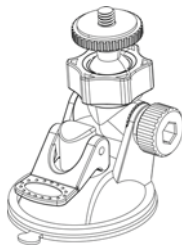
1.2 Package Contents

The package contains the following items. If there are any missing or damaged items, contact your dealer immediately.

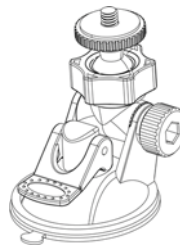
Dash Cam



Car Mount



Bike Mount



User Manual



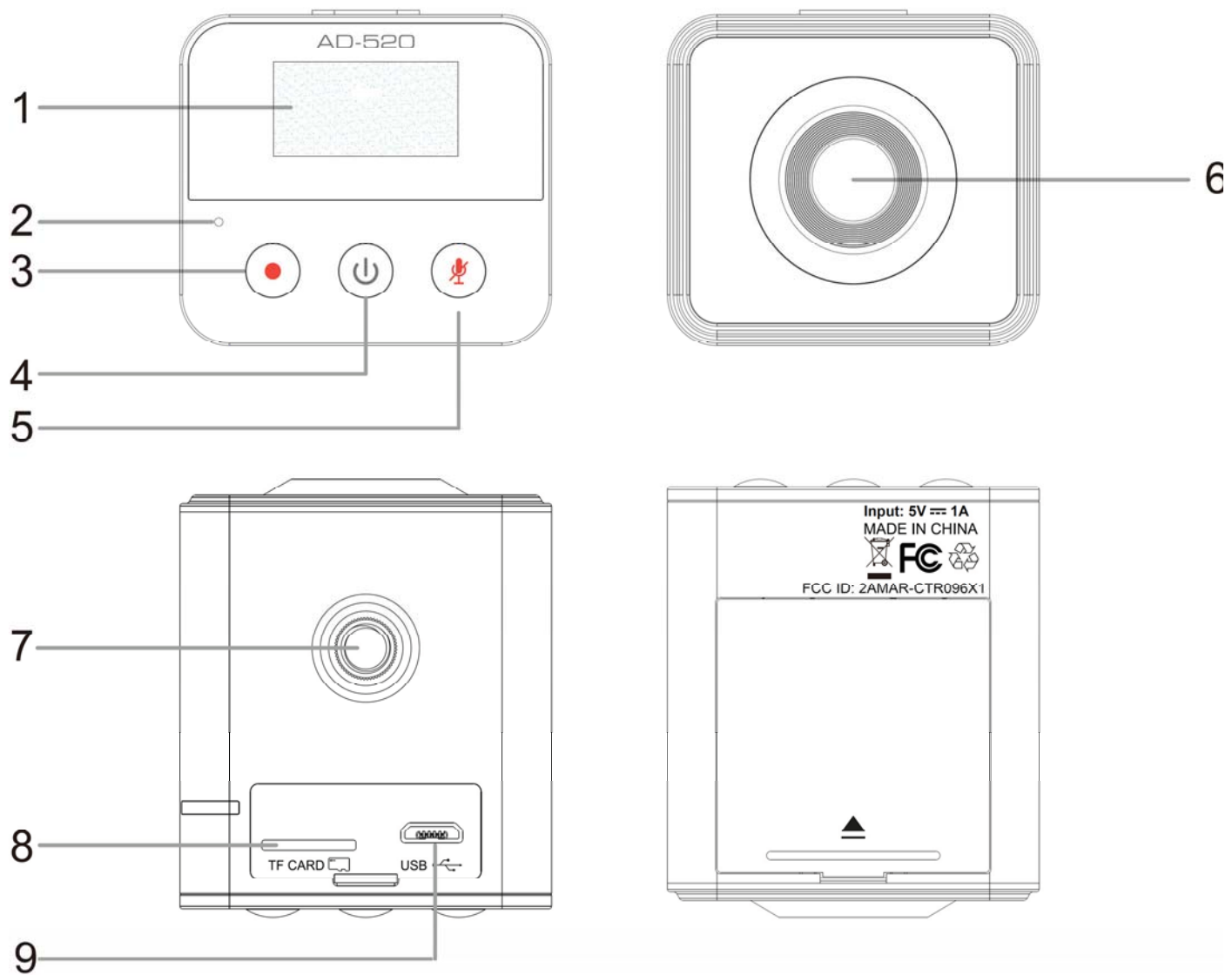
Quick start guide



USB cable with car adapter



1.3 Product Overview



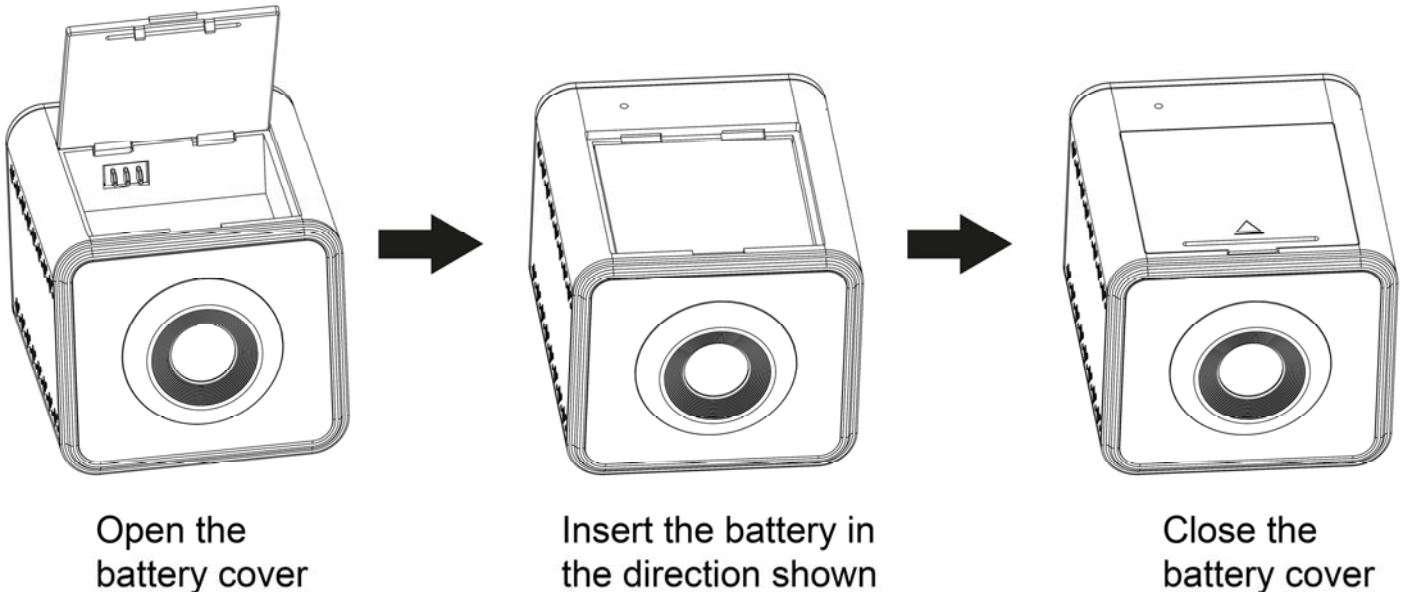
No.	Item
1	LED Panel
2	MIC
3	REC(OK)
4	Power button
5	Mute

No.	Item
6	Wide Angle Lens
7	Bracket Socket
8	Memory Card Slot
9	USB connector

2 Getting Started

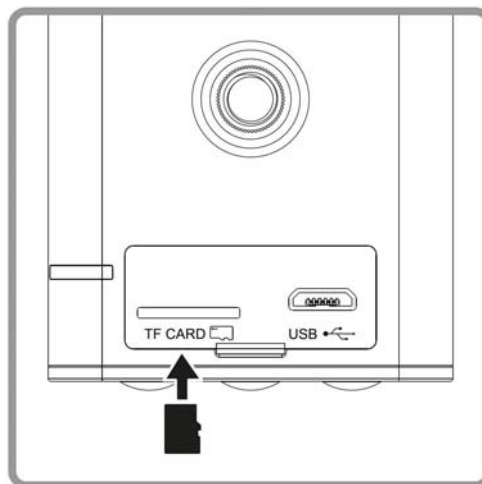
2.1 Removable Battery

When inserting the battery positive and negative direction not to pay attention to the machine upside, and light to go forward, in order to avoid damage to the machine.



2.2 Inserting the Memory Card

Insert the memory card with the gold contacts facing the big screen of the Dash Cam. Push the memory card until it clicks into place. (Use class 10 or above the micro SD cards for this Dash Cam; It is recommended to format the micro SD cards before the initial use.)



To remove the memory card:

Push the edge of the memory card inward until you hear/feel it click, then allow it to push out until you can remove it from the slot.

Note:

1. Do not remove or insert the memory card when the device is powered on. This may damage the memory card.
2. It is recommended to use a 16 or 32 GB, Class 10 speed or above micro SD card.
3. It is recommended to format the micro SD cards before the initial use.

2.3 Connecting to Power

Use only the supplied car adapter to power up the device and charge the built-in battery.

1. Connect one end of the car adapter to the USB connector of the Dash Cam.
2. Plug the other end of the car charger to the cigarette lighter socket of your vehicle. Once the vehicle engine is started, the Dash Cam automatically powers on.

Note:

- Please take note if the environment temperature reaches 115°F or above, the car adapter still can supply power to Dash Cam, but it may not charge the battery. This is characteristic of Lithium polymer battery and is not a malfunction.

2.4 Powering the Dash Cam On / Off

2.4.1 Auto Power On/Off

Once the vehicle engine is started, the Dash Cam automatically turns on. If the Automatic Record function is enabled, the recording will automatically start right after the Dash Cam powers on.

Once the vehicle engine shuts down, the Dash Cam automatically saves the recording and turns off the power within 10 seconds. For some vehicles, DC power socket will keep the supply of power after the engine is turned off. To avoid car battery drain, please manually unplug the Dash cam when the engine is turned off.

2.4.2 Manual Power On/Off

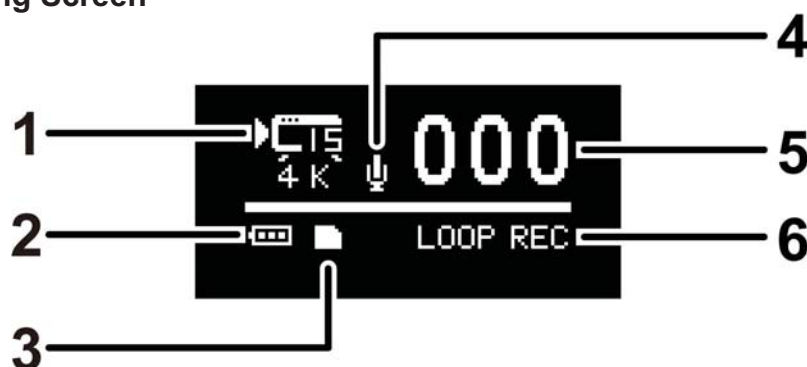
To manually turn on the power, press the POWER button.

To turn off, press and hold the POWER button for at least 3seconds.



2.5 Mode Setting

2.5.1 The Recording Screen



No.	Item	Description
1	Video / Photo Resolution	Select the resolution of recording video and photo.
2	Battery	Indicates the estimated remaining battery power or if it is being charged.
3	Memory Card	Insert the memory card with the gold contacts facing the back of the Dash Cam.
4	Microphone	Microphone ON/OFF
5	Ordinal number	Record or photo Quantity.
6	Loop Recording	Loop Recording mode.

2.5.2 Mode Switch

When the camera is turned on, the default mode is 1920 x 1080 / 30fps. If the camera is required to switch modes between the different modes, press the power / mode button to cycle mode in the following order: 4K / 15fps → 2.7K / 30fps → 1920 x 1440P / 30fps → 1920 x 1080P / 60fps → 1920 x 1080P / 30fps → 1280 x 720P / 30fps → 1280 x 720P / 120fps → PHOTO → return to 4K / 15fps.

1. 4K / 15fps(REC) Mode



When operating the power / mode button to enter 4K 15fps REC mode, press the shutter button, the camera will start recording.

2. 2.7K / 30fps(REC) Mode



When operating the power / mode button to enter 2.7K 30fps REC mode, press the shutter button, the camera will start recording.

3. 1440P / 30fps(LOOP) Mode



When operating the power / mode button to enter 1920 x 1440 30fps loop mode, press the shutter button, the camera will start recording.

4. 1080P / 60fps(LOOP) Mode



When operating the power / mode button to enter 1920 x 1080 60fps loop mode. Press the shutter button, the camera will start recording.

5. 1080P / 30fps(REC) Mode



When operating the power / mode button to enter 1920 x 1080 30fps REC mode, press the shutter button, the camera will start recording.

6. 720P / 30fps(LOOP) Mode



When operating the power / mode button to enter 1280 x 720 30fps loop mode, press the shutter button, the camera will start recording.

7. 720P / 120fps(LOOP) Mode



When operating the power / mode button to enter 1280 x 720 120fps loop mode, press the shutter button, the camera will start recording

8. Camera Mode



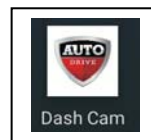
When operating the power / mode button to enter the Photo mode, press the shutter button, the camera will start taking pictures.

9. WiFi Mode

By default, WiFi function is off, to start the WiFi function, simply press the REC(OK) button for 3 seconds, you will hear a beep sound, LCD display will show “WiFi icon.” At this time it has entered the WiFi mode. After WiFi activated, press and hold the record button for 3 seconds to turn it off.

When activated after WiFi mode on the camera, follow the steps below to connect the Application Android smart phone, you can go “google play” download.

Apple’s smart phone, you can go to “apple store” download.

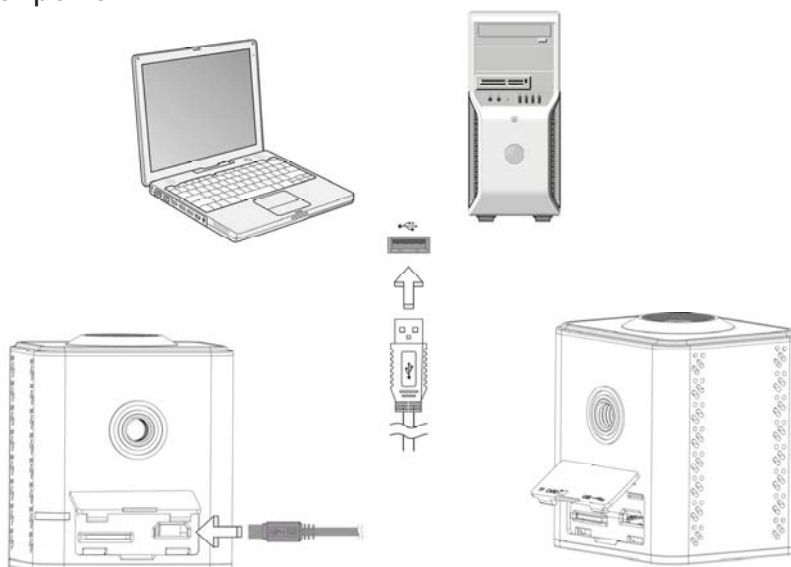


1. After boot, in the case of not recording, hold down the REC button for 3 seconds, LCD displays WiFi icon.
2. Open the Android smart phone WiFi. In WiFi network search apparatus (AutoDrive_AD520).
3. The first time you connect the need to enter a password “1234567890”.
4. The connection is completed. And then run the application: Dash cam You can see the camera viewfinder window from the phone screen and control the camera to take pictures, videos, and download photos and video files from the camera’s memory card to the phone memory upper-related operations.

Note: The camera and mobile phone connections for 1 to 1 relationship, and when connected to a mobile phone, cannot connect to other phones, such as the need to connect the other hand you want to disconnect the machine before connecting that phone, and supports android 2.3 or later and ios phones.

2.5.3 Computer Connection

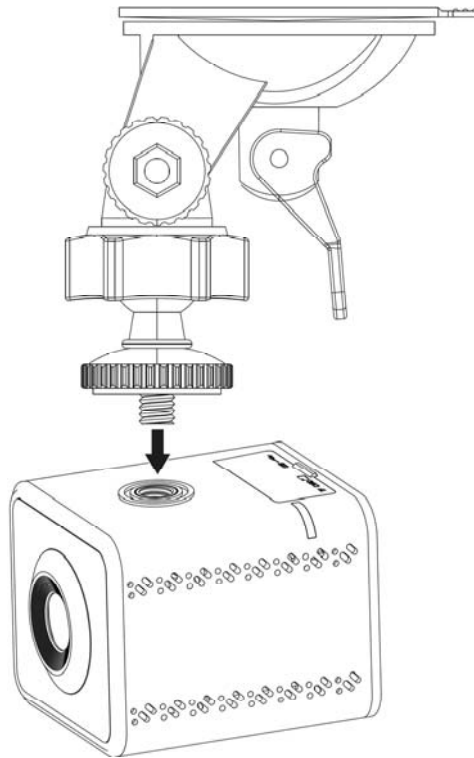
To play back videos and photos on the computer. It must first transfer the file to a computer to transfer files can also free up space on the memory card. For storing new content. The camcorder is connected simple computer operation. After inserting the USB connection to the computer to read, copy data directly after power.



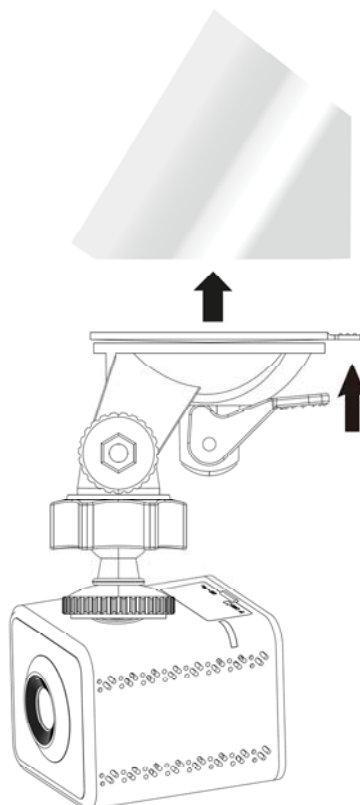
2.6 Installing in Vehicles

2.6.1 Mount to Windshield

1. Attach the bracket to the device. Slide and push until the connection is firm.



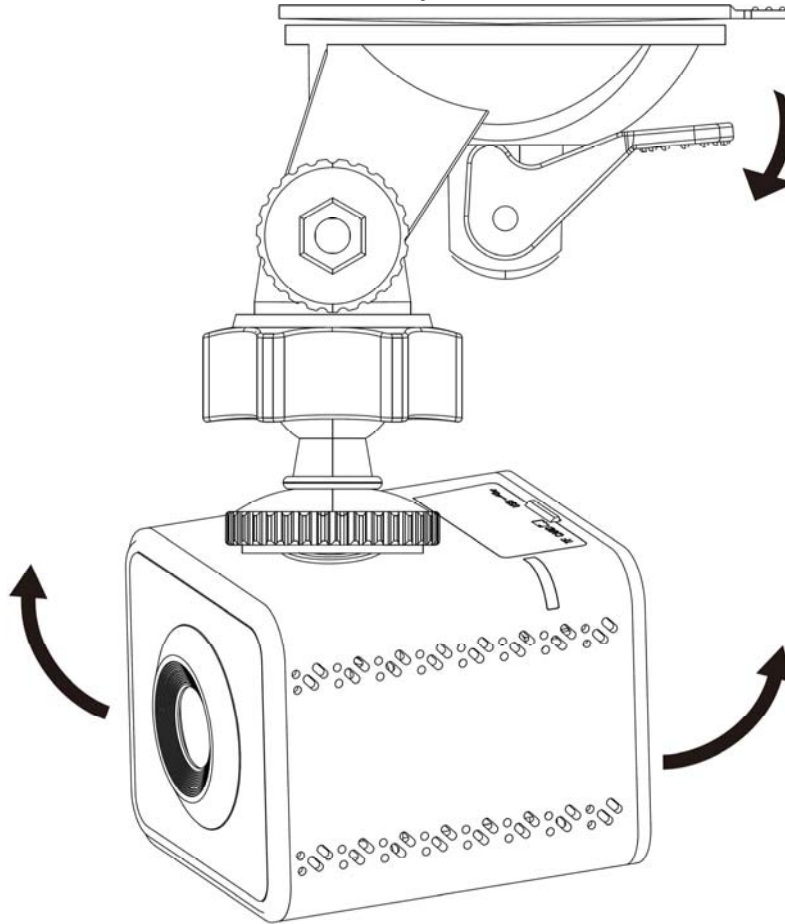
2. With the suction-cup laying flat, position the suction-cup on the windshield.
3. Hold the base firmly on the windshield and press down the clamp to mount the car holder to the windshield. Make sure the base is securely locked in place.



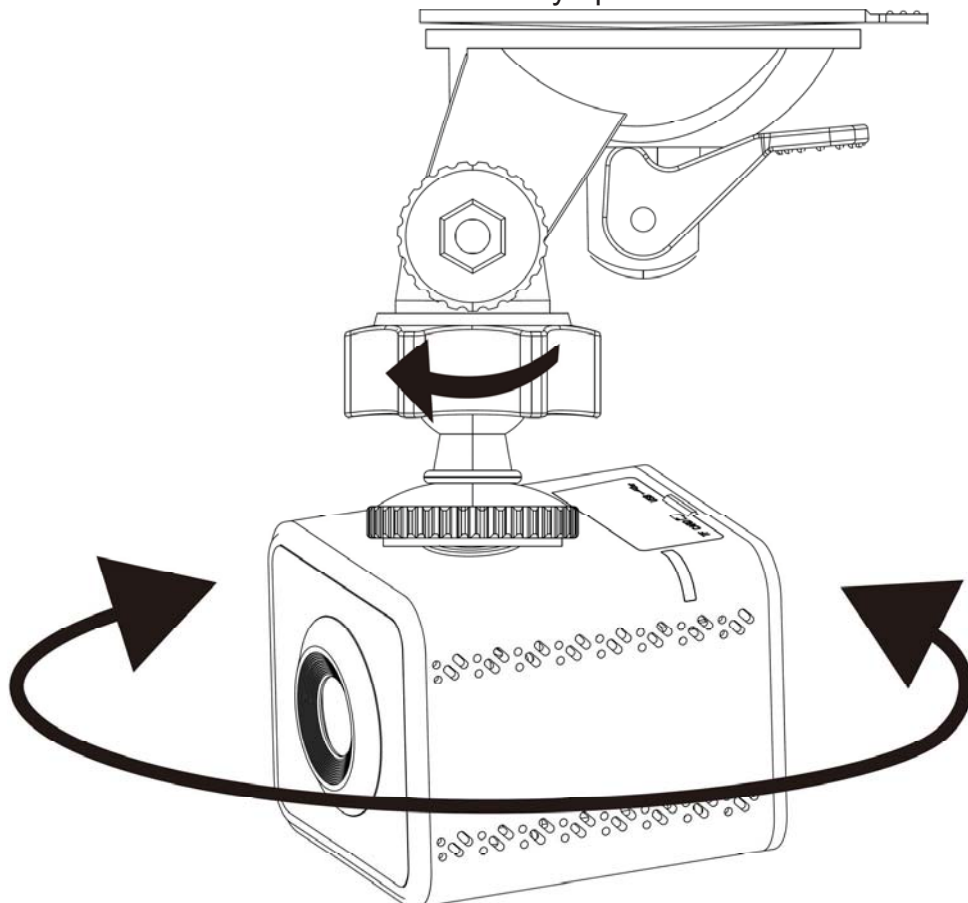
Warning: Do not install the device on a tinted window. Doing so may damage the tint film.

2.6.2 Adjust the Device Position

1. Rotate the knob to swivel the device vertically.



2. Rotate the knob to swivel the device horizontally up to 360°.



3. Then tighten the knobs to make sure the device is securely locked in place.

3 Specifications

Item	Description
Image sensor	CMOS sensor
Resolution	3840(H) x 2160(V)
Storage media	Supports Micro SD, up to 64GB class 10 or above
LED display	0.96" LED color TFT
Lens	Wide Angle Fixed Focus lens F2.0; f=2.65+/-5%mm
Focus range	1.8M
Movie Clip	4K@15fps, 2.7K@30fps, 1080P@60fps, 720P@120fps
	H.264
Still image (Photograph)	Resolution: 16MP
	Format: JPG
Shutter	Electronic shutter Auto
G-Sensor	3-Axis G-Force sensor
ISO	Auto
White Balance	Auto
Microphone	Yes
Buzzer	Yes
Interface	Micro USB to USB 2.0
Battery	Built-in 600mAH Li-polymer rechargeable (This battery is replaceable)
Operating Temperature	14° ~ 158° F
Operating Humidity	20 ~ 70% RH
Storage Temperature	-4° ~ 158° F
Dimensions	52*45*40 mm
Weight	83g
Car Charger	INPUT: DC 12-24V, OUTPUT: DC 5V 1A

4 Frequently Asked Questions

Q: Where to place the Dash Cam?

A: Model with GPS system: for best GPS signal and LDWS result, please mount the Dash Cam in the middle of windshield, under the rear view mirror. If not in the middle, please also keep the Dash Cam horizontally balanced, and the road inside the 2 white bars of LDWS function. However, please consult your local DMV for legal Dash Cam position.

A: Model without GPS system: we recommend that you mount the Dash Cam as close to the center of windshield as possible. However, please consult your local DMV for legal Dash Cam position.

Q: Why the Dash Cam stops recording after some time?

A: Your micro SD card may be full and need to be formatted before using again. 1080P HD videos are big in size and G-sensor locked videos cannot be erased automatically. So we recommend you to manually format your card every 1-2 weeks.

Q: Why recommend Class 6 micro SD card or above?

A: 1080P HD video has a bigger data flow and hence needs a micro SD card with faster writing speed. If Class 10 cards are used, they may cause the Dash Cam to freeze or other video recording/erasing issue.

Q: How do I turn off the screen/audio during recording?

A: To turn off the screen, just press the MODE button once during recording. To turn Audio Record, just press the POWER button shortly. Please note that these 2 buttons do not interrupt recording.

Q: How to lock / record emergency videos?

A: During recording, a sudden force impact on Dash Cam will trigger its G-sensor to automatically lock the current video. A key-like icon will appear on upper left corner of screen and this locked video CANNOT be erased by Loop Recording function. For manual lock/record, please press REC or ensure Dash Cam is in recording status, and then press Menu (M) Button.

Q: For how long will my battery last after a full charge?

A: Our batteries usually take 2-3 hours to fully charge. But this can happen simultaneously when Dash Cam is plugged into your car and working/recording. After a full charge, our batter can last 15 - 60 min., depending on the model and temperature.

Q: How do I record videos?

A: All Dash Cams are programmed to Automatic Record. That is when Dash Cam is plugged into your cigarette lighter and engine starts, the Dash Cam will start recording. It stops 3-10 sec. after your engine stops. Of course, you can always manually start/stop recording by pressing the REC button.

ONE(1)YEAR LIMITED WARRANTY

WARRANTY COVERAGE:

This warranty obligation is limited to the terms set forth below.

WHO IS COVERED:

This product is warranted to the original purchaser or the person receiving the product as a gift against defects in materials and workmanship as based on the date of original purchase ("Warranty Period") from an Authorized Dealer. The original sales receipt showing the product name and the purchase date from an authorized retailer is considered such proof.

WHAT IS COVERED:

This warranty covers new products if a defect in material or workmanship occurs and a valid claim is received within the Warranty Period. At its option, the company will either (1) repair the product at no charge, using new or refurbished replacement parts, or (2) exchange the product with a product that is new or which has been manufactured from new, or serviceable used parts and is at least functionally equivalent or most comparable to the original product in current inventory, or (3) refund the original purchase price of the product. The Company warrants replacement products or parts provided under this warranty against defects in materials and workmanship from the date of the replacement or repair for the remaining portion of the original product's warranty. When a product or part is exchanged, any replacement item becomes your property and the replaced item becomes the company's property. When a refund is given, your product becomes the company's property.

Replacement product can only be sent if all warranty requirements are met.

Failure to follow all requirements can result in delay.

WHAT IS NOT COVERED –

EXCLUSIONS AND LIMITATIONS:

This Limited Warranty applies only to the new products that can be identified by the trademark, trade name, or logo affixed to it. This Limited Warranty does not apply to any non-Auto Drive hardware product or any software, even if packaged or sold with the product. Non-Auto Drive hardware manufacturers, suppliers, or publishers may provide a separate warranty for their own products packaged with the bundled product.

The Company is not liable for any damage to or loss of any programs, data, or other information stored on any media contained within the product, or any non-Auto Drive product or part not covered by this warranty. Recovery or reinstallation of programs, data or other information is not covered under this Limited Warranty.

This warranty does not apply (a) to damage caused by accident, abuse, misuse, neglect, misapplication, or non-Auto Drive product, (b) to damage caused by service

performed by anyone other than an Authorized Service Location, (c) to a product or a part that has been modified without written permission, or (d) if any serial number has been removed or defaced, or (e) to a product, accessories or consumables sold "AS IS" without warranty of any kind by including refurbished Auto Drive products sold "As IS" by some retailers.

THIS LIMITED WARRANTY DOES NOT COVER:

- Shipping charges to return defective product.
- Labor charges for installation or setup of the product, adjustment of customer controls on the product, and installation or repair of any part outside of the product
- Product repair and/or part replacement because of improper installation or maintenance, connections to improper voltage supply, power line surge, lighting damage, retained images or screen markings resulting from viewing fixed stationary content for extended periods, product cosmetic appearance items due to normal wear and tear, unauthorized repair or other cause not within the control of the company.
- Damage or claims for products not being available for use, or for lost data or lost software.
- Damage from mishandled shipments or transit accidents when returning product.
- A product that requires modification or adaptation to enable it to operate in any country other than the country for which it was designed, manufactured, approved and/or authorized, or repair of products damaged by these modifications.
- A product used for commercial or institutional purposes (including but not limited to rental purposes).
- Product lost in shipment and no signature verification receipt can be provided.
- Failure to operate per Owner's Manual.

TO OBTAIN ASSISTANCE

Send an email to **auto@digitasupportdesk.com**.

For technical support call toll free: **888-288-6360**

REPAIR OR REPLACEMENT AS PROVIDED UNDER THIS WARRANTY IS THE EXCLUSIVE REMEDY FOR THE CONSUMER. AUTO DRIVE SHALL NOT BE LIABLE FOR ANY INCIDENTAL OR CONSEQUENTIAL DAMAGES FOR BREACH OF ANY EXPRESS OR IMPLIED WARRANTY ON THIS PRODUCT. EXCEPT TO THE EXTENT PROHIBITED BY APPLICABLE LAW, ANY IMPLIED WARRANTY OR MERCHANTABILITY OR FITNESS FOR A PARTICULAR PURPOSE ON THIS PRODUCT IS LIMITED IN DURATION TO THE DURATION OF THIS WARRANTY. Some states do not allow the exclusions or limitations of incidental or consequential damages, or allow limitations on how long an implied warranty lasts, so the above limitations or exclusions may not apply to you.

This warranty gives you specific legal rights. You may have other rights which may vary from state/province to state/province.

Product Registration Card

Carte d'enregistrement du produit

<div>Model Number / Numéro de modèle</div>	<div>Serial Number / Numéro de série</div>
--	--

Registering your product is essential to receive all of the privileges of product ownership.
So please complete the information below in ink, and mail this card today.

L'enregistrement de votre produit est essentiel pour bénéficier de tous les avantages liés à l'achat du produit.
Veuillez donc fournir les renseignements ci-dessous à l'encre et nous renvoyer cette carte dès aujourd'hui.

Your Name Votre Nom																																																	
Address Adresse										First / Prénom										Initial / Initiale du deuxième prénom										Last / Nom																			
Street / Rue										City / Ville										State / Province										Zip Code / Code postal										Apt # / N° d'appartement									
Date of Purchase Date d'achat										Where Purchased / Lieu d'achat										Type of Store Type de magasin										Online En ligne										Retail Chez un détaillant									
Month Mois										Day Jour										Year Année										Phone Number (Optional) Numéro de téléphone (facultatif)										Area Code / Code de la région									
*E-mail Address *Adresse de courriel																																																	

Important – Please return this card at once
Important – Veuillez renvoyer immédiatement cette carte

<input type="checkbox"/>	YES	Would like to receive information on product updates/ upgrades, new products and other exclusive offers.	<input type="checkbox"/>	OUI	Je voudrais de recevoir des informations sur Mises à jour de produit/mises à jour, de nouveaux produits et d'autres offres exclusives.
<input type="checkbox"/>	NO		<input type="checkbox"/>	NON	



*Important! Important! Veuillez envoyer
Please Mail TODAY le courrier AUJOURD'HUI
or Register Online ou vous inscrire en ligne*



**P.O. Box 611090
San Jose, CA 95161**

**First Class
Postage
Required**