



TEST REPORT

FCC PART 15.247

Report Reference No.: **CTL1706158041-WF**

Compiled by:
(position+printed name+signature)

Allen Wang
(File administrators)

Allen Wang

Tested by:
(position+printed name+signature)

Nice Nong
(Test Engineer)

NICE NONG

Approved by:
(position+printed name+signature)

Ivan Xie
(Manager)

Ivan Xie

Product Name.....: Single Outlet Grounded Indoor Socket

Model/Type reference: BTM-51187

List Model(s).....: N/A

Trade Mark.....: N/A

FCC ID.....: **2AM2X-BTM-51187**

Applicant's name: **MhomeElectronic Technology Co., LTD**

Address of applicant: Building B, Tangwei Industrial Zone, Dongyuan Road, Shipai Town, Dongguan City, Guangdong China

Test Firm: **Shenzhen CTL Testing Technology Co., Ltd.**

Address of Test Firm: Floor 1-A, Baisha Technology Park, No.3011, Shaheci Road, Nanshan District, Shenzhen, China 518055

Test specification.....:

Standard.....: **FCC Part 15.247:** Operation within the bands 902-928 MHz, 2400-2483.5 MHz and 5725-5850 MHz.

TRF Originator: Shenzhen CTL Testing Technology Co., Ltd.

Master TRF: Dated 2011-01

Date of Receipt.....: Jul. 01, 2017

Date of Test Date.....: Jul. 02, 2017 –Jul. 12, 2017

Data of Issue.....: Jul. 13, 2017

Result.....: Pass

Shenzhen CTL Testing Technology Co., Ltd. All rights reserved.

This publication may be reproduced in whole or in part for non-commercial purposes as long as the Shenzhen CTL Testing Technology Co., Ltd. is acknowledged as copyright owner and source of the material. Shenzhen CTL Testing Technology Co., Ltd. takes no responsibility for and will not assume liability for damages resulting from the reader's interpretation of the reproduced material due to its placement and context.

TEST REPORT

| | | |
|--------------------------|-------------------------|--------------------------------|
| Test Report No. : | CTL1706158041-WF | Jul. 13, 2017 Date of issue |
|--------------------------|-------------------------|--------------------------------|

Equipment under Test : Single Outlet Grounded Indoor Socket

Model /Type : BTM-51187

Listed Models : N/A

Applicant : **MhomeElectronic Technology Co., LTD**

Address : Building B, Tangwei Industrial Zone, Dongyuan Road, Shipai Town, Dongguan City, Guangdong China

Manufacturer : **MhomeElectronic Technology Co., LTD**

Address : Building B, Tangwei Industrial Zone, Dongyuan Road, Shipai Town, Dongguan City, Guangdong China

| | |
|--------------------|---------------|
| Test result | Pass * |
|--------------------|---------------|

* In the configuration tested, the EUT complied with the standards specified page 5.

The test report merely corresponds to the test sample.

It is not permitted to copy extracts of these test result without the written permission of the test laboratory.

Table of Contents

Page

| | |
|--|-----------|
| 1. SUMMARY..... | 5 |
| 1.1. TEST STANDARDS..... | 5 |
| 1.2. TEST DESCRIPTION..... | 5 |
| 1.3. TEST FACILITY..... | 6 |
| 1.4. STATEMENT OF THE MEASUREMENT UNCERTAINTY..... | 6 |
| 2. GENERAL INFORMATION..... | 7 |
| 2.1. ENVIRONMENTAL CONDITIONS..... | 7 |
| 2.2. GENERAL DESCRIPTION OF EUT..... | 7 |
| 2.3. DESCRIPTION OF TEST MODES AND TEST FREQUENCY..... | 7 |
| 2.4. EQUIPMENTS USED DURING THE TEST..... | 8 |
| 2.5. RELATED SUBMITTAL(S) / GRANT (S)..... | 8 |
| 2.6. MODIFICATIONS..... | 8 |
| 3. TEST CONDITIONS AND RESULTS..... | 9 |
| 3.1. CONDUCTED EMISSIONS TEST..... | 9 |
| 3.2. RADIATED EMISSIONS AND BAND EDGE..... | 12 |
| 3.3. MAXIMUM CONDUCTED OUTPUT POWER..... | 19 |
| 3.4. POWER SPECTRAL DENSITY..... | 20 |
| 3.5. 6dB BANDWIDTH..... | 22 |
| 3.6. OUT-OF-BAND EMISSIONS..... | 24 |
| 3.7. ANTENNA REQUIREMENT..... | 28 |
| 4. TEST SETUP PHOTOS OF THE EUT..... | 29 |
| 5. EXTERNAL AND INTERNAL PHOTOS OF THE EUT..... | 30 |



1. SUMMARY

1.1. TEST STANDARDS

The tests were performed according to following standards:

[FCC Rules Part 15.247](#): Frequency Hopping, Direct Spread Spectrum and Hybrid Systems that are in operation within the bands of 902-928 MHz, 2400-2483.5 MHz, and 5725-5850 MHz

[ANSI C63.10: 2013](#): American National Standard for Testing Unlicensed Wireless Devices

[ANSI C63.4: 2014](#): –American National Standard for Methods of Measurement of Radio-Noise Emissions from Low-Voltage Electrical and Electronic Equipment in the Range of 9 kHz to 40GHz
Range of 9 kHz to 40GHz

[KDB558074 D01 V03r05](#): Guidance for Performing Compliance Measurements on Digital Transmission Systems (DTS) Operating Under §15.247

1.2. Test Description

| FCC PART 15.247 | | |
|---------------------------------|--------------------------------|------|
| FCC Part 15.207 | AC Power Conducted Emission | PASS |
| FCC Part 15.247(a)(2) | 6dB Bandwidth | PASS |
| FCC Part 15.247(d) | Spurious RF Conducted Emission | PASS |
| FCC Part 15.247(b) | Maximum Conducted Output Power | PASS |
| FCC Part 15.247(e) | Power Spectral Density | PASS |
| FCC Part 15.109/ 15.205/ 15.209 | Radiated Emissions | PASS |
| FCC Part 15.247(d) | Band Edge | PASS |
| FCC Part 15.203/15.247 (b) | Antenna Requirement | PASS |

1.3. Test Facility

1.3.1 Address of the test laboratory

Shenzhen CTL Testing Technology Co., Ltd.

Floor 1-A, Baisha Technology Park, No. 3011, Shahexi Road, Nanshan, Shenzhen 518055 China

There is one 3m semi-anechoic chamber and two line conducted labs for final test. The Test Sites meet the requirements in documents ANSI C63.4 and CISPR 32/EN 55032 requirements.

1.3.2 Laboratory accreditation

The test facility is recognized, certified, or accredited by the following organizations:

IC Registration No.: 9618B

The 3m alternate test site of Shenzhen CTL Testing Technology Co., Ltd. EMC Laboratory has been registered by Certification and Engineer Bureau of Industry Canada for the performance of with Registration No.: 9618B on November 13, 2013.

FCC-Registration No.: 970318

Shenzhen CTL Testing Technology Co., Ltd. EMC Laboratory has been registered and fully described in a report filed with the (FCC) Federal Communications Commission. The acceptance letter from the FCC is maintained in our files. Registration 970318, December 19, 2013.

1.4. Statement of the measurement uncertainty

The data and results referenced in this document are true and accurate. The reader is cautioned that there may be errors within the calibration limits of the equipment and facilities. The measurement uncertainty was calculated for all measurements listed in this test report acc. to CISPR 16 - 4 "Specification for radio disturbance and immunity measuring apparatus and methods – Part 4: Uncertainty in EMC Measurements" and is documented in the Shenzhen CTL Testing Technology Co., Ltd. quality system acc. to DIN EN ISO/IEC 17025. Furthermore, component and process variability of devices similar to that tested may result in additional deviation. The manufacturer has the sole responsibility of continued compliance of the device.

Hereafter the best measurement capability for CTL laboratory is reported:

| Test | Measurement Uncertainty | Notes |
|---|-------------------------|-------|
| Transmitter power conducted | ±0.57 dB | (1) |
| Transmitter power Radiated | ±2.20 dB | (1) |
| Conducted spurious emission 9KHz-40 GHz | ±2.20 dB | (1) |
| Occupied Bandwidth | ±0.01ppm | (1) |
| Radiated Emission 30~1000MHz | ±4.10dB | (1) |
| Radiated Emission Above 1GHz | ±4.32dB | (1) |
| Conducted Disturbance0.15~30MHz | ±3.20dB | (1) |

- (1) This uncertainty represents an expanded uncertainty expressed at approximately the 95% confidence level using a coverage factor of k=2.

2. GENERAL INFORMATION

2.1. Environmental conditions

During the measurement the environmental conditions were within the listed ranges:

| | |
|---------------------|---------|
| Normal Temperature: | 25°C |
| Relative Humidity: | 55 % |
| Air Pressure: | 101 kPa |

2.2. General Description of EUT

| | |
|-----------------------|--------------------------------------|
| Product Name: | Single Outlet Grounded Indoor Socket |
| Model/Type reference: | BTM-51187 |
| Power supply: | AC 120V/60Hz |
| Bluetooth BLE | |
| Supported type: | Version 4.0 for low Energy |
| Modulation: | GFSK |
| Operation frequency: | 2402MHz to 2480MHz |
| Channel number: | 40 |
| Channel separation: | 2 MHz |
| Antenna type: | PCB Antenna |
| Antenna gain: | 0dBi |

Note: For more details, please refer to the user's manual of the EUT.

2.3. Description of Test Modes and Test Frequency

The Applicant provides communication tools software to control the EUT for staying in continuous transmitting (Duty Cycle more than 98%) and receiving mode for testing.

There are 39 channels provided to the EUT and Channel 00/19/39 were selected for BT4.0 test.

Operation Frequency List BT4.0 :

| Channel | Frequency (MHz) |
|-----------|-----------------|
| 00 | 2402 |
| 02 | 2404 |
| 03 | 2406 |
| ⋮ | ⋮ |
| 19 | 2440 |
| ⋮ | ⋮ |
| 37 | 2476 |
| 38 | 2478 |
| 39 | 2480 |

Note: The line display in grey were the channel selected for testing

2.4. Equipments Used during the Test

| Test Equipment | Manufacturer | Model No. | Serial No. | Calibration Date | Calibration Due Date |
|----------------------------|----------------------|---------------------------|------------------|------------------|----------------------|
| LISN | R&S | ENV216 | 3560.6550.1 2 | 2017/06/02 | 2018/06/01 |
| LISN | R&S | ESH2-Z5 | 860014/010 | 2017/06/02 | 2018/06/01 |
| Bilog Antenna | Sunol Sciences Corp. | JB1 | A061713 | 2017/06/02 | 2018/06/01 |
| EMI Test Receiver | R&S | ESCI | 103710 | 2017/06/02 | 2018/06/01 |
| Spectrum Analyzer | Agilent | E4407B | MY41440676 | 2017/05/21 | 2018/05/20 |
| Spectrum Analyzer | Agilent | N9020 | US46220290 | 2017/01/16 | 2018/01/17 |
| Power Meter | Anritsu | ML2487B | 110553 | 2017/06/02 | 2018/06/01 |
| Power Sensor | Anritsu | MA2411B | 100345 | 2017/05/21 | 2018/05/20 |
| Controller | EM Electronics | Controller EM 1000 | N/A | 2017/05/21 | 2018/05/20 |
| Horn Antenna | Sunol Sciences Corp. | DRH-118 | A062013 | 2017/05/19 | 2018/05/18 |
| Active Loop Antenna | SCHWARZBECK | FMZB1519 | 1519-037 | 2017/05/19 | 2018/05/18 |
| Amplifier | Agilent | 8349B | 3008A02306 | 2017/05/19 | 2018/05/18 |
| Amplifier | Agilent | 8447D | 2944A10176 | 2017/05/19 | 2018/05/18 |
| Temperature/Humidity Meter | Gangxing | CTH-608 | 02 | 2017/05/20 | 2018/05/19 |
| High-Pass Filter | K&L | 9SH10-2700/X1 2750-O/O | N/A | 2017/05/20 | 2018/05/19 |
| High-Pass Filter | K&L | 41H10-1375/U1 2750-O/O | N/A | 2017/05/20 | 2018/05/19 |
| Coaxial Cables | HUBER+SUHNER | SUCOFLEX 104PEA-10M | 10m | 2017/06/02 | 2018/06/01 |
| Coaxial Cables | HUBER+SUHNER | SUCOFLEX 104PEA-3M | 3m | 2017/06/02 | 2018/06/01 |
| Coaxial Cables | HUBER+SUHNER | SUCOFLEX 104PEA-3M | 3m | 2017/06/02 | 2018/06/01 |
| RF Cable | Megalon | RF-A303 | N/A | 2017/06/02 | 2018/06/01 |

The calibration interval was one year

2.5. Related Submittal(s) / Grant (s)

This submittal(s) (test report) is intended to comply with Section 15.247 of the FCC Part 15, Subpart C Rules.

2.6. Modifications

No modifications were implemented to meet testing criteria.

3. TEST CONDITIONS AND RESULTS

3.1. Conducted Emissions Test

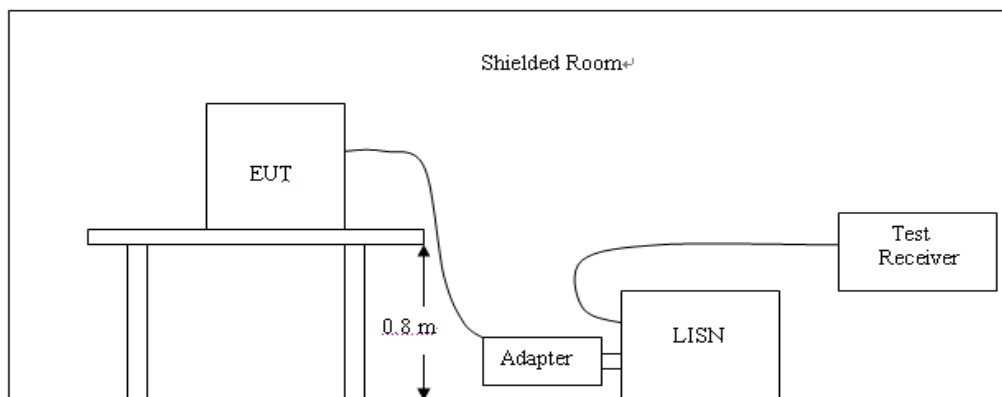
LIMIT

FCC CFR Title 47 Part 15 Subpart C Section 15.207

| Frequency range (MHz) | Limit (dBuV) | |
|-----------------------|--------------|-----------|
| | Quasi-peak | Average |
| 0.15-0.5 | 66 to 56* | 56 to 46* |
| 0.5-5 | 56 | 46 |
| 5-30 | 60 | 50 |

* Decreases with the logarithm of the frequency.

TEST CONFIGURATION



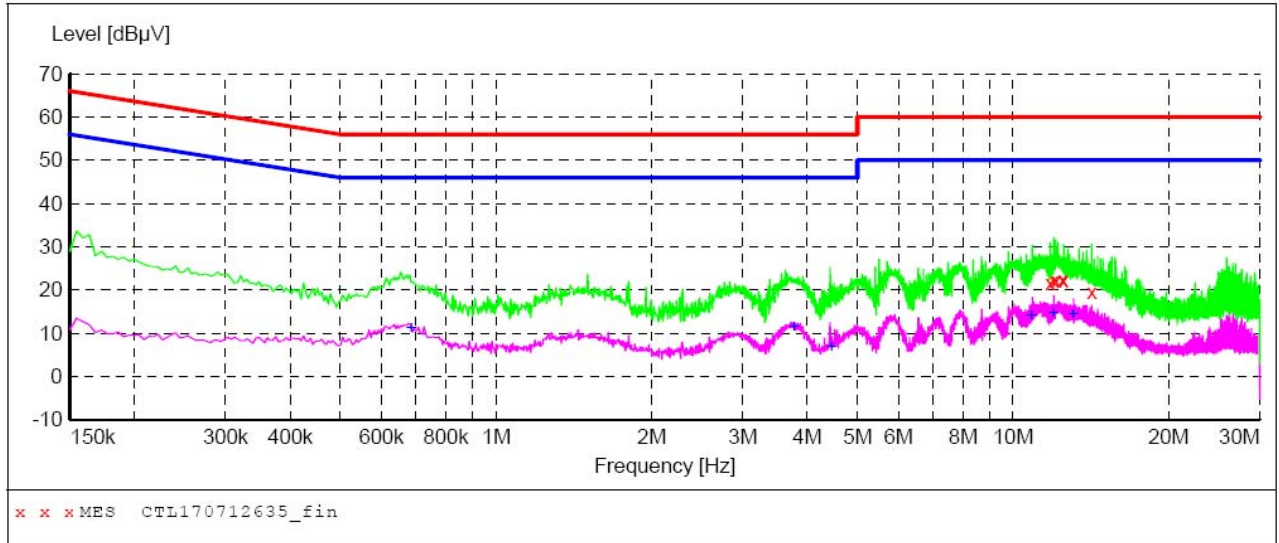
TEST PROCEDURE

1. The equipment was set up as per the test configuration to simulate typical actual usage per the user's manual. The EUT is a tabletop system; a wooden table with a height of 0.8 meters is used and is placed on the ground plane as per ANSI C63.10:2013.
2. Support equipment, if needed, was placed as per ANSI C63.10:2013.
3. All I/O cables were positioned to simulate typical actual usage as per ANSI C63.10:2013.
4. The adapter received AC120V/60Hz power through a Line Impedance Stabilization Network (LISN) which supplied power source and was grounded to the ground plane.
5. All support equipments received AC power from a second LISN, if any.
6. The EUT test program was started. Emissions were measured on each current carrying line of the EUT using a spectrum Analyzer / Receiver connected to the LISN powering the EUT. The LISN has two monitoring points: Line 1 (Hot Side) and Line 2 (Neutral Side). Two scans were taken: one with Line 1 connected to Analyzer / Receiver and Line 2 connected to a 50 ohm load; the second scan had Line 1 connected to a 50 ohm load and Line 2 connected to the Analyzer / Receiver.
7. Analyzer / Receiver scanned from 150 KHz to 30MHz for emissions in each of the test modes.
8. During the above scans, the emissions were maximized by cable manipulation.

TEST RESULTS

SCAN TABLE: "Voltage (9K-30M)FIN"

Short Description: 150K-30M Voltage



MEASUREMENT RESULT: "CTL170712635_fin"

7/12/2017 6:09PM

| Frequency MHz | Level dBµV | Transd dB | Limit dBµV | Margin dB | Detector | Line | PE |
|------------------|---------------|--------------|---------------|--------------|----------|------|-----|
| 11.798000 | 21.60 | 10.6 | 60 | 38.4 | QP | L1 | GND |
| 12.002000 | 22.00 | 10.6 | 60 | 38.0 | QP | L1 | GND |
| 12.104000 | 22.20 | 10.6 | 60 | 37.8 | QP | L1 | GND |
| 12.482000 | 22.30 | 10.6 | 60 | 37.7 | QP | L1 | GND |
| 12.506000 | 22.20 | 10.6 | 60 | 37.8 | QP | L1 | GND |
| 14.186000 | 19.60 | 10.6 | 60 | 40.4 | QP | L1 | GND |

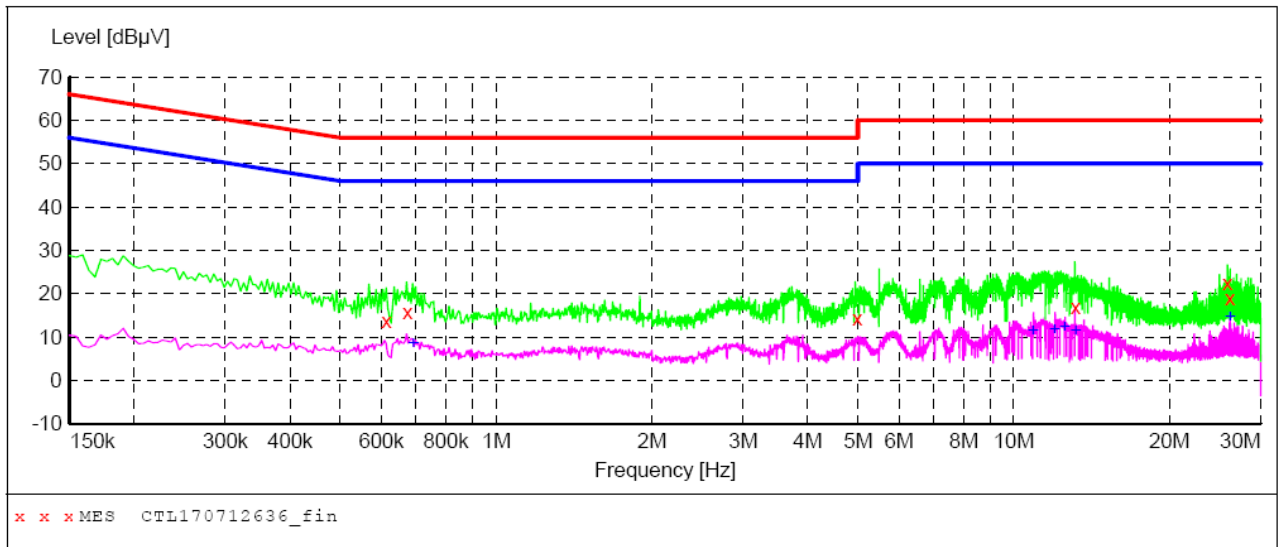
MEASUREMENT RESULT: "CTL170712635_fin2"

7/12/2017 6:09PM

| Frequency MHz | Level dBµV | Transd dB | Limit dBµV | Margin dB | Detector | Line | PE |
|------------------|---------------|--------------|---------------|--------------|----------|------|-----|
| 0.686000 | 11.10 | 10.2 | 46 | 34.9 | AV | L1 | GND |
| 3.770000 | 11.20 | 10.4 | 46 | 34.8 | AV | L1 | GND |
| 4.454000 | 6.80 | 10.4 | 46 | 39.2 | AV | L1 | GND |
| 10.856000 | 14.00 | 10.6 | 50 | 36.0 | AV | L1 | GND |
| 11.972000 | 14.60 | 10.6 | 50 | 35.4 | AV | L1 | GND |
| 13.064000 | 14.30 | 10.6 | 50 | 35.7 | AV | L1 | GND |

SCAN TABLE: "Voltage (9K-30M)FIN"

Short Description: 150K-30M Voltage



MEASUREMENT RESULT: "CTL170712636_fin"

7/12/2017 6:12PM

| Frequency MHz | Level dBµV | Transd dB | Limit dBµV | Margin dB | Detector | Line | PE |
|------------------|---------------|--------------|---------------|--------------|----------|------|-----|
| 0.614000 | 13.70 | 10.2 | 56 | 42.3 | QP | N | GND |
| 0.674000 | 15.80 | 10.2 | 56 | 40.2 | QP | N | GND |
| 4.988000 | 14.30 | 10.4 | 56 | 41.7 | QP | N | GND |
| 13.166000 | 16.80 | 10.6 | 60 | 43.2 | QP | N | GND |
| 25.874000 | 22.40 | 11.1 | 60 | 37.6 | QP | N | GND |
| 26.168000 | 18.80 | 11.2 | 60 | 41.2 | QP | N | GND |

MEASUREMENT RESULT: "CTL170712636_fin2"

7/12/2017 6:12PM

| Frequency MHz | Level dBµV | Transd dB | Limit dBµV | Margin dB | Detector | Line | PE |
|------------------|---------------|--------------|---------------|--------------|----------|------|-----|
| 0.692000 | 8.50 | 10.2 | 46 | 37.5 | AV | N | GND |
| 10.904000 | 11.20 | 10.6 | 50 | 38.8 | AV | N | GND |
| 11.990000 | 11.60 | 10.6 | 50 | 38.4 | AV | N | GND |
| 12.536000 | 12.20 | 10.6 | 50 | 37.8 | AV | N | GND |
| 13.172000 | 11.40 | 10.6 | 50 | 38.6 | AV | N | GND |
| 26.174000 | 14.50 | 11.2 | 50 | 35.5 | AV | N | GND |

3.2. Radiated Emissions and Band Edge

Limit

For intentional device, according to § 15.209(a), the general requirement of field strength of radiated emission out of authorized band shall not exceed the following table at a 3 meters measurement distance.

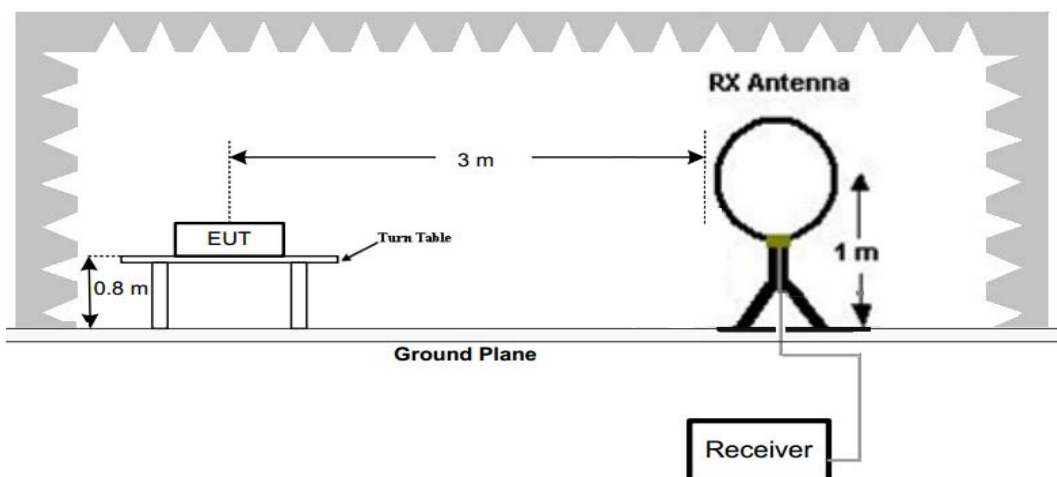
In addition, radiated emissions which fall in the restricted bands, as defined in §15.205(a), must also comply with the radiated emission limits specified in §15.209(a)

Radiated emission limits

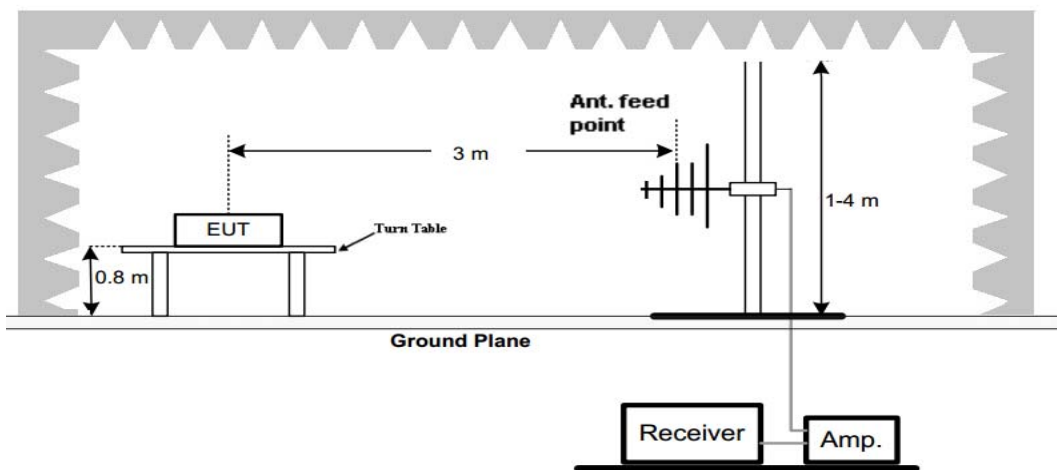
| Frequency (MHz) | Distance (Meters) | Radiated (dBµV/m) | Radiated (µV/m) |
|-----------------|-------------------|--|-----------------------|
| 0.009-0.49 | 3 | $20\log(2400/F(\text{KHz}))+40\log(300/3)$ | $2400/F(\text{KHz})$ |
| 0.49-1.705 | 3 | $20\log(24000/F(\text{KHz}))+40\log(30/3)$ | $24000/F(\text{KHz})$ |
| 1.705-30 | 3 | $20\log(30)+40\log(30/3)$ | 30 |
| 30-88 | 3 | 40.0 | 100 |
| 88-216 | 3 | 43.5 | 150 |
| 216-960 | 3 | 46.0 | 200 |
| Above 960 | 3 | 54.0 | 500 |

TEST CONFIGURATION

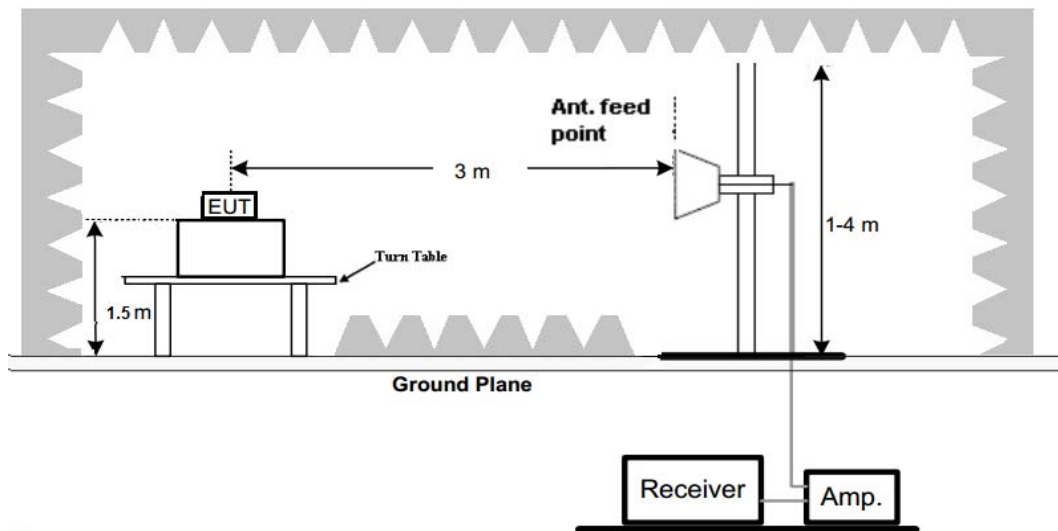
(A) Radiated Emission Test Set-Up, Frequency Below 30MHz



(B) Radiated Emission Test Set-Up, Frequency below 1000MHz



(C) Radiated Emission Test Set-Up, Frequency above 1000MHz



Test Procedure

1. Below 1GHz measurement the EUT is placed on a turntable which is 0.8m above ground plane, and above 1GHz measurement EUT was placed on a low permittivity and low loss tangent turn table which is 1.5m above ground plane.
2. Maximum procedure was performed by raising the receiving antenna from 1m to 4m and rotating the turn table from 0° to 360° to acquire the highest emissions from EUT
3. And also, each emission was to be maximized by changing the polarization of receiving antenna both horizontal and vertical.
4. Repeat above procedures until all frequency measurements have been completed.

TEST RESULTS

Remark:

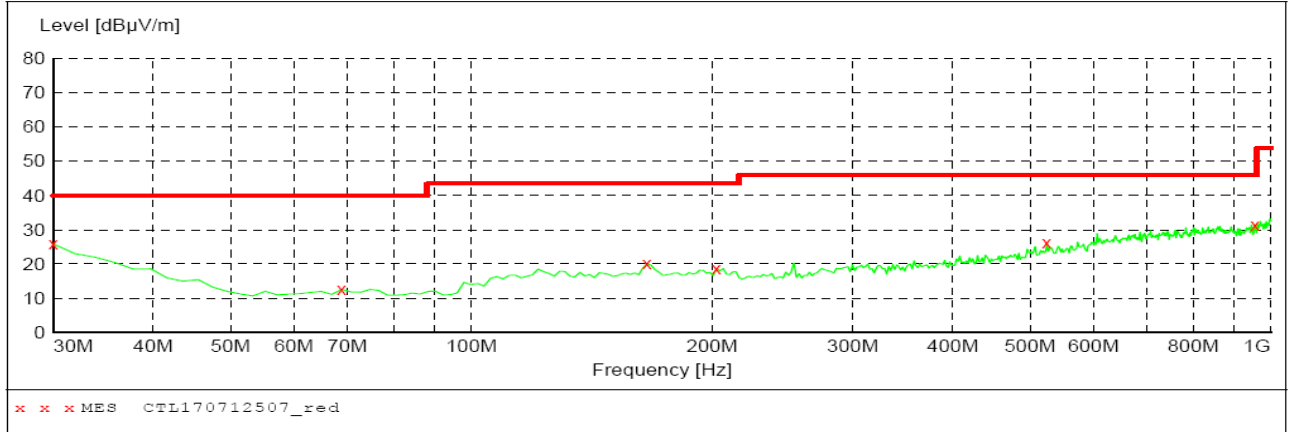
1. For below 1GHz testing recorded worst at BLE low channel.
2. Radiated emission test from 9 KHz to 10th harmonic of fundamental was verified, and no emission found except system noise floor in 9 KHz to 30MHz and not recorded in this report.

For 30MHz-1GHz

Horizontal

SWEEP TABLE: "test (30M-1G)"

| Short Description: | | Field Strength | | | | |
|--------------------|-----------|----------------|------------|-----------|------------|--|
| Start | Stop | Detector | Meas. Time | IF Bandw. | Transducer | |
| Frequency | Frequency | | | | | |
| 30.0 MHz | 1.0 GHz | MaxPeak | 300.0 ms | 120 kHz | JB1 | |



MEASUREMENT RESULT: "CTL170712507_red"

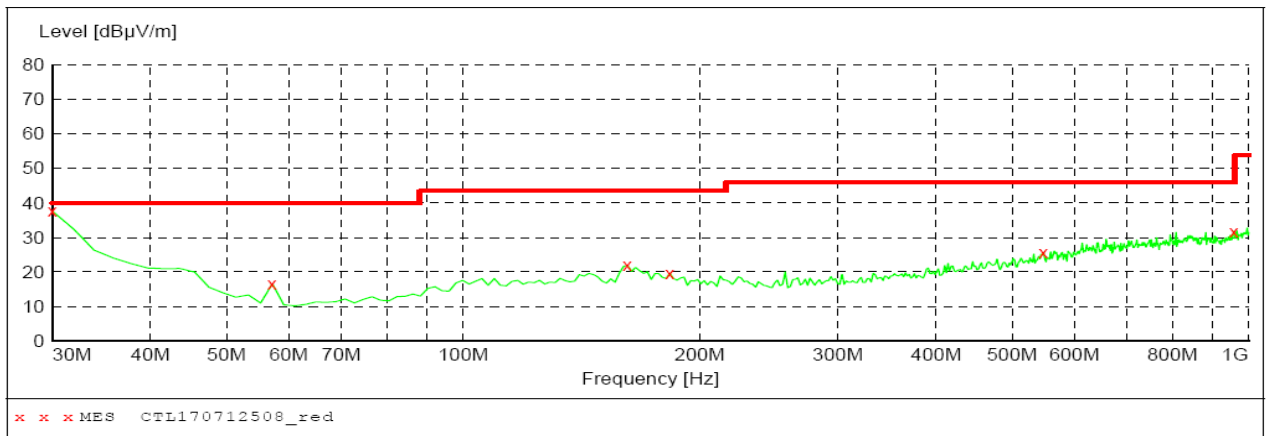
7/12/2017 11:54AM

| Frequency MHz | Level dBµV/m | Transd dB | Limit dBµV/m | Margin dB | Det. | Height cm | Azimuth deg | Polarization |
|---------------|--------------|-----------|--------------|-----------|------|-----------|-------------|--------------|
| 30.000000 | 25.80 | 22.1 | 40.0 | 14.2 | --- | 0.0 | 0.00 | HORIZONTAL |
| 68.800000 | 12.60 | 8.9 | 40.0 | 27.4 | --- | 0.0 | 0.00 | HORIZONTAL |
| 165.800000 | 20.10 | 14.5 | 43.5 | 23.4 | --- | 0.0 | 0.00 | HORIZONTAL |
| 202.660000 | 18.60 | 14.6 | 43.5 | 24.9 | --- | 0.0 | 0.00 | HORIZONTAL |
| 524.700000 | 26.20 | 21.2 | 46.0 | 19.8 | --- | 0.0 | 0.00 | HORIZONTAL |
| 955.380000 | 31.40 | 27.4 | 46.0 | 14.6 | --- | 0.0 | 0.00 | HORIZONTAL |

Vertical

SWEEP TABLE: "test (30M-1G)"

| Short Description: | | Field Strength | | | | |
|--------------------|-----------|----------------|------------|-----------|------------|--|
| Start | Stop | Detector | Meas. Time | IF Bandw. | Transducer | |
| Frequency | Frequency | | | | | |
| 30.0 MHz | 1.0 GHz | MaxPeak | 300.0 ms | 120 kHz | JB1 | |



MEASUREMENT RESULT: "CTL170712508_red"

7/12/2017 11:55AM

| Frequency MHz | Level dBµV/m | Transd dB | Limit dBµV/m | Margin dB | Det. | Height cm | Azimuth deg | Polarization |
|---------------|--------------|-----------|--------------|-----------|------|-----------|-------------|--------------|
| 30.000000 | 37.60 | 22.1 | 40.0 | 2.4 | --- | 0.0 | 0.00 | VERTICAL |
| 57.160000 | 16.60 | 7.9 | 40.0 | 23.4 | --- | 0.0 | 0.00 | VERTICAL |
| 161.920000 | 21.90 | 14.5 | 43.5 | 21.6 | --- | 0.0 | 0.00 | VERTICAL |
| 183.260000 | 19.70 | 14.6 | 43.5 | 23.8 | --- | 0.0 | 0.00 | VERTICAL |
| 547.980000 | 25.60 | 21.8 | 46.0 | 20.4 | --- | 0.0 | 0.00 | VERTICAL |
| 957.320000 | 31.80 | 27.4 | 46.0 | 14.2 | --- | 0.0 | 0.00 | VERTICAL |

For 1GHz to 25GHz

BT4.0 Mode (above 1GHz)

| Frequency(MHz): | | | 2402 | | Polarity: | | | HORIZONTAL | |
|-----------------|-------------------------|----|----------------|-------------|------------------|-----------------------|-------------------|--------------------|--------------------------|
| Frequency (MHz) | Emission Level (dBuV/m) | | Limit (dBuV/m) | Margin (dB) | Raw Value (dBuV) | Antenna Factor (dB/m) | Cable Factor (dB) | Pre-amplifier (dB) | Correction Factor (dB/m) |
| 4804.00 | 47.25 | PK | 74 | 26.75 | 42.74 | 33.49 | 6.91 | 35.89 | 4.51 |
| 4804.00 | -- | AV | 54 | -- | -- | -- | -- | -- | -- |
| 5011.50 | 43.50 | PK | 74 | 30.50 | 36.68 | 34.02 | 7.04 | 34.23 | 6.82 |
| 5011.50 | -- | AV | 54 | -- | -- | -- | -- | -- | -- |
| 7206.00 | 44.69 | PK | 74 | 29.31 | 33.58 | 36.95 | 9.18 | 35.03 | 11.11 |
| 7206.00 | -- | AV | 54 | -- | -- | -- | -- | -- | -- |

| Frequency(MHz): | | | 2402 | | Polarity: | | | VERTICAL | |
|-----------------|-------------------------|----|----------------|-------------|------------------|-----------------------|-------------------|--------------------|--------------------------|
| Frequency (MHz) | Emission Level (dBuV/m) | | Limit (dBuV/m) | Margin (dB) | Raw Value (dBuV) | Antenna Factor (dB/m) | Cable Factor (dB) | Pre-amplifier (dB) | Correction Factor (dB/m) |
| 4804.00 | 47.85 | PK | 74 | 26.15 | 43.34 | 33.49 | 6.91 | 35.89 | 4.51 |
| 4804.00 | -- | AV | 54 | -- | -- | -- | -- | -- | -- |
| 5011.50 | 43.63 | PK | 74 | 30.37 | 36.81 | 34.02 | 7.04 | 34.23 | 6.82 |
| 5011.50 | -- | AV | 54 | -- | -- | -- | -- | -- | -- |
| 7206.00 | 44.41 | PK | 74 | 29.59 | 33.30 | 36.95 | 9.18 | 35.03 | 11.11 |
| 7206.00 | -- | AV | 54 | -- | -- | -- | -- | -- | -- |

| Frequency(MHz): | | | 2440 | | Polarity: | | | HORIZONTAL | |
|-----------------|-------------------------|----|----------------|-------------|------------------|-----------------------|-------------------|--------------------|--------------------------|
| Frequency (MHz) | Emission Level (dBuV/m) | | Limit (dBuV/m) | Margin (dB) | Raw Value (dBuV) | Antenna Factor (dB/m) | Cable Factor (dB) | Pre-amplifier (dB) | Correction Factor (dB/m) |
| 4880.00 | 46.85 | PK | 74 | 27.15 | 42.20 | 33.60 | 6.95 | 35.90 | 4.65 |
| 4880.00 | -- | AV | 54 | -- | -- | -- | -- | -- | -- |
| 5115.50 | 43.69 | PK | 74 | 30.31 | 36.50 | 34.36 | 7.10 | 34.27 | 7.19 |
| 5115.50 | -- | AV | 54 | -- | -- | -- | -- | -- | -- |
| 7320.00 | 44.71 | PK | 74 | 29.29 | 33.02 | 37.46 | 9.23 | 35.00 | 11.69 |
| 7320.00 | -- | AV | 54 | -- | -- | -- | -- | -- | -- |

| Frequency(MHz): | | | 2440 | | Polarity: | | | VERTICAL | |
|-----------------|-------------------------|----|----------------|-------------|------------------|-----------------------|-------------------|--------------------|--------------------------|
| Frequency (MHz) | Emission Level (dBuV/m) | | Limit (dBuV/m) | Margin (dB) | Raw Value (dBuV) | Antenna Factor (dB/m) | Cable Factor (dB) | Pre-amplifier (dB) | Correction Factor (dB/m) |
| 4880.00 | 47.54 | PK | 74 | 26.46 | 42.89 | 33.60 | 6.95 | 35.90 | 4.65 |
| 4880.00 | -- | AV | 54 | -- | -- | -- | -- | -- | -- |
| 5115.50 | 43.50 | PK | 74 | 30.50 | 36.31 | 34.36 | 7.10 | 34.27 | 7.19 |
| 5115.50 | -- | AV | 54 | -- | -- | -- | -- | -- | -- |
| 7320.00 | 45.10 | PK | 74 | 28.90 | 33.41 | 37.46 | 9.23 | 35.00 | 11.69 |
| 7320.00 | -- | AV | 54 | -- | -- | -- | -- | -- | -- |

| Frequency(MHz): | | | 2480 | | Polarity: | | | HORIZONTAL | |
|-----------------|-------------------------|----|----------------|-------------|------------------|-----------------------|-------------------|--------------------|--------------------------|
| Frequency (MHz) | Emission Level (dBuV/m) | | Limit (dBuV/m) | Margin (dB) | Raw Value (dBuV) | Antenna Factor (dB/m) | Cable Factor (dB) | Pre-amplifier (dB) | Correction Factor (dB/m) |
| 4960.00 | 46.50 | PK | 74 | 27.50 | 41.58 | 33.84 | 7.00 | 35.92 | 4.92 |
| 4960.00 | -- | AV | 54 | -- | -- | -- | -- | -- | -- |
| 5150.75 | 43.74 | PK | 74 | 30.26 | 36.47 | 34.44 | 7.12 | 34.28 | 7.27 |
| 5150.75 | -- | AV | 54 | -- | -- | -- | -- | -- | -- |
| 7440.00 | 45.25 | PK | 74 | 28.75 | 33.30 | 37.64 | 9.28 | 34.97 | 11.95 |
| 7440.00 | -- | AV | 54 | -- | -- | -- | -- | -- | -- |

| Frequency(MHz): | | | 2480 | | Polarity: | | | VERTICAL | |
|-----------------|-------------------------|----|----------------|-------------|------------------|-----------------------|-------------------|--------------------|--------------------------|
| Frequency (MHz) | Emission Level (dBuV/m) | | Limit (dBuV/m) | Margin (dB) | Raw Value (dBuV) | Antenna Factor (dB/m) | Cable Factor (dB) | Pre-amplifier (dB) | Correction Factor (dB/m) |
| 4960.00 | 46.89 | PK | 74 | 27.11 | 41.97 | 33.84 | 7.00 | 35.92 | 4.92 |
| 4960.00 | -- | AV | 54 | -- | -- | -- | -- | -- | -- |
| 5150.75 | 44.26 | PK | 74 | 29.74 | 36.99 | 34.44 | 7.12 | 34.28 | 7.27 |
| 5150.75 | -- | AV | 54 | -- | -- | -- | -- | -- | -- |
| 7440.00 | 45.30 | PK | 74 | 28.70 | 33.35 | 37.64 | 9.28 | 34.97 | 11.95 |
| 7440.00 | -- | AV | 54 | -- | -- | -- | -- | -- | -- |

REMARKS:

1. Emission level (dBuV/m) =Raw Value (dBuV)+Correction Factor (dB/m)
2. Correction Factor (dB/m) = Antenna Factor (dB/m)+Cable Factor (dB)-Pre-amplifier Factor
3. Margin value = Limit value- Emission level.
4. -- Mean the PK detector measured value is below average limit.
5. The other emission levels were very low against the limit.
6. RBW1MHz VBW3MHz Peak detector is for PK value; RBW 1MHz VBW10Hz Peak detector is for AV value.

Results of Band Edges Test (Radiated)

| Frequency(MHz): | | | 2402 | | Polarity: | | | HORIZONTAL | |
|-----------------|-------------------------|----|----------------|-------------|------------------|-----------------------|-------------------|--------------------|--------------------------|
| Frequency (MHz) | Emission Level (dBuV/m) | | Limit (dBuV/m) | Margin (dB) | Raw Value (dBuV) | Antenna Factor (dB/m) | Cable Factor (dB) | Pre-amplifier (dB) | Correction Factor (dB/m) |
| 2402.00 | 88.25 | PK | -- | -- | 54.85 | 28.78 | 4.61 | 0.00 | 33.40 |
| 2402.00 | 79.41 | AV | -- | -- | 46.01 | 28.78 | 4.61 | 0.00 | 33.40 |
| 2365.50 | 44.05 | PK | 74 | 29.95 | 10.91 | 28.57 | 4.57 | 0.00 | 33.14 |
| 2365.50 | -- | AV | 54 | -- | -- | -- | -- | -- | -- |
| 2390.00 | 49.32 | PK | 74 | 24.68 | 16.00 | 28.72 | 4.60 | 0.00 | 33.32 |
| 2390.00 | -- | AV | 54 | -- | -- | -- | -- | -- | -- |
| 2400.00 | 50.74 | PK | 74 | 23.26 | 17.35 | 28.78 | 4.61 | 0.00 | 33.39 |
| 2400.00 | -- | AV | 54 | -- | -- | -- | -- | -- | -- |

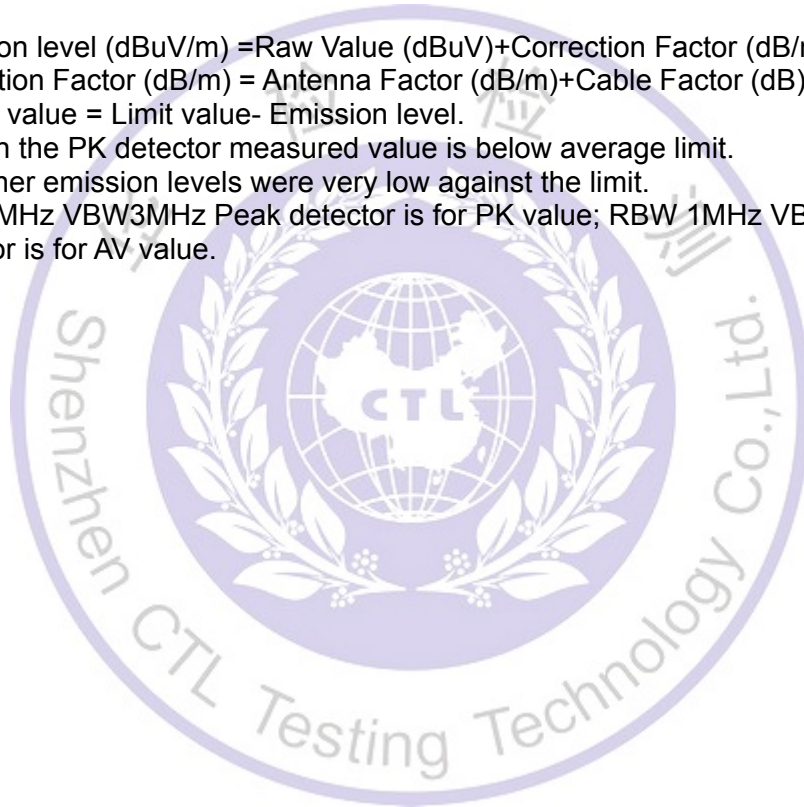
| Frequency(MHz): | | | 2402 | | Polarity: | | | VERTICAL | |
|-----------------|-------------------------|----|----------------|-------------|------------------|-----------------------|-------------------|--------------------|--------------------------|
| Frequency (MHz) | Emission Level (dBuV/m) | | Limit (dBuV/m) | Margin (dB) | Raw Value (dBuV) | Antenna Factor (dB/m) | Cable Factor (dB) | Pre-amplifier (dB) | Correction Factor (dB/m) |
| 2402.00 | 88.85 | PK | -- | -- | 55.45 | 28.78 | 4.61 | 0.00 | 33.40 |
| 2402.00 | 79.91 | AV | -- | -- | 46.51 | 28.78 | 4.61 | 0.00 | 33.40 |
| 2365.50 | 45.15 | PK | 74 | 28.85 | 12.01 | 28.57 | 4.57 | 0.00 | 33.14 |
| 2365.50 | -- | AV | 54 | -- | -- | -- | -- | -- | -- |
| 2390.00 | 49.98 | PK | 74 | 24.02 | 16.66 | 28.72 | 4.60 | 0.00 | 33.32 |
| 2390.00 | -- | AV | 54 | -- | -- | -- | -- | -- | -- |
| 2400.00 | 51.48 | PK | 74 | 22.52 | 18.09 | 28.78 | 4.61 | 0.00 | 33.39 |
| 2400.00 | -- | AV | 54 | -- | -- | -- | -- | -- | -- |

| Frequency(MHz): | | | 2480 | | Polarity: | | | HORIZONTAL | |
|-----------------|-------------------------|----|----------------|-------------|------------------|-----------------------|-------------------|--------------------|--------------------------|
| Frequency (MHz) | Emission Level (dBuV/m) | | Limit (dBuV/m) | Margin (dB) | Raw Value (dBuV) | Antenna Factor (dB/m) | Cable Factor (dB) | Pre-amplifier (dB) | Correction Factor (dB/m) |
| 2480.00 | 88.33 | PK | -- | -- | 54.71 | 28.92 | 4.70 | 0.00 | 33.62 |
| 2480.00 | 79.80 | AV | -- | -- | 46.18 | 28.92 | 4.70 | 0.00 | 33.62 |
| 2483.50 | 49.52 | PK | 74 | 24.48 | 15.89 | 28.93 | 4.70 | 0.00 | 33.63 |
| 2483.50 | -- | AV | 54 | -- | -- | -- | -- | -- | -- |
| 2484.75 | 47.50 | PK | 74 | 26.50 | 13.86 | 28.93 | 4.70 | 0.00 | 33.64 |
| 2484.75 | -- | AV | 54 | -- | -- | -- | -- | -- | -- |
| 2500.00 | 38.22 | PK | 74 | 35.78 | 4.54 | 28.96 | 4.72 | 0.00 | 33.68 |
| 2500.00 | -- | AV | 54 | -- | -- | -- | -- | -- | -- |

| Frequency(MHz): | | | 2480 | | Polarity: | | | VERTICAL | |
|-----------------|-------------------------|----|----------------|-------------|------------------|-----------------------|-------------------|--------------------|--------------------------|
| Frequency (MHz) | Emission Level (dBuV/m) | | Limit (dBuV/m) | Margin (dB) | Raw Value (dBuV) | Antenna Factor (dB/m) | Cable Factor (dB) | Pre-amplifier (dB) | Correction Factor (dB/m) |
| 2480.00 | 88.59 | PK | -- | -- | 54.97 | 28.92 | 4.70 | 0.00 | 33.62 |
| 2480.00 | 79.87 | AV | -- | -- | 46.25 | 28.92 | 4.70 | 0.00 | 33.62 |
| 2483.50 | 49.62 | PK | 74 | 24.38 | 15.99 | 28.93 | 4.70 | 0.00 | 33.63 |
| 2483.50 | -- | AV | 54 | -- | -- | -- | -- | -- | -- |
| 2484.75 | 47.71 | PK | 74 | 26.29 | 14.07 | 28.93 | 4.70 | 0.00 | 33.64 |
| 2484.75 | -- | AV | 54 | -- | -- | -- | -- | -- | -- |
| 2500.00 | 38.64 | PK | 74 | 35.36 | 4.96 | 28.96 | 4.72 | 0.00 | 33.68 |
| 2500.00 | -- | AV | 54 | -- | -- | -- | -- | -- | -- |

REMARKS:

1. Emission level (dBuV/m) =Raw Value (dBuV)+Correction Factor (dB/m)
2. Correction Factor (dB/m) = Antenna Factor (dB/m)+Cable Factor (dB)-Pre-amplifier Factor
3. Margin value = Limit value- Emission level.
4. -- Mean the PK detector measured value is below average limit.
5. The other emission levels were very low against the limit.
6. RBW1MHz VBW3MHz Peak detector is for PK value; RBW 1MHz VBW10Hz Peak detector is for AV value.



3.3. Maximum Conducted Output Power

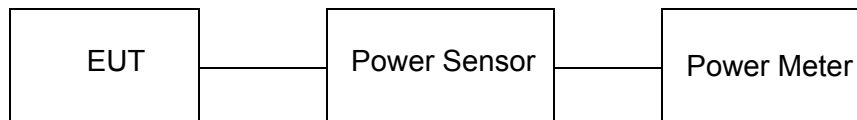
Limit

The Maximum Peak Output Power Measurement is 30dBm.

Test Procedure

Remove the antenna from the EUT and then connect a low loss RF cable from the antenna port to the power sensor.

Test Configuration



Test Results

| BT4.0 | | | | |
|-------|---------|-----------------------|-------------|--------|
| Type | Channel | PK Output power (dBm) | Limit (dBm) | Result |
| GFSK | 00 | -0.713 | 30.00 | Pass |
| | 19 | -1.282 | | |
| | 39 | -1.696 | | |

Note: 1.The test results including the cable lose.

3.4. Power Spectral Density

Limit

For digitally modulated systems, the power spectral density conducted from the intentional radiator to the antenna shall not be greater than 8 dBm in any 3 kHz band during any time interval of continuous transmission.

Test Procedure

1. Use this procedure when the maximum peak conducted output power in the fundamental emission is used to demonstrate compliance.
2. Set the RBW \geq 3 kHz.
3. Set the VBW \geq 3 \times RBW.
4. Set the span to 1.5 times the DTS channel bandwidth.
5. Detector = peak.
6. Sweep time = auto couple.
7. Trace mode = max hold.
8. Allow trace to fully stabilize.
9. Use the peak marker function to determine the maximum power level.
10. If measured value exceeds limit, reduce RBW (no less than 3 kHz) and repeat.
11. The resulting peak PSD level must be 8dBm.

Test Configuration



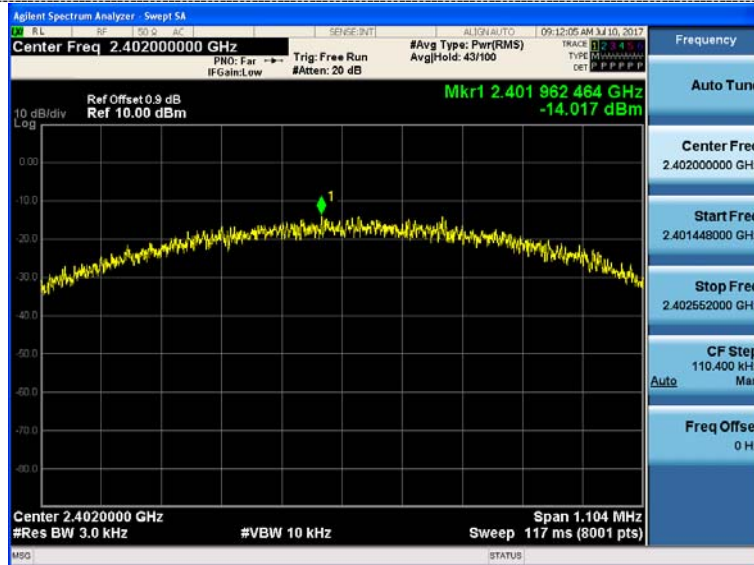
Test Results

BT4.0

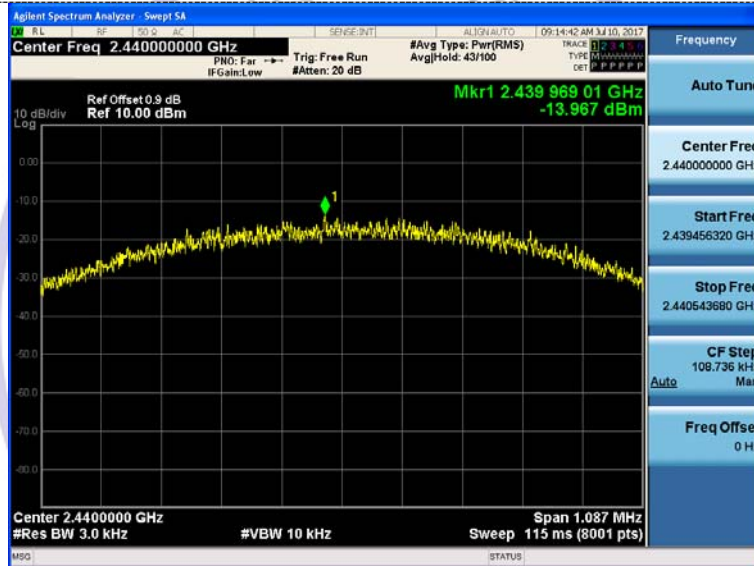
| Type | Channel | Power Spectral Density (dBm/3KHz) | Limit (dBm/3KHz) | Result |
|------|---------|-----------------------------------|------------------|--------|
| GFSK | 00 | -14.017 | 8.00 | Pass |
| | 19 | -13.967 | | |
| | 39 | -14.475 | | |

Test plot as follows:

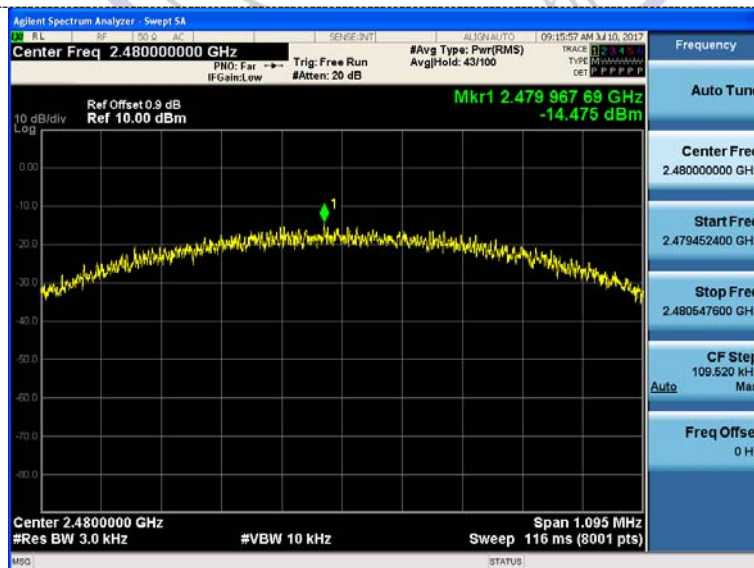
BT4.0



CH00



CH19



CH39

3.5. 6dB Bandwidth

Limit

For digital modulation systems, the minimum 6 dB bandwidth shall be at least 500 kHz

Test Procedure

The transmitter output was connected to the spectrum analyzer through an attenuator. The bandwidth of the fundamental frequency was measured by spectrum analyzer with 100 KHz RBW and 300 KHz VBW. The 6dB bandwidth is defined as the total spectrum the power of which is higher than peak power minus 6dB.

Test Configuration



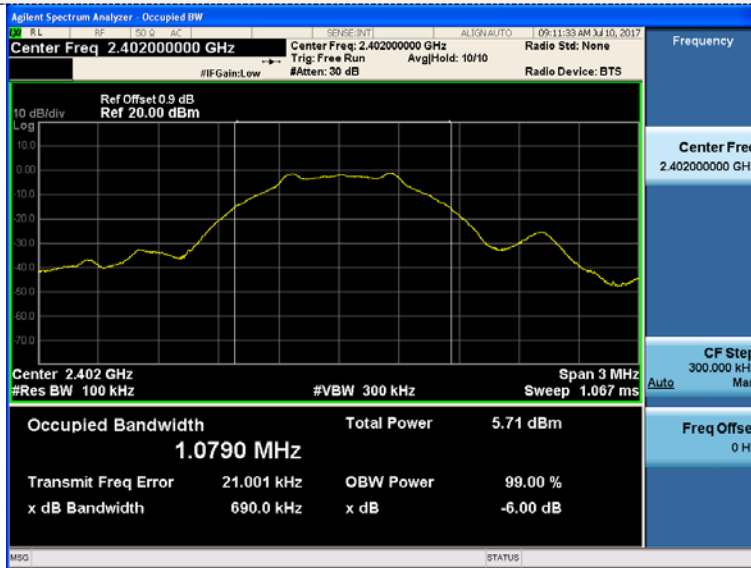
Test Results

BT4.0

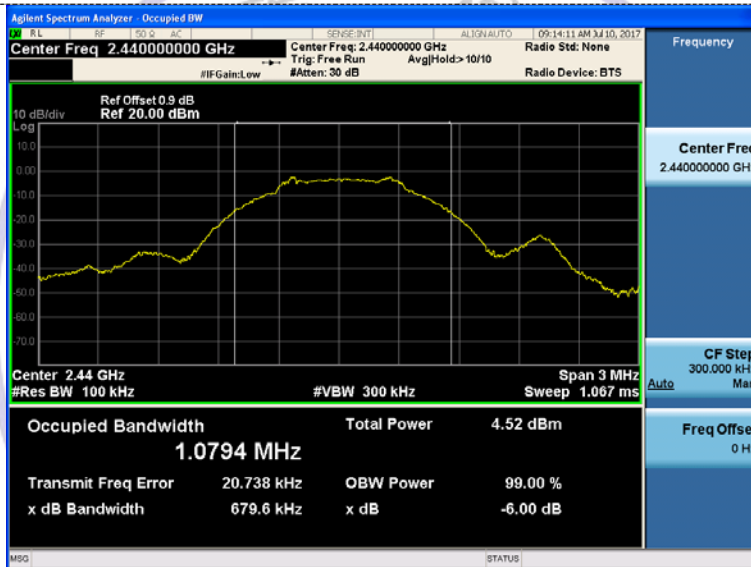
| Type | Channel | 6dB Bandwidth (MHz) | 99% OBW (MHz) | Limit (KHz) | Result |
|------|---------|---------------------|---------------|-------------|--------|
| GFSK | 00 | 0.6900 | 1.0790 | ≥500 | Pass |
| | 19 | 0.6796 | 1.0794 | | |
| | 39 | 0.6845 | 1.0763 | | |

Test plot as follows:

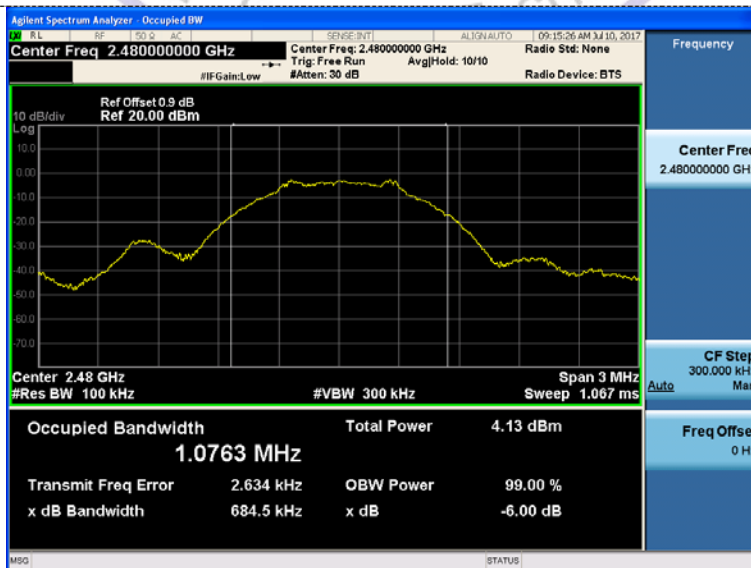
BT4.0



CH00



CH19



CH39

3.6. Out-of-band Emissions

Limit

In any 100 kHz bandwidth outside the frequency band in which the spread spectrum or digitally modulated intentional radiator is operating, the radio frequency power that is produced by the intentional radiator shall be at least 20 dB below that in the 100 kHz bandwidth within the band that contains the highest level of the desired power, based on either an RF conducted or a radiated measurement, provided the transmitter demonstrates compliance with the peak conducted power limits. If the transmitter complies with the conducted power limits based on the use of RMS averaging over a time interval, as permitted under paragraph (b)(3) of this section, the attenuation required under this paragraph shall be 30 dB instead of 20 dB. Attenuation below the general limits specified in §15.209(a) is not required.

Test Procedure

Connect the transmitter output to spectrum analyzer using a low loss RF cable, and set the spectrum analyzer to RBW=100 kHz, VBW= 300 kHz, peak detector, and max hold. Measurements utilizing these settings are made of the in-band reference level, band-edge and out-of-band emissions.

Test Configuration



Test Results

Remark: The measurement frequency range is from 30MHz to the 10th harmonic of the fundamental frequency. The lowest, middle and highest channels are tested to verify the spurious emissions and band-edge measurement data.

Test plot as follows:

BT4.0 CH00

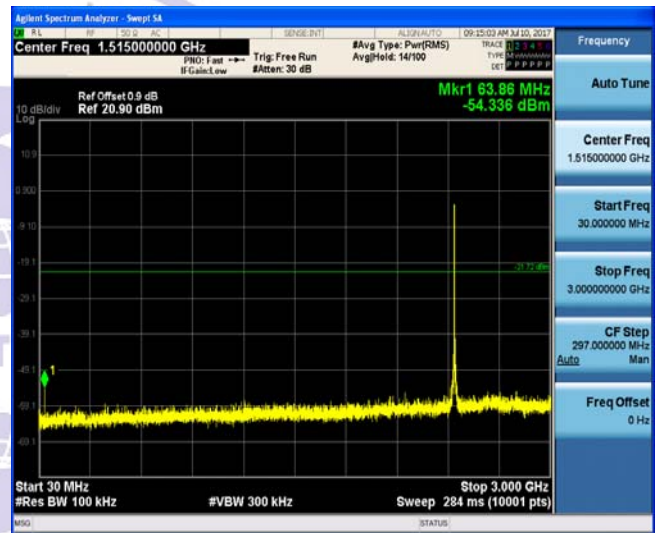
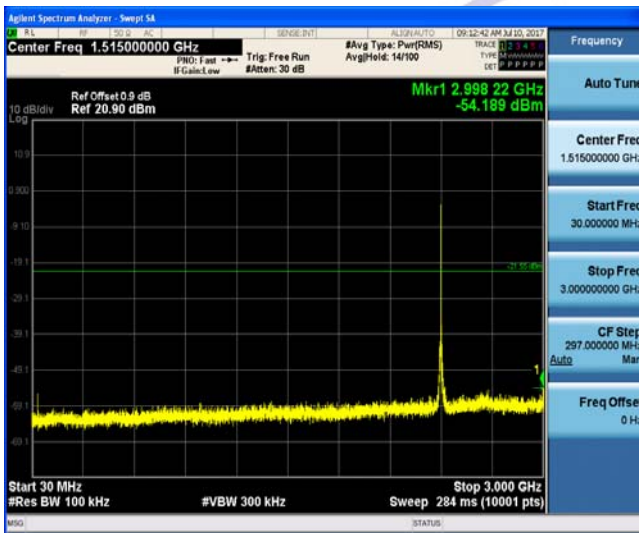


BT4.0 CH19



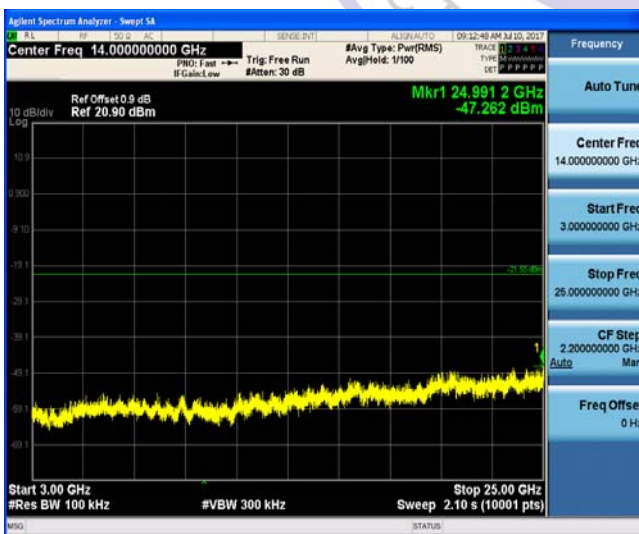
Reference

Reference



30MHz-3GHz

30MHz-3GHz



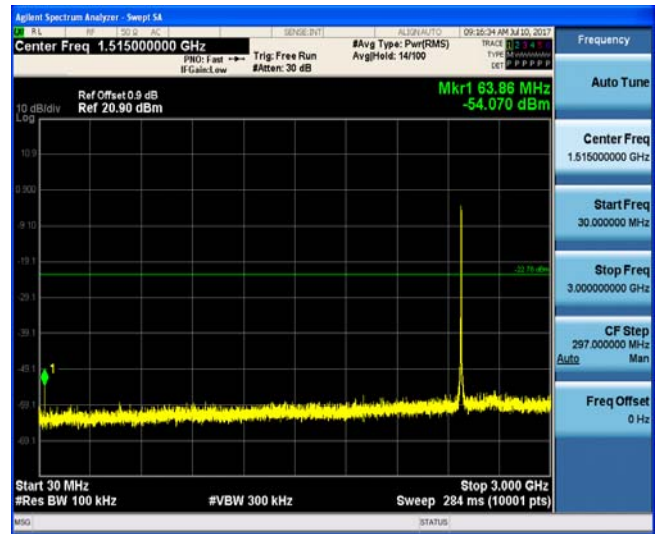
3GHz-25GHz

3GHz-25GHz

BT4.0 CH39



Reference



30MHz-3GHz

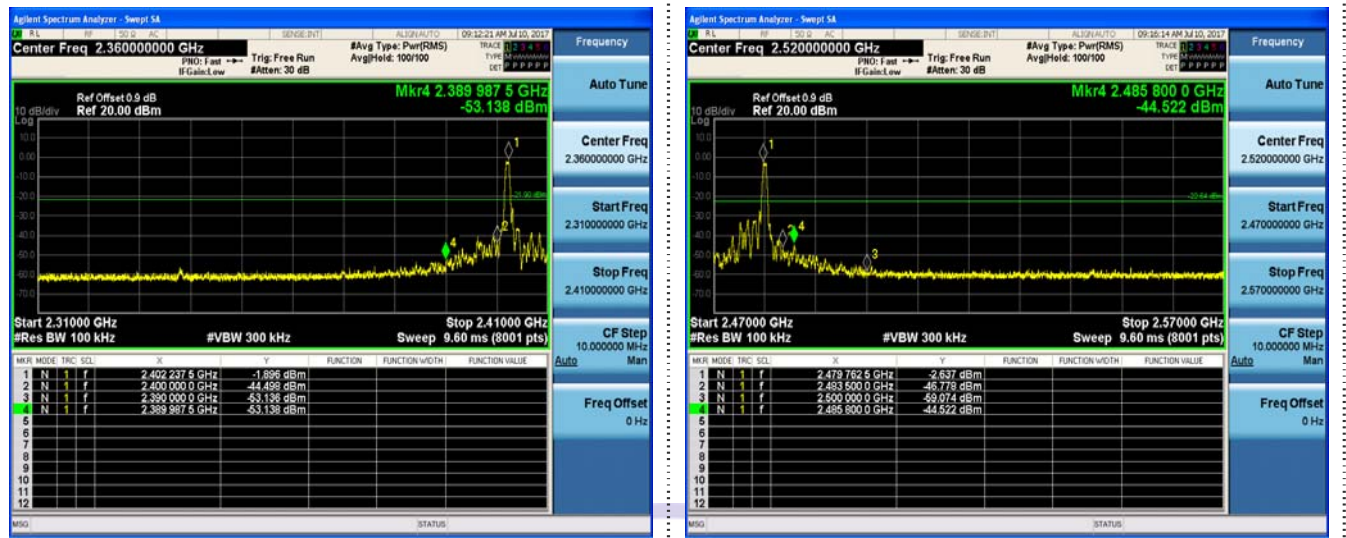


3GHz-25GHz



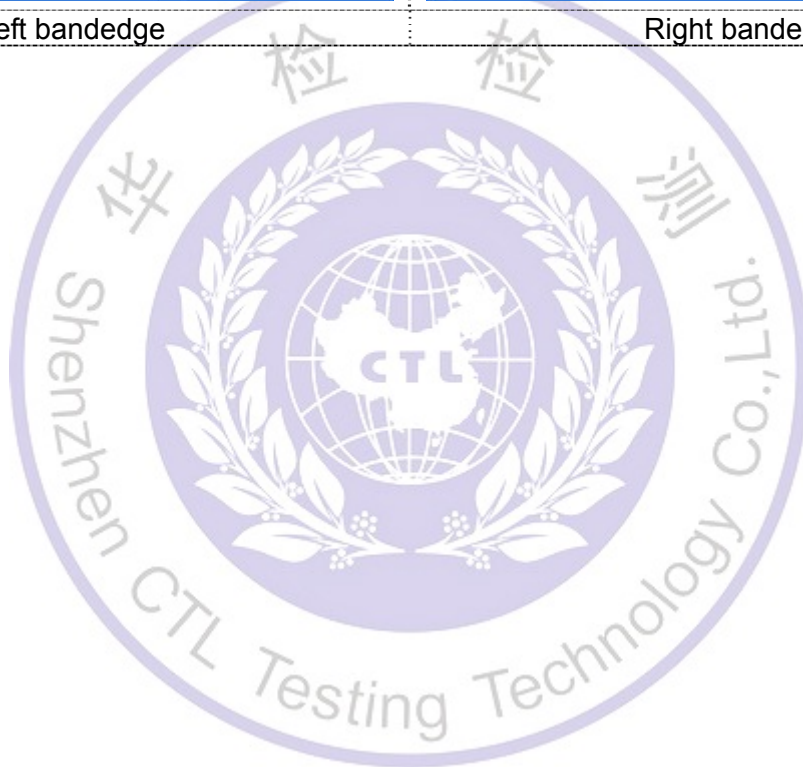
Band-edge Measurements for RF Conducted Emissions:

BT4.0



Left bandedge

Right bandedge



3.7. Antenna Requirement

Standard Applicable

For intentional device, according to FCC 47 CFR Section 15.203:

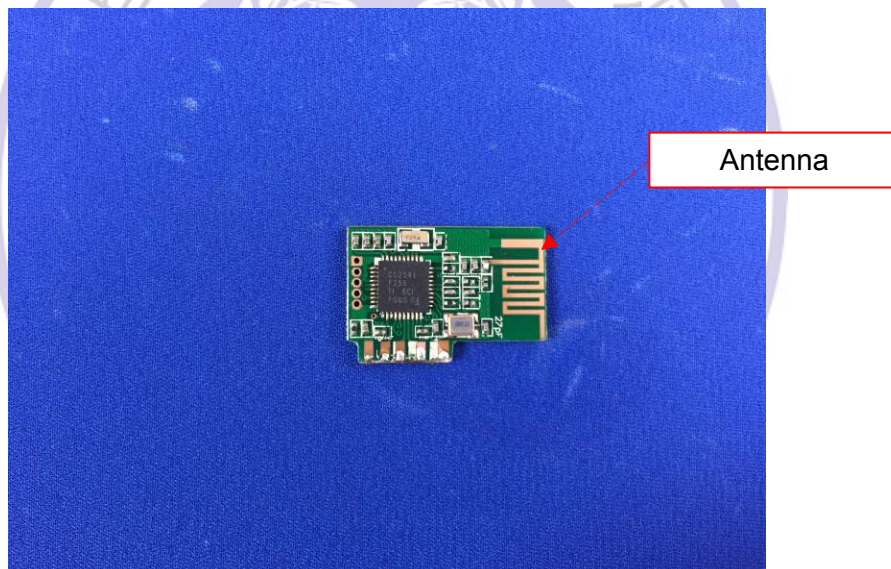
An intentional radiator shall be designed to ensure that no antenna other than that furnished by the responsible party shall be used with the device. The use of a permanently attached antenna or of an antenna that uses a unique coupling to the intentional radiator, the manufacturer may design the unit so that a broken antenna can be replaced by the user, but the use of a standard antenna jack or electrical connector is prohibited

FCC CFR Title 47 Part 15 Subpart C Section 15.247(c) (1) (I):

(i) Systems operating in the 2400-2483.5 MHz band that is used exclusively for fixed. Point-to-point operations may employ transmitting antennas with directional gain greater than 6dBi provided the maximum conducted output power of the intentional radiator is reduced by 1 dB for every 3 dB that the directional gain of the antenna exceeds 6dBi.

Test Result:

The maximum gain of antenna was 0dBi.

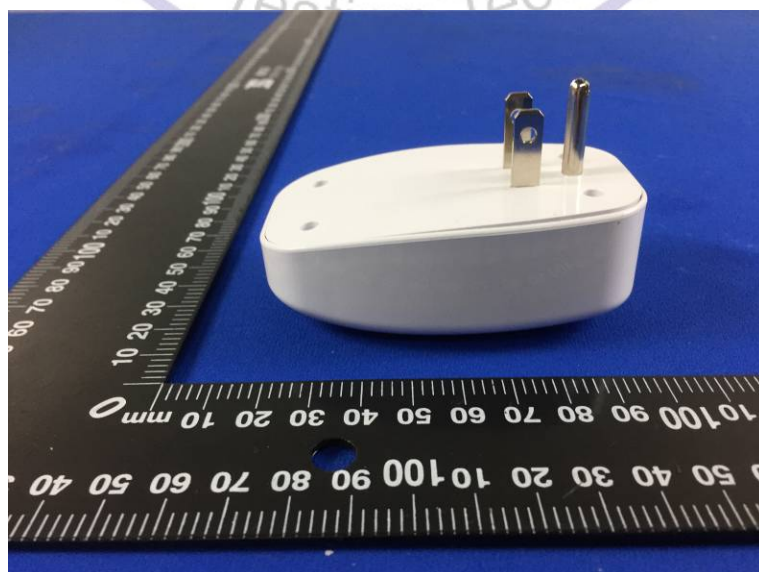
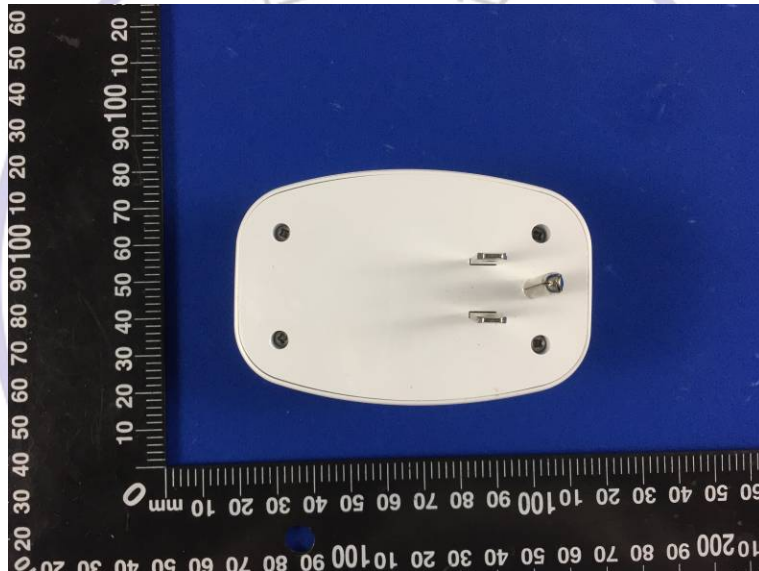


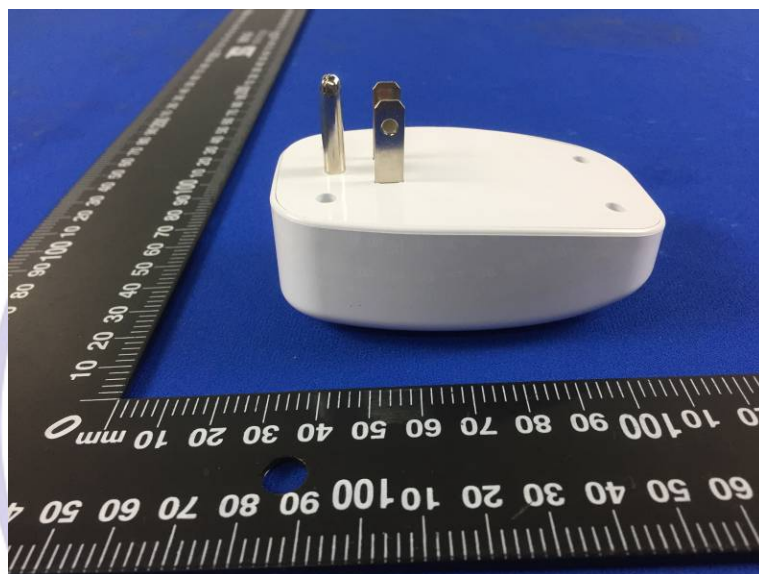
4. Test Setup Photos of the EUT



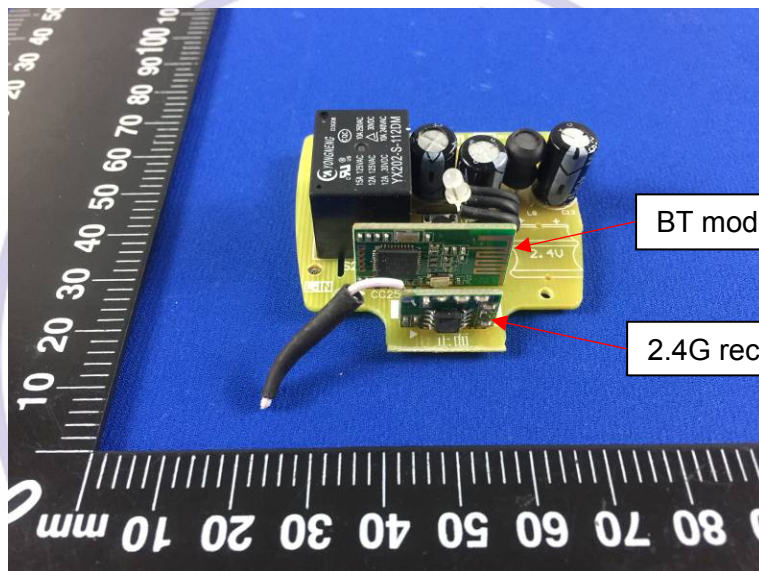
5. External and Internal Photos of the EUT

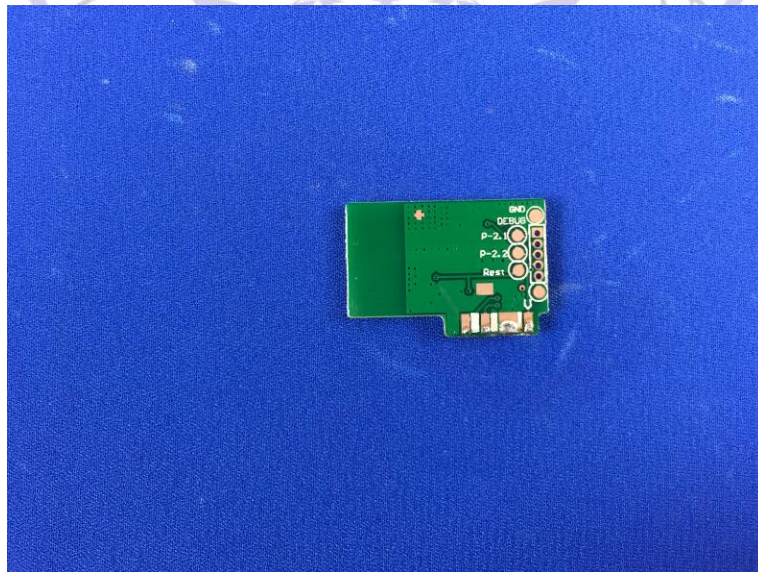
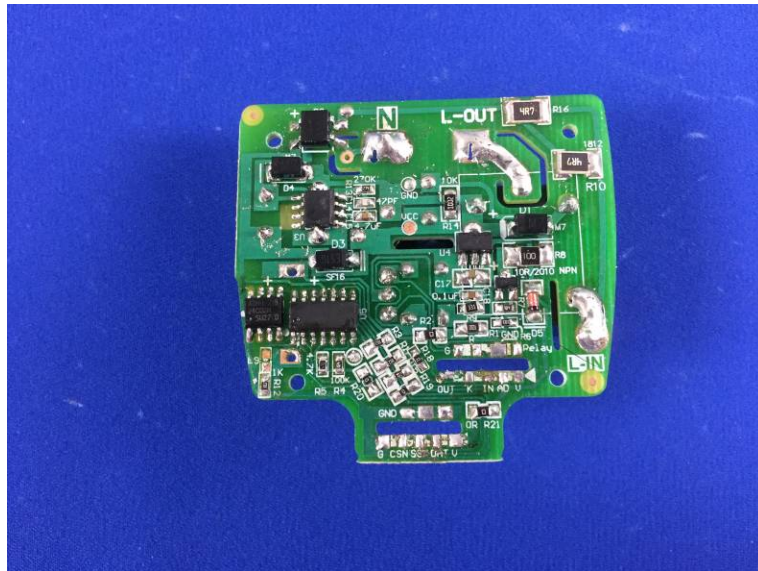
External photos

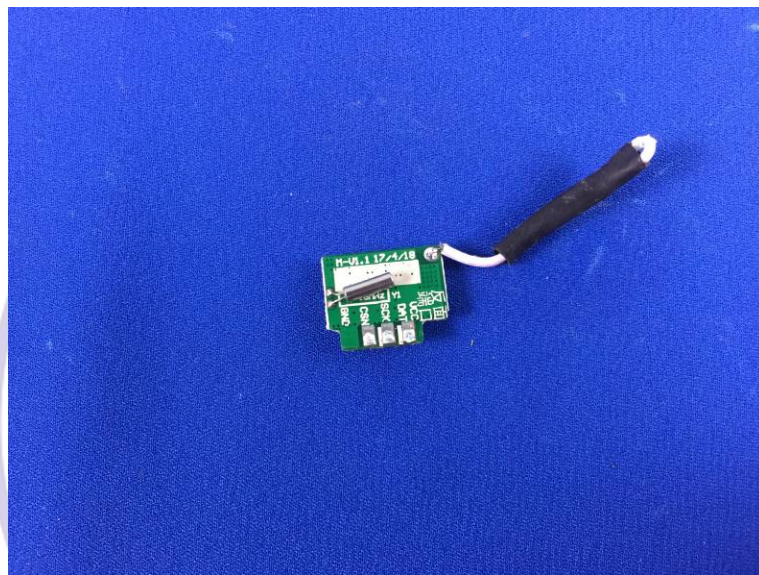
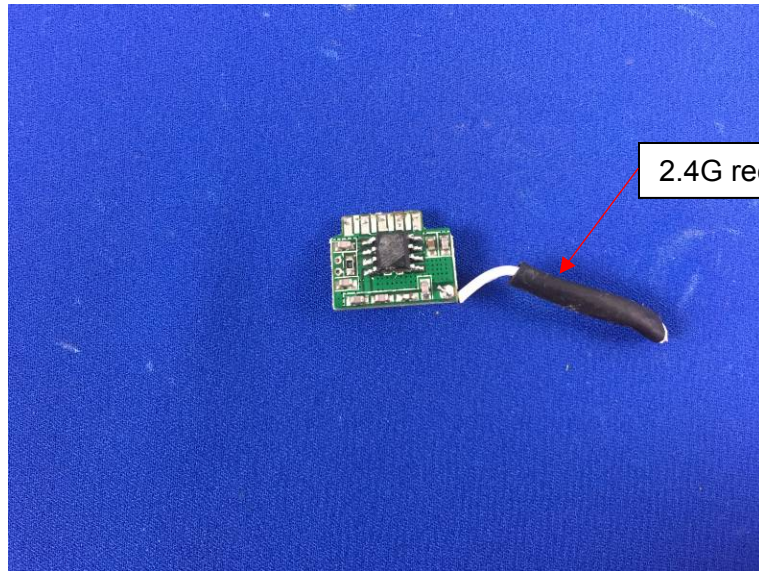




Internal photos







***** End of Report *****

