

# NOLO CV1

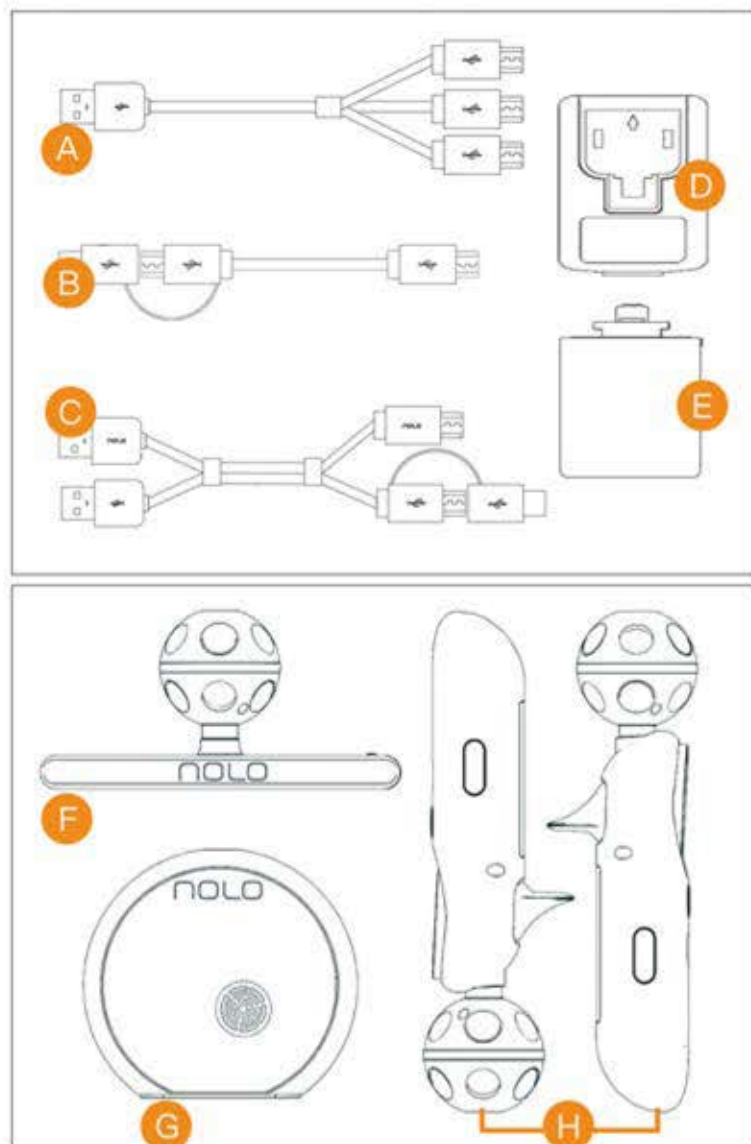
## User Guide

NOLO  
User Guide

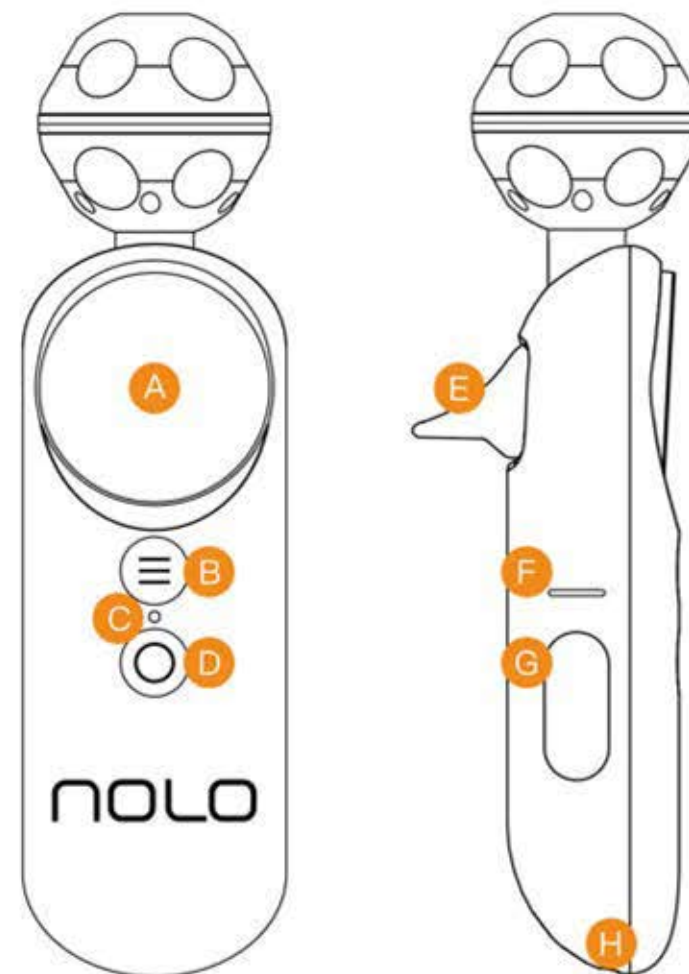
# NOLO

NOLO CV1



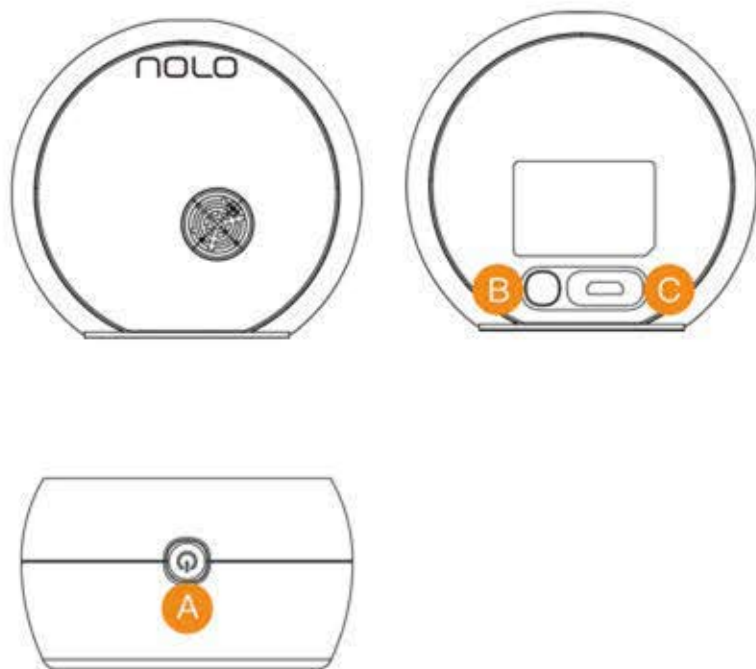


- A. 1in3 Data Cable
- B. OTG Cable
- C. NOLO Cable
- D. USB Plug
- E. Mount
- F. Headset Marker
- G. Base Station
- H. Controllers



- A. Touchpad
- B. Menu Button
- C. LED Light
- D. System Button
- E. Trigger
- F. Pair Button
- G. Grip Button
- H. Micro-USB port

## Base Station

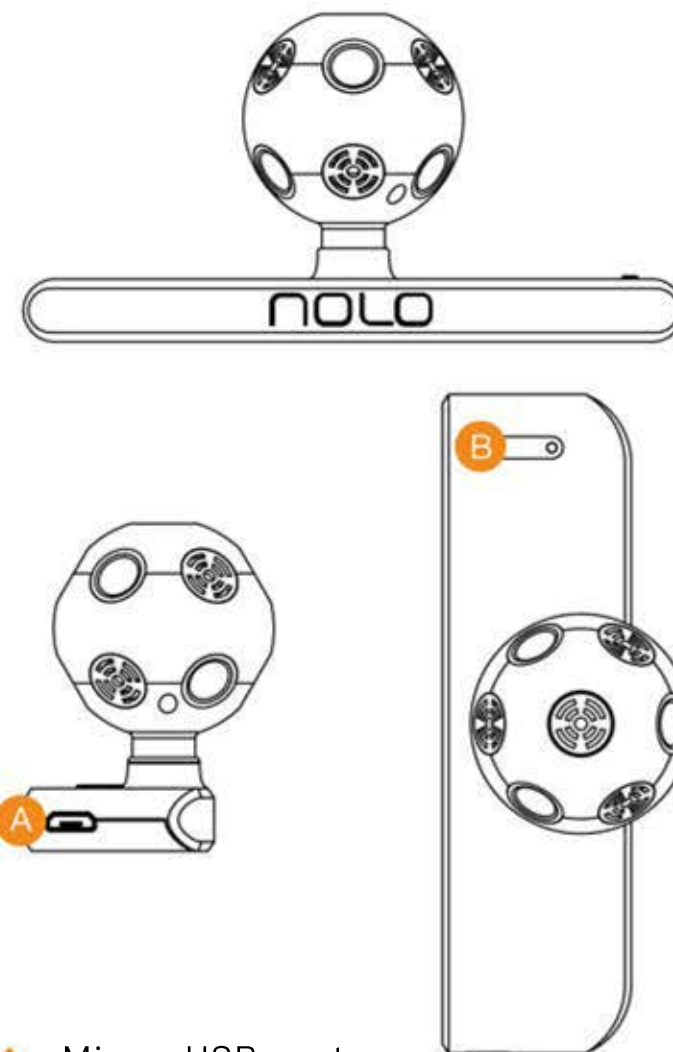


A. Power Button

B. Pair Button

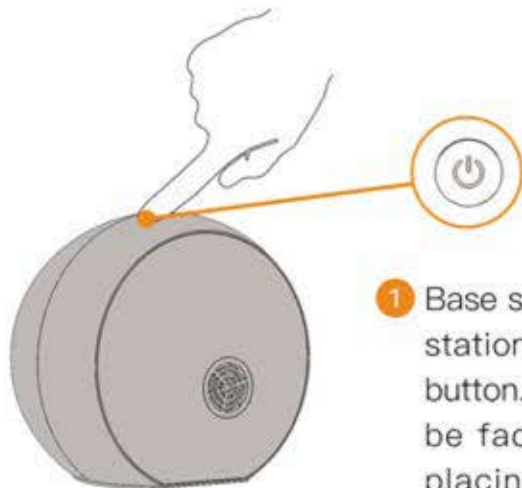
C. Micro-USB port

## Headset Marker

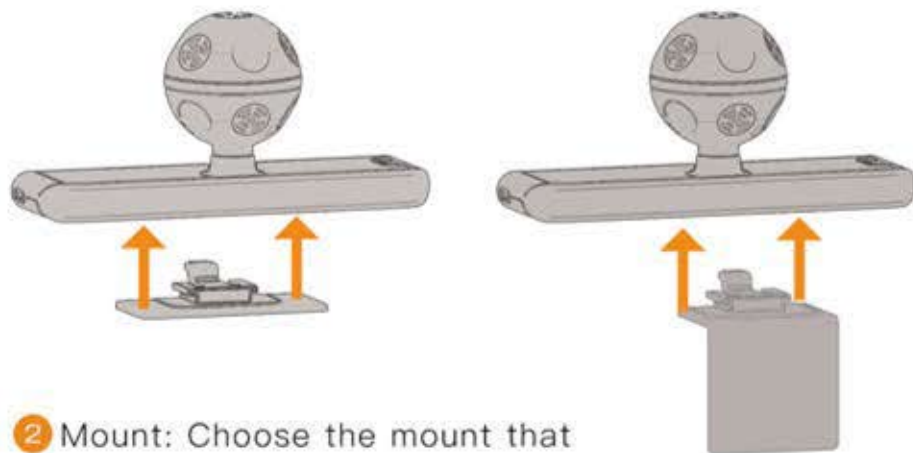


A. Micro-USB port

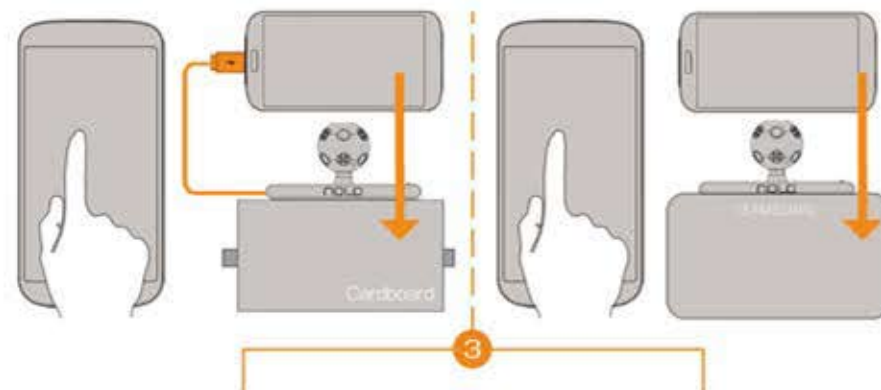
B. Calibration Button



- 1 Base station: Turn on the Base station By pressing the power button. The base station should be facing the play area and placing horizontally.

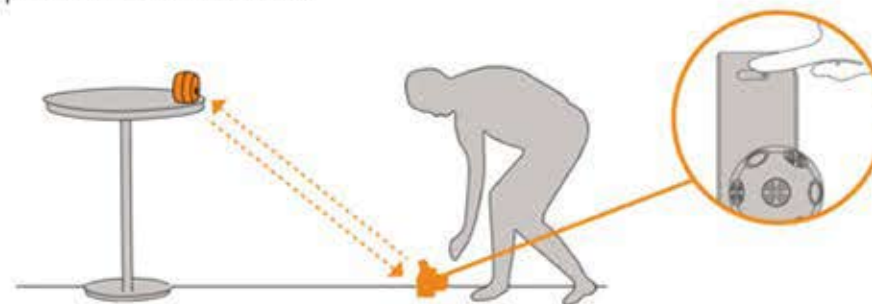


- 2 Mount: Choose the mount that fits your headset, paste it in the middle of the top of the headset with double-sided adhesive tape. Headset marker: Insert the headset marker into the mount.



For Cardboard:  
Open the application for NOLO CV1 on your phone. Connect your phone to the headset Marker via OTG cable, then insert your phone in the headset.

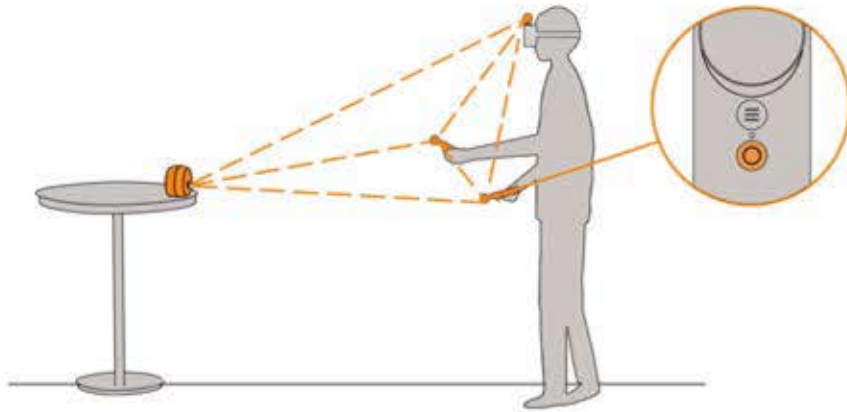
For Gear VR:  
Insert your Samsung smart-phone in Gear VR, then open application for NOLO CV1 in Gear VR store.



- 4 Place the headset on the ground facing the base station. Make sure there is no block between tracking sensor and base station. Press the button on the headset Marker to standardize the ground (recenter).



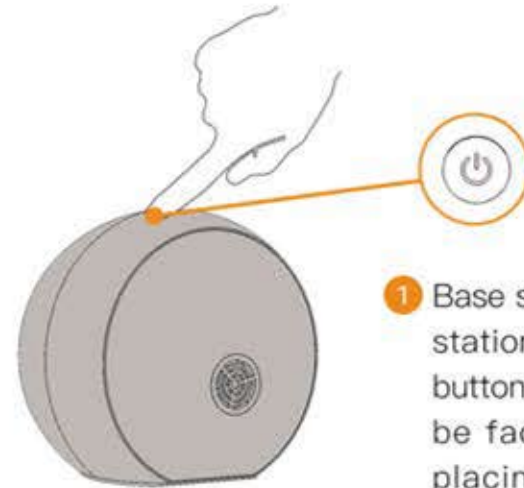
## For PC



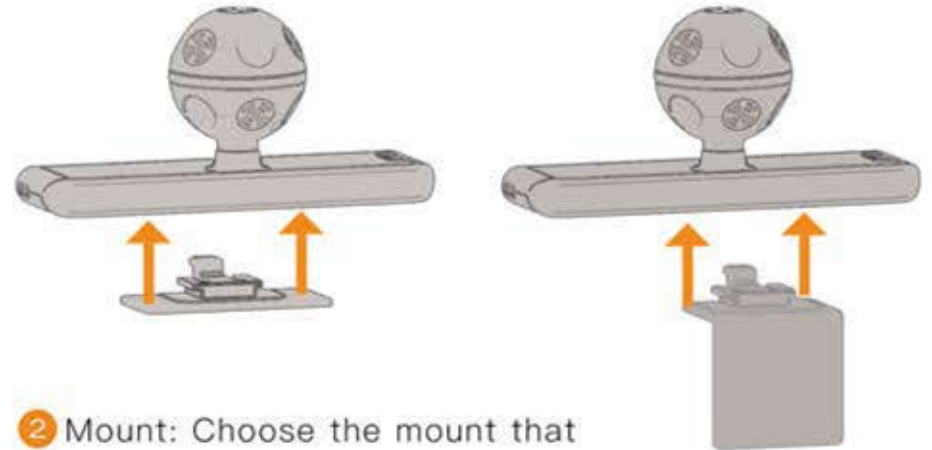
- 5 Controllers: Press the system button to turn them on. Face the base station and put on the headset, then double-click the system button on both controllers to standardize the direction (recenter).



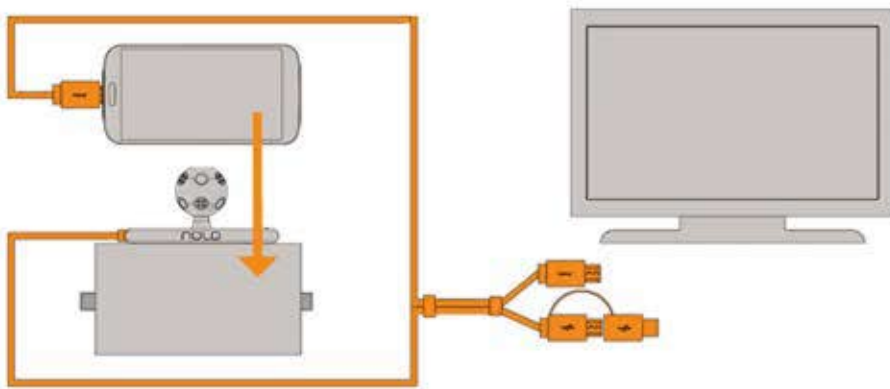
- 6 Enjoy your NOLO



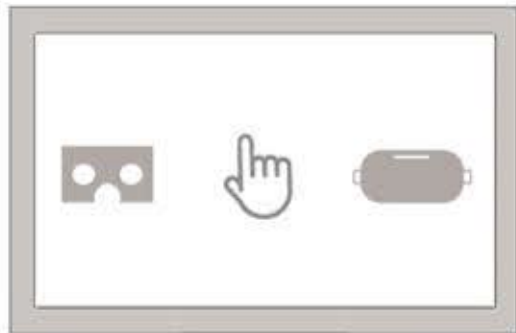
- 1 Base station: Turn on the Base station By pressing the power button. The base station should be facing the play area and placing horizontally.



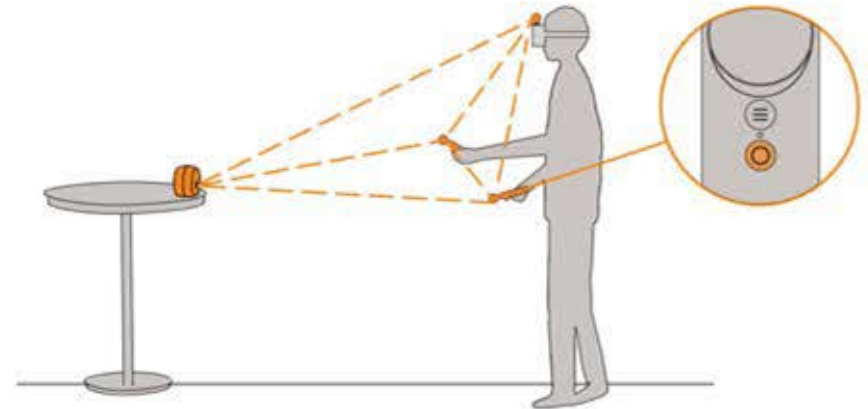
- 2 Mount: Choose the mount that fits your headset, paste it in the middle of the top of the headset with double-sided adhesive tape. Headset marker: Insert the headset marker into the mount.



- 3 Steam VR cable: Use the usb plug with NOLO logo to connect the headset mark to PC, and the other one to connect your phone to PC.



- 4 Open the NOLO app from NOLO official website, choose modes for different VR headsets , then click OK to start.



- 5 Controllers: Press the system button to turn them on. Face the base station and put on the headset , then double-click the system button on both controllers to standardize the direction (recenter).



- 6 Enjoy NOLO

## FCC Warning

This device complies with Part 15 of the FCC Rules. Operation is subject to the following two conditions:

(1) This device may not cause harmful interference, and (2) this device must accept any interference received, including interference that may cause undesired operation.

NOTE 1: This equipment has been tested and found to comply with the limits for a Class B digital device, pursuant to part 15 of the FCC Rules. These limits are designed to provide reasonable protection against harmful interference in a residential installation. This equipment generates, uses and can radiate radio frequency energy and, if not installed and used in accordance with the instructions, may cause harmful interference to radio communications. However, there is no guarantee that interference will not occur in a particular installation. If this equipment does cause harmful interference to radio or television reception, which can be determined by turning the equipment off and on, the user is encouraged to try to correct the interference by one or more of the following measures:

- Reorient or relocate the receiving antenna.
- Increase the separation between the equipment and receiver.
- Connect the equipment into an outlet on a circuit different from that to which the receiver is connected.
- Consult the dealer or an experienced radio/TV technician for help.

NOTE 2: Any changes or modifications to this unit not expressly approved by the party responsible for compliance could void the user's authority to operate the equipment.