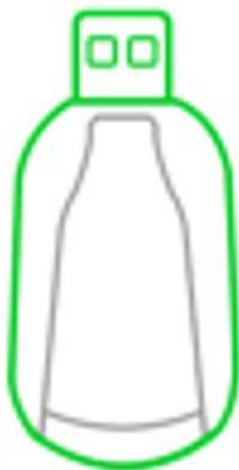


Smart Remote Control with IOS and Android App



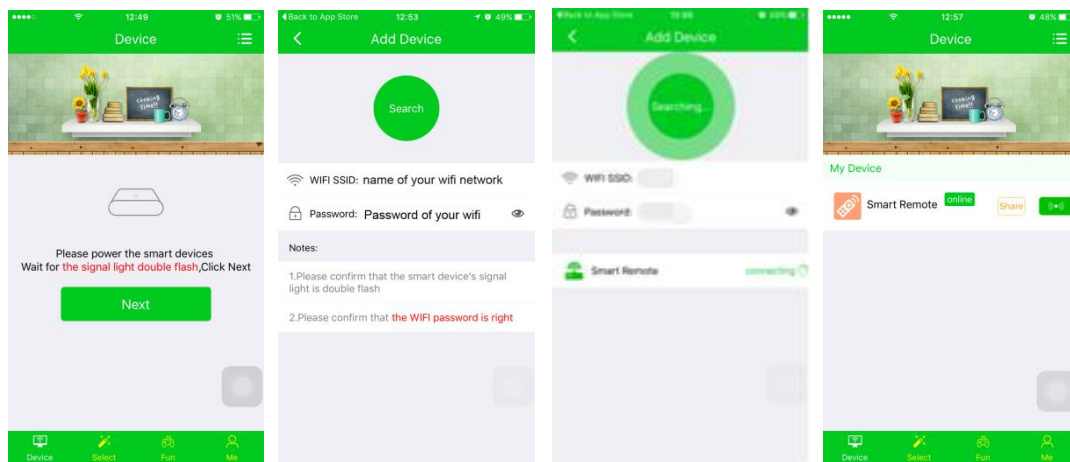
USER MANUAL

Instructions

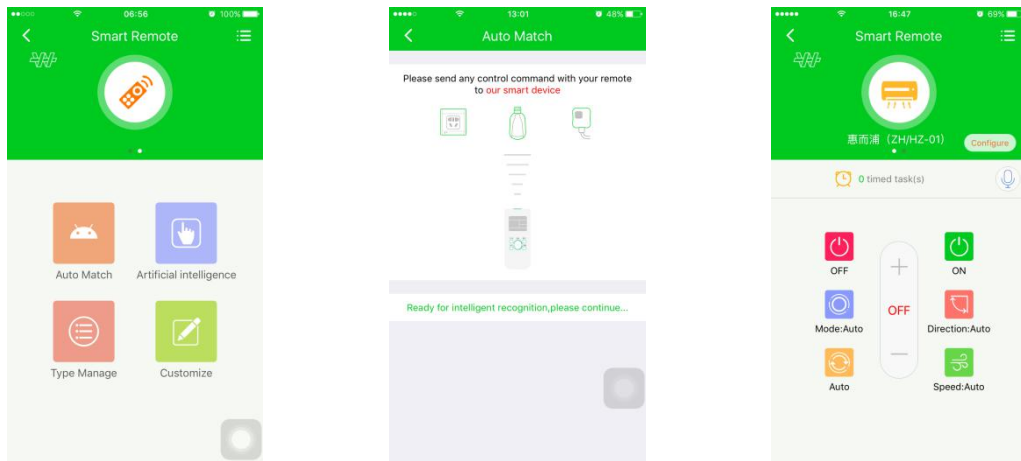
1. Please insert the smart device into computer USB port or 5V/0.5A-5V/2A charger for power supplying (charger is not included).
2. After mobile phone connects to WIFI, scanning QC code(This QC code includes English APP for Android and IOS systems) and downloading APP 'MCN-IOT'.



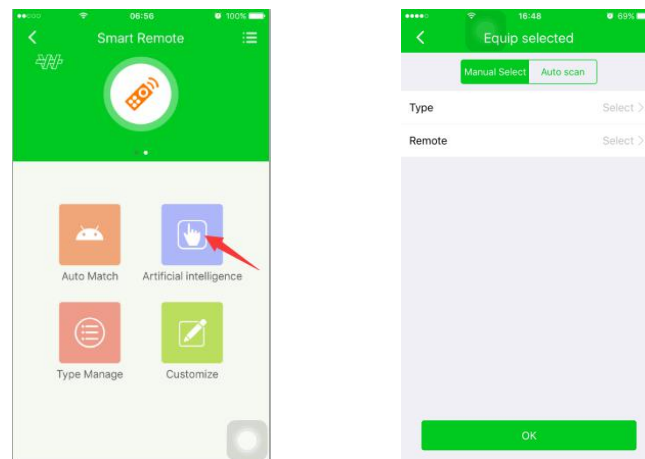
3. Opening APP interface, click 'Next' and type password of WIFI connected by smart phone. Waiting until red indicator light on the smart device double flash (means the red light blinks two times per second), click 'Search', the red light will be off if the smart device is searched successfully, and 'Smart Remote' shows on APP. Click 'Smart Remote' to to enter APP operation interface .



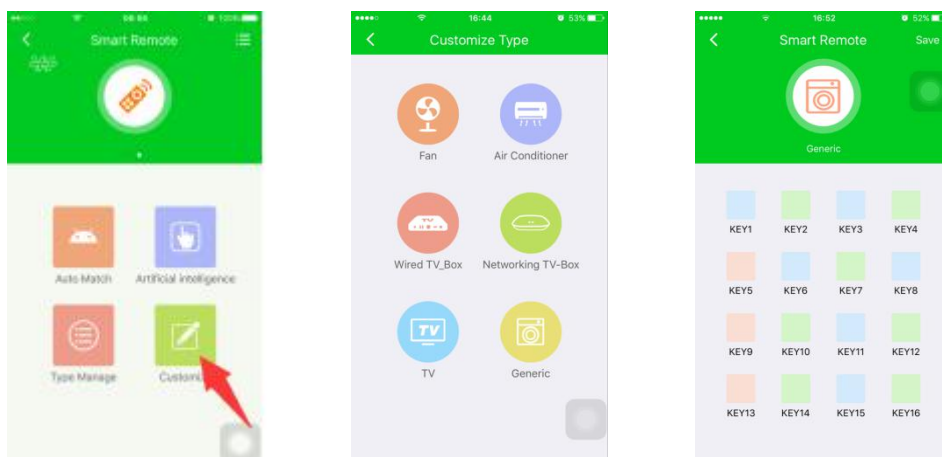
4. Clicking 'Auto Math' to identify original IR remote control of electrical appliances intelligently, then let original remote control close to and point to the smart device within 20 inches, and press any buttons on remote control. APP will show you a remote control surface if matches correctly, then please go to operation step7. It is necessary to press the same button or another button several times if identifying and matching were failed. Do not worry if failed again, please go to step 5 and step6.



5. If you know the appliance's trademark & model No., please enter 'Artificial intelligence' ----- 'Manual Select', select right trademark & model No. of the appliance from the existed items for matching. Or enter 'Auto scan' to match an air conditioner automatically as long as it is in our existed items.



6.If you do not know the the appliance's trademark & model No., and original remote control can not be matched automatically, please come to 'Customize', select right type for appliance, if there is no right type, enter 'Generic'. APP will show you remote control style screen, and there are many new buttons waiting for matching, please match correctly with each button function of original remote control, what is more, you can rename buttons' name.



7. On smart remote control surface, your smart phone becomes a smart remote control, now your appliances can be controlled locally and remotely by clicking buttons on APP .

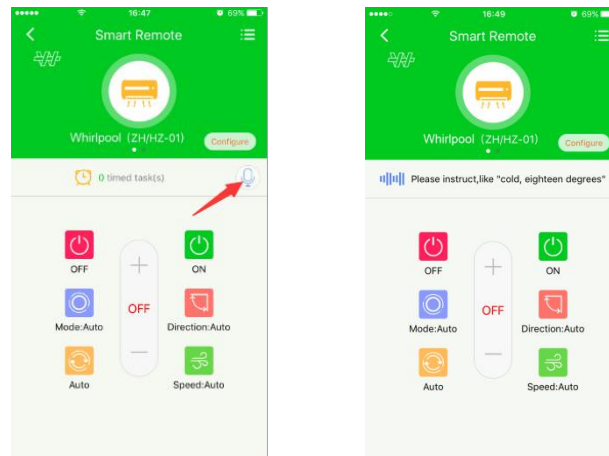
Air conditioners can be controlled by your voice, too. Other electrical appliances can not be controlled by voice currently.

For example, you can click microphone icon and talk to your smart phone:

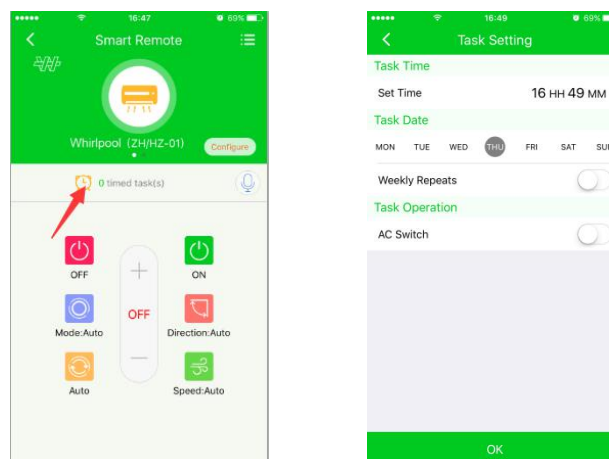
on, Power on, turn on,

off, Power off, turn off,

Cold /Cool eighteen degrees...

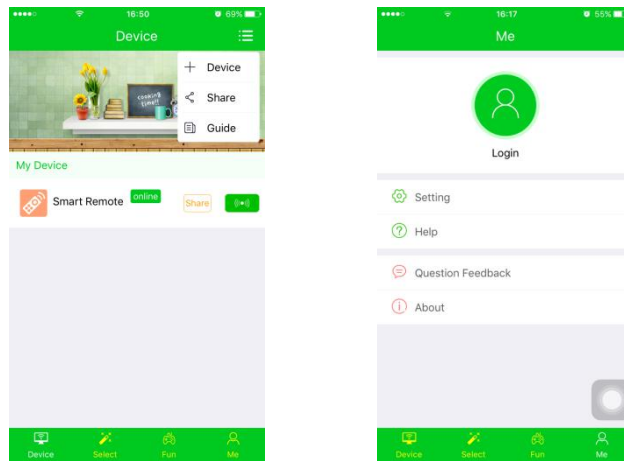


Timing function for air conditioners as follow,



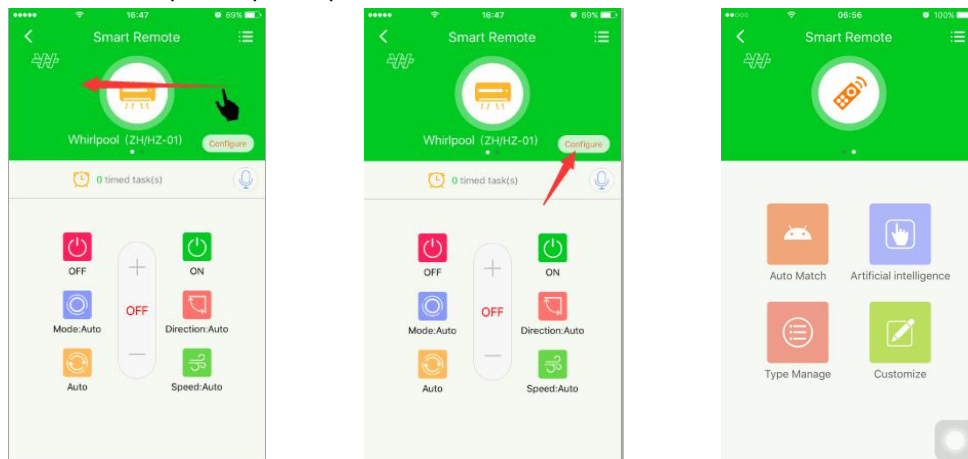
8 . You can share with your family and friends after setting function successfully.

Each smartphone should apply an account using cellphone number. Sharing time can be set for one day, two days, one week or forever. Example as follow:

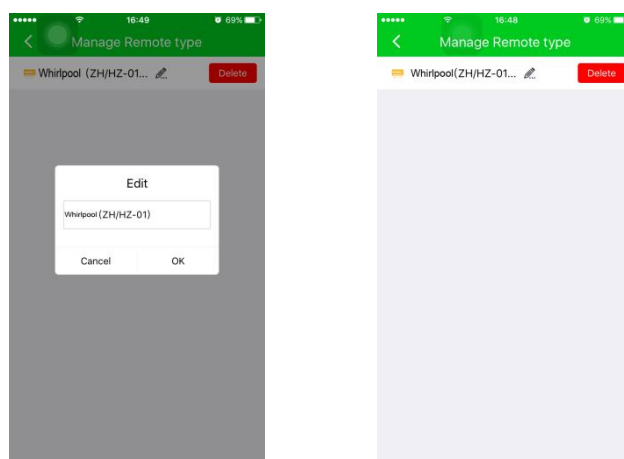


9. How to add more smart remote controls of electrical appliances

Clicking 'Configure' or slide the remote icon to the left, ready for matching a new remote control, after that, follow step 4, step5, step6.

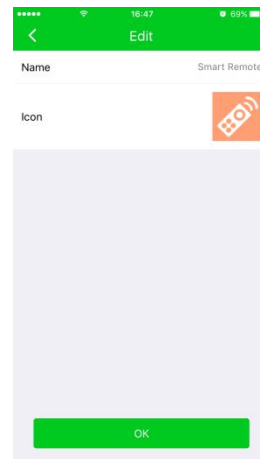
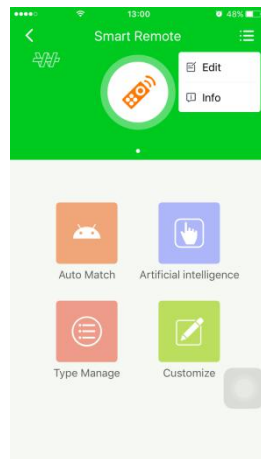


10. Enter 'Type Manage' surface to rename or delete the remote controls of one smart device from APP.

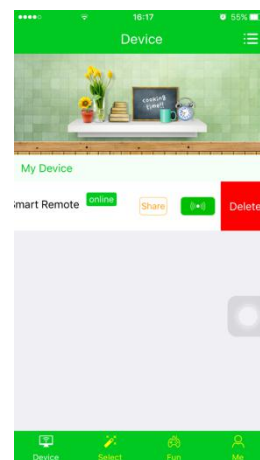
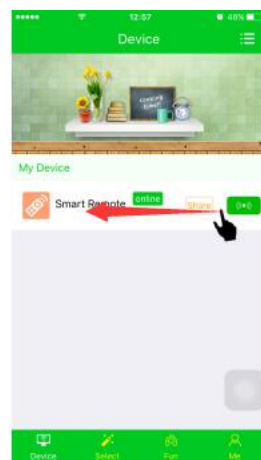


11. Rename or delete the smart device from APP

If you purchased several smart devices, renaming them can help you to distinguish them easily.



If you intend to delete the smart device and its remote controls from APP, press and slide the name of the smart device to the left, then clicking 'Delete'.



FCC Caution:

This device complies with part 15 of the FCC Rules. Operation is subject to the following two conditions: (1) This device may not cause harmful interference, and (2) this device must accept any interference received, including interference that may cause undesired operation.

Any Changes or modifications not expressly approved by the party responsible for compliance could void the user's authority to operate the equipment.

Note: This equipment has been tested and found to comply with the limits for a Class B digital device, pursuant to part 15 of the FCC Rules. These limits are designed to provide reasonable protection against harmful interference in a residential installation. This equipment generates uses and can radiate radio frequency energy and, if not installed and used in accordance with the instructions, may cause harmful interference to radio communications. However, there is no guarantee that interference will not occur in a particular installation. If this equipment does cause harmful interference to radio or television reception, which can be determined by turning the equipment off and on, the user is encouraged to try to correct the interference by one or more of the following measures:

- Reorient or relocate the receiving antenna.
- Increase the separation between the equipment and receiver.
- Connect the equipment into an outlet on a circuit different from that to which the receiver is connected.
- Consult the dealer or an experienced radio/TV technician for help.