

Basic parameters

Capacity: 500ml (G1)/400ml (G2)  
Material: food-grade 304 stainless steel, aluminum alloy and food-grade PP  
Specification: 216\*66mm (G2) and 235\*70mm (G1)  
Display: LED lattice screen  
Battery: CR2477\*2  
Bluetooth: 4.0

This device complies with Part 15 of the FCC Rules. Operation is subject to the following two conditions: (1) this device may not cause harmful interference, and (2) this device must accept any interference received, including interference that may cause undesired operation.  
Changes or modifications not expressly approved by the party responsible for compliance could void the user's authority to operate the equipment.  
NOTE: This equipment has been tested and found to comply with the limits for a Class B digital device, pursuant to Part 15 of the FCC Rules. These limits are designed to provide reasonable protection against harmful interference in a residential installation. This equipment generates, uses instructions, may cause harmful interference to radio communications. However, there is no guarantee that interference will not occur in a particular installation. If this equipment does cause harmful interference to radio or television reception, which can be determined by turning the equipment off and on, the user is encouraged to try to correct the interference by one or more of the following measures:  
-- Reorient or relocate the receiving antenna.  
-- Increase the separation between the equipment and receiver.  
-- Connect the equipment into an outlet on a circuit different from that to which the receiver is connected.  
-- Consult the dealer or an experienced radio/TV technician for help

Portable Smart Cup G1/G2

Manufacturer: SGUAI (Shenzhen) Smart Technology Co., Ltd.  
Address: Building A, Xixiang Yintian Industrial Park, Bao' an District, Shenzhen

Made in China

Android 4.0 or above

iOS 9.0 or above

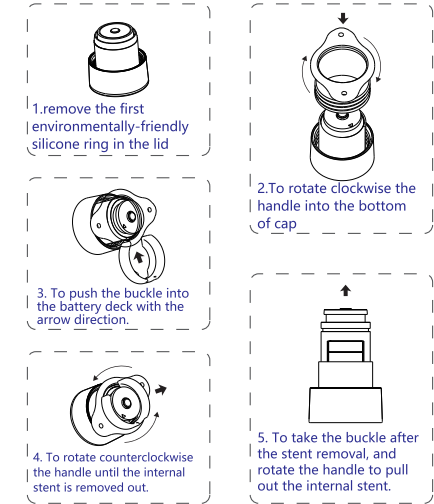
Bluetooth 4.0

QC

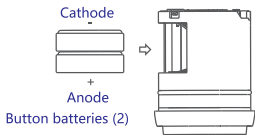
PASS

The text has been carefully checked. In case of any printing error or omission, the company will not bear any consequence. The actual product will prevail.

Battery Replacement Steps



2 Install two button batteries, with the cathodes on anodes. The batteries are disposable consumables and should be replaced with the same button batteries.  
**Note:** Pay attention to the cathodes and anodes of batteries.



Notes

- Do not expose the tumbler to high-temperature sunlight.
- Children under the age of four must not directly drink water in the tumbler.
- Do not remove internal batteries except for replacement.
- Do not directly clean the whole tumbler in boiling water.
- Do not pour too much drink into the tumbler in order to prevent overflow after closing.

Commitment to services

- Contact the dealer or our after-sales center for after-sales services. If any quality problem occurs in normal operation within the warranty period (within 7 days from the date of purchase) or non-artificial fault occurs in normal operation, keep the appearance of the product, accessories and package complete (repair the damaged appearance). After the fault is confirmed by testing, the consumer can select exchange or repair.
- The purchase time will be subject to the invoice or receipt issued on the date of purchase.
- If the appearance of the purchased product is damaged artificially, the exchange will be invalid, and only the warranty service will be provided.
- In the following cases, the exchange and warranty will be invalid and only the limited repair service will be provided:  
(1) Artificial damage, including improper use;  
(2) Repair or modification by the user without permission, or repair by the unauthorized unit;  
(3) Damage caused by improper transportation after purchase;  
(4) Damage caused by other force majeure.

To offer you a better service, please fill in below information

Item Information: G1( ) G2( )

User Name:

Contact Number:

Mailing Address:

Purchase Platform:

Date of Purchase:

Invoice Number:

Fault Description:

Portable Smart Cup  
G1/G2  
Quick Tour



The bottle lid is only limited to living water resistant!  
When cleaning, please do not soak or boil in water, and do not wash with hot-water!

Instructions

- Touch the lid once. The lid will provide green, orange and red light as prompts according to the temperature.  
  
1. Green light: (cold water)  
The water temperature is below 35°C, meeting the drinking needs of most of users.  
  
2. Orange light: (warm water)  
The water temperature is 36-60°C. The user should wait or the user needing hot water may have a try.  
  
3. Red light: (hot water)  
The water temperature is above 60°C. Water is too hot to drink immediately.  
  
2 Touch the lid again. The lid screen will display the current water temperature, more intuitively reminding you of the best temperature of drinking water. photo 1  
  
Photo 1 Photo 2  
  
3 Touch the lid for the third time. The lid screen will display the residual electric quantity in the electric quantity icon form. photo 2  
  
4 Overdue water prompt: if water in the tumbler is not drunk within 16h (the lid is not touched), the screen will flicker for 5s at the frequency of once every 0.5s, and the red light will be normally ON for 5s. In this case, any touch will be invalid. Normal conditions f the tumbler will be restored in 5s.  
  
5 Search tumbler: click "Search" in the right upper corner of the tumbler menu of APP, the screen of the connected tumbler will flicker five times (once every 0.5s) in green.

APP Installation

The Android phone supporting 4.0 smart equipment must meet two conditions:  
1. The hardware supports Bluetooth 4.0;  
2. The Android operating system of Android 4.3 or above must be installed.Pay attention to the latest information of the mobile phone manufacturer, and promptly upgrade the operating system to Android 4.3 or above.  
The IPHONE supporting 4.0 smart equipment must meet two conditions:  
1. The hardware supports Bluetooth 4.0;  
2. The iOS operating system of iOS9.1 or above must be installed.  
Pay attention to the latest information of the mobile phone manufacturer, and promptly upgrade the operating system to iOS9.1 or above.



Android /IOS

Mobile Phone Binding

- Drinking information can be easily transmitted to the mobile phone from SGUAI tumbler with Bluetooth 4.0, Android 4.3 system or above and IOS9.1 system or above. You can view and manage the drinking plan via the mobile phone, and obtain the evaluation of and suggestions on your own drinking habits from APP.



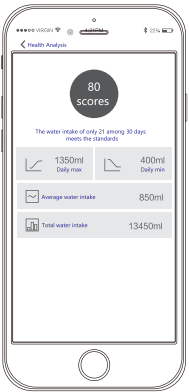
Drinking Data

- The healthy and practical drinking plan and contents will be provided for you according to the drinking data statistics, local weather and real-time temperature.



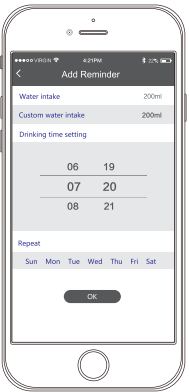
Health Analysis

- The mobile APP will record drinking data. You can view your own drinking health analysis. Suggestions and recommendations of experts will also be provided.



Drinking Prompts

- The water metabolism can be calculated according to your own information, the environment and weather. If you do not drink enough water, the light and APP will provide prompts, to help you cultivate a good drinking habit.



Battery Replacement

- To replace batteries, remove the first environmentally-friendly silicone ring in the lid, remove small screws with the accompanying screwdriver, and pull out the battery holder. Then replace the batteries. Two 3.7V button batteries are applied, with the service life of about 12 months under normal conditions.

