



**In accordance with the requirements of
FCC 47 CFR Part 2(2.1093), ANSI/IEEE C95.1-1992 and
IEEE Std 1528-2013**

FCC SAR EVALUATION REPORT

Product Name : Tablet projector

Trademark : HEXA

Model Name : Eclipse 1

Serial Model : n/a

Report No. : NTEK-2016NT12220836HF

FCC ID : 2ALLP-ECLIPSE1

Prepared for

Hallmark Global LTD DBA HEXA

Unit 218, 1110 Finch ave West, Toronto, Ontario, Canada, M3J 2T2

Prepared by

NTEK Testing Technology Co., Ltd.

1/F, Building E, Fenda Science Park, Sanwei Community, Xixiang Street,
Bao'an District, Shenzhen 518126 P.R.China.

Tel.: +86-755-61156588 Fax.: +86-755-61156599

Website: <http://www.ntek.org.cn>

TEST RESULT CERTIFICATION

Applicant's name: Hallmark Global LTD DBA HEXA

Address.....: Unit 218, 1110 Finch ave West, Toronto, Ontario, Canada, M3J 2T2

Manufacturer's Name.....: Hallmark Global LTD DBA HEXA

Address.....: Unit 218, 1110 Finch ave West, Toronto, Ontario, Canada, M3J 2T2

Product description

Product name.....: Tablet projector

Trademark: HEXA

Model and/or type reference .: Eclipse 1

Serial Model.....: n/a

FCC 47 CFR Part 2(2.1093)

ANSI/IEEE C95.1-1992

Standards: IEEE Std 1528-2013

Published RF exposure KDB procedures

This device described above has been tested by Shenzhen NTEK. In accordance with the measurement methods and procedures specified in IEEE Std 1528-2013 and KDB 865664 D01. Testing has shown that this device is capable of compliance with localized specific absorption rate (SAR) specified in FCC 47 CFR Part 2(2.1093) and ANSI/IEEE C95.1-1992. The test results in this report apply only to the tested sample of the stated device/equipment. Other similar device/equipment will not necessarily produce the same results due to production tolerance and measurement uncertainties.

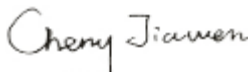
This report shall not be reproduced except in full, without the written approval of Shenzhen NTEK, this document may be altered or revised by Shenzhen NTEK, personal only, and shall be noted in the revision of the document.


Date of Test

Date (s) of performance of tests: Mar. 15, 2017 ~ Mar. 17, 2017

Date of Issue: Mar. 24, 2017

Test Result.....: **Pass**

Prepared By : 
(Test Engineer) : _____
(Cheng Jiawen)

Approved By : 
(Lab Manager) : _____
(Sam Chen)

※ ※ Revision History ※ ※

| REV. | DESCRIPTION | ISSUED DATE | REMARK |
|---------|-----------------------------|---------------|--------------|
| Rev.1.0 | Initial Test Report Release | Mar. 24, 2017 | Cheng Jiawen |
| | | | |
| | | | |
| | | | |

TABLE OF CONTENTS

| | |
|--|----|
| 1. General Information | 6 |
| 1.1. RF exposure limits | 6 |
| 1.2. Statement of Compliance..... | 7 |
| 1.3. EUT Description | 8 |
| 1.4. Test specification(s) | 9 |
| 1.5. Ambient Condition..... | 9 |
| 2. SAR Measurement System | 10 |
| 2.1. SATIMO SAR Measurement Set-up Diagram | 10 |
| 2.2. Robot | 11 |
| 2.3. E-Field Probe..... | 12 |
| 2.3.1. E-Field Probe Calibration..... | 12 |
| 2.4. SAM phantoms | 13 |
| 2.4.1. Technical Data | 13 |
| 2.5. Device Holder | 15 |
| 2.6. Test Equipment List | 16 |
| 3. SAR Measurement Procedures | 18 |
| 3.1. Power Reference..... | 18 |
| 3.2. Area scan & Zoom scan | 18 |
| 3.3. Description of interpolation/extrapolation scheme | 20 |
| 3.4. Volumetric Scan | 20 |
| 3.5. Power Drift | 20 |
| 4. System Verification Procedure..... | 21 |
| 4.1. Tissue Verification..... | 21 |
| 4.1.1. Tissue Dielectric Parameter Check Results | 21 |
| 4.2. System Verification Procedure | 22 |
| 4.2.1. System Verification Results | 23 |
| 5. SAR Measurement variability and uncertainty..... | 24 |
| 5.1. SAR measurement variability | 24 |
| 5.2. SAR measurement uncertainty..... | 24 |
| 6. RF Exposure Conditions | 25 |
| 6.1. Tablet host platform exposure conditions | 25 |
| 7. RF Output Power | 26 |
| 7.1. Maximum Tune-up Limit | 26 |
| 7.2. Wi-Fi Output Power | 26 |
| 7.3. BT Output Power..... | 28 |
| 8. Antenna Location..... | 29 |
| 9. SAR Measurement Results..... | 32 |
| 10. SAR Measurement Results..... | 33 |
| 10.1. SAR measurement results | 33 |
| 10.1.1. SAR measurement Result of Wi-Fi..... | 34 |

| | |
|---|----|
| 10.1.2. Simultaneous Transmission Analysis | 35 |
| 11. Appendix A. Photo documentation..... | 36 |
| 12. Appendix B. System Check Plots | 41 |
| 13. Appendix C. Plots of High SAR Measurement | 45 |
| 14. Appendix D. Calibration Certificate..... | 49 |

1. General Information

1.1. RF exposure limits

(A).Limits for Occupational/Controlled Exposure (W/kg)

| Whole-Body | Partial-Body | Hands, Wrists, Feet and Ankles |
|------------|--------------|--------------------------------|
| 0.4 | 8.0 | 20.0 |

(B).Limits for General Population/Uncontrolled Exposure (W/kg)

| Whole-Body | Partial-Body | Hands, Wrists, Feet and Ankles |
|------------|--------------|--------------------------------|
| 0.08 | 1.6 | 4.0 |

NOTE: **Whole-Body SAR** is averaged over the entire body, **partial-body SAR** is averaged over any 1 gram of tissue defined as a tissue volume in the shape of a cube. **SAR for hands, wrists, feet and ankles** is averaged over any 10 grams of tissue defined as a tissue volume in the shape of a cube.

Occupational/Controlled Environments:

Are defined as locations where there is exposure that may be incurred by people who are aware of the potential for exposure, (i.e. as a result of employment or occupation).

General Population/Uncontrolled Environments:

Are defined as locations where there is the exposure of individuals who have no knowledge or control of their exposure.

NOTE
 HEAD AND TRUNK LIMIT
 1.6 W/kg
 APPLIED TO THIS EUT

1.2. Statement of Compliance

The maximum results of Specific Absorption Rate (SAR) found during testing for Eclipse 1 are as follows.

| Band | Max. Reported SAR (W/kg) |
|------------|--|
| | 1-g Body (Separation distance of 0mm) |
| Wi-Fi 2.4G | 0.636 |
| Wi-Fi 5.2G | 0.761 |
| Wi-Fi 5.8G | 0.756 |

This device is in compliance with Specific Absorption Rate (SAR) for general population/uncontrolled exposure limits (1.6 W/kg) specified in FCC 47 CFR Part 2(2.1093) and ANSI/IEEE C95.1-1992, and had been tested in accordance with the measurement methods and procedures specified in IEEE Std 1528-2013 & KDB 865664 D01.

1.3. EUT Description

| Device Information | | | |
|---------------------------------|---|-----------|----------|
| Product Name | Tablet projector | | |
| Trademark | HEXA | | |
| Model Name | Eclipse 1 | | |
| Serial Model | n/a | | |
| FCC ID | 2ALLP-ECLIPSE1 | | |
| Device Phase | Identical Prototype | | |
| Exposure Category | General population / Uncontrolled environment | | |
| Antenna Type | FPCB Antenna | | |
| Battery Information | DC 11.4V, 4350mAh | | |
| Device Operating Configurations | | | |
| Supporting Mode(s) | Wi-Fi 2.4G/5G, BT | | |
| Test Modulation | Wi-Fi(DSSS/OFDM) | | |
| Operating Frequency Range(s) | Band | Tx (MHz) | Rx (MHz) |
| | Wi-Fi 2.4G | 2412-2462 | |
| | Wi-Fi 5.2G | 5180-5240 | |
| | Wi-Fi 5.8G | 5745-5825 | |
| | BT | 2402-2480 | |
| Test Channels (low-mid-high) | 1-6-11(Wi-Fi 2.4G) 36-40-48(Wi-Fi 5.2G) 149-157-165(Wi-Fi 5.8G) | | |

1.4. Test specification(s)

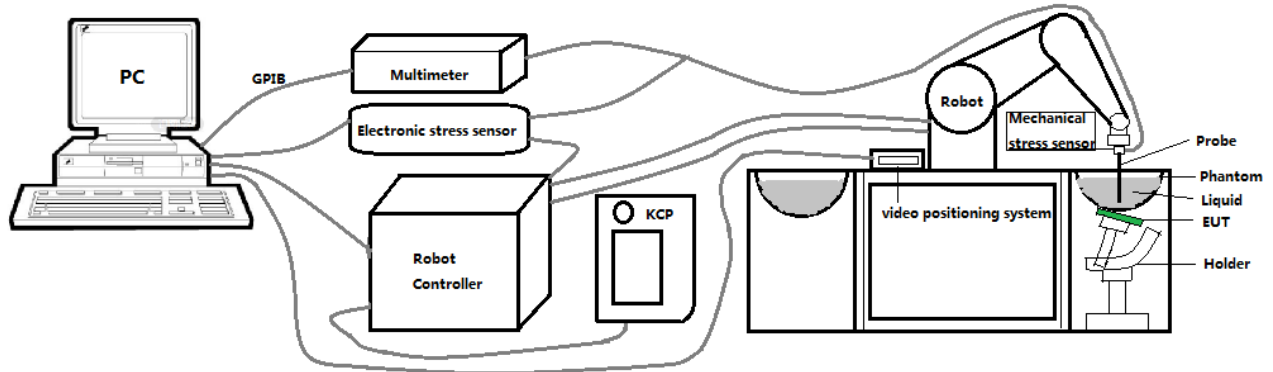
| |
|---|
| FCC 47 CFR Part 2(2.1093) |
| ANSI/IEEE C95.1-1992 |
| IEEE Std 1528-2013 |
| KDB 865664 D01 SAR measurement 100 MHz to 6 GHz |
| KDB 865664 D02 RF Exposure Reporting |
| KDB 447498 D01 General RF Exposure Guidance |
| KDB 248227 D01 802.11 Wi-Fi SAR |
| KDB 616217 D04 SAR for laptop and tablets |

1.5. Ambient Condition

| | |
|---------------------|-------------|
| Ambient temperature | 20°C – 24°C |
| Relative Humidity | 30% – 70% |

2. SAR Measurement System

2.1. SATIMO SAR Measurement Set-up Diagram



These measurements were performed with the automated near-field scanning system OPENSAR from SATIMO. The system is based on a high precision robot (working range: 901 mm), which positions the probes with a positional repeatability of better than ± 0.03 mm. The SAR measurements were conducted with dosimetric probe (manufactured by SATIMO), designed in the classical triangular configuration and optimized for dosimetric evaluation.

The first step of the field measurement is the evaluation of the voltages induced on the probe by the device under test. Probe diode detectors are nonlinear. Below the diode compression point, the output voltage is proportional to the square of the applied E-field; above the diode compression point, it is linear to the applied E-field. The compression point depends on the diode, and a calibration procedure is necessary for each sensor of the probe.

The Keithley multimeter reads the voltage of each sensor and send these three values to the PC. The corresponding E field value is calculated using the probe calibration factors, which are stored in the working directory. This evaluation includes linearization of the diode characteristics. The field calculation is done separately for each sensor. Each component of the E field is displayed on the "Dipole Area Scan Interface" and the total E field is displayed on the "3D Interface"

2.2. Robot

The SATIMO SAR system uses the high precision robots from KUKA. For the 6-axis controller system, the robot controller version (KUKA) from KUKA is used. The KUKA robot series have many features that are important for our application:



- High precision (repeatability ± 0.03 mm)
- High reliability (industrial design)
- Jerk-free straight movements
- Low ELF interference (the closed metallic construction shields against motor control fields)

2.3. E-Field Probe

This E-field detection probe is composed of three orthogonal dipoles linked to special Schottky diodes with low detection thresholds. The probe allows the measurement of electric fields in liquids such as the one defined in the IEEE and CENELEC standards.

For the measurements the Specific Dosimetric E-Field Probe SN 08/16 EPGO287 with following specifications is used



- Dynamic range: 0.01-100 W/kg
 - Tip Diameter : 2.5 mm
 - Distance between probe tip and sensor center: 1 mm
 - Distance between sensor center and the inner phantom surface: 4 mm (repeatability better than ± 1 mm).
 - Probe linearity: ± 0.08 dB
 - Axial isotropy: < 0.25 dB
 - Hemispherical Isotropy: < 0.50 dB
 - Calibration range: 450MHz to 6000MHz for head & body simulating liquid.
 - Lower detection limit: 8mW/kg
- Angle between probe axis (evaluation axis) and surface normal line: less than 30° .

2.3.1. E-Field Probe Calibration

Each probe needs to be calibrated according to a dosimetric assessment procedure with accuracy better than $\pm 10\%$. The spherical isotropy shall be evaluated and within ± 0.25 dB. The sensitivity parameters (Norm X, Norm Y, and Norm Z), the diode compression parameter (DCP) and the conversion factor (Conv F) of the probe are tested. The calibration data can be referred to appendix D of this report.

2.4. SAM phantoms

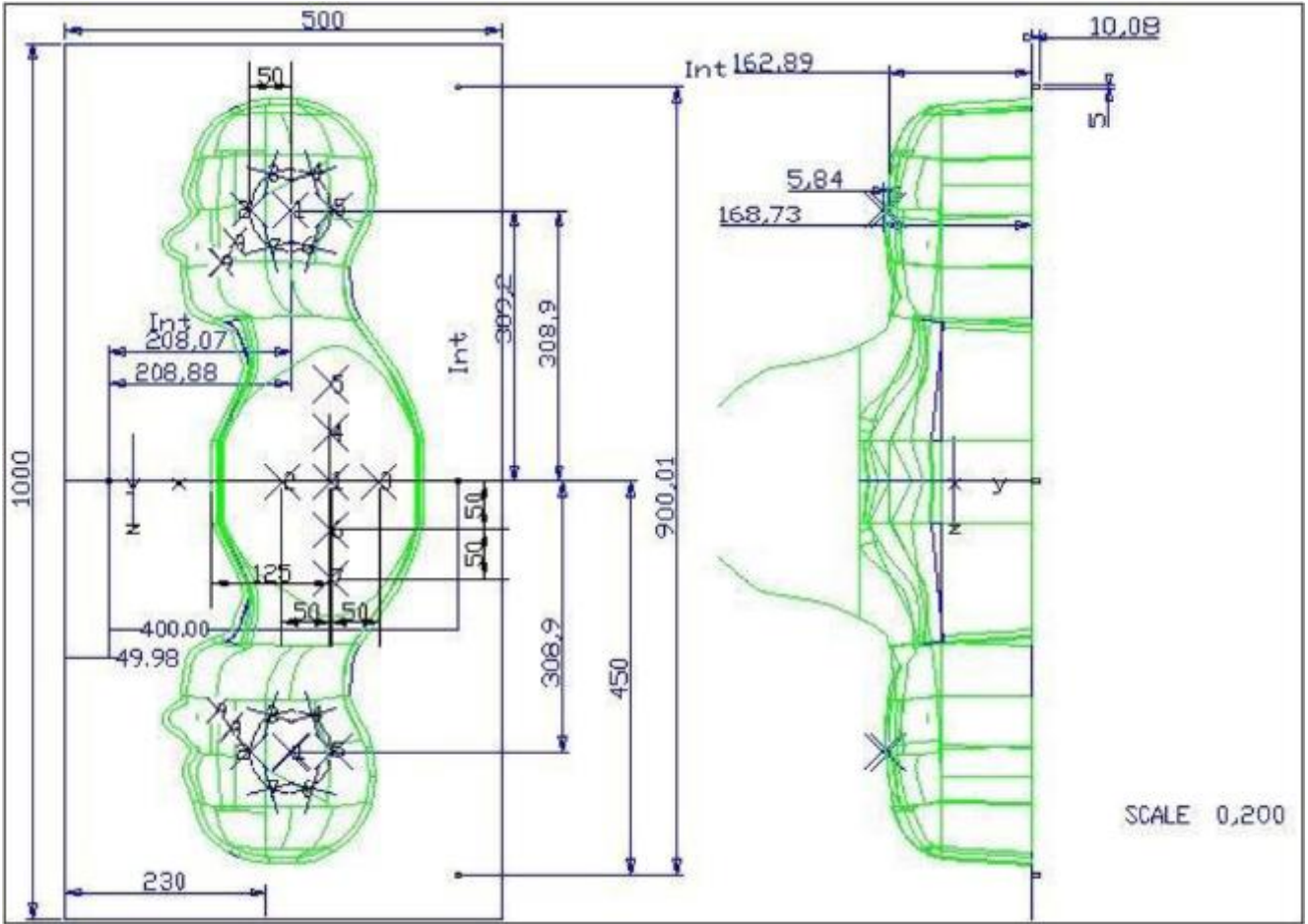
Photo of SAM phantom SN 16/15 SAM119



The SAM phantom is used to measure the SAR relative to people exposed to electro-magnetic field radiated by mobile phones.

2.4.1. Technical Data

| Serial Number | Shell thickness | Filling volume | Dimensions | Positionner Material | Permittivity | Loss Tangent |
|--------------------|-------------------|----------------|---|-------------------------|--------------|--------------|
| SN 16/15 SAM119 | 2 mm \pm 0.2 mm | 27 liters | Length:1000 mm Width:500 mm Height:200 mm | Gelcoat with fiberglass | 3.4 | 0.02 |

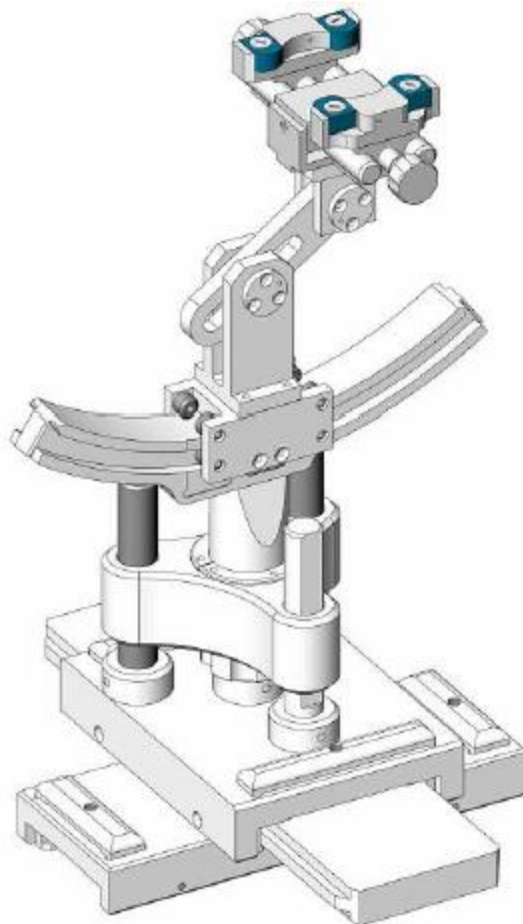


| Serial Number | Left Head | | Right Head | | Flat Part | |
|------------------------|-----------|------|------------|------|-----------|------|
| SN 16/15 SAM119 | 2 | 2.02 | 2 | 2.08 | 1 | 2.09 |
| | 3 | 2.05 | 3 | 2.06 | 2 | 2.06 |
| | 4 | 2.07 | 4 | 2.07 | 3 | 2.08 |
| | 5 | 2.08 | 5 | 2.08 | 4 | 2.10 |
| | 6 | 2.05 | 6 | 2.07 | 5 | 2.10 |
| | 7 | 2.05 | 7 | 2.05 | 6 | 2.07 |
| | 8 | 2.07 | 8 | 2.06 | 7 | 2.07 |
| | 9 | 2.08 | 9 | 2.06 | - | - |

The test, based on ultrasonic system, allows measuring the thickness with an accuracy of 10 µm.

2.5. Device Holder

The positioning system allows obtaining cheek and tilting position with a very good accuracy. In compliance with CENELEC, the tilt angle uncertainty is lower than 1 degree.



| Serial Number | Holder Material | Permittivity | Loss Tangent |
|-----------------|-----------------|--------------|--------------|
| SN 16/15 MSH100 | Delrin | 3.7 | 0.005 |

2.6. Test Equipment List

This table gives a complete overview of the SAR measurement equipment.

Devices used during the test described are marked

| | Manufacturer | Name of Equipment | Type/Model | Serial Number | Calibration | |
|-------------------------------------|--------------|--------------------------------------|------------|---------------------------|---------------|---------------|
| | | | | | Last Cal. | Due Date |
| <input checked="" type="checkbox"/> | MVG | E FIELD PROBE | SSE2 | SN 08/16 EPGO287 | Sep. 08, 2016 | Sep. 07, 2017 |
| <input type="checkbox"/> | MVG | 450 MHz Dipole | SID450 | SN 03/15 DIP 0G450-345 | Apr. 06, 2015 | Apr. 05, 2018 |
| <input type="checkbox"/> | MVG | 750 MHz Dipole | SID750 | SN 03/15 DIP 0G750-355 | Apr. 06, 2015 | Apr. 05, 2018 |
| <input type="checkbox"/> | MVG | 835 MHz Dipole | SID835 | SN 03/15 DIP 0G835-347 | Apr. 06, 2015 | Apr. 05, 2018 |
| <input type="checkbox"/> | MVG | 900 MHz Dipole | SID900 | SN 03/15 DIP 0G900-348 | Apr. 06, 2015 | Apr. 05, 2018 |
| <input type="checkbox"/> | MVG | 1800 MHz Dipole | SID1800 | SN 03/15 DIP 1G800-349 | Apr. 06, 2015 | Apr. 05, 2018 |
| <input type="checkbox"/> | MVG | 1900 MHz Dipole | SID1900 | SN 03/15 DIP 1G900-350 | Apr. 06, 2015 | Apr. 05, 2018 |
| <input type="checkbox"/> | MVG | 2000 MHz Dipole | SID2000 | SN 03/15 DIP 2G000-351 | Apr. 06, 2015 | Apr. 05, 2018 |
| <input checked="" type="checkbox"/> | MVG | 2450 MHz Dipole | SID2450 | SN 03/15 DIP 2G450-352 | Apr. 06, 2015 | Apr. 05, 2018 |
| <input type="checkbox"/> | MVG | 2600 MHz Dipole | SID2600 | SN 03/15 DIP 2G600-356 | Apr. 06, 2015 | Apr. 05, 2018 |
| <input checked="" type="checkbox"/> | MVG | 5000 MHz Dipole | SWG5500 | SN 13/14 WGA 33 | Apr. 06, 2015 | Apr. 05, 2018 |
| <input checked="" type="checkbox"/> | MVG | Liquid measurement Kit | SCLMP | SN 21/15 OCPG 72 | NCR | NCR |
| <input checked="" type="checkbox"/> | MVG | Power Amplifier | N.A | AMPLISAR_28/14_003 | NCR | NCR |
| <input checked="" type="checkbox"/> | KEITHLEY | Millivoltmeter | 2000 | 4072790 | NCR | NCR |
| <input type="checkbox"/> | R&S | Universal radio communication tester | CMU200 | 117858 | Aug. 09, 2016 | Aug. 08, 2017 |
| <input type="checkbox"/> | R&S | Wideband radio communication tester | CMW500 | 148500 | Jun. 26, 2016 | Jun. 25, 2017 |
| <input checked="" type="checkbox"/> | HP | Network Analyzer | 8753D | 3410J01136 | Aug. 09, 2016 | Aug. 08, 2017 |

| | | | | | | |
|-------------------------------------|----------|--------------------------------|---------|------------|------------------|------------------|
| <input checked="" type="checkbox"/> | Agilent | PSG Analog Signal Generator | E8257D | MY51110112 | Aug. 09, 2016 | Aug. 08, 2017 |
| <input checked="" type="checkbox"/> | Agilent | Power meter | E4419B | MY45102538 | Aug. 09, 2016 | Aug. 08, 2017 |
| <input checked="" type="checkbox"/> | Agilent | Power sensor | E9301A | MY41495644 | Aug. 09, 2016 | Aug. 08, 2017 |
| <input checked="" type="checkbox"/> | Agilent | Power sensor | E9301A | US39212148 | Aug. 09, 2016 | Aug. 08, 2017 |
| <input checked="" type="checkbox"/> | MCLI/USA | Directional Coupler | CB11-20 | 0D2L51502 | Aug. 09, 2016 | Aug. 08, 2017 |

3. SAR Measurement Procedures

The measurement procedures are as follows:

<Conducted power measurement>

- (a) For WWAN power measurement, use base station simulator to configure EUT WWAN transmission in conducted connection with RF cable, at maximum power in each supported wireless interface and frequency band.
- (b) Read the WWAN RF power level from the base station simulator.
- (c) For Wi-Fi/BT power measurement, use engineering software to configure EUT Wi-Fi/BT continuously transmission, at maximum RF power in each supported wireless interface and frequency band.
- (d) Connect EUT RF port through RF cable to the power meter, and measure Wi-Fi/BT output power.

<SAR measurement>

- (a) Use base station simulator to configure EUT WWAN transmission in radiated connection, and engineering software to configure EUT Wi-Fi/BT continuously transmission, at maximum RF power, in the highest power channel.
- (b) Place the EUT in the positions as Appendix A demonstrates.
- (c) Set scan area, grid size and other setting on the OPENSAR software.
- (d) Measure SAR results for the highest power channel on each testing position.
- (e) Find out the largest SAR result on these testing positions of each band.
- (f) Measure SAR results for other channels in worst SAR testing position if the reported SAR of highest power channel is larger than 0.8 W/kg.

According to the test standard, the recommended procedure for assessing the peak spatial-average SAR value consists of the following steps:

- (a) Power reference measurement
- (b) Area scan
- (c) Zoom scan
- (d) Power drift measurement

3.1. Power Reference

The Power Reference Measurement and Power Drift Measurements are for monitoring the power drift of the device under test in the batch process. The minimum distance of probe sensors to surface determines the closest measurement point to phantom surface. This distance cannot be smaller than the distance of sensor calibration points to probe tip as defined in the probe properties.

3.2. Area scan & Zoom scan

The area scan is a 2D scan to find the hot spot location on the DUT. The zoom scan is a 3D scan above the hot spot to calculate the 1g and 10g SAR value.

Measurement of the SAR distribution with a grid of 8 to 16 mm * 8 to 16 mm and a constant distance to

the inner surface of the phantom. Since the sensors cannot directly measure at the inner phantom surface, the values between the sensors and the inner phantom surface are extrapolated. With these values the area of the maximum SAR is calculated by an interpolation scheme. Around this point, a cube of 30 * 30 * 30 mm or 32 * 32 * 32 mm is assessed by measuring 5 or 8 * 5 or 8 * 4 or 5 mm. With these data, the peak spatial-average SAR value can be calculated.

From the scanned SAR distribution, identify the position of the maximum SAR value, in addition identify the positions of any local maxima with SAR values within 2 dB of the maximum value that will not be within the zoom scan of other peaks; additional peaks shall be measured only when the primary peak is within 2 dB of the SAR compliance limit (e.g., 1 W/kg for 1,6 W/kg 1 g limit, or 1,26 W/kg for 2 W/kg, 10 g limit).

Area scan & Zoom scan scan parameters extracted from FCC KDB 865664 D01 SAR measurement 100 MHz to 6 GHz.

| | | ≤ 3 GHz | > 3 GHz |
|--|--|---|--|
| Maximum distance from closest measurement point (geometric center of probe sensors) to phantom surface | | 5 ± 1 mm | ½·δ·ln(2) ± 0.5 mm |
| Maximum probe angle from probe axis to phantom surface normal at the measurement location | | 30° ± 1° | 20° ± 1° |
| Maximum area scan spatial resolution: Δx _{Area} , Δy _{Area} | | ≤ 2 GHz: ≤ 15 mm 2 – 3 GHz: ≤ 12 mm | 3 – 4 GHz: ≤ 12 mm 4 – 6 GHz: ≤ 10 mm |
| | | When the x or y dimension of the test device, in the measurement plane orientation, is smaller than the above, the measurement resolution must be ≤ the corresponding x or y dimension of the test device with at least one measurement point on the test device. | |
| Maximum zoom scan spatial resolution: Δx _{Zoom} , Δy _{Zoom} | | ≤ 2 GHz: ≤ 8 mm 2 – 3 GHz: ≤ 5 mm* | 3 – 4 GHz: ≤ 5 mm* 4 – 6 GHz: ≤ 4 mm* |
| Maximum zoom scan spatial resolution, normal to phantom surface | uniform grid: Δz _{Zoom} (n) | ≤ 5 mm | 3 – 4 GHz: ≤ 4 mm 4 – 5 GHz: ≤ 3 mm 5 – 6 GHz: ≤ 2 mm |
| | graded grid Δz _{Zoom} (1): between 1 st two points closest to phantom surface | ≤ 4 mm | 3 – 4 GHz: ≤ 3 mm 4 – 5 GHz: ≤ 2.5 mm 5 – 6 GHz: ≤ 2 mm |
| | | Δz _{Zoom} (n>1): between subsequent points | ≤ 1.5·Δz _{Zoom} (n-1) |
| Minimum zoom scan volume | x, y, z | ≥ 30 mm | 3 – 4 GHz: ≥ 28 mm 4 – 5 GHz: ≥ 25 mm 5 – 6 GHz: ≥ 22 mm |

Note: δ is the penetration depth of a plane-wave at normal incidence to the tissue medium; see draft standard IEEE P1528-2011 for details.

* When zoom scan is required and the *reported* SAR from the *area scan based 1-g SAR estimation* procedures of KDB 447498 is ≤ 1.4 W/kg, ≤ 8 mm, ≤ 7 mm and ≤ 5 mm zoom scan resolution may be applied, respectively, for 2 GHz to 3 GHz, 3 GHz to 4 GHz and 4 GHz to 6 GHz.

3.3. Description of interpolation/extrapolation scheme

The local SAR inside the phantom is measured using small dipole sensing elements inside a probe body. The probe tip must not be in contact with the phantom surface in order to minimise measurements errors, but the highest local SAR will occur at the surface of the phantom.

An extrapolation is used to determine these highest local SAR values. The extrapolation is based on a fourth-order least-square polynomial fit of measured data. The local SAR value is then extrapolated from the liquid surface with a 1 mm step.

The measurements have to be performed over a limited time (due to the duration of the battery) so the step of measurement is high. It could vary between 5 and 8 mm. To obtain an accurate assessment of the maximum SAR averaged over 10 grams and 1 gram requires a very fine resolution in the three dimensional scanned data array.

3.4. Volumetric Scan

The volumetric scan consists to a full 3D scan over a specific area. This 3D scan is useful for multi Tx SAR measurement. Indeed, it is possible with OpenSAR to add, point by point, several volumetric scans to calculate the SAR value of the combined measurement as it is defined in the standard IEEE1528 and IEC62209.

3.5. Power Drift

All SAR testing is under the EUT installed full charged battery and transmit maximum output power. In OpenSAR measurement software, the power reference measurement and power drift measurement procedures are used for monitoring the power drift of EUT during SAR test. Both these procedures measure the field at a specified reference position before and after the SAR testing. The software will calculate the field difference in V/m. If the power drifts more than $\pm 5\%$, the SAR will be retested.

4. System Verification Procedure

4.1. Tissue Verification

The following tissue formulations are provided for reference only as some of the parameters have not been thoroughly verified. The composition of ingredients may be modified accordingly to achieve the desired target tissue parameters required for routine SAR evaluation.

| Ingredients (% of weight) | Head Tissue | | | | | | | | | |
|---------------------------|-------------|-------|-------|-------|-------|-------|-------|-------|-------|-------|
| | 750 | 835 | 900 | 1800 | 1900 | 2000 | 2450 | 2600 | 5200 | 5800 |
| Frequency Band (MHz) | 750 | 835 | 900 | 1800 | 1900 | 2000 | 2450 | 2600 | 5200 | 5800 |
| Water | 34.40 | 34.40 | 34.40 | 55.36 | 55.36 | 57.87 | 57.87 | 57.87 | 65.53 | 65.53 |
| NaCl | 0.79 | 0.79 | 0.79 | 0.35 | 0.35 | 0.16 | 0.16 | 0.16 | 0.00 | 0.00 |
| 1,2-Propanediol | 64.81 | 64.81 | 64.81 | 0.00 | 0.00 | 0.00 | 0.00 | 0.00 | 0.00 | 0.00 |
| Triton X-100 | 0.00 | 0.00 | 0.00 | 30.45 | 30.45 | 19.97 | 19.97 | 19.97 | 24.24 | 24.24 |
| DGBE | 0.00 | 0.00 | 0.00 | 13.84 | 13.84 | 22.00 | 22.00 | 22.00 | 10.23 | 10.23 |
| Ingredients (% of weight) | Body Tissue | | | | | | | | | |
| | 750 | 835 | 900 | 1800 | 1900 | 2000 | 2450 | 2600 | 5200 | 5800 |
| Frequency Band (MHz) | 750 | 835 | 900 | 1800 | 1900 | 2000 | 2450 | 2600 | 5200 | 5800 |
| Water | 50.30 | 50.30 | 50.30 | 69.91 | 69.91 | 71.88 | 71.88 | 71.88 | 79.54 | 79.54 |
| NaCl | 0.60 | 0.60 | 0.60 | 0.13 | 0.13 | 0.16 | 0.16 | 0.16 | 0.00 | 0.00 |
| 1,2-Propanediol | 49.10 | 49.10 | 49.10 | 0.00 | 0.00 | 0.00 | 0.00 | 0.00 | 0.00 | 0.00 |
| Triton X-100 | 0.00 | 0.00 | 0.00 | 9.99 | 9.99 | 19.97 | 19.97 | 19.97 | 11.24 | 11.24 |
| DGBE | 0.00 | 0.00 | 0.00 | 19.97 | 19.97 | 7.99 | 7.99 | 7.99 | 9.22 | 9.22 |

4.1.1. Tissue Dielectric Parameter Check Results

The simulating liquids should be checked at the beginning of a series of SAR measurements to determine if the dielectric parameters are within the tolerances of the specified target values. The measured conductivity and relative permittivity should be within $\pm 5\%$ of the target values.

| Tissue Type | Measured Frequency (MHz) | Target Tissue | | Measured Tissue | | Liquid Temp. | Test Date |
|-------------|--------------------------|----------------------------|------------------------------|-----------------|----------------|--------------|---------------|
| | | ϵ_r ($\pm 5\%$) | σ (S/m) ($\pm 5\%$) | ϵ_r | σ (S/m) | | |
| Body 2450 | 2450 | 52.70 (50.07~55.33) | 1.95 (1.85~2.04) | 51.99 | 1.98 | 21.5 °C | Mar. 15, 2017 |
| Body 5000 | 5200 | 49.00 (44.10~53.90) | 5.30 (4.77~5.83) | 49.80 | 5.27 | 21.6 °C | Mar. 17, 2017 |
| Body 5000 | 5800 | 48.20 (43.38~53.02) | 6.00 (5.40~6.60) | 48.83 | 6.00 | 21.6 °C | Mar. 17, 2017 |

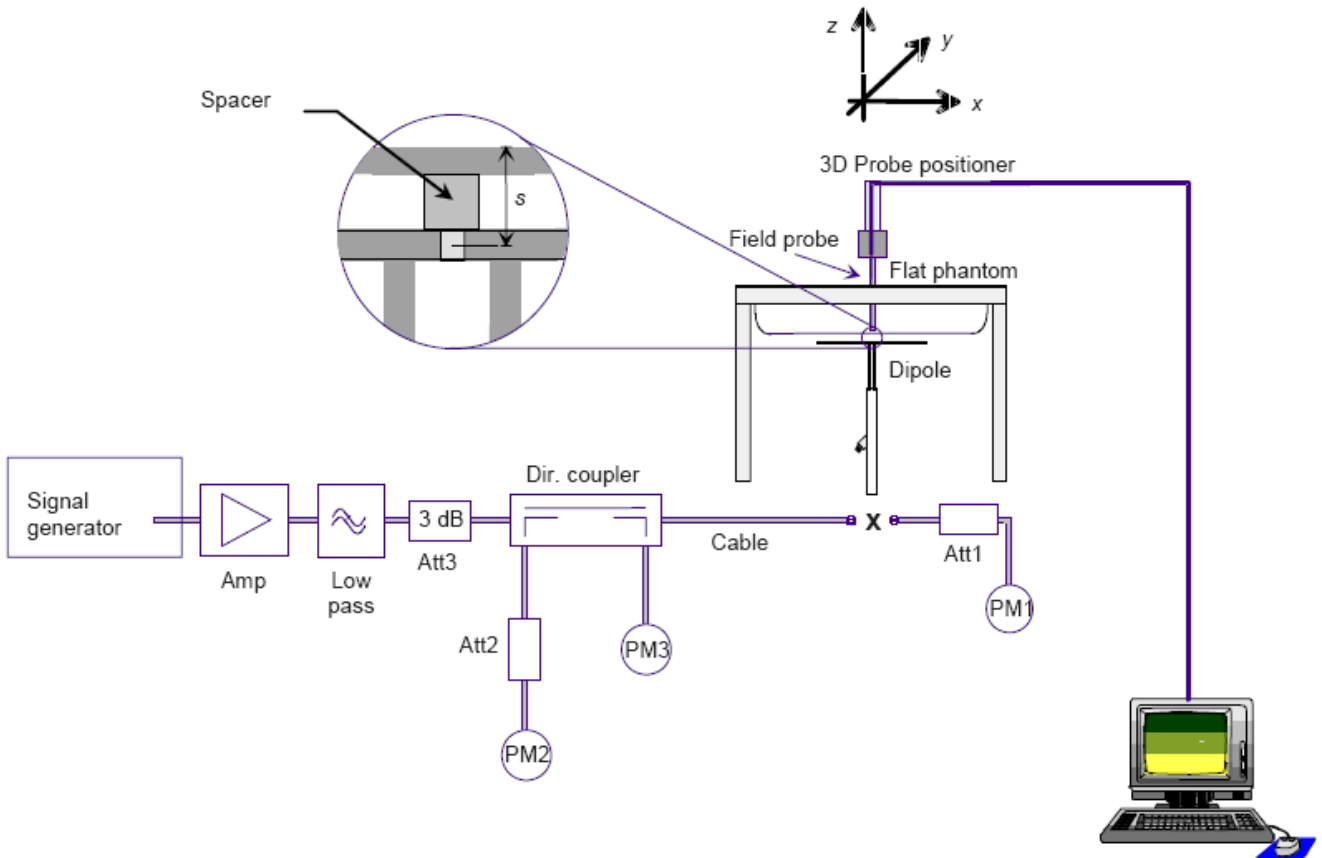
NOTE: The dielectric parameters of the tissue-equivalent liquid should be measured under similar ambient conditions and within 2 °C of the conditions expected during the SAR evaluation to satisfy

protocol requirements.

4.2. System Verification Procedure

The system verification is performed for verifying the accuracy of the complete measurement system and performance of the software. The dipole is connected to the signal source consisting of signal generator and amplifier via a directional coupler, N-connector cable and adaption to SMA. It is fed with a power of 100mW (below 5GHz) or 100mW (above 5GHz). To adjust this power a power meter is used. The power sensor is connected to the cable before the system verification to measure the power at this point and do adjustments at the signal generator. At the outputs of the directional coupler both return loss as well as forward power are controlled during the system verification to make sure that emitted power at the dipole is kept constant. This can also be checked by the power drift measurement after the test (result on plot).

The system verification is shown as below picture:



4.2.1. System Verification Results

Comparing to the original SAR value provided by SATIMO, the verification data should be within its specification of $\pm 10\%$. Below table shows the target SAR and measured SAR after normalized to 1W input power. The table below indicates the system performance verification can meet the variation criterion and the plots can be referred to Appendix B of this report.

| System Verification | Target SAR (1W) ($\pm 10\%$) | | Measured SAR (Normalized to 1W) | | Liquid Temp. | Test Date |
|---------------------|-----------------------------------|------------------------|------------------------------------|-------------|--------------|---------------|
| | 1-g (W/Kg) | 10-g (W/Kg) | 1-g (W/Kg) | 10-g (W/Kg) | | |
| 2450MHz Body | 49.32 (44.39~54.25) | 22.89 (20.60~25.17) | 49.41 | 23.57 | 21.5 °C | Mar. 15, 2017 |
| 5200MHz Body | 150.06 (135.05~165.07) | 53.20 (47.88~58.52) | 155.97 | 54.09 | 21.6 °C | Mar. 17, 2017 |
| 5800MHz Body | 173.64 (156.28~191.00) | 59.29 (53.36~65.22) | 162.57 | 56.88 | 21.6 °C | Mar. 17, 2017 |

5. SAR Measurement variability and uncertainty

5.1. SAR measurement variability

Per KDB865664 D01 SAR measurement 100 MHz to 6 GHz, SAR measurement variability must be assessed for each frequency band, which is determined by the SAR probe calibration point and tissue-equivalent medium used for the device measurements. The additional measurements are repeated after the completion of all measurements requiring the same head or body tissue-equivalent medium in a frequency band. The test device should be returned to ambient conditions (normal room temperature) with the battery fully charged before it is re-mounted on the device holder for the repeated measurement(s) to minimize any unexpected variations in the repeated results.

- 1) Repeated measurement is not required when the original highest measured SAR is < 0.80 W/kg; steps 2) through 4) do not apply.
- 2) When the original highest measured SAR is ≥ 0.80 W/kg, repeat that measurement once.
- 3) Perform a second repeated measurement only if the ratio of largest to smallest SAR for the original and first repeated measurements is > 1.20 or when the original or repeated measurement is ≥ 1.45 W/kg (~ 10% from the 1-g SAR limit).
- 4) Perform a third repeated measurement only if the original, first or second repeated measurement is ≥ 1.5 W/kg and the ratio of largest to smallest SAR for the original, first and second repeated measurements is > 1.20 .

5.2. SAR measurement uncertainty

Per KDB865664 D01 SAR Measurement 100 MHz to 6 GHz, when the highest measured 1-g SAR within a frequency band is < 1.5 W/kg, the extensive SAR measurement uncertainty analysis described in IEEE Std 1528-2013 is not required in SAR reports submitted for equipment approval. The equivalent ratio (1.5/1.6) is applied to extremity and occupational exposure conditions.

6. RF Exposure Conditions

6.1. Tablet host platform exposure conditions

Per KDB616217 D04, When the modular approach is used, transmitters and modules must be initially tested for standalone operations in generic host conditions according to the following minimum test separation distance and antenna installation requirements for incorporation in the tablet platform. The separation distance required for incorporation in qualified hosts is described in KDB 447498; item 5) of section 4.1 and item 1) of section 5.2.2 etc.

- ≤ 5 mm between the antenna and user for both back surface and edge exposure conditions
- the antennas used by the host must have been tested for equipment approval or qualify for SAR test exclusion
- the antenna polarization, physical orientation, rotation and installation configurations used by the host must have been tested for compliance or qualify for test exclusion
- when the *SAR Test Exclusion Threshold* in KDB 447498 applies, a *test separation distance* of 5 mm is required to determine test exclusion for the tablet platform

The antennas embedded in tablets are typically ≤ 5 mm from the outer housing. The required antenna to user test separation distance is a “not to exceed test” distance required to apply the modular approach. Instead of the typical zero gap tablet edge test requirement between the edge of a tablet and the user, when an antenna has been tested at ≤ 5 mm according to the modular approach it can be incorporated into tablets with at least twice the tested distance from the outer housing of the tablet edge; otherwise, the tablet edge zero gap test requirement applies. When the dedicated host approach is applied, the back surface and edges of the tablet should be tested for SAR compliance with the tablet touching the phantom.

7. RF Output Power

7.1. Maximum Tune-up Limit

| Band | Mode | The Tune-up Maximum Power (Customer Declared)(dBm) | Range | Measured Output Maximum Power(dBm) | |
|---------------|----------------|--|----------|------------------------------------|-------|
| Wi-Fi 2.4G | 802.11b | 13±1 | 12~14 | 13.91 | |
| | 802.11g | 9.5±1 | 8.5~10.5 | 9.98 | |
| | 802.11n-HT20 | 9.5±1 | 8.5~10.5 | 9.98 | |
| | 802.11n-HT40 | 9.5±1 | 8.5~10.5 | 9.78 | |
| Wi-Fi 5.2G | 802.11a | 14±1 | 13~15 | 14.90 | |
| | 802.11n (20M) | 14±1 | 13~15 | 15.00 | |
| | 802.11n (40M) | 13±1 | 12~14 | 13.80 | |
| | 802.11ac (20M) | 13±1 | 12~14 | 13.80 | |
| | 802.11ac (40M) | 13±1 | 12~14 | 13.60 | |
| | 802.11ac (80M) | 13±1 | 12~14 | 13.20 | |
| Wi-Fi 5.8G | 802.11a | 14±1 | 13~15 | 14.50 | |
| | 802.11n (20M) | 14±1 | 13~15 | 14.60 | |
| | 802.11n (40M) | 14±1 | 13~15 | 14.30 | |
| | 802.11ac (20M) | 14±1 | 13~15 | 14.40 | |
| | 802.11ac (40M) | 14±1 | 13~15 | 14.20 | |
| | 802.11ac (80M) | 14±1 | 13~15 | 13.90 | |
| BT | 3.0 | 1M | 2±1 | 1~3 | 2.49 |
| | | 2M | -1±1 | -2~0 | -0.60 |
| | | 3M | -2±1 | -3~-1 | -1.65 |
| | 4.0 | 1±1 | 0~2 | 1.22 | |

7.2. Wi-Fi Output Power

Per KDB248227 D01 v02r02, The default power measurement procedures are:

- a) Power must be measured at each transmit antenna port according to the DSSS and OFDM transmission configurations in each standalone and aggregated frequency band.
- b) Power measurement is required for the transmission mode configuration with the highest maximum output power specified for production units.¹¹
 - 1) When the same highest maximum output power specification applies to multiple transmission modes, the largest channel bandwidth configuration with the lowest order modulation and lowest data rate is measured.
 - 2) When the same highest maximum output power is specified for multiple largest channel bandwidth configurations with the same lowest order modulation or lowest order modulation and lowest data rate, power measurement is required for all equivalent 802.11 configurations with the same maximum output power.¹²
- c) For each transmission mode configuration, power must be measured for the highest and lowest channels; and at the mid-band channel(s) when there are at least 3 channels. For configurations with multiple mid-band channels, due to an even number of channels, both channels should be measured.

| Mode | Channel | Frequency (MHz) | Tune-up | Output Power (dBm) |
|-------------------|---------|-----------------|---------|--------------------|
| 802.11b | 1 | 2412 | 14.00 | 12.75 |
| | 6 | 2437 | 14.00 | 13.91 |
| | 11 | 2462 | 14.00 | 13.69 |
| 802.11g | 1 | 2412 | 10.50 | 9.58 |
| | 6 | 2437 | 10.50 | 9.38 |
| | 11 | 2462 | 10.50 | 9.98 |
| 802.11n (HT20) | 1 | 2412 | 10.50 | 9.47 |
| | 6 | 2437 | 10.50 | 9.69 |
| | 11 | 2462 | 10.50 | 9.98 |
| 802.11n (HT40) | 3 | 2422 | 10.50 | 9.38 |
| | 6 | 2437 | 10.50 | 9.57 |
| | 9 | 2452 | 10.50 | 9.78 |
| 802.11a | 36 | 5180 | 15.00 | 13.80 |
| | 40 | 5200 | 15.00 | 14.10 |
| | 48 | 5240 | 15.00 | 14.90 |
| 802.11n (20M) | 36 | 5180 | 15.00 | 15.00 |
| | 40 | 5200 | 15.00 | 13.90 |
| | 48 | 5240 | 15.00 | 13.50 |
| 802.11n (40M) | 38 | 5190 | 14.00 | 13.80 |
| | 46 | 5230 | 14.00 | 13.50 |
| 802.11ac (20M) | 36 | 5180 | 14.00 | 13.80 |
| | 40 | 5200 | 14.00 | 13.70 |
| | 48 | 5240 | 14.00 | 13.60 |
| 802.11ac (40M) | 38 | 5190 | 14.00 | 13.60 |
| | 46 | 5230 | 14.00 | 13.60 |
| 802.11ac (80M) | 42 | 5210 | 14.00 | 13.20 |
| 802.11a | 149 | 5745 | 15.00 | 14.50 |
| | 157 | 5785 | 15.00 | 13.90 |
| | 165 | 5825 | 15.00 | 13.60 |
| 802.11n (20M) | 149 | 5745 | 15.00 | 14.60 |
| | 157 | 5785 | 15.00 | 14.00 |
| | 165 | 5825 | 15.00 | 13.40 |
| 802.11n (40M) | 151 | 5755 | 15.00 | 14.30 |
| | 159 | 5795 | 15.00 | 13.70 |
| 802.11ac (20M) | 149 | 5745 | 15.00 | 14.40 |
| | 157 | 5785 | 15.00 | 14.20 |
| | 165 | 5825 | 15.00 | 13.20 |

| | | | | |
|-------------------|-----|------|-------|-------|
| 802.11ac (40M) | 151 | 5755 | 15.00 | 14.20 |
| | 159 | 5795 | 15.00 | 13.90 |
| 802.11ac (80M) | 155 | 5775 | 15.00 | 13.90 |

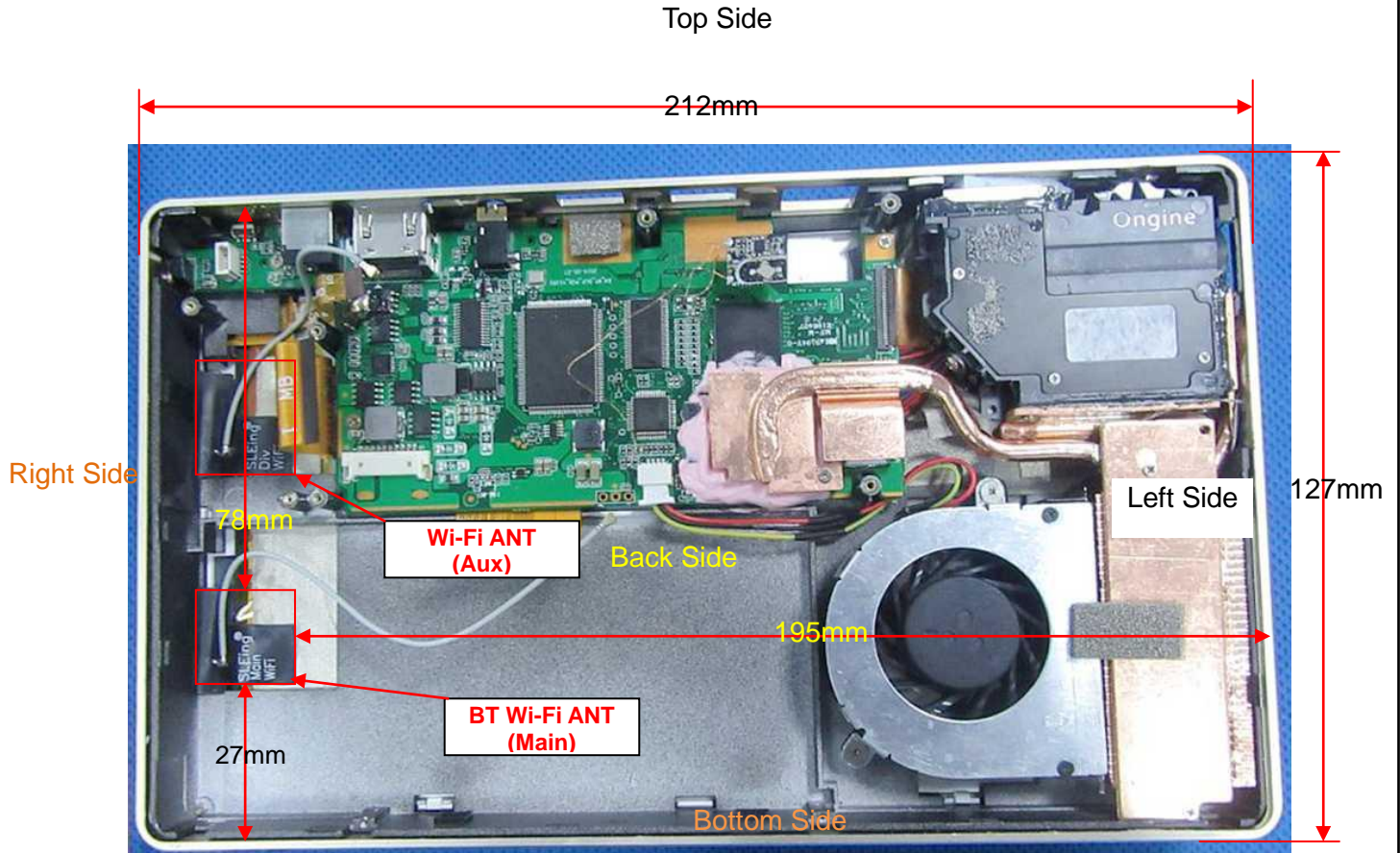
7.3. BT Output Power

The output power of BT is as following:

| BT | Output Power (dBm) | | | |
|----|--------------------|-------|-------|-------|
| | Tune-up | 0CH | 39CH | 78CH |
| 1M | 3.00 | 1.63 | 2.49 | 2.01 |
| 2M | 0.00 | -1.63 | -0.60 | -0.97 |
| 3M | -1.00 | -2.74 | -1.65 | -2.00 |

| BT(4.0) | Channel | Tune-up | Output Power (dBm) |
|---------|---------|---------|--------------------|
| | 0CH | 2.00 | 0.25 |
| | 19CH | 2.00 | 1.22 |
| | 39CH | 2.00 | 0.84 |

8. Antenna Location



NOTE: The Wi-Fi Ant (Aux) is only received not transmission, so SAR test is not required.

| Distance of the Antenna to the EUT surface/edge | | | | | | |
|---|------------|-----------|-----------|------------|----------|-------------|
| Antennas | Front Side | Back Side | Left Side | Right Side | Top Side | Bottom Side |
| WLAN & BT | 5mm | 19mm | 195mm | 4mm | 78mm | 27mm |

| Positions for SAR tests | | |
|--|-------------------------------------|------------|
| Test separation distances \leq 50 mm | | |
| Exposure Positions | Tune-up Maximum power of Wi-Fi 2.4G | |
| | 14dBm | |
| Front Side | Antenna to user(mm) | 5 |
| | SAR exclusion threshold | 7.9 |
| | SAR testing required? | YES |
| Back Side | Antenna to user(mm) | 19 |
| | SAR exclusion threshold | 2.1 |
| | SAR testing required? | NO |
| Right Side | Antenna to user(mm) | 4 |
| | SAR exclusion threshold | 7.9 |
| | SAR testing required? | YES |
| Bottom Side | Antenna to user(mm) | 27 |
| | SAR exclusion threshold | 1.5 |
| | SAR testing required? | NO |
| Exposure Positions | Tune-up Maximum power of Wi-Fi 5.2G | |
| | 15dBm | |
| Front Side | Antenna to user(mm) | 5 |
| | SAR exclusion threshold | 14.5 |
| | SAR testing required? | YES |
| Back Side | Antenna to user(mm) | 19 |
| | SAR exclusion threshold | 3.8 |
| | SAR testing required? | YES |
| Right Side | Antenna to user(mm) | 4 |
| | SAR exclusion threshold | 14.5 |
| | SAR testing required? | YES |
| Bottom Side | Antenna to user(mm) | 27 |
| | SAR exclusion threshold | 2.7 |
| | SAR testing required? | NO |
| Exposure Positions | Tune-up Maximum power of Wi-Fi 5.8G | |
| | 15dBm | |
| Front Side | Antenna to user(mm) | 5 |
| | SAR exclusion threshold | 15.3 |
| | SAR testing required? | YES |
| Back Side | Antenna to user(mm) | 19 |
| | SAR exclusion threshold | 4 |
| | SAR testing required? | YES |

| | | |
|-------------|-------------------------|------------|
| Right Side | Antenna to user(mm) | 4 |
| | SAR exclusion threshold | 15.3 |
| | SAR testing required? | YES |
| Bottom Side | Antenna to user(mm) | 27 |
| | SAR exclusion threshold | 2.8 |
| | SAR testing required? | NO |

NOTE: Refer to section 4.3.1 of KDB 447498 D01.

| Positions for SAR tests | | |
|-----------------------------------|-------------------------------------|-----------|
| Test separation distances > 50 mm | | |
| Exposure Positions | Tune-up Maximum power of Wi-Fi 2.4G | |
| | 14dBm | 25mW |
| Left Side | Antenna to user(mm) | 195 |
| | SAR exclusion threshold(mW) | 1546 |
| | SAR testing required? | NO |
| Top Side | Antenna to user(mm) | 78 |
| | SAR exclusion threshold(mW) | 376 |
| | SAR testing required? | NO |
| Exposure Positions | Tune-up Maximum power of Wi-Fi 5.2G | |
| | 15dBm | 32mW |
| Left Side | Antenna to user(mm) | 195 |
| | SAR exclusion threshold(mW) | 1516 |
| | SAR testing required? | NO |
| Top Side | Antenna to user(mm) | 78 |
| | SAR exclusion threshold(mW) | 346 |
| | SAR testing required? | NO |
| Exposure Positions | Tune-up Maximum power of Wi-Fi 5.8G | |
| | 15dBm | 32mW |
| Left Side | Antenna to user(mm) | 195 |
| | SAR exclusion threshold(mW) | 1512 |
| | SAR testing required? | NO |
| Top Side | Antenna to user(mm) | 78 |
| | SAR exclusion threshold(mW) | 342 |
| | SAR testing required? | NO |

NOTE: Refer to section 4.3.1 of KDB 447498 D01.

9. SAR Measurement Results

Refer to KDB 447498 D01, the 1-g SAR and 10-g SAR test exclusion thresholds for 100 MHz to 6 GHz at test separation distances ≤ 50 mm are determined by:

$[(\text{max. power of channel, including tune-up tolerance, mW})/(\text{min. test separation distance, mm})] \cdot [\sqrt{f_{(\text{GHz})}}] \leq 3.0$ for 1-g SAR and ≤ 7.5 for 10-g extremity SAR, where:

- $f_{(\text{GHz})}$ is the RF channel transmit frequency in GHz
- Power and distance are rounded to the nearest mW and mm before calculation
- The result is rounded to one decimal place for comparison

When the minimum test separation distance is < 5 mm, a distance of 5 mm is applied to determine SAR test exclusion.

| Mode | P_{max} (dBm) | P_{max} (mW) | Distance (mm) | f (GHz) | Calculation Result | SAR Exclusion threshold | SAR test exclusion |
|------|------------------------|-----------------------|---------------|---------|--------------------|-------------------------|--------------------|
| BT | 3 | 2 | 5 | 2.48 | 0.6 | 3.0 | Yes |

NOTE: Standalone SAR test exclusion for BT

When standalone SAR test exclusion applies to an antenna that transmits simultaneously with other antennas, the standalone SAR must be estimated according to following to determine simultaneous transmission SAR test exclusion:

$[(\text{max. power of channel, including tune-up tolerance, mW})/(\text{min. test separation distance, mm})] \cdot [\sqrt{f_{(\text{GHz})}/x}] \text{ W/kg}$ for test separation distances $\leq 50\text{mm}$, where $x = 7.5$ for 1-g SAR and $x = 18.75$ for 10-g SAR.

When the minimum test separation distance is < 5 mm, a distance of 5 mm is applied to determine SAR test exclusion.

| Mode | Position | P_{max} (dBm) | P_{max} (mW) | Distance (mm) | f (GHz) | x | Estimated SAR (W/Kg) |
|------|----------|------------------------|-----------------------|---------------|---------|-----|----------------------|
| BT | Body | 3 | 2 | 5 | 2.48 | 7.5 | 0.084 |

NOTE: Estimated SAR calculation for BT

10. SAR Measurement Results

10.1. SAR measurement results

General Notes:

- 1) Per KDB447498 D01, all measurement SAR results are scaled to the maximum tune-up tolerance limit to demonstrate compliant.
- 2) Per KDB447498 D01, testing of other required channels within the operating mode of a frequency band is not required when the reported 1-g or 10-g SAR for the mid-band or highest output power channel is: ≤ 0.8 W/kg or 2.0 W/kg, for 1-g or 10-g respectively, when the transmission band is ≤ 100 MHz. When the maximum output power variation across the required test channels is $> \frac{1}{2}$ dB, instead of the middle channel, the highest output power channel must be used.
- 3) Per KDB865664 D01, for each frequency band, repeated SAR measurement is required only when the measured SAR is ≥ 0.8 W/kg; if the deviation among the repeated measurement is $\leq 20\%$, and the measured SAR < 1.45 W/kg, only one repeated measurement is required.
- 4) Per KDB865664 D02, SAR plot is only required for the highest measured SAR in each exposure configuration, wireless mode and frequency band combination; Plots are also required when the measured SAR is > 1.5 W/kg, or > 7.0 W/kg for occupational exposure. The published RF exposure KDB procedures may require additional plots; for example, to support SAR to peak location separation ratio test exclusion and/or volume scan post-processing(Refer to appendix C for details).

10.1.1. SAR measurement Result of Wi-Fi

| Test Position of Body with 0mm | Test channel /Freq. | Test Mode | SAR Value (W/kg) | | Power Drift (±5%) | Conducted power (dBm) | Tune-up power (dBm) | Scaled SAR 1g (W/Kg) |
|--------------------------------|---------------------|-----------|------------------|-------|-------------------|-----------------------|---------------------|----------------------|
| | | | 1g | 10g | | | | |
| Front Side | 6/2437 | 802.11b | 0.371 | 0.159 | -0.52 | 13.91 | 14.00 | 0.379 |
| Right Side | 6/2437 | 802.11b | 0.056 | 0.031 | -1.59 | 13.91 | 14.00 | 0.057 |

NOTE: Body SAR test results of Wi-Fi 2.4G

| Test Position of Body with 0mm | Test channel /Freq. | Test Mode | SAR Value (W/kg) | | Power Drift (±5%) | Conducted power (dBm) | Tune-up power (dBm) | Scaled SAR 1g (W/Kg) |
|--------------------------------|---------------------|-----------|------------------|-------|-------------------|-----------------------|---------------------|----------------------|
| | | | 1g | 10g | | | | |
| Front Side | 48/5240 | 802.11a | 0.744 | 0.299 | -4.66 | 14.90 | 15.00 | 0.761 |
| Back Side | 48/5240 | 802.11a | 0.674 | 0.223 | -2.25 | 14.90 | 15.00 | 0.690 |
| Right Side | 48/5240 | 802.11a | 0.085 | 0.043 | -2.10 | 14.90 | 15.00 | 0.087 |

NOTE: Body SAR test results of Wi-Fi 5.2G

| Test Position of Body with 0mm | Test channel /Freq. | Test Mode | SAR Value (W/kg) | | Power Drift (±5%) | Conducted power (dBm) | Tune-up power (dBm) | Scaled SAR 1g (W/Kg) |
|--------------------------------|---------------------|-----------|------------------|-------|-------------------|-----------------------|---------------------|----------------------|
| | | | 1g | 10g | | | | |
| Front Side | 149/5745 | 802.11a | 0.517 | 0.151 | -3.28 | 14.50 | 15.00 | 0.580 |
| Back Side | 149/5745 | 802.11a | 0.674 | 0.256 | -3.79 | 14.50 | 15.00 | 0.756 |
| Right Side | 149/5745 | 802.11a | 0.073 | 0.028 | -1.55 | 14.50 | 15.00 | 0.082 |

NOTE: Body SAR test results of Wi-Fi 5.8G

10.1.2. Simultaneous Transmission Analysis

Wi-Fi 2.4/5GHz and BT share the same antenna, and cannot transmit simultaneously.

11. Appendix A. Photo documentation

| Table of contents |
|--------------------------|
| Test Facility |
| Product Photo |
| Test Positions |
| Liquid depth |

Test Facility

Measurement System SATIMO



Product Photo

Front View

Back View



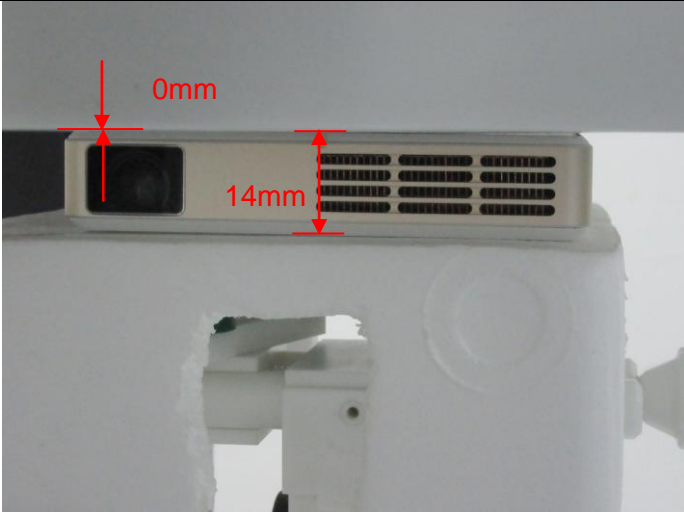
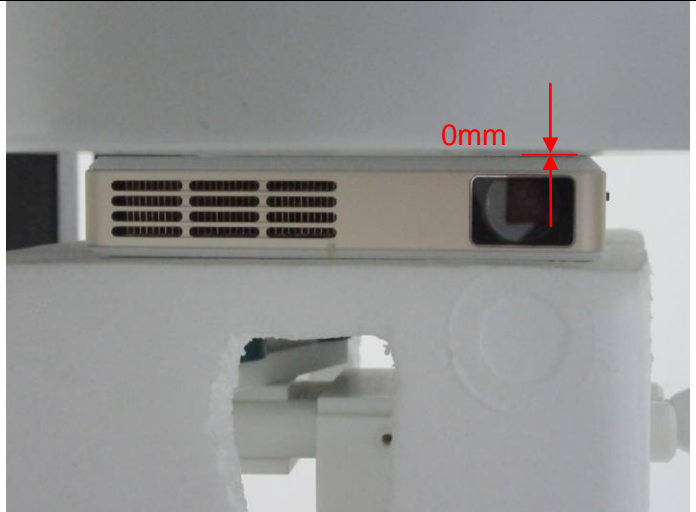
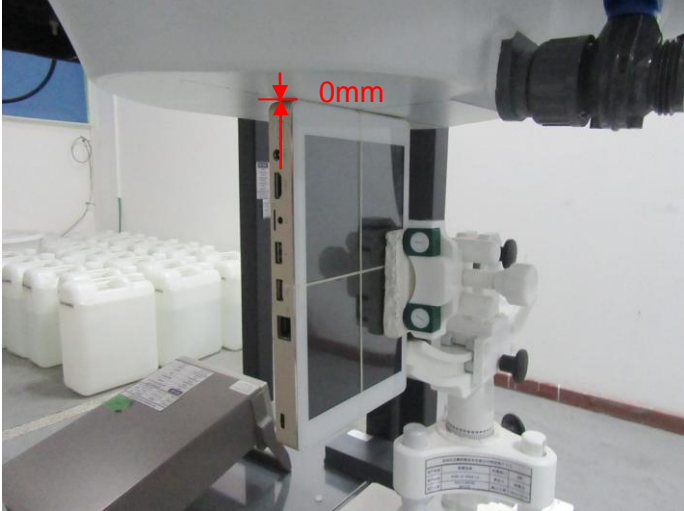
Reference Line

n/a



n/a

Test Positions

| Front Side (Separation distance of 0mm) | Back Side (Separation distance of 0mm) |
|--|---|
|  <p>0mm</p> <p>14mm</p> |  <p>0mm</p> |
| Right Side (Separation distance of 0mm) | n/a |
|  <p>0mm</p> | n/a |

Liquid depth

Body Position with 2450MHz liquid depth (15.3cm)



Body Position with 5000MHz liquid depth (15.4cm)

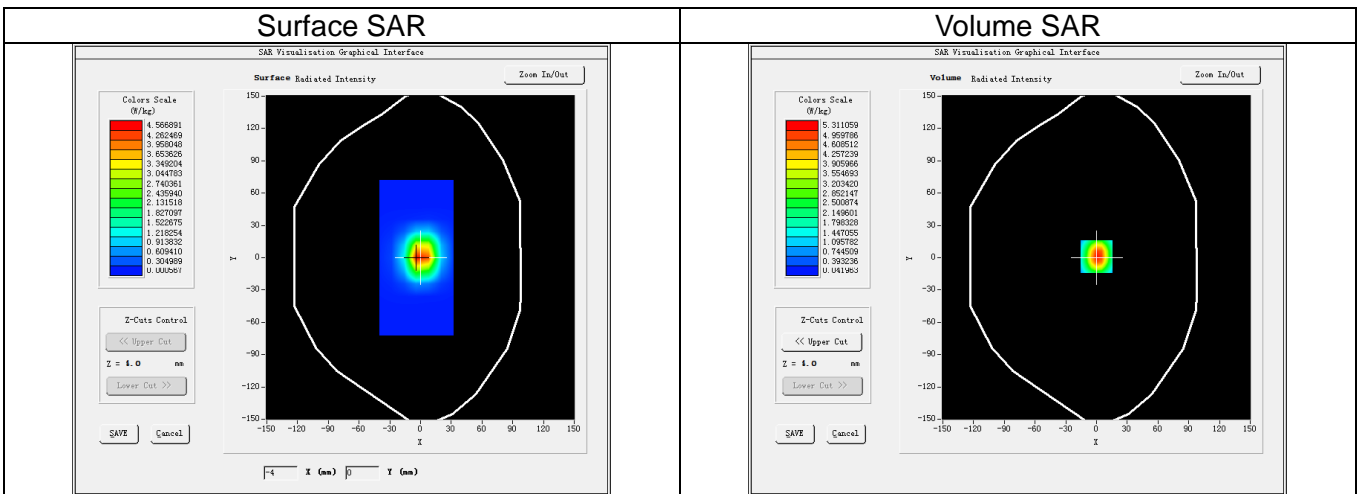


12. Appendix B. System Check Plots

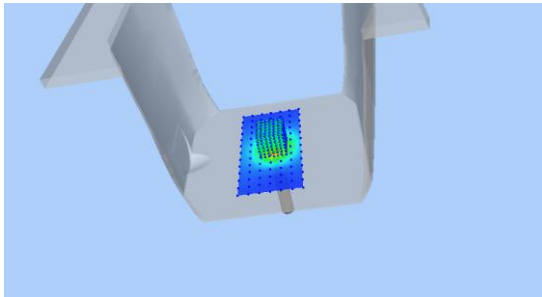
| |
|---|
| Table of contents |
| System Performance Check - 2450MHz |
| System Performance Check - 5200MHz |
| System Performance Check - 5800MHz |

System Performance Check - 2450MHz

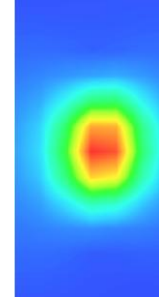
| | |
|----------------------|---|
| Date of measurement: | Mar. 15, 2017 |
| Signal: | Communication System: CW; Frequency: 2450MHz; Duty Cycle: 1:1.00 |
| ConvF: | 2.10 |
| Liquid Parameters: | Relative permittivity (real part): 51.99; Conductivity (S/m): 1.98; |
| Device Position: | Dipole |
| Area Scan: | dx=12mm dy=12mm, h=5.00mm |
| Zoom Scan: | 7x7x7, dx=5mm dy=5mm dz=5mm, h=5.00mm |



3D screen shot

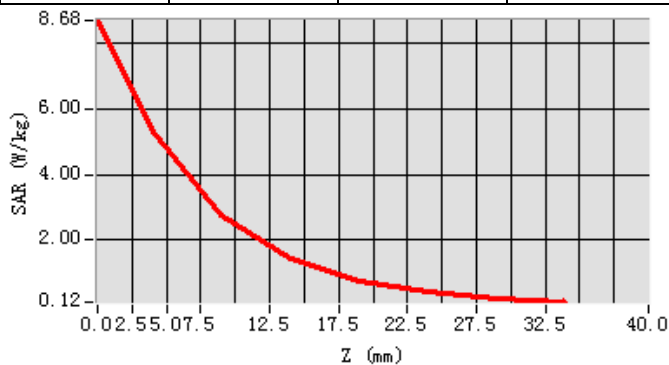


Hot spot position



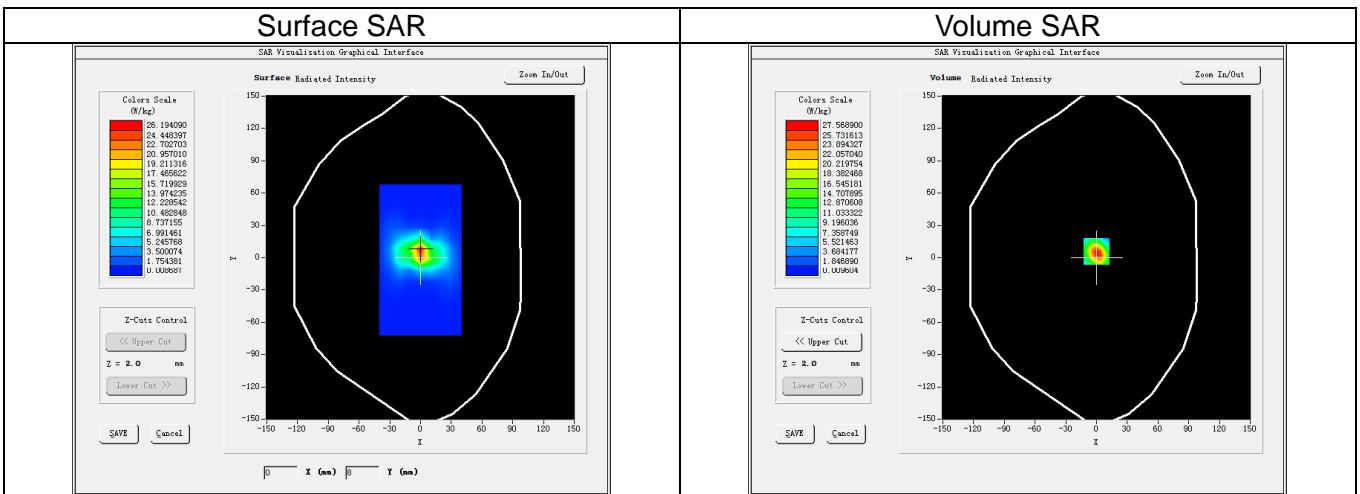
Maximum location: X=0.00, Y=1.00
SAR Peak: 8.70 W/kg

| | | | | | | | |
|--------------------|--------|--------|--------|--------|--------|--------|--------|
| SAR 1g (W/Kg) | | 4.941 | | | | | |
| SAR 10g (W/Kg) | | 2.357 | | | | | |
| Power Drift (±5%): | | -0.19 | | | | | |
| Z (mm) | 0.00 | 4.00 | 9.00 | 14.00 | 19.00 | 24.00 | 29.00 |
| SAR (W/Kg) | 8.6809 | 5.3111 | 2.7592 | 1.4539 | 0.7789 | 0.4153 | 0.2232 |

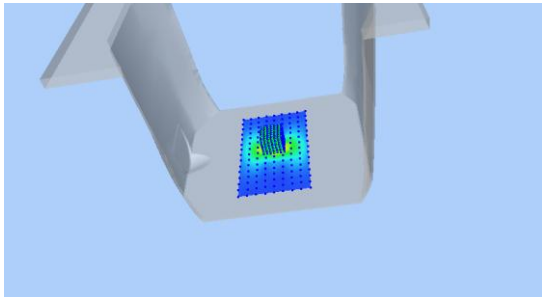


System Performance Check - 5200MHz

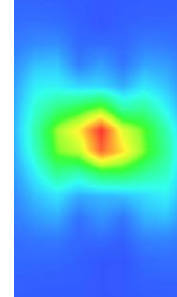
| | |
|----------------------|---|
| Date of measurement: | Mar. 17, 2017 |
| Signal: | Communication System: CW; Frequency: 5200MHz; Duty Cycle: 1:1.00 |
| ConvF: | 2.04 |
| Liquid Parameters: | Relative permittivity (real part): 49.80; Conductivity (S/m): 5.27; |
| Device Position: | Dipole |
| Area Scan: | dx=10mm dy=10mm, h=5.00mm |
| Zoom Scan: | 7x7x12, dx=4mm dy=4mm dz=2mm, h=5.00mm |



3D screen shot

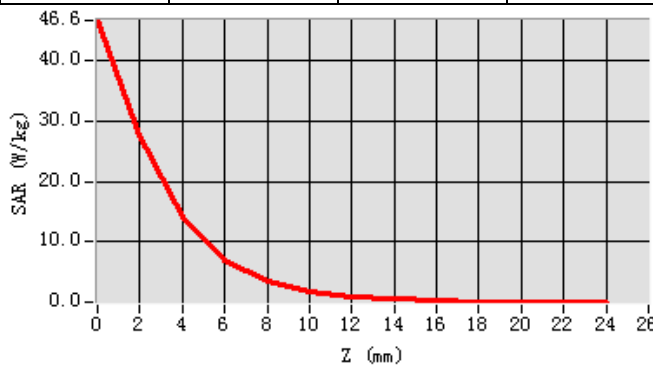


Hot spot position



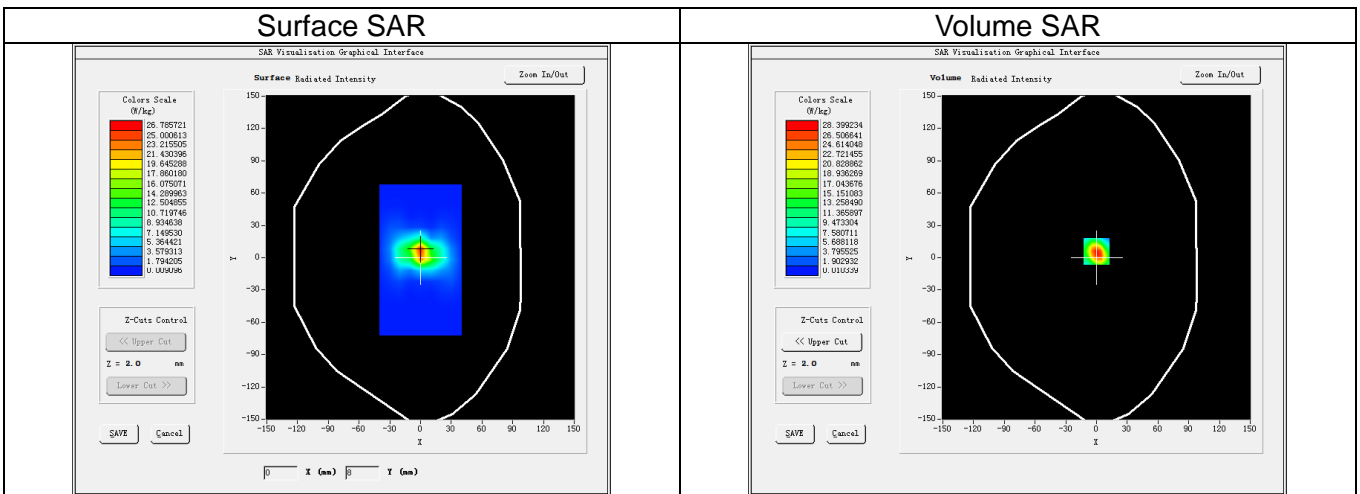
Maximum location: X=0.00, Y=6.00
SAR Peak: 49.61 W/kg

| | | | | | | | |
|--------------------|---------|---------|--------|--------|--------|--------|--------|
| SAR 1g (W/Kg) | | 15.597 | | | | | |
| SAR 10g (W/Kg) | | 5.409 | | | | | |
| Power Drift (±5%): | | -0.59 | | | | | |
| Z (mm) | 0.00 | 4.00 | 8.00 | 12.00 | 16.00 | 20.00 | 22.00 |
| SAR (W/Kg) | 46.6126 | 14.0604 | 3.5943 | 0.8986 | 0.2436 | 0.0618 | 0.0470 |

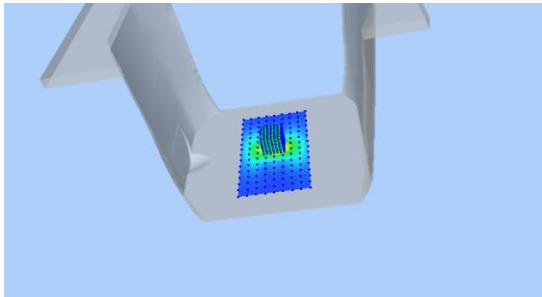


System Performance Check - 5800MHz

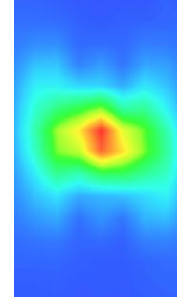
| | |
|----------------------|---|
| Date of measurement: | Mar. 17, 2017 |
| Signal: | Communication System: CW; Frequency: 5800MHz; Duty Cycle: 1:1.00 |
| ConvF: | 2.07 |
| Liquid Parameters: | Relative permittivity (real part): 48.83; Conductivity (S/m): 6.00; |
| Device Position: | Dipole |
| Area Scan: | dx=10mm dy=10mm, h=5.00mm |
| Zoom Scan: | 7x7x12, dx=4mm dy=4mm dz=2mm, h=5.00mm |



3D screen shot

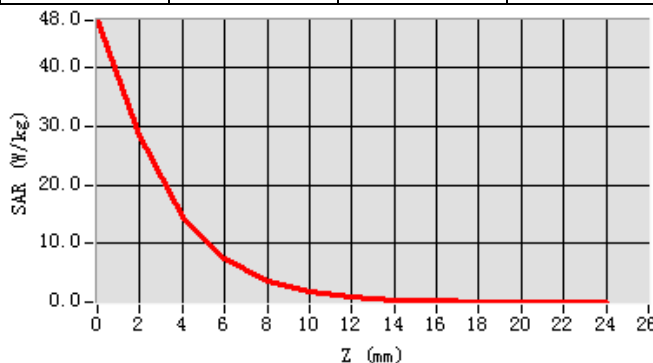


Hot spot position



Maximum location: X=0.00, Y=6.00
SAR Peak: 50.97 W/kg

| | | | | | | | |
|--------------------|---------|---------|--------|--------|--------|--------|--------|
| SAR 1g (W/Kg) | | 16.257 | | | | | |
| SAR 10g (W/Kg) | | 5.688 | | | | | |
| Power Drift (±5%): | | -0.04 | | | | | |
| Z (mm) | 0.00 | 4.00 | 8.00 | 12.00 | 16.00 | 20.00 | 22.00 |
| SAR (W/Kg) | 48.0320 | 14.4533 | 3.6498 | 0.9246 | 0.2327 | 0.0578 | 0.0458 |

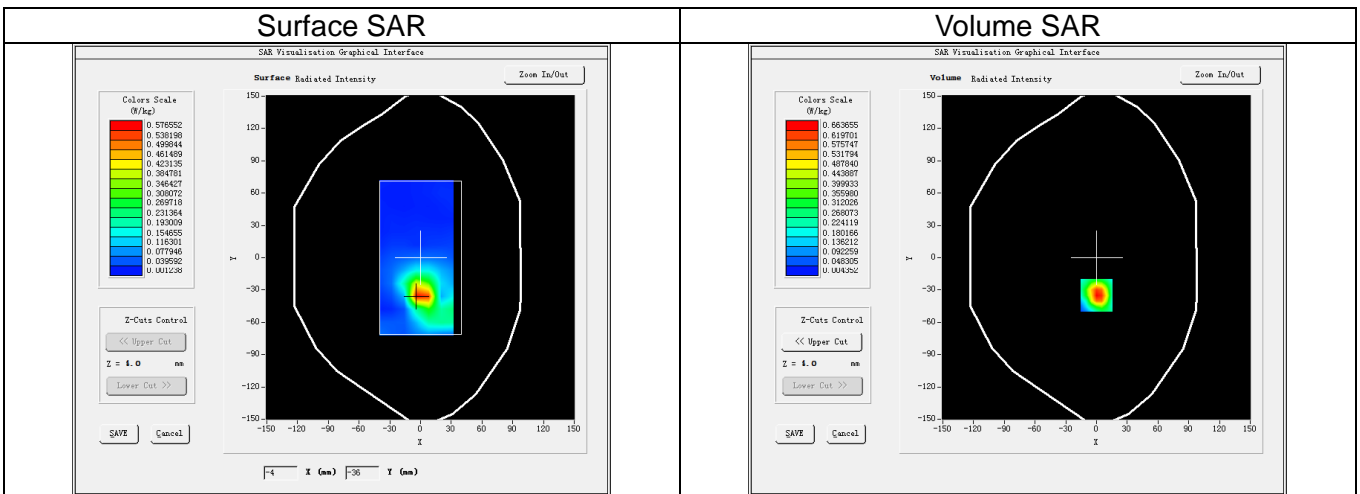


13. Appendix C. Plots of High SAR Measurement

| Table of contents |
|-------------------|
| Wi-Fi 2.4G Body |
| Wi-Fi 5.2G Body |
| Wi-Fi 5.8G Body |

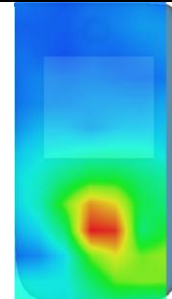
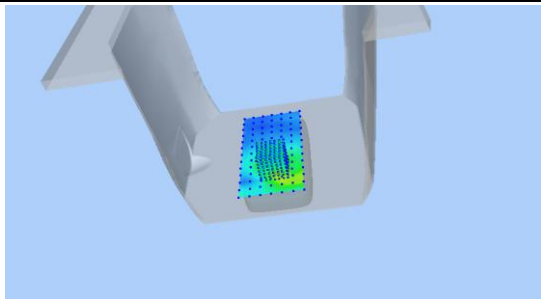
Wi-Fi 2.4G_802.11b_Ch6_Front Side_0mm

| | |
|----------------------|--|
| Date of measurement: | Mar. 15, 2017 |
| Signal: | Communication System: Wi-Fi 802.11a/b/g/n/ac; Frequency: 2437MHz; Duty Cycle: 1:1.00 |
| ConvF: | 2.10 |
| Liquid Parameters: | Relative permittivity (real part): 52.06; Conductivity (S/m): 1.96; |
| Device Position: | Body |
| Area Scan: | dx=12mm dy=12mm, h=5.00mm |
| Zoom Scan: | 7x7x7, dx=5mm dy=5mm dz=5mm, h=5.00mm |



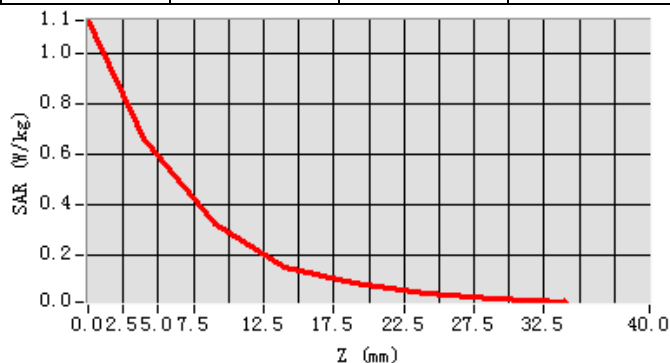
3D screen shot

Hot spot position



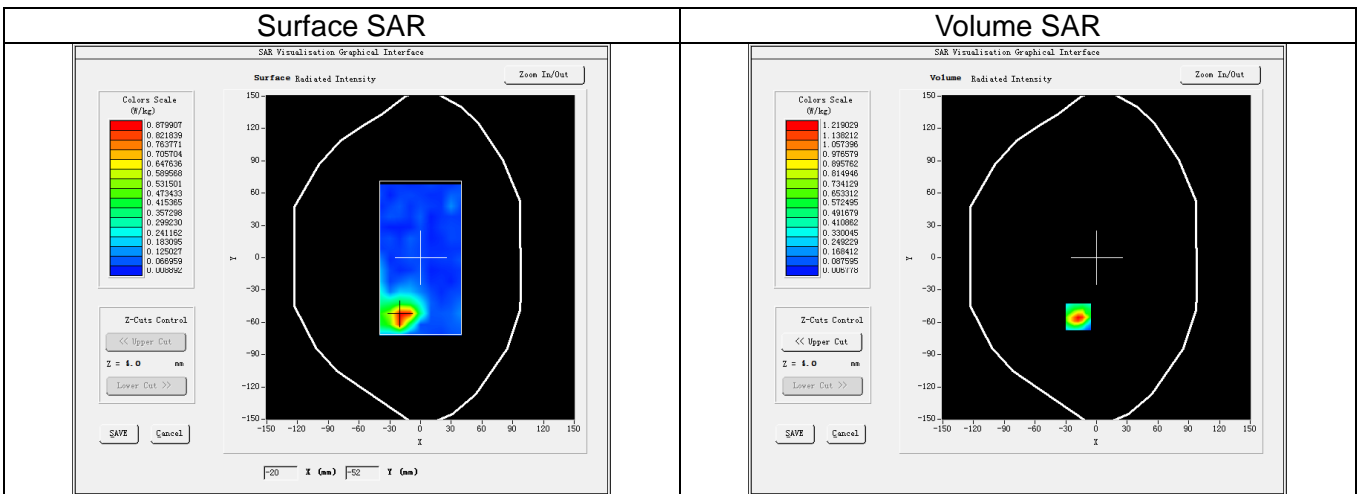
Maximum location: X=0.00, Y=-35.00
SAR Peak: 1.15 W/kg

| | | | | | | | |
|--------------------|--------|--------|--------|--------|--------|--------|--------|
| SAR 1g (W/Kg) | | 0.371 | | | | | |
| SAR 10g (W/Kg) | | 0.159 | | | | | |
| Power Drift (±5%): | | -0.52 | | | | | |
| Z (mm) | 0.00 | 4.00 | 9.00 | 14.00 | 19.00 | 24.00 | 29.00 |
| SAR (W/Kg) | 1.1346 | 0.6637 | 0.3290 | 0.1524 | 0.0927 | 0.0496 | 0.0271 |



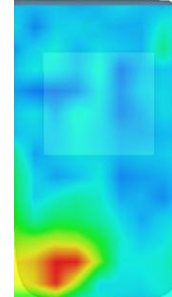
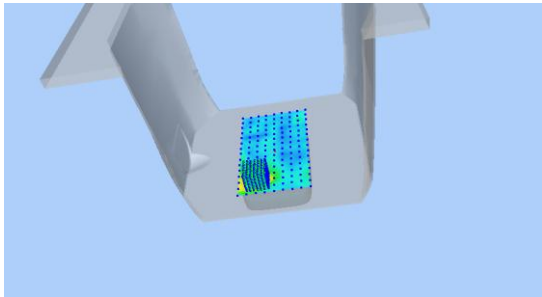
Wi-Fi 5.2G_802.11a_Ch48_Front Side_0mm

| | |
|----------------------|--|
| Date of measurement: | Mar. 17, 2017 |
| Signal: | Communication System: Wi-Fi 802.11a/b/g/n/ac; Frequency: 5240MHz; Duty Cycle: 1:1.00 |
| ConvF: | 2.04 |
| Liquid Parameters: | Relative permittivity (real part): 49.65; Conductivity (S/m): 5.31; |
| Device Position: | Body |
| Area Scan: | dx=10mm dy=10mm, h=5.00mm |
| Zoom Scan: | 7x7x12, dx=4mm dy=4mm dz=2mm, h=5.00mm |



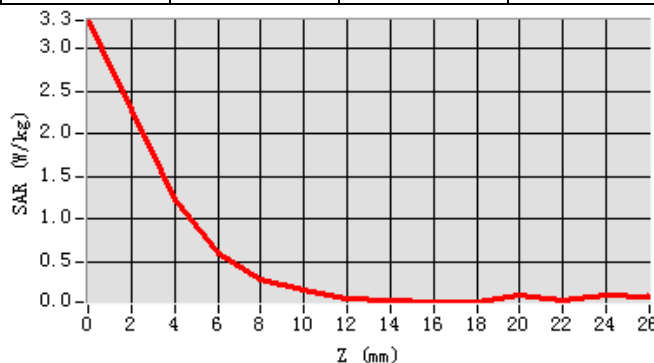
3D screen shot

Hot spot position



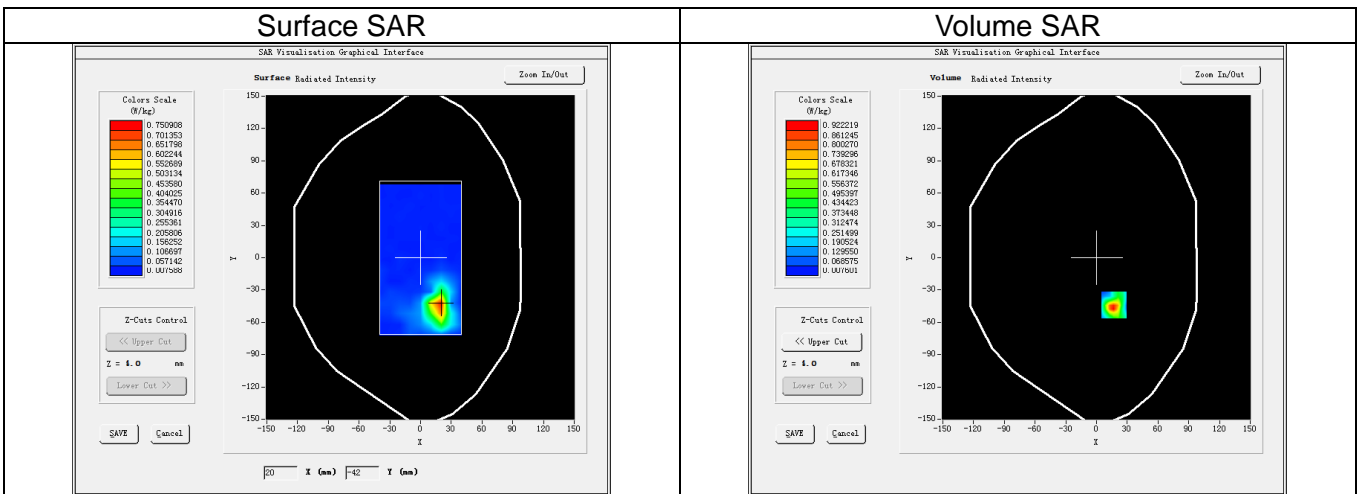
Maximum location: X=-18.00, Y=-55.00
SAR Peak: 3.46 W/kg

| | | | | | | | |
|--------------------|--------|--------|--------|--------|--------|--------|--------|
| SAR 1g (W/Kg) | | 0.744 | | | | | |
| SAR 10g (W/Kg) | | 0.299 | | | | | |
| Power Drift (±5%): | | -4.66 | | | | | |
| Z (mm) | 0.00 | 6.00 | 10.00 | 14.00 | 18.00 | 22.00 | 24.00 |
| SAR (W/Kg) | 3.3368 | 0.5970 | 0.1631 | 0.0471 | 0.0291 | 0.0340 | 0.0934 |

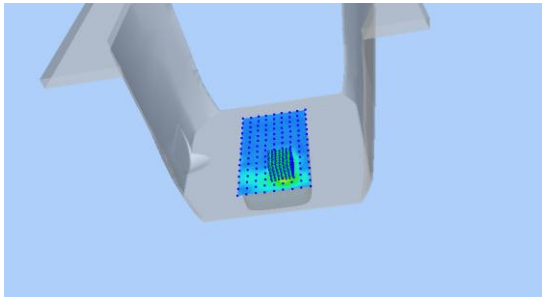


Wi-Fi 5.8G_802.11a_Ch149_Back Side_0mm

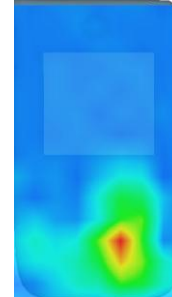
| | |
|----------------------|--|
| Date of measurement: | Mar. 17, 2017 |
| Signal: | Communication System: Wi-Fi 802.11a/b/g/n/ac; Frequency: 5745MHz; Duty Cycle: 1:1.00 |
| ConvF: | 2.07 |
| Liquid Parameters: | Relative permittivity (real part): 48.96; Conductivity (S/m): 5.95; |
| Device Position: | Body |
| Area Scan: | dx=10mm dy=10mm, h=5.00mm |
| Zoom Scan: | 7x7x12, dx=4mm dy=4mm dz=2mm, h=5.00mm |



3D screen shot

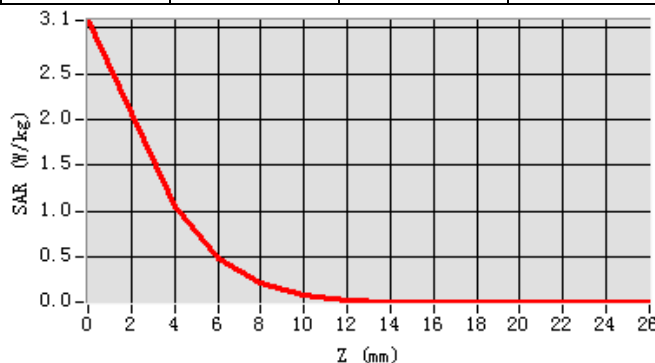


Hot spot position



Maximum location: X=17.00, Y=-44.00
SAR Peak: 2.69 W/kg

| | | | | | | | |
|--------------------|--------|--------|--------|--------|--------|--------|--------|
| SAR 1g (W/Kg) | | 0.674 | | | | | |
| SAR 10g (W/Kg) | | 0.256 | | | | | |
| Power Drift (±5%): | | -3.79 | | | | | |
| Z (mm) | 0.00 | 6.00 | 10.00 | 14.00 | 18.00 | 22.00 | 24.00 |
| SAR (W/Kg) | 3.0769 | 0.4916 | 0.0980 | 0.0169 | 0.0154 | 0.0166 | 0.0160 |



14. Appendix D. Calibration Certificate

| Table of contents |
|--|
| E Field Probe - SN 08/16 EPGO287 |
| 2450 MHz Dipole - SN 03/15 DIP 2G450-352 |
| 5000-6000 MHz Dipole - SN 13/14 WGA 33 |
| Extended Calibration Certificate |



COMOSAR E-Field Probe Calibration Report

Ref : ACR.263.1.16.SATU.A

NTEK TESTING TECHNOLOGY CO., LTD.
BUILDING E, FENDA SCIENCE PARK, SANWEI
COMMUNITY, XIXIANG STREET,
BAO'AN DISTRICT, SHENZHEN GUANGDONG, CHINA
MVG COMOSAR DOSIMETRIC E-FIELD PROBE
SERIAL NO.: SN 08/16 EPGO287

Calibrated at MVG US
2105 Barrett Park Dr. - Kennesaw, GA 30144



Calibration Date: 09/08/2016

Summary:

This document presents the method and results from an accredited COMOSAR Dosimetric E-Field Probe calibration performed in MVG USA using the CALISAR / CALIBAIR test bench, for use with a COMOSAR system only. All calibration results are traceable to national metrology institutions.



COMOSAR E-FIELD PROBE CALIBRATION REPORT

Ref: ACR.263.1.16.SATU.A

| | <i>Name</i> | <i>Function</i> | <i>Date</i> | <i>Signature</i> |
|----------------------|---------------|-----------------|-------------|----------------------|
| <i>Prepared by :</i> | Jérôme LUC | Product Manager | 9/19/2016 | <i>JL</i> |
| <i>Checked by :</i> | Jérôme LUC | Product Manager | 9/19/2016 | <i>JL</i> |
| <i>Approved by :</i> | Kim RUTKOWSKI | Quality Manager | 9/19/2016 | <i>Kim Rutkowski</i> |

| | |
|-----------------------|---|
| | <i>Customer Name</i> |
| <i>Distribution :</i> | NTEK TESTING TECHNOLOGY CO., LTD. |

| <i>Issue</i> | <i>Date</i> | <i>Modifications</i> |
|--------------|-------------|----------------------|
| A | 9/19/2016 | Initial release |
| | | |
| | | |



COMOSAR E-FIELD PROBE CALIBRATION REPORT

Ref: ACR.263.1.16.SATU.A

TABLE OF CONTENTS

1 Device Under Test 4

2 Product Description 4

 2.1 General Information 4

3 Measurement Method 4

 3.1 Linearity 4

 3.2 Sensitivity 5

 3.3 Lower Detection Limit 5

 3.4 Isotropy 5

 3.5 Boundary Effect 5

4 Measurement Uncertainty 5

5 Calibration Measurement Results 6

 5.1 Sensitivity in air 6

 5.2 Linearity 7

 5.3 Sensitivity in liquid 7

 5.4 Isotropy 8

6 List of Equipment 10



COMOSAR E-FIELD PROBE CALIBRATION REPORT

Ref: ACR.263.1.16.SATU.A

1 DEVICE UNDER TEST

| Device Under Test | |
|--|---|
| Device Type | COMOSAR DOSIMETRIC E FIELD PROBE |
| Manufacturer | MVG |
| Model | SSE2 |
| Serial Number | SN 08/16 EPGO287 |
| Product Condition (new / used) | New |
| Frequency Range of Probe | 0.7 GHz-6GHz |
| Resistance of Three Dipoles at Connector | Dipole 1: R1=0.206 MΩ Dipole 2: R2=0.193 MΩ Dipole 3: R3=0.194 MΩ |

A yearly calibration interval is recommended.

2 PRODUCT DESCRIPTION

2.1 GENERAL INFORMATION

MVG’s COMOSAR E field Probes are built in accordance to the IEEE 1528, OET 65 Bulletin C and CEI/IEC 62209 standards.



Figure 1 – MVG COMOSAR Dosimetric E field Dipole

| | |
|--|--------|
| Probe Length | 330 mm |
| Length of Individual Dipoles | 2 mm |
| Maximum external diameter | 8 mm |
| Probe Tip External Diameter | 2.5 mm |
| Distance between dipoles / probe extremity | 1 mm |

3 MEASUREMENT METHOD

The IEEE 1528, OET 65 Bulletin C, CENELEC EN50361 and CEI/IEC 62209 standards provide recommended practices for the probe calibrations, including the performance characteristics of interest and methods by which to assess their affect. All calibrations / measurements performed meet the fore mentioned standards.

3.1 LINEARITY

The evaluation of the linearity was done in free space using the waveguide, performing a power sweep to cover the SAR range 0.01W/kg to 100W/kg.



COMOSAR E-FIELD PROBE CALIBRATION REPORT

Ref: ACR.263.1.16.SATU.A

3.2 SENSITIVITY

The sensitivity factors of the three dipoles were determined using a two step calibration method (air and tissue simulating liquid) using waveguides as outlined in the standards.

3.3 LOWER DETECTION LIMIT

The lower detection limit was assessed using the same measurement set up as used for the linearity measurement. The required lower detection limit is 10 mW/kg.

3.4 ISOTROPY

The axial isotropy was evaluated by exposing the probe to a reference wave from a standard dipole with the dipole mounted under the flat phantom in the test configuration suggested for system validations and checks. The probe was rotated along its main axis from 0 - 360 degrees in 15 degree steps. The hemispherical isotropy is determined by inserting the probe in a thin plastic box filled with tissue-equivalent liquid, with the plastic box illuminated with the fields from a half wave dipole. The dipole is rotated about its axis (0°–180°) in 15° increments. At each step the probe is rotated about its axis (0°–360°).

3.5 BOUNDARY EFFECT

The boundary effect is defined as the deviation between the SAR measured data and the expected exponential decay in the liquid when the probe is oriented normal to the interface. To evaluate this effect, the liquid filled flat phantom is exposed to fields from either a reference dipole or waveguide. With the probe normal to the phantom surface, the peak spatial average SAR is measured and compared to the analytical value at the surface.

4 MEASUREMENT UNCERTAINTY

The guidelines outlined in the IEEE 1528, OET 65 Bulletin C, CENELEC EN50361 and CEI/IEC 62209 standards were followed to generate the measurement uncertainty associated with an E-field probe calibration using the waveguide technique. All uncertainties listed below represent an expanded uncertainty expressed at approximately the 95% confidence level using a coverage factor of k=2, traceable to the Internationally Accepted Guides to Measurement Uncertainty.

| Uncertainty analysis of the probe calibration in waveguide | | | | | |
|--|-----------------------|--------------------------|------------|----|--------------------------|
| ERROR SOURCES | Uncertainty value (%) | Probability Distribution | Divisor | ci | Standard Uncertainty (%) |
| Incident or forward power | 3.00% | Rectangular | $\sqrt{3}$ | 1 | 1.732% |
| Reflected power | 3.00% | Rectangular | $\sqrt{3}$ | | 1.732% |
| Liquid conductivity | 5.00% | Rectangular | $\sqrt{3}$ | | 2.887% |
| Liquid permittivity | 4.00% | Rectangular | $\sqrt{3}$ | | 2.309% |
| Field homogeneity | 3.00% | Rectangular | $\sqrt{3}$ | | 1.732% |
| Field probe positioning | 5.00% | Rectangular | $\sqrt{3}$ | | 2.887% |



COMOSAR E-FIELD PROBE CALIBRATION REPORT

Ref. ACR.263.1.16.SATU.A

| | | | | | |
|--|-------|-------------|------------|---|--------|
| Field probe linearity | 3.00% | Rectangular | $\sqrt{3}$ | 1 | 1.732% |
| Combined standard uncertainty | | | | | 5.831% |
| Expanded uncertainty 95 % confidence level k = 2 | | | | | 12.0% |

5 CALIBRATION MEASUREMENT RESULTS

| Calibration Parameters | |
|------------------------|-------|
| Liquid Temperature | 21 °C |
| Lab Temperature | 21 °C |
| Lab Humidity | 45 % |

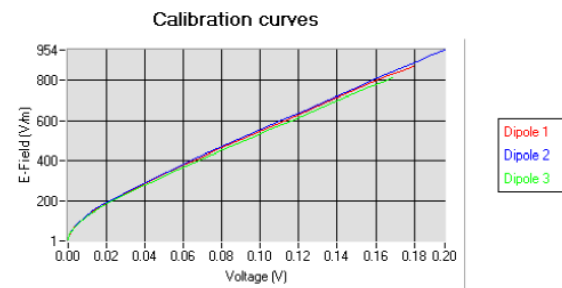
5.1 SENSITIVITY IN AIR

| Normx dipole 1 ($\mu\text{V}/(\text{V}/\text{m})^2$) | Normy dipole 2 ($\mu\text{V}/(\text{V}/\text{m})^2$) | Normz dipole 3 ($\mu\text{V}/(\text{V}/\text{m})^2$) |
|---|---|---|
| 0.70 | 0.81 | 0.63 |

| DCP dipole 1 (mV) | DCP dipole 2 (mV) | DCP dipole 3 (mV) |
|----------------------|----------------------|----------------------|
| 91 | 90 | 94 |

Calibration curves $e_i=f(V)$ ($i=1,2,3$) allow to obtain H-field value using the formula:

$$E = \sqrt{E_1^2 + E_2^2 + E_3^2}$$

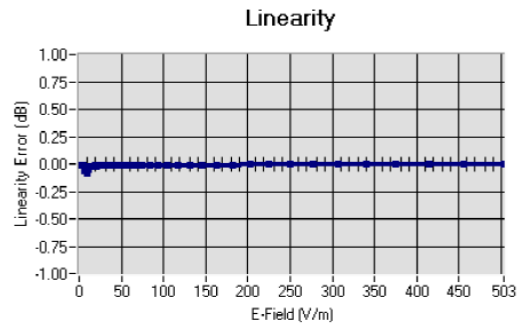




COMOSAR E-FIELD PROBE CALIBRATION REPORT

Ref: ACR.263.1.16.SATU.A

5.2 LINEARITY



Linearity: $\pm 1.83\%$ ($\pm 0.08\text{dB}$)

5.3 SENSITIVITY IN LIQUID

| Liquid | Frequency (MHz +/- 100MHz) | Permittivity | Epsilon (S/m) | ConvF |
|--------|----------------------------|--------------|---------------|-------|
| HL450 | 450 | 42.17 | 0.86 | 1.51 |
| BL450 | 450 | 57.65 | 0.95 | 1.55 |
| HL750 | 750 | 40.03 | 0.93 | 1.36 |
| BL750 | 750 | 56.83 | 1.00 | 1.41 |
| HL850 | 835 | 42.19 | 0.90 | 1.53 |
| BL850 | 835 | 54.67 | 1.01 | 1.59 |
| HL900 | 900 | 42.08 | 1.01 | 1.43 |
| BL900 | 900 | 55.25 | 1.08 | 1.48 |
| HL1800 | 1800 | 41.68 | 1.46 | 1.66 |
| BL1800 | 1800 | 53.86 | 1.46 | 1.69 |
| HL1900 | 1900 | 38.45 | 1.45 | 1.94 |
| BL1900 | 1900 | 53.32 | 1.56 | 2.00 |
| HL2000 | 2000 | 38.26 | 1.38 | 1.87 |
| BL2000 | 2000 | 52.70 | 1.51 | 1.94 |
| HL2450 | 2450 | 37.50 | 1.80 | 2.03 |
| BL2450 | 2450 | 53.22 | 1.89 | 2.10 |
| HL2600 | 2600 | 39.80 | 1.99 | 2.11 |
| BL2600 | 2600 | 52.52 | 2.23 | 2.17 |
| HL5200 | 5200 | 35.64 | 4.67 | 1.99 |
| BL5200 | 5200 | 48.64 | 5.51 | 2.04 |
| HL5400 | 5400 | 36.44 | 4.87 | 2.09 |
| BL5400 | 5400 | 46.52 | 5.77 | 2.16 |
| HL5600 | 5600 | 36.66 | 5.17 | 2.10 |
| BL5600 | 5600 | 46.79 | 5.77 | 2.17 |
| HL5800 | 5800 | 35.31 | 5.31 | 2.02 |
| BL5800 | 5800 | 47.04 | 6.10 | 2.07 |

LOWER DETECTION LIMIT: 8mW/kg



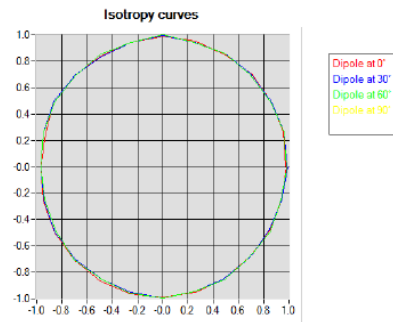
COMOSAR E-FIELD PROBE CALIBRATION REPORT

Ref. ACR.263.1.16.SATU.A

5.4 ISOTROPY

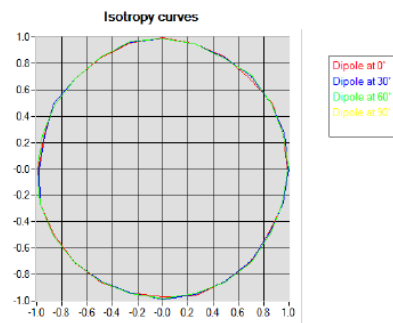
HL900 MHz

- Axial isotropy: 0.04 dB
- Hemispherical isotropy: 0.07 dB



HL1800 MHz

- Axial isotropy: 0.05 dB
- Hemispherical isotropy: 0.07 dB



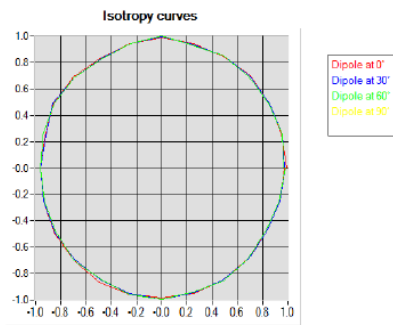


COMOSAR E-FIELD PROBE CALIBRATION REPORT

Ref: ACR.263.1.16.SATU.A

HL5600 MHz

- Axial isotropy: 0.06 dB
- Hemispherical isotropy: 0.10 dB





COMOSAR E-FIELD PROBE CALIBRATION REPORT

Ref: ACR.263.1.16.SATU.A

6 LIST OF EQUIPMENT

| Equipment Summary Sheet | | | | |
|-------------------------------|----------------------|--------------------|---|---|
| Equipment Description | Manufacturer / Model | Identification No. | Current Calibration Date | Next Calibration Date |
| Flat Phantom | MVG | SN-20/09-SAM71 | Validated. No cal required. | Validated. No cal required. |
| COMOSAR Test Bench | Version 3 | NA | Validated. No cal required. | Validated. No cal required. |
| Network Analyzer | Rhode & Schwarz ZVA | SN100132 | 02/2016 | 02/2019 |
| Reference Probe | MVG | EP 94 SN 37/08 | 10/2015 | 10/2016 |
| Multimeter | Keithley 2000 | 1188656 | 12/2013 | 12/2016 |
| Signal Generator | Agilent E4438C | MY49070581 | 12/2013 | 12/2016 |
| Amplifier | Aethercomm | SN 046 | Characterized prior to test. No cal required. | Characterized prior to test. No cal required. |
| Power Meter | HP E4418A | US38261498 | 12/2013 | 12/2016 |
| Power Sensor | HP ECP-E26A | US37181460 | 12/2013 | 12/2016 |
| Directional Coupler | Narda 4216-20 | 01386 | Characterized prior to test. No cal required. | Characterized prior to test. No cal required. |
| Waveguide | Mega Industries | 069Y7-158-13-712 | Validated. No cal required. | Validated. No cal required. |
| Waveguide Transition | Mega Industries | 069Y7-158-13-701 | Validated. No cal required. | Validated. No cal required. |
| Waveguide Termination | Mega Industries | 069Y7-158-13-701 | Validated. No cal required. | Validated. No cal required. |
| Temperature / Humidity Sensor | Control Company | 150798832 | 10/2015 | 10/2017 |



SAR Reference Dipole Calibration Report

Ref : ACR.139.9.15.SATU.A

NTEK TESTING TECHNOLOGY CO., LTD.
BUILDING E, FENDA SCIENCE PARK, SANWEI
COMMUNITY, XIXIANG STREET,
BAO'AN DISTRICT, SHENZHEN GUANGDONG, CHINA
MVG COMOSAR REFERENCE DIPOLE
FREQUENCY: 2450 MHZ
SERIAL NO.: SN 03/15 DIP 2G450-352

Calibrated at MVG US
2105 Barrett Park Dr. - Kennesaw, GA 30144



04/06/2015

Summary:

This document presents the method and results from an accredited SAR reference dipole calibration performed in MVG USA using the COMOSAR test bench. All calibration results are traceable to national metrology institutions.



SAR REFERENCE DIPOLE CALIBRATION REPORT

Ref: ACR.139.9.15.SATU.A

| | <i>Name</i> | <i>Function</i> | <i>Date</i> | <i>Signature</i> |
|----------------------|---------------|-----------------|-------------|----------------------|
| <i>Prepared by :</i> | Jérôme LUC | Product Manager | 5/19/2015 | <i>JS</i> |
| <i>Checked by :</i> | Jérôme LUC | Product Manager | 5/19/2015 | <i>JS</i> |
| <i>Approved by :</i> | Kim RUTKOWSKI | Quality Manager | 5/19/2015 | <i>Kim Rutkowski</i> |

| | <i>Customer Name</i> |
|-----------------------|-----------------------------------|
| <i>Distribution :</i> | NTEK TESTING TECHNOLOGY CO., LTD. |

| <i>Issue</i> | <i>Date</i> | <i>Modifications</i> |
|--------------|-------------|----------------------|
| A | 5/19/2015 | Initial release |
| | | |
| | | |



TABLE OF CONTENTS

| | | |
|-----|--|----|
| 1 | Introduction..... | 4 |
| 2 | Device Under Test | 4 |
| 3 | Product Description | 4 |
| 3.1 | General Information | 4 |
| 4 | Measurement Method | 5 |
| 4.1 | Return Loss Requirements | 5 |
| 4.2 | Mechanical Requirements | 5 |
| 5 | Measurement Uncertainty..... | 5 |
| 5.1 | Return Loss | 5 |
| 5.2 | Dimension Measurement | 5 |
| 5.3 | Validation Measurement | 5 |
| 6 | Calibration Measurement Results..... | 6 |
| 6.1 | Return Loss and Impedance In Head Liquid | 6 |
| 6.2 | Return Loss and Impedance In Body Liquid | 6 |
| 6.3 | Mechanical Dimensions | 6 |
| 7 | Validation measurement | 7 |
| 7.1 | Head Liquid Measurement | 7 |
| 7.2 | SAR Measurement Result With Head Liquid | 8 |
| 7.3 | Body Liquid Measurement | 9 |
| 7.4 | SAR Measurement Result With Body Liquid | 10 |
| 8 | List of Equipment | 11 |



SAR REFERENCE DIPOLE CALIBRATION REPORT

Ref: ACR.139.9.15.SATU.A

1 INTRODUCTION

This document contains a summary of the requirements set forth by the IEEE 1528, FCC KDBs and CEI/IEC 62209 standards for reference dipoles used for SAR measurement system validations and the measurements that were performed to verify that the product complies with the fore mentioned standards.

2 DEVICE UNDER TEST

| Device Under Test | |
|--------------------------------|-----------------------------------|
| Device Type | COMOSAR 2450 MHz REFERENCE DIPOLE |
| Manufacturer | MVG |
| Model | SID2450 |
| Serial Number | SN 03/15 DIP 2G450-352 |
| Product Condition (new / used) | New |

A yearly calibration interval is recommended.

3 PRODUCT DESCRIPTION

3.1 GENERAL INFORMATION

MVG’s COMOSAR Validation Dipoles are built in accordance to the IEEE 1528, FCC KDBs and CEI/IEC 62209 standards. The product is designed for use with the COMOSAR test bench only.



Figure 1 – MVG COMOSAR Validation Dipole



4 MEASUREMENT METHOD

The IEEE 1528, FCC KDBs and CEI/IEC 62209 standards provide requirements for reference dipoles used for system validation measurements. The following measurements were performed to verify that the product complies with the fore mentioned standards.

4.1 RETURN LOSS REQUIREMENTS

The dipole used for SAR system validation measurements and checks must have a return loss of -20 dB or better. The return loss measurement shall be performed against a liquid filled flat phantom, with the phantom constructed as outlined in the fore mentioned standards.

4.2 MECHANICAL REQUIREMENTS

The IEEE Std. 1528 and CEI/IEC 62209 standards specify the mechanical components and dimensions of the validation dipoles, with the dimensions frequency and phantom shell thickness dependent. The COMOSAR test bench employs a 2 mm phantom shell thickness therefore the dipoles sold for use with the COMOSAR test bench comply with the requirements set forth for a 2 mm phantom shell thickness.

5 MEASUREMENT UNCERTAINTY

All uncertainties listed below represent an expanded uncertainty expressed at approximately the 95% confidence level using a coverage factor of k=2, traceable to the Internationally Accepted Guides to Measurement Uncertainty.

5.1 RETURN LOSS

The following uncertainties apply to the return loss measurement:

| Frequency band | Expanded Uncertainty on Return Loss |
|----------------|-------------------------------------|
| 400-6000MHz | 0.1 dB |

5.2 DIMENSION MEASUREMENT

The following uncertainties apply to the dimension measurements:

| Length (mm) | Expanded Uncertainty on Length |
|-------------|--------------------------------|
| 3 - 300 | 0.05 mm |

5.3 VALIDATION MEASUREMENT

The guidelines outlined in the IEEE 1528, FCC KDBs, CENELEC EN50361 and CEI/IEC 62209 standards were followed to generate the measurement uncertainty for validation measurements.

| Scan Volume | Expanded Uncertainty |
|-------------|----------------------|
| 1 g | 20.3 % |



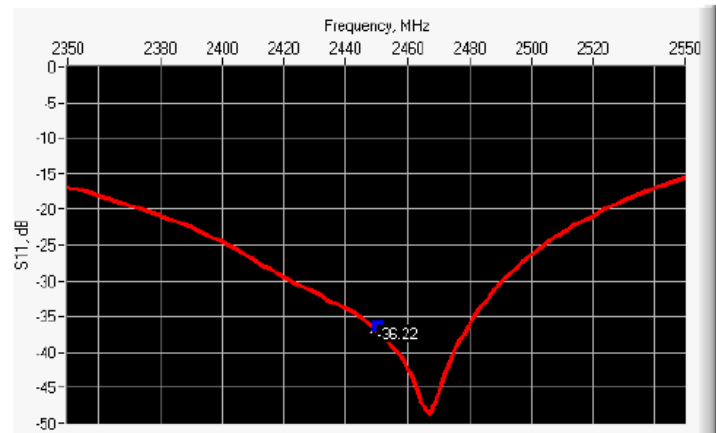
SAR REFERENCE DIPOLE CALIBRATION REPORT

Ref. ACR.139.9.15.SATU.A

| | |
|------|--------|
| 10 g | 20.1 % |
|------|--------|

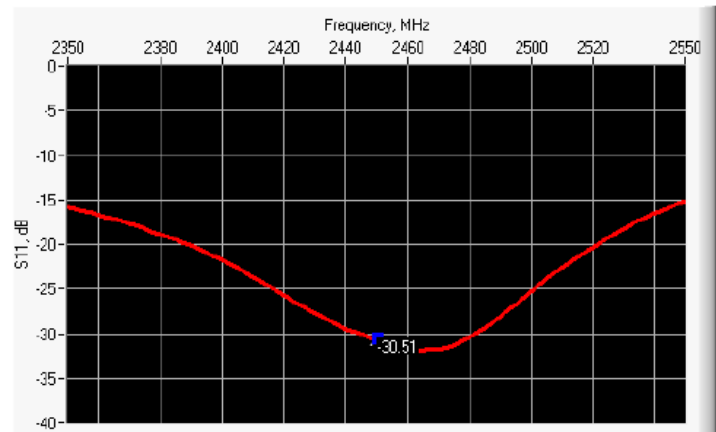
6 CALIBRATION MEASUREMENT RESULTS

6.1 RETURN LOSS AND IMPEDANCE IN HEAD LIQUID



| Frequency (MHz) | Return Loss (dB) | Requirement (dB) | Impedance |
|-----------------|------------------|------------------|-----------------|
| 2450 | -36.22 | -20 | 48.9 Ω + 1.1 jΩ |

6.2 RETURN LOSS AND IMPEDANCE IN BODY LIQUID



| Frequency (MHz) | Return Loss (dB) | Requirement (dB) | Impedance |
|-----------------|------------------|------------------|-----------------|
| 2450 | -30.51 | -20 | 52.2 Ω + 2.0 jΩ |

6.3 MECHANICAL DIMENSIONS

| Frequency MHz | L mm | | h mm | | d mm | |
|---------------|-------------|----------|-------------|----------|------------|----------|
| | required | measured | required | measured | required | measured |
| 300 | 420.0 ±1 %. | | 250.0 ±1 %. | | 6.35 ±1 %. | |



SAR REFERENCE DIPOLE CALIBRATION REPORT

Ref. ACR.139.9.15.SATU.A

| | | | | | | |
|------|-------------|------|-------------|------|------------|------|
| 450 | 290.0 ±1 %. | | 166.7 ±1 %. | | 6.35 ±1 %. | |
| 750 | 176.0 ±1 %. | | 100.0 ±1 %. | | 6.35 ±1 %. | |
| 835 | 161.0 ±1 %. | | 89.8 ±1 %. | | 3.6 ±1 %. | |
| 900 | 149.0 ±1 %. | | 83.3 ±1 %. | | 3.6 ±1 %. | |
| 1450 | 89.1 ±1 %. | | 51.7 ±1 %. | | 3.6 ±1 %. | |
| 1500 | 80.5 ±1 %. | | 50.0 ±1 %. | | 3.6 ±1 %. | |
| 1640 | 79.0 ±1 %. | | 45.7 ±1 %. | | 3.6 ±1 %. | |
| 1750 | 75.2 ±1 %. | | 42.9 ±1 %. | | 3.6 ±1 %. | |
| 1800 | 72.0 ±1 %. | | 41.7 ±1 %. | | 3.6 ±1 %. | |
| 1900 | 68.0 ±1 %. | | 39.5 ±1 %. | | 3.6 ±1 %. | |
| 1950 | 66.3 ±1 %. | | 38.5 ±1 %. | | 3.6 ±1 %. | |
| 2000 | 64.5 ±1 %. | | 37.5 ±1 %. | | 3.6 ±1 %. | |
| 2100 | 61.0 ±1 %. | | 35.7 ±1 %. | | 3.6 ±1 %. | |
| 2300 | 55.5 ±1 %. | | 32.6 ±1 %. | | 3.6 ±1 %. | |
| 2450 | 51.5 ±1 %. | PASS | 30.4 ±1 %. | PASS | 3.6 ±1 %. | PASS |
| 2600 | 48.5 ±1 %. | | 28.8 ±1 %. | | 3.6 ±1 %. | |
| 3000 | 41.5 ±1 %. | | 25.0 ±1 %. | | 3.6 ±1 %. | |
| 3500 | 37.0 ±1 %. | | 26.4 ±1 %. | | 3.6 ±1 %. | |
| 3700 | 34.7 ±1 %. | | 26.4 ±1 %. | | 3.6 ±1 %. | |

7 VALIDATION MEASUREMENT

The IEEE Std. 1528, FCC KDBs and CEI/IEC 62209 standards state that the system validation measurements must be performed using a reference dipole meeting the fore mentioned return loss and mechanical dimension requirements. The validation measurement must be performed against a liquid filled flat phantom, with the phantom constructed as outlined in the fore mentioned standards. Per the standards, the dipole shall be positioned below the bottom of the phantom, with the dipole length centered and parallel to the longest dimension of the flat phantom, with the top surface of the dipole at the described distance from the bottom surface of the phantom.

7.1 HEAD LIQUID MEASUREMENT

| Frequency MHz | Relative permittivity (ε _r) | | Conductivity (σ) S/m | |
|---------------|---|----------|----------------------|----------|
| | required | measured | required | measured |
| 300 | 45.3 ±5 % | | 0.87 ±5 % | |
| 450 | 43.5 ±5 % | | 0.87 ±5 % | |
| 750 | 41.9 ±5 % | | 0.89 ±5 % | |
| 835 | 41.5 ±5 % | | 0.90 ±5 % | |
| 900 | 41.5 ±5 % | | 0.97 ±5 % | |
| 1450 | 40.5 ±5 % | | 1.20 ±5 % | |
| 1500 | 40.4 ±5 % | | 1.23 ±5 % | |
| 1640 | 40.2 ±5 % | | 1.31 ±5 % | |
| 1750 | 40.1 ±5 % | | 1.37 ±5 % | |



SAR REFERENCE DIPOLE CALIBRATION REPORT

Ref: ACR.139.9.15.SATU.A

| | | | | |
|------|-----------|------|-----------|------|
| 1800 | 40.0 ±5 % | | 1.40 ±5 % | |
| 1900 | 40.0 ±5 % | | 1.40 ±5 % | |
| 1950 | 40.0 ±5 % | | 1.40 ±5 % | |
| 2000 | 40.0 ±5 % | | 1.40 ±5 % | |
| 2100 | 39.8 ±5 % | | 1.49 ±5 % | |
| 2300 | 39.5 ±5 % | | 1.67 ±5 % | |
| 2450 | 39.2 ±5 % | PASS | 1.80 ±5 % | PASS |
| 2600 | 39.0 ±5 % | | 1.96 ±5 % | |
| 3000 | 38.5 ±5 % | | 2.40 ±5 % | |
| 3500 | 37.9 ±5 % | | 2.91 ±5 % | |

7.2 SAR MEASUREMENT RESULT WITH HEAD LIQUID

The IEEE Std. 1528 and CEI/IEC 62209 standards state that the system validation measurements should produce the SAR values shown below (for phantom thickness of 2 mm), within the uncertainty for the system validation. All SAR values are normalized to 1 W forward power. In bracket, the measured SAR is given with the used input power.

| | |
|---|--|
| Software | OPENSAR V4 |
| Phantom | SN 20/09 SAM71 |
| Probe | SN 18/11 EPG122 |
| Liquid | Head Liquid Values: eps' : 38.3 sigma : 1.80 |
| Distance between dipole center and liquid | 10.0 mm |
| Area scan resolution | dx=8mm/dy=8mm |
| Zoon Scan Resolution | dx=5mm/dy=5mm/dz=5mm |
| Frequency | 2450 MHz |
| Input power | 20 dBm |
| Liquid Temperature | 21 °C |
| Lab Temperature | 21 °C |
| Lab Humidity | 45 % |

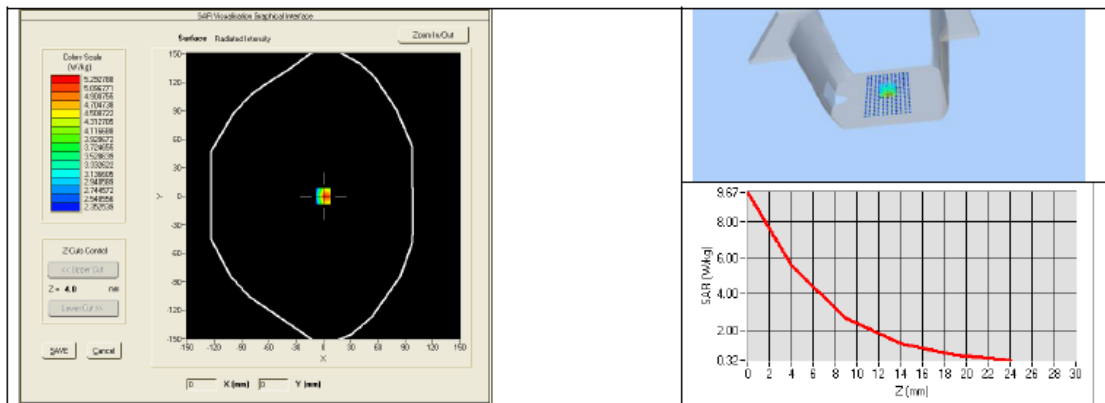
| Frequency MHz | 1 g SAR (W/kg/W) | | 10 g SAR (W/kg/W) | |
|---------------|------------------|----------|-------------------|----------|
| | required | measured | required | measured |
| 300 | 2.85 | | 1.94 | |
| 450 | 4.58 | | 3.06 | |
| 750 | 8.49 | | 5.55 | |
| 835 | 9.56 | | 6.22 | |
| 900 | 10.9 | | 6.99 | |
| 1450 | 29 | | 16 | |
| 1500 | 30.5 | | 16.8 | |
| 1640 | 34.2 | | 18.4 | |
| 1750 | 36.4 | | 19.3 | |
| 1800 | 38.4 | | 20.1 | |



SAR REFERENCE DIPOLE CALIBRATION REPORT

Ref. ACR.139.9.15.SATU.A

| | | | | |
|------|------|--------------|------|--------------|
| 1900 | 39.7 | | 20.5 | |
| 1950 | 40.5 | | 20.9 | |
| 2000 | 41.1 | | 21.1 | |
| 2100 | 43.6 | | 21.9 | |
| 2300 | 48.7 | | 23.3 | |
| 2450 | 52.4 | 52.28 (5.23) | 24 | 23.80 (2.38) |
| 2600 | 55.3 | | 24.6 | |
| 3000 | 63.8 | | 25.7 | |
| 3500 | 67.1 | | 25 | |



7.3 BODY LIQUID MEASUREMENT

| Frequency MHz | Relative permittivity (ϵ_r) | | Conductivity (σ) S/m | |
|---------------|--|----------|-------------------------------|----------|
| | required | measured | required | measured |
| 150 | 61.9 ±5 % | | 0.80 ±5 % | |
| 300 | 58.2 ±5 % | | 0.92 ±5 % | |
| 450 | 56.7 ±5 % | | 0.94 ±5 % | |
| 750 | 55.5 ±5 % | | 0.96 ±5 % | |
| 835 | 55.2 ±5 % | | 0.97 ±5 % | |
| 900 | 55.0 ±5 % | | 1.05 ±5 % | |
| 915 | 55.0 ±5 % | | 1.06 ±5 % | |
| 1450 | 54.0 ±5 % | | 1.30 ±5 % | |
| 1610 | 53.8 ±5 % | | 1.40 ±5 % | |
| 1800 | 53.3 ±5 % | | 1.52 ±5 % | |
| 1900 | 53.3 ±5 % | | 1.52 ±5 % | |
| 2000 | 53.3 ±5 % | | 1.52 ±5 % | |
| 2100 | 53.2 ±5 % | | 1.62 ±5 % | |
| 2450 | 52.7 ±5 % | PASS | 1.95 ±5 % | PASS |



SAR REFERENCE DIPOLE CALIBRATION REPORT

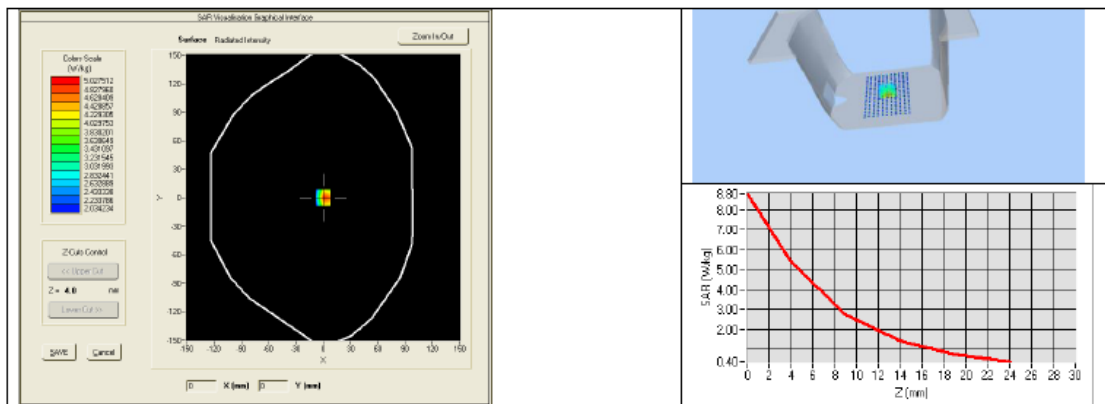
Ref. ACR.139.9.15.SATU.A

| | | | |
|------|------------|--|------------|
| 2600 | 52.5 ±5 % | | 2.16 ±5 % |
| 3000 | 52.0 ±5 % | | 2.73 ±5 % |
| 3500 | 51.3 ±5 % | | 3.31 ±5 % |
| 5200 | 49.0 ±10 % | | 5.30 ±10 % |
| 5300 | 48.9 ±10 % | | 5.42 ±10 % |
| 5400 | 48.7 ±10 % | | 5.53 ±10 % |
| 5500 | 48.6 ±10 % | | 5.65 ±10 % |
| 5600 | 48.5 ±10 % | | 5.77 ±10 % |
| 5800 | 48.2 ±10 % | | 6.00 ±10 % |

7.4 SAR MEASUREMENT RESULT WITH BODY LIQUID

| | |
|---|--|
| Software | OPENSAR V4 |
| Phantom | SN 20/09 SAM71 |
| Probe | SN 18/11 EPG122 |
| Liquid | Body Liquid Values: ϵ_{ps} : 52.7 σ : 1.94 |
| Distance between dipole center and liquid | 10.0 mm |
| Area scan resolution | dx=8mm/dy=8mm |
| Zoon Scan Resolution | dx=5mm/dy=5mm/dz=5mm |
| Frequency | 2450 MHz |
| Input power | 20 dBm |
| Liquid Temperature | 21 °C |
| Lab Temperature | 21 °C |
| Lab Humidity | 45 % |

| Frequency MHz | 1 g SAR (W/kg/W) | 10 g SAR (W/kg/W) |
|---------------|------------------|-------------------|
| | measured | measured |
| 2450 | 49.32 (4.93) | 22.89 (2.29) |





SAR REFERENCE DIPOLE CALIBRATION REPORT

Ref. ACR.139.9.15.SATU.A

8 LIST OF EQUIPMENT

| Equipment Summary Sheet | | | | |
|---------------------------------|----------------------|--------------------|---|---|
| Equipment Description | Manufacturer / Model | Identification No. | Current Calibration Date | Next Calibration Date |
| SAM Phantom | MVG | SN-20/09-SAM71 | Validated. No cal required. | Validated. No cal required. |
| COMOSAR Test Bench | Version 3 | NA | Validated. No cal required. | Validated. No cal required. |
| Network Analyzer | Rhode & Schwarz ZVA | SN100132 | 02/2013 | 02/2016 |
| Calipers | Carrera | CALIPER-01 | 12/2013 | 12/2016 |
| Reference Probe | MVG | EPG122 SN 18/11 | 10/2014 | 10/2015 |
| Multimeter | Keithley 2000 | 1188656 | 12/2013 | 12/2016 |
| Signal Generator | Agilent E4438C | MY49070581 | 12/2013 | 12/2016 |
| Amplifier | Aethercomm | SN 046 | Characterized prior to test. No cal required. | Characterized prior to test. No cal required. |
| Power Meter | HP E4418A | US38261498 | 12/2013 | 12/2016 |
| Power Sensor | HP ECP-E26A | US37181460 | 12/2013 | 12/2016 |
| Directional Coupler | Narda 4216-20 | 01386 | Characterized prior to test. No cal required. | Characterized prior to test. No cal required. |
| Temperature and Humidity Sensor | Control Company | 11-661-9 | 8/2012 | 8/2015 |



SAR Reference Waveguide Calibration Report

Ref : ACR.139.11.15.SATU.A

NTEK TESTING TECHNOLOGY CO., LTD.
BUILDING E, FENDA SCIENCE PARK, SANWEI
COMMUNITY, XIXIANG STREET,
BAO'AN DISTRICT, SHENZHEN GUANGDONG, CHINA
MVG COMOSAR REFERENCE WAVEGUIDE
FREQUENCY: 5000-6000 MHZ
SERIAL NO.: SN 13/14 WGA 33

Calibrated at MVG US
2105 Barrett Park Dr. - Kennesaw, GA 30144



04/06/2015

Summary:

This document presents the method and results from an accredited SAR reference waveguide calibration performed in MVG USA using the COMOSAR test bench. All calibration results are traceable to national metrology institutions.



SAR REFERENCE WAVEGUIDE CALIBRATION REPORT

Ref. ACR.139.11.15.SATU.A

| | <i>Name</i> | <i>Function</i> | <i>Date</i> | <i>Signature</i> |
|----------------------|---------------|-----------------|-------------|----------------------|
| <i>Prepared by :</i> | Jérôme LUC | Product Manager | 5/19/2015 | <i>JL</i> |
| <i>Checked by :</i> | Jérôme LUC | Product Manager | 5/19/2015 | <i>JL</i> |
| <i>Approved by :</i> | Kim RUTKOWSKI | Quality Manager | 5/19/2015 | <i>Kim Rutkowski</i> |

| | <i>Customer Name</i> |
|-----------------------|-----------------------------------|
| <i>Distribution :</i> | NTEK TESTING TECHNOLOGY CO., LTD. |

| <i>Issue</i> | <i>Date</i> | <i>Modifications</i> |
|--------------|-------------|----------------------|
| A | 5/19/2015 | Initial release |
| | | |
| | | |



TABLE OF CONTENTS

1 Introduction 4

2 Device Under Test 4

3 Product Description 4

 3.1 General Information 4

4 Measurement Method 4

 4.1 Return Loss Requirements 4

 4.2 Mechanical Requirements 4

5 Measurement Uncertainty 5

 5.1 Return Loss 5

 5.2 Dimension Measurement 5

 5.3 Validation Measurement 5

6 Calibration Measurement Results 5

 6.1 Return Loss 5

 6.2 Mechanical Dimensions 6

7 Validation measurement 7

 7.1 Head Liquid Measurement 7

 7.2 Measurement Result 7

 7.3 Body Measurement Result 10

8 List of Equipment 13



1 INTRODUCTION

This document contains a summary of the requirements set forth by the IEEE 1528 and CEI/IEC 62209 standards for reference waveguides used for SAR measurement system validations and the measurements that were performed to verify that the product complies with the fore mentioned standards.

2 DEVICE UNDER TEST

| Device Under Test | |
|--------------------------------|---|
| Device Type | COMOSAR 5000-6000 MHz REFERENCE WAVEGUIDE |
| Manufacturer | MVG |
| Model | SWG5500 |
| Serial Number | SN 13/14 WGA 33 |
| Product Condition (new / used) | New |

A yearly calibration interval is recommended.

3 PRODUCT DESCRIPTION

3.1 GENERAL INFORMATION

MVG’s COMOSAR Validation Waveguides are built in accordance to the IEEE 1528 and CEI/IEC 62209 standards.

4 MEASUREMENT METHOD

The IEEE 1528 and CEI/IEC 62209 standards provide requirements for reference waveguides used for system validation measurements. The following measurements were performed to verify that the product complies with the fore mentioned standards.

4.1 RETURN LOSS REQUIREMENTS

The waveguide used for SAR system validation measurements and checks must have a return loss of -8 dB or better. The return loss measurement shall be performed with matching layer placed in the open end of the waveguide, with the waveguide and matching layer in direct contact with the phantom shell as outlined in the fore mentioned standards.

4.2 MECHANICAL REQUIREMENTS

The IEEE 1528 and CEI/IEC 62209 standards specify the mechanical dimensions of the validation waveguide, the specified dimensions are as shown in Section 6.2. Figure 1 shows how the dimensions relate to the physical construction of the waveguide.



5 MEASUREMENT UNCERTAINTY

All uncertainties listed below represent an expanded uncertainty expressed at approximately the 95% confidence level using a coverage factor of k=2, traceable to the Internationally Accepted Guides to Measurement Uncertainty.

5.1 RETURN LOSS

The following uncertainties apply to the return loss measurement:

| Frequency band | Expanded Uncertainty on Return Loss |
|----------------|-------------------------------------|
| 400-6000MHz | 0.1 dB |

5.2 DIMENSION MEASUREMENT

The following uncertainties apply to the dimension measurements:

| Length (mm) | Expanded Uncertainty on Length |
|-------------|--------------------------------|
| 3 - 300 | 0.05 mm |

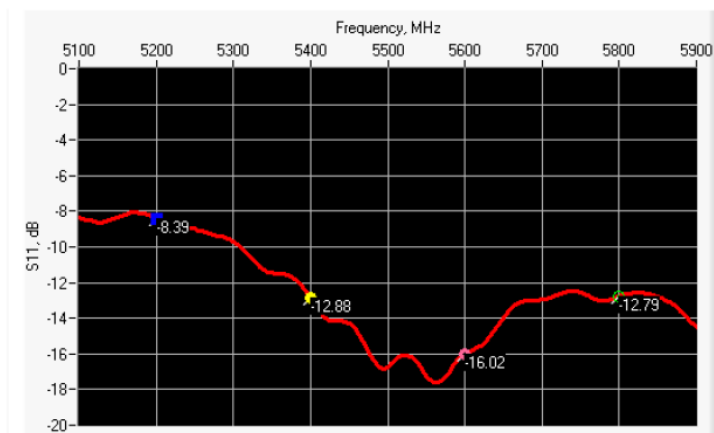
5.3 VALIDATION MEASUREMENT

The guidelines outlined in the IEEE 1528 and CEI/IEC 62209 standards were followed to generate the measurement uncertainty for validation measurements.

| Scan Volume | Expanded Uncertainty |
|-------------|----------------------|
| 1 g | 20.3 % |
| 10 g | 20.1 % |

6 CALIBRATION MEASUREMENT RESULTS

6.1 RETURN LOSS IN HEAD LIQUID



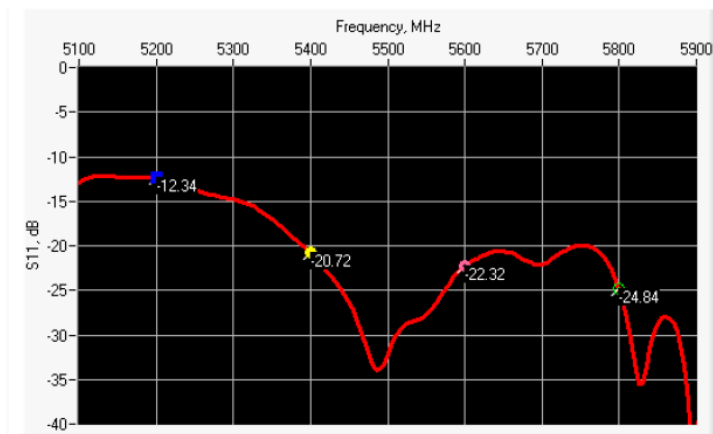


SAR REFERENCE WAVEGUIDE CALIBRATION REPORT

Ref: ACR.139.11.15.SATU.A

| Frequency (MHz) | Return Loss (dB) | Requirement (dB) | Impedance |
|-----------------|------------------|------------------|-----------------------------------|
| 5200 | -8.39 | -8 | 19.30 Ω + 15.12 j Ω |
| 5400 | -12.88 | -8 | 70.60 Ω + 6.57 j Ω |
| 5600 | -16.02 | -8 | 34.64 Ω - 1.46 j Ω |
| 5800 | -12.79 | -8 | 55.89 Ω + 21.44 j Ω |

6.2 RETURN LOSS IN BODY LIQUID



| Frequency (MHz) | Return Loss (dB) | Requirement (dB) | Impedance |
|-----------------|------------------|------------------|----------------------------------|
| 5200 | -12.34 | -8 | 28.10 Ω + 6.80 j Ω |
| 5400 | -20.72 | -8 | 54.65 Ω + 7.88 j Ω |
| 5600 | -22.32 | -8 | 45.52 Ω + 6.18 j Ω |
| 5800 | -24.84 | -8 | 53.64 Ω + 4.41 j Ω |

6.3 MECHANICAL DIMENSIONS

| Frequency (MHz) | L (mm) | | W (mm) | | L _f (mm) | | W _f (mm) | | T (mm) | |
|-----------------|--------------|-----------|--------------|-----------|---------------------|-----------|---------------------|-----------|-----------|-----------|
| | Require d | Measure d | Require d | Measure d | Require d | Measure d | Require d | Measure d | Require d | Measure d |
| 5200 | 40.39 ± 0.13 | PASS | 20.19 ± 0.13 | PASS | 81.03 ± 0.13 | PASS | 61.98 ± 0.13 | PASS | 5.3* | PASS |
| 5800 | 40.39 ± 0.13 | PASS | 20.19 ± 0.13 | PASS | 81.03 ± 0.13 | PASS | 61.98 ± 0.13 | PASS | 4.3* | PASS |

* The tolerance for the matching layer is included in the return loss measurement.

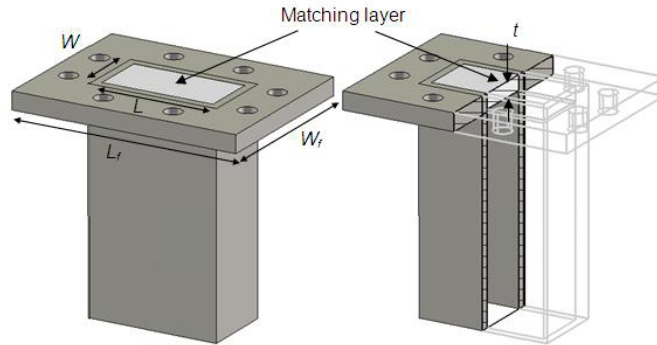


Figure 1: Validation Waveguide Dimensions

7 VALIDATION MEASUREMENT

The IEEE Std. 1528 and CEI/IEC 62209 standards state that the system validation measurements must be performed using a reference waveguide meeting the fore mentioned return loss and mechanical dimension requirements. The validation measurement must be performed with the matching layer placed in the open end of the waveguide, with the waveguide and matching layer in direct contact with the phantom shell.

7.1 HEAD LIQUID MEASUREMENT

| Frequency MHz | Relative permittivity (ϵ_r') | | Conductivity (σ) S/m | |
|------------------|---|----------|-------------------------------|----------|
| | required | measured | required | measured |
| 5000 | 36.2 ±10 % | | 4.45 ±10 % | |
| 5100 | 36.1 ±10 % | | 4.56 ±10 % | |
| 5200 | 36.0 ±10 % | PASS | 4.66 ±10 % | PASS |
| 5300 | 35.9 ±10 % | | 4.76 ±10 % | |
| 5400 | 35.8 ±10 % | PASS | 4.86 ±10 % | PASS |
| 5500 | 35.6 ±10 % | | 4.97 ±10 % | |
| 5600 | 35.5 ±10 % | PASS | 5.07 ±10 % | PASS |
| 5700 | 35.4 ±10 % | | 5.17 ±10 % | |
| 5800 | 35.3 ±10 % | PASS | 5.27 ±10 % | PASS |
| 5900 | 35.2 ±10 % | | 5.38 ±10 % | |
| 6000 | 35.1 ±10 % | | 5.48 ±10 % | |

7.2 SAR MEASUREMENT RESULT WITH HEAD LIQUID

At those frequencies, the target SAR value can not be generic. Hereunder is the target SAR value defined by MVG, within the uncertainty for the system validation. All SAR values are normalized to 1 W net power. In bracket, the measured SAR is given with the used input power.



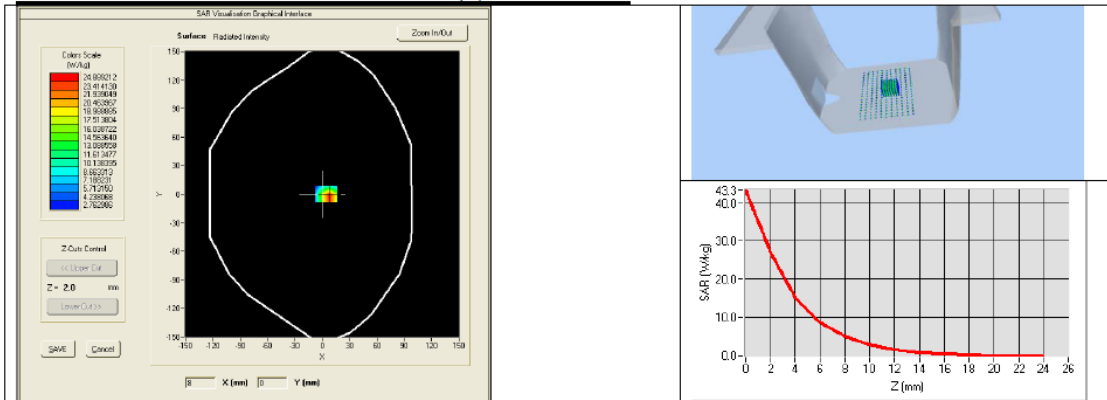
SAR REFERENCE WAVEGUIDE CALIBRATION REPORT

Ref: ACR.139.11.15.SATU.A

| | |
|--|--|
| Software | OPENSAR V4 |
| Phantom | SN 20/09 SAM71 |
| Probe | SN 18/11 EPG122 |
| Liquid | Head Liquid Values 5200 MHz: eps' :36.44 sigma : 4.79 Head Liquid Values 5400 MHz: eps' :35.99 sigma : 4.91 Head Liquid Values 5600 MHz: eps' :35.22 sigma : 5.18 Head Liquid Values 5800 MHz: eps' :34.95 sigma : 5.42 |
| Distance between dipole waveguide and liquid | 0 mm |
| Area scan resolution | dx=8mm/dy=8mm |
| Zoon Scan Resolution | dx=4mm/dy=4m/dz=2mm |
| Frequency | 5200 MHz 5400 MHz 5600 MHz 5800 MHz |
| Input power | 20 dBm |
| Liquid Temperature | 21 °C |
| Lab Temperature | 21 °C |
| Lab Humidity | 45 % |

| Frequency (MHz) | 1 g SAR (W/kg) | | 10 g SAR (W/kg) | |
|-----------------|----------------|----------------|-----------------|--------------|
| | required | measured | required | measured |
| 5200 | 159.00 | 155.40 (15.54) | 56.90 | 54.22 (5.42) |
| 5400 | 166.40 | 161.85 (16.18) | 58.43 | 55.86 (5.59) |
| 5600 | 173.80 | 170.22 (17.02) | 59.97 | 58.11 (5.81) |
| 5800 | 181.20 | 178.96 (17.90) | 61.50 | 60.45 (6.05) |

SAR MEASUREMENT PLOTS @ 5200 MHz

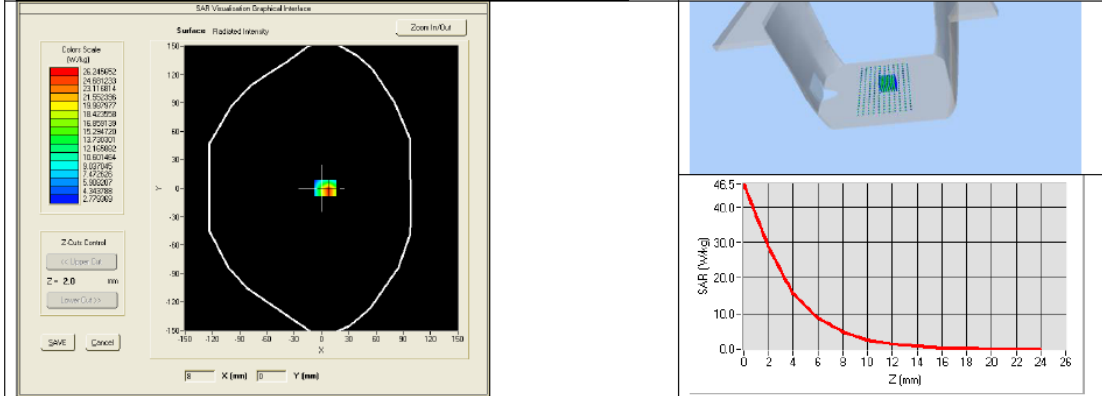




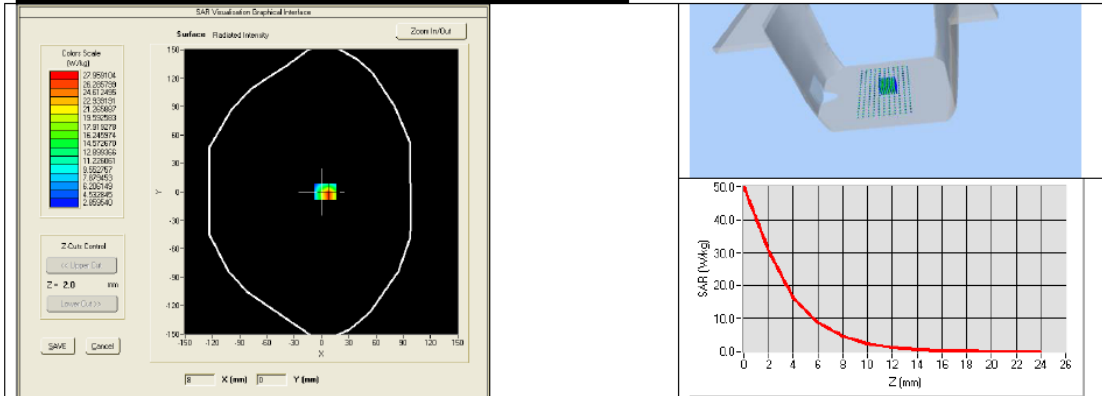
SAR REFERENCE WAVEGUIDE CALIBRATION REPORT

Ref. ACR.139.11.15.SATU.A

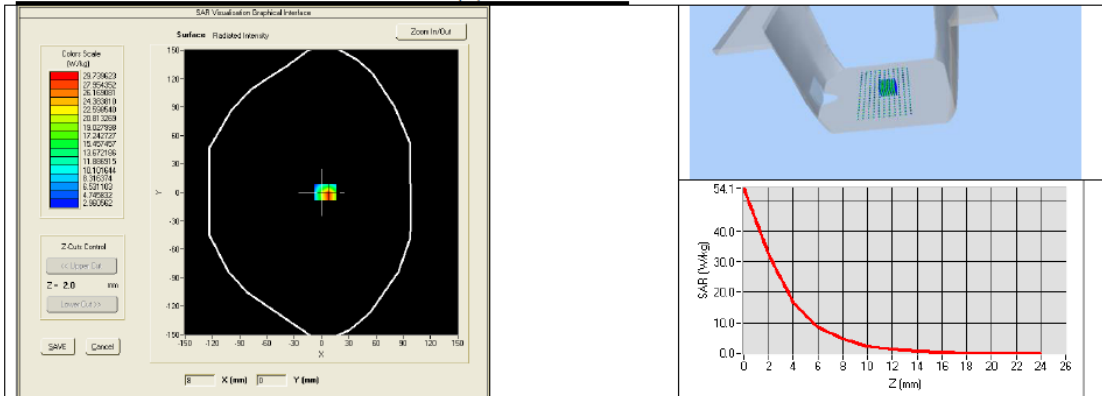
SAR MEASUREMENT PLOTS @ 5400 MHz



SAR MEASUREMENT PLOTS @ 5600 MHz



SAR MEASUREMENT PLOTS @ 5800 MHz





SAR REFERENCE WAVEGUIDE CALIBRATION REPORT

Ref: ACR.139.11.15.SATU.A

7.3 BODY LIQUID MEASUREMENT

| Frequency MHz | Relative permittivity (ϵ_r') | | Conductivity (σ) S/m | |
|---------------|---|----------|-------------------------------|----------|
| | required | measured | required | measured |
| 5200 | 49.0 \pm 10 % | PASS | 5.30 \pm 10 % | PASS |
| 5300 | 48.9 \pm 10 % | | 5.42 \pm 10 % | |
| 5400 | 48.7 \pm 10 % | PASS | 5.53 \pm 10 % | PASS |
| 5500 | 48.6 \pm 10 % | | 5.65 \pm 10 % | |
| 5600 | 48.5 \pm 10 % | PASS | 5.77 \pm 10 % | PASS |
| 5800 | 48.2 \pm 10 % | PASS | 6.00 \pm 10 % | PASS |

7.4 SAR MEASUREMENT RESULT WITH BODY LIQUID

| | |
|--|--|
| Software | OPENSAR V4 |
| Phantom | SN 20/09 SAM71 |
| Probe | SN 18/11 EPG122 |
| Liquid | Body Liquid Values 5200 MHz: ϵ_r' :50.70 sigma : 5.11 Body Liquid Values 5400 MHz: ϵ_r' :50.01 sigma : 5.64 Body Liquid Values 5600 MHz: ϵ_r' :49.34 sigma : 5.85 Body Liquid Values 5800 MHz: ϵ_r' :48.54 sigma : 6.22 |
| Distance between dipole waveguide and liquid | 0 mm |
| Area scan resolution | dx=8mm/dy=8mm |
| Zoon Scan Resolution | dx=4mm/dy=4m/dz=2mm |
| Frequency | 5200 MHz 5400 MHz 5600 MHz 5800 MHz |
| Input power | 20 dBm |
| Liquid Temperature | 21 °C |
| Lab Temperature | 21 °C |
| Lab Humidity | 45 % |

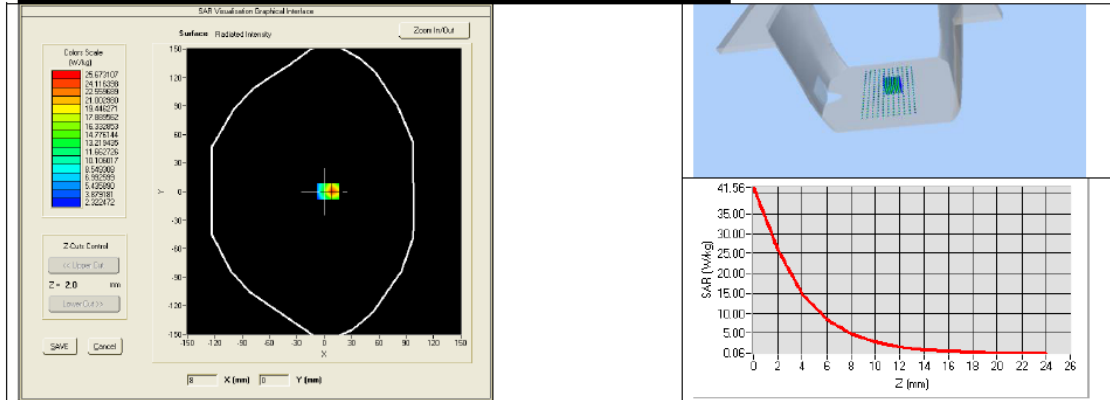
| Frequency (MHz) | 1 g SAR (W/kg) measured | 10 g SAR (W/kg) measured |
|-----------------|----------------------------|-----------------------------|
| 5200 | 150.06 (15.01) | 53.20 (5.32) |
| 5400 | 160.86 (16.09) | 56.15 (5.61) |
| 5600 | 165.84 (16.58) | 57.05 (5.70) |
| 5800 | 173.64 (17.36) | 59.29 (5.93) |



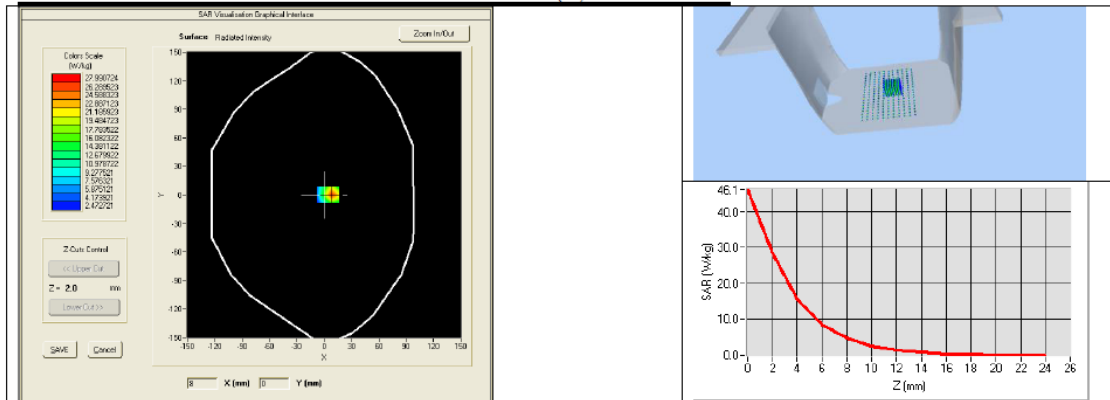
SAR REFERENCE WAVEGUIDE CALIBRATION REPORT

Ref: ACR.139.11.15.SATU.A

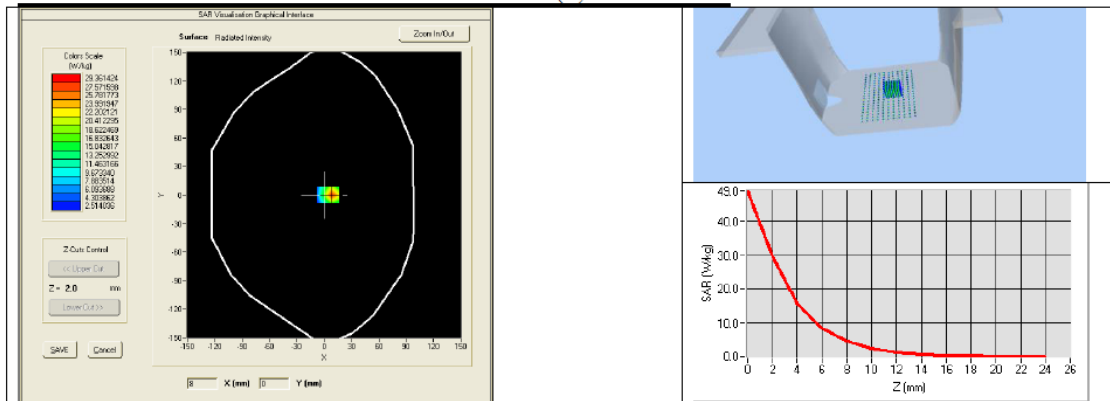
BODY SAR MEASUREMENT PLOTS @ 5200 MHz



BODY SAR MEASUREMENT PLOTS @ 5400 MHz



BODY SAR MEASUREMENT PLOTS @ 5600 MHz

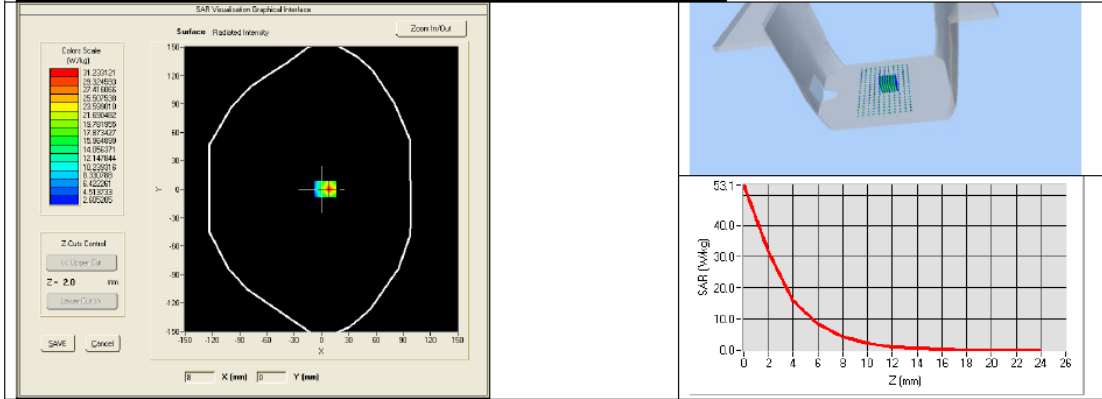




SAR REFERENCE WAVEGUIDE CALIBRATION REPORT

Ref. ACR.139.11.15.SATU.A

BODY SAR MEASUREMENT PLOTS @ 5800 MHz





8 LIST OF EQUIPMENT

| Equipment Summary Sheet | | | | |
|---------------------------------|----------------------|--------------------|---|---|
| Equipment Description | Manufacturer / Model | Identification No. | Current Calibration Date | Next Calibration Date |
| Flat Phantom | MVG | SN-20/09-SAM71 | Validated. No cal required. | Validated. No cal required. |
| COMOSAR Test Bench | Version 3 | NA | Validated. No cal required. | Validated. No cal required. |
| Network Analyzer | Rhode & Schwarz ZVA | SN100132 | 02/2013 | 02/2016 |
| Calipers | Carrera | CALIPER-01 | 12/2013 | 12/2016 |
| Reference Probe | MVG | EPG122 SN 18/11 | 10/2014 | 10/2015 |
| Multimeter | Keithley 2000 | 1188656 | 12/2013 | 12/2016 |
| Signal Generator | Agilent E4438C | MY49070581 | 12/2013 | 12/2016 |
| Amplifier | Aethercomm | SN 046 | Characterized prior to test. No cal required. | Characterized prior to test. No cal required. |
| Power Meter | HP E4418A | US38261498 | 12/2013 | 12/2016 |
| Power Sensor | HP ECP-E26A | US37181460 | 12/2013 | 12/2016 |
| Directional Coupler | Narda 4216-20 | 01386 | Characterized prior to test. No cal required. | Characterized prior to test. No cal required. |
| Temperature and Humidity Sensor | Control Company | 11-661-9 | 8/2012 | 8/2015 |

<Justification of the extended calibration>

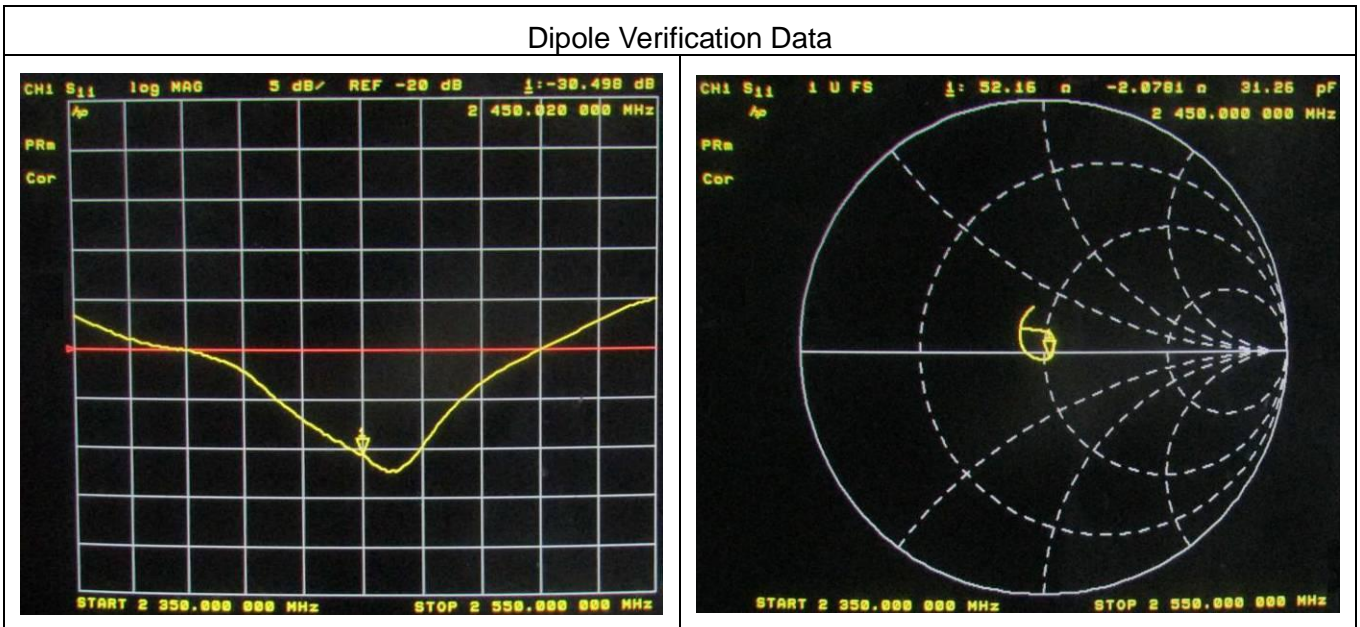
If dipoles are verified in return loss(<-20dB, within 20% of prior calibration for below 3GHz, and <-8dB, within 20% of prior calibration for 5GHz to 6GHz),and in impedance (within 5 ohm of prior calibration), the annual calibration is not necessary and the calibration interval can be extended.

<Body 2450MHz>

| Return Loss (dB) | Delta (%) | Impedance | Delta(ohm) | Date of Measurement |
|------------------|-----------|-----------|------------|---------------------|
| -30.51 | - | 52.2 | - | Apr. 06, 2015 |
| -30.498 | 0.039 | 52.16 | 0.04 | Apr. 05, 2016 |

The return loss is <-20dB, within 20% of prior calibration; the impedance is within 5 ohm of prior calibration. Therefore the verification result should support extended calibration.

Dipole Verification Data

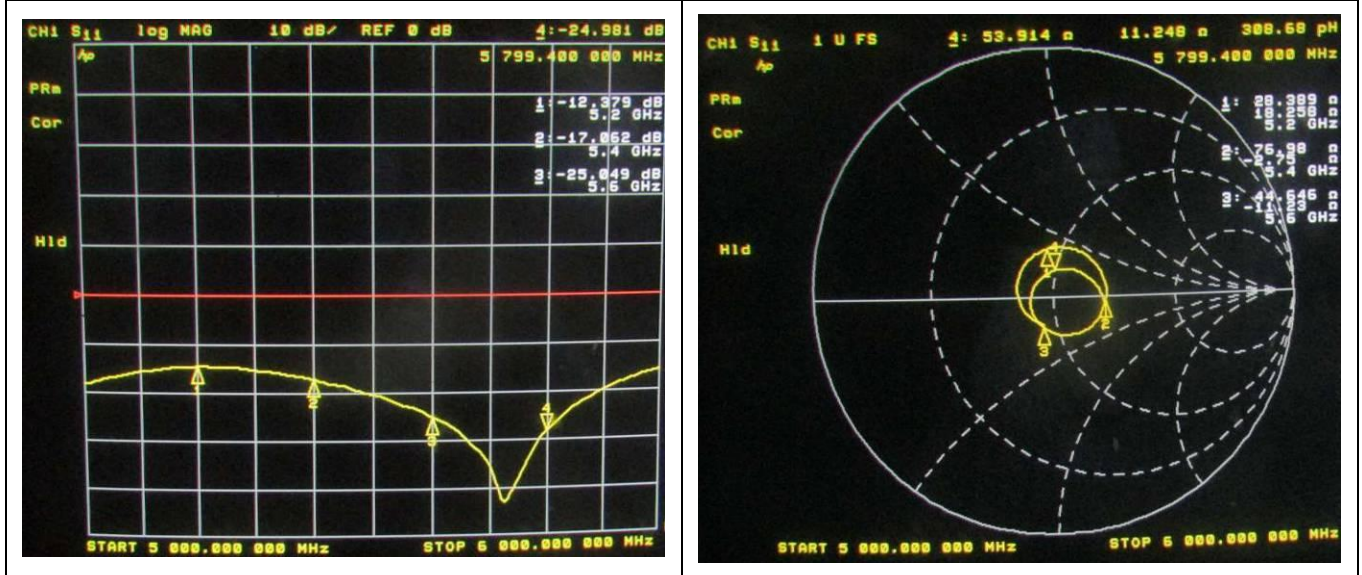


<Body 5200MHz>

| Return Loss (dB) | Delta (%) | Impedance | Delta(ohm) | Date of Measurement |
|------------------|-----------|-----------|------------|---------------------|
| -12.34 | - | 28.1 | - | Apr. 06, 2015 |
| -12.379 | 0.316 | 28.389 | 0.289 | Apr. 05, 2016 |

The return loss is <-8dB, within 20% of prior calibration; the impedance is within 5 ohm of prior calibration. Therefore the verification result should support extended calibration.

Dipole Verification Data

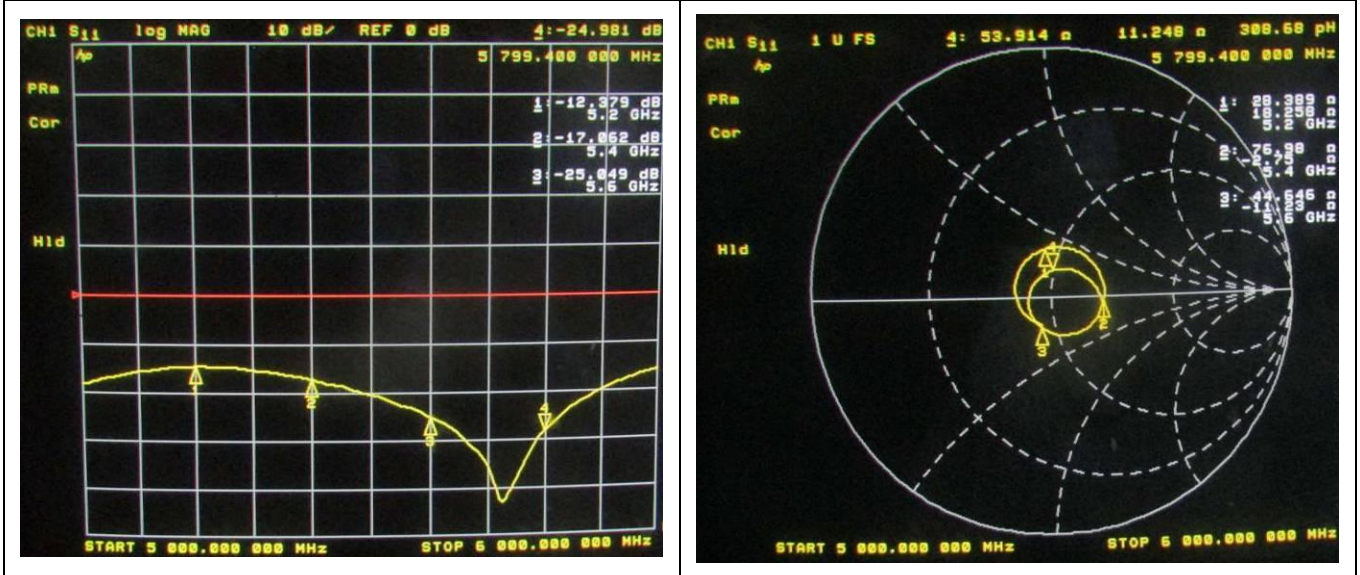


<Body 5800MHz>

| Return Loss (dB) | Delta (%) | Impedance | Delta(ohm) | Date of Measurement |
|------------------|-----------|-----------|------------|---------------------|
| -24.84 | - | 53.64 | - | Apr. 06, 2015 |
| -24.981 | 0.568 | 53.914 | 0.274 | Apr. 05, 2016 |

The return loss is <-8dB, within 20% of prior calibration; the impedance is within 5 ohm of prior calibration. Therefore the verification result should support extended calibration.

Dipole Verification Data



END