

# NEXT Hub



## User Manual

Note: All pictures in this manual are for reference only, please refer to the actual product.

### ● Safety Warning and Precautions

Before using this device, please read this manual thoroughly and know the following precautions in order to optimize the use and lifespan of the device.

#### 1. Operating Environment

Do not place the product in dusty and humid environments. This could cause an internal short circuit. Do not place the product near heating devices (such as electrical heaters). The operating temperature is 0-40°C or 32-104°F. The operating humidity is 10%-90%RH.

#### 2. Safety for young children

The product and its accessories may contain small parts. Please keep these items out of the reach of young children because it can cause a choking hazard.

#### 3. Power Supply

Please use the included, standard power adapter.

#### 4. Keep Dry

The product is NOT waterproof or water resistant. Please keep it dry.

#### 5. Maintenance

Please contact technical support for maintenance services. The U.S. Support Team can be reached at 866-642-5645, or chat or a support ticket can be submitted from our website: [www.getclearontouch.com](http://www.getclearontouch.com)

Do not insert any sharp or pointed object into the device.

Treat the device carefully to avoid rough impact with a surface that could cause permanent damage to the device.

### ● Statement

1. Intellectual property right statement: Patent Pending. The patents cover the hardware design and software of this product. Anyone who reproduces the product or the contents of this manual without prior written permission from Clear Touch shall be liable to legal prosecutions.

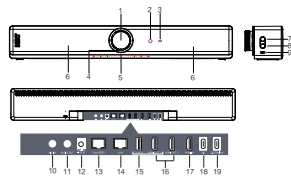
2. The description, illustrations, etc. in this document are subject to change per the latest product specification and performance.

3. The product images are for illustrative purposes only and may differ in appearance, color, size, etc. from the actual product.

4. Clear Touch reserves the rights to improve and change the appearance and design of the product without notice.

### ● Product Function

The list below provides an overview of the hardware, I/O, and functions on the device.



No.	Items	No.	Items
1	Camera with built-in selfies cover	10	MIC IN
2	Remote control (receiver signal)	11	AUDIO OUT
3	Power LED: No light: power off White: working during boot-up White: power on Blue: working BT standby Red: microphone muted	12	3.5mm DC 2.0
4	Camera LEDs, white: on/off	13	LAN (PS/2) Connected to Ethernet, Support for WPA2
5	Microphone	14	LAM Connected to Ethernet
6	Levelfeeder	15	TOUCH Support touch-retransmission
7	Q Power button: Press and hold 3s to turn off device	16	HDMI OUT 1.4/2
8	Bluetooth button: Press to turn on BT; Press and hold for 5s to enter BT pairing mode	17	HDMI IN
9	3.0 USB Type-A, video & audio transmit	18	3.0 USB Type-C, video & audio transmit
		19	3.0 Device Support display (micro-USB & audio transmit) / touch / network (no charging provided)

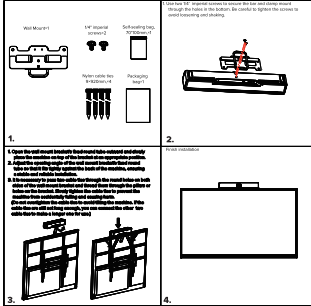
### ● Mounting

Placed directly on a flat surface.

TV mount (V-Mount): Secure the bars to the VESA mounts of the I/P and attach the NEXT to the mount with hand-tightened screws. They can be put above the screen or below the screen. For detailed instructions, refer to this guide: <http://myurl.com/NEXT-Mount>

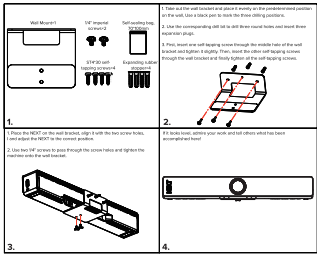


Clamp mount: Fix the NEXT onto the clamp mount using hand-tightened screws, then hang the clamp mount at the middle top position of the I/P. To further secure the Clamp, use the included zip-ties to mount the clamp to the VESA brackets or mount of the mobile stand. This mount can only be used to mount the NEXT to the top of the display.



**Safety warning:** When using the Clamp mount, be sure to use nylon cable ties. Thread them through the safety holes of the clamp mount and tie them to the mounting hole of the bracket (or the VESA) (not of the I/P). This will keep the NEXT from falling off the top of the I/P.

Wall Mount: Please follow these steps for installation.



The terms HDMI, HDMI High-Definition Multimedia Interface, HDMI trade dress and the HDMI Logo are trademarks or registered trademarks of HDMI Licensing Administrator, Inc.

This symbol, affixed to the product or its packaging, indicates that the radio must not be processed with household waste. It must be brought to an electric and electronic waste collection point for recycling and disposal. By the appropriate disposal of the product you also help in preventing potentially negative consequences for the environment and human health. The recycling of materials helps preserve our natural resources. For further information regarding the recycling of this product, please contact your municipality, local waste disposal centre or the store where the product was purchased.



NUITEQ ClearTouch

**WARNING**

- INGESTION HAZARD:** This product contains a button cell or coin battery
- DEATH or serious injury** can occur if ingested
- A swallowed button cell or coin battery can cause Internal Chemical Burns in as little as 2 hours**
- KEEP** new and used batteries **OUT OF REACH OF CHILDREN**
- Seek immediate medical attention** if a battery is suspected to be swallowed or inserted inside any part of the body.

Product contains non-replaceable batteries: CR1220, 3V.  
Remove and immediately recycle or dispose of used batteries according to local regulations and keep away from children. Do NOT dispose of batteries in household trash or incinerate.  
Even used batteries may cause severe injury or death.  
Call a local poison control center for treatment information.  
Non-rechargeable batteries are not to be recharged.  
Do not force discharge, recharge, disassemble, heat above (manufacturer's specified temperature rating) or incinerate.  
Dropping or may result in injury due to venting, leakage or explosion resulting in chemical burns.  
The battery is not to be replaced by the consumer

Hereby, Clear Touch Interactive declares that the radio equipment type NEXT Hub, regulatory model: CT-NEXT-T002-010000 Directive 2014/53/EU. The full text of the EU declaration of conformity is available at the following internet address: [www.getclearontouch.com](http://www.getclearontouch.com)  
The frequency band and the maximum transmitted power are:

- 2402 MHz-2480 MHz: 4.69 dBm (ERP)
  - 2412 MHz-2472 MHz: 19.01 dBm (ERP)
  - 5150 MHz - 5350 MHz: 19.85 dBm (ERP)
  - 5470 MHz - 5725 MHz: 19.05 dBm (ERP)
  - 5725 MHz - 5825 MHz: 13.31 dBm (ERP)
  - 5925 MHz - 6425 MHz: 14.43 dBm (ERP)
- Caution: Exposure to Radio Frequency Radiation. This equipment complies with EU radiation exposure limits set forth for an uncontrolled environment. This equipment should be installed and operated with minimum distance 20 cm between the radiator and your body.

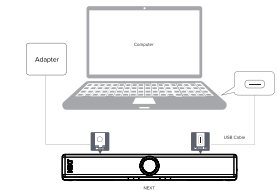


Restrictions: 5150 MHz - 5350 MHz and 5925 MHz - 6425 MHz are for indoor use only.

● How to Connect

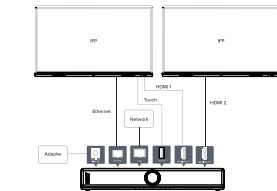
1. NEXT & laptop

Plug and play, all-in-one device which provides excellent audio and video capabilities.



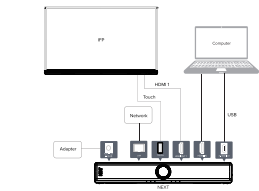
2. IFP & NEXT

Connect NEXT and IFP to provide the latest Android 12 system; simultaneously support dual-screen display and network transmission.



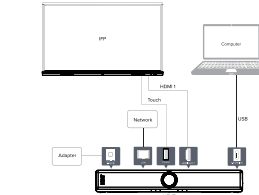
3. IFP, NEXT, and laptop (HDMI & USB)

Connect a computer with an HDMI cable and a USB A to C cable to transmit display, audio, and video to IFP, and achieve multiple points of touch.



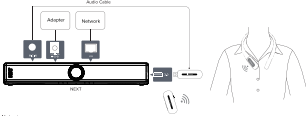
4. IFP, NEXT, and laptop (USB-C)

Connect a computer with a USB Type-C cable to transmit display, audio, and video to an IFP and achieve points of touch.



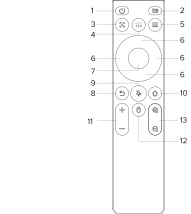
5. NEXT and Collar Mic

Pair with a collar microphone to achieve voice amplification



Notes:  
Please confirm that the pairing is completed.  
The supplied power adapter is suitable for use with 100-240V AC power only.  
Be conscious of the power load when you use extension cords or multiple outlet surge protectors.  
The illustration is for your reference only.

● Remote Control



1. : Power Button  
- Short press: external display device will show 10s countdown shutdown, click OK to shut down, click cancel to cancel the current operation.  
- Press and hold for 3s to enter the shutdown state.
2. : Camera Switch, enable or disable the camera.

3. : Switch the camera mode. The default is panoramic mode. Press to switch to Auto-Framing, and press again to switch to speaker tracking.

4. : Presets

Short press cycle to switch the preset function (mode 1, mode 2, mode 3). If Autoframing is on when pressed, Autoframing will be automatically cancelled in response to preset bit switching.  
Hold down to set the preset mode. Default: can be adjusted freely, but cannot be saved. To switch to any mode, hold down to save it in the corresponding mode.

5. : Menu Button, open the menu function. It contains application switch, recently used application, task clearing and other functions can be operated.

6. Direction Button

7. OK Button:  
- Navigation keys;  
- Control the top, bottom, left and right of the camera.

8. : Return Button

- Return to previous page;  
- With the home button, long press 3s to achieve Bluetooth pairing.

9. : Turn on/off the microphone

10. : Home Button

- Return to the home page;  
- With the return button, long press 3s to achieve Bluetooth pairing.

11. : Volume Button

- Adjust system volume  
- Hold down the OK button and then press volume+/- for volume+/- to adjust the wireless mouse sensitivity.

12. : Wireless mouse, turn on/off the wireless mouse

13. : Digital Zooming, digital camera focus, zoom in or zoom out the picture can use the direction button to move the picture perspective. Mutually exclusive with Autoframing.

● Accessories Introduction

Please check the following items in the product box.

HDMI Cable × 2	Audio Cable × 2	AC Cable × 3	USB plug×1
USB (C)Cable × 1	Ethernet Cable × 1	Clamp Mount × 1	
USB (A/C) Cable × 2	Cable Management × 4	TV Mount × 1	
USB (A/B/Cable) × 1	Remote Control × 1	Wall Mount × 1	

FCC Statement:

This device complies with Part 15 of the FCC Rules. Operation is subject to the following two conditions:  
(1) This device may not cause harmful interference, and  
(2) this device must accept any interference received, including interference that may cause undesired operation. This equipment has been tested and found to comply with the limits for a Class B digital device, pursuant to Part 15 of the FCC Rules. These limits are designed to provide reasonable protection against harmful interference in a residential installation. This equipment generates, uses and can radiate radio frequency energy and, if not installed and used in accordance with the instructions, may cause harmful interference to radio communications.  
However, there is no guarantee that interference will not occur in a particular installation. If this equipment does cause harmful interference to radio or television reception, which can be determined by turning the equipment off and on, the user is encouraged to try to correct the interference by one of the following measures:  
Reorient or relocate the receiving antenna.  
Increase the separation between the equipment and receiver.  
Connect the equipment into an outlet on a circuit different from that to which the receiver is connected.  
Consult the dealer or an experienced radio/TV technician for help.

FCC Caution: Any changes or modifications not expressly approved by the party responsible for compliance could void the user's authority to operate the equipment. This transmitter must not be co-located or operating in conjunction with any other antenna or transmitter.

RF exposure considerations

This equipment complies with FCC radiation exposure limits set forth for an uncontrolled environment. This equipment should be installed and operated with minimum distance 20cm between the radiator & your body.

Operations in the 60GHz bands:

- 1)60GHz bands are restricted to indoor locations only.
- 2)Operation of transmitters in the 5825-7125 GHz band is prohibited for control of or communications with unlicensed aircraft systems.

FCC Supplier's Declaration of Conformity

Unique Identifier(Model Name): NEXT H5A(NEXT-TXED-510)

Responsible Party: JJ'S Contact Information

Company Name: Clear Touch Interactive, Inc.

Company Address: 1100 Thousand Oaks Blvd, Greenville, SC 29607, United States

Contact information: Leo Gaudet Director of Product Development

O (864) 973-7871 M (864) 616-6781

FCC Compliance Statement

This device complies with Part 15 of the FCC Rules. Operation is subject to the following two conditions: (1) the device may not cause harmful interference, and (2) this device must accept any interference received, including interference that may cause undesired operation.

ISED Statement:

This device complies with Innovation, Science and Economic Development Canada's license-exempt RSS standard(s). Operation is subject to the following two conditions:  
1)This device may not cause interference, and  
2)This device must accept any interference, including interference that may cause undesired operation of the device.

Le présent appareil est conforme aux CNR d'Industrie Canada applicables aux appareils radio exempts de licence.

L'exploitation est autorisée aux deux conditions suivantes:

- 1)l'appareil ne doit pas produire de brouillage, et
- 2)l'utilisateur de l'appareil doit accepter tout brouillage radioélectrique subi, même si le brouillage est susceptible d'en compromettre le fonctionnement.

RF Radiation Exposure Statement

This equipment complies with ISED radiation exposure limits set forth for an uncontrolled environment. This equipment should be installed and operated with a minimum distance of 20 centimeters between the radiator and your body. Operation in the band 5105-5250 MHz is only for indoor use to reduce the potential for harmful interference to co-channel mobile satellite systems.  
Operation in the 60GHz bands:  
1)Operation in the band 5825-7125 MHz shall be limited to indoor use only.  
2)Devices shall not be used for control of or communications with unmanned aircraft systems.

Déclaration d'exposition aux radiations

Cet appareil est conforme aux limites d'exposition aux rayonnements définies pour un environnement non contrôlé. Cet équipement doit être installé et utilisé à une distance minimale de 20 centimètres entre le radiateur et votre corps. Le fonctionnement dans la bande 5105-5250 MHz est uniquement destiné à une utilisation en intérieur afin de réduire le potentiel d'interférences nuisibles aux systèmes mobiles par satellite dans le même canal.  
Opérations dans les bandes 6 GHz  
1)Bande 5825-7125 MHz: Utilisation limitée à l'intérieur seulement.  
2)L'appareil ne doit pas être utilisé pour le contrôle ou la communication avec des systèmes d'aéronefs sans pilote.

Cet appareil est conçu uniquement pour les intégrateurs OEM dans les conditions suivantes:

- Le module émetteur peut ne pas être conforme avec un autre émetteur ou antenne.
- Tout ce qui les 1 conditions ci-dessus sont exemptes, des essais expérimentaux sur l'antenne ne seront pas nécessaires. Toutefois, l'intégrateur OEM est toujours responsable des essais sur son produit final pour toutes exigences de conformité supplémentaires requies pour ce module installé.
- 1)Bande 5825-7125 MHz: Utilisation limitée à l'intérieur seulement.
- 2)L'appareil ne doit pas être utilisé pour le contrôle ou la communication avec des systèmes d'aéronefs sans pilote.

NEXT  
Hub