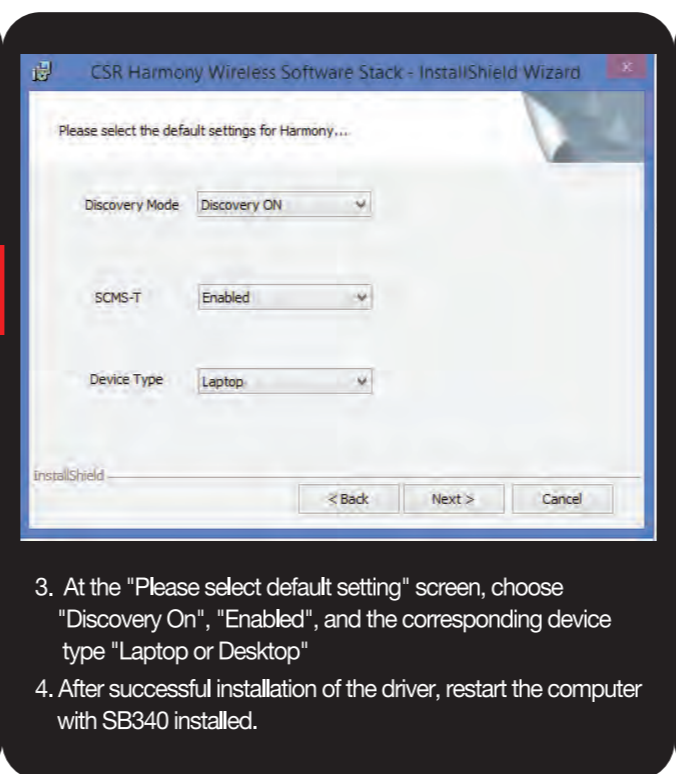
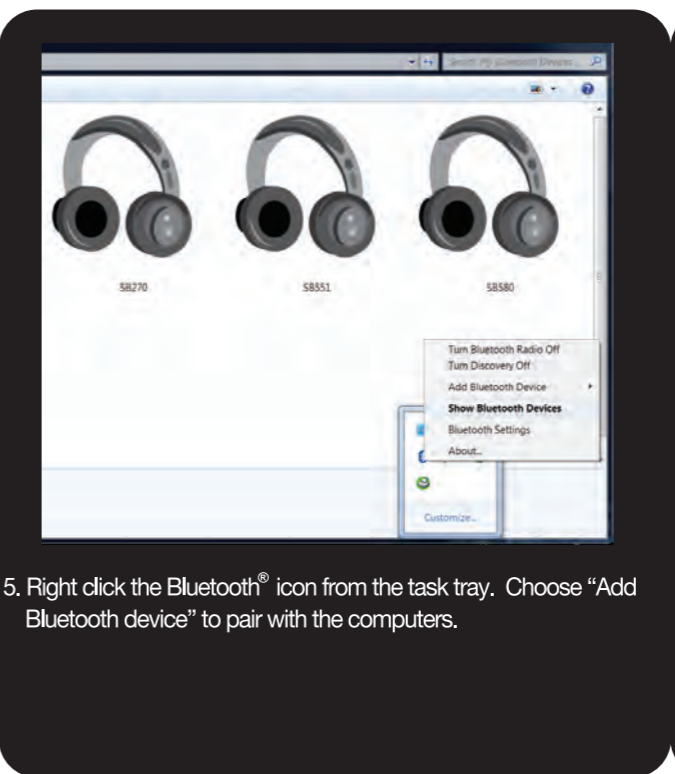


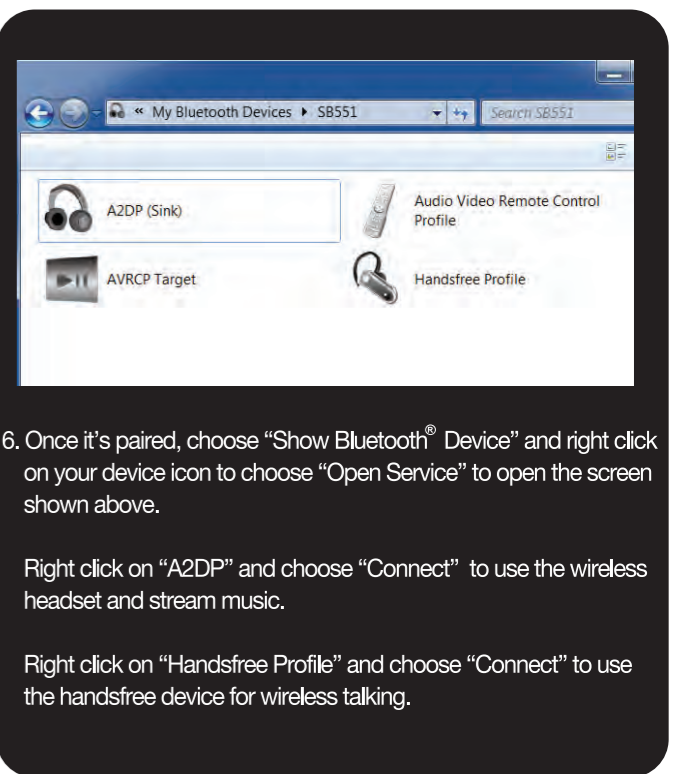
1. Install drivers from the cd or download from SoundBot.com official site
2. Run "Setup.exe" to install the "CSR Harmony Wireless Software Stack"



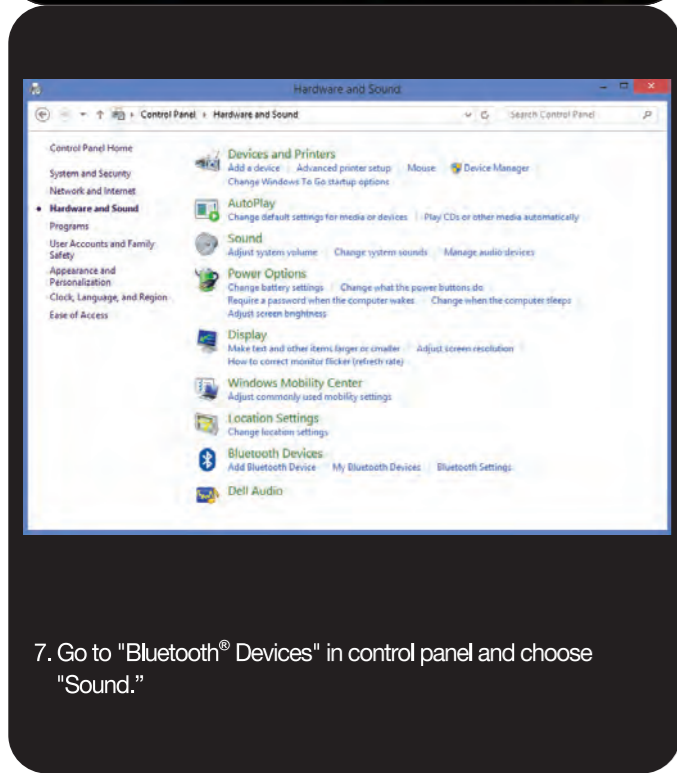
3. At the "Please select default setting" screen, choose "Discovery On", "Enabled", and the corresponding device type "Laptop or Desktop"
4. After successful installation of the driver, restart the computer with SB340 installed.



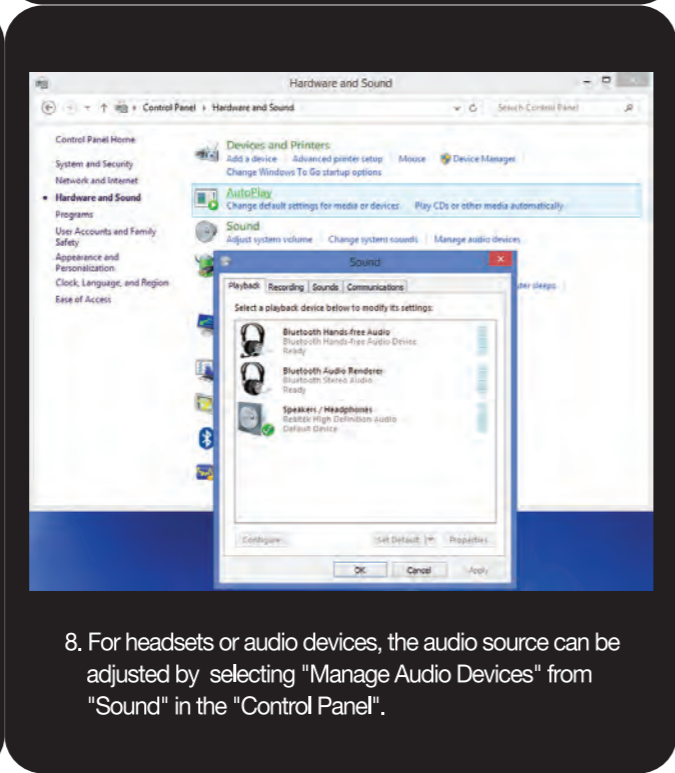
5. Right click the Bluetooth® icon from the task tray. Choose "Add Bluetooth device" to pair with the computers.



6. Once it's paired, choose "Show Bluetooth® Device" and right click on your device icon to choose "Open Service" to open the screen shown above.
- Right click on "A2DP" and choose "Connect" to use the wireless headset and stream music.
- Right click on "Handsfree Profile" and choose "Connect" to use the handsfree device for wireless talking.



7. Go to "Bluetooth® Devices" in control panel and choose "Sound."



8. For headsets or audio devices, the audio source can be adjusted by selecting "Manage Audio Devices" from "Sound" in the "Control Panel".



9. Choose the device intended for audio from the list and click on "Set Default" under "Playback" tab.
10. Choose the device intended for microphone from the list and click on "Set Default" under "Recording" tab.



11. If installation fails or compatibility issue presents, please visit and contact us on our site at [www.soundbot.com](http://www.soundbot.com)

## PACKAGE CONTENTS

- SB340 Bluetooth® USB Adapter
- User Guide
- 1 Installation CD

## SAFETY INSTRUCTIONS

Keep the unit away from heat sources, direct sunlight, humidity, water and any other liquids.

Do not operate the unit if it has been exposed to water, moisture or any other liquids to prevent against electric shock, explosion and/or injury to yourself and damage to the unit.

Do not use the unit if it has been dropped or damaged in any way.

Do not puncture or disassemble the exterior surface of the product in any way.

Keep the product out of reach of children.

**SB340**

# SoundBot®


## COMPATIBILITY & SPECIFICATIONS

- Supports all common Bluetooth® (wireless) peripherals - keyboards, mice, headsets, stereo headphones & others
- SB340 transforms any computer with a USB port to a Bluetooth® enabled computer
- Built with the latest Bluetooth® v4.0 Class 2 technology
- Backwards compatible with Bluetooth® versions 2.1/2.0/3.0
- Compatible with Windows 8.1/ Windows 8 / Windows 7/ Vista / XP & Mac OS

**NOTE:**

Many Windows computers may come with built-in Bluetooth® drivers. Driver installation provided in the user guide is intended for Windows machines without the correct drivers and NOT all of the windows machines work with bluetooth® features due to 3rd party driver conflicts. Contact customer service at [support@volcus.com](mailto:support@volcus.com) for further assistance as required.

[www.SoundBot.com](http://www.SoundBot.com)



All trade names are registered trademarks of respective manufacturers listed. Bluetooth technology and trademark are registered property of Bluetooth SIG. All rights reserved.