

S

T

S

L

A

B



Hearing Aid Compatibility (HAC) RF Emissions TEST REPORT

Report No: STS17020109H01

Issued for

Hoperun mMax Digital Inc.

4790 Irvine Blvd., Ste. 105-431 Irvine, CA 92620

Product Name:	CDMA 3G Mobile Phone
Brand Name:	Jabr box
Model No.:	H460
Series Model:	N/A
FCC ID:	2AKQN-H460
Test Standard:	ANSI C63.19:2011
Test Result:	Pass

Any reproduction of this document must be done in full. No single part of this document may be reproduced without permission from STS, All Test Data Presented in this report is only applicable to presented Test sample

Shenzhen STS Test Services Co., Ltd.
1/F., Building B, Zhuoke Science Park, No.190,Chongqing Road,
Fuyong Street, Bao'an District, Shenzhen, Guangdong, China
TEL: +86-755 3688 6288 FAX: +86-755 3688 6277 E-mail:sts@stsapp.com





Test Report Certification

Applicant's name : Hoperun mMax Digital Inc.
 Address : 4790 Irvine Blvd., Ste. 105-431 Irvine, CA 92620
Manufacturer's Name : Hoperun mMax Digital Inc.
 Address : 4790 Irvine Blvd., Ste. 105-431 Irvine, CA 92620

Product description

Product name : CDMA 3G Mobile Phone
 Trademark : Jabr box
 Model and/or type reference : H460
 Serial Model : N/A

Standards : ANSI C63.19:2011

The device was tested by Shenzhen STS Test Services Co., Ltd. in accordance with the measurement methods and procedures specified in KDB 865664 The test results in this report apply only to the tested sample of the stated device/equipment. Other similar device/equipment will not necessarily produce the same results due to production tolerance and measurement uncertainties.

Date of Test :
 Date (s) of performance of tests : 16 Mar. 2017
 Date of Issue : 29 Mar. 2017
 Test Result : **Pass**

Testing Engineer : *Aaron Bu*

 (Aaron Bu)

Technical Manager : *John Zou*

 (John Zou)

Authorized Signatory : *Vita Li*

 (Vita Li)





Table of Contents

1. General Information	4
1.1 EUT Description	4
1.2 Test Environment	5
1.3 Test Facility	5
2. System components	6
2.1 SATIMO System Description	6
2.2 E-Field Probe Specification	6
2.3 Axis Articulated Robot	6
2.4 Universal Device Positioner	7
2.5 Test Equipment List	8
2.6 Measurement Uncertainty	9
3. HAC RF Emission Measurement Evaluation	10
3.1 System Check	10
3.2 Dipole validation	10
3.3 System Validation Results	10
4. Device Under Test	11
5. Modulation interference Factor (MIF)	12
6. HAC TEST PROCEDURES	13
7. Test flowchart Per ANSI-PC63.19 2011	14
8. RF EMISSIONS	15
9 HAC RF Emission Test Results	15
9.1 Test Result	15
9.2 E-Field Emission for GSM:	16
10. HAC Test Photographs	21
11. System VALIDATION RESULTS	22
12. Probe Calibration And Dipole Calibration Report	23



1. General Information

1.1 EUT Description

Equipment	CDMA 3G Mobile Phone
Brand Name	Jabr box
Model No.	H460
Serial Model	N/A
FCC ID	2AKQN-H460
Model Difference	N/A
Hardware Version	S408_MB_V3.0
Software Version	HMD-H460JB
Device Type	Portable Device
EUT Stage	Production Unit
Frequency Range (TX)	BC 0: 824 ~ 849 MHz BC 1: 1850 ~ 1910 MHz BC 10: 817 ~ 824 MHz
M category	M4
Test Result	Pass
Operating Mode:	QPSK
Antenna Specification:	Internal Antenna
Power Class	CDMA BC 0/BC 1/BC 10: 3
Battery	Rated Voltage: 3.7V Charge Limit: 4.2V Capacity :1650mAh
Hotspot Mode:	Support
DTM Mode:	Not Support

1.2 Test Environment

Ambient conditions in the SAR laboratory:

Items	Required	Actual
Temperature (°C)	15-30	21~23
Humidity (%RH)	30-70	55~65

1.3 Test Facility

Shenzhen STS Test Services Co., Ltd.

Add. : 1/F., Building B, Zhuoke Science Park, No.190, Chongqing Road,
Fuyong Street, Bao'an District, Shenzhen, Guangdong, China

FCC Registration No.: 842334; IC Registration No.: 12108A-1

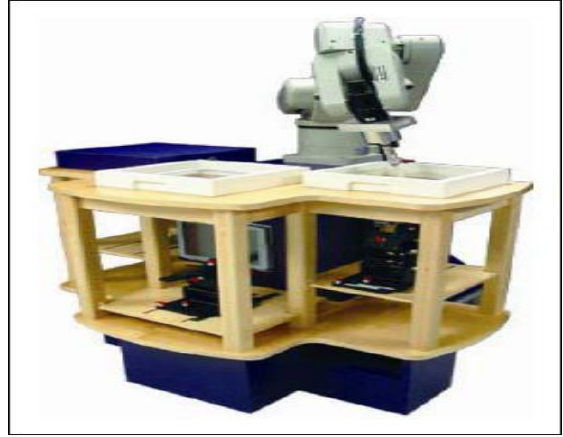
CNAS Registration No.:L7649;



2. System components

2.1 SATIMO System Description

SATIMO is fully compliant with the technical and scientific requirements of IEEE 1528, IEC 62209, CENELEC, ARIB, ACA, and the Federal Communications Commission. The system comprises of a six axes articulated robot which utilizes a dedicated controller. SATIMO uses the latest methodologies and FDTD order to provide a platform which is repeatable with minimum uncertainty.



2.2 E-Field Probe Specification

Device Under Test	
Device Type	COMOHAC E FIELD PROBE
Manufacturer	Satimo
Model	SCE
Serial Number	SN 06/14 EPH42
Product Condition (new / used)	new
Frequency Range of Probe	0.7GHz-2.5GHz
Resistance of Three Dipoles at Connector	Dipole 1: R1=0.214 MΩ Dipole 2: R2=0.213 MΩ Dipole 3: R3=0.204 MΩ



2.3 Axis Articulated Robot





SATIMO utilizes a six articulated robot, which is controlled using a Pentium based real-time movement controller. The movement kinematics engine utilizes proprietary (Thermo CRS) interpolation and extrapolation algorithms, which allow full freedom of movement for each of the six joints within the working envelop. Utilization of joint 6 allows for full probe rotation with a tolerance better than 0.05mm around the central axis.

Robot /Controller Manufacturer	KUKA
Number of Axis	Six independently controlled axis
Positioning Repeatability	$< \pm 0.03\text{mm}$
Controller Type	KR C4 compact
Robot Reach	901mm
Communication	RS232 and LAN compatible

2.4 Universal Device Positioner

The universal device positioner allows complete freedom of movement of the EUT. Developed to hold a EUT in a free-space scenario any additional loading attributable to the material used in the construction of the positioner has been eliminated. Repeatability has been enhanced through the linear scales which form the design used to indicate positioning for any given test scenario in all major axes.



2.5 Test Equipment List

NO.	Instrument	Manufacturer	Model	S/N	Cal. Date	Cal. Due Date
1	E-Field Probe	SATIMO	SCE	SN 06/14 EPH42	2016.09.01	2017.08.31
2	Reference Validation Dipole 850MHz	SATIMO	SID835	SN 13/14 DHA55	2014.09.01	2017.08.31
3	Reference Validation Dipole 1900MHz	SATIMO	SIDB1900	SN 13/14 DHB59	2014.09.01	2017.08.31
4	Dielectric Probe Kit	SATIMO	SCLMP	SN 32/14 OCPG52	2016.09.01	2017.08.31
5	Device Holder	SATIMO	SCLMP	SN 32/14 TABH37	2016.09.01	2017.08.31
6	Waveguide	SATIMO	SWG5500	SN 13/14 WGA32	2016.09.01	2017.08.31
7	COMHAC Test Bench	SATIMO	Version 2	NA	Validated. No cal required	Validated. No cal required
8	HAC positioning ruler	SATIMO	TABH12 SN 42/09	NA	Validated. No cal required	Validated. No cal required
9	SAR TEST BENCH	SATIMO	3G MOBILE PHONE POSITIONNING SYSTEM	SN 32/14 MSH97	Validated. No cal required	Validated. No cal required
10	SAR TEST BENCH	SATIMO	LAPTOP POSITIONNING SYSTEM	SN 32/14 LSH29	Validated. No cal required	Validated. No cal required
11	Temperature/Humidity sensor	Mieo	HH660	STS-H025	2016.10.26	2017.10.25
12	Multi Meter	Keithley	Multi Meter 2000	4050073	2016.10.23	2017.10.22
13	Amplifier	Mini-Circuit	ZHL-42	22374	2016.11.18	2017.11.17
14	Signal Generator	R&S	SMF100A	104260	2016.10.23	2017.10.22
15	Power Meter	R&S	NRP	100510	2016.10.23	2017.10.22
16	Power Sensor	R&S	NRP-Z11	101919	2016.10.23	2017.10.22
17	Network Analyzer	R&S	5071C	EMY46103472	2016.10.23	2017.10.22
18	KUKA Robot	KUKA	10012265	501821	2016.09.01	2017.08.31

2.6 Measurement Uncertainty

UNCERTAINTY EVALUATION FOR RF HAC MEASUREMENT

Uncertainty Component	Tol. (± dB)	Prob. Dist.	Div.	Uncertainty (dB)	Uncertainty (%)
Measurement System					
RF reflections	0.1	R	√3	0.06	
Field probe conv. Factor	0.4	R	√3	0.23	
Field probe anisotropy	0.25	R	√3	0.14	
Positioning accuracy	0.2	R	√3	0.12	
Probe cable placement	0.1	R	√3	0.06	
System repeatability	0.2	R	√3	0.12	
EUT repeatability	0.4	N	1	0.40	
Combined Standard Uncertainty		N	1	0.52	
Expanded Uncertainty (95% CONFIDENCE INTERVAL)		N	k=2	1.03	12.65
REPORTED Expanded uncertainty (confidence level of 95%, k = 2)		N	k=2	1.00	13.00

UNCERTAINTY EVALUATION FOR AUDIO HAC MEASUREMENT

Uncertainty Component	Tol. (± dB)	Prob. Dist.	Div.	Uncertainty (dB)	Uncertainty (%)
Measurement System					
RF reflections	0.1	R	√3	0.06	
Acoustic noise	0.1	R	√3	0.06	
Probe coil sensitivity	0.49	R	√3	0.28	
Reference signal level	0.25	R	√3	0.14	
Positioning accuracy	0.4	R	√3	0.23	
Cable loss	0.1	N	2	0.05	
Frequency analyzer	0.15	R	√3	0.09	
System repeatability	0.2	N	1	0.20	
Repeatability of the WD	0.4	N	1	0.40	
Combined Standard Uncertainty		N	1	0.61	
Expanded uncertainty (confidence level of 95%, k = 2)		N	k=2	1.22	15.05
REPORTED Expanded uncertainty (confidence level of 95%, k = 2)		N	k=2	1.20	15.00

3. HAC RF Emission Measurement Evaluation

3.1 System Check

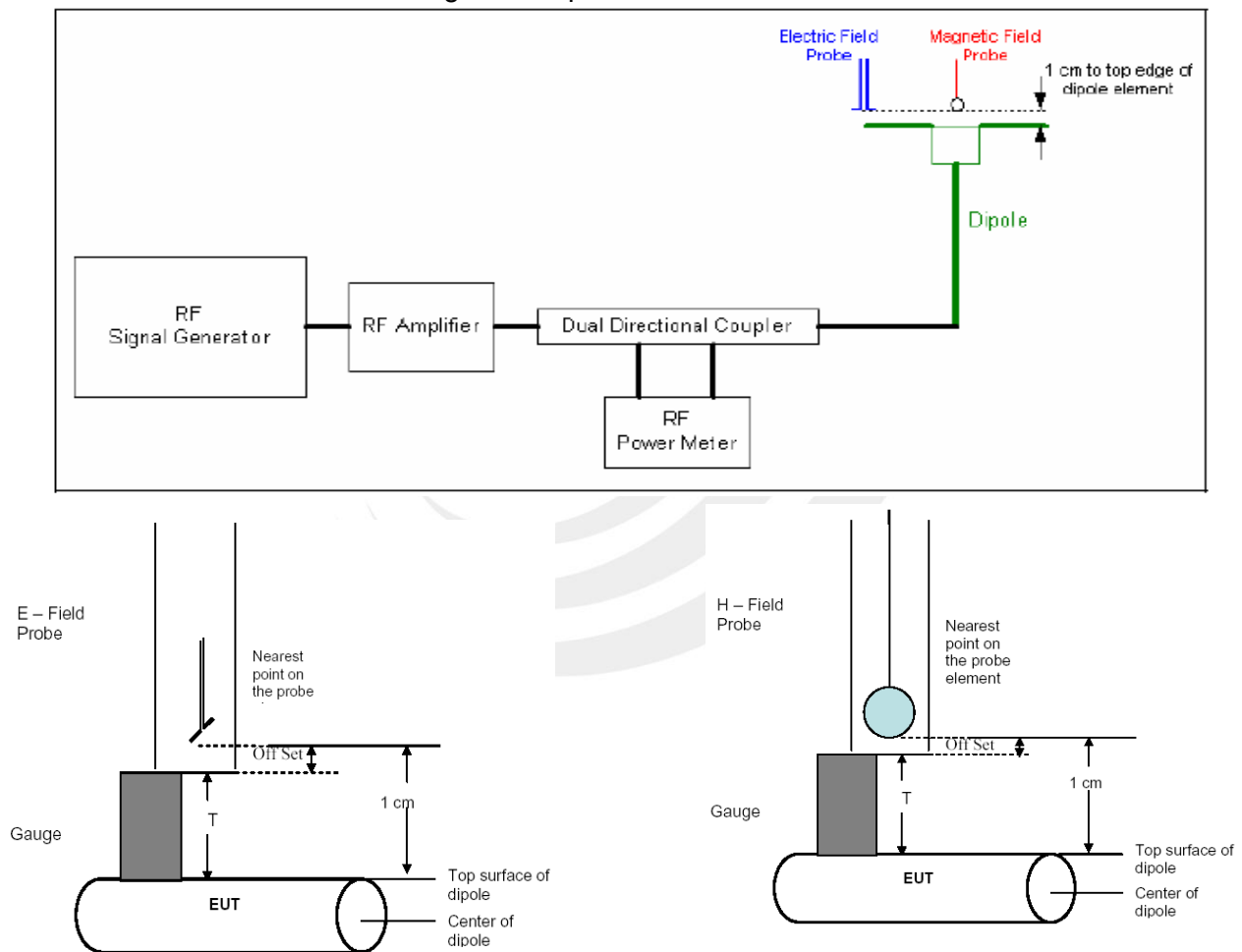
The test setup should be validated when first configured and verified periodically thereafter to ensure proper function. The procedure consists of two parts: dipole validation and determination of probe modulation factor

3.2 Dipole validation

The HAC validation dipole antenna serves as a known source for an electrical and magnetic RF output. Figure 2 shows the setup used for the dipole validation.

1. The dipole antenna was placed in the position normally occupied by the WD.
2. The dipole was energized with a 20 dBm un-modulated continuous-wave signal.
3. The length of the dipole was scanned with both E-field and H-field probes and the maximum value for each scan was recorded.
4. The readings were compared with the values provided by the probe manufacturer and were found to agree within the allowed tolerance of 10%.

Figure 2: Dipole Validation Procedure



The probe is positioned over the illuminated dipole at 10 mm distance from the nearest point on the probe sensor element to the top surface (edge) of the dipole element.

3.3 System Validation Results

Lab Temperature: 21 °C, Lab Humidity: 45%.

Date	Calibration Dipole	Frequency (MHz)	Input Power (dBm)	Target Value(V/m)	Measured (V/m)	Deviation(%)
2017/3/16	SN 06/14	850	20	220.4	219.2	-0.54
2017/3/16	EPH42 E-field	1900	20	153.4	154.1	0.46

Note: Deviation=((Measured Result)-(Target Value))/(Target Value)*100%



4. Device Under Test

Mobile model:	H460
Normal operation:	Held to head
Accessory:	Standard cover

List of air interfaces/bands & operating modes for model H460

air interfaces	Bands (MHz)	Type	HAC Tested	Simultaneous Transmissions Note:Not to be tested	OTT	Reduced power 20.19(c)(1)
CDMA	BC 0	VO	Yes	Yes Bluetooth, Wi-Fi	N/A	N/A
	BC 1		Yes		N/A	N/A
	BC 10		Yes		N/A	N/A
	EVDO	DT	N/A	Yes Bluetooth, Wi-Fi	N/A	N/A
	1 X Advance	VO	N/A	Yes Bluetooth,Wi-Fi	N/A	N/A
Wi-Fi	2450	DT	N/A	Yes Bluetooth, CDMA	N/A	N/A
Bluetooth	2450	DT	N/A	Yes CDMA, Wi-Fi	N/A	N/A
VO: Voice CMRS/PTSN Service Only V/D: Voice CMRS/PTSN and Data Service DT: Digital Transport						

5. Modulation interference Factor (MIF)

For any specific fixed and repeatable modulated signal, a modulation interference factor (MIF, expressed in dB) may be developed that relates its interference potential to its steady-state rms signal level or average power level. This factor is a function only of the audio-frequency amplitude modulation characteristics of the signal and is the same for field-strength and conducted power measurements. It is important to emphasize that the MIF is valid only for a specific repeatable audio-frequency amplitude modulation characteristic. Any change in modulation characteristic requires determination and application of a new MIF.

The MIF may be determined using a radiated RF field, a conducted RF signal, or in a preliminary stage, a mathematical analysis of a modeled RF signal:

- a) Verify the slope accuracy and dynamic range capability over the desired operating frequency band of a fast probe or sensor, square-law detector, as specified in D.3, and weighting system as specified in D.4 and D.5. For the probe and instrumentation included in the measurement of MIF, additional calibration and application of calibration factors are not required.
- b) Using RF illumination or conducted coupling, apply the specific modulated signal in question to the measurement system at a level within its confirmed operating dynamic range.
- c) Measure the steady-state rms level at the output of the fast probe or sensor.
- d) Measure the steady-state average level at the weighting output.
- e) Without changing the square-law detector or weighting system, and using RF illumination or conducted coupling, substitute for the specific modulated signal a 1 kHz, 80% amplitude-modulated carrier at the same frequency and adjust its strength until the level at the weighting output equals the step d) measurement.
- f) Without changing the carrier level from step e), remove the 1 kHz modulation and again measure the steady-state rms level indicated at the output of the fast probe or sensor.
- g) The MIF for the specific modulation characteristic is provided by the ratio of the step f) measurement to the step c) measurement, expressed in dB ($20 \times \log(\text{step f}) / \text{step c}$).

In practice, step e) and step f) need not be repeated for each MIF determination if the relationship between the two measurements has been preestablished for the measurement system over the operating frequency and dynamic ranges.

As a check on the procedure, the MIF for the specific modulation consisting of a 1 kHz, 80% AM signal is -1.2 dB, which is the ratio in dB of the average power of the unmodulated carrier to the average power of the modulated carrier ($10 \times \log(P_{unmod} / P_{mod})$), or equivalently the ratio in dB of the rms level of the unmodulated carrier to the rms level of the modulated carrier ($20 \times \log(L_{unmod} / L_{mod})$). The MIF for a 1/8 duty cycle, 217 Hz pulse-modulated signal (similar to basic GSM) is +3.3 dB. (Actual GSM WD measurements could vary due to differences in implementation or network protocol.)

MIF results for a given amplitude modulation characteristic should remain consistent at any signal level within the operating dynamic range of the test system. Caution should be used when measuring modulations that have large-magnitude MIF measurements as these place greater requirements on the test system dynamic range

Typical MIF levels are presented in Table D.1. The results shown may be considered representative for the specified protocols, but they are not intended to substitute for measurements of actual devices under test and their respective operating modes.

Transmission protocol	Modulation interference factor
GSM; full-rate version 2; speech codec/handset low	+3.63 dB
WCDMA; speech; speech codec low; AMR 12.2 kb/s	-27.23 dB
CDMA; speech; SO3; RC3; full frame rate: 8kEVRC	-19.75 dB
CDMA; speech; SO3; RC1; 1/8th frame rate; 8kEVRC	+3.10 dB

Table D.1—Sample MIF values for sine-wave modulations



6. HAC TEST PROCEDURES

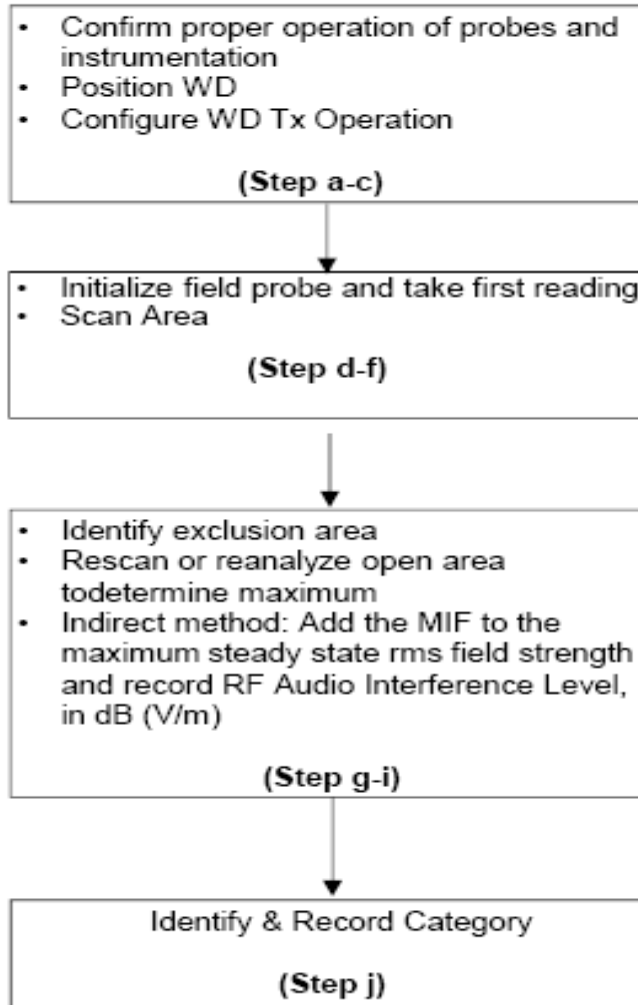
The following illustrate a typical RF emissions test scan over a wireless communications device:

1. Proper operation of the field probe, probe measurement system, other instrumentation, and the positioning system was confirmed.
2. DUT is positioned in its intended test position, acoustic output point of the device perpendicular to the field probe.
3. The DUT operation for maximum rated RF output power was configured and confirmed with the base station simulator, at the test channel and other normal operating parameters as intended for the test. The battery was ensured to be fully charged before each test.
4. The center sub-grid was centered over the center of the acoustic output (also audio band magnetic output, if applicable). The DUT audio output was positioned tangent (as physically possible) to the measurement plane.
5. A surface calibration was performed before each setup change to ensure repeatable spacing and proper maintenance of the measurement plane using the test Arch.
6. The measurement system measured the field strength at the reference location.
7. Measurements at 5 mm increments in the 5 × 5 cm region were performed and recorded. A 360° rotation about the azimuth axis at the maximum interpolated position was measured. For the worst-case condition, the peak reading from this rotation was used in re-evaluating the HAC category.
8. The system performed a drift evaluation by measuring the field at the reference location.
9. Steps 1 ~ 8 were done for both the E and H-Field measurements.



7. Test flowchart Per ANSI-PC63.19 2011

Test Instructions





8. RF EMISSIONS

The ANSI Standard presents performance requirements for acceptable interoperability of hearing aids with wireless communications devices. When these parameters are met, a hearing aid operates acceptably in close proximity to a wireless communications device.

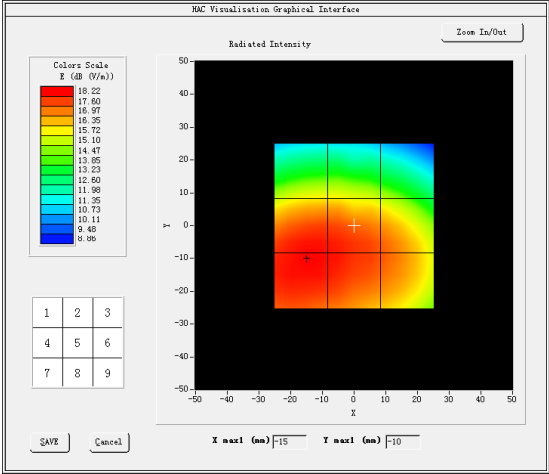
Emission Categories	E-field emissions	
	< 960 MHz	> 960 MHz
Category M1	50 to 55 dB (V/m)	40 to 45 dB (V/m)
Category M2	45 to 50 dB (V/m)	35 to 40 dB (V/m)
Category M3	40 to 45 dB (V/m)	30 to 35 dB (V/m)
Category M4	<40 dB (V/m)	<30 dB (V/m)

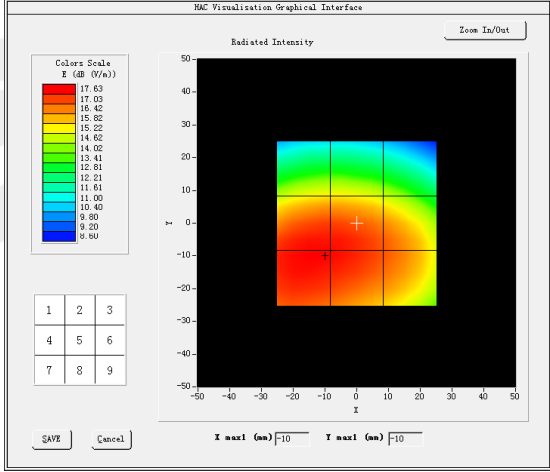
9 HAC RF Emission Test Results

9.1 Test Result

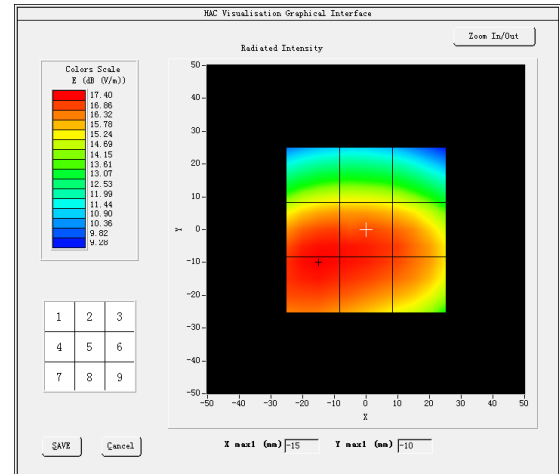
Band	BC 0			BC 1			BC 10		
Channel	1023	384	777	25	600	1175	450	560	670
Frequency(MHz)	824.7	836.52	848.97	1851.25	1880	1908.75	817.25	820.0	822.75
Result(dB V/m)	18.05	17.53	17.33	13.83	12.78	13.30	13.87	17.60	14.78
M-Rating	M4	M4	M4	M4	M4	M4	M4	M4	M4

9.2 E-Field Emission for GSM:

Grid 1: 15.39	Grid 2: 15.39	Grid 3: 14.56			
Grid 4: 18.16	Grid 5: 18.05	Grid 6: 17.25			
Grid 7: 18.22	Grid 8: 18.09	Grid 9: 17.28			
Operation mode	MIF(dB)	Channel	f(MHz)	Maximum value of total field (dB V/m)	M-Rating
BC 0	-19.75	1023	824.7	18.05	M4

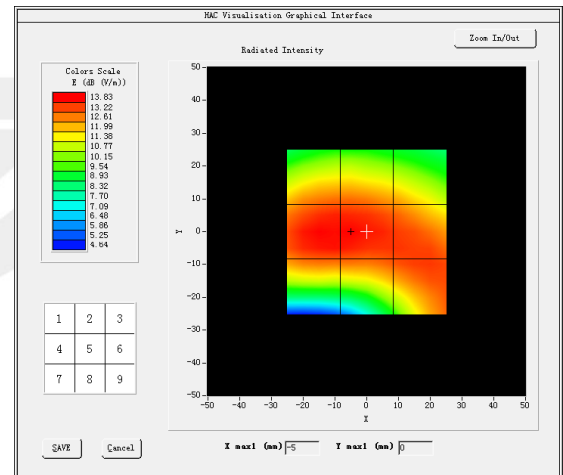
Grid 1: 14.90	Grid 2: 14.91	Grid 3: 14.15			
Grid 4: 17.57	Grid 5: 17.53	Grid 6: 16.72			
Grid 7: 17.64	Grid 8: 17.56	Grid 9: 16.73			
Operation mode	MIF(dB)	Channel	f(MHz)	Maximum value of total field (dB V/m)	M-Rating
BC 0	-19.75	384	836.52	17.53	M4

Grid 1: 14.95	Grid 2: 14.96	Grid 3: 14.60
Grid 4: 17.38	Grid 5: 17.33	Grid 6: 16.90
Grid 7: 17.41	Grid 8: 17.33	Grid 9: 16.86



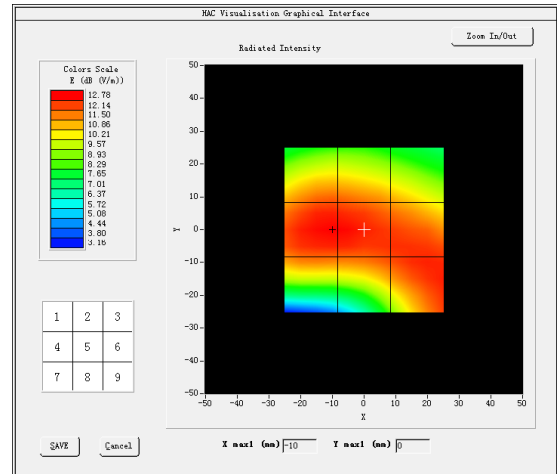
Operation mode	MIF(dB)	Channel	f(MHz)	Maximum value of total field (dB V/m)	M-Rating
BC 0	-19.75	777	848.97	17.33	M4

Grid 1: 12.76	Grid 2: 12.77	Grid 3: 12.10
Grid 4: 13.83	Grid 5: 13.83	Grid 6: 13.34
Grid 7: 13.12	Grid 8: 13.19	Grid 9: 13.32



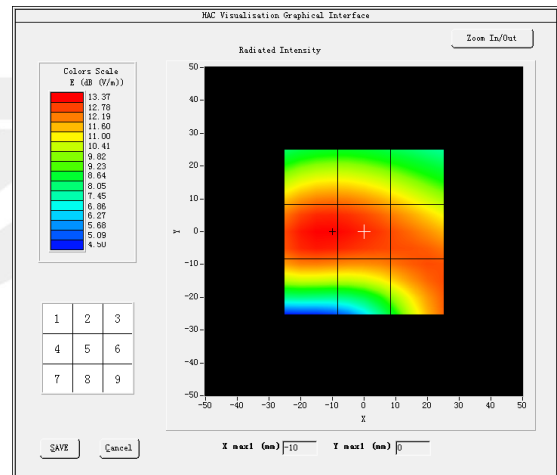
Operation mode	MIF(dB)	Channel	f(MHz)	Maximum value of total field (dB V/m)	M-Rating
BC 1	-19.75	25	1851.25	13.83	M4

Grid 1: 11.76	Grid 2: 11.67	Grid 3: 10.78
Grid 4: 12.78	Grid 5: 12.75	Grid 6: 12.37
Grid 7: 11.92	Grid 8: 12.17	Grid 9: 12.51

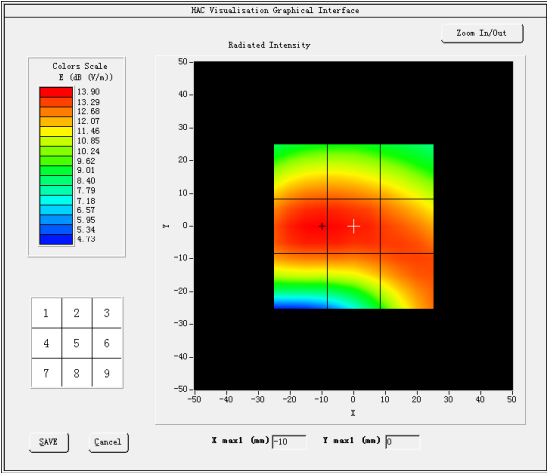


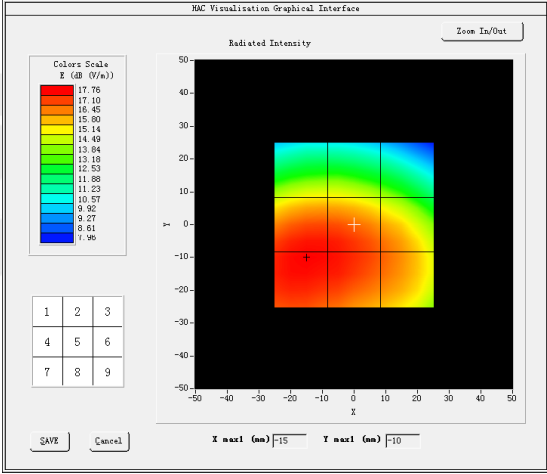
Operation mode	MIF(dB)	Channel	f(MHz)	Maximum value of total field (dB V/m)	M-Rating
BC 1	-19.75	600	1880.0	12.78	M4

Grid 1: 12.22	Grid 2: 12.19	Grid 3: 11.31
Grid 4: 13.39	Grid 5: 13.30	Grid 6: 12.69
Grid 7: 12.66	Grid 8: 12.52	Grid 9: 12.68



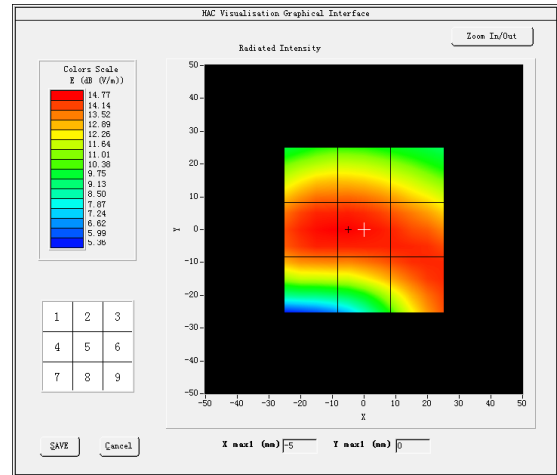
Operation mode	MIF(dB)	Channel	f(MHz)	Maximum value of total field (dB V/m)	M-Rating
BC 1	-19.75	1175	1908.75	13.30	M4

Grid 1: 12.79	Grid 2: 12.79	Grid 3: 12.11			
Grid 4: 13.91	Grid 5: 13.87	Grid 6: 13.37			
Grid 7: 13.17	Grid 8: 13.19	Grid 9: 13.32			
Operation mode	MIF(dB)	Channel	f(MHz)	Maximum value of total field (dB V/m)	M-Rating
BC 10	-19.75	450	817.9	13.87	M4

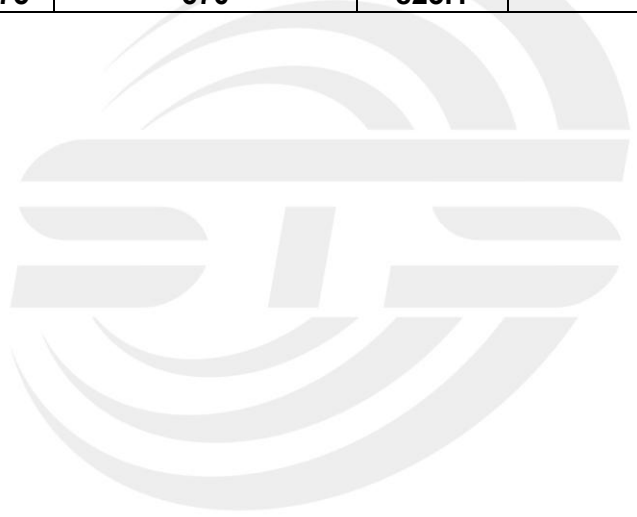
Grid 1: 14.80	Grid 2: 14.80	Grid 3: 13.76			
Grid 4: 17.68	Grid 5: 17.60	Grid 6: 16.62			
Grid 7: 17.76	Grid 8: 17.63	Grid 9: 16.69			
Operation mode	MIF(dB)	Channel	f(MHz)	Maximum value of total field (dB V/m)	M-Rating
BC 10	-19.75	560	820.5	17.60	M4



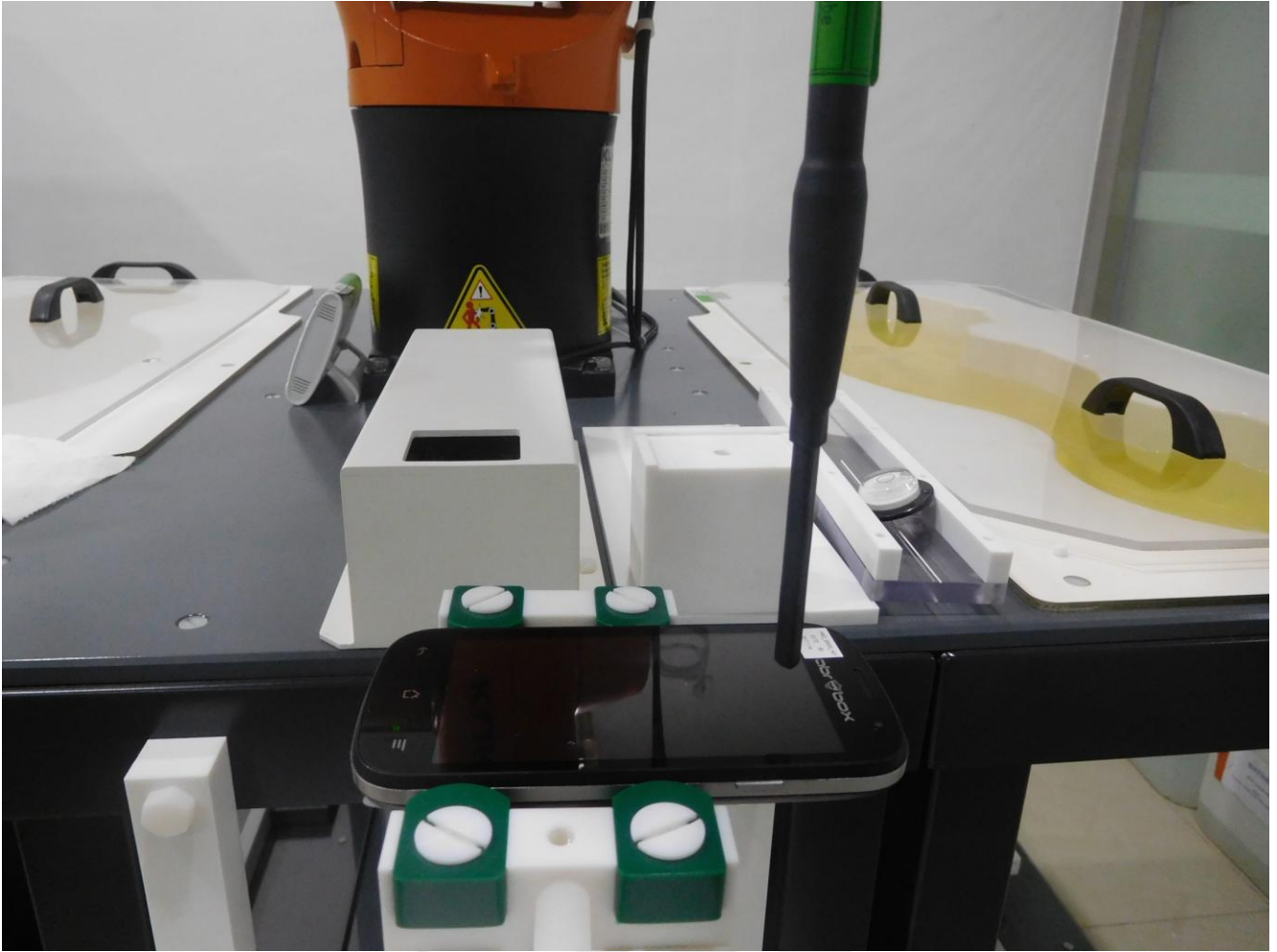
Grid 1: 13.71	Grid 2: 13.73	Grid 3: 13.06
Grid 4: 14.77	Grid 5: 14.78	Grid 6: 14.48
Grid 7: 13.94	Grid 8: 14.27	Grid 9: 14.43



Operation mode	MIF(dB)	Channel	f(MHz)	Maximum value of total field (dB V/m)	M-Rating
BC 10	-19.75	670	823.1	14.78	M4

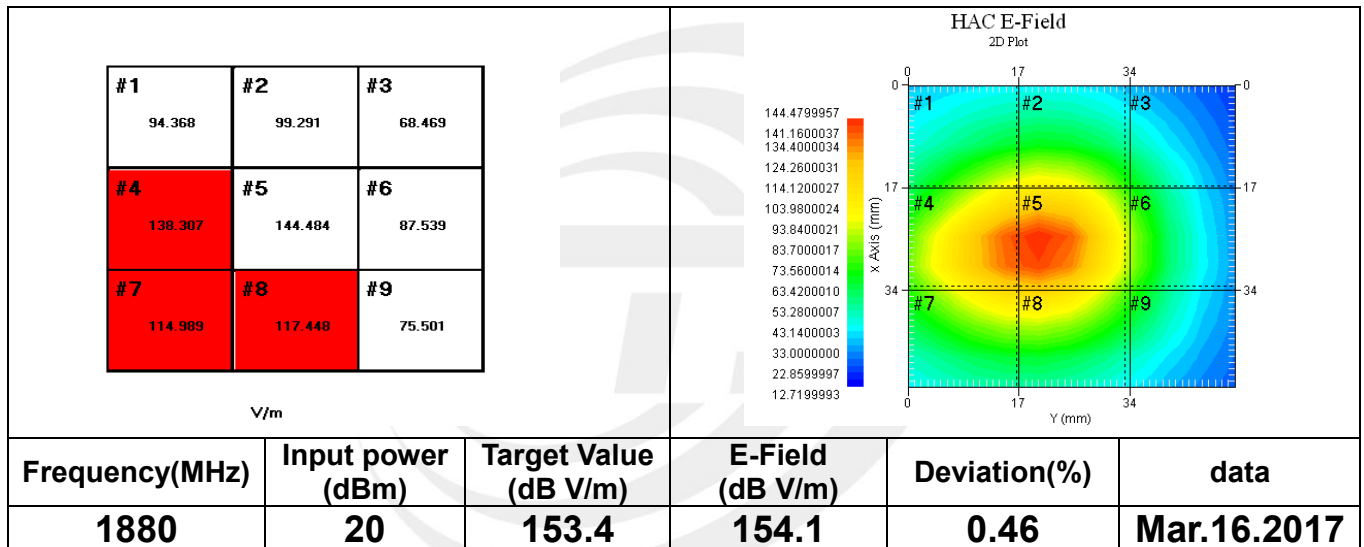
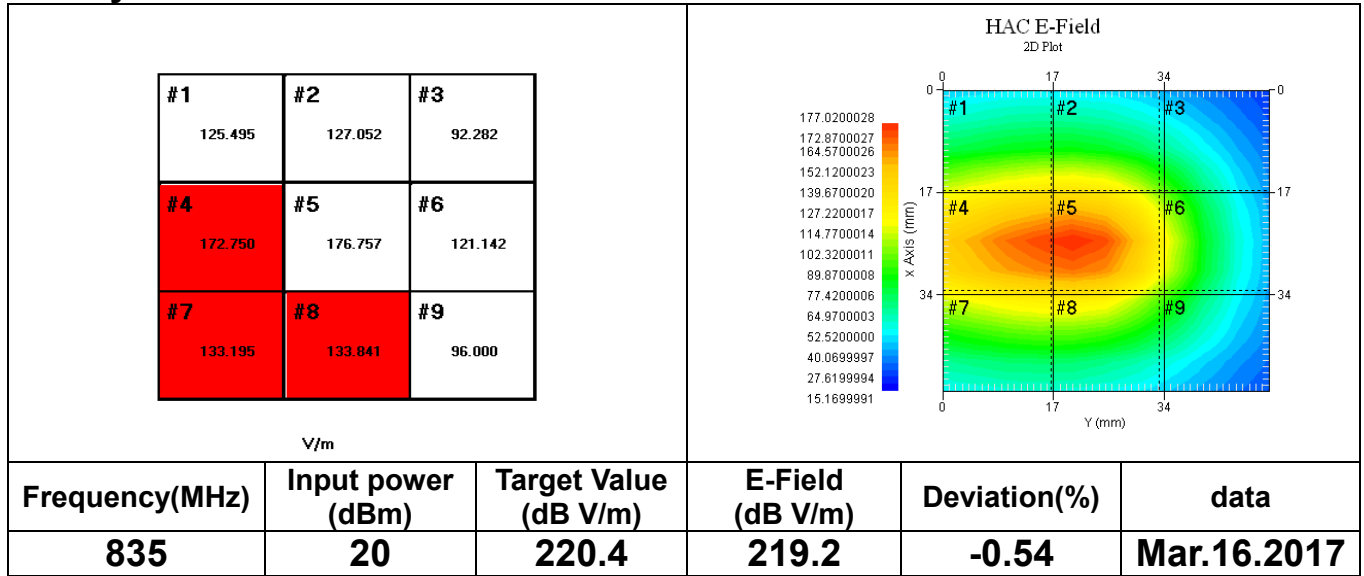


10. HAC Test Photographs



E-field

11. System VALIDATION RESULTS





12. Probe Calibration And Dipole Calibration Report

The following pages include the probe calibration used to evaluate HAC for the DUT.





COMOHAC E-Field Probe Calibration Report

Ref : ACR.262.14.14.SATU.A

SHENZHEN STS TEST SERVICES CO., LTD.
1/F, BUILDING 2, ZHUOKE SCIENCE PARK, No.190,
CHONGQING ROAD, FUYONG,
BAO' AN DISTRICT, SHENZHEN, GUANGDONG CHINA
SATIMO COMOHAC E-FIELD PROBE
SERIAL NO.: SN 06/14 EPH42

Calibrated at SATIMO US
2105 Barrett Park Dr. - Kennesaw, GA 30144



09/01/2016

Summary:

This document presents the method and results from an accredited COMOHAC E-Field Probe calibration performed in SATIMO USA using the CALIBAIR test bench, for use with a SATIMO COMOHAC system only. All calibration results are traceable to national metrology institutions.

	<i>Name</i>	<i>Function</i>	<i>Date</i>	<i>Signature</i>
<i>Prepared by :</i>	Jérôme LUC	Product Manager	9/19/2016	<i>JL</i>
<i>Checked by :</i>	Jérôme LUC	Product Manager	9/19/2016	<i>JL</i>
<i>Approved by :</i>	Kim RUTKOWSKI	Quality Manager	9/19/2016	<i>Kim Rutkowski</i>

	<i>Customer Name</i>
<i>Distribution :</i>	Shenzhen STS Test Services Co., Ltd.

<i>Issue</i>	<i>Date</i>	<i>Modifications</i>
A	9/19/2016	Initial release

TABLE OF CONTENTS

1	Device Under Test	4
2	Product Description	4
2.1	General Information _____	4
3	Measurement Method	4
3.1	Linearity _____	4
3.2	Sensitivity _____	4
3.3	Isotropy _____	5
3.4	Probe Modulation Response _____	5
4	Measurement Uncertainty	5
5	Calibration Measurement Results	5
5.1	Sensitivity in air _____	6
5.2	Linearity _____	7
5.3	Isotropy _____	7
6	List of Equipment	8

1 DEVICE UNDER TEST

Device Under Test	
Device Type	COMOHAC E FIELD PROBE
Manufacturer	Satimo
Model	SCE
Serial Number	SN 06/14 EPH42
Product Condition (new / used)	new
Frequency Range of Probe	0.7GHz-2.5GHz
Resistance of Three Dipoles at Connector	Dipole 1: R1=0.214 MΩ Dipole 2: R2=0.213 MΩ Dipole 3: R3=0.204 MΩ

A yearly calibration interval is recommended.

2 PRODUCT DESCRIPTION

2.1 GENERAL INFORMATION

Satimo’s COMOHAC E field Probes are built in accordance to the ANSI C63.19 and IEEE 1309 standards.



Figure 1 – Satimo COMOHAC E field Probe

Probe Length	330 mm
Length of Individual Dipoles	3.3 mm
Maximum external diameter	8 mm
Probe Tip External Diameter	5 mm
Distance between dipoles / probe extremity	3 mm

3 MEASUREMENT METHOD

All methods used to perform the measurements and calibrations comply with the ANSI C63.19 and IEEE 1309 standards.

3.1 LINEARITY

The linearity was determined using a standard dipole with the probe positioned 10 mm above the dipole. The input power of the dipole was adjusted from -15 to 36 dBm using a 1dB step (to cover the range 2V/m to 1000A/m).

3.2 SENSITIVITY

The sensitivity factors of the three dipoles were determined using the waveguide method outlined in the fore mentioned standards.

3.3 ISOTROPY

The axial isotropy was evaluated by exposing the probe to a reference wave from a standard dipole. The probe was rotated along its main axis from 0 - 360 degrees in 15 degree steps.

3.4 PROBE MODULATION RESPONSE

The modulation factor was determined by illuminating the probe with a reference wave from a standard dipole 10 mm away, applying first a CW signal and then a modulated signal (both at same power level). The modulation factor is the ratio, in linear units, of the CW to modulated signal reading.

4 MEASUREMENT UNCERTAINTY

The guidelines outlined in the IEEE 1528 and IEC/CEI 62209 standards were followed to generate the measurement uncertainty associated with an E-field probe calibration using the waveguide technique. All uncertainties listed below represent an expanded uncertainty expressed at approximately the 95% confidence level using a coverage factor of k=2, traceable to the Internationally Accepted Guides to Measurement Uncertainty.

Uncertainty analysis of the probe calibration in waveguide					
ERROR SOURCES	Uncertainty value (%)	Probability Distribution	Divisor	ci	Standard Uncertainty (%)
Incident or forward power	3.00%	Rectangular	$\sqrt{3}$	1	1.732%
Reflected power	3.00%	Rectangular	$\sqrt{3}$	1	1.732%
Field homogeneity	3.00%	Rectangular	$\sqrt{3}$	1	1.732%
Field probe positioning	5.00%	Rectangular	$\sqrt{3}$	1	2.887%
Field probe linearity	3.00%	Rectangular	$\sqrt{3}$	1	1.732%
Combined standard uncertainty					4.509%
Expanded uncertainty 95 % confidence level k = 2					9.0%

5 CALIBRATION MEASUREMENT RESULTS

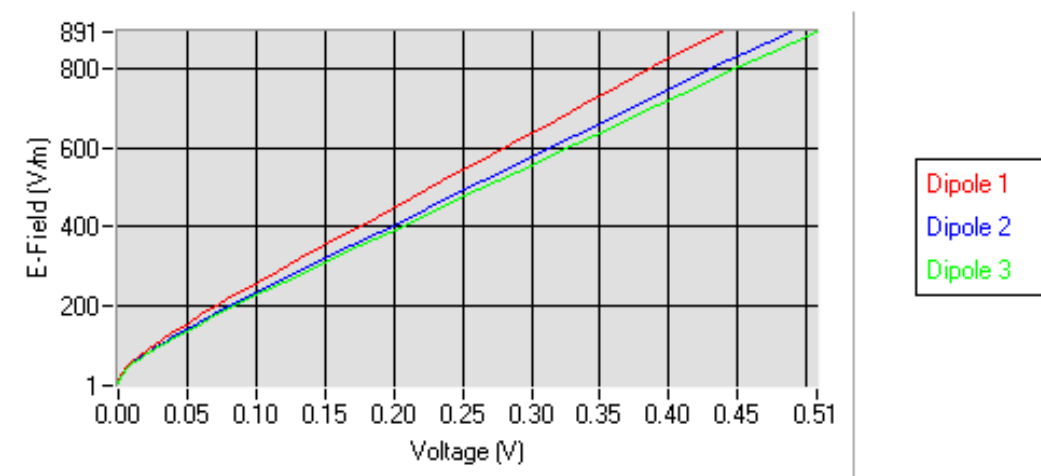
Calibration Parameters	
Lab Temperature	21 °C
Lab Humidity	45 %

5.1 SENSITIVITY IN AIR

Normx dipole 1 ($\mu\text{V}/(\text{V}/\text{m})^2$)	Normy dipole 2 ($\mu\text{V}/(\text{V}/\text{m})^2$)	Normz dipole 3 ($\mu\text{V}/(\text{V}/\text{m})^2$)
3.06	3.86	4.00

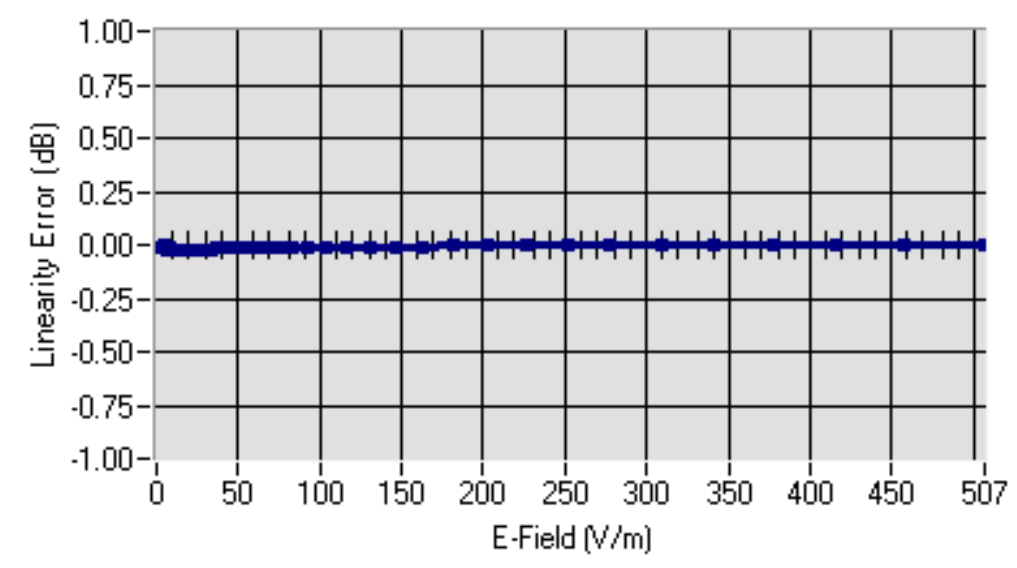
DCP dipole 1 (mV)	DCP dipole 2 (mV)	DCP dipole 3 (mV)
96	92	96

Calibration curves



5.2 LINEARITY

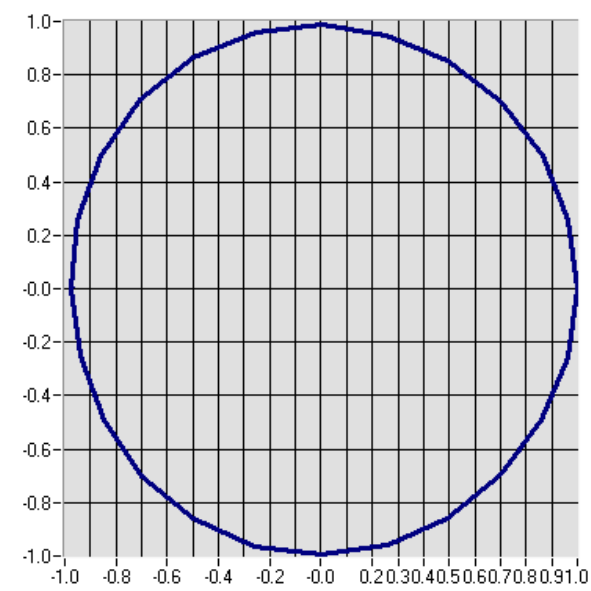
Linearity



Linearity: $\pm 0.68\%$ ($\pm 0.03\text{dB}$)

5.3 ISOTROPY

Isotropy curve



Isotropy: $\pm 1.32\%$ ($\pm 0.06\text{dB}$)

6 LIST OF EQUIPMENT

Equipment Summary Sheet				
Equipment Description	Manufacturer / Model	Identification No.	Current Calibration Date	Next Calibration Date
HAC positioning ruler	Satimo	TABH12 SN 42/09	Validated. No cal required.	Validated. No cal required.
COMOHAC Test Bench	Version 2	NA	Validated. No cal required.	Validated. No cal required.
Network Analyzer	Rhode & Schwarz ZVA	SN100132	02/2016	02/2019
Reference Probe	Satimo	EPH28 SN 08/11	10/2015	10/2016
Reference Probe	Satimo	HPH38 SN31/10	10/2015	10/2016
Multimeter	Keithley 2000	1188656	12/2013	12/2016
Signal Generator	Agilent E4438C	MY49070581	12/2013	12/2016
Amplifier	Aethercomm	SN 046	Characterized prior to test. No cal required.	Characterized prior to test. No cal required.
Power Meter	HP E4418A	US38261498	12/2013	12/2016
Power Sensor	HP ECP-E26A	US37181460	12/2013	12/2016
Directional Coupler	Narda 4216-20	01386	Characterized prior to test. No cal required.	Characterized prior to test. No cal required.
Waveguide	Mega Industries	069Y7-158-13-712	Validated. No cal required.	Validated. No cal required.
Waveguide Transition	Mega Industries	069Y7-158-13-701	Validated. No cal required.	Validated. No cal required.
Waveguide Termination	Mega Industries	069Y7-158-13-701	Validated. No cal required.	Validated. No cal required.
Temperature / Humidity Sensor	Control Company	11-661-9	8/2015	8/2018



HAC Reference Dipole Calibration Report

Ref : ACR.262.18.14.SATU.A

SHENZHEN STS TEST SERVICES CO., LTD.
1/F, BUILDING 2, ZHUOKE SCIENCE PARK, No.190,
CHONGQING ROAD, FUYONG,
BAO' AN DISTRICT, SHENZHEN, GUANGDONG CHINA
SATIMO COMOHAC REFERENCE DIPOLE
FREQUENCY: 1700-2000MHZ
SERIAL NO.: SN 13/14 DHB59

Calibrated at SATIMO US
2105 Barrett Park Dr. - Kennesaw, GA 30144



09/01/2014

Summary:

This document presents the method and results from an accredited HAC reference dipole calibration performed in SATIMO USA using the COMOHAC test bench. All calibration results are traceable to national metrology institutions.

	<i>Name</i>	<i>Function</i>	<i>Date</i>	<i>Signature</i>
<i>Prepared by :</i>	Jérôme LUC	Product Manager	9/19/2014	<i>JS</i>
<i>Checked by :</i>	Jérôme LUC	Product Manager	9/19/2014	<i>JS</i>
<i>Approved by :</i>	Kim RUTKOWSKI	Quality Manager	9/19/2014	<i>Kim Rutkowski</i>

	<i>Customer Name</i>
<i>Distribution :</i>	Shenzhen STS Test Services Co., Ltd.

<i>Issue</i>	<i>Date</i>	<i>Modifications</i>
A	9/19/2014	Initial release

TABLE OF CONTENTS

1	Introduction.....	4
2	Device Under TEst.....	4
3	Product Description	4
3.1	General Information _____	4
4	Measurement Method	4
4.1	Return Loss Requirements _____	5
4.2	Reference Dipole Calibration _____	5
5	Measurement Uncertainty.....	5
5.1	Return Loss _____	5
5.2	Validation Measurement _____	5
6	Calibration Measurement Results.....	6
6.1	Return Loss _____	6
6.2	Validation measurement _____	6
7	List of Equipment	8

1 INTRODUCTION

This document contains a summary of the requirements set forth by the ANSI C63.19 standard for reference dipoles used for HAC measurement system validations and the measurements that were performed to verify that the product complies with the fore mentioned standards.

2 DEVICE UNDER TEST

Device Under Test	
Device Type	COMOHAC 1700-2000 MHz REFERENCE DIPOLE
Manufacturer	Satimo
Model	SIDB1900
Serial Number	SN 13/14 DHB59
Product Condition (new / used)	New

A yearly calibration interval is recommended.

3 PRODUCT DESCRIPTION

3.1 GENERAL INFORMATION

Satimo's COMOHAC Validation Dipoles are built in accordance to the ANSI C63.19 standard. The product is designed for use with the COMOHAC system only.



Figure 1 – Satimo COMOHAC Validation Dipole

4 MEASUREMENT METHOD

The ANSI C63.19 standard outlines the requirements for reference dipoles to be used for system validation measurements. The following measurements were performed to verify that the product complies with the fore mentioned standard.

4.1 RETURN LOSS REQUIREMENTS

The dipole used for HAC system validation measurements and checks must have a return loss of -10 dB or better. The return loss measurement shall be performed in free space.

4.2 REFERENCE DIPOLE CALIBRATION

The IEEE ANSI C63-19 standard states that the dipole used for validation measurements and checks must be scanned with the E and H field probe, with the dipole 10 mm below the probe. The E and H field strength plots are compared to the simulation results obtained by SATIMO.

5 MEASUREMENT UNCERTAINTY

All uncertainties listed below represent an expanded uncertainty expressed at approximately the 95% confidence level using a coverage factor of k=2, traceable to the Internationally Accepted Guides to Measurement Uncertainty.

5.1 RETURN LOSS

The following uncertainties apply to the return loss measurement:

Frequency band	Expanded Uncertainty on Gain
400-6000MHz	0.1 dB

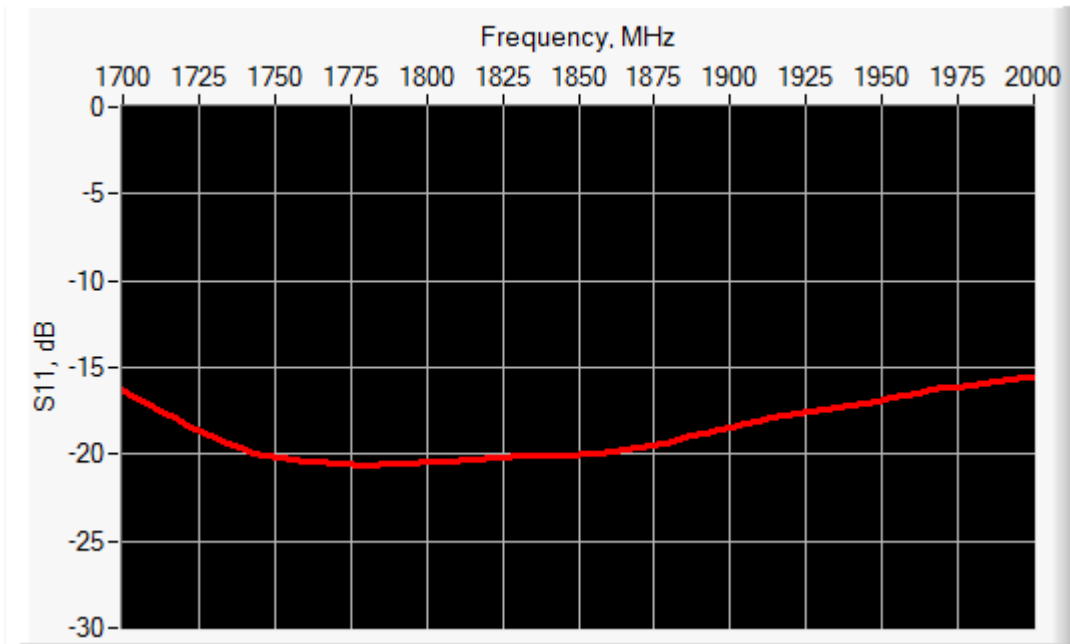
5.2 VALIDATION MEASUREMENT

The guideline outlined in the IEEE ANSI C63.19 standard was followed to generate the measurement uncertainty for validation measurements.

Uncertainty analysis of the probe calibration in waveguide					
ERROR SOURCES	Uncertainty value (%)	Probability Distribution	Divisor	Uncertainty (dB)	Standard Uncertainty (%)
RF reflections	0.1	R	$\sqrt{3}$	0.06	
Field probe conv. Factor	0.4	R	$\sqrt{3}$	0.23	
Field probe anisotropy	0.25	R	$\sqrt{3}$	0.14	
Positioning accuracy	0.2	R	$\sqrt{3}$	0.12	
Probe cable placement	0.1	R	$\sqrt{3}$	0.06	
System repeatability	0.2	R	$\sqrt{3}$	0.12	
EUT repeatability	0.4	N	1	0.40	
Combined standard uncertainty				0.52	
Expanded uncertainty 95 % confidence level k = 2				1.00	13.0

6 CALIBRATION MEASUREMENT RESULTS

6.1 RETURN LOSS



Frequency (MHz)	Worst Case Return Loss (dB)	Requirement (dB)
1700-2000 MHz	-15.74	-10

6.2 VALIDATION MEASUREMENT

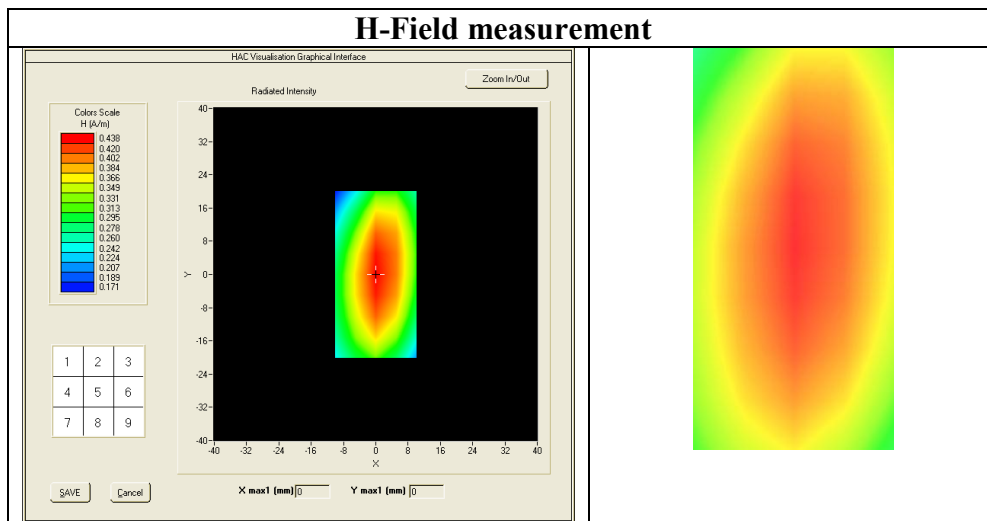
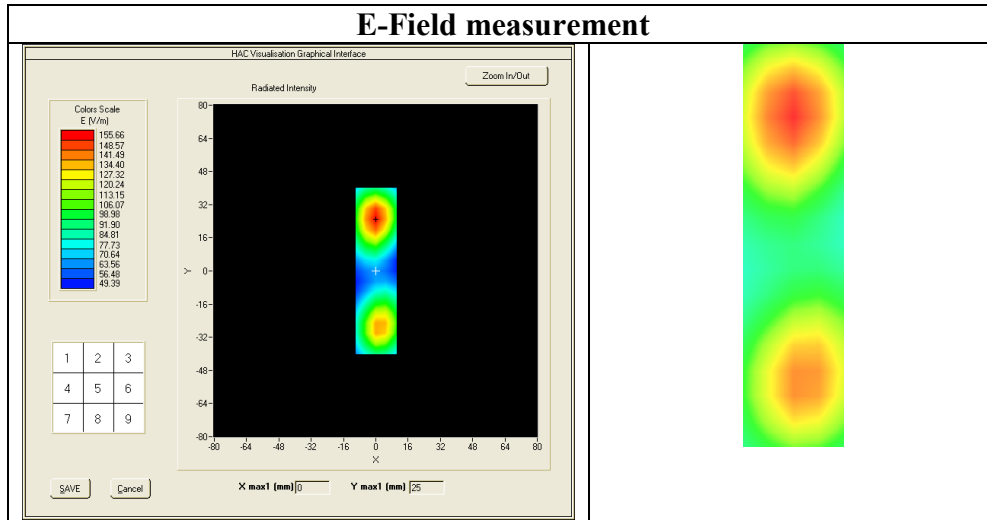
The IEEE ANSI C63.19 standard states that the system validation measurements must be performed using a reference dipole meeting the fore mentioned return loss requirements. The system validations measurement results are then compared to SATIMO’s simulated results.

Measurement Condition

Software Version	OpenHAC V2
HAC positioning ruler	SN 42/09 TABH12
E-Field probe	SN 08/11 EPH28
H-Field probe	SN 31/10 HPH38
Distance between dipole and sensor center	10 mm
E-field scan size	X=150mm/Y=20mm
H-field scan size	X=40mm/Y=20mm
Scan resolution	dx=5mm/dy=5mm
Frequency	1900 MHz
Input power	20 dBm
Lab Temperature	21°C
Lab Humidity	45%

Measurement Result

	Measured	Internal Requirement
E field (V/m)	155.66	153.4
H field (A/m)	0.44	0.445



7 LIST OF EQUIPMENT

Equipment Summary Sheet				
Equipment Description	Manufacturer / Model	Identification No.	Current Calibration Date	Next Calibration Date
HAC positioning ruler	Satimo	TABH12 SN 42/09	Validated. No cal required.	Validated. No cal required.
COMOHAC Test Bench	Version 2	NA	Validated. No cal required.	Validated. No cal required.
Network Analyzer	Rhode & Schwarz ZVA	SN100132	02/2013	02/2016
Reference Probe	Satimo	EPH28 SN 08/11	10/2013	10/2014
Reference Probe	Satimo	HPH38 SN31/10	10/2013	10/2014
Multimeter	Keithley 2000	1188656	12/2013	12/2016
Signal Generator	Agilent E4438C	MY49070581	12/2013	12/2016
Amplifier	Aethercomm	SN 046	Characterized prior to test. No cal required.	Characterized prior to test. No cal required.
Power Meter	HP E4418A	US38261498	12/2013	12/2016
Power Sensor	HP ECP-E26A	US37181460	12/2013	12/2016
Directional Coupler	Narda 4216-20	01386	Characterized prior to test. No cal required.	Characterized prior to test. No cal required.
Temperature and Humidity Sensor	Control Company	11-661-9	8/2012	8/2015



HAC Reference Dipole Calibration Report

Ref : ACR.262.17.14.SATU.A

SHENZHEN STS TEST SERVICES CO., LTD.
1/F, BUILDING 2, ZHUOKE SCIENCE PARK, No.190,
CHONGQING ROAD, FUYONG,
BAO' AN DISTRICT, SHENZHEN, GUANGDONG CHINA
SATIMO COMOHAC REFERENCE DIPOLE
FREQUENCY: 800-950MHZ
SERIAL NO.: SN 13/14 DHA55

Calibrated at SATIMO US
2105 Barrett Park Dr. - Kennesaw, GA 30144



09/01/2014

Summary:

This document presents the method and results from an accredited HAC reference dipole calibration performed in SATIMO USA using the COMOHAC test bench. All calibration results are traceable to national metrology institutions.

	<i>Name</i>	<i>Function</i>	<i>Date</i>	<i>Signature</i>
<i>Prepared by :</i>	Jérôme LUC	Product Manager	9/19/2014	<i>JS</i>
<i>Checked by :</i>	Jérôme LUC	Product Manager	9/19/2014	<i>JS</i>
<i>Approved by :</i>	Kim RUTKOWSKI	Quality Manager	9/19/2014	<i>Kim Rutkowski</i>

	<i>Customer Name</i>
<i>Distribution :</i>	Shenzhen STS Test Services Co., Ltd.

<i>Issue</i>	<i>Date</i>	<i>Modifications</i>
A	9/19/2014	Initial release

TABLE OF CONTENTS

1	Introduction.....	4
2	Device Under TEst.....	4
3	Product Description	4
3.1	General Information _____	4
4	Measurement Method	4
4.1	Return Loss Requirements _____	5
4.2	Reference Dipole Calibration _____	5
5	Measurement Uncertainty.....	5
5.1	Return Loss _____	5
5.2	Validation Measurement _____	5
6	Calibration Measurement Results.....	6
6.1	Return Loss _____	6
6.2	Validation measurement _____	6
7	List of Equipment	8

1 INTRODUCTION

This document contains a summary of the requirements set forth by the ANSI C63.19 standard for reference dipoles used for HAC measurement system validations and the measurements that were performed to verify that the product complies with the fore mentioned standards.

2 DEVICE UNDER TEST

Device Under Test	
Device Type	COMOHAC 800-950 MHz REFERENCE DIPOLE
Manufacturer	Satimo
Model	SIDB835
Serial Number	SN 13/14 DHA55
Product Condition (new / used)	New

A yearly calibration interval is recommended.

3 PRODUCT DESCRIPTION

3.1 GENERAL INFORMATION

Satimo’s COMOHAC Validation Dipoles are built in accordance to the ANSI C63.19 standard. The product is designed for use with the COMOHAC system only.



Figure 1 – Satimo COMOHAC Validation Dipole

4 MEASUREMENT METHOD

The ANSI C63.19 standard outlines the requirements for reference dipoles to be used for system validation measurements. The following measurements were performed to verify that the product complies with the fore mentioned standard.

4.1 RETURN LOSS REQUIREMENTS

The dipole used for HAC system validation measurements and checks must have a return loss of -10 dB or better. The return loss measurement shall be performed in free space.

4.2 REFERENCE DIPOLE CALIBRATION

The IEEE ANSI C63-19 standard states that the dipole used for validation measurements and checks must be scanned with the E and H field probe, with the dipole 10 mm below the probe. The E and H field strength plots are compared to the simulation results obtained by SATIMO.

5 MEASUREMENT UNCERTAINTY

All uncertainties listed below represent an expanded uncertainty expressed at approximately the 95% confidence level using a coverage factor of k=2, traceable to the Internationally Accepted Guides to Measurement Uncertainty.

5.1 RETURN LOSS

The following uncertainties apply to the return loss measurement:

Frequency band	Expanded Uncertainty on Gain
400-6000MHz	0.1 dB

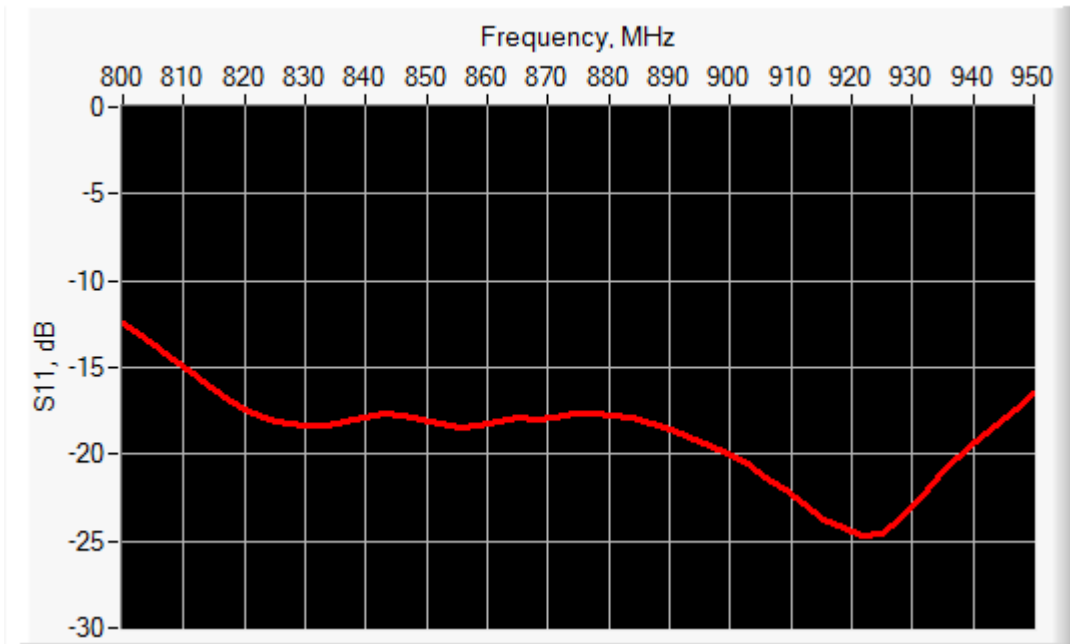
5.2 VALIDATION MEASUREMENT

The guideline outlined in the IEEE ANSI C63.19 standard was followed to generate the measurement uncertainty for validation measurements.

Uncertainty analysis of the probe calibration in waveguide					
ERROR SOURCES	Uncertainty value (%)	Probability Distribution	Divisor	Uncertainty (dB)	Standard Uncertainty (%)
RF reflections	0.1	R	$\sqrt{3}$	0.06	
Field probe conv. Factor	0.4	R	$\sqrt{3}$	0.23	
Field probe anisotropy	0.25	R	$\sqrt{3}$	0.14	
Positioning accuracy	0.2	R	$\sqrt{3}$	0.12	
Probe cable placement	0.1	R	$\sqrt{3}$	0.06	
System repeatability	0.2	R	$\sqrt{3}$	0.12	
EUT repeatability	0.4	N	1	0.40	
Combined standard uncertainty				0.52	
Expanded uncertainty 95 % confidence level k = 2				1.00	13.0

6 CALIBRATION MEASUREMENT RESULTS

6.1 RETURN LOSS



Frequency (MHz)	Worst Case Return Loss (dB)	Requirement (dB)
800-950 MHz	-12.94	-10

6.2 VALIDATION MEASUREMENT

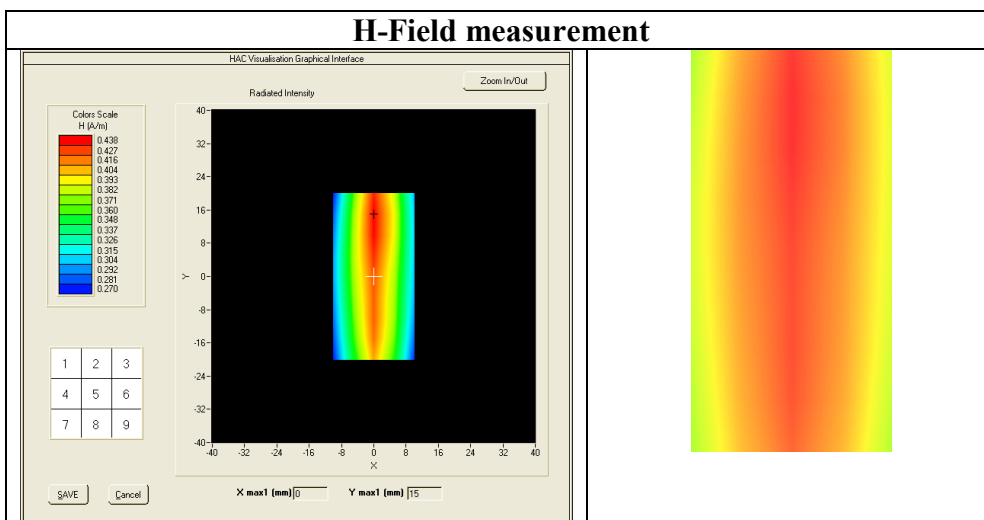
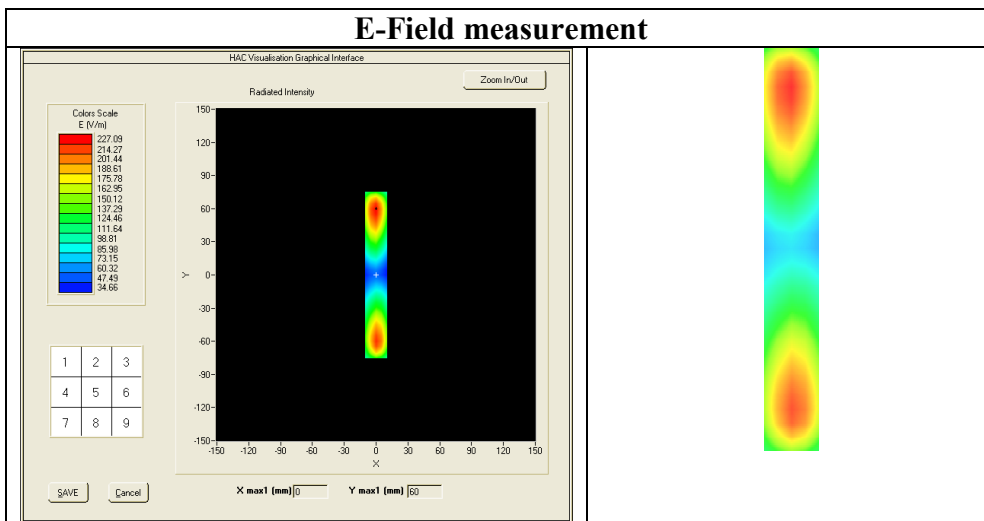
The IEEE ANSI C63.19 standard states that the system validation measurements must be performed using a reference dipole meeting the fore mentioned return loss requirements. The system validations measurement results are then compared to SATIMO’s simulated results.

Measurement Condition

Software Version	OpenHAC V2
HAC positioning ruler	SN 42/09 TABH12
E-Field probe	SN 08/11 EPH28
H-Field probe	SN 31/10 HPH38
Distance between dipole and sensor center	10 mm
E-field scan size	X=150mm/Y=20mm
H-field scan size	X=40mm/Y=20mm
Scan resolution	dx=5mm/dy=5mm
Frequency	835 MHz
Input power	20 dBm
Lab Temperature	21°C
Lab Humidity	45%

Measurement Result

	Measured	Internal Requirement
E field (V/m)	227.09	220.4
H field (A/m)	0.44	0.445



7 LIST OF EQUIPMENT

Equipment Summary Sheet				
Equipment Description	Manufacturer / Model	Identification No.	Current Calibration Date	Next Calibration Date
HAC positioning ruler	Satimo	TABH12 SN 42/09	Validated. No cal required.	Validated. No cal required.
COMOHAC Test Bench	Version 2	NA	Validated. No cal required.	Validated. No cal required.
Network Analyzer	Rhode & Schwarz ZVA	SN100132	02/2013	02/2016
Reference Probe	Satimo	EPH28 SN 08/11	10/2013	10/2014
Reference Probe	Satimo	HPH38 SN31/10	10/2013	10/2014
Multimeter	Keithley 2000	1188656	12/2013	12/2016
Signal Generator	Agilent E4438C	MY49070581	12/2013	12/2016
Amplifier	Aethercomm	SN 046	Characterized prior to test. No cal required.	Characterized prior to test. No cal required.
Power Meter	HP E4418A	US38261498	12/2013	12/2016
Power Sensor	HP ECP-E26A	US37181460	12/2013	12/2016
Directional Coupler	Narda 4216-20	01386	Characterized prior to test. No cal required.	Characterized prior to test. No cal required.
Temperature and Humidity Sensor	Control Company	11-661-9	8/2012	8/2015



COMOHAC TMFS Calibration Report

Ref : ACR.262.19.14.SATU.A

SHENZHEN STS TEST SERVICES CO., LTD.
1/F, BUILDING 2, ZHUOKE SCIENCE PARK, No.190,
CHONGQING ROAD, FUYONG,
BAO' AN DISTRICT, SHENZHEN, GUANGDONG, CHINA
SATIMO COMOHAC MAGNETIC FIELD
SIMULATOR
SERIAL NO.: SN 07/14 TMFS24

Calibrated at SATIMO US
2105 Barrett Park Dr. - Kennesaw, GA 30144



09/01/2014

Summary:

This document presents the method and results from an accredited COMOHAC TMFS calibration performed in SATIMO USA using the COMOHAC test bench, for use with a SATIMO COMOHAC system only. All calibration results are traceable to national metrology institutions.

	<i>Name</i>	<i>Function</i>	<i>Date</i>	<i>Signature</i>
<i>Prepared by :</i>	Jérôme LUC	Product Manager	9/19/2014	<i>JL</i>
<i>Checked by :</i>	Jérôme LUC	Product Manager	9/19/2014	<i>JL</i>
<i>Approved by :</i>	Kim RUTKOWSKI	Quality Manager	9/19/2014	<i>Kim Rutkowski</i>

	<i>Customer Name</i>
<i>Distribution :</i>	Shenzhen STS Test Services Co., Ltd.

<i>Issue</i>	<i>Date</i>	<i>Modifications</i>
A	9/19/2014	Initial release

TABLE OF CONTENTS

1	Device Under Test	4
2	Product Description	4
2.1	General Information _____	4
3	Measurement Method	4
3.1	Maximum Axial and Radial Magnetic Field Values _____	4
4	Measurement Uncertainty	4
5	Calibration Measurement Results	5
5.1	Maximum Axial and Radial Magnetic Field Values _____	5
6	List of Equipment	7

1 DEVICE UNDER TEST

Device Under Test	
Device Type	COMOHAC Magnetic Field Simulator
Manufacturer	Satimo
Model	STMFS
Serial Number	SN 07/14 TMFS24
Product Condition (new / used)	New
Frequency Range	200-5000 Hz

A yearly calibration interval is recommended.

2 PRODUCT DESCRIPTION

2.1 GENERAL INFORMATION

Satimo's COMOHAC T-coil Probes are built in accordance to the ANSI C63.19 and ANSI S3.22-2003 standards.



Figure 1 – *Satimo COMOHAC Magnetic Field Simulator*

3 MEASUREMENT METHOD

All methods used to perform the measurements and calibrations comply with the ANSI C63.19. All measurements were performed with the TMFS in the standard device test configuration, with the TMFS in free space, 10 mm below the coil center.

3.1 MAXIMUM AXIAL AND RADIAL MAGNETIC FIELD VALUES

An audio signal was fed into the TMFS and the magnetic field measured and recorded over an area scan with the T-coil probe in three orientations; axial and two radial. The maximum magnetic field is recorded for all three T-coil orientations.

4 MEASUREMENT UNCERTAINTY

The guideline outlined in the IEEE ANSI C63.19 standard was followed to generate the measurement uncertainty for validation measurements. All uncertainties listed below represent an expanded uncertainty expressed at approximately the 95% confidence level using a coverage factor of $k=2$, traceable to the Internationally Accepted Guides to Measurement Uncertainty.

Uncertainty analysis of the probe calibration in Helmholtz Coil					
Uncertainty Component	Tol. (± dB)	Prob. Dist.	Div.	Uncertainty (dB)	Uncertainty (%)
Reflections	0.1	R	$\sqrt{3}$	0.06	
Acoustic noise	0.1	R	$\sqrt{3}$	0.06	
Probe coil sensitivity	0.49	R	$\sqrt{3}$	0.28	
Reference signal level	0.25	R	$\sqrt{3}$	0.14	
Positioning accuracy	0.2	R	$\sqrt{3}$	0.12	
Cable loss	0.1	N	1	0.05	
Frequency analyzer	0.15	R	$\sqrt{3}$	0.09	
System repeatability	0.2	N	1	0.20	
Repeatability of the WD	0.1	N	1	0.10	
Combined standard uncertainty		N	1	0.43	
Expanded uncertainty 95 % confidence level k = 2		N	2	0.85	10.3%

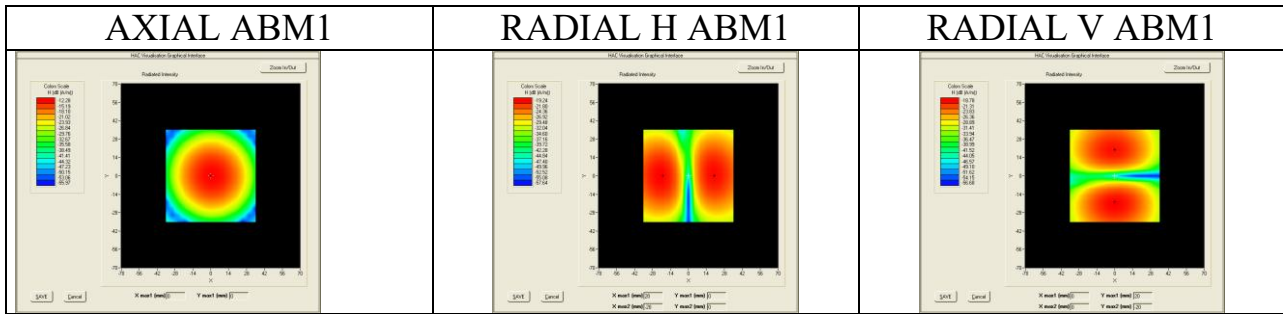
5 CALIBRATION MEASUREMENT RESULTS

Calibration Parameters	
Software	OpenHAC V2
HAC positioning ruler	SN 42/09 TABH12
T-Coil probe	SN 47/10 TCP18
Distance between TMFS and coil center	10 mm
Frequency	1025 Hz
Scan Size	X=70mm/Y=70mm
Scan Resolution	dx=5mm/dy=5mm
Output level	0.5 VAC
Lab Temperature	21°C
Lab Humidity	45%

5.1 MAXIMUM AXIAL AND RADIAL MAGNETIC FIELD VALUES

Test Description	Measured Magnetic Field	
	Location	Intensity (dB A/m)
Axial	Max	-12.06
Radial H	Right side	-19.27
	Left side	-19.03

Radial V	Upper side	-19.12
	Lower side	-18.56



6 LIST OF EQUIPMENT

Equipment Summary Sheet				
Equipment Description	Manufacturer / Model	Identification No.	Current Calibration Date	Next Calibration Date
COMOHAC Test Bench	Version 2	NA	Validated. No cal required.	Validated. No cal required.
HAC positioning ruler	Satimo	TABH12 SN 42/09	Validated. No cal required.	Validated. No cal required.
Audio Generator	National Instruments	15222AE	01/2014	01/2017
Reference Probe	Satimo	TCP 18 SN 47/10	10/2013	10/2014
Multimeter	Keithley 2000	1188656	12/2013	12/2016
Temperature / Humidity Sensor	Control Company	11-661-9	8/2012	8/2015