



AWESOME FLYS FOR DREAM



说明书
Instructions

YUBI
XV130



AWESOME

Operation guide

Knowledge of aircraft

- The main body uses the carbon fiber composite material and the PP injection molding shell ability has the strong toughness and the resistance to fall.
- Lightweight volume is suitable for outdoor and indoor flight weight of the module design
- The new BLHELI-S four in one electrically adjustable flight of the linear is better
- The multifunctional integrated F3 module design of flight control system and 5.8G image transmission

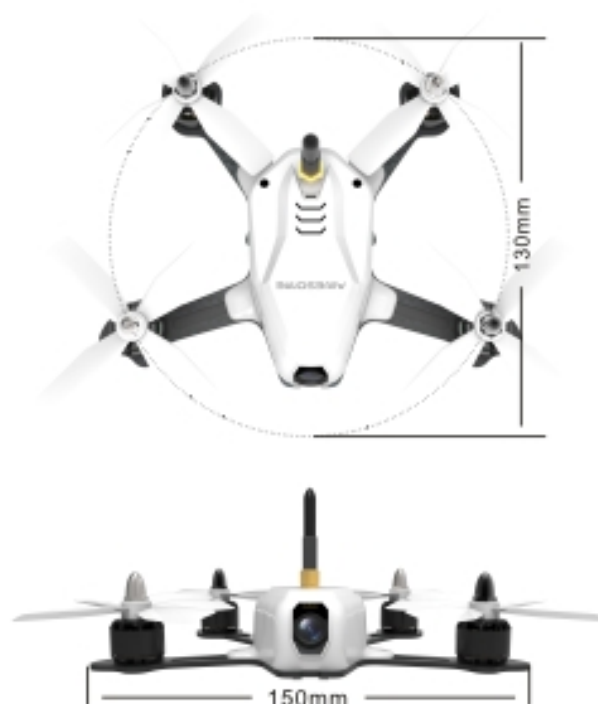
Aircraft said solution

- ① Camera ⑥ wc Propeller
② Fuselage plate ⑦ wcc Propeller
③ wcc moto ⑧ 5.8g antenna
④ wc moto ⑨ pp Shell



parameter

Product Name:	XV-130
Wing length:	75mm
Fuselage wheelbase:	130mm
Body size:	150*115*35mm
Weight (without battery):	115g
Brushless motor:	1306-3600kv
Brushless esc:	20A BLHELI-S
Flight control system:	AWESOME F3
Camera	
System standard:	PAL/NTSC
Resolution:	600TVL
Video output:	1.0V/75P-P ohm
Power input:	5V DC
5.8G image transmission	
Transmit power :	25mw
Working voltage:	5V-1A
5.8G天线	
Operating frequency:	5600-6000mhz
Resident Bobbi:	5800CHZ 1.2at
Gain:	2.8dBi



Operation guide

Install receiver

The outer shell of the vehicle is removed with only two PCB plates.
The first layer is F3 and 5.8G image transmission board integrated flight control
The second layer is BLHELI-S four in one electric tune
Please use a compatible SBUS PPM Mini receiver installed in the receiver

⚠ warning

Before use, please install the 5.8G antenna on the map
Peripheral equipment from power not more than 5V/1A in flight control
Camera interface voltage can be selected VCC (battery voltage) /5V Watch your camera work voltage

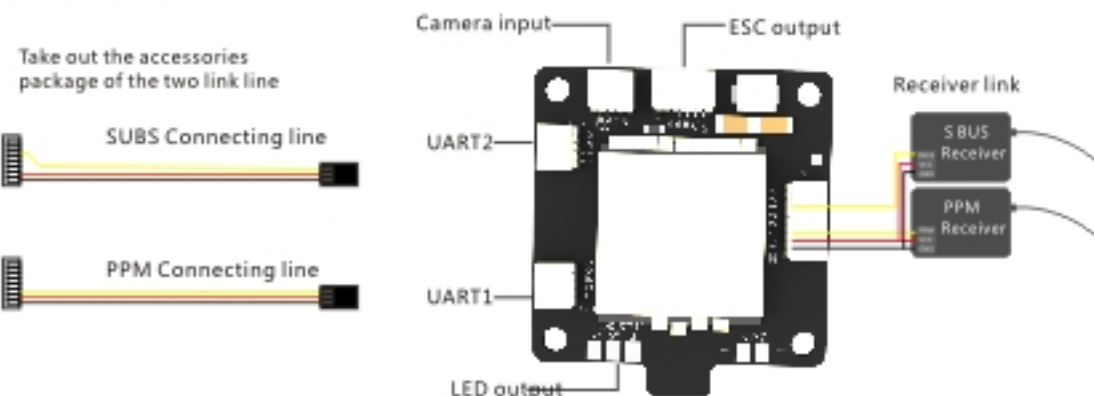
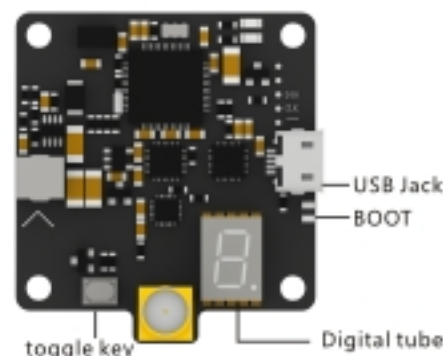


Image transmission

Replacement frequency: under normal working condition, press button 2 seconds to enter the open, frequency group switching options, digital tube displays the ABCD in order to beat, when you need to display the short press frequency group, channel mode, short channel switching according to a selected channels required after the long press you can modify the stored frequency.

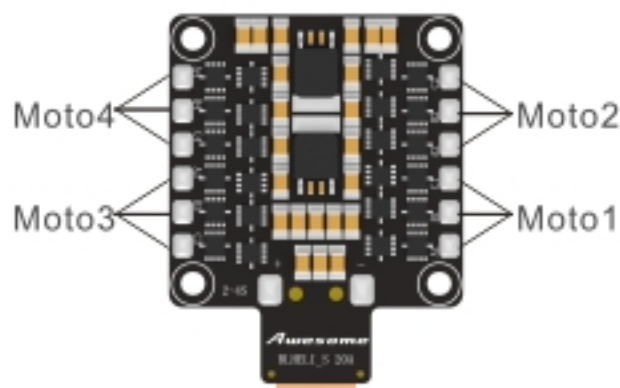
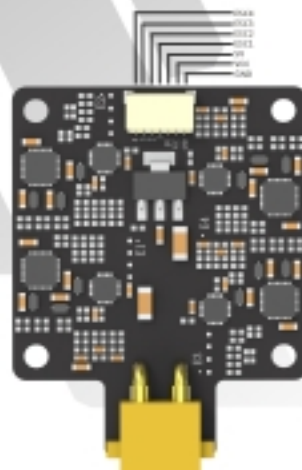
Closed graph transmission: under normal working condition, press the button for 2 seconds to open, pass into the rent frequency switching mode, at this time to close the image transmission transmission mode, the need to restore the launch mode please press button 2 seconds (not short press), image transmission will re open launch



⚠ warning

Connection must pay attention to the power supply polarity, the power supply will be the fault of the power supply will be burned, can not be repaired
The electrical regulation must be carried out before the calibration process can work properly.
VCC port for battery voltage
5V output current maximum 500mA, more than the rated operating current may damage the electric

BLHeli-S 20A



Operation guide

Propeller installation

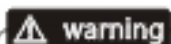


warning

Please identify the forward and reverse propeller to avoid damage to the aircraft and people



Loosen propeller nut according to L / R motor's label
Insert the corresponding transmission shaft and propeller for the motor.



warning

Be sure to please 5.8G antenna before flying
Mounted on an aircraft

wcc Propeller



wc Propeller



Safety Precautions

1. Be far away from obstacles and people, identify whether there are unsafe factors, such as high voltage wires, vehicles and people.
2. Avoid playing it when you are tired, drink wine or be in bad spirit in case of accidents.
3. Avoid playing it when it is windy or rainy, otherwise, the obstacles of the electronic equipments will cause danger.
4. Be far away from heat sources in case of the damage of the electronic equipments or of the other components.
5. Avoid playing it alone when learning it in the early stage, we suggest you to ask the experienced pilots for help before playing it.
6. Check whether the equipment is normal before playing it and whether it has co-channel interference.
7. Avoid touching the working motor and the airscrew, avoid touching it with your hands directly.
8. Please keep the throttle rod of the remoter at the lowest point before playing it.
9. When testing or adjusting the flying machine, you can dismantle the throttle rod when it is necessary, and then equip it after finishing the adjustment in case of security accident.
10. Please check the installation instructions before equipping it and use it correctly with the components supplied, users should take on all the flying responsibilities of the model aircraft accidents caused by the components from other sources or reinstallation.

FCC STATEMENT :

This device complies with Part 15 of the FCC Rules. Operation is subject to the following two conditions:

- (1) This device may not cause harmful interference, and
- (2) This device must accept any interference received, including interference that may cause undesired operation.

Warning: Changes or modifications not expressly approved by the party responsible for compliance could void the user's authority to operate the equipment.

NOTE: This equipment has been tested and found to comply with the limits for a Class B digital device, pursuant to Part 15 of the FCC Rules. These limits are designed to provide reasonable protection against harmful interference in a residential installation. This equipment generates uses and can radiate radio frequency energy and, if not installed and used in accordance with the instructions, may cause harmful interference to radio communications. However, there is no guarantee that interference will not occur in a particular installation. If this equipment does cause harmful interference to radio or television reception, which can be determined by turning the equipment off and on, the user is encouraged to try to correct the interference by one or more of the following measures:

Reorient or relocate the receiving antenna.

Increase the separation between the equipment and receiver.

Connect the equipment into an outlet on a circuit different from that to which the receiver is connected.

Consult the dealer or an experienced radio/TV technician for help.