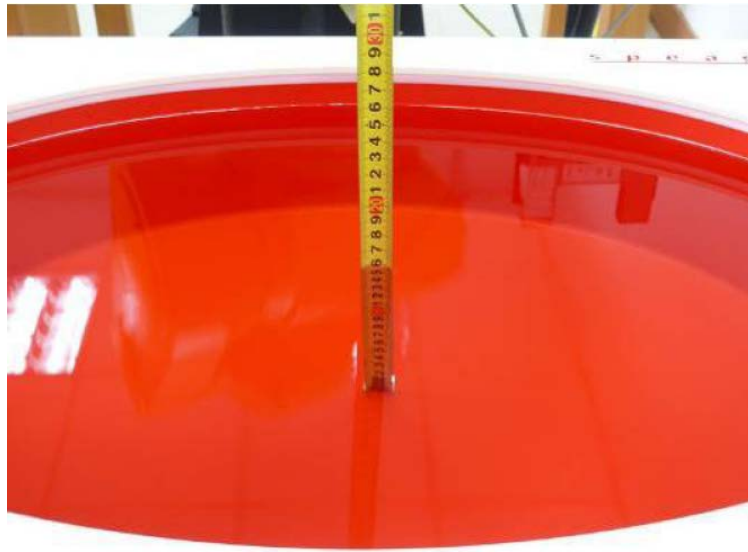
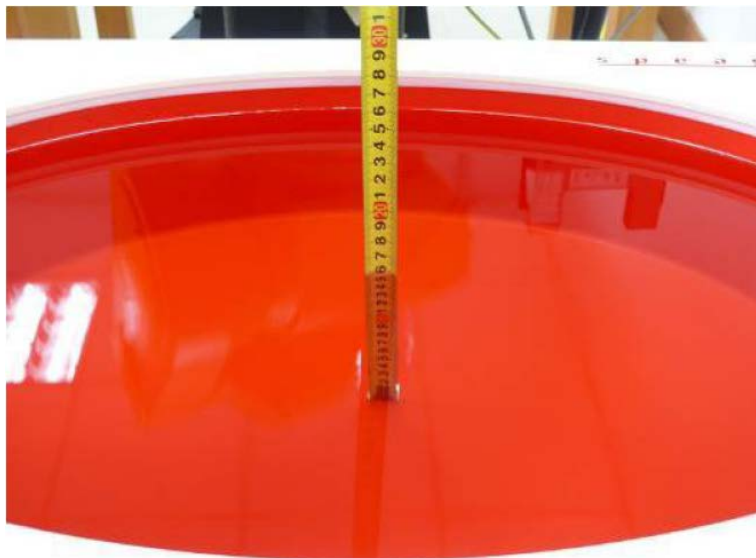


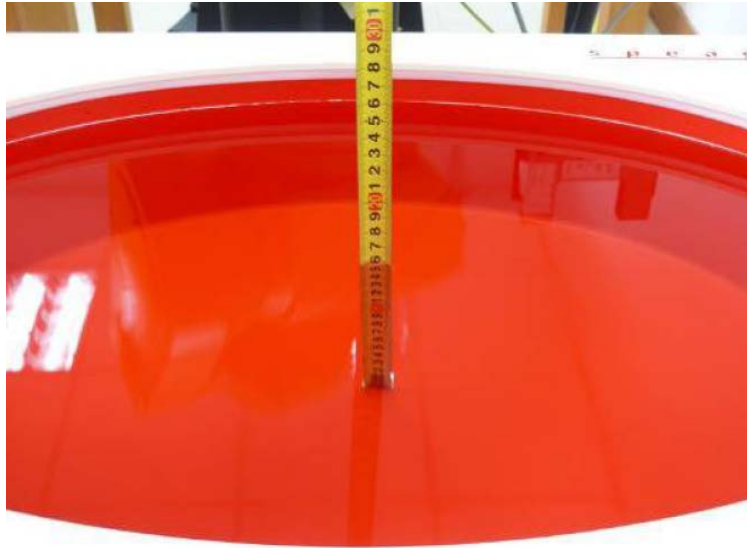
1. TEST SETUP PHOTOS



Photograph of the depth in the Body Phantom (2450MHz, 15.4cm depth)



Photograph of the depth in the Body Phantom (5200MHz, 15.3cm depth)



Photograph of the depth in the Body Phantom (5800MHz, 15.4cm depth)



Test Position 1 - Body-worn, the rear side of the EUT towards phantom (The distance was 0mm)



Test Position 4 - Body-worn, the top side of the EUT towards ground (The distance was 0mm)

2. EXTERNAL PHOTOS OF THE EUT

