

METRIX01 RF Module Installation Guide



This manual describes the installation of the METRIX01 RF module into end products. Note:

- The module is to be installed by trained service personnel only.
- The module is to be installed into approved end-products only.
- The module is to be supplied with DC voltage in the range of 2.7V to 3.6V
- The exterior of the final product must be permanently labeled with:

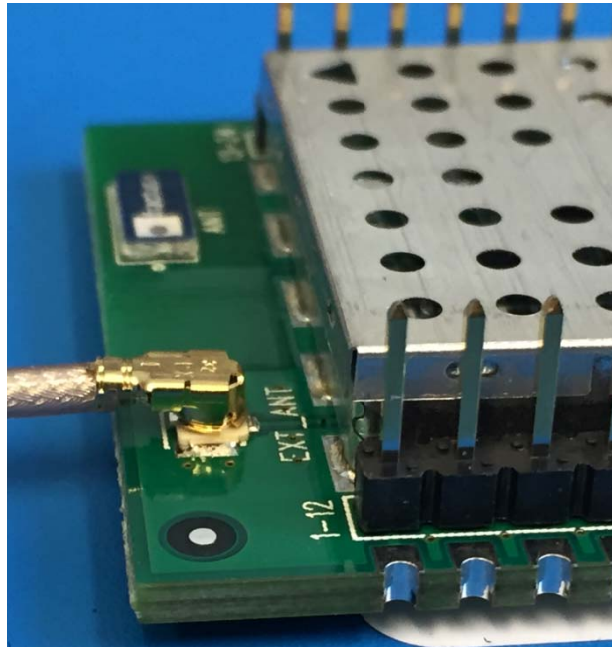
Contains: FCCID: 2AJWF-METRIX01

Contains: IC: 21890-METRIX01

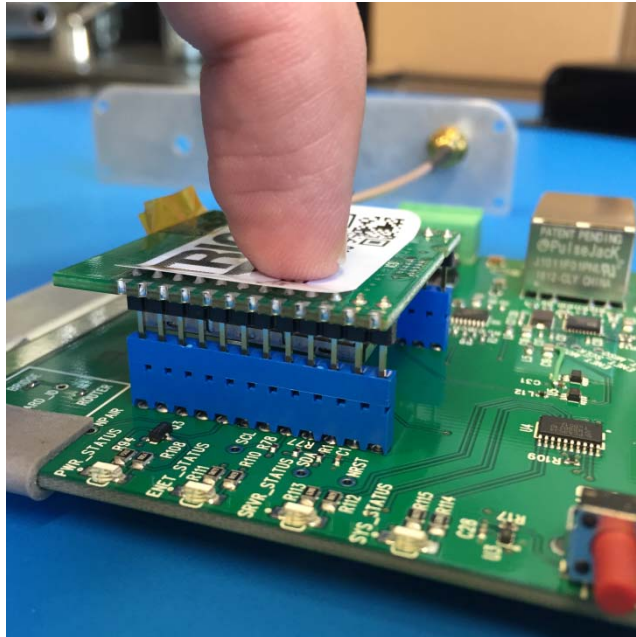
1. Using appropriate ESD precautions, remove the module from its packaging.
2. Note the orientation of the module and the location of pin1.



3. Note whether the end-product has an external antenna. If so, carefully align the coax cable with the mating plug on the module. Press firmly straight down, and ensure the connectors latch securely. If the connectors are loose, replace the antenna assembly on the end-product.



4. Align the module with the target/host PCB such that pin1 aligns with the pin1 marker on the target and the pins line up with the receiving receptacles.



5. Press the module firmly into place such that the pins are fully seated in their mating connectors.
6. Now install batteries and any other connections to the PCB. Secure the external housing and ensure the end-product label is affixed to the outside of the package in a visible location.

FCC Statement:

This device complies with Part 15 of the FCC Rules. Operation is subject to the following two conditions: (1) this device may not cause harmful interference, and (2) this device must accept any interference received, including interference that may cause undesired operation.

Changes or modifications not expressly approved by Marqmetrix for compliance could void the user's authority to operate the equipment.

Industry Canada Statement:

This device complies with Industry Canada licence-exempt RSS standard(s). Operation is subject to the following two conditions: (1) this device may not cause interference, and (2) this device must accept any interference, including interference that may cause undesired operation of the device.

Le présent appareil est conforme aux CNR d'Industrie Canada applicables aux appareils radio exempts de licence. L'exploitation est autorisée aux deux conditions suivantes : (1) l'appareil ne doit pas produire de brouillage, et (2) l'appareil doit accepter tout brouillage radioélectrique subi, même si le brouillage est susceptible d'en compromettre le fonctionnement.

RF Exposure Warning.

The antenna(s) used for this transmitter must be installed to provide a separation distance of at least 20 cm from all persons and must not be co-located or operating in conjunction with any other antenna or transmitter .