

# Diablo

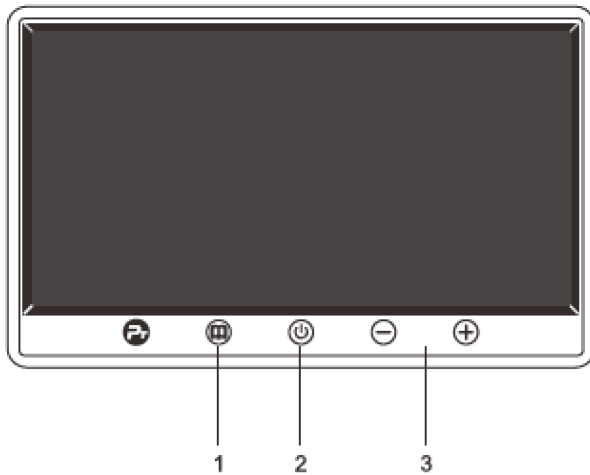


*DB-CINEMA*

User Manual For [DB-CINEMA](#) Portable Speaker

# FUNCTION

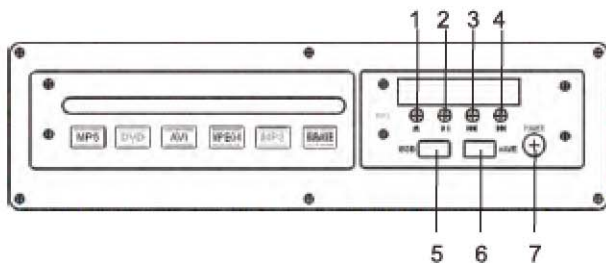
## ● DVD SCREEN



1. : PRESS THIS BUTTON TO SELECT THE PARAMETER OF SCREEN BRIGHTNESS, CONTRAST , HUE , LANGUAGE, RESET , ROTATE, DISPLAY RATIO.
2. : PRESS THIS BUTTON TO THE MP5 DISPLAY ON, PRESS AGAIN THIS BUTTON TO THE MP5 DISPLAY OFF.
3. : PRESS THIS BUTTON TO INCREASE OR REDUCE THE PARAMETER OF SCREEN BRIGHTNESS, CONTRAST , HUE , LANGUAGE, RESET , ROTATE, DISPLAY RATIO.

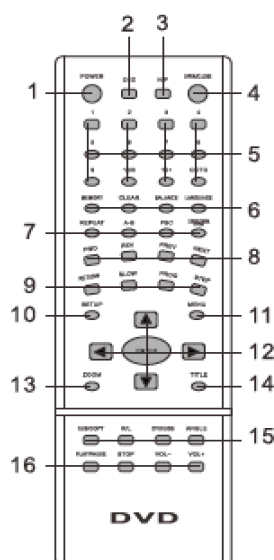
## ● DVD PANEL

## ● DVD PANEL



1. : PRESS THIS BUTTON TO ENTER DVD OPEN, PRESS AGAIN TO ENTER DVD CLOSE.
2. : PRESS THIS BUTTON TO ENTER PAUSE, PRESS AGAIN TO ENTER PLAY.
3. : PRESS THIS BUTTON TO SELECT THE NEXT CHANNEL.
4. : PRESS THIS BUTTON TO SELECT THE PREVIOUS CHANNEL.
5. USB: PUT USB INTO THE SLOT, MP3, MPEG4, MP5 PLAYABLE.
6. GAME: PUT GAME INTO THE SLOT.
7. POWER : POWER SWITCH

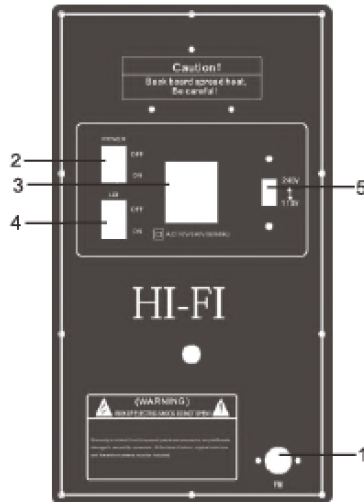
## ● DVD REMOTE



1. Power
2. Osb
3. Np
4. Open/close
5. 10/0-9 button: select the songs of 0-10.
6. Memory: press this button to memory playback
7. Repeat: press this button to repeat the playing track
8. Fwd: press this button to fast forward.
9. Return: press this button to return.
10. Setup
11. Menu
12. Enter/▶/▲/▼:press this button to select and confirm setting
13. Zoom
14. Title
15. Sub/copy: press this button to switch between the sub and copy.
16. Play/pause: press this button tp play or pause of the current screen.

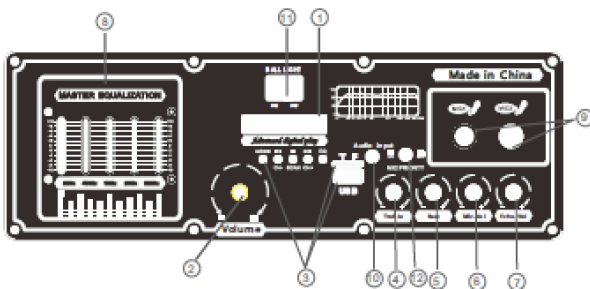
# FUNCTION

## BACK PANEL



1. THE ANTENNA FM: FM ANTENNA.
2. POWER:  
ON: SWITCH TO ON WHEN UNIT IS IN USE.  
OFF: SWITCH TO OFF WHEN UNIT IS NOT IN USE.
3. AC~110/240/50~60Hz: CONNECT TO DC POWER, PLEASE BE SURE CONNECT TO 110V/240V 50-60Hz. OUTER RANGE POWER MAY CAUSE ACCIDENT.
4. LED:  
ON: SWITCH TO ON WHEN UNIT IS IN USE.  
OFF: SWITCH TO OFF WHEN UNIT IS NOT IN USE.
5. 110V-240V:ADJUST THE VOLTAGE 110V OR 240V.

## FRONT PANEL

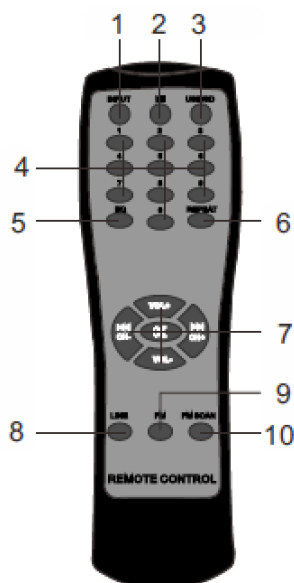


1. Advanced digital play
2. VOLUME Adjustor
3. USB/TF play control
4. Main treble volume
5. Main bass volume
6. MIC volume
7. MIC ECHO adjustor
8. Master equalization: Adjust the equalization
9. MIC1 and MIC2 input jack
10. Audio input: Connect with the audio
11. Ball light switch
12. MIC PRIORITY

The FM antenna just for FM radio receiver

The USB port only used for connect to USB flash disk, can not charge for external device.

## REMOTE



1. INPUT: INPUT SELECT USB/SD; FM; LINE; BLUETOOTH.
2. **II**: PRESS THIS BUTTON TO ENTER PAUSE, PRESS AGAIN TO ENTER PLAY.
3. USB/SD: PRESS THIS BUTTON TO SELECT THE MODE BETWEEN USB FLASH DRIVE OR SD CARD.
4. 0-9 BUTTON: KEY NUMBER FOR SELECTING THE CERTAIN TRACK FOR USB FLASH DRIVE OR SD CARD.
5. EQ: PRESS THIS BUTTON TO SELECT THE EQ MODE OF NORMAL, JAZZ, ROCK, POP, CLASS.
6. REPEAT: PRESS THIS BUTTON TO REPEAT THE PLAYING TRACK FOR USB FLASH DRIVE OR SD SARD.
7. **M**: PRESS THIS BUTTON TO MUTE THE TRACK FOR USB/SD/MMC.
8. VOL+/VOL-: PRESS THIS BUTTON TO INCREASE OR REDUCE THE MASTER VOLUME FOR USB/SD/MMC/AUX/FM.
9. CH-/CH+: PRESS THIS BUTTON TO SELECT THE PREVIOUS OR NEXT CHANNEL.
10. LINE: LINE AUX INPUT SELECT KEY.
11. FM: PRESS THIS BUTTON TO PLAY FM.
12. FM SCAN: PRESS THIS BUTTON TO SCAN FM STATIONS.

# TO ALL CUSTOMERS

## ● BLUETOOTH

### STEP 1

Please press "MODE " to let the audio signal transfer to Bluetooth condition, now the panel is showing "BLUE " and the Bluetooth icon is flashing.

### STEP 2

Open your others devices with Bluetooth function: Like cellphone, computer or others. Then it automatically begins scanning for nearby Bluetooth devices. Our speaker Bluetooth is "BT-SPEAKER".

### STEP 3

When you find the Bluetooth settings , Simply select the Bluetooth device to complete the connection.

### STEP 4

If the mobile phone can't find the Bluetooth settings, please turn off the audio systems and then repeat the above operation.

### **FCC STATEMENT :**

This device complies with Part 15 of the FCC Rules. Operation is subject to the following two conditions:

(1) This device may not cause harmful interference, and (2) This device must accept any interference received, including interference that may cause undesired operation.

Warning: Changes or modifications not expressly approved by the party responsible for compliance could void the user's authority to operate the equipment.

NOTE: This equipment has been tested and found to comply with the limits for a Class B digital device, pursuant to Part 15 of the FCC Rules. These limits are designed to provide reasonable protection against harmful interference in a residential installation. This equipment generates uses and can radiate radio frequency energy and, if not installed and used in accordance with the instructions, may cause harmful interference to radio communications. However, there is no guarantee that interference will not occur in a particular installation. If this equipment does cause harmful interference to radio or television reception, which can be determined by turning the equipment off and on, the user is encouraged to try to correct the interference by one or more of the following measures:

- Reorient or relocate the receiving antenna.

- Increase the separation between the equipment and receiver.

- Connect the equipment into an outlet on a circuit different from that to which the receiver is connected.

- Consult the dealer or an experienced radio/TV technician for help.

### **FCC Radiation Exposure Statement:**

This equipment complies with FCC radiation exposure limits set forth for an uncontrolled environment. This equipment should be installed and operated with minimum distance 20cm between the radiator & your body