

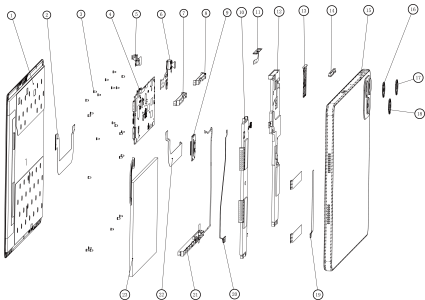
itel P10003L

VistaTab 30

User Manual

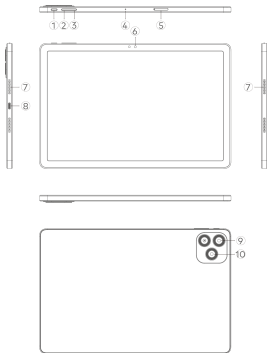
Tablet

Exploded diagram specification



1	TLCM	2	TLCM FPC
3	SCREW PB1.4*L2.5*D2.5*T0.5	4	PCBA MAIN
5	FRONT CAMERA	6	REAR CAMERA
7	GPS WIFI BT ANT FRAME	8	DRX ANT FRAME
9	TYPE C PCBA	10	RIGHT SPK BOX
11	SIDE KEY FPC	12	LEFT SPK BOX
13	Card TRAY	14	SIDE KEY
15	MID HSG ASM	16	AI LENS
17	CAM LENS	18	REAR FLAS LENS
19	BATTERY REMOVABLE TAPE	20	MAIN ANT FPC
21	PRX ANT FRAME	22	MAIN PCB TO TYPE C PCB FPC
23	BATTERY		

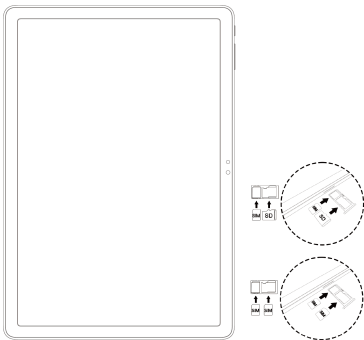
Know your Tablet



- | | |
|------------------|----------------------|
| 1. Power key | 6. Front Camera |
| 2. Volume + key | 7. Speaker |
| 3. Volume - key | 8. TYPE-C/Audio Jack |
| 4. MIC | 9. Rear Camera |
| 5. SIM Card Slot | 10. Rear Flash |

SIM/SD card installation

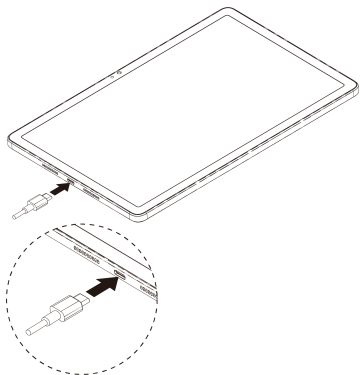
1. Power off your tablet.
2. Refer to the following picture for SIM/SD card installation.



Charging the Tablet

You can charge your tablet with a charger or by connecting it to a computer using a USB cable (comes with the tablet).

1. Please plug in the correct orientation.
2. Use only itel chargers and cables. Other chargers or cables may damage the tablet and invalidate its warranty.



FCC Caution

Labelling requirements.

This device complies with Part 15 of the FCC Rules. Operation is subject to the following two conditions:

- (1) This device may not cause harmful interference.
- (2) This device must accept any interference received, including interference that may cause undesired operation.

Information to user.

Any changes or modifications not expressly approved by the party responsible for compliance could void the user's authority to operate the device.

Information to the user.

Note: This device has been tested and found to comply with the limits for a Class B digital device, pursuant to part 15 of the FCC Rules. These limits are designed to provide reasonable protection against harmful interference in a residential installation. This device generates, uses and may radiate radio frequency energy and, if not installed and used in accordance with the instructions, may cause harmful interference to radio communications. However, there is no guarantee that interference will not occur in a particular installation. If this device does cause harmful interference to radio or television reception (able to be determined by turning the device off and on), the user is encouraged to try to correct the interference by one or more of the following measures:

- Reorient or relocate the receiving antenna.
- Increase the separation between the device and receiver.
- Connect the device to an outlet on a circuit different from that to which the receiver is connected.
- Consult the dealer or an experienced radio/TV technician for help.

Specific Absorption Rate (SAR) information:

This tablet phone meets the government's requirements for exposure to radio waves. The guidelines are based on standards developed by independent scientific organizations through periodic and thorough evaluation of scientific studies. The standards include a substantial safety margin designed to assure the safety of all persons regardless of age or health.

FCC RF Exposure Information and Statement. The SAR limit of USA

(FCC) is 1.6 W/kg averaged over one gram of tissue. Device types: P10003L (FCC ID: 2AJMN-P10003L) has also been tested against this SAR limit. The highest SAR value reported under this standard during product certification for use when properly worn on the body is 0.828 W/kg.

Operating System: Android™
Android is a trademark of Google LLC.

