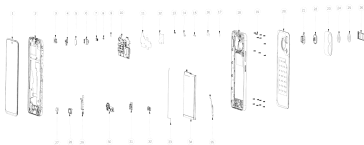


User Manual

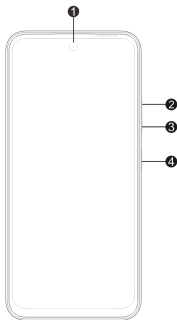
Exploded diagram specification



1	LCM	2	FRONT SHELL ASSEMBLY
3	EARPIECE	4	FRONT CAMERA
5	REAR CAMERA CONDUCTIVE SPONGE	6	REAR CAMERA
7	REAR AUXILIARY CAMERA	8	LIGHT SENSITIVE RUBBER SLEEVE
9	SIM CARDBOARD CONDUCTIVE SPONGE	10	PCBA

11	EMMC COVER HEAT DISSIPATION FILM	12	BB COVER COPPER FOIL
13	CB1.6_SHELL SCREWS L2.5	14	FRONT CAMERA GROUNDING CONDUCTIVE SPONGE
15	FRONT FLASHING MOTHERBOARD SUPPORT FOAM	16	FRONT FLASHING MOTHERBOARD SUPPORT FOAM MYLAR
17	REAR AUXILIARY CAMERA CONDUCTIVE CLOTH	18	MIDDLE FRAME COMPONENT
19	CB1.6_SHELL SCREW L3.5	20	BATTERY COVER COMPOSITE BOARD
21	MAIN CAMERA BARRDL ASSEMBLY	22	SUB CAMERA BARRDL ASSEMBLY
23	BATTERY COVER DECORATION	24	REAR MAIN LENS
25	REAR AUXILIARY LENS	26	CATO
27	MOTOR	28	HORN
29	SIDE KEY FPC	30	SMALL BOARD
31	EARPHONE SILICONE CASE	32	USB SILICONE SLEEVE
33	COPPER SHAFT CABLE	34	BATTERY
35	LATERAL FINGERPRINT		

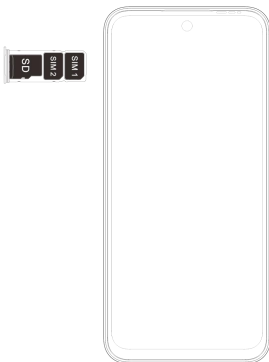
Know your phone



1. Front camera
2. Volume + button
3. Volume - button
4. Power button & side fingerprint sensor

SIM/SD card installation

1. Power off your phone.
2. Refer to the following picture for SIM/SD card installation.



Charging the phone

You can charge your phone with a charger or by connecting it to a computer using a USB cable (comes with the phone).

Use only **itel** chargers and cables. Other chargers or

cables may damage the phone and invalidate its warranty.



FCC Caution

Labelling requirements.

This device complies with Part 15 of the FCC Rules. Operation is subject to the following two conditions:

- (1) This device may not cause harmful interference.
- (2) This device must accept any interference received, including interference that may cause undesired operation.

Information to user.

Any changes or modifications not expressly approved by the party responsible for compliance could void the user's authority to operate the device.

Information to the user.

Note: This device has been tested and found to comply with the limits for a Class B digital device, pursuant to part 15 of the FCC Rules. These limits are designed to provide reasonable protection against harmful interference in a residential installation. This device generates, uses and may radiate radio frequency energy and, if not installed and used in accordance with the instructions, may cause harmful interference to radio communications. However, there is no guarantee that interference will not occur in a particular installation. If this device does cause harmful interference to radio or television reception (able to be determined by turning the device off and on), the user is encouraged to try to correct the interference by one or more of the following measures:

- Reorient or relocate the receiving antenna.
- Increase the separation between the device and receiver.
- Connect the device to an outlet on a circuit different from that to which the receiver is connected.
- Consult the dealer or an experienced radio/TV technician for help.

Specific Absorption Rate (SAR) information:

This mobile phone meets the government's requirements for exposure to radio waves. The guidelines are based on standards developed by independent scientific organizations through periodic and thorough evaluation of scientific studies. The standards include a substantial safety margin designed to assure the safety of all persons regardless of age or health.

FCC RF Exposure Information and Statement. The SAR limit of USA (FCC) is 1.6 W/kg averaged over one gram of tissue. Device types: A671L (FCC ID: 2AJMN-A671L) has also been tested against this SAR limit. The highest SAR value reported under this standard during product certification for use at the ear is 1.02 W/kg and when properly worn on the body is 0.45 W/kg.

Body-worn Operation

This device was tested for typical body-worn operations. To comply with RF exposure requirements, a minimum separation distance of 10mm must be maintained between the user's body and the handset, including the antenna. Third-party belt-clips, holsters, and similar accessories used by this device should not contain any metallic components. Body-worn accessories that do not meet these requirements may not comply with RF exposure requirements and should be avoided. Use only the supplied or an approved antenna.

Operating System: Android™ 14(Go edition)

Android is a trademark of Google LLC.

