

# Quickstart Guide

01

## Setting Up



01

To get started, download and install the Molekule app to your iPhone.

02

Plug in Molekule and follow the steps on the screen. To pair the app make sure you are in proximity to the Molekule Air Purifier.

04

Select your preferences and fan speed.

Done!

NOTE

Reasons to connect to WIFI... and download app. ...

03

## Initial Use

As any product, Molekule is exposed to odors and contaminants during manufacturing, warehousing, and shipping of the device. Please allow the unit to run for 24 hours to break down any contaminants and reach its full effectiveness.

## Sweet Scent of Clean Air

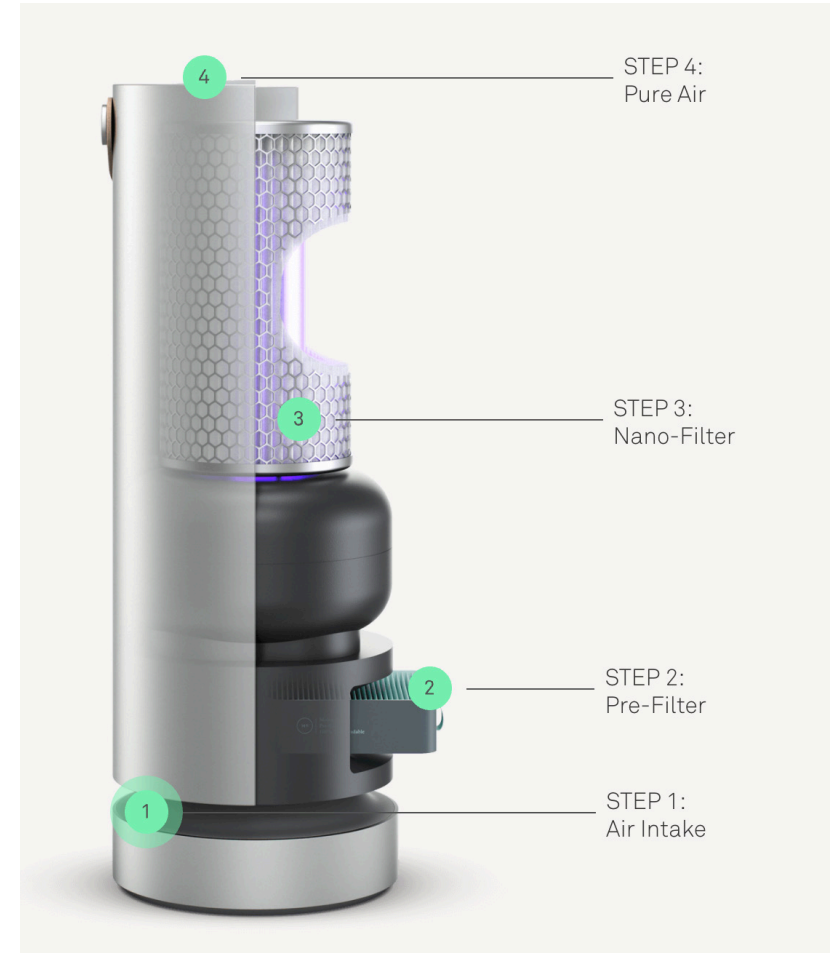
Explanation on why not to worry about the scent. NEEDS COPY...

## How Molekule Works

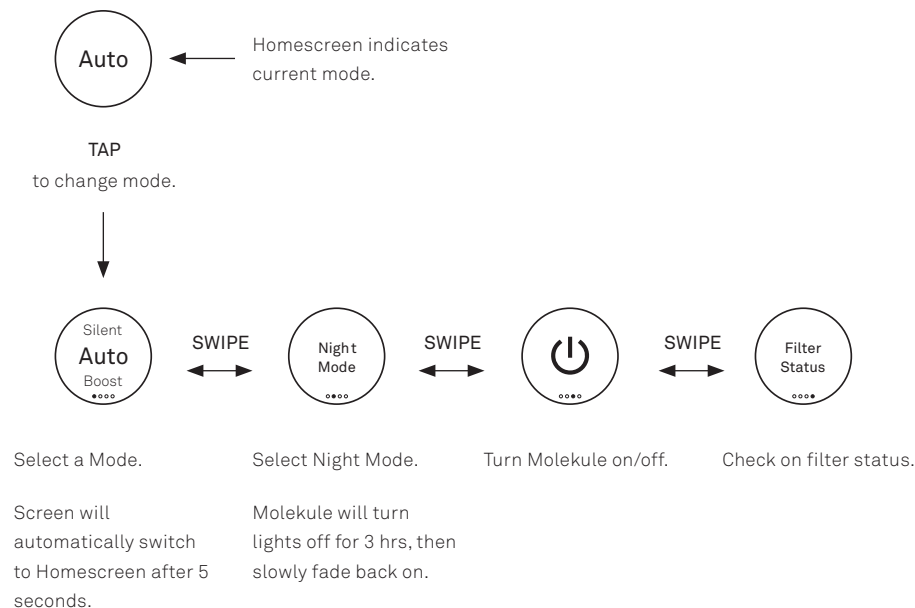
PECO works when a nanoparticle-coated filter is activated by light generating a reaction on the surface of the filter, breaking down pollutants including allergens, bacteria, viruses, mold and VOCs. Molekule has four worldwide exclusive patents to this technology and one additional patent pending.

1 - Molekule takes in the surrounding air from every angle.

2...



## Device Menu



## Modes

- Auto**

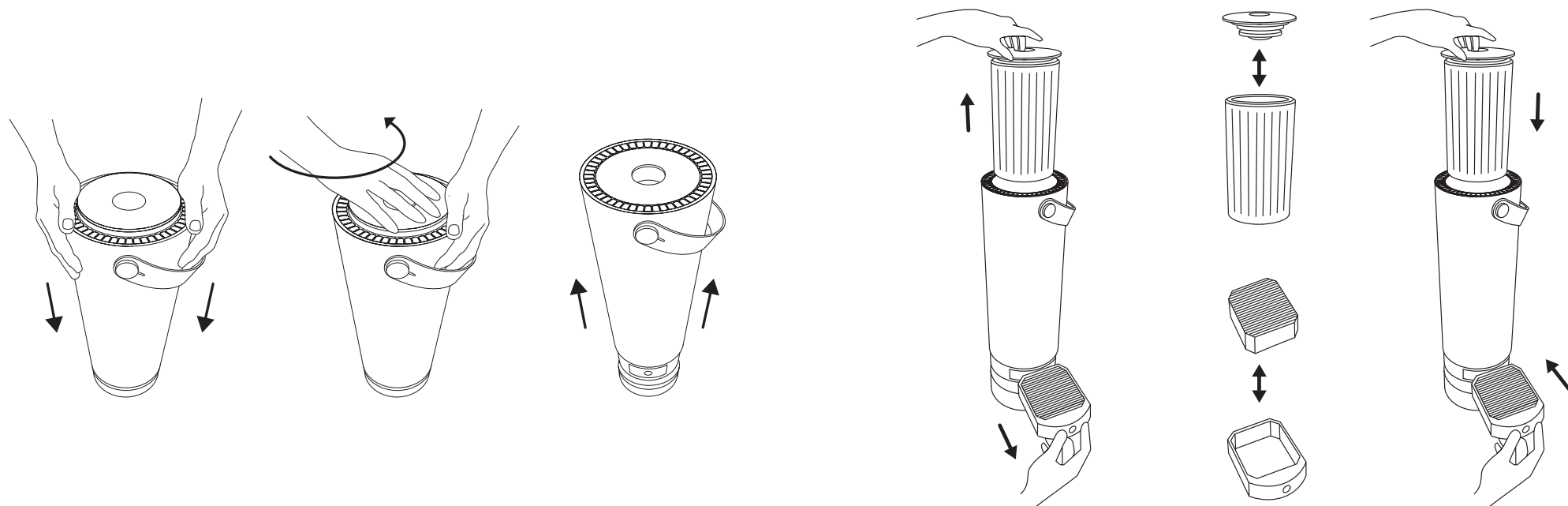
The device automatically selects speed and time respective to your room size. In this mode, Molekule will maintain the air to its best quality by being as quiet and energy efficient as possible.
- Boost**

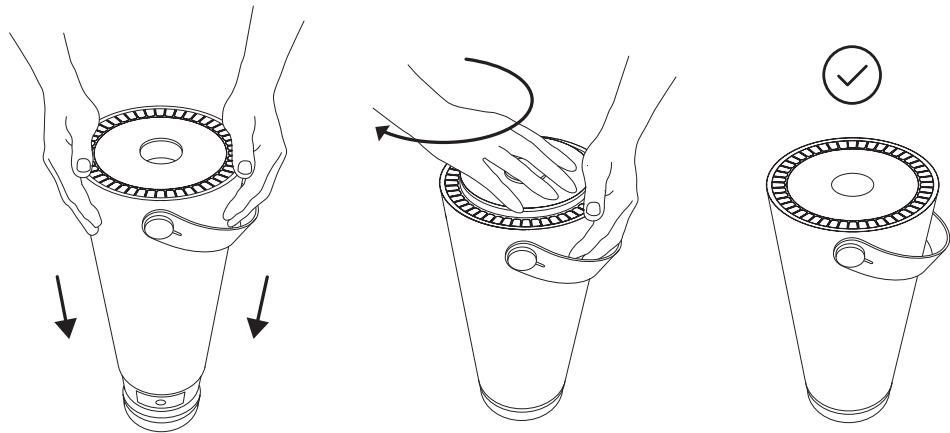
In Boost mode the device runs at its maximum speed. Use this mode when you're in need of a strong clean. For example after dusting and cleaning the house with detergents.
- Silent**

Molekule runs silently. While the speed of air flowing through the device is reduced, the device still cleans the air effectively.
- Night Mode**

Night Mode turns off the light of the device for people that are sensitive to light while sleeping. Once selected, Night Mode will turn off all lights for 3hrs to let you fall to sleep. Then, the lights will fade back on for the device to be effective for the remainder of the night.

## Filter Replacement





01

## Limited Warranty Information

Do we need OTA Conscent?

05

## Copyright & Patent Statements

## Safety Precautions & Warnings

- NEED VISUAL: “Cigar cutter” effect resulting from one person having a finger in the pre-filter carrier while a second person operates the mechanism. Could be as simple as a “change filters with one person” warning.

- NEED VISUAL: do not stick fingers in the display opening when closing the device.

----

- Do not Cover Vents: Putting anything on top of the device (slightly different than dropping things INTO the device. Best example would be something flat like a book covering the air vents)

- Tilting over or dropping the entire device.

- Dropping foreign objects or liquids into the device

- Do not place objects on top of the device

- Make sure the cable is fully inserted into cable release opening to ensure stable standing of the device and prevent tipping.

- For most secure standing of the device, use on stable, flat floor surfaces.

- Do not alter, clean or tinker with Pre-Filter or Nano-Filter

## FCC Statement

This device complies with part 15 of the FCC Rules. Operation is subject to the following two conditions: (1) This device may not cause harmful interference, and (2) this device must accept any interference received, including interference that may cause undesired operation. NOTE: This equipment has been tested and found to comply with the limits for a Class B digital device, pursuant to part 15 of the FCC Rules. These limits are designed to provide reasonable protection against harmful interference in a residential installation. This equipment generates, uses and can radiate radio frequency energy and, if not installed and used in accordance with the instructions, may cause harmful interference to radio communications. However, there is no guarantee that interference will not occur in a particular installation. If this equipment does cause harmful interference to radio or television reception, which can be determined by turning the equipment off and on, the user is encouraged to try to correct the interference by one or more of the following measures:

\_ Reorient or relocate the receiving antenna.

\_ Increase the separation between the equipment and receiver.

\_ Connect the equipment into an outlet on a circuit different from that to which the receiver is connected.

\_ Consult the dealer or an experienced radio/TV technician for help.

Changes or modifications not expressly approved by the party responsible for compliance could void the user's authority to operate the equipment.

Responsible party: Molekule Inc. 3802 Spectrum Blvd. Suite 143 Tampa, FL 33612 Phone Number: +1 (855) 999-9069



01

Happy

05

Unhappy



## Need More Help?

For more information go to: [molekule.com/FAQ](https://molekule.com/FAQ)

Or reach out to us at [help@molekule.com](mailto:help@molekule.com)

**Please Recycle**

