

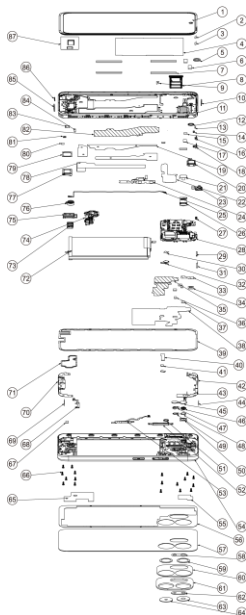
**Infinix**

**SMART 9**

**X6532 User Manual  
(D&E&I&J&N&O)**



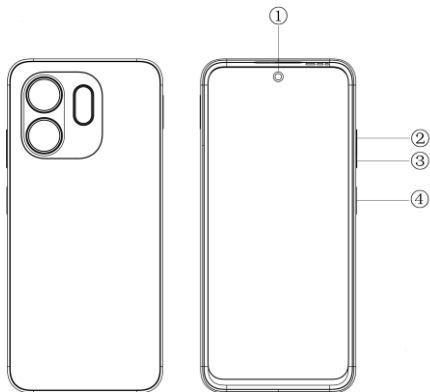
# Exploded diagram specification



1	TP	2	FRONT FLASH BLACKOUT MYRA
3	LIGHT BLACKOUT MYRA	4	HEAT SINK
5	SEALING FOAM	6	CONDUCTIVE FOAM 1
7	CONDUCTIVE FOAM 2	8	SIM CARD
9	SEALING SILICONE SHEET	10	SEAL SILICONE SLEEVE
11	FACE SHELL	12	FRONT DUST FOAM
13	BACK ADHESIVE	14	BACK ADHESIVE
15	SHIELD CONDUCTIVE SPONGE A	16	FRONT FLASH HOOD
17	GROUNDING FOAM	18	LIGHT SENSING GUIDE
19	BATTERY ADHESIVE 1	20	FPC HANDSET SPEAKER
21	GROUNDING COPPER FOIL	22	SHIELD SHIELD COPPER FOIL
23	FRONT SHOT	24	SIDE KEY FPC
25	COAXIAL LINE	26	REAR SHOT
27	LIGHT SENSITIVE SILICONE CASE	28	MOTHERBOARD
29	WATERPROOF SUPPORT FOAM	30	GROUNDING CONDUCTIVE CLOTH
31	WATERPROOF FILM	32	BACK CAMERA
33	GROUNDING COPPER FOIL	34	PRE-COMPRESSION FOAM
35	SHIELD SHIELD COPPER FOIL	36	GROUNDING SPONGE 1
37	GROUNDING SPONGE 2	38	SINGLE HEAT SINK INSIDE
39	WATERPROOF SEALING FOAM	40	COMPACT FOAM
41	COMPACT FOAM	42	ANT1 FPC
43	WIFI ANTENNA FPC	44	UPPER SPEAKER AIR FILTER
45	REAR FLASHING FPC	46	REAR FLASH LAMP SHADE
47	FLASH LAMP SHADE	48	REAR FLASH COVER BACK ADHESIVE
49	FLASH COVER BACK ADHESIVE	50	MAIN SHOT SEALING FOAM
51	AUXILIARY SEALING FOAM	52	SIDE KEY COMPONENTS
53	SIDE FINGERPRINT MODULE	54	MIDDLE FRAME
55	UPPER HORN HEAT SINK	56	BATTERY COVER BACKED WITH ADHESIVE
57	BATTERY COVER	58	FLASH LENS BACK ADHESIVE
59	REAR LENS BACK ADHESIVE	60	SEALING ADHENSIVE
61	CAMERA TRIM	62	PHOTONIC FLASH LENS
63	MAIN LENS	64	AUXILIARY LENS
65	LOWER HORN HEAT SINK	66	SCREWS
67	HORN CONDUCTIVE FOAM	68	LOWER SPEAKER FPC
69	LOWER SPEAKER AIR FILTER	70	ANTO DIVERSITY ANTENNA FPC
71	SEALING FOAM	72	BATTERY

73	TYPE-C SEALED SILICONE SLEEVE	74	SMALL BOARD
75	SEAL SILICONE SLEEVE	76	MOTOR
77	SHRAPNEL SPEAKER	78	BATTERY IS EASY TO GLUE
79	FRONT HORN CAVITY SEAL FOAM	80	USB GROUND CONDUCTIVE CLOTH
81	MIC SEALING FOAM	82	SCREEN FPC CONDUCTIVE ADHESIVE
83	HEADSET SEAT MYRA	84	FPC BACK ADHESIVE
85	SEAL SILICONE SLEEVE	86	SEALED SILICONE SLEEVE
87	SCREEN SHIELDED COPPER FOIL		

# Know your phone

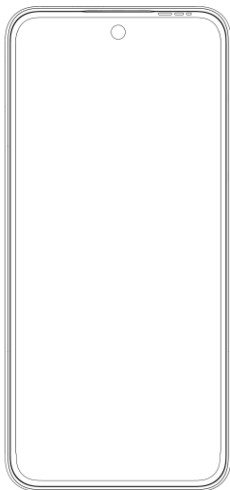
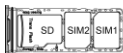


1. Front camera
2. Volume + button
3. Volume - button
4. Power button & side fingerprint sensor

## **SIM/SD card installation**

1. Power off your phone.
2. Refer to the following picture for SIM/SD card

installation.

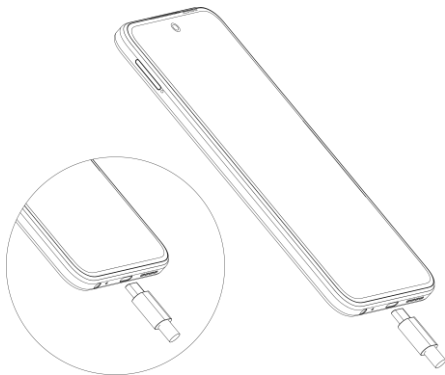


## Charging the phone

You can charge your phone with a charger or by connecting it to a computer using a USB cable (comes

with the phone).

Use only Infinix chargers and cables. Other chargers or cables may damage the phone and invalidate its warranty.



## FCC Caution

1. This device complies with Part 15 of the FCC Rules. Operation is subject to the following two conditions:

- (1) This device may not cause harmful interference.
- (2) This device must accept any interference received, including interference that may cause undesired operation.



2. Changes or modifications not expressly approved by the party responsible for compliance could void the user's authority to operate the equipment.

### **Information to the user.**

Note: This equipment has been tested and found to comply with the limits for a Class B digital device, pursuant to part 15 of the FCC Rules. These limits are designed to provide reasonable protection against harmful interference in a residential installation. This equipment generates uses and can radiate radio frequency energy and, if not installed and used in accordance with the instructions, may cause harmful interference to radio communications. However, there is no guarantee that interference will not occur in a particular installation. If this equipment does cause harmful interference to radio or television reception, which can be determined by turning the equipment off and on, the user is encouraged to try to correct the interference by one or more of the following measures:

- Reorient or relocate the receiving antenna.
- Increase the separation between the equipment and receiver.
- Connect the equipment into an outlet on a circuit different from that to which the receiver is connected.
- Consult the dealer or an experienced radio/TV technician for help.

### **Specific Absorption Rate (SAR) information:**

This mobile phone meets the government's requirements for exposure to radio waves. The guidelines are based on standards that were developed by independent scientific organizations through periodic and thorough evaluation of scientific studies. The standards include a substantial safety margin designed to assure the safety of all persons regardless of age or health.

FCC RF Exposure Information and Statement The SAR limit of USA (FCC) is 1.6 W/kg averaged over one gram of tissue. Device types: X6532 (FCC ID: 2A1ZN-X6532) has also been tested against this SAR limit. The highest SAR value reported under this standard during product certification for use at the ear is 1.156 W/kg and when properly worn on the body is 0.670W/kg.

### **Body-worn Operation**

This device was tested for typical body-worn operations. To comply with RF exposure requirements, a minimum separation distance of 1.0cm must be maintained between the user's body and the handset, including the antenna. Third-party belt-clips, holsters, and similar accessories used by this device should not contain any

metallic components. Body-worn accessories that do not meet these requirements may not comply with RF exposure requirements and should be avoided. Use only the supplied or an approved antenna.

For DTS patents, see <http://patents.dts.com>. Manufactured under license from DTS Licensing Limited. DTS, the Symbol, & DTS and the Symbol together are registered trademarks or trademarks of DTS, Inc. in the United States and/or other countries. © DTS, Inc. All Rights Reserved.



Operating System: Android™  
Android is a trademark of Google LLC.