



FCC Test Report


Application Purpose : Original grant
Applicant Name: : INFINIX MOBILITY LIMITED
FCC ID : 2AIZN-X556
Equipment Type : Mobile phone
Model Name : X556
Report Number : FCC16083919A-7
Standard(S) : FCC Part 15 Subpart E
Date Of Receipt : August 19, 2016
Date Of Issue : September 29, 2016

Test By : 

(Daisy Qin)

Reviewed By : 

(Sol Qin)

Authorized by : 

(Michal Ling)

Prepared by :

QTC Certification & Testing Co., Ltd.

2nd Floor,B1 Buiding,Fengyeyuan Industrial Plant,,Liuxian
2st.Road,Xin'an Street,Bao'an District,,Shenzhen,
518000China.

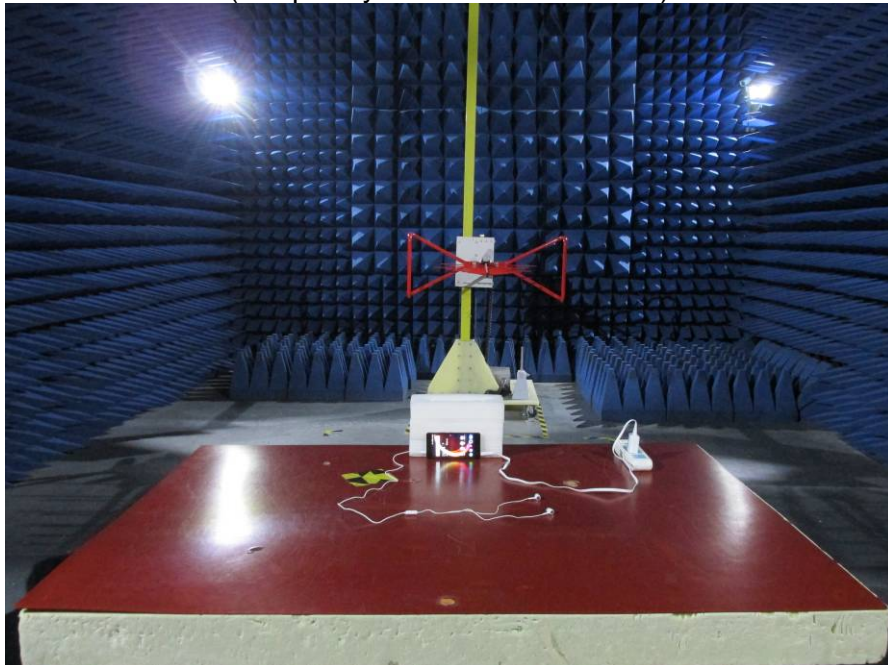
REPORT REVISE RECORD

Report Version	Revise Time	Issued Date	Valid Version	Notes
V1.0	/	September 29, 2016	Valid	Original Report

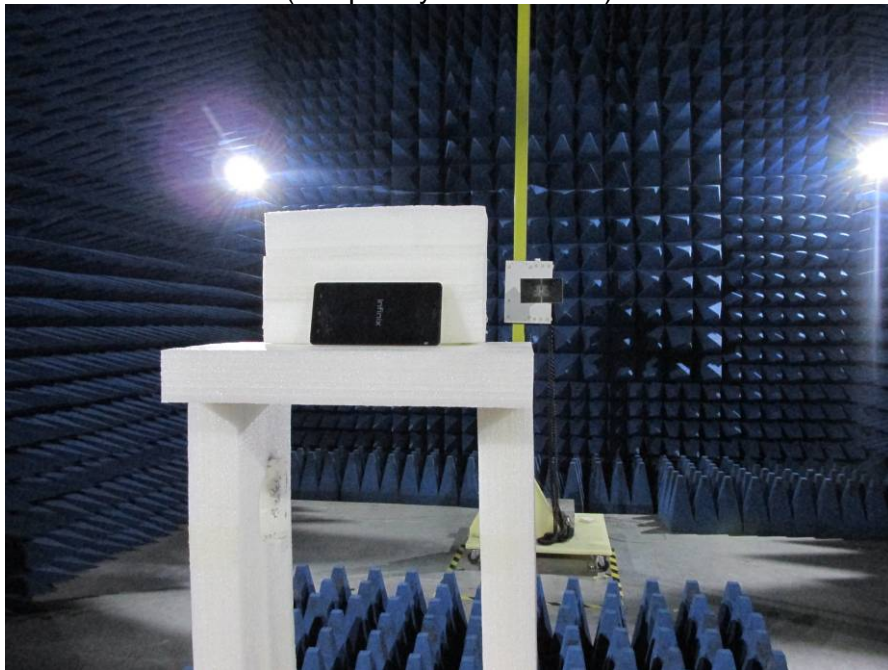
Table of Contents	Page
9. DYNAMIC FREQUENCY SELECTION (DFS)	4
10. EUT TEST PHOTO	5
11. PHOTOGRAPHS OF EUT	7

9. DYNAMIC FREQUENCY SELECTION (DFS)

PLEASE REFER TO: FCC16083919A-8 DFS

10. EUT TEST PHOTO**CONDUCTED EMISSION TEST****RADIATED EMISSION TEST**
(Frequency from 30MHz to 1GHz)

RADIATED EMISSION TEST (Frequency above 1GHz)



RF TEST

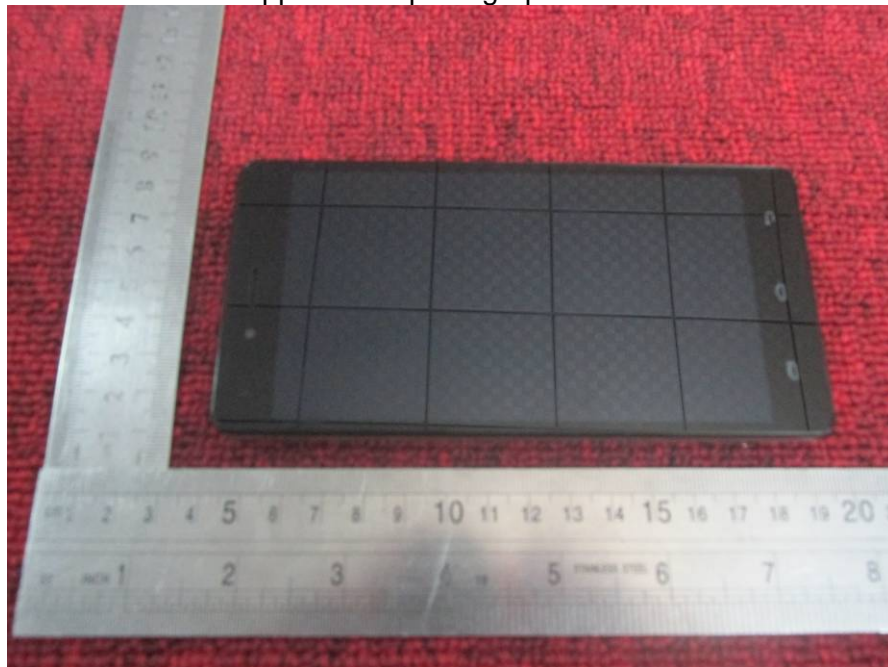


11. PHOTOGRAPHS OF EUT

Appearance photograph of EUT



Appearance photograph of EUT



Appearance photograph of EUT



Appearance photograph of EUT



Appearance photograph of EUT



Appearance photograph of EUT



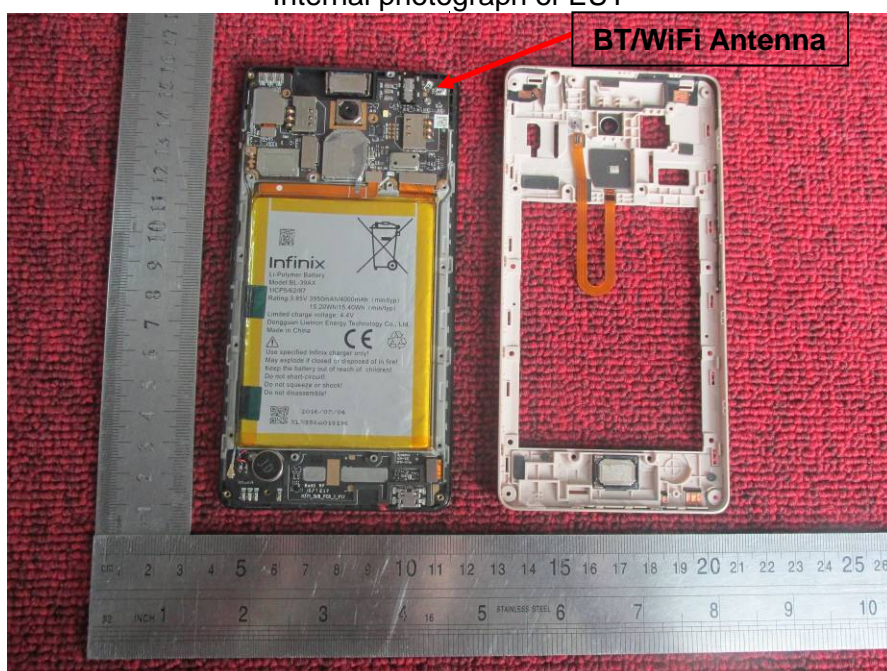
Appearance photograph of EUT



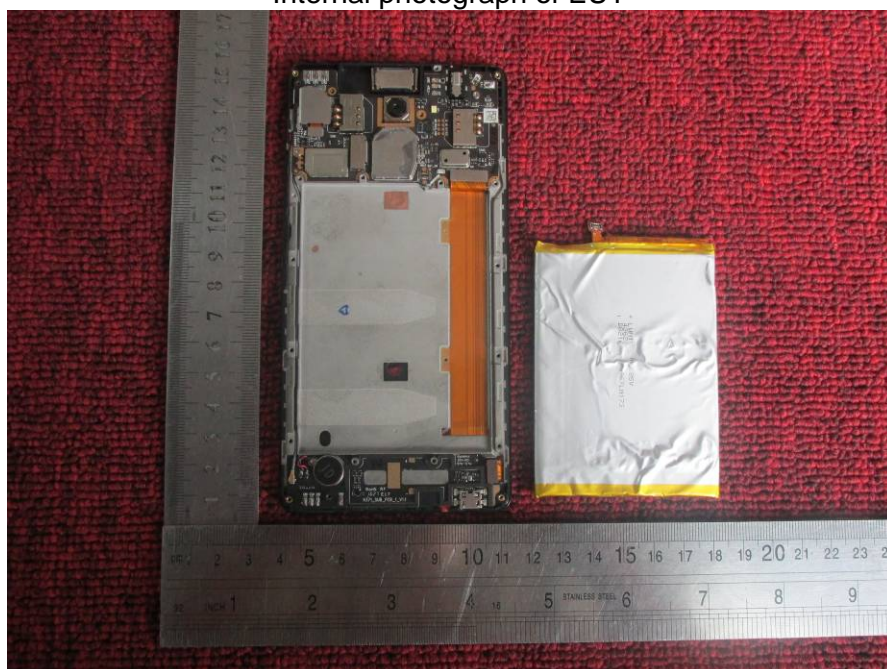
Appearance photograph of EUT



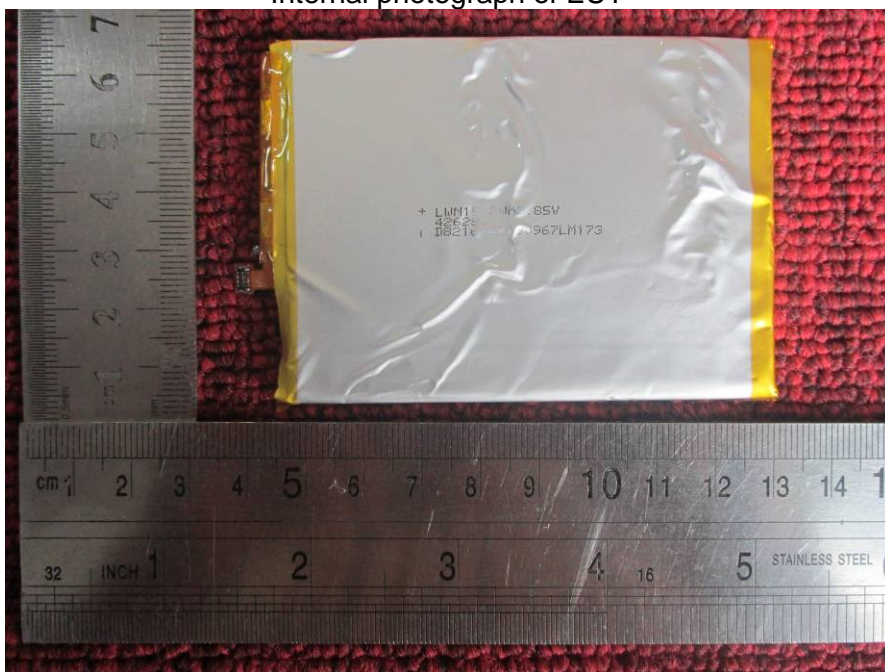
Internal photograph of EUT



Internal photograph of EUT



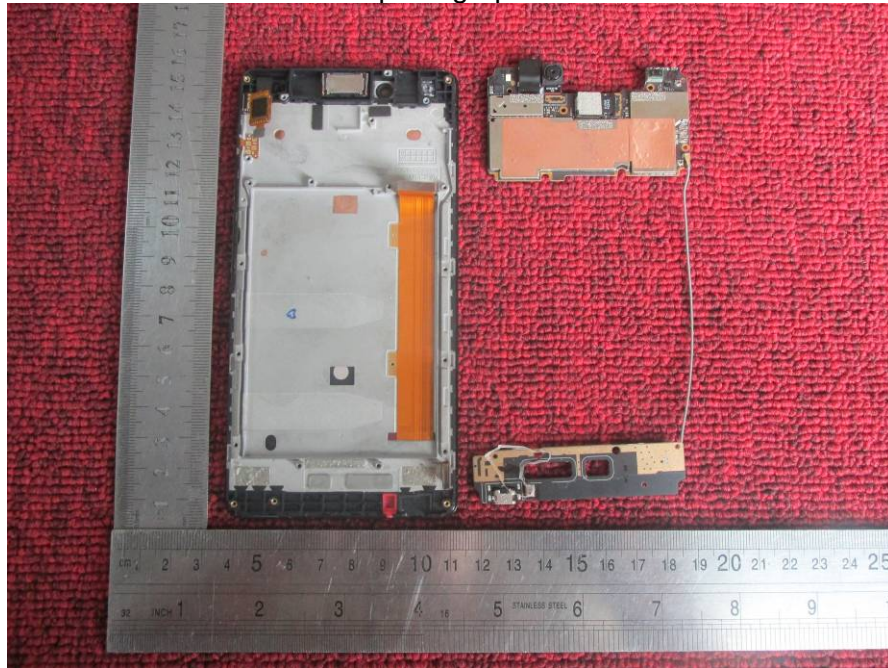
Internal photograph of EUT



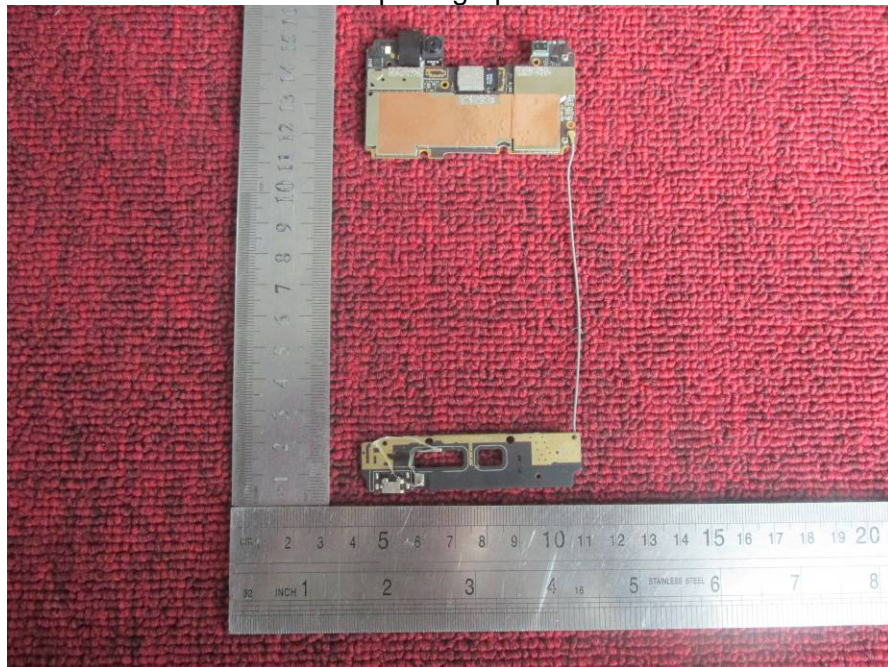
Internal photograph of EUT



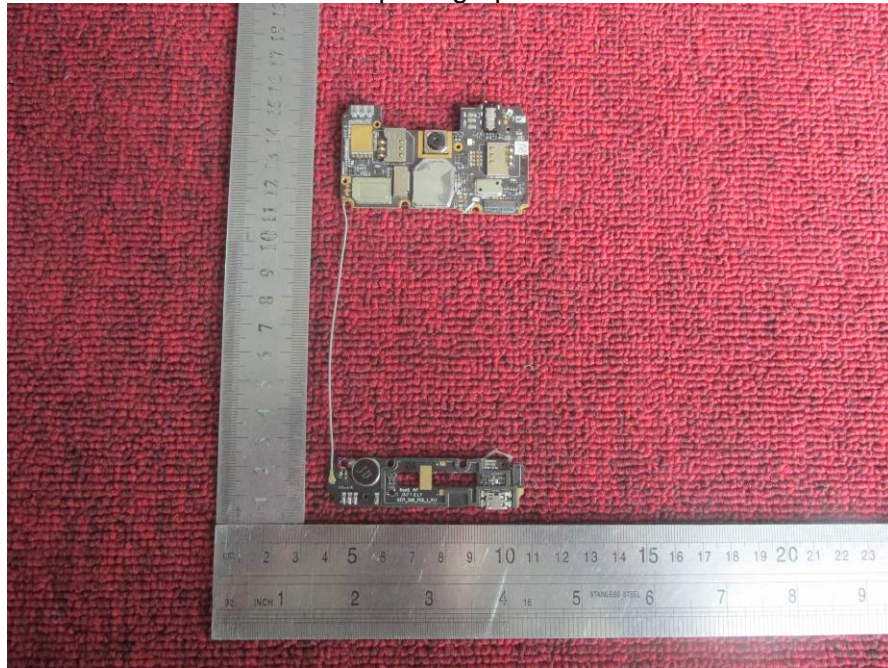
Internal photograph of EUT



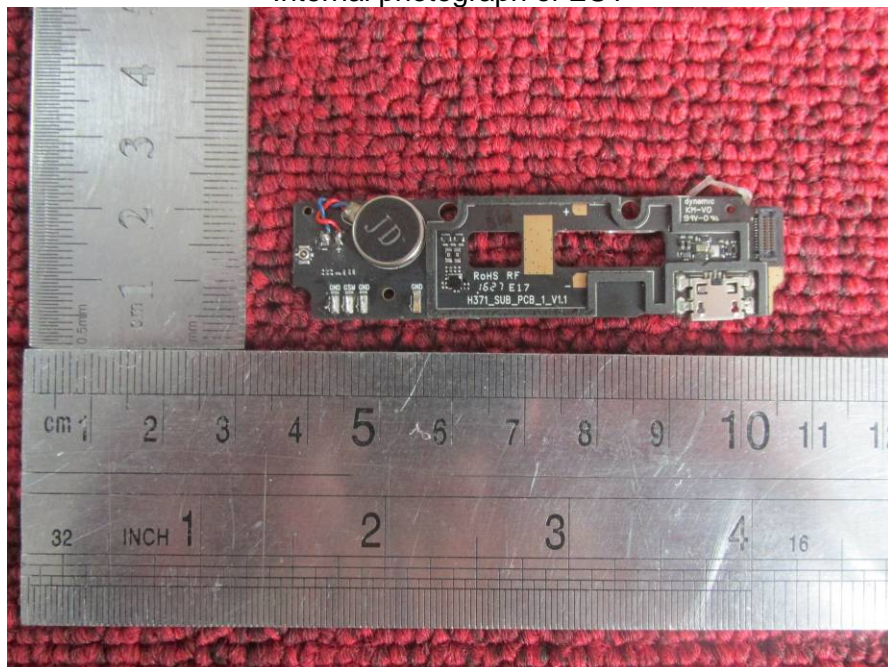
Internal photograph of EUT



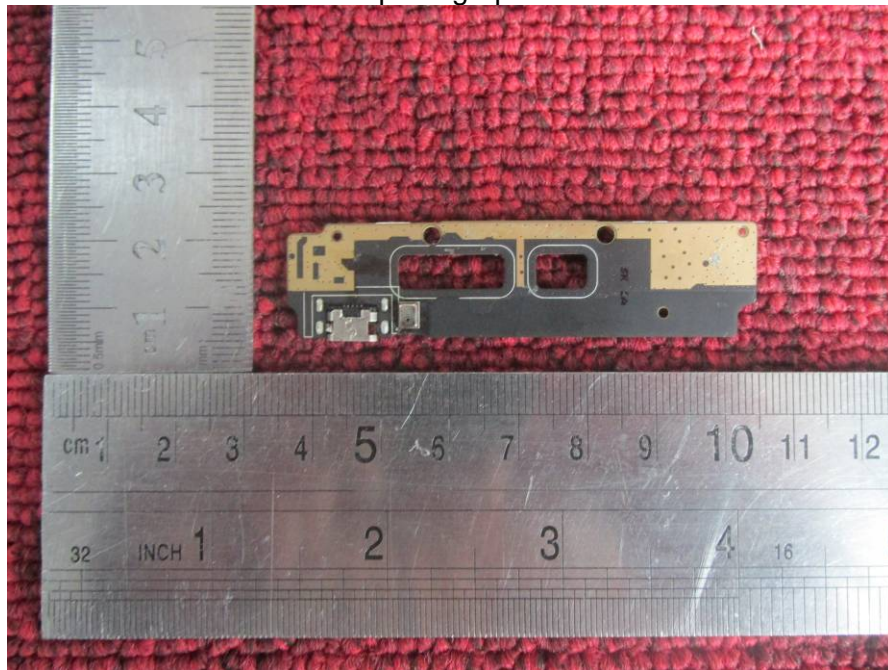
Internal photograph of EUT



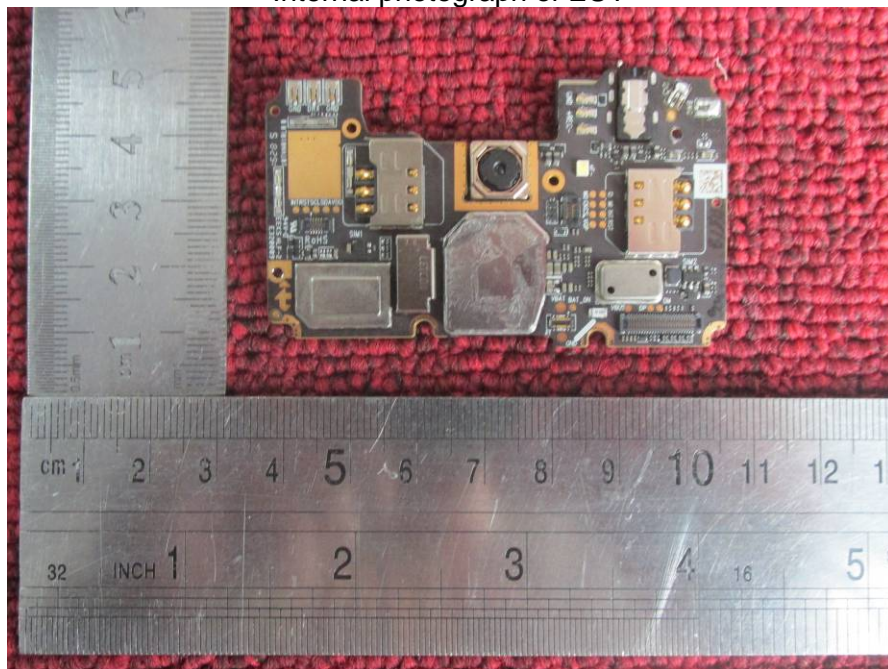
Internal photograph of EUT



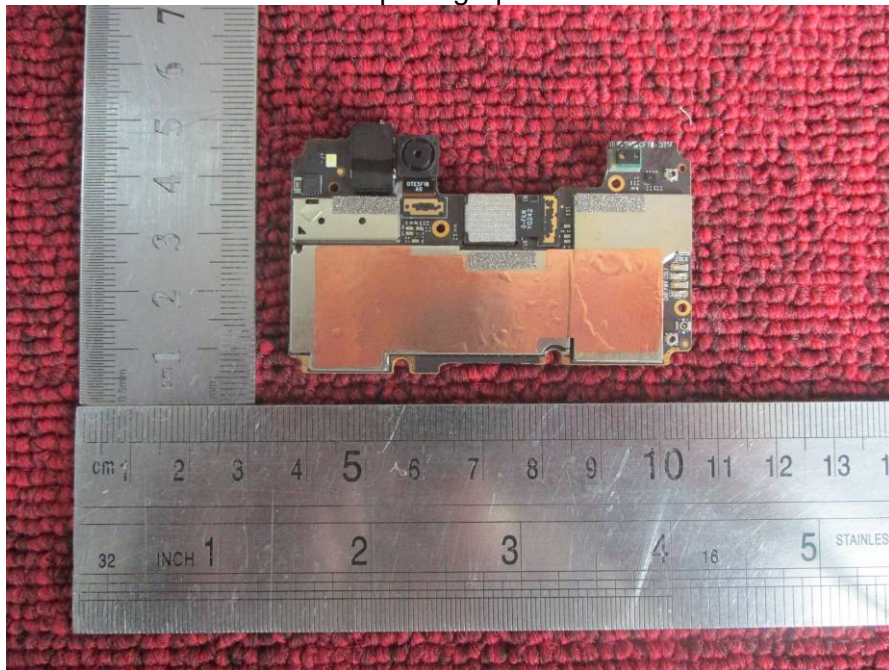
Internal photograph of EUT



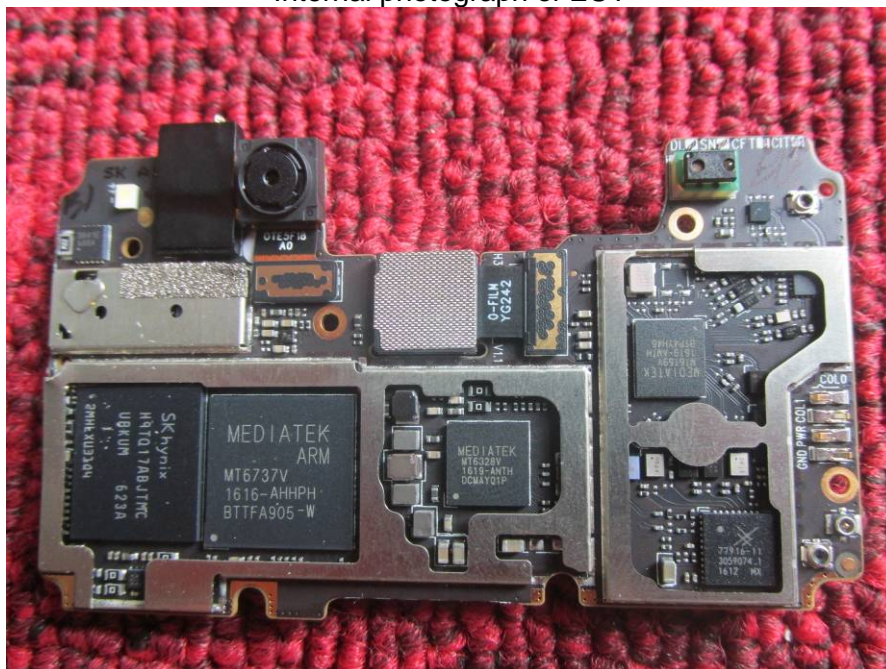
Internal photograph of EUT



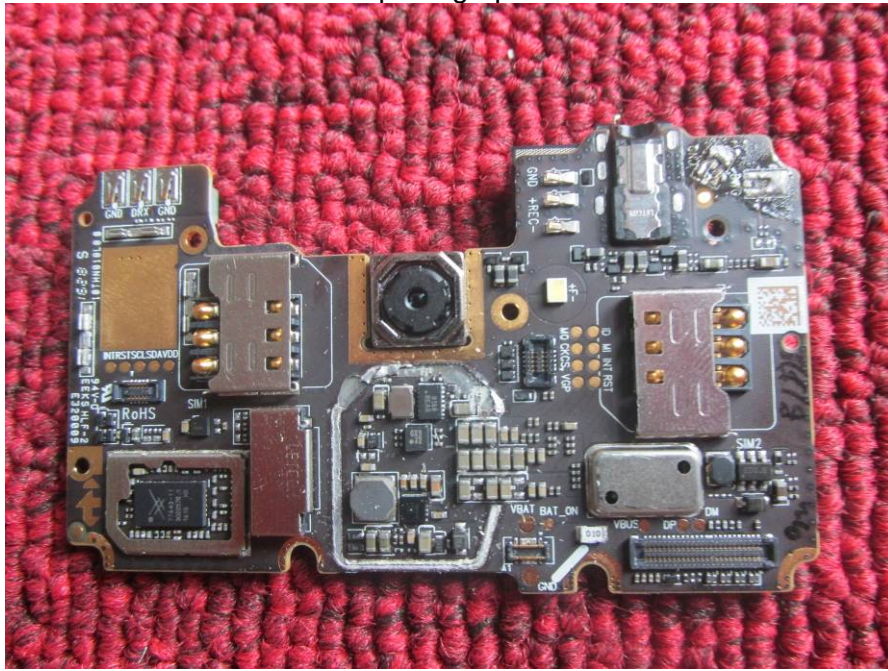
Internal photograph of EUT



Internal photograph of EUT



Internal photograph of EUT



---END OF REPORT---