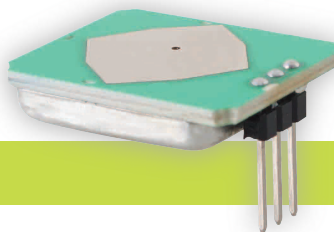


CE RED FCC REACH



PD-V19 5.8GHz 360°/180° Microwave Motion Sensor

Application

- Intelligent switch
- Wall-hung switch
- Intruder detect

Feature and advantage

- Low wireless power output
- Low power consumption
- Non-contact detection
- Easy to connect with the controller
- Low noise output

PD-V19 5.8GHz 360°/180°Microwave Motion Sensor is a C-Band Bi-Static Doppler transceiver modlue .It's built-in Resonator Oscillator (CRO).This module,V8 adopts flat Plane Antenna, suitable for wall mounting. It can improve its front signal receiving ability and reduce its flank blind area. Its performance is better than the sensors in the market.

This module is ideally suiable for occupancy sensor in automatic lighting switches.It can also be used for ceiling mount intruder detectors.

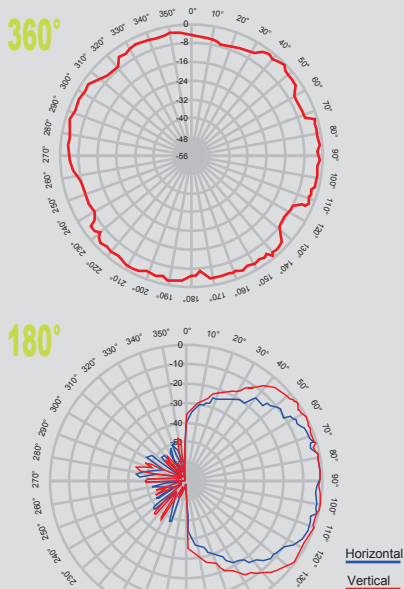
According with EN 300440-V2.1.1、 EN 62479: 2010,RED directive-2014/53/eu

According with FCC Part 15.249

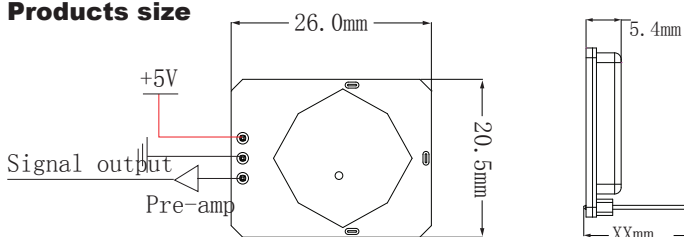
According with EN 62321,ROHS directive-2011/65/eu

According with REACH directive-1907/2006/ec

Antenna Beam Pattern

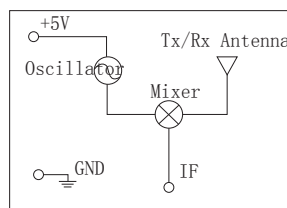


Products size



Note: X height can be customized according to customer requirements.

Block diagram and connection



Parameter	Symbol	Min	Typ	Max	Units	Notes
Frequency Setting	Fstandard		5.80567		GHz	
Radiated Power (EIRP)	Pout		3.54		dBm	
Supply Voltage	VCC	4.75	5.0	5.25	V	
Current Consumption	ICC	10	12	14	mA	
Current Consumption	ICC	13	15	17	mA	
Operating Temperature	TOP	-10	25	90	℃	FCC
Storage environment	TSTG		0-40		℃	CE
Products size		26.0x20.5x5.4			mm	
Weight	Weight	3.3	3.8	4.3	g	20-70% RH humidity

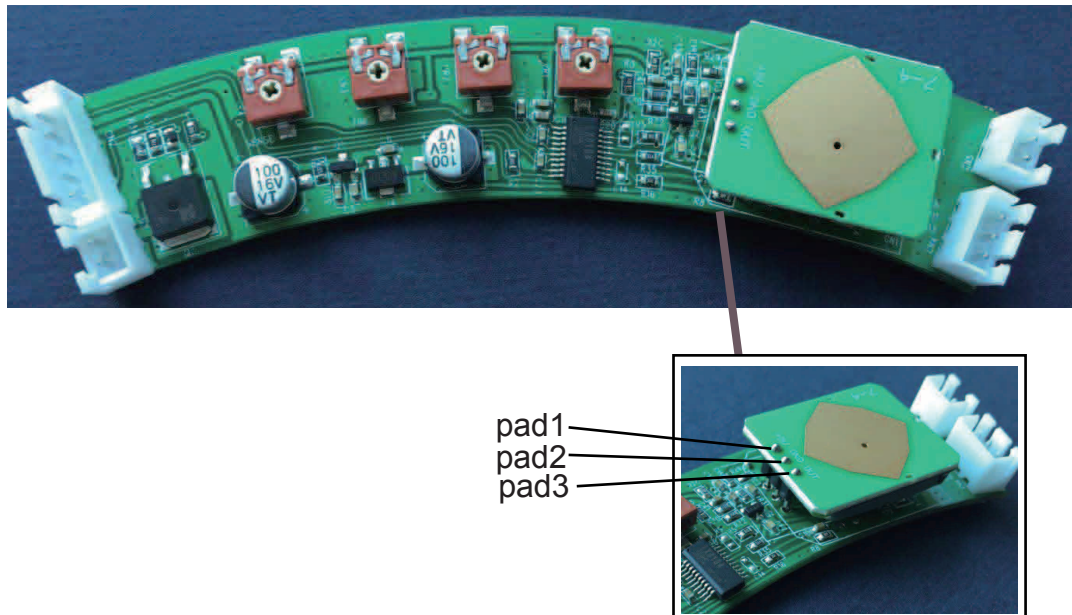
Ningbo Pdlux Electronic Technology CO.,Ltd

Add: 17F,Commerce Building of Ningbo,
No 588, South Tiantong Rode,Yinzhou District,Ningbo, China

Tel: 86-574-65325018
Email: pdlux@pdlux.com

Fax: 86-574-65325000
Web: www.pdlux.com

Installation examples



- 1) Provide 5V DC on pad 1 (4.75V-5.25V)
- 2) Provide DC ground onto PAD2
- 3) Connect PAD 3 (IF) to the μ PC for signal processing

This module is mainly used in the field of induction control lighting.

FCC Statement

Any Changes or modifications not expressly approved by the party responsible for compliance could void the user's authority to operate the equipment.

This device complies with part 15 of the FCC Rules. Operation is subject to the following two conditions:

- (1) This device may not cause harmful interference, and
- (2) This device must accept any interference received, including interference that may cause undesired operation.

FCC Label Instructions

The outside of final products that contains this module device must display a label referring to the enclosed module.

This exterior label can use wording such as: "Contains Transmitter Module FCC ID:2AIWW-PD-V19" or "Contains FCC ID:2AIWW-PD-V19" Any similar wording that expresses the same meaning may be used.