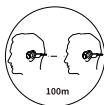


DP6

User Manual Bluetooth Intercom PTT Headset



Please read and keep all safety and use instructions.

Important Safety Instructions

Only use attachments/accessories specified by the manufacturer.

WARNINGS/CAUTIONS

- Children should use this device under the supervision of adults.
- Do NOT use the headset at a high volume for any extended period.
- To avoid hearing damage, use your headset at a comfortable, moderate volume level.
- Turn the volume down on your device before wearing the headsets, then turn the volume up gradually until you reach a comfortable listening level.
- Use caution and follow applicable laws regarding mobile phone and headset use while driving.
- Focus on your safety and that of others if you use the headset while engaging in any activity requiring your attention, e.g, while riding a bicycle or walking in or near traffic, a construction site or railroad and follow applicable laws regarding headsets use, etc. adjust your volume to ensure you can hear surrounding sounds, including alarms and warning signals.
- Do NOT submerge or expose the headset for extended period to water, or wear while participating in water sports, e.g., swimming, water skiing, surfing, etc.
- When using this product, basic precautions should always be followed, including the following:
 - Read all the instructions before charging.
 - To reduce the risk of injury, close supervision is necessary when the headsets is charging near children. Use this product only with a power supply that meets local regulatory requirements(e.g. UL, CSA, VDE, CCC). Only charge with the magnetic charging cable approved by manufacturer. Other charging cable may not meet applicable safety standards, and charging with such cables could pose a risk of injury to the users or damage to the device.
 - Do not charge in excess of its output rating.
 - Do not disassemble the headsets. Incorrect reassembly may result in risk of fire or injury to persons.
 - The headsets should be stored in a cool and dry place, and the working temperature should be -10~50°C. Working in an environment that is too cold, too hot or too humid may shorten the life of the battery.
- Have servicing performed by a qualified repair person using only identical replacement parts.

Cautions:

All the following points contain important safety instructions and must be strictly followed.

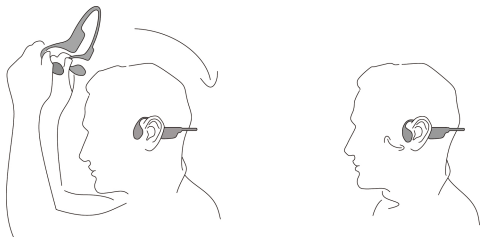
- To charge the internal battery, use USB terminal or USB adapter at normal temperature.
- Do not connect the headset under charging mode
- When charging the battery, if any strange odor or high heat is noted, please immediately pull the plug from headset.
- Charge the headset at least once every six months even if not used for a long term of period.

CONTENTS

Confirm that the following parts are included:

Headset	X1
Cable	X1
Microphone Sponge Cover	X3

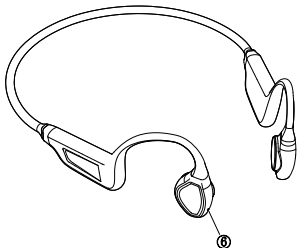
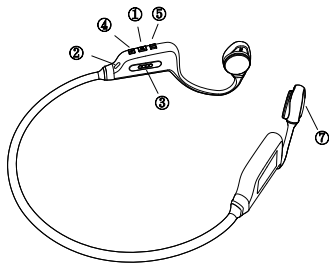
How to wear



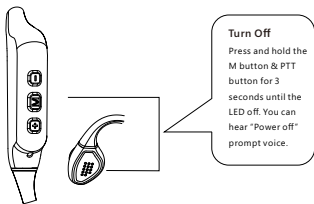
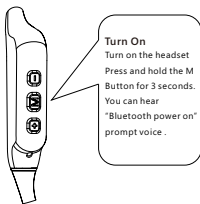
Please charge before use.

Product Keys

- | | |
|--------------------------|-------------------|
| 1.Multifunction Button | 2.Indicator Light |
| 3.Magnetic Charging Port | 4.Volume Up |
| 5.Volume Down | 6.Microphone |
| 7.PTT Button | |



Turn On/Off



PTT (Push-to-talk) Button

Play/ stop Music

Click once, you can hear the voice prompt

Answer Call

Click once

Reject Call

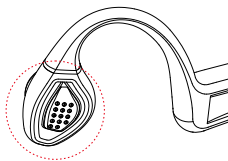
Double click while call incoming

End Call

Double Click

Continue to Previous State

Press once after a talk or a call



Media Audio switching between two mobile phones

When the headset are connected to two mobile phones, and both mobile phones are playing music, double-click the PTT button to switch between two mobile phones.

Interspersed talking between the phone call and the headset's intercom

During the intercom conversation, a phone call incoming, DP6 headset has the capability to simultaneously transfer the voice of both them. This means that you can hear both the phone call and the intercom conversation at the same time. DellKing DP6 follows the principle of phone priority,

allowing you to continue your phone call uninterrupted. If you need to shift to the DP6 intercom, simply press the PTT button to talk and release it to easily switch back to the phone call. Importantly, the content of the phone call and intercom conversation remain independent and confidential.

Audio Source Switching

The DP6 headset is connected to two mobile phones, and both mobile phones are playing music. Clicking the ptt button will pause one mobile phone, and automatically play the music of the other one.

Multifunction Button

Pairing with Mobile phones, Laptops and DellKing DP6 Dongles

Pairing with other DP6

Pairing with Computer dongles

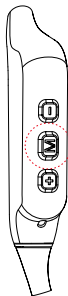
Pairing with Remote Controller

Start DP6 Intercom Talk

Click once

End DP6 Intercom Talking

Click once



Volume Button

Previous Song

Click Volume- once while music is playing

Next Song

Click Volume+ once while music is playing

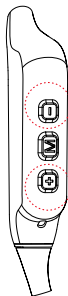
Volume Up/Down

Press and hold Volume+ to tune up volume

Press and hold Volume- to tune down volume

Voice Assistant

Double-click Volume + When there is no music and no calls



Last Number Redial

Double-click Volume -When there is no music and no calls

Remote Control

Play/Pause music

Short Press Once

Answer Call

Short Press Once

End Call

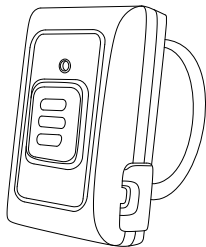
Short Double-press

Reject Call

Short Double-press while call incoming

DP6 Intercom Talk

When the two DP6 headsets are connected and connected to the remote control at the same time via Bluetooth, press and hold the remote controller for 2 seconds to turn on the intercom between the DP6 headsets, and release to turn off intercom between the DP6 headsets.



Bluetooth Paring

Because of Multi-link, closing the Bluetooth of the connected devices before paring one device , and then turn on Bluetooth of the other connected devices, after paired.

Pair 1 DP6 with DP6



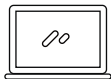
- Make sure two DP6 headsets are in off state .
- Press and Hold M button of both two DP6 headsets for 7 seconds until the LED indicators of two devices flashes red and blue alternately.

- Click once M button of one of two headsets.
- The indicator lights of the two headsets turn blue and flash slowly, indicating that the pairing is successful.
- After successful pairing, you can turn on the Bluetooth of the previously connected devices to achieve multi-device connection and use.

Pair 2 DP6 with Mobile phone/Laptop/Tablet









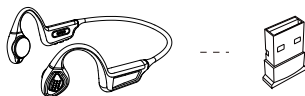
- Start with DP6 headsets without connected with other device.
- Press and hold M button for 7 seconds until the LED indicator flashes red and blue alternately.
- Open your device's Bluetooth setting and select "DellKing DP6 vx.xx"
- The pairing is successful when you hear "Bluetooth connected" prompt voice.
- After successful pairing, you can turn on the Bluetooth of the previously connected devices to achieve multi-device connection and use.

Pair 3 DP6 with Dellking Remote Control



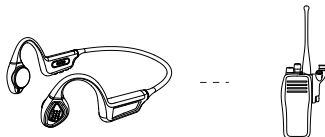
- Start with DP6 headsets without connected with other device.
- Press and hold M button for 7 seconds until the LED indicator flashes red and blue alternately.
- Press and hold the button of remote controller until the LED indicator flashes red and blue alternately.
- Put together until the indicator turn blue and flash slowly, indicating that the pairing is successful.
- After successful pairing, you can turn on the Bluetooth of the previously connected devices to achieve multi-device connection and use.

Pair 4 DP6 with the Dongle of the Computer



- Start with DP6 headsets without connected with other device.
- Press and hold M button for 7 seconds until the LED indicator flashes red and blue alternately.
- Open your device's Bluetooth setting and select "DellKing DP6 vx.xx"
- Until the headset's indicator turn blue and flash slowly, the pairing is successful.
- After successful pairing, you can turn on the Bluetooth of the previously connected devices to achieve multi-device connection and use.

Pair 5 DP6 with DellKing Dongle of Two-way Radios



- Please consult our customer service to choose a DellKing dongle that matches your two-way radio.
- Install the dongle on your two-way radio, turn on the dongle, enter pairing mode.
- Press and hold M button of DP6 headset for 7 seconds or until the LED indicator flashes red and blue alternately.
- Until the headset indicator turn blue and flash slowly, the pairing is successful.
- After successful pairing, you can turn on the Bluetooth of the previously connected devices to achieve multi-device connection and use.

Pair 6 DP6 with Andriod Poc apps (Zello as an example)



- DP6 is connected to the mobile phone via Bluetooth.
- Open Zello Interface. Enter Options.
- Enter Push - to - talk buttons, press the "+" button in the lower right corner. Pop out the below window.



- Press DP6 PTT button. DP6 can be used with Poc app together.

Dual Mix Audio, Merged Listen Function



DP6 headsets utilize the unique DellKing DSP audio technology, allowing them to listen to two audio sources simultaneously, keeping each conversation separate and confidential.

- a. DP6 headsets can listen to both a phone call and an intercom via a two-way radio, ensuring that each conversation is heard separately and kept confidentially
- b. DP6 headsets can listen to both a phone call and an intercom between two DP6s, allowing each conversation separately and maintaining confidentiality for each talk.
- c. When connected to both a mobile phone and a laptop, if a phone call comes in while receiving a call or message from a communication software such as QQ, WeChat, Skype, or WhatsApp, both channels of voice can be heard through the DP6 headsets at the same time. If speaking on the mobile phone, the microphone on the laptop should be muted. If switching to a voice call from the communication software, simply mute the microphone for the incoming call.

Other Functions

Delete the pairing record	Turn on headsets. Press and hold PTT button & Volume - for 5 seconds in condition of disconnecting with any device
USB Upgrade Mode	Press and Hold Volume+ & M button for 3 seconds after connecting the magnetic USB cable. Make sure the headset is fully charged before upgrading. Upgrading, as the battery is low, will cause the headset to crash.
Charging and Reset	Automatic shutdown as connecting the USB cable
Low Battery Alarm	There is a "Battery Low" voice prompt when the battery voltage is less than 3.4V


Technical Specifications

Supported Bluetooth protocols	HSP, HFP, PTT, A2DP, AVRCP, SPP
Average working time	5.5 hours
Standby time with Bluetooth adapters	8 hours
Standby time with mobile phones	47 hours
Charging time	About 2.5 hours
Battery capacity	180mAh
Battery type	Rechargeable Li-polymer battery
Working temperature	-10°C~50°C
Water Resistance Level	IPX6

Please refer to the following for more details:

www.dellking.net www.dellking.com

Storage and Maintenance

- ✧ Keeping the charging port dry before connecting to the charger will reduce the risk of damage.
- ✧ After exercise, please wipe the water on the surface of the headsets, especially the position of the magnetic charging port, to prevent sweat and salt from eroding the charging port and affecting the service life of the product.
- ✧ Please keep away from sharp and hard objects, which may damage the headsets.
- ✧ Keep the product away from heat source, direct sunlight or other liquid.
- ✧ Listening to music at too high volume may hurt your hearing and the audio may be distorted. 

FCC Disclaimer

This equipment has been tested and found to comply with the limits for a Class B digital device, pursuant to part 15 of the FCC Rules. These limits are designed to provide reasonable protection against harmful interference in a residential installation.

This equipment generates, uses and can radiate radio frequency energy and, if not installed and used in accordance with the instruction, may cause harmful interference to radio communications. However, there is no guarantee that interference will not occur in a particular installation. If this

equipment does cause harmful interference to radio or television reception, which can be determined by turning the equipment off and on, the user is encouraged to try to correct the interference by one or more of the following measures:

Reorient or relocate the receiving antenna.

Increase the separation between the equipment and receiver.

Connect the equipment into an outlet on a circuit different from that to which the receiver is connected.

Consult the dealer or an experienced radio/TV technician for help.

FCC Disclaimer

To assure continued compliance, any changes or modifications to this device not expressly approved by manufacture could void your authority to operate this equipment.

This device complies with part 15 of the FCC Rules. Operation is subject to the following two conditions: (1) This device may not cause harmful interference, and (2) this device must accept any interference received, including interference that may cause undesired operation.

The device has been evaluated to meet general RF exposure requirement. The device can be used in portable exposure condition without restriction.

Declaration of Conformity for EU Countries

EMC Directive 2014/30/EU (Including amendments)

Low Voltage Directive 2014/35/EU

RED Directive 2014/53/EU (if product has RF function)

WEEE Disposal instructions

Do not throw this electronic device into the trash when discarding. To minimize pollution and ensure utmost protection of the global environment, please recycle it.

FAQ

1. Cannot power on

The battery power level may be too low. Please charge it for 2.5 hours and then turn it on.

2. No sound

Please check if the volume is too low.

3. Disconnected with mobile phones or other devices

Make sure if the battery power is too low. If not, Please check the distance between DP6 and the mobile phone is over 10m. Or please check there any obstacles like metals or water in between that absorb frequency signals?

4. Cannot pair with phones

Clear all pairing information according to the user manual, and then put the DP6 and mobile phone together within 1m and try to pair again.

5. Bluetooth is connected, but I can't listen to music

If the DP6 is connected with the Bluetooth two-way radio adapter, the music play function of the mobile phone is automatically disabled. In case you can't listen to music even when one mobile phone is connected to the DP6 alone, please check the Bluetooth setting and make sure that the Bluetooth (A2DP) multimedia channel is connected successfully.

6. Can I use it while it is being charged?

For your safety, please do not use the product when it is being charged.

7. System halted?

The systems halts when strong radio frequency interference occurs. Like near high-power TV transmitting tower, GSM base station, or airport radar, the system would crash. Just restart it after leaving the Interference environments.

8. How to exit accidental factory test or USB upgrade mode by wrong operation?

If the DP6 enters the test mode accidentally, the indicator light flashes abnormally, and the DP6 cannot be turned on. Attach the magnetic USB data cable to the DP6 and connect it to the power source or PC USB port. Done.

9. Why does the headset turn off by itself?

Yes, our design is that the headset will automatically shut down after 1.5 hours when it is not connected to any device. In order to better protect the headset battery, which it will not be exhausted due to misuse.

10. There is an incoming call in the middle of the intercom. But after the call ends, there is no sound.

Press once PTT button.

If above cannot solve your problem, please contact our customer service.

Reminder

If any personal injury or property damage is caused by the improper use of the product due to the customer's violation of the product operation instruction, the company will not assume any consequences and legal responsibilities.

Warranty Card

Warranty Period: 12 months from the date of purchase

Free of charge service:

During the warranty period, if there is any breakdown caused by the product's build quality please contact the seller and provide this warranty card together with the sales invoice. The product will be repaired or replaced by a new one.

The warranty does not apply under the following circumstances:

- 1.The product label is broken
- 2.Damage caused due to the product being disassembled by a non-authorized repair agent.
- 3.Damage caused by external force or when there is visible deformation of any of the external parts
- 4.The product has been improperly used or stored
- 5.Damage or breakdown caused by force majeure.
- 6.Other situations similar to the above.

Customer service information	
Customer Name	
Customer Phone	
Customer Address	
Model Number	
Purchase Date	
Dealer	
Invoice number	