

CSR Harmony

4.0 bluetooth driver installation and product instructions

1. The CSR bluetooth adapter V4.0 adopted CSR (Cambridge Silicon Radio) of the company's latest 8510 chip.
2. Support Bluetooth 4.0 low energy, and fully backwards compatible v3.0 + v2.1 + v2.0 + v1.1 + v1.2 Bluetooth device;
3. CSR bluetooth 4.0 chip through is called Wideband researched the technology of audio codec, and further to eliminate background noise and interference, wireless audio transmission quality, excellent A2DP bluetooth stereo audio transmission of sound, can match in excellence the sound quality of audio cable transmission;
4. Bluetooth 4.0 technology have very low operation and standby power consumption, at the same time have a cross-vendor interoperability, 3 ms low latency, AES - 128 encryption, wireless coverage enhancement;
5. Upgrade enhanced version of the bluetooth 3.0, compared with 3.0 the biggest difference is low power consumption.

Part one: the driver

This product is the support from flooding, plug and play. From the bluetooth adapter, and I don't mean don't drive, but Microsoft in the operating system integrated with bluetooth driver, when the bluetooth adapter on computer system will automatically install Microsoft bluetooth driver. But after we test, the Microsoft's own bluetooth driver can only support bluetooth keyboard or agreement, part of the phone's bluetooth file transfer and bluetooth serial port, etc., does not support bluetooth audio functions. If only with you from the adapter to connect to bluetooth keyboard or mouse, can need not additional install the driver, plug in and you can connect and use directly, but if you need to connect to bluetooth headset or want to experience more of the bluetooth application, so we cd-rom driver must be installed.

The driver support multiple languages

Between this drive content is larger, more than four hundred MB, so this product adopts standard drive disc are small DVD; You are advised to put CD content directly copied to the computer again after install, this will make you more save time, installation will be more smoothly.

Windows XP_32 bit/vista_32 bit/Windows7_32 bit/Windows8_32 bit operating system, please directly open the "Setup" folder, double-click the file, you can begin to enter the installation of the driver.

Windows XP_64 bit/vista_64 bit/Windows7_64 bit/Windows8_64 bit operating system, please open the "X64" folder and double click "setup" after entering file, start the installation of the driver.

As shown in figure:

32-bit operating system, please refer to below selection into the installation:



At this time, the system has already started to read the driver file, please be patient!

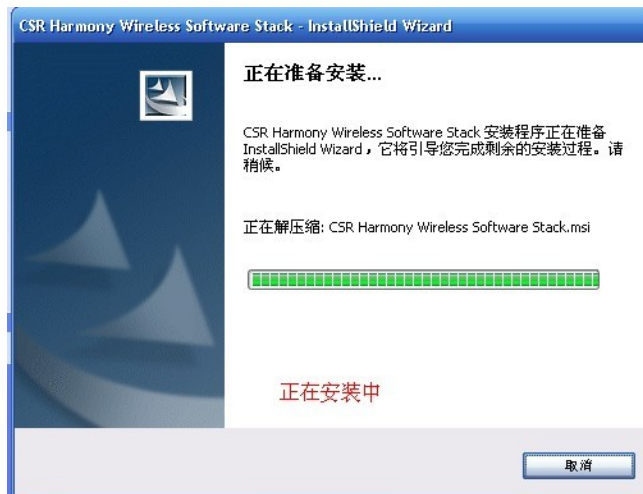
Next, put into the next choose the interface language, please according to the needs of direct selection:



语言的选择

Click ok after the system will enter the installation, please wait! As shown in figure:





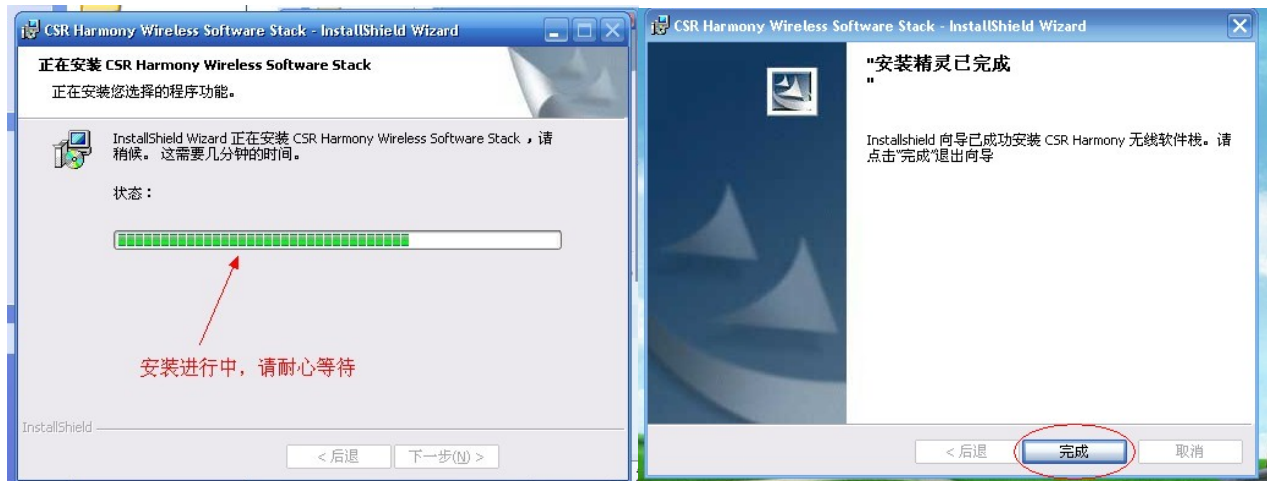
To trouble you to select "receiving" next,
as shown infigure:



Click "next" after, will you choose to open "search", as shown in figure:



Choose good after, the system will enter the installation, as shown in figure:



After the installation is complete, will be born in the "my computer" screen cost driver shortcut icon,



as shown in figure:

Now you can insert a bluetooth adapter, computer can have prompt the lower right corner, as shown in



figure:



This means you have successfully installed the driver, note that if you are buying a bluetooth adapter elsewhere, will not be able to used and the driver!

2. A simple introduction to use some function of this product

Driver installation is finished, if your computer has a built-in bluetooth, please open the device manager, set the built-in bluetooth to "disabled", please refer to the exhibit:



Insert the product after connecting equipment operation:

1. Bluetooth headset: please refer to the pictures on the steps of: for the convenience of the operation, please directly move the mouse to the lower right corner of the Bluetooth desktop icon, point right after selecting "add Bluetooth device", can choose according to your need item to find the equipment:



By this time the desktop will appear a bluetooth into search interface, device will appear in this



You can directly point click double-click to connect to the bluetooth device, can be directly into the match

The state, the system will automatically and equipment matching, and connection, as shown in figure:



Displays the connection is successful, you can open the music player, try the bluetooth headset is a voice, if still no sound, just need you to set the computer voice output. Please refer to the below

XP: "start" -> control panel -> sound, enter the following interface, select the "audio"

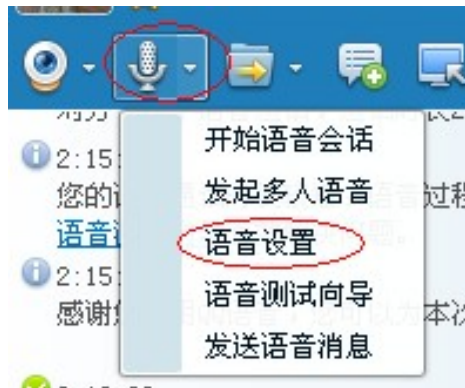


Windows 7: "start" -> control panel -> sound, enter the following interface, select "play"



In sound playback options selected via Bluetooth (Bluetooth stereo), then click "apply" and "ok", open the original player is turned off and then opens, you can hear the sound of Bluetooth headset.

To introduce the following via bluetooth headset voice chat on QQ Settings: in QQ dialog box, click on the "voice conversations" drop-down choice, as shown in figure:



Choose the following after "voice Settings" interface, please select "voice", the sound of the input and output changed to: Bluetooth Audio Device ", then click "ok" can begin after the QQ voice chat.

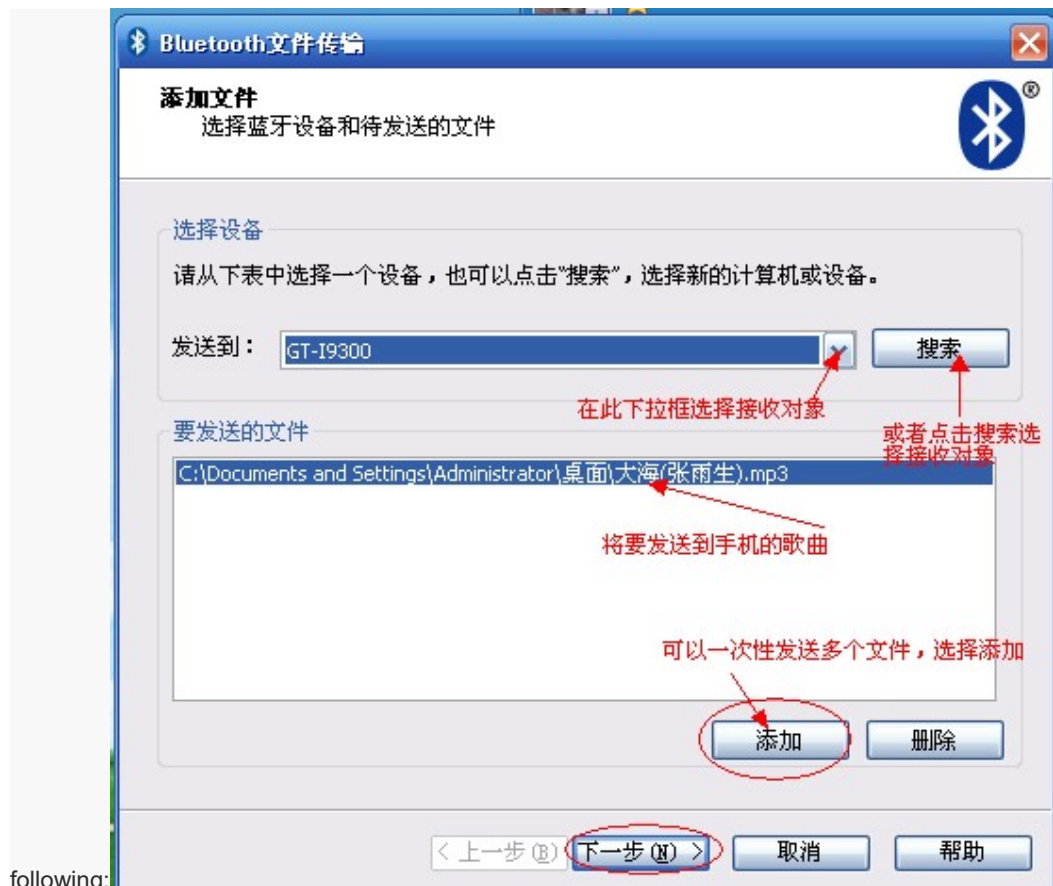


2. Connect phone to send files:

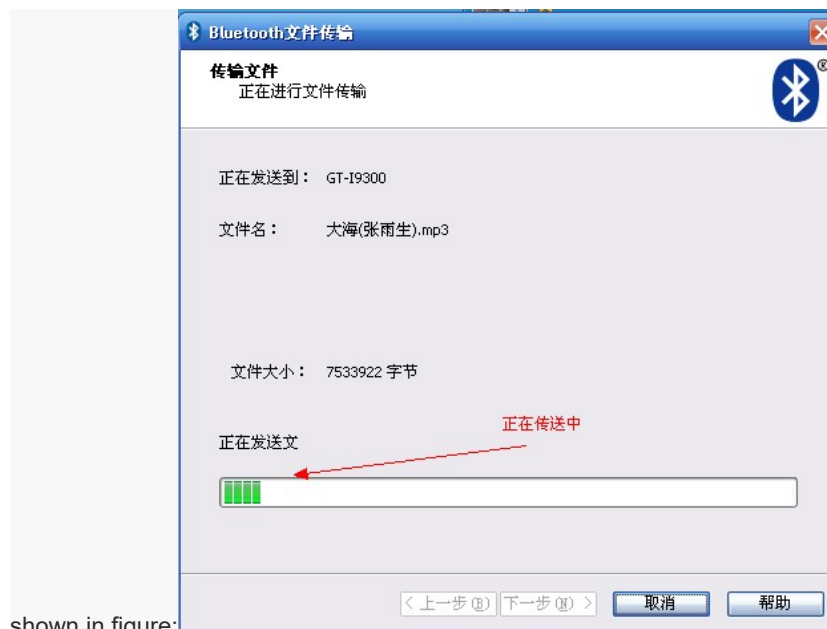
Computers to mobile phones, cell phone bluetooth, is set to "allow search", computer operation began to search for your mobile phone, as shown in figure:



Click finish, the computer has and match your mobile and the connection is successful, can enter the file transfer. Please move the mouse you are going to send the file, right-click options: and sent to the Bluetooth, desktop icon will pop up the



Add files after the success, the choice: "next", the computer started through the bluetooth send files to your mobile phone, as

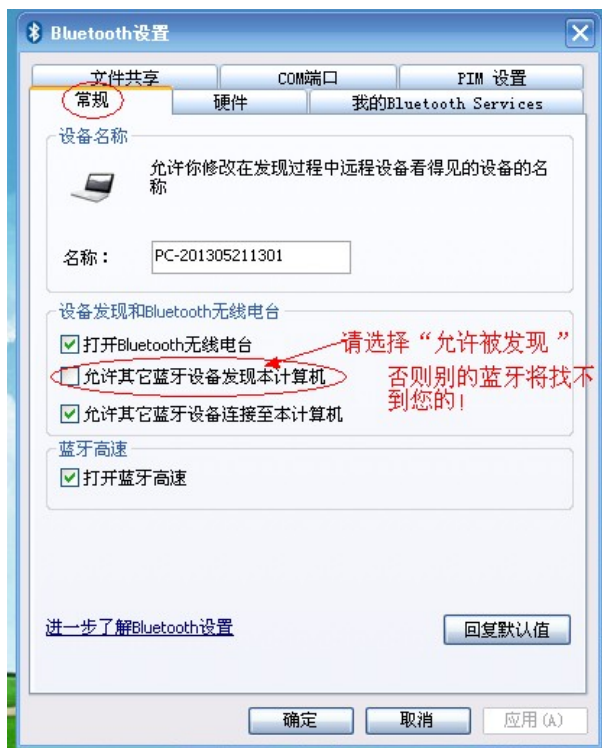




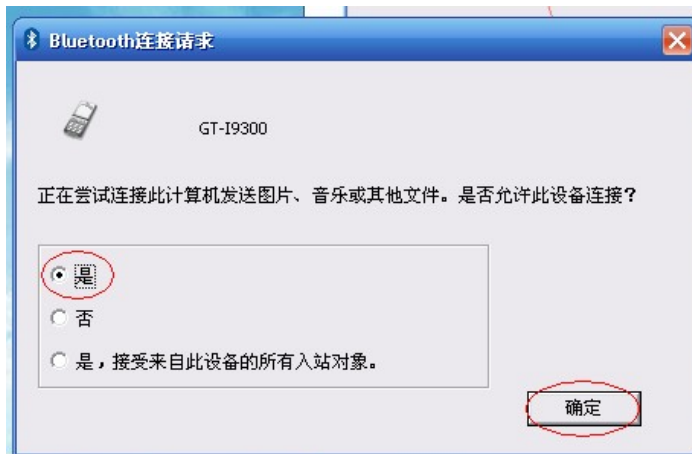
Click "finish", said the right transfer is successful, you can again your mobile phone "Bluetooth" find just received files directory.

B. cell phones to computers (when install the driver test) :

First on the computer side set Bluetooth to "allow", specific operation is: move the mouse to the lower right corner of the Bluetooth desktop icon, point right choice set "Bluetooth", will appear below:



Please in "allow other bluetooth devices found this computer" in front of the box), then click on the "application" and "ok" below and then open to send files on your phone, choose sent via bluetooth, search the receiving object, find began after sending your computer, computer will have prompt, as shown in figure:



Click "yes" and "ok", started by the bluetooth send files to your computer, as shown in figure:



Phone start sending files to a computer, after the success of the sending computer corner will have prompt, click here to suggest computer received file can be found, please remember to file storage directory (also can choose your own location), in order to find.

3. Connect the bluetooth mouse and keyboard:

Is open the mouse or keyboard to search state, bluetooth began to search on the computer you want to connect the device. Now in bluetooth keyboard, for example, open the bluetooth keyboard, make its be search state, computer mouse to desktop bluetooth icon in the lower right corner point right began to search, as shown in figure:



Search bluetooth keyboard, the desktop will pop up a window, you need according to the prompts on this window, type in real-time matching on the bluetooth keyboard password after press the return key, system can connect to your bluetooth keyboard, allows

添加 Bluetooth 设备

连接 Bluetooth 设备

把下列配对码输入设备

372498

这将验证你是否连接正确设备

Bluetooth keyboard....

注:
在输入此配对码之后, 必须按设备上的Enter (确定)、OK (确定) 或类似按钮。

正在等你在自己的设备上输入此配对码...

[如何在我的设备中输入该配对码?](#)

下一步 (N) > 取消

below:

4. Connect other functions of mobile phone is introduced:

Music playback on your computer in the mobile phone



Answer phone calls on the computer:



FCC Statement

This equipment has been tested and found to comply with the limits for a Class B digital device, pursuant to Part 15 of the FCC Rules. These limits are designed to provide reasonable protection against harmful interference in a residential installation. This equipment generates uses and can radiate radio frequency energy and, if not installed and used in accordance with the instructions, may cause harmful interference to radio communications. However, there is no guarantee that interference will not occur in a particular installation. If this equipment does cause harmful interference to radio or television reception, which can be determined by turning the equipment off and on, the user is encouraged to try to correct the interference by one or more of the following measures:

- Reorient or relocate the receiving antenna.
- Increase the separation between the equipment and receiver.
- Connect the equipment into an outlet on a circuit different from that to which the receiver is connected.
- Consult the dealer or an experienced radio/TV technician for help.

This device complies with part 15 of the FCC Rules. Operation is subject to the following two conditions: (1) This device may not cause harmful interference, and (2) this device must accept any interference received, including interference that may cause undesired operation.

Changes or modifications not expressly approved by the party responsible for compliance could void the user's authority to operate the equipment.