

## Package Contents

1x

Switchmate,  
rocker or toggle version



2x

AA batteries



1x

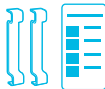
Quick Start Guide



*\*Only for rocker version*

2x

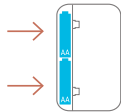
Rocker Adapters,  
one pre-installed



## Installation

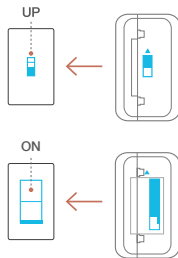
1

**Install** two AA batteries into back of Switchmate.



2

**Snap** Switchmate onto your existing light switch with the light switch in the “up” position. It attaches instantly with the imbedded magnets, no tools or wiring required.



3

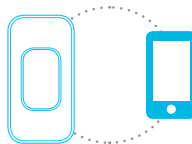
**Download** the Switchmate App from the Google Play or Apple App Store onto your phone.



4

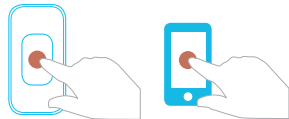
**Launch** the App and follow the few simple steps to connect and activate your Switchmate in seconds.

- Tap the “Start” button.
- Tap the “Walk me through the install” icon and simply follow the simple steps to activate your Switchmate.

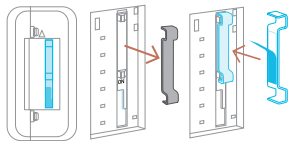


5

**Test** Switchmate both manually at the light switch and using the App.



\*note that a small percentage of rocker switches require the utilization of an adaptor to activate correctly. Simply attach either the thin or thick adaptor included as shown in this graphic below and snap Switchmate back onto the switch. If that is still not working properly, be sure that the screws that hold your light switch plate to the wall are fully tightened.



Check out our 2-minute installation video on [myswitchmate.com/support](https://myswitchmate.com/support)

# Hello

Thank you for purchasing Switchmate. We are excited to bring convenience, security, and peace of mind into your home.



## Close range

Let your lights welcome you home when you come within range of Switchmate.



## Battery Life

View your Switchmate's battery life and receive alerts when it's time to change the batteries.



## Manual Press

Use the Switchmate as a manual lightswitch by pressing the center button.



## Flexibility

Bring the settings with you wherever you go.



## Timers

Schedule when you want your lights to turn on or off, and have this on repeat.



## Randomize

Turn lights on and off at random intervals to create a natural illusion of home activity when you're away.

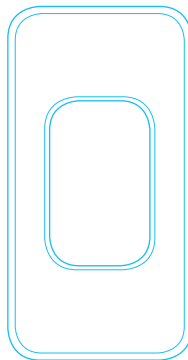


## Reverse

Press Reverse if Switchmate's on/off does not match your lightswitch on/off position.



Unlock the Potential  
of Your Home



For any help or inquiries  
[myswitchmate.com/support](https://myswitchmate.com/support)  
[support@myswitchmate.com](mailto:support@myswitchmate.com)

QUICK START GUIDE

© 2016 Switchmate, Inc. All rights reserved.

## **Federal Communications Commission (FCC) Statement**

This device complies with part 15 of the FCC Rules. Operation is subject to the following two conditions: (1) This device may not cause harmful interference, and (2) this device must accept any interference received, including interference that may cause undesired operation.

**Note:** This equipment has been tested and found to comply with the limits for a Class B digital device, pursuant to part 15 of the FCC Rules. These limits are designed to provide reasonable protection against harmful interference in a residential installation. This equipment generates, uses and can radiate radio frequency energy and, if not installed and used in accordance with the instructions, may cause harmful interference to radio communications. However, there is no guarantee that interference will not occur in a particular installation. If this equipment does cause harmful interference to radio or television reception, which can be determined by turning the equipment off and on, the user is encouraged to try to correct the interference by one or more of the following measures:

- Reorient or relocate the receiving antenna.
- Increase the separation between the equipment and receiver.
- Connect the equipment into an outlet on a circuit different from that to which the receiver is connected.
- Consult the dealer or an experienced radio/TV technician for help.

**Warning:** Changes or modifications made to this device not expressly approved by **Switchmate Home, LLC** may void the FCC authorization to operate this device.

**Note:** The manufacturer is not responsible for any radio or tv interference caused by unauthorized modifications to this equipment. Such modifications could void the user's authority to operate the equipment.