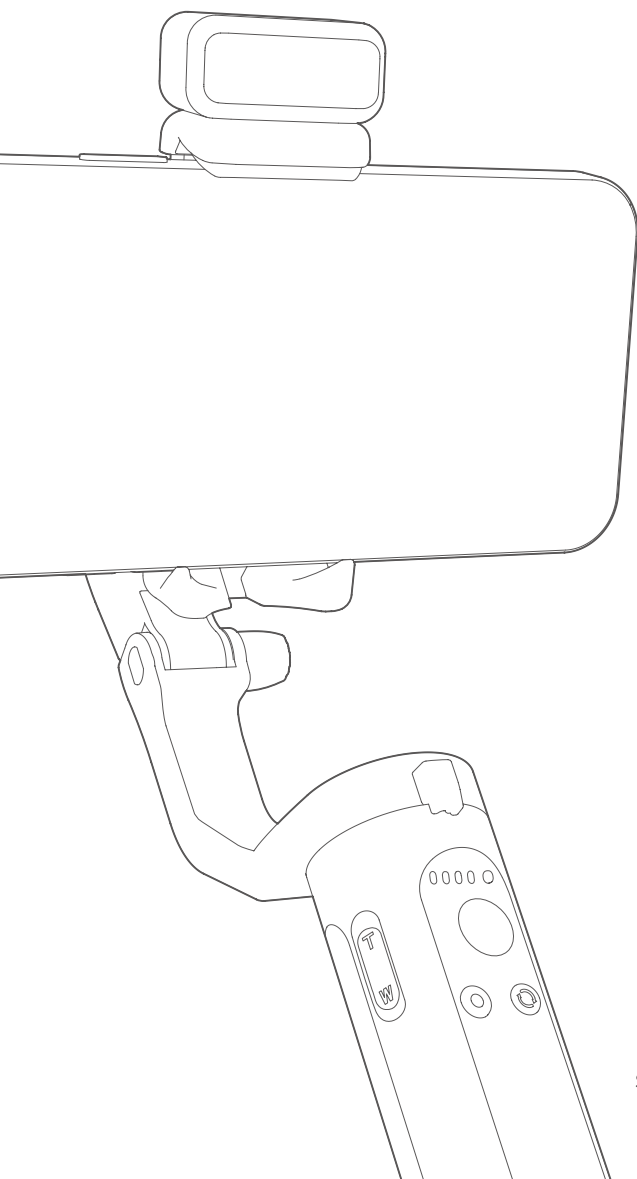


hohem

iSteady XE

User Manual V1.0



Scan the QR code to
access the tutorial

Warning & Disclaimer

Thank you for purchasing the Hohem product. By using this product, you hereby signify that you have read this disclaimer and warning carefully. In addition, you understand and agree to abide by the terms and conditions herein. You acknowledge that you are solely responsible for your own conduct while interacting with this product, and for any consequences thereof. You agree to use this product only for purposes that are proper and in accordance with all applicable laws, rules, and regulations, and all terms, precautions, practices, policies and guidelines Hohem has made and may make available. Hohem accepts no liability for damage, injury, or any legal responsibility incurred directly or indirectly from the use of this product. The user shall observe safe and lawful practices including, but not limited to, those set forth in this document.

This document and all other collateral documents are subject to change at the sole discretion of Hohem. For up-to-date product information, visit www.hohem.com and click on the product page for this product.

hohem

Hohem Technology Co., Ltd

Email

service@hohem.com

Website

www.hohem.com

Manufacturer

Hohem Technology Co., Ltd



Connect us at
Facebook

Download APP—Hohem Joy For More Interesting Functions



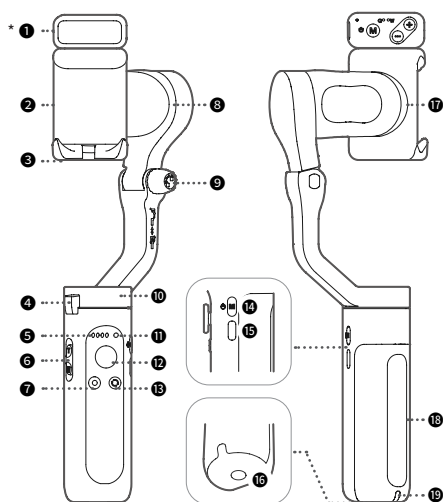
Scan the QR code or search "Hohem Joy" in APP Store or Google Play to download.

* The app Hohem Joy requires iOS 10.0 or later, and Android 6.0 or later.



- Items marked "*" are optional accessories which are sold separately.
 - Mount your mobile phone before powering on iSteady XE.
 - If no mobile phone is detected or the motor is overloaded because phone is not balanced well, the gimbal will shut down after a warning beeping.
-

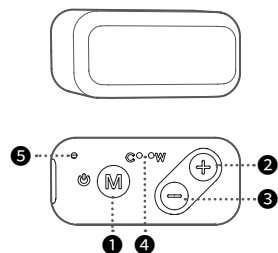
iSteady XE Overview



- ❶ Magnetic Fill Light*
- ❷ Phone Clamp
- ❸ Folding Lock A
- ❹ Folding Lock B
- ❺ Working Mode Indicator (Battery Level Indicator)
- ❻ Zoom Slider
- ❼ Shutter Button
- ❽ Tilt Motor
- ❾ Knob
- ❿ Pan Motor
- ⓫ Bluetooth Light
- ⓬ Joystick
- ⓭ Function Button
- ⓮ M Button(Power Button)
- ⓯ USB-C Charging Port
- ⓰ 1/4"-20 UNC Port
- ⓱ Roll Motor
- ⓲ Handle(Battery Built-in)
- ⓳ Lanyard Hole

iSteady XE Magnetic Fill Light *Sold separately

Cold Light / Warm Light / Natural White Light (10-Level Adjustable Brightness)



❶ M Button (Turn on/off fill light)
Press and hold for 3s: Turn on/off the fill light
Press once: Cold/warm/natural the white light switch

❷ Plus "+" Button
 Single press to increase brightness in ten levels

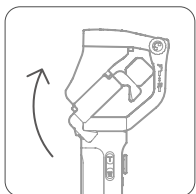
❸ Minus "-" Button
 Single press to decrease brightness in ten levels

❹ Fill Light Indicator
 ("C" is short for cold; "W" is short for warm.)

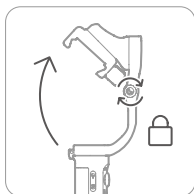
C indicator lighting alone: Cold light in use
W indicator lighting alone: Warm light in use
C&W indicators both lighting: Natural white light in use

❺ Power Indicator
Flashing red: Charging
Solid red: Fully Charged

How to mount and balance a mobile phone on a gimbal?



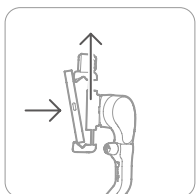
❶ Expand iSteady XE



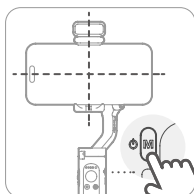
❷ Tighten the knob by turning it clockwise.



The gimbal would not function properly if the knob was not tightened.



❸ Make sure that the phone camera is on the left side of the clamp. Insert your mobile device by putting it stuck in the bottom of phone clamp and pulling the top side of the clamp to clip it into place.

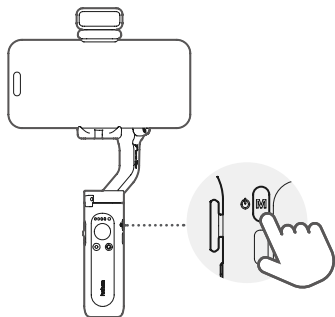


❹ Slide the phone and keep it clamped and balanced centrally before powering on.



Ensure your phone is centrally clamped to the rubber pads, otherwise the gimbal would vibrate or turn off automatically.

Power on & Bluetooth Connection



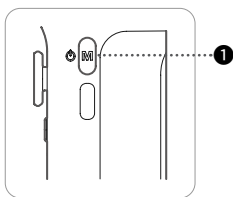
❶ Power on

Press and hold the M Button(Power ON/OFF Button) for 3s

❷ Bluetooth connection through the App

Enable Bluetooth on your smartphone
Launch the App Hohem Joy and follow the prompts to connect iSteady XE device.

Button Function



❶ M Button(Power Button)

Press and hold for 3s: Power on/off

Press once: Switch between working modes (PTF-PF-L-POV)

Press twice: Standby mode (Press any button to exit)

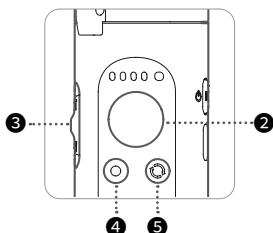
Press five times: Auto calibration

❸ Zoom Slider

(Available in the Hohem Joy / Android 10.0 or later, please ensure the Bluetooth pairing.)

Push up: Zoom in

Push down: Zoom out



❷ Joystick

Up/Down: Tilt rotation control

Left/Right: Pan rotation control

(It is able to control the roll rotation through "Left/Right Joystick" Setting in Hohem Joy app)

❹ Shutter Button (Please ensure the Bluetooth pairing)

Press once: Take photo; Start/End video

Press twice: PHOTO/VIDEO switch

Press three times: Front/Rear camera switch (Available in the Hohem Joy / Android 10.0 or later, please ensure the Bluetooth pairing.)

❺ Function Button

Press once: Landscape mode/Portrait mode switch

Press twice: Recenter the gimbal

Press three times: 180° inception mode/ 180° spin shot (auto rotation)

Press seven times: Remote control* pairing

When paired with a remote control*

Press function button once: Cancel pairing

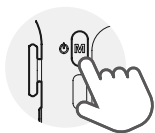
Press function button twice: Clear the paired remote control* (The paired remote control will be unavailable and needs to be re-paired.)

Press on function button: Check the gimbal battery level

(Remote control is sold separately.)

Working Mode & Follow Speed

Working Mode



To switch between working modes, please press the M button once.



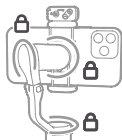
Pan Follow

When you rotate the handle left/right, the camera will follow the handle movements. The tilt motor does not follow within the angle range of -45° ~ $+45^{\circ}$ movement, if exceed this range, the gimbal will follow the tilt movement, and the roll motor is locked without following the movement.



Pan&Tilt Follow

This is the default working mode. When you rotate the handle left/right/tilt up/tilt down, the camera will follow the handle movements, and the roll motor is locked without following the movement.



All Lock

The roll and pan motors are locked without following the movement. The tilt motor does not follow within the angle range of -45° ~ $+45^{\circ}$ movement, if exceed this range, the gimbal will follow the tilt movement.



POV (All Follow)

First person point of view

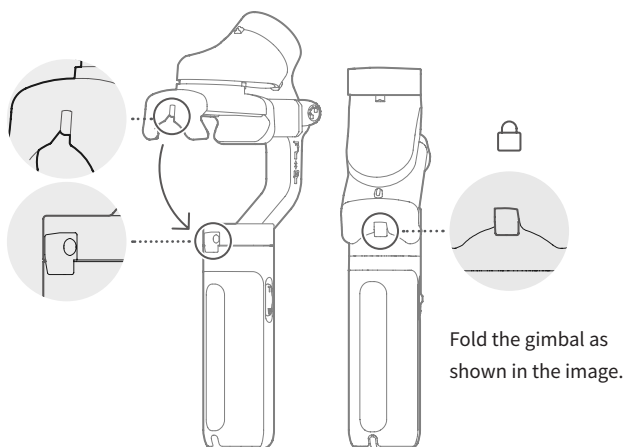
Gives you 360° complete movement, you can pan, tilt and roll with it.

Follow Speed

For changing follow speed, please launch Hohem Joy App - Start Recording - Gimbal Parameter Settings (Bluetooth connection is necessary.)

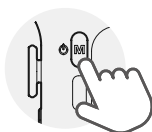
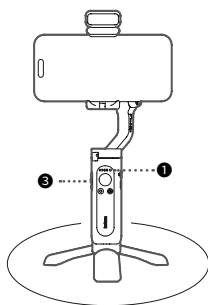
General	Shooting with general follow speed
Slow	Shooting with slow follow speed
Medium	Shooting to follow the fast movement
Fast	Fast follow speed for video transition

How to fold iSteady XE?



How to calibrate iSteady XE?

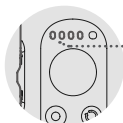
If the gimbal is not level after turning on, or the pan axis is slight drift when the gimbal is still, please calibrate it.



- 1 Turn on the gimbal and press function button five times.
- 2 Start calibration after a beep sound.



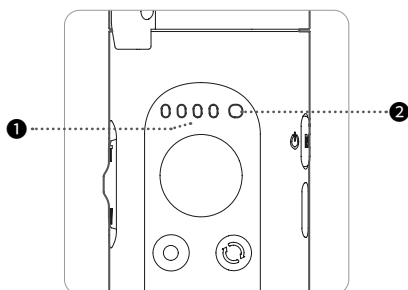
Calibrate the gimbal on a flat surface and keep it stationary.



Working mode indicator (Battery indicator)

- 3 Alternating flashes of the first two battery lights and the last two battery lights.
- 4 The calibration is done after two beeps sound.
(The calibration takes about 40 seconds)

Battery Level Indicator & Bluetooth Indicator



❶ Working mode indicator(Battery level indicator)

Display gimbal mode: If one of working modes is in use, its mode light will be in solid green.

Display battery level: Long pressing Function Button to check out battery level (The more lighting indicators you see, the higher the battery level.)

Display charging status: Light flashing means gimbal in charge; Light staying on means gimbal is fully charged.

Others: Continuous flashing when calibrating the gimbal.

❷ Bluetooth indicator

a. Color indicates the status of the gimbal

Light off: Bluetooth disconnected

Green: Bluetooth connected

Pulse red: Low battery warning

Blink red quickly: Low-battery shutdown countdown

Solid red: Error warning

Flashing red with beep sound: Overloading

b. Blinking indicators of remote control* status

Blink yellow and green alternatively: Pairing

Blink yellow: Paired

*Remote control is sold separately.

Gimbal Specifications

Weight	259g (Excluding fill light&tripod)
Folded Size	179 X 79 X 39 mm
Battery Capacity	3.7V / 2000mAh
Battery Life	8 hours
Mechanical Range	Pan: 320° ; Roll: 320° ; Tilt: 320°
Controllable Range	Pan: 320° ; Tilt: -45° ~+45°
Compatible Phones	Weight: ≤ 280g; Thickness: ≤ 11mm; Width: 55mm~90mm

The motor would be shown on the screen due to some of mobile cameras are designed at the middle of phone, such as Xiaomi Mi 10, Xiaomi Mi 10 Pro, and Xiaomi Mi CC9 PRO.

Fill Light Specifications

Weight	16g
Battery Capacity	3.7V / 300mAh
Power	1W
Battery Life	1Hour
Lights	Cold Light (6500k) Warm Light (3000k) Natural White Light (5500k)

Warranty Terms

- 1. Customers are entitled to replacement service in case of quality deficits or functional disorder found in the product within 7 days upon the purchase date. But ensure the commodity and package with no damage, and we will offer a brand new replacement after confirming the product's problem is not related to artificial damage.
- 2. The warranty service is subject to normal use.
- 3. The valid warranty period is 12 months counting from the date of selling under normal use. Accessories are excluded from the warranty service.
- 4. This warranty service DOES NOT cover accidental or artificial damages (including but not limited to) caused by unauthorized modification, disassembly, incorrect use and operation.
- 5. Please keep and offer the warranty card for claiming the warranty service.

CALL CENTER -Toll Free

UNITED STATES:	+1(888)9658512	Mon-Fri: 9:00AM-5:00PM(EST)
UNITED KINGDOM:	+44(0)808 2737578	Mon-Fri: 2:00PM-10:00PM(GMT +0)
CANADA:	+1(855)758-8939	Mon-Fri: 9:00AM-5:00PM(EST)
BRAZIL:	+55 (0)800 5911897	Mon-Fri: 10:00AM-6:00PM(GMT -3)

Warranty Card

User Name:

Contact No.:

Address:

Purchase Date:

Prod. Serial No.:

Failure Cause:

Service Record:



Scan the QR code to
access tutorial

Federal Communication Commission (FCC) Radiation Exposure Statement

The device has been evaluated to meet general RF exposure requirement, The device can be used in portable exposure condition without restriction Federal Communication Commission (FCC) Radiation.

This device complies with part 15 of the FCC rules. Operation is subject to the following two conditions: (1) this device may not cause harmful interference, and (2) this device must accept any interference received, including interference that may cause undesired operation.

NOTE: The manufacturer is not responsible for any radio or TV interference caused by unauthorized modifications or changes to this equipment. Such modifications or changes could void the user's authority to operate the equipment.

NOTE: This equipment has been tested and found to comply with the limits for a Class B digital device, pursuant to part 15 of the FCC Rules. These limits are designed to provide reasonable protection against harmful interference in a residential installation. This equipment generates uses and can radiate radio frequency energy and, if not installed and used in accordance with the instructions, may cause harmful interference to radio communications. However, there is no guarantee that interference will not occur in a particular installation. If this equipment does cause harmful interference to radio or television reception, which can be determined by turning the equipment off and on, the user is encouraged to try to correct the interference by one or more of the following measures:

- Reorient or relocate the receiving antenna.
- Increase the separation between the equipment and receiver.
- Connect the equipment into an outlet on a circuit different from that to which the receiver is connected.
- Consult the dealer or an experienced radio/TV technician for help.

FCC Caution: Any changes or modifications not expressly approved by the party responsible for compliance could void the user's authority to operate this equipment.

IC Statement:

This device complies with Industry Canada license-exempt RSS standard(s). Operation is subject to the following two conditions:

- (1) this device may not cause interference, and
- (2) this device must accept any interference, including interference that may cause undesired operation of the device .

Le pr é sent appareil est conforme aux CNR d'Industrie Canada applicables aux appareils radio exempts de licence. L'exploitation est autoris é e aux deux conditions suivantes :

- (1) l'appareil ne doit pas produire de brouillage, et
- (2) l'utilisateur de l'appareil doit accepter tout brouillage radio é lectrique subi, m ê me si le brouillage est susceptible d'en compromettre le fonctionnement.

The product comply with the Canada portable RF exposure limit set forth for an uncontrolled environment and are safe for intended operation as described in this manual. The further RF exposure reduction can be achieved if the product can be kept as far as possible from the user body or set the device to lower output power if such function is available.

D é clarat ion d'exposition aux radiations:

Le produit est conforme aux limites d'exposition pour les appareils portables RF pour les Etats-Unis et le Canada é tablies pour un environnement non contr ôl é .

Le produit est s ûr pour un fonctionnement tel que d é crit dans ce manuel. La r é duction aux expositions RF peut ê tre augment é e si l'appareil peut ê tre conserv é aussi loin que possible du corps de l'utilisateur ou que le dispositif est r é gl é sur la puissance de sortie la plus faible si une telle fonction est disponible.