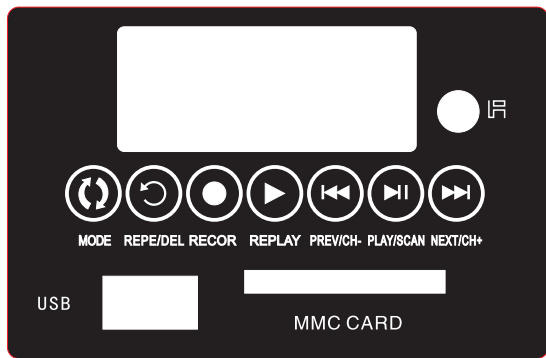
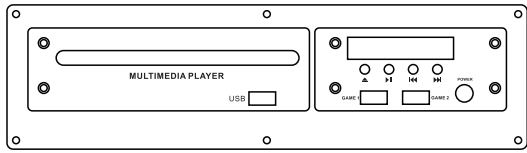
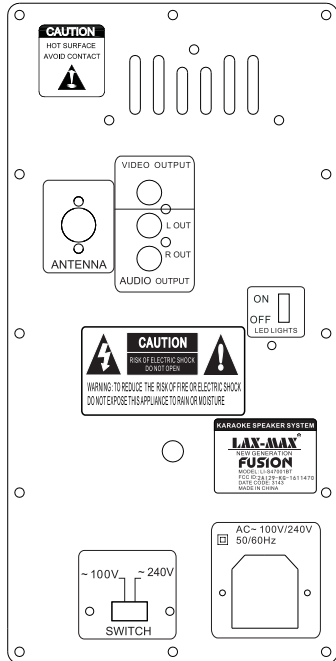
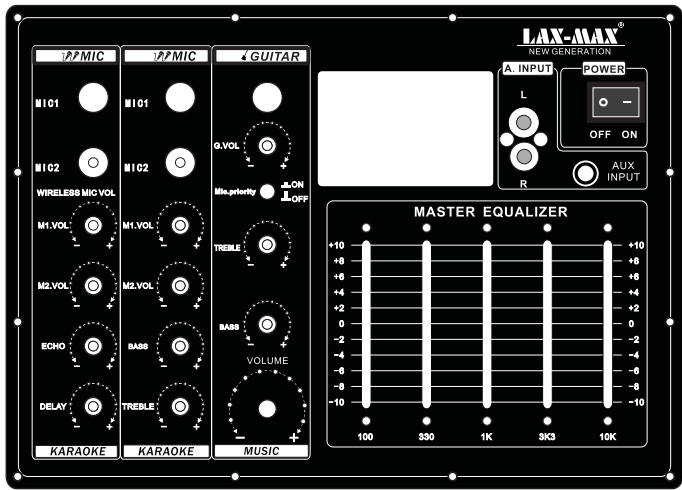


# SPEAKER



Copyright © Lakshmi International, Inc., 2016-2017

## All Rights Reserved

This publication is protected by copyright and all its rights reserved. No part of it may be reproduced or transmitted by any means or in any form, without prior consent in writing from Lakshmi International, Inc. The information in this publication has been carefully checked and is believed to be accurate. However Lakshmi International Inc., assumes no responsibility for any inaccuracies, errors, or omissions that may be contained in this document. In the interest of continued product development, Lakshmi International, Inc. reserves the right to make improvements in its documentation and the products it describes at any time, without notice or obligation.

## Features

- FM Radio
- NFC Function
- Wireless to connect to external Audio Players (iPod®/iPhone® / iPad®/ smartphones etc.)
- USB/SD slot Plays MP3 Files stored in your SD Card or USB Disk Drive
- AC cable included
- AUX cable included

## Power supply for Unit

- Connect the supplied cable to AC power cord.
- Power: 100V/240V, SET ON 100V.
- Use On/Off button to switch power ON/OFF on unit.

## Wireless Mode

- Short press "M" (Mode) button to switch between WIRELESS / USB / SD /FM/AUX
- On your smartphone, scan and select "LI-S47001BT" to pair.
- Sound quality will depend on quality of your media file or distance of smartphone from speaker ( Distance should NOT be more than 30Ft) or There should be no object blocking the Wireless Signal
- To control volume Long Press "I◀/V-" (volume down) or "▶I/V+" (volume up).
- To change tracks Short Press "I◀/V-" (Previous Track) or "▶I/V+" (Next Track).
- To Pause or Release Pause Short Press "▶||/"
- Suggested maximum distance from your smartphone during Wireless mode – 30Feet

## USB / SD

- Plug in your USB Disk and/or SD Card in the slots provided. Please make sure you use the correct file format in your media devices – MP3 FILES ONLY and correct mode has been selected.
- Short press "M" (Mode) button to switch between WIRELESS / USB / SD /FM/AUX. Please ensure that your files are MP3 format, or correct source has been selected.
- To control volume Long Press "I◀/V-" (volume down) or "▶▶I/V+" (volume up).
- To change tracks Short Press "I◀/V-" (Previous Track) or "▶▶I/V+" (Next Track).
- To Pause or Release Pause Short Press "▶||/"
- Please remember to turn off the power of the Speaker before removing the USB Disk or SD Card.

## FM Radio

- Short press "M" (Mode) button to switch between WIRELESS / USB / SD /FM/AUX Please ensure correct source has been selected.
- To control volume Long Press "I◀◀/V-" (volume down) or "▶▶▶I/V+" (volume up).
- Short Press "▶||/" to Auto Scan and preset available frequencies
- To switch between preset frequencies Short Press "I◀◀/V-" or "▶▶▶I/V+".

## NFC Function:

1. Short press "M" (Mode) button to switch between BT / USB/ SD /FM/AUX (select BT)
2. Switch on the NFC feature of your enabled device.
3. Place your enabled device on top of the "NFC" sticker on the unit. Your device should automatically pair.
4. You may use your enabled device or this speaker to control the volume and track selection.



WIRELESS  
CONNECTION

# WIRELESS KARAOKE SPEAKER

USB/SD/FM



LI-S47001BT

## Record Function

This speaker is capable of recording sound and music from your Microphone or FM radio. Recording maybe saved in your inserted SD card or USB drive.

## Operation as below:

1. Insert your SD memory card into this speaker slot.
2. Connect the wired mic (included) to the mic input jack, or select the FM mode.
3. Insert a SD card into the "SD card" slot.
4. Press the "Record" button to record. Once done, press the "Record" button again to stop and save the file on your inserted SD card.
5. Press the "Replay" button to playback your recorded file.

## Multimedia player

1. Press "MM PLAYER" button to select multimedia player function.
2. Press "POWER" button to turn on.
3. To insert disk, Press "▲" button and gently place the disk in the extended tray.
4. when the disk is set in the tray press" ▲ "again
5. To change tracks Short Press "I◀" (Previous Track) or "▶I" (Next Track).
6. To Pause or Release Pause Short Press "▶||"

## Aux (Line In)

1. Plug in external device to Aux jack using supplied cable to listen audio through unit.
2. Short press "M" (Mode) button to switch between WIRELESS / USB / SD /FM / AUX. Please ensure that your speaker is fully charged & correct source has been selected
3. To control volume Long Press "I◀◀/V-" (volume down) or "▶▶▶I/V+" (volume up).
4. Short Press "▶||/" to mute
5. Tracks can only be changed from your connected external device.

iPod®, iPhone® & iPad®, are registered Trademarks of Apple Computer Inc. This product is not Designed, Manufactured or Distributed by Apple Computer Inc. All other Trademarks & Trade Names belong to their respective owners.

## FCC STATEMENT :

This device complies with Part 15 of the FCC Rules. Operation is subject to the following

two conditions:(1) This device may not cause harmful interference, and (2) This device must accept any interference received, including interference that may cause undesired operation.

Warning: Changes or modifications not expressly approved by the party responsible for compliance could void the user's authority to operate the equipment.

NOTE: This equipment has been tested and found to comply with the limits for a Class B digital device, pursuant to Part 15 of the FCC Rules. These limits are designed to provide reasonable protection against harmful interference in a residential installation. This

equipment generates uses and can radiate radio frequency energy and, if not installed and used in accordance with the instructions, may cause harmful interference to radio communications. However, there is no guarantee that interference will not occur in a particular installation. If this equipment does cause harmful interference to radio or television reception, which can be determined by turning the equipment off and on, the user is encouraged to try to correct the interference by one or more of the following measures:

Reorient or relocate the receiving antenna.

Increase the separation between the equipment and receiver.

Connect the equipment into an outlet on a circuit different from that to which the receiver is connected.

Consult the dealer or an experienced radio/TV technician for help.

FCC Radiation Exposure Statement

This equipment complies with FCC radiation exposure limits set forth for an uncontrolled environment. This equipment should be installed and operated with minimum distance 20cm between the radiator & your body