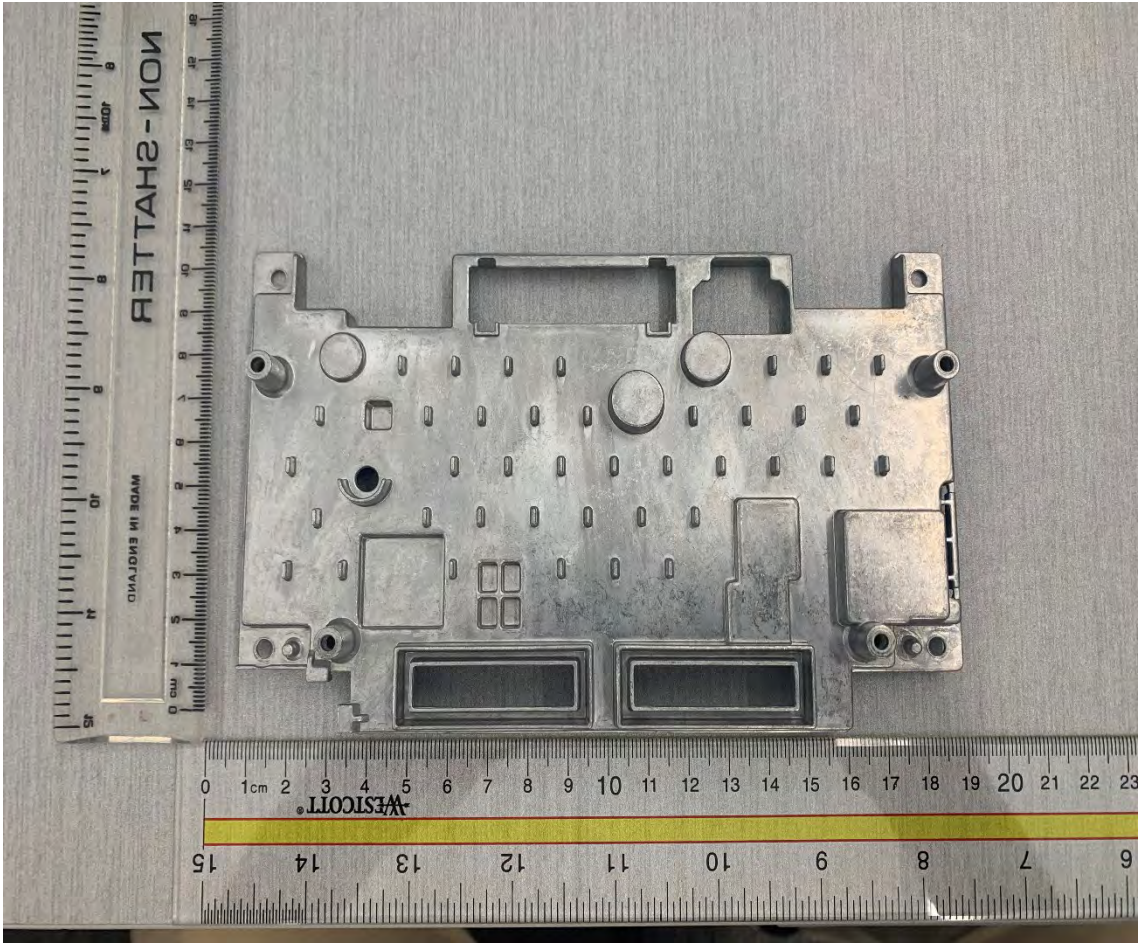
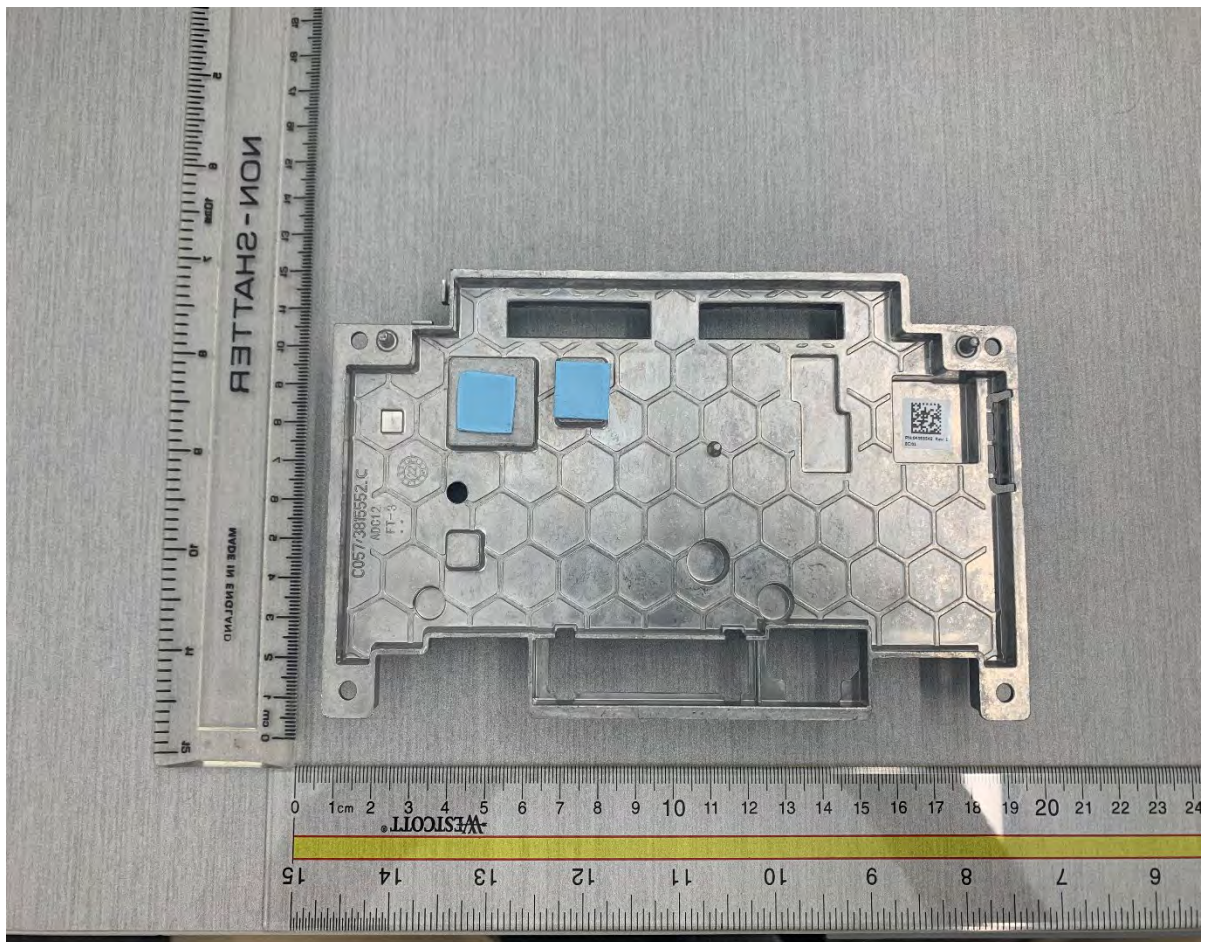


Inner Casting 2 – Side 1

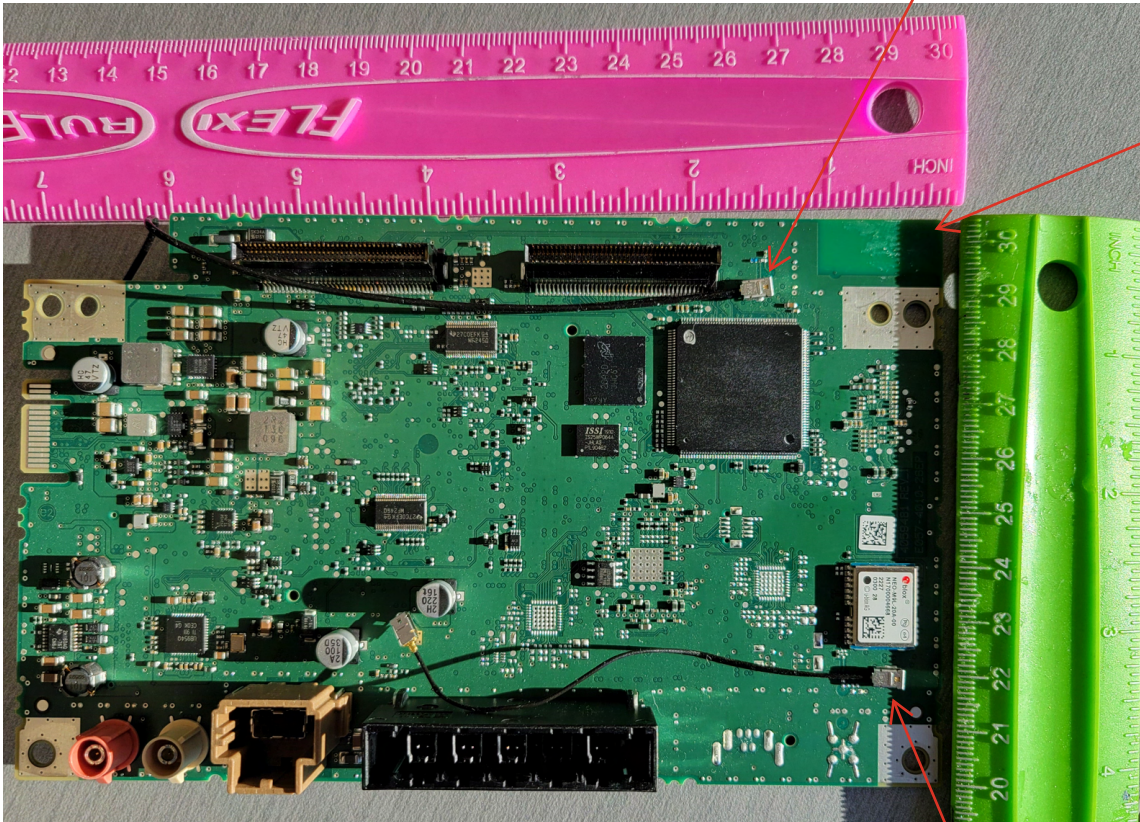


Inner Casting 2 – Side 2



Back Board – Side 1 (3B MID)

ULF connector:
2.4 GHz WLAN input to
the Main PCBA Antenna
(Please go to the page
21)



HW capabilities

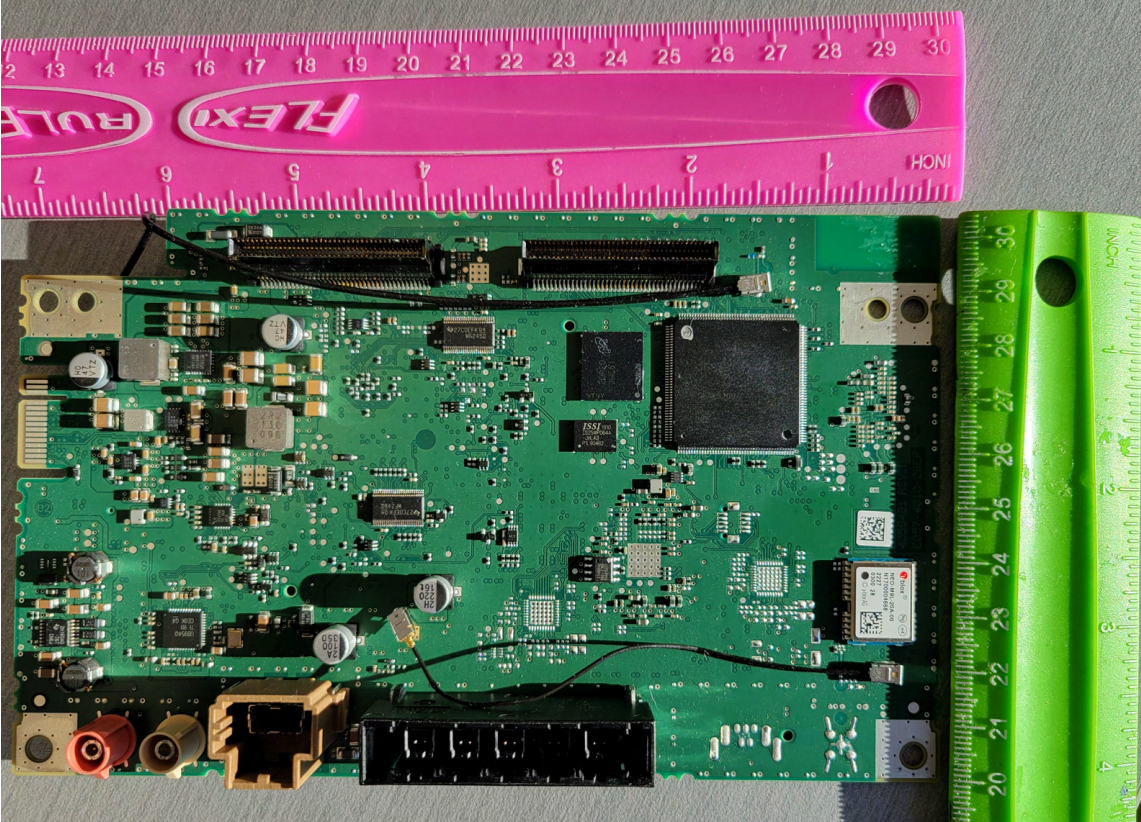
Main PCBA
Antenna
WLAN
2.4 GHz / 5
GHz

Supported
SW configuration

Main PCBA
Antenna
WLAN
2.4 GHz

ULF connector:
Is to connect the GPS
Ublox IC to GNSS/GPS
module. This connexion is
not used for NA
variants. (Please go
to page 9)

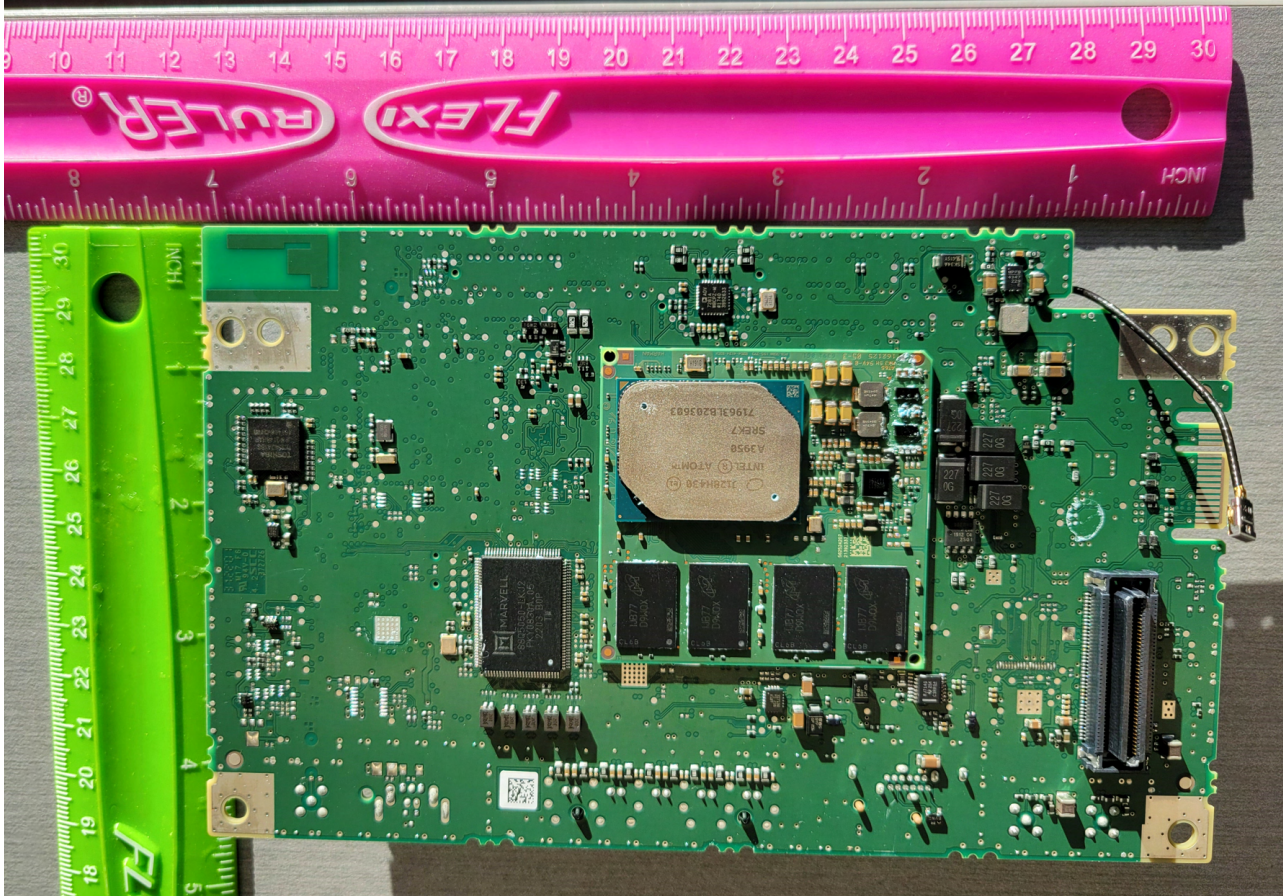
Back Board – Side 1 (2B HIGH)



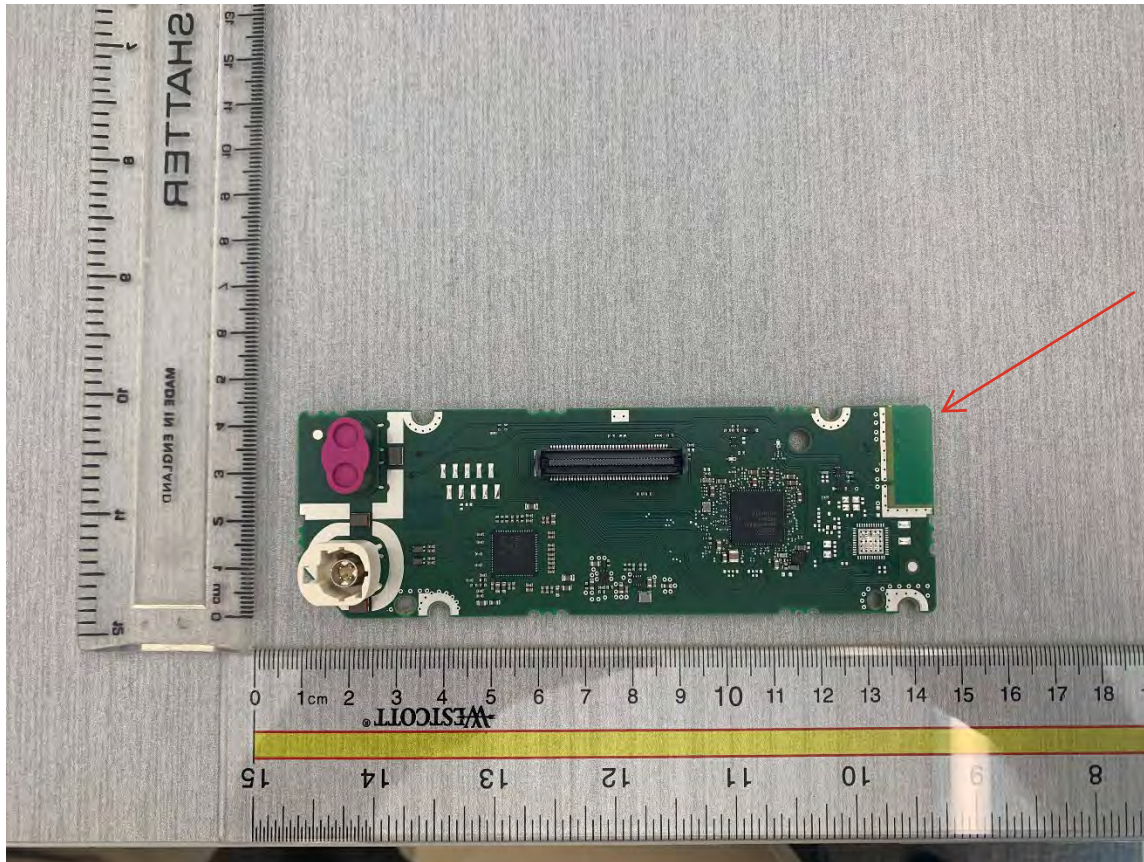
Back Board – Side 2 (3B MID)



Back Board – Side 2 (2B HIGH)



Front Board – Side 1



HW capabilities

Front PCBA
Antenna

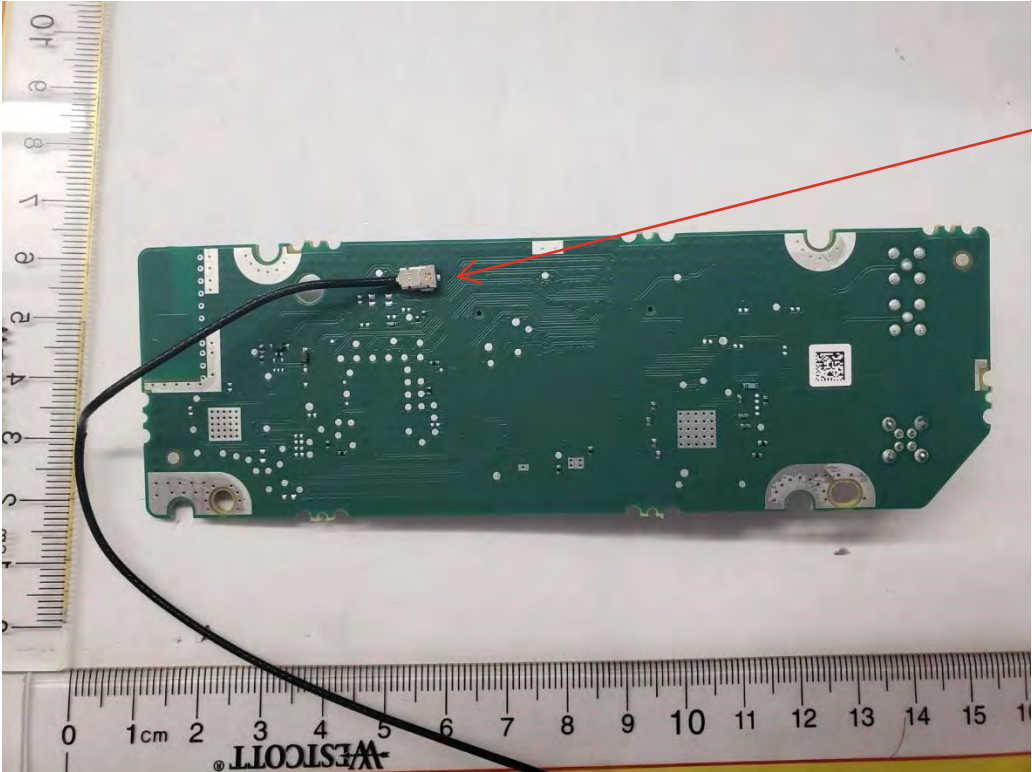
BT 2.4GHz
WLAN2.4G
Hz/5G

Supported
SW configuration

Front PCBA
Antenna

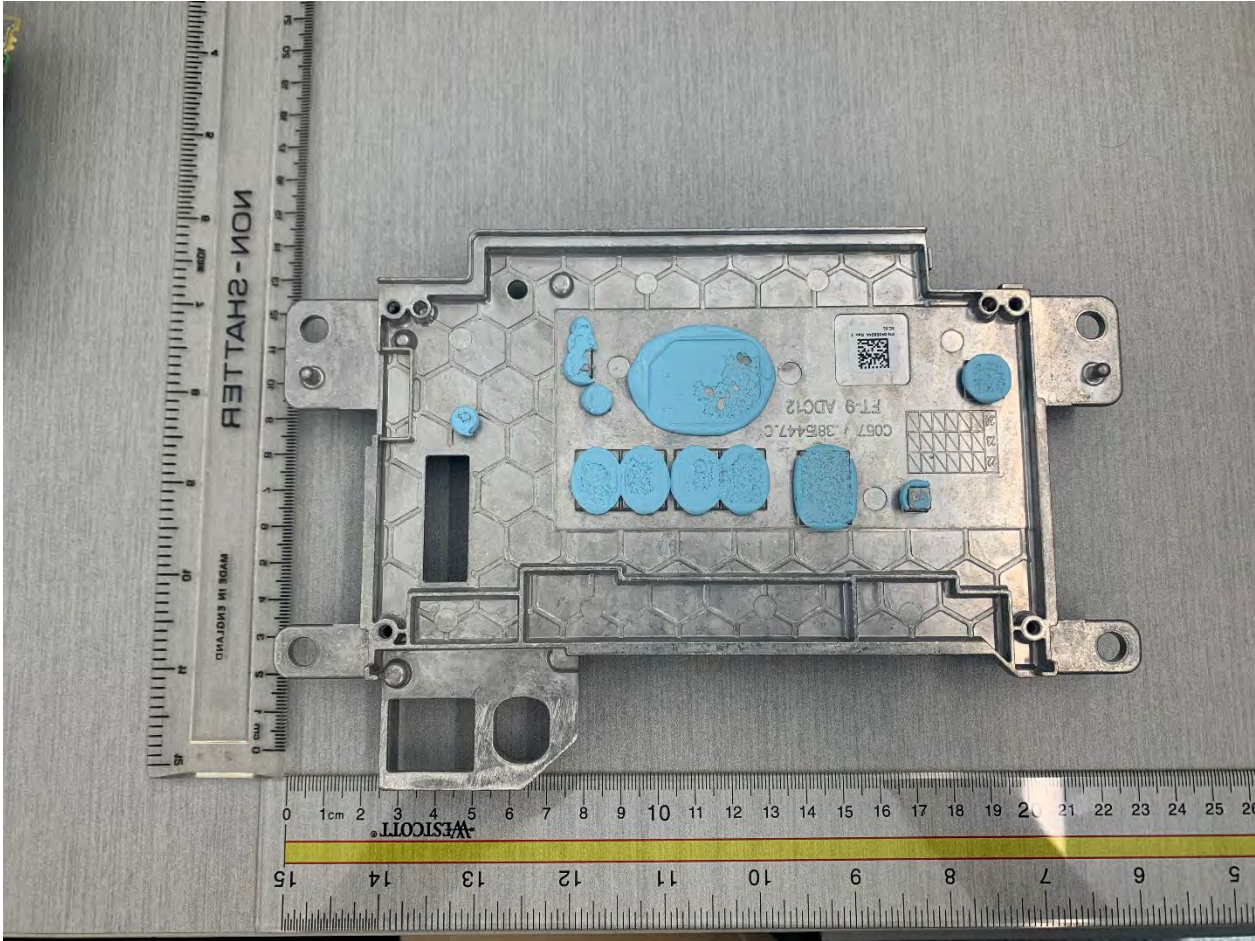
BT 2.4GHz
WLAN 5GHz

Front Board – Side 2



ULF connector:
2.4 GHz WLAN output to
the Main PCBA Antenna
(Please go to the page
16)

Bottom Casting – Side 1



Bottom Casting – Side 2

