

Smart Watch

User Manual



- Thanks for purchasing our smart watch. To keep this smart watch works in good condition, please read this manual carefully, and keep it for future use. The pictures in the manual show as the functional diagram, so there might be a little difference. Our company reserves the final interpretation.
- Please do not disassemble the watch by yourself.
- Please do not put the battery in high temperature or throw it into the fire to avoid causing any explosion.
- Please do not hit the screen by any sharp object.
- Please keep the corrosive chemicals, detergents far away from the watch.

- Please do not expose the watch directly to the sun, or smoky and dusty place for a long time.
- Please keep this smart watch dry. Do not use it in high humidity surroundings, such as in bathroom. This product is not waterproof, please keep it away from rain and water.

Catalogue

Catalogue.....	3
一、Product Introduction.....	4
1. Appearance introduction.....	4
2. Battery removal and installation, T-flash card installation.....	4
二、Function Operation.....	5
1. Function Introduction.....	5
2. Operation.....	5
2.1 Home Button.....	5
2.2 Display and Operation of the Main Menu.....	6
3. Settings.....	7
3.1 Settings.....	7
3.2 The Bluetooth Settings.....	7
4. Push service applications.....	7
三、Others.....	10

I、 Product Introduction

1. Appearance introduction



1. Speaker

2. Touch screen (TP)

3. LCD display area

4. Home button

5. Camera

6. USB port

7. Mic hole

2 . Battery removal and installation, T-flash card installation

Main procedure:

1. Open the cover of battery
2. Remove the battery
3. Insert TF Card
4. Assemble the battery and the cover of battery

II、 Function Operation

1. Function Introduction

Bluetooth companion: supports bluetooth dialing, sync watch contactors, call records, etc.

Phone reminder: APK Android smart watch pushing service, such as short message, time, status information etc.;

It has sports pedometer, sleep monitoring and other functions.

2. Operation

2.1 Home Button

Long press: Turn-on or Turn-off; Short press: Return Function.

When it is on, short press to enter active-standby clock (as

shown in the picture), short press again to close the screen.



Active-standby clock, press on touch screen and slide left or right to enter main menu, slide up to enter pedometer and down to enter setting.

2.2 Display and Operation of the Main Menu

1. Display time, date, week;
2. The bottom icons on the screen are:Menu,Tools;

Slide on touch screen to enter sub-menu (function menu).

3. Settings

3.1 Settings

1. Setting: you can set the time and date, time switch machine, language, input method, the standby screen, the main menu display effect, flight mode, handwritten and backlight lamp brightness, etc.;
2. Notification Settings
3. Network Settings
4. External connection
5. Security Settings
6. Restore the factory Settings

3.2 The Bluetooth Settings

1. After you open the Bluetooth, you can be searched.
2. Use your cellwatch to search the Bluetooth watch.
3. When you search the device, choose “Yes” to connect.

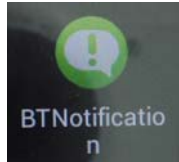
4. Push service applications

1. Download APK to smart watch software, and install the APK. Download method:

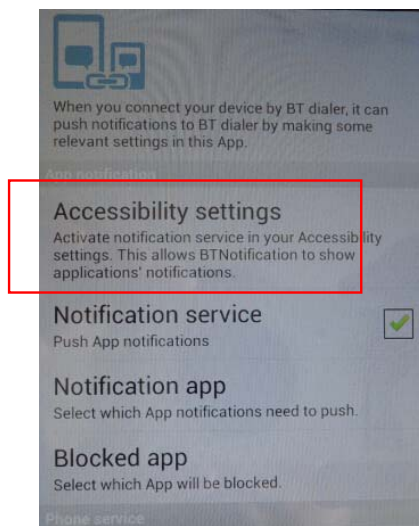
Use your smart watch to scan the QR code on the watch,

and then you will get the APK package;

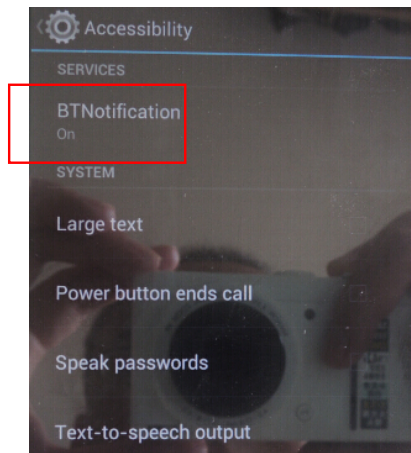
2. Click on the install package and when it is finished, the APK icon appears in the mobile watch desktop.



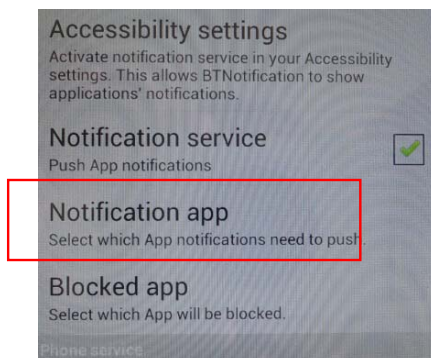
3. Make sure the Bluetooth is connected between the smart watch and watch.
4. Click on the APK icon then you will see the bluetooth notification Settings interface.



5. Activate "bluetooth notification"



6. You can choose procedure that needed to be notified.



III、 Others

1. If there is any quality problem when you use, such as material or design, you can ask for an exchange to the store you bought it within 15 days after you buy.
2. We do not offer any free warranty for the following situation.
 - 1). Open and repair the smart watch by yourself.
 - 2). Drop the watch and cause any damages.
 - 3). All artificial reason or third party's fault, misuse, is beyond the scope of the warranty.
3. You must provide the warranty card with the seal of purchase date and place when you ask for the free warranty.
4. When the buyer repair the product, please take the product to our company or the company dealerships.

FCC STATEMENT:

This device complies with Part 15 of the FCC Rules. Operation is subject to the following two conditions: (1) This device may not cause harmful interference, and (2) This device must accept any interference received, including interference that may cause undesired operation. Warning: Changes or modifications not expressly approved by the party responsible for compliance could void the user's authority to operate the equipment.

NOTE: This equipment has been tested and found to comply with the limits for a Class B digital device, pursuant to Part 15 of the FCC Rules. These limits are designed to provide reasonable protection against harmful interference in a residential installation.

This equipment generates uses and can radiate radio frequency energy and, if not installed and used in accordance with the instructions, may cause harmful interference to radio communications. However, there is no guarantee that interference will not occur in a particular installation. If this equipment does cause harmful interference to radio or television reception, which can be determined by turning the equipment off and on, the user is encouraged to try to correct the interference by one or more of the following measures:

Reorient or relocate the receiving antenna.

Increase the separation between the equipment and receiver. Connect the equipment into an outlet on a circuit different from that to which the receiver is connected. Consult the dealer or an experienced radio/TV technician for help.

RF warning statement:

The device has been evaluated to meet general RF exposure requirement. The device can be used in portable exposure condition without restriction.