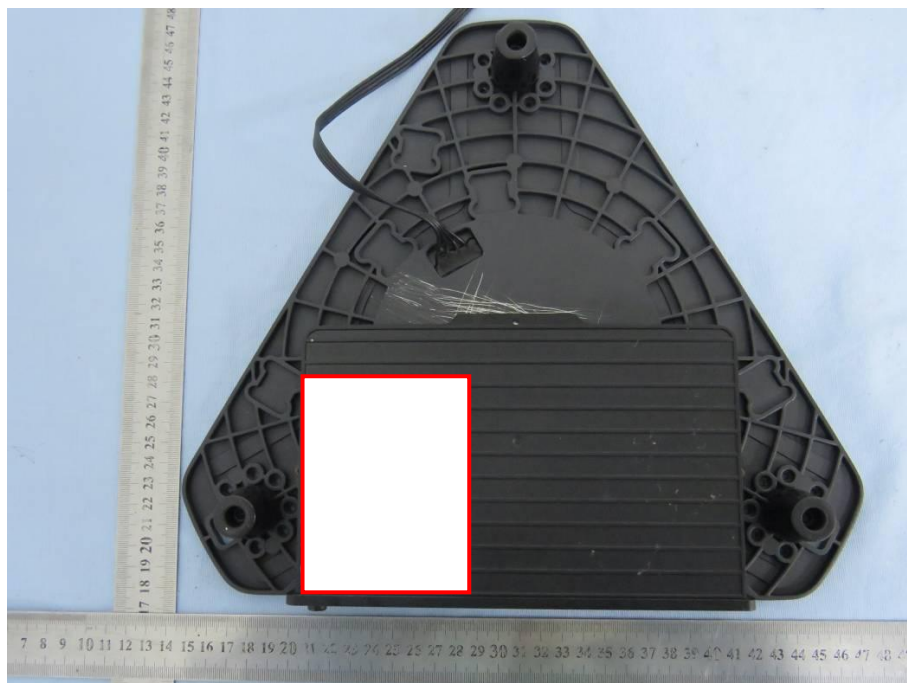


## Label



## Label Location

**DOBOT MOOZ**  
输入 / Power Input: DC 12V 10A

Model: DT-MZ-3ZSG-00C  
MADE IN CHINA

MZ3 3-1912-0001 6 9 7 0 6 3 2 0 6 2 0 0 1 1

**FCC ID: 2AHI4-MOOZ-3** **FC** **CE**

This device complies with part 15 of the FCC Rules.  
Operation is subject to the following two conditions:  
(1) This device may not cause harmful interference, and  
(2) this device must accept any interference received, including interference that may cause undesired operation.

**警告:** ① 必须使用Dobot专用电源适配器。  
② 严禁擅自拆卸, 如需维修, 请联系当地代理或官方售后进行处理。

**WARNING:**  
① Only use Dobot approved power adapter.  
② Do not disassemble, if there is a need to repair, please contact local agents or official technical support.

中国·深圳市越疆科技有限公司  
Shenzhen Yuejiang Technology Co., Ltd | China  
Web: [www.dobot.cc](http://www.dobot.cc) Info: [info@dobot.cc](mailto:info@dobot.cc)  
Tel: 4008007266 Support: [mooz@dobot.cc](mailto:mooz@dobot.cc)