



VRMAKER-40

VRmaker Box Set

Manual



Guangdong ShenYi electronic technology co., LTD
www.aipp3d.com

Safety Knowing

1、 Please obey and keep all the information that is attached with intelligent filming system. All the information can't change the purchase agreement and the claimed terms by Guangdong Schen Electronic Technology Co.,Ltd. The safety of customers is crucial. The target of R&D of Schen products should be both safe and effective. But the intelligent filming system product is treated as electrical devices, the potential possibility dangers will be caused by cable line or other functional parts. Under the misoperation, it may cause the body damage and property loss. To avoid these dangers, please strictly operate the products according to the manual and all the information is referred to within. To build up safer using conditions.

2、 Due to the misoperation or the negligence that the product is out of order. The best way is that ask the professional maintenance staff to fix it , Be sure not to open and fix it by yourself.

3、 Please frequently check the intelligent filming system stay in good condition or not, such as damage abrasion and any signs of danger. If there is some doubt of the compounds of the product ,please be sure not use the product continually .Please contact with the agent or the manufacturer immediately , to get to know how to find it out the problem, send the product for repairing which is necessary.

4、 If there will be one of the situations as follow, or there is doubt about the safety , please get the further information from the agent , suggest that stop using the product and power off the charger and disconnect with the long-distance network.

4.1 The fracture or damage of power line plug and charger.

4.2 Overheating ,smoggy ,firelight.

4.3 The blasting or strong peculiar smell

4.4The liquid splash into the intelligent filming system

4.5The falling or damage in any ways that's why the product is out of order

Remark: If you meet one of these situations, please contact with the manufacturer to get further information who can offer you another replacement. But you must stop using it before you get the new replacement.

5、 Unless under the instruction from the after-sale service and manufacturer. Otherwise be sure not to repair it on your own. Please let the authorized service supplier to repair your specific product.

6、 The using notice of plug and socket

6.1 If there is damage and corrosion of the socket , please ask the qualified mechanic to replace it first.

6.2 Please be sure not to modify or bend the plug, if there are some damages of plug, please contact with manufacturer to get the replacement.

Safety Knowing

6.3 There are some plugs with three-core, the three-core plug is just fit for grounded socket, that's a safe device, please be sure not to plug in other socket which is not grounded without protection.

6.4 Please be sure not to use the plug overloaded, the total amount of the power shouldn't exceed every branch of circuit as rated. If you have any questions about the power loading and branch rated power, please get more information with the mechanic staffers.

6.5 Be sure to check the function of the plug and socket with the correct rated voltage and current.

7、Clean-up and Maintenance

Please keep the product and work area clean, firstly shut off all the filming system. Be sure not to get the product splashed or sprayed. Be sure not to use flammable detergent to clean it up. Suggest you can spray the detergent on the cloth first, and then use the sprayed cloth to apply the surface of the product.

FCC Statement

This equipment has been tested and found to comply with the limits for a Class B digital device, pursuant to Part 15 of the FCC Rules. These limits are designed to provide reasonable protection against harmful interference in a residential installation. This equipment generates uses and can radiate radio frequency energy and, if not installed and used in accordance with the instructions, may cause harmful interference to radio communications. However, there is no guarantee that interference will not occur in a particular installation. If this equipment does cause harmful interference to radio or television reception, which can be determined by turning the equipment off and on, the user is encouraged to try to correct the interference by one or more of the following measures:

- Reorient or relocate the receiving antenna.
- Increase the separation between the equipment and receiver.
- Connect the equipment into an outlet on a circuit different from that to which the receiver is connected.
- Consult the dealer or an experienced radio/TV technician for help

Changes or modifications not expressly approved by the party responsible for compliance could void the user's authority to operate the equipment.

This device complies with part 15 of the FCC rules. Operation is subject to the following two conditions

- (1) this device may not cause harmful interference, and
- (2) this device must accept any interference received, including interference that may cause undesired operation

The device complies with RF specifications when the device used at more than 20cm from your body.

Contents

Safety	1
Contents	3
Introduction of Product	4
Structure of Product	5
Installation of Product	6
01 Installation of supplement light	6
02 Installation of diffuser bracket	7
03 Installation of diffuser	7
04 Installation of turntable	8
05 Installation of soft light shed	8
06 Installation of right light	9
07 Installation of power supply	11
08 Introduction of functions	12
09 Completion of installation	13
Methods of producing works	14
Lists of products	16

Introduction of Product

● **Word-of-Mouth Brand of Schen Quality**

Coming with Samsung LED lamp bead imported with original packaging and heat-resistant durable full aluminum alloy device, high-end green energy-saving LED chip with high brightness and fine coloration to create professional lighting; sporting SEHWA PC Diffuser, imported optical-level PMMA-PS combo. The optical brightness and diffusion effect was perfectly embodied with its single-faced dull polishing light texture that is ultra durable and impact resistant. Coordinated with its robust and durable multi-chip metallic aviation plug, the stable performance and durability of the photographic light box are guaranteed.

● **Switching at Will, Perfect Experience**

Products are newly upgraded in the light of user experience. Humanized settings include automatic and manual buttons to switch to your desired working types; when you are in the automatic mode, one click on the button without any techniques, and you can easily make a 360° exhibition for your photos or videos; when you are in manual mode, you are free from complex flow. You get to experience in person the pleasure of making all the way by just a simple handling.

● **Aviation Plug, Safer and More Durable**

The whole system comes with aviation plug that sports fine copper-plated-with-silver texture and insulation black bakelite thread that prevents impact on socket mechanics and performance loss even after times of plug-in and plug-out with its extremely high insulativity. The plus comes with metallic locking ring to fix the male and female connectors and prevent it from falling off when working.

● **A Photoshop-free Photographic Weapon**

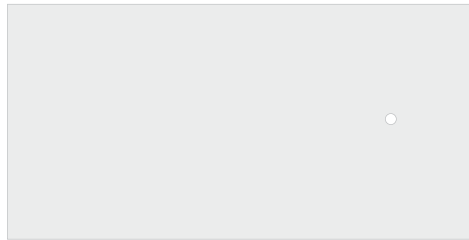
Coordinated with the APP control system, it automatically adjust lighting according to different product types to create effects of strong lighting and good texture, perfectly displaying soft light and lines without the need of later-stage processing by computer or mobile phone. The time-consuming and laboursome, photoshopping and beautifying are no more as a pure-white.

Structure of Product

Box and inner assembling parts



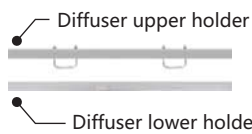
light box



diffuser



Led light



Backup tool box



Soft light shed



Turntable



Spindle



Power cable line

Parts of ring light



Ring light



Short stick of fixation



Long stick of fixation



Turning bracket*2



Power line of right light

Installation of Product

01 installation of supplement light

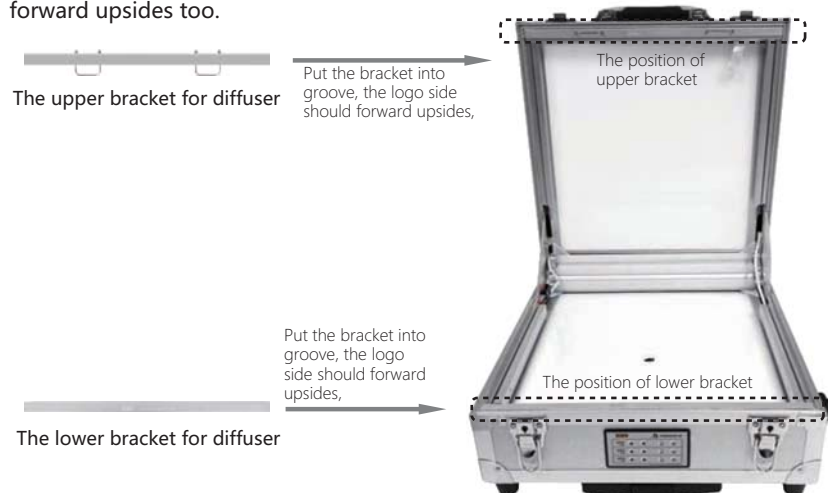
Place the supplement light in the middle of box, the magnetic in the back of supplement light will be adhere to the iron metal automatically, adjust the position well, and plug in the left battery socket.



Installation of Product

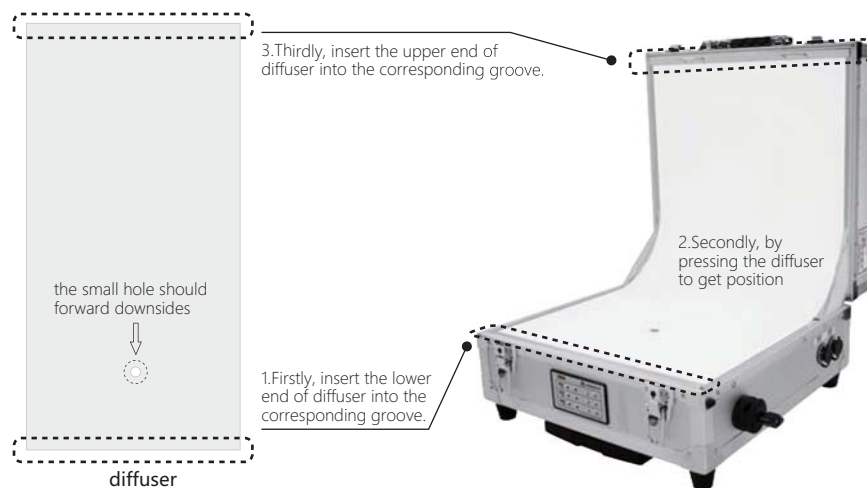
02 installation of diffuser bracket

Put the upper bracket into corresponding groove, the logo side should forward upsides. Put the lower bracket into corresponding groove, the logo side should forward upsides too.



03 installation of diffuser

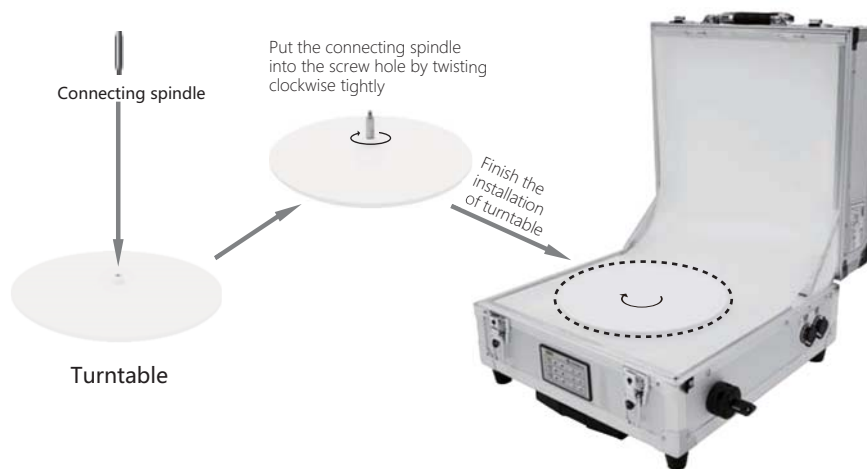
the smooth surface of the PC diffuser downwards and the rough surface upwards, put the lower end of diffuser into the corresponding groove, finish the fixation of lower end first, one hand hold the upper end , the other hand press the middle of diffuser , put the upper end of diffuser into the corresponding groove, and finish the installation.



Installation of Product

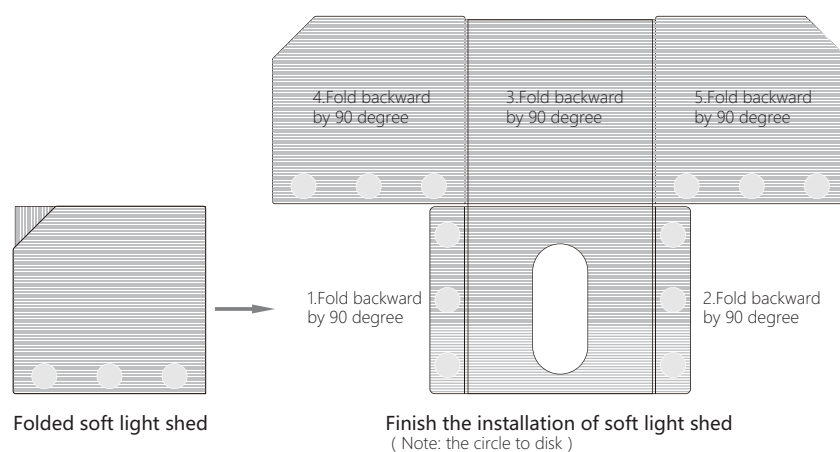
04 Installation of turntable

Firstly, Connect the spindle with the screw hole where is in the middle of the table by twisting unclockwise tightly, Secondly, connect the table with the screw hole of light box by twisting clockwise tightly, finish the installation of turntable.



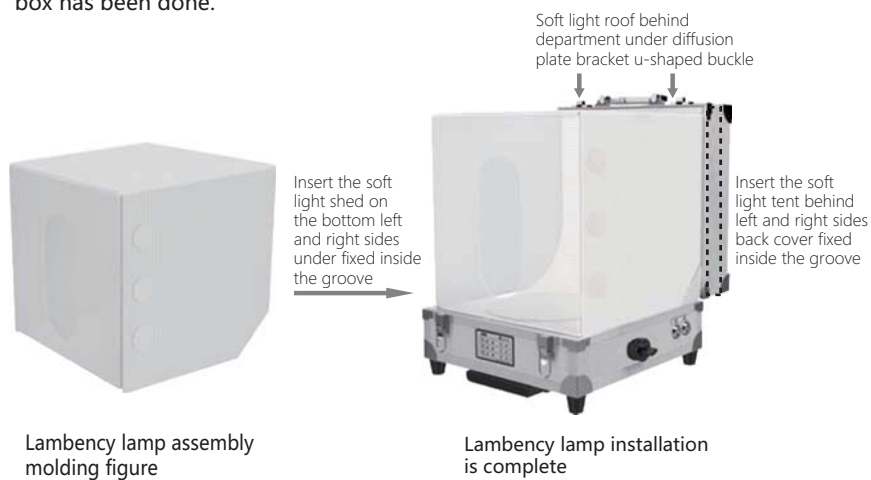
05 installation of soft light shed

1 . Unfold the soft light shed according to the procedure order 1-5 , there are metal on both sides of shed that can assist the shed to fix on the box tightly.



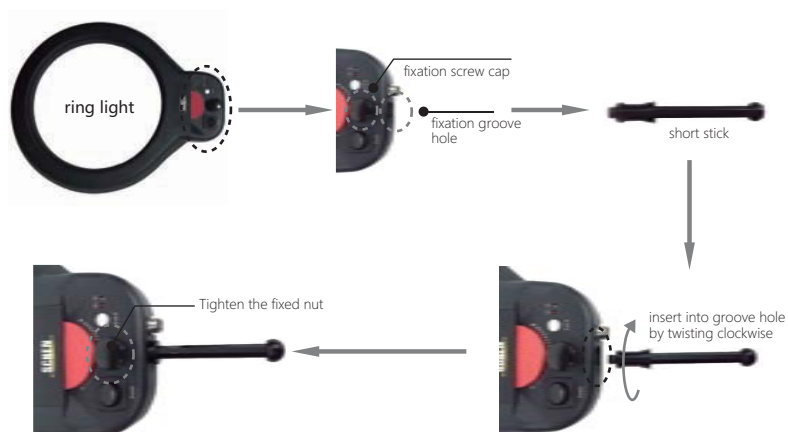
Installation of Product

2 . 2.After the installation of soft light shed, then insert the left and right both sides into the fixed groove of light box , and then insert the top end into the upper bracket of diffuser just below these two U button, after that the installation of light box has been done.



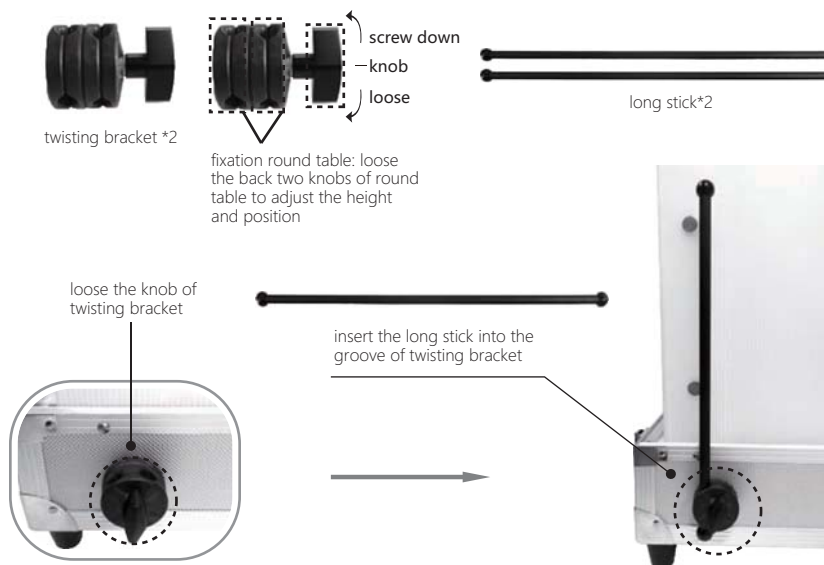
06 installation of ring light

1 . insert the short stick with screw end into the groove hole, by twisting clockwise to connect the short stick with ring light, and screw down tightly the cap on the ring light, fix the short stick at good position.

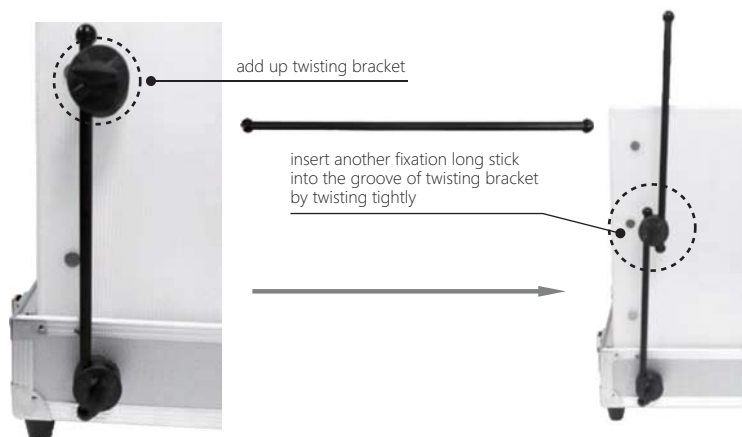


Installation of Product

2 . loose the right twisting bracket of light box, put one long stick into one of the groove , and screw down twisting bracket tightly.

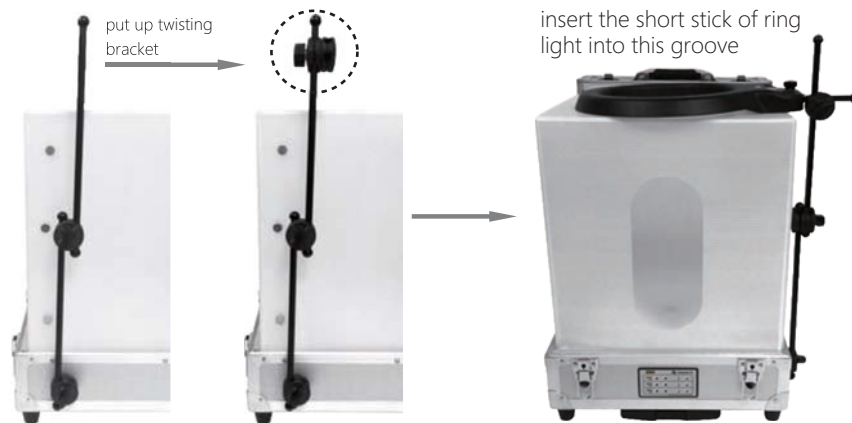


3 . add up another twisting bracket on the long stick, and insert another fixation long stick into the groove of twisting bracket in order to extent the height of long stick, by twisting knob to fix well.

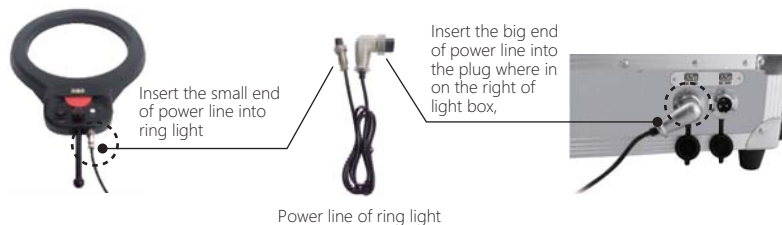


Installation of Product

4 . put up another twisting bracket on the second long fixation stick, insert the short stick of ring light into this groove , and adjust the position well, finish the installation of ring light.



5 . connect the small end of power line with ring light , screw down the cap in order to get fixation , connect the big end of 24V power line with the plug on the right of light box , position the round hole , by twisting screw cap to get fixation.



07 connection of power line

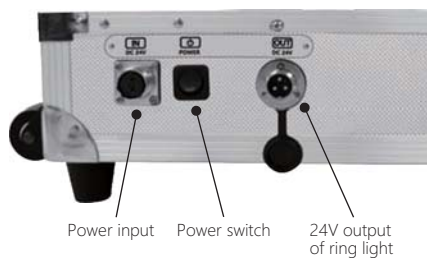
1 . plug in the power line with round cap on the left panel of light box, and screw down, connect the power line with battery box and plug with socket, can switch on after installation.



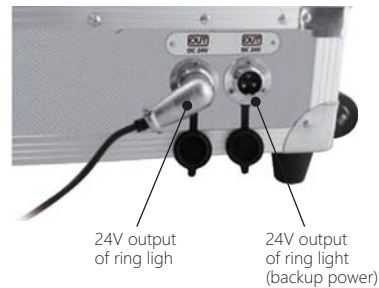
Installation of Product

08 Introduction of functions

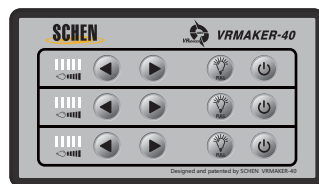
Left panel of light box



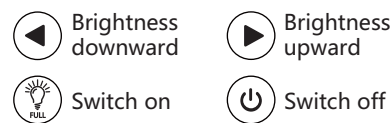
Right panel of light box



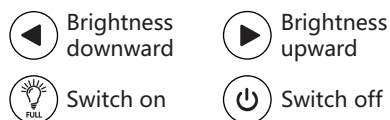
Front panel of light box



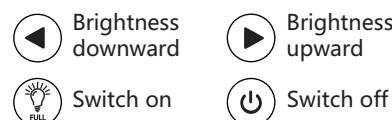
First row: Buttons of back panel light



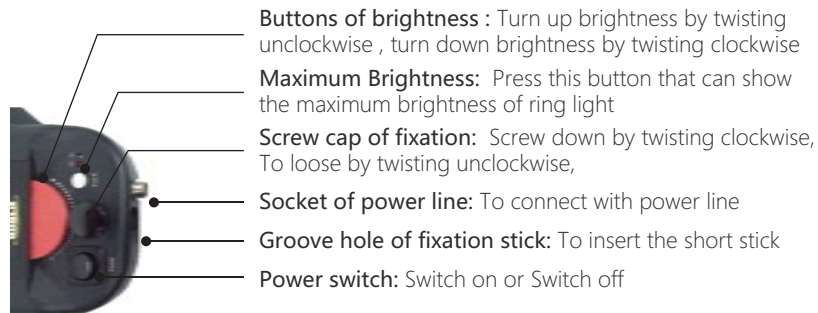
Second row: buttons of supplement light



Third row: buttons of bottom light panel



Introduction of function of ring light panel



Installation of Product

09 Completion of installation of product

Full set of light box has been installed , put the filming product in position, adjust the position of camera, switch on every parts of light box, adapting the adjustment of brightness and functions , get ready to take photos, you can go to 3D imaging sharing platform Aipp to produce panoramic works after filming.



1.Light box: There are five levels of dimming for the photographic light box, the upper and lower parties able to be adjusted independently, which is convenient for dimming according to actual requirements in different shooting environments. The light source consists of high-brightness low-energy-consumption high-CRI LED lights imported from Korea. Shadow-free photographic effect is created with the design of double-row high-light-effect LED light.

2.Soft light shed: In order to make the light soft and equality , can block other stuffs out of shed to get the best filming conditions which is better for showing products.

3.Ring light: It sports Samsung LED chip imported in original packaging and creates balanced and intact arrangement of light with the non-polar dimmer and 5400K standard color temperature.

4.Inner Bluetooth turntable : Turntable built-in Bluetooth controlled camera, in picture mode you can set filming number such as 18, 36, 72 by turning a round, you can also set the video mode.

Methods of producing works

一、Register /Login-in three-dimensional imaging sharing platform

1、Registration Procedure

Click Register Now at the homepage of the Platform , and then enter the registration page. After successful registration , you'll be landing automatically to a Registration Succeeds Page. At this page , you can click corresponding links , and choose to enter Personal information or return to the homepage and click Panorama Making.

2. Logging-in

Click Log In button on the upper right corner of AiPP homepage. Pop in to the Log-in Page and enter your user name and password. Click Log In and enter the Study Center page.

二、Click Panorama Making to Start Making

2.1 Creating Watermark

Enter to Personal Center , and click the Create a Watermark to the left. Click Select Watermark and choose the presorted watermark and upload it. You can manually adjust the transparency and size of the watermark at this page and save after finishing editing.

2.2 Making Video

Click the Panorama Making and enter the 360° Panorama Making page. Import images. Select presorted 18 (Standard Definition) / 36 (High Definition) / 72 (Ultra Clear) images and start uploading. After the page automatically lands to the clipping page , you can make basic adjustment on images and rotate or stretch at will. Click Clip and land to the next Making Page. You can manually adjust the light and shade , saturability , and watermark transparency of the images at this page. And then enter the name of your work and click Create Work. After the page lands on to the Preview Page of the products , you can describe the work at length , share the work to social media , copy product link or recreate it. Work will be automatically saved. Enter the Personal Center to check it out. At this Page you can manually adjust the light and shade , saturability and watermark transparency of an image. Enter the name of the work and click Make a Work , and then the page will land on a preview of the work where you can add detailed description of the work , share the work at 360 to social network , copy the product link or remake it. The work is auto-saved. You can check it at the Personal Center

Methods of producing works

2.3 picture producing

Click the navigation bar " Panorama production " and enter " 360 degree panoramic view of the production " page. Import Video, select Add video, automatically by default a datetime with the start time, you do not need to fill in or change in the Duration column filled in While the video is playing longer, such as 17 (seconds), in the number of sampling bar to select 18 / 36 / 72 / 144, click " Submit ", the page jumps to the next step. In this page you can manually adjust the light and shade, saturation, and a Picture watermark transparency, with the title, click on " producing works ", the page jumps to the preview of the work interface, can be a detailed description of the work, share links to social networking sites, replication works 360, works or relocated. The works will be saved automatically, go to the personal centre and check it out!

≡、Checking the Work

3.1. Enter the Personal Center at the upper right corner of the navigation bar. I Click My Work to the left , and then Preview the work. You can adjust the rotation speed and direction. At this page you can share the work to social network with just one click. You can also request for exhibiting the work at the homepage or delete it.

Lists of products

Light box*1	ring light*1	soft light shed*1	supplement light*1
Diffuser*1	turntabel*1	connecting spindle*1	diffuser bracket*2
twisting bracket*2		long fixation stick*2	short fixation stick*2
Power line of light box*1	Power line of ring light*1	Backup tool box*1	

outfit : container*1 bracket holder*1 eraser*1
25mm holding spacer*8 50mm holding spacer*8 100mm holding spacer*4



400-086-9000 The free services hotline
www.aipp3d.com