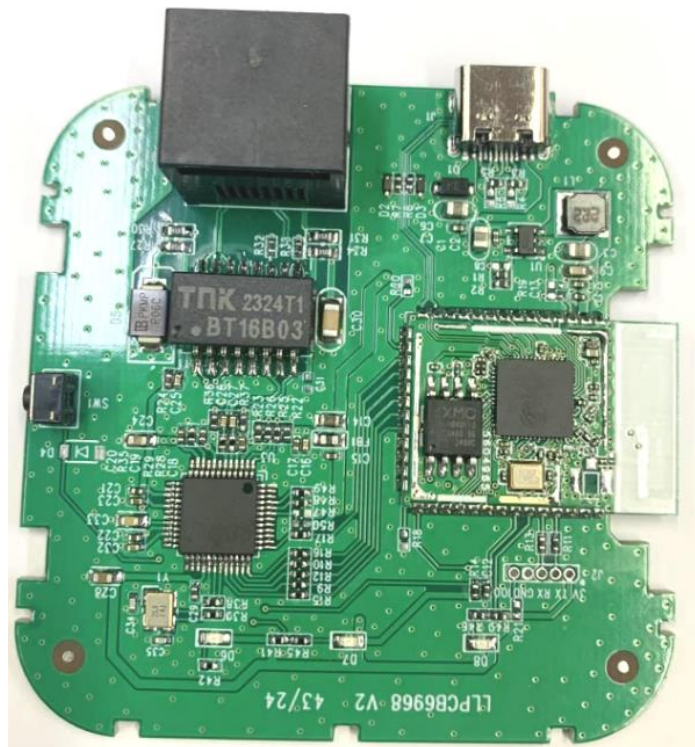


B01-HUB2 User Manual

1. Introduction

B01-HUB2 is based on the IEEE 802.3 Ethernet protocol standard and uses low-power Bluetooth 5.0 to develop a series of intelligent wireless whole house intelligent lighting control systems with adjustable brightness, color temperature, and color. The system can be remotely controlled through mobile app software (IOS and Android) or locally controlled via Bluetooth to achieve intelligent lighting on/off, brightness, color temperature, and RGB color adjustment.

2. Module samples



3. General information

1. support (Bluetooth LE): Bluetooth 5.0、Bluetooth mesh, The frequency range is 2402 MHz ~ 2480 MHz;
2. Xtensa ® dual-core 32-bit LX7 microprocessor, up to 240 MHz;
3. Supports a 10/100Mbps Ethernet port;
4. Single power supply 2.7 to 3.6V;
5. Simultaneous support for Infrastructure BSS in Station, SoftAP, or Station + SoftAP modes Note that when ESP32-S3 scans in Station mode, the SoftAP channel will change along with the Station channel;
6. Integrated on-board antenna;

CAUTION: Not for emergency lighting. Indoor use only.

Not for use in enclosed luminaires, suitable for Damp locations, Suitable for use in operating environments between -4°F and 104°F.

NOTE: This device complies with Part 15 of the FCC rules, Operation is subject to the following two conditions: 1) this device may not cause harmful interference, and 2) this device must accept any interference received, including interference that may cause undesired operation, For details, visit www.sengled.com/fcc

LIMITED WARRANTY: Sengled warrants product from defects in material or workmanship for two (2) years from the date of original purchase, as evidenced by the purchase date on the receipt. For more details, visit [sengled.com](https://www.sengled.com)

DIMMING SUPPORTED VIA SENGLLED HOME APP OR COMPATIBLE DEVICES ONLY.

Support:

If you encounter any issues, please reach out to your local Sengled Support team.

Visit the following website for web support: <https://support.sengled.com/>

Send emails to:

Support@sengledzendesk.com (USA)

Google and Google Play are trademarks of Google LLC,

Sengled USA, inc.

4646 Distribution Pkwy, #400, Buford, GA 30519

www.sengled.com

Federal Communications Commission (FCC) Interference Statement

Any Changes or modifications not expressly approved by the party responsible for compliance could void the user's authority to operate the equipment.

This device complies with part 15 of the FCC Rules. Operation is subject to the following two conditions:

(1) This device may not cause harmful interference, and

(2) This device must accept any interference received, including interference that may cause undesired operation.

FCC Radiation Exposure Statement: For Bulb

This equipment complies with FCC radiation exposure limits set forth for an uncontrolled environment . This equipment should be installed and operated with minimum distance 20cm between the radiator& your body.

RF warning for Portable device: For remote

The device has been evaluated to meet general RF exposure requirement. The device can be used in portable exposure condition without restriction.

Note : This equipment has been tested and found to comply with the limits for a Class B digital device, pursuant to part 15 of the FCC Rules. These limits are designed to provide reasonable protection against harmful interference in a residential installation. This equipment generates,uses and can radiate radio frequency energy and, if not installed and used in accordance with the instructions, may cause harmful interference to radio communications. However, there is no guarantee that interference will not occur in a particular installation. If this equipment does cause harmful interference to radio or television reception, which can be determined by turning the equipment off and on, the user is encouraged to try to correct the interference by one or more of the following measures:

- Reorient or relocate the receiving antenna.
- Increase the separation between the equipment and receiver.
- Connect the equipment into an outlet on a circuit different from that to which the receiver is connected.
- Consult the dealer or an experienced radio/TV technician for help.

ISED RSS Warning/ISED RF Exposure Statement

ISED RSS Warning:

This device complies with Innovation, Science and Economic Development Canada licence-exempt RSS standard(s). Operation is subject to the following two conditions: (1) this device may not cause interference, and (2) this device must accept any interference, including interference that may cause undesired operation of the device.

This apparatus complies with ISED's RSS applicable to licence-exempt radio apparatus. The operation is authorised under the following two conditions:

- (1) the device shall not cause interference, and

(2) The user of the device must accept any radio frequency interference that is experienced, even if the interference is likely to affect the operation of the device.

ISED RF exposure statement: For Bulb

This equipment complies with ISED radiation exposure limits set forth for an uncontrolled environment. This equipment should be installed and operated with minimum distance 20cm between the radiator & your body. This transmitter must not be co-located or operating in conjunction with any other antenna or transmitter.

The radiation of class B respects ISED fixed in an uncontrolled environment. Installation and implementation of this material should with exchanger minimum distance between 20 cm your body. Launchers or cannot coexist this antenna or sensors with others.

ISED RF exposure statement: For remote

This equipment complies with ISED radiation exposure limits set forth for an uncontrolled environment. The device has been evaluated to meet general RF exposure requirement.

The device complies with the radiation exposure dose limits stated for another environment. This device has been evaluated to meet the general requirement of RF exposure.